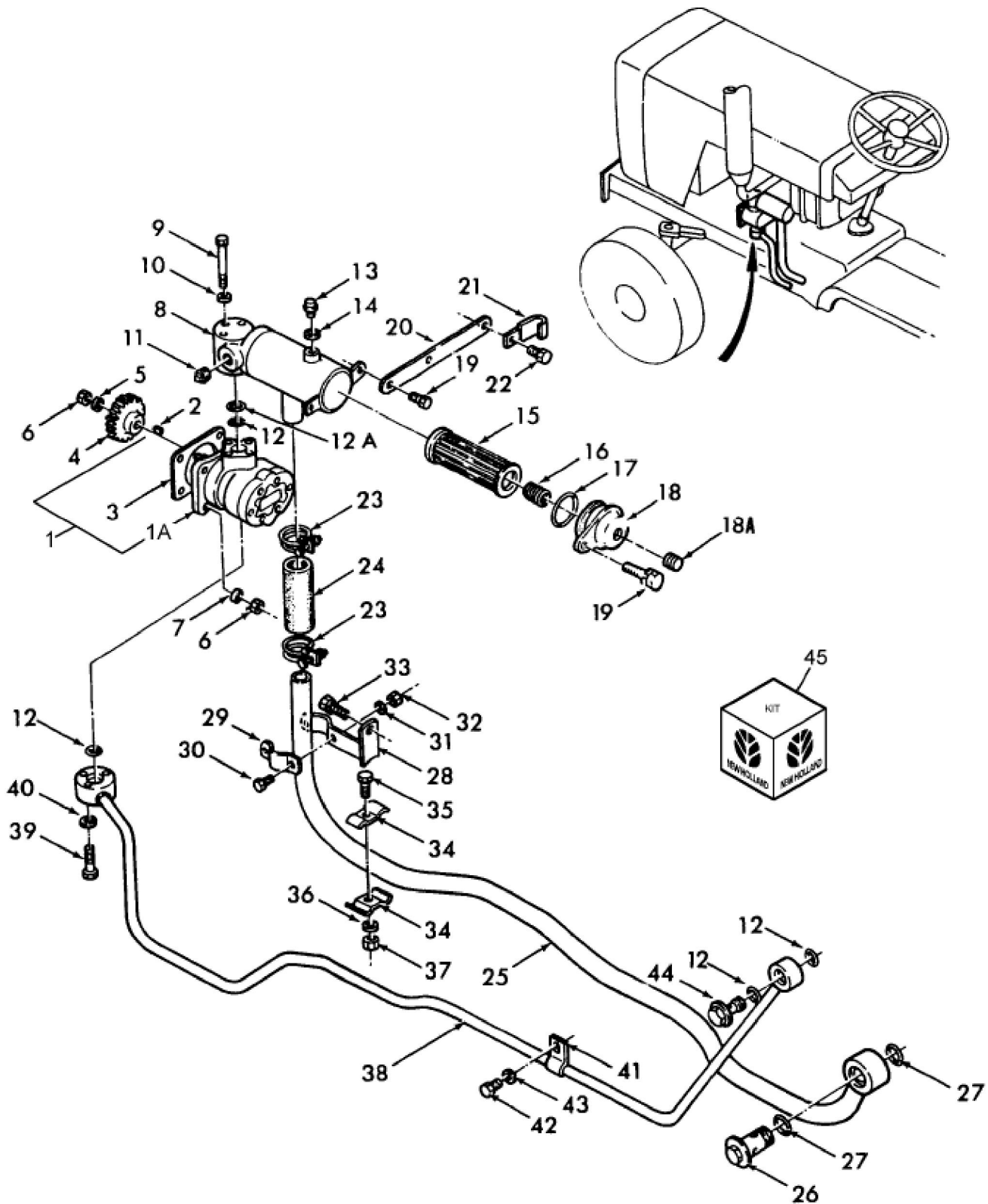


1300 2 CYL COMPACT TRACTOR (1/79-12/82)
10A02 HYDRAULIC PUMP & PIPING, 1300

1300 2 CYL COMPACT TRACTOR (1/79-12/82)**10A02 HYDRAULIC PUMP & PIPING, 1300**

Key	Qty	Part Number	Part Name	Description
1	1	SBA340450150	Small Pump	Pump Assy., Hydraulic System, 8cc Includes: Ref. 1A Thru 2, This Pump Assy. Replaces SBA-340450101 Pump Assy., Start Year: 01/01/1979
1A	1	SBA050203115	Oil Seal	Seal, Oil, 150 & 250 Pumps, Start Year: 01/01/1979
1B	1	SBA050209059	Gasket	Seal, 1010 Pump Only, Years: 01/01/1979-06/30/1980
2	1	SBA034303013	Key	Key, Start Year: 01/01/1979
3	1	SBA340990011	Gasket	Gasket, Start Year: 01/01/1979
4	1	SBA340460030	Gear	Gear, Start Year: 01/01/1979
5	1	87016617	Lock Washer	Washer, M8, Start Year: 01/01/1979
6	5	89706690	Nut	Nut, M8, Cl 8, Start Year: 01/01/1979
7	4	86511315	Washer	Washer, M8 X 16 X 1.6, Start Year: 01/01/1979
8	1	SBA340750010	Casing	Filter, Start Year: 01/01/1979
9	3	SBA010110665	Bolt	Bolt, M6 X 65, Start Year: 01/01/1979
10	3	PL	Procure Locally	Washer, M6, Start Year: 01/01/1979
11	1	SBA064500030	Plug	Plug, 3/8", Start Year: 01/01/1979
12	4	SBA052100210	O-ring	O-ring, P21, Years: 01/01/1979-10/31/1981
12	1	SBA052100210	O-ring	O-ring, P21, Start Year: 11/01/1981
12A	3	SBA052100200	O-ring	O-ring, P20, Start Year: 11/01/1981
13	1	SBA064600010	Plug	Plug, M10, Start Year: 01/01/1979
14	1	SBA025100010	Sealing Washer	Sealing Washer, M10, Start Year: 01/01/1979
15	1	SBA340500130	Filter	Filter Assy., Start Year: 01/01/1979
16	1	SBA398210030	Spring	Spring, Start Year: 01/01/1979
17	1	SBA052300500	O-ring	O-ring, Start Year: 01/01/1979
18	1	SBA340560080	Universal Joint	Coupling, Replaced By Multiples, Start Year: 01/01/1979
18	1	SBA340560300	Cover	Cover, Start Year: 01/01/1979
18A	1	SBA064500010	Plug	Plug, Start Year: 01/01/1979
19	2	SBA011510820	Captive Washer Screw	Screw, Captive Washer, Hex, M8 X 1.25 X 20, G5, Start Year: 01/01/1979
20	1	SBA385520070	Plate	Plate, Start Year: 01/01/1979
21	1	SBA399110340	Clamp	Clamp, Start Year: 01/01/1979
22	2	SBA011511016	Bolt	Bolt, M10 X 16, Start Year: 01/01/1979
23	2	376092S	Clamp	Clamp, Start Year: 01/01/1979
24	1	SBA398110940	Rubber Bushing	Rubber, Start Year: 01/01/1979
25	1	SBA340600700	Pipe	Pipe Assy., Oil, Years: 01/01/1979-10/31/1981
25	1	SBA340600701	Hyd Connector	Pipe Assy., Oil, Start Year: 11/01/1981
26	1	SBA398480370	Bolt	Bolt, Start Year: 01/01/1979
27	2	SBA052400300	O-ring	O-ring, Start Year: 01/01/1979
28	1	SBA399100110	Collar	Clamp Assy., Start Year: 01/01/1979
29	1	SBA399110430	Clamp	Clamp, Start Year: 01/01/1979
30	2	120104	Screw	Bolt, Hh, Cl 8.8, M8 X 1.25 X 20, Start Year: 01/01/1979
31	2	87016617	Lock Washer	Washer, M8, Start Year: 01/01/1979
32	2	89706690	Nut	Nut, M8, Cl 8, Start Year: 01/01/1979
33	1	SBA011511030	Captive Washer Screw	Screw, Captive Washer, Hex, M10 X 1.5 X 30, G5, Start Year: 01/01/1979
34	2	SBA399110440	Clamp	Clamp, Start Year: 01/01/1979

35	1	43127	Bolt	Bolt, Hex, M8 X 25, 8.8, Start Year: 01/01/1979
36	1	87016617	Lock Washer	Washer, M8, Start Year: 01/01/1979
37	1	89706690	Nut	Nut, M8, Cl 8, Start Year: 01/01/1979
38	1	SBA340600710	Rigid Tube	Pipe Assy., Years: 01/01/1979-10/31/1981
38	1	SBA340600711	Hyd Connector	Pipe Assy., Start Year: 11/01/1981
39	3	120102	Screw	Screw, Cap, Hh, Cl 8.8, M6 X 1 X 40, Years: 01/01/1979-10/31/1981
39	3	86977789	Bolt	Bolt, Hex, M6 X 35, 8.8, Start Year: 01/01/1979
40	3	PL	Procure Locally	Washer, M6, Start Year: 01/01/1979
41	1	SBA399110450	Clamp	Clamp, Start Year: 01/01/1979
42	1	SBA011510820	Captive Washer Screw	Screw, Captive Washer, Hex, M8 X 20, G5, Start Year: 01/01/1979
43	1	86511315	Washer	Washer, M8 X 16 X 1.6, Start Year: 01/01/1979
44	1	SBA398480240	Banjo Bolt	Bolt, Banjo, 3/8", Start Year: 01/01/1979
45	AR	SBA340490159	Kit	Kit, O-ring Kit, O-ring Consists Of: (6) SBA010700616 Bolts, (6) SBA010700620 Bolts, (1) SBA052100090 O-rings, (4) SBA052110200 O-rings, (2) SBA052310500 O-ring