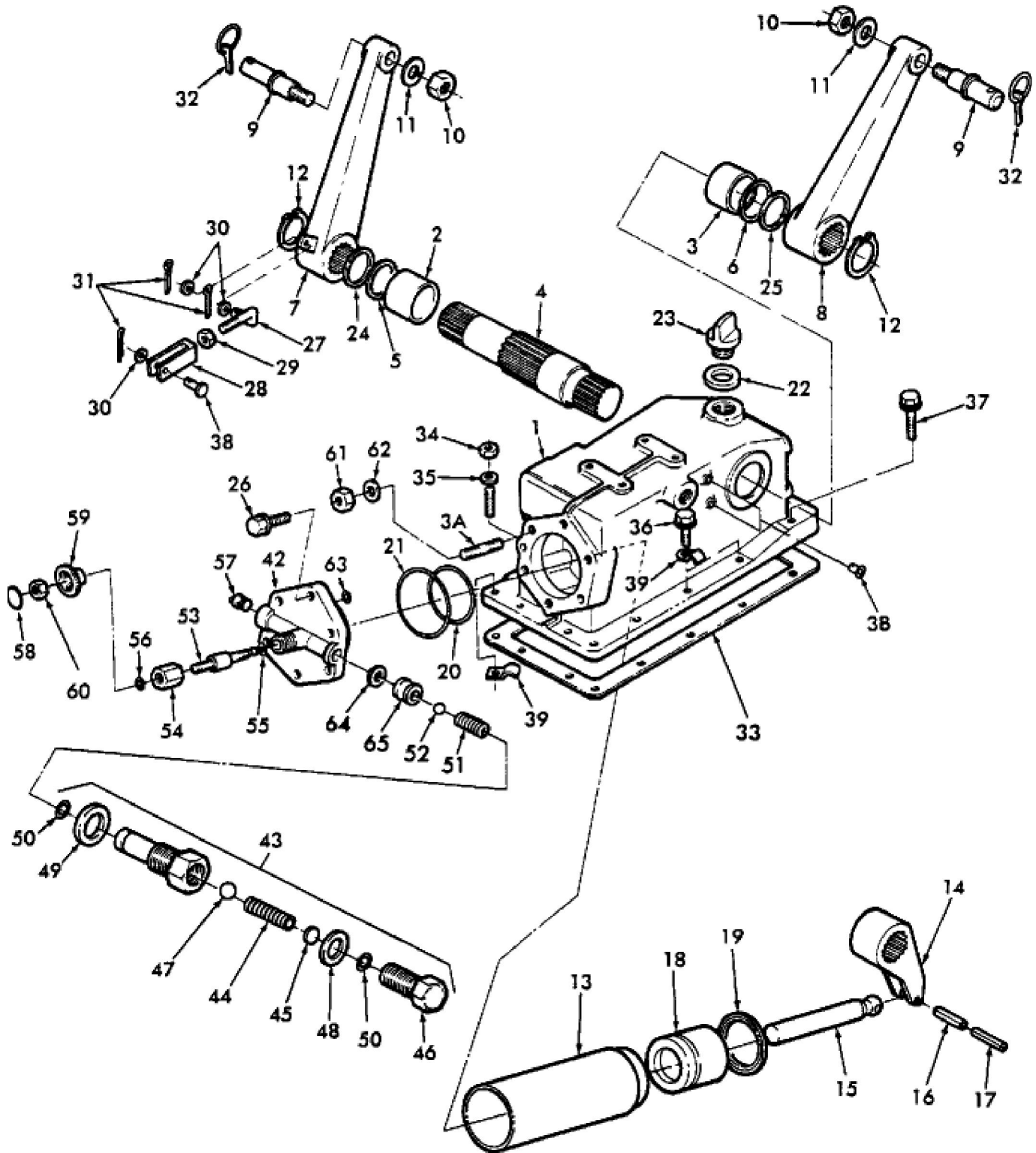


1300 2 CYL COMPACT TRACTOR (1/79-12/82)
05A02 LIFT COVER & ARMS, 1300 & 1500



**1300 2 CYL COMPACT TRACTOR (1/79-12/82)
05A02 LIFT COVER & ARMS, 1300 & 1500**

Key	Qty	Part Number	Part Name	Description
1	1	SBA344080130	Sump	Casing Assy. Includes: Ref. 2 Thru 3B, Start Year: 01/01/1979
2	1	SBA398510290	Bushing	Bushing, 45 X 50 X 30, Start Year: 01/01/1979
3	1	SBA398510090	Bushing	Bushing, 40 X 44 X 40, Start Year: 01/01/1979
3A	1	SBA012111235	Stud	Stud, Bolt, Start Year: 01/01/1979
3B	2	SBA398460020	Plug	Plug, Start Year: 01/01/1979
4	1	SBA344830160	Shaft	Shaft, Start Year: 01/01/1979
5	1	SBA052109008	O-ring	O-ring, Start Year: 01/01/1979
6	1	SBA052300450	O-ring	O-ring, Start Year: 01/01/1979
7	1	SBA344100191	Arm	Arm, R.h., Start Year: 01/01/1979
8	1	SBA344110211	Arm	Arm, L.h., Start Year: 01/01/1979
9	2	SBA344140061	Pin	Pin, Start Year: 01/01/1979
10	2	100085	Nut	Nut, Cl 8, M20 X 1.5, Start Year: 01/01/1979
11	2	9847025	Lock Washer	Lock Washer, M20, Start Year: 01/01/1979
12	2	370006	Snap Ring	Ring, Snap, Ext, M40, Start Year: 01/01/1979
13	1	SBA344790120	Liner	Liner, Start Year: 01/01/1979
14	1	SBA344810120	Arm	Arm, Start Year: 01/01/1979
15	1	SBA344770090	Rod	Rod, Start Year: 01/01/1979
16	1	86977791	Lock Pin	Pin, Roll, M8 X 45, Start Year: 01/01/1979
17	1	SBA030300545	Coiled Pin	Pin, Coiled, Start Year: 01/01/1979
18	1	SBA344760080	Piston	Piston, Start Year: 01/01/1979
19	1	SBA050309012	Seal	Seal, Oil, Start Year: 01/01/1979
20	1	SBA052310700	O-ring	O-ring, Start Year: 01/01/1979
21	1	SBA052300900	O-ring	O-ring, Start Year: 01/01/1979
22	1	SBA054109013	Gasket	Gasket, Start Year: 01/01/1979
23	1	SBA398430110	Screw	Plug, Similar To Breather #40, Fig. 05A03, Start Year: 01/01/1979
24	1	SBA398210920	Spring	Spring, Start Year: 01/01/1979
25	1	SBA398210670	Spring	Spring, Start Year: 01/01/1979
26	5	SBA011511240	Bolt	Bolt, M12 X 40, Start Year: 01/01/1979
27	1	SBA344210092	Rod	Rod, Start Year: 01/01/1979
28	1	SBA358550030	Clevis	Joint, Start Year: 01/01/1979
29	1	SBA020300008	Nut	Nut, M8, Start Year: 01/01/1979
30	3	86511315	Washer	Washer, M8 X 16 X 1.6, Start Year: 01/01/1979
31	3	2N609	Linch Pin	Pin, Start Year: 01/01/1979
32	2	2N609	Linch Pin	Pin, Start Year: 01/01/1979
33	1	SBA344990131	Gasket	Gasket, Start Year: 01/01/1979
34	2	SBA021010010	Nut	Nut, M10 X 1.25, Start Year: 01/01/1979
35	2	140028	Lock Washer	Washer, Lock, M10, Start Year: 01/01/1979
36	8	SBA011511030	Captive Washer Screw	Screw, Captive Washer, Hex, M10 X 1.5 X 30, G5, Start Year: 01/01/1979
37	4	SBA011511040	Bolt	Bolt, M10 X 40, Start Year: 01/01/1979
38	1	SBA031310820	Pin	Pin, Start Year: 01/01/1979
39	3	SBA399111970	Clamp	Clamp, Start Year: 01/01/1979
42	1	SBA344070020	Cylinder Head	Head Includes: Ref. 43 Thru 60, Years: 01/01/1979-12/31/1980

42	1	SBA344710122	Cylinder Head	Head, Start Year: 01/01/1981
43	1	SBA340015700	Hydraulic Valve	Valve Assy. Includes: Ref. 44 Thru 50, Replaced By SBA340016560, No Longer Serviced Components Still Available, Start Year: 01/01/1979
45	1	SBA340016560	Hydraulic Valve	Valve Assy., Includes: Ref.49 & 50, Start Year: 01/01/1979
44	1	SBA398210980	Spring	Spring, Used With Ref. 45 SBA340015700, Start Year: 01/01/1979
45	AR	SBA399280810	Shim	Shim, 1.0mm Thk, Kit, Used With Ref. 45 SBA340015700, Start Year: 01/01/1979
46	1	SBA399431040	Bolt	Bolt, M10 X 40, Used With Ref. 45 SBA340015700, Start Year: 01/01/1979
47	1	SBA048100008	Ball	Ball, Used With Ref. 45 SBA340015700, Start Year: 01/01/1979
48	1	SBA025100012	Washer	Washer, M12, Seal, Used With Ref. 45 SBA340015700, Start Year: 01/01/1979
49	1	SBA398112140	Seal	Seal, Start Year: 01/01/1979
50	1/2	SBA052109076	O-ring	O-ring, (1) Used W/SBA340015700 & (2) Used W/SBA340016560, Start Year: 01/01/1979
51	1	SBA398210990	Spring	Spring, Years: 01/01/1979-12/31/1980
51	1	SBA398211860	Spring	Spring, Start Year: 01/01/1981
52	1	SBA048100015	Spindle	Ball, Years: 01/01/1979-12/31/1980
52	1	86624944	Ball	Ball, 11/32" Dia, Start Year: 01/01/1981
53	1	SBA340170180	Hydraulic Valve	Valve, Start Year: 01/01/1979
54	1	SBA340190040	Guide	Guide, Start Year: 01/01/1979
55	1	SBA052100070	O-ring	O-ring, Start Year: 01/01/1979
56	2	SBA052100120	O-ring	O-ring, Start Year: 01/01/1979
57	1	SBA064500030	Plug	Plug, 3/8", Start Year: 01/01/1979
58	1	SBA390370290	Decal	Decal, Start Year: 01/01/1979
59	1	SBA398180332	Handle Grip	Grip, Start Year: 01/01/1979
60	1	100016	Nut	Nut, M10, Cl 8, Start Year: 01/01/1979
61	1	330327	Nut	Nut, Cl 8, M12 X 1.5, Start Year: 01/01/1979
62	1	412123	Lock Washer	Washer, Lock, M12 X 21 X 2.6 Thk, Start Year: 01/01/1979
63	1	SBA052100120	O-ring	O-ring, Start Year: 01/01/1979
64	1	SBA340990150	Gasket	Seal, Start Year: 01/01/1981
65	1	SBA340190130	Guide	Guide, Start Year: 01/01/1981