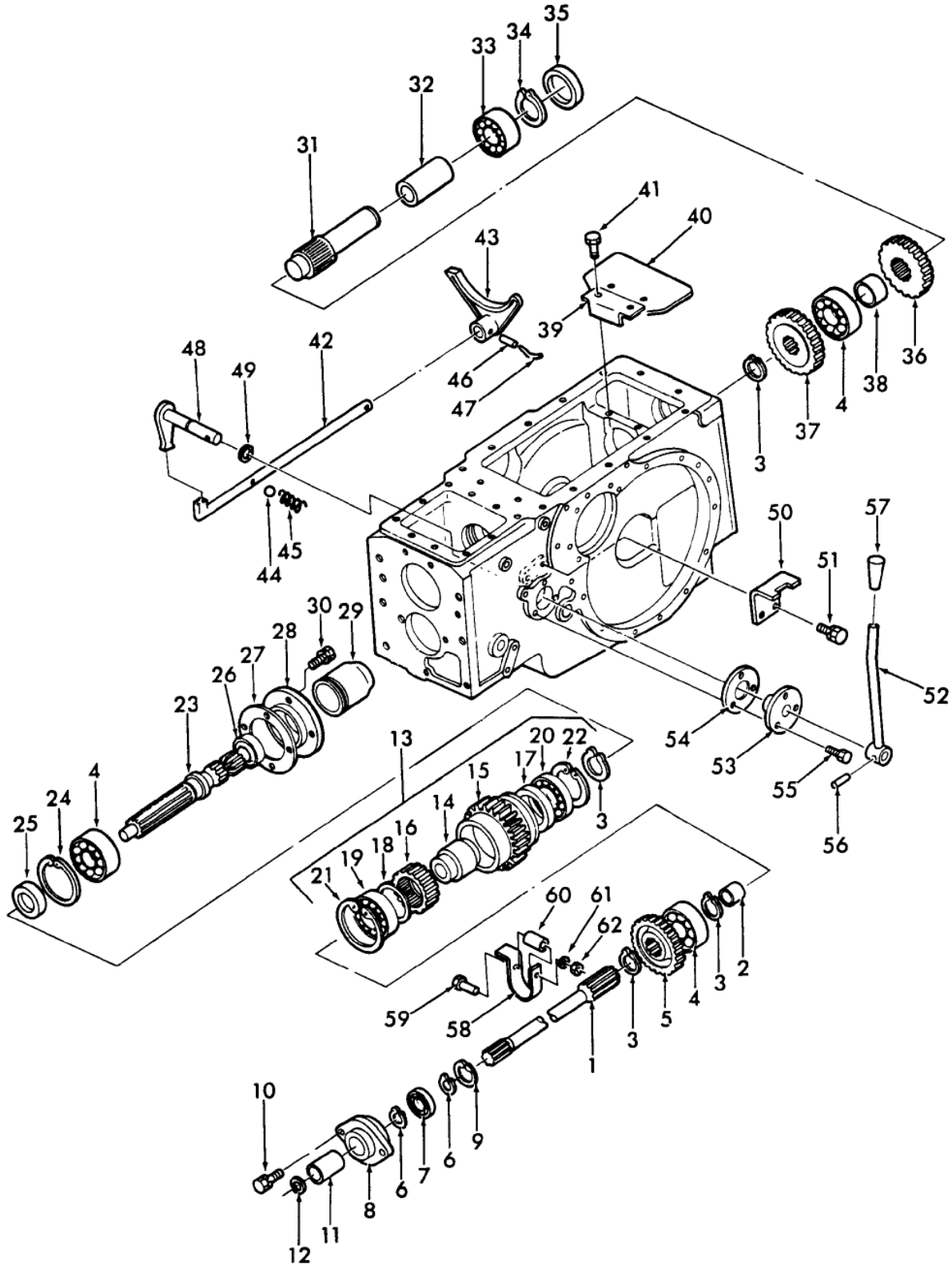


**1900 3 CYL COMPACT TRACTOR (1/79-7/83)**  
**07G03 PTO SHIFT ASSEMBLY, 1700 & 1900**



**1900 3 CYL COMPACT TRACTOR (1/79-7/83)  
07G03 PTO SHIFT ASSEMBLY, 1700 & 1900**

Key	Qty	Part Number	Part Name	Description
1	1	SBA322500240	Shaft	Shaft Assy. Includes: Ref. 2, Start Year: 01/01/1979
2	1	SBA042301825	Bearing Assy	Bearing, Start Year: 01/01/1979
3	4	11068376	Snap Ring	Ring, Snap, Ext, M35, Start Year: 01/01/1979
4	3	80037203	Bearing Assy	Bearing, Ball, Start Year: 01/01/1979
5	1	SBA322320670	Gear	Gear, Start Year: 01/01/1979
6	2	370002	Circlip	Ring, Snap, Ext, M25, Start Year: 01/01/1979
7	2	279593	Ball Bearing	Bearing, Start Year: 01/01/1979
8	1	SBA322260120	Bearing Housing	Holder, Start Year: 01/01/1979
9	1	300647	Snap Ring	Ring, Snap, M47, Int, Start Year: 01/01/1979
10	2	SBA011511025	Captive Washer Screw	Screw, Captive Washer, Hex, M10 X 25, G5, Start Year: 01/01/1979
11	1	SBA322610070	Coupling	Coupling, Start Year: 01/01/1979
12	1	84078050	Snap Ring	Ring, Snap, Start Year: 01/01/1979
13	1	SBA320080010	Clutch	Clutch Assy., Single Includes: Ref. 14, 15 (SBA322370230) 16 Thru 22, Start Year: 01/01/1979
14	1	SBA322610220	Universal Joint	Coupling, Start Year: 01/01/1979
15	1	SBA322370230	Gear	Gear, Counter, "a", Single Clutch, Start Year: 01/01/1979
15	1	SBA322340850	Gear	Gear, "a", Double Clutch, 28T, 19 Splines, W/live Pto, 1900 When Using This Gear, Ref. 3 & 14, 16 Thru 22 Are Not Used., Start Year: 07/01/1981
16	1	SBA398560460	Needle Bearing	Bearing, Start Year: 01/01/1979
17	1	SBA399210680	Spacer	Spacer, Start Year: 01/01/1979
18	1	SBA399210670	Spacer	Spacer, Start Year: 01/01/1979
19	1	86516079	Ball Bearing	Bearing, Ball, Start Year: 01/01/1979
20	1	SBA040106910	Bearing Assy	Bearing, Start Year: 01/01/1979
21	1	80300633	Snap Ring	Ring, Snap, Int, M80, Start Year: 01/01/1979
22	1	370018	Snap Ring	Ring, Snap, M72, Int, Start Year: 01/01/1979
23	1	SBA322590150	Shaft	Shaft, Output, Start Year: 01/01/1979
24	1	370018	Snap Ring	Ring, Snap, M72, Int, Start Year: 01/01/1979
25	1	SBA399260660	Thrust Washer	Washer, Start Year: 01/01/1979
26	1	SBA050202340	Seal	Seal, Oil, Start Year: 01/01/1979
27	1	SBA322990381	Gasket	Gasket, Start Year: 01/01/1979
28	1	SBA322140251	Seal	Seal, Cover, Start Year: 01/01/1979
29	1	C5NN726A	Cover	Cap, Pto, Grey, Start Year: 01/01/1979
30	4	SBA011510820	Captive Washer Screw	Screw, Captive Washer, Hex, M8 X 1.25 X 20, G5, Start Year: 01/01/1979
31	1	SBA322570250	Countershaft	Shaft, Start Year: 01/01/1979
32	1	SBA399231180	Collar	Collar, Start Year: 01/01/1979
33	1	46805	Ball Bearing	Bearing, Start Year: 01/01/1979
34	1	370003	Snap Ring	Ring, Snap, Ext, M30, Start Year: 01/01/1979
35	1	SBA322140270	Cover	Plug, Start Year: 01/01/1979
36	1	SBA322321490	Gear	Gear, Fixing, Pto, 16T, Start Year: 01/01/1979
37	1	SBA322320660	Gear	Gear, Fixing, Pto, 29T, Start Year: 01/01/1979
38	1	SBA399230570	Collar	Collar, Start Year: 01/01/1979
39	1	SBA322280060	Support	Support, Start Year: 01/01/1979
40	1	SBA322220030	Plate	Plate, Start Year: 01/01/1979

41	2	SBA011510820	Captive Washer Screw	Screw, Captive Washer, Hex, M8 X 20, G5, Start Year: 01/01/1979
42	1	SBA324300310	Rod	Rod, Start Year: 01/01/1979
43	1	SBA324410302	Lever	Fork, Start Year: 01/01/1979
44	1	86624944	Ball	Ball, 11/32" Dia, Start Year: 01/01/1979
45	1	SBA398210280	Spring	Spring, Start Year: 01/01/1979
46	1	SBA030300625	Pin	Pin, 6 X 25, Start Year: 01/01/1979
47	1	SBA398230020	Retaining Wire	Wire, Start Year: 01/01/1979
48	1	SBA324200190	Arm	Arm, Start Year: 01/01/1979
49	1	SBA052100140	O-ring	O-ring, Start Year: 01/01/1979
50	1	SBA324180111	Guide	Guide, Start Year: 01/01/1979
51	2	SBA011510820	Captive Washer Screw	Screw, Captive Washer, Hex, M8 X 20, G5, Start Year: 01/01/1979
52	1	SBA324100280	Lever	Lever, Turns Pto, Start Year: 01/01/1979
53	1	SBA324610160	Cover	Cover, Start Year: 01/01/1979
54	1	SBA324990081	Gasket	Gasket, Start Year: 01/01/1979
55	3	SBA011510820	Captive Washer Screw	Screw, Captive Washer, Hex, M8 X 1.25 X 20, G5, Start Year: 01/01/1979
56	1	SBA030300632	Slotted Pin	Pin, Slotted, M6 X 32, Start Year: 01/01/1979
57	2	SBA498180100	Handle Grip	Grip, Start Year: 01/01/1979
58	1	SBA399561220	Plate	Plate, Start Year: 01/01/1979
59	1	86977789	Bolt	Bolt, Hex, M6 X 35, 8.8, Start Year: 01/01/1979
60	1	SBA399231170	Collar	Collar, Start Year: 01/01/1979
61	AR	PL	Procure Locally	Washer, Start Year: 01/01/1979
62	1	SBA022400006	Nut	U-nut, M6, Start Year: 01/01/1979