

1989
OPERATOR'S MANUAL
60" & 73"
SNOWBLOWER

CAUTION!



1. ALWAYS REVIEW OPERATORS MANUAL BEFORE STARTING NEW MACHINE.
2. DO NOT LET INEXPERIENCED OPERATORS OR CHILDREN RUN THIS EQUIPMENT.
3. NEVER SERVICE OR CLEAN UNIT WHILE IT IS RUNNING.
4. DO NOT REMOVE SHIELDS.
5. STAY CLEAR OF AUGERS.
6. STAY CLEAR OF DISCHARGE CHUTE. ROCKS CAN BE PICKED UP AND DISCHARGED WITH SNOW.
7. POOR JUDGEMENT RESULTS IN ACCIDENTS. ALWAYS BE CAREFUL.
8. REMEMBER A CAREFUL OPERATOR IS THE BEST INSURANCE.


THIS SYMBOL MEANS CAUTION! STAY ALERT! WATCH FOR IT!



CROSS AUGER SNOWBLOWER

THIS MANUAL COVERS 60" AND 73" MODEL SNOWBLOWERS. WHEN ORDERING PARTS BE SURE TO LIST SERIAL NUMBER OF YOUR UNIT AND BLOWER WIDTH. THE SNOWBLOWER IS THE PUSH TYPE AND WILL MOUNT TO A TRACTOR WITH A CATEGORY 1 THREE POINT HITCH AND 540 RPM PTO. THE 60" AND 73" SNOWBLOWERS HAVE AN OPTION OF A HYDRAULIC SNOW CHUTE. THE AUGER AND THE BLOWER ARE EQUIPPED WITH SHEAR BOLTS TO PROTECT THE MACHINE FROM DAMAGE IN CASE A LARGE OBJECT IS PICKED UP. ANY GRAVEL PICKED UP IN THE SNOW WILL BE THROWN WITH IT AND COULD CAUSE SERIOUS INJURY. BE CAREFUL WHEN OPERATING THE SNOWBLOWER, DO NOT LET CHILDREN PLAY BEHIND THE TRACTOR OR IN THE AREA OF THE DISCHARGED SNOW.

BASIC ASSEMBLY INSTRUCTIONS

- Step 1. Assemble the snow chute, referring to instructions under the appropriate heading for "Manual Chute" or "Optional Hydraulic Chute". When this has been done, return to this page and continue with step 2.
- Step 2. Check the gearbox and fill to the lower level plug with a winter grade transmission oil.
- Step 3. The snowblower is shipped with lower three point hitch pins for a category 1 hitch.
- Step 4. Connect the PTO shaft to the gearbox and mount the snowblower to the tractor.
-  CAUTION: Before connecting the PTO shaft to the tractor check the length to see that it does not bottom at the shortest point or disconnect at the longest. Raise the snowblower until the PTO shaft is level with the tractor PTO and check the length of the PTO shaft by holding it alongside the tractor driveshaft. Next raise the snowblower fully, hold the PTO shaft beside the tractor driveshaft and see that the PTO shaft does not come apart.

IMPORTANT

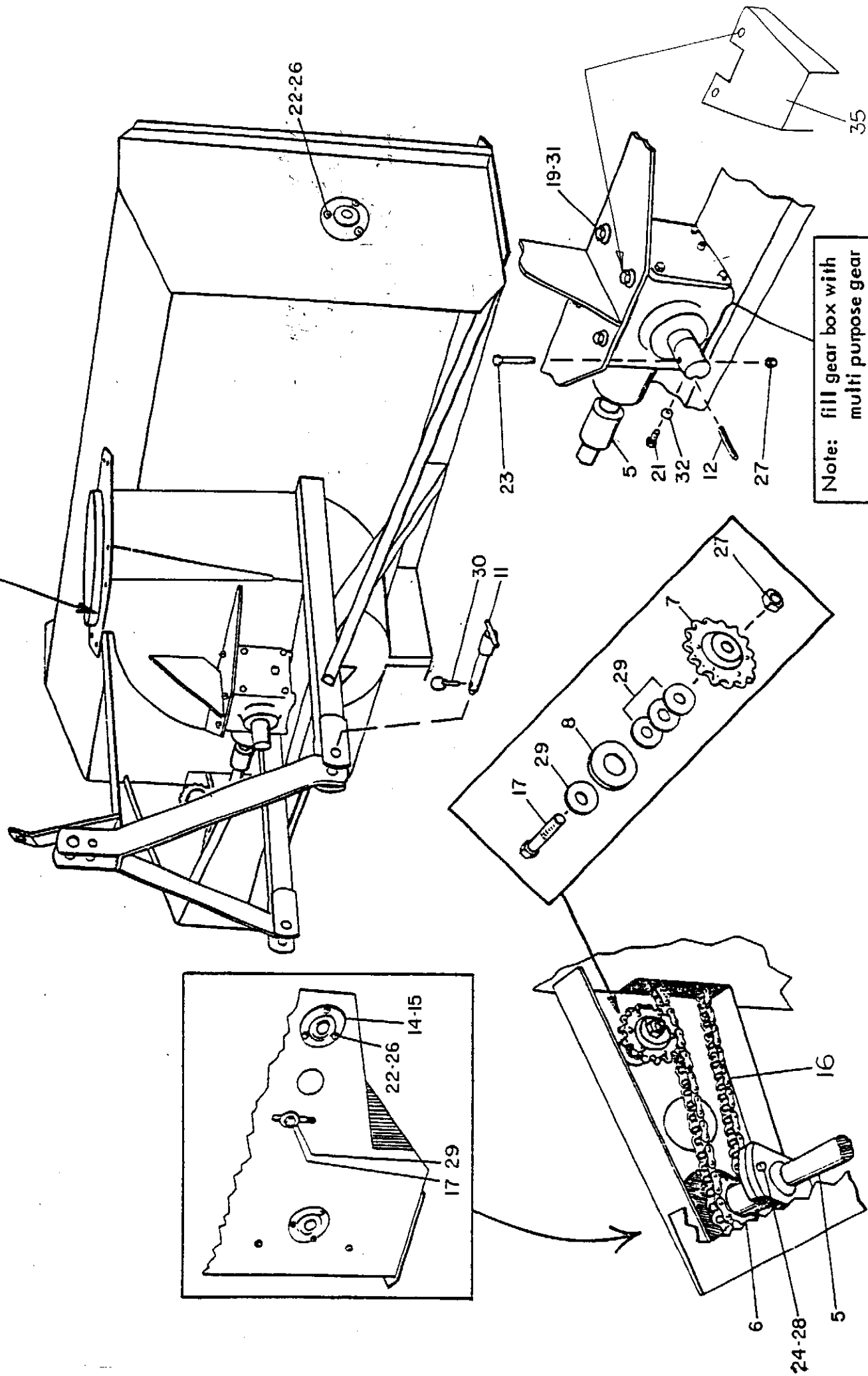
The key on the gearbox shaft (PTO End) is held in place with a 3/8" x 1" sq. hd. set screw which is locked with a nut. Assemble the nut onto the set screw, then assemble and tighten the set screw. Lock it in place by tightening the nut.

OPERATING INSTRUCTIONS

1. Adjust the top link of the tractor hitch so that the snowblower is level when resting on the ground.
2. Adjust the lower link sway chains or blocks on the tractor to restrict side movement of the blower when operating.
3. Run the blower at low RPM to check operation.
4. The snowblower has two shear bolts to protect the tractor and blower in case a large object enters the blower. For replacement use a 1/4 inch grade 5 bolt on the auger drive sprocket and a 3/8 inch grade 5 bolt on the PTO driveshaft. These bolts must be checked every five operating hours and kept tight to prevent wear of the bolts and bolt holes.
5. Daily check the auger bearing bolts on each side of the snowblower, the drive sprocket bearings and the bolt holding the blower fan on the gearbox shaft.
6. Grease the PTO and bearings every 40 hours of operation.
7. A little engine oil applied to the chain daily can double the life of the drive chain.
8. Occasionally apply a light winter grade oil to the chute bottom ring to ease turning.
9. Always disengage the PTO before dismounting from the tractor.

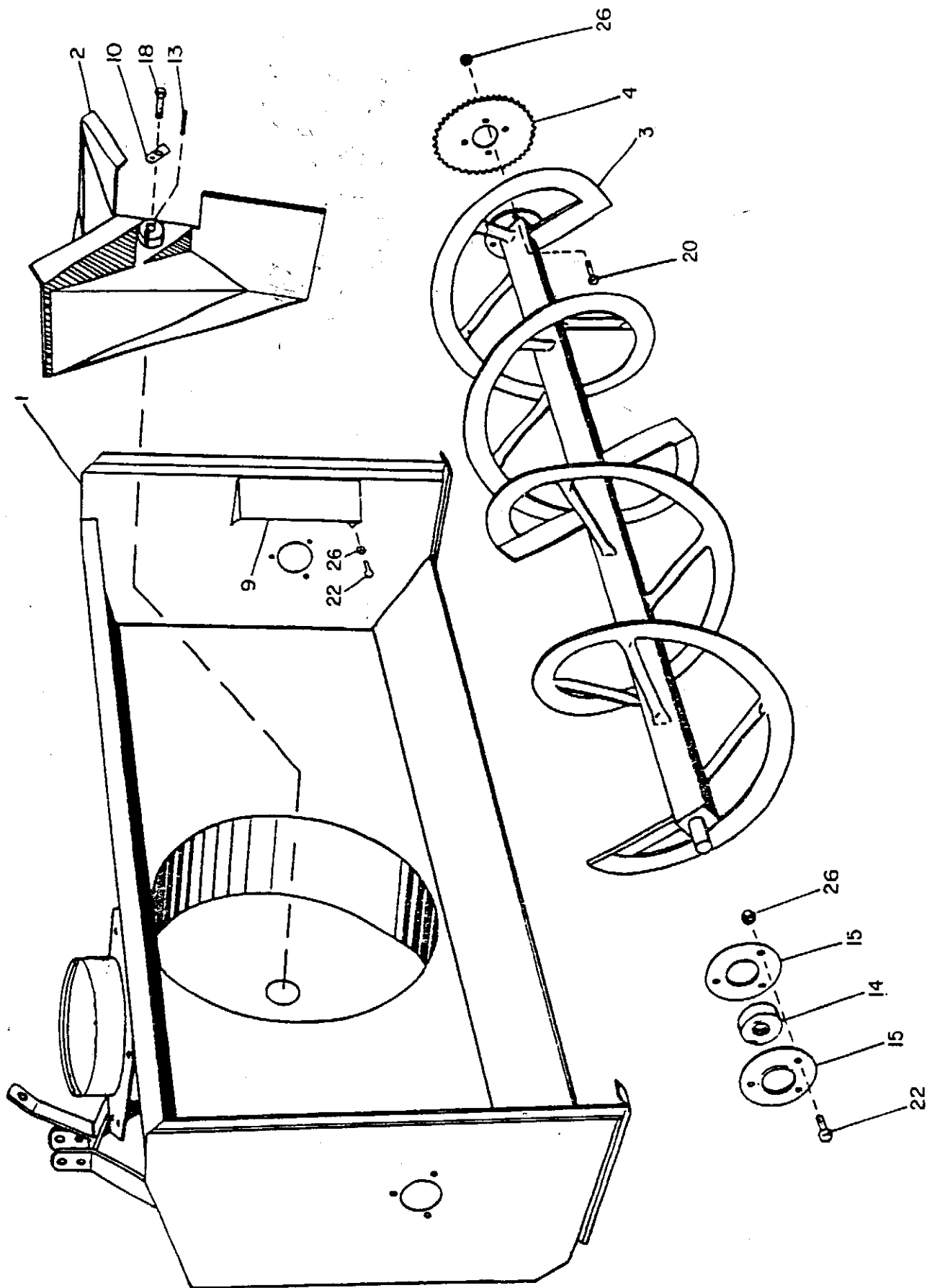
60" & 73" SNOWBLOWER

Note: grease before installation of chute
(multi purpose grease).



Note: fill gear box with
multi purpose gear
oil SAE 80.
1/5 imp. gal.

60" & 73" SNOWBLOWER



60" & 73" SNOWBLOWER

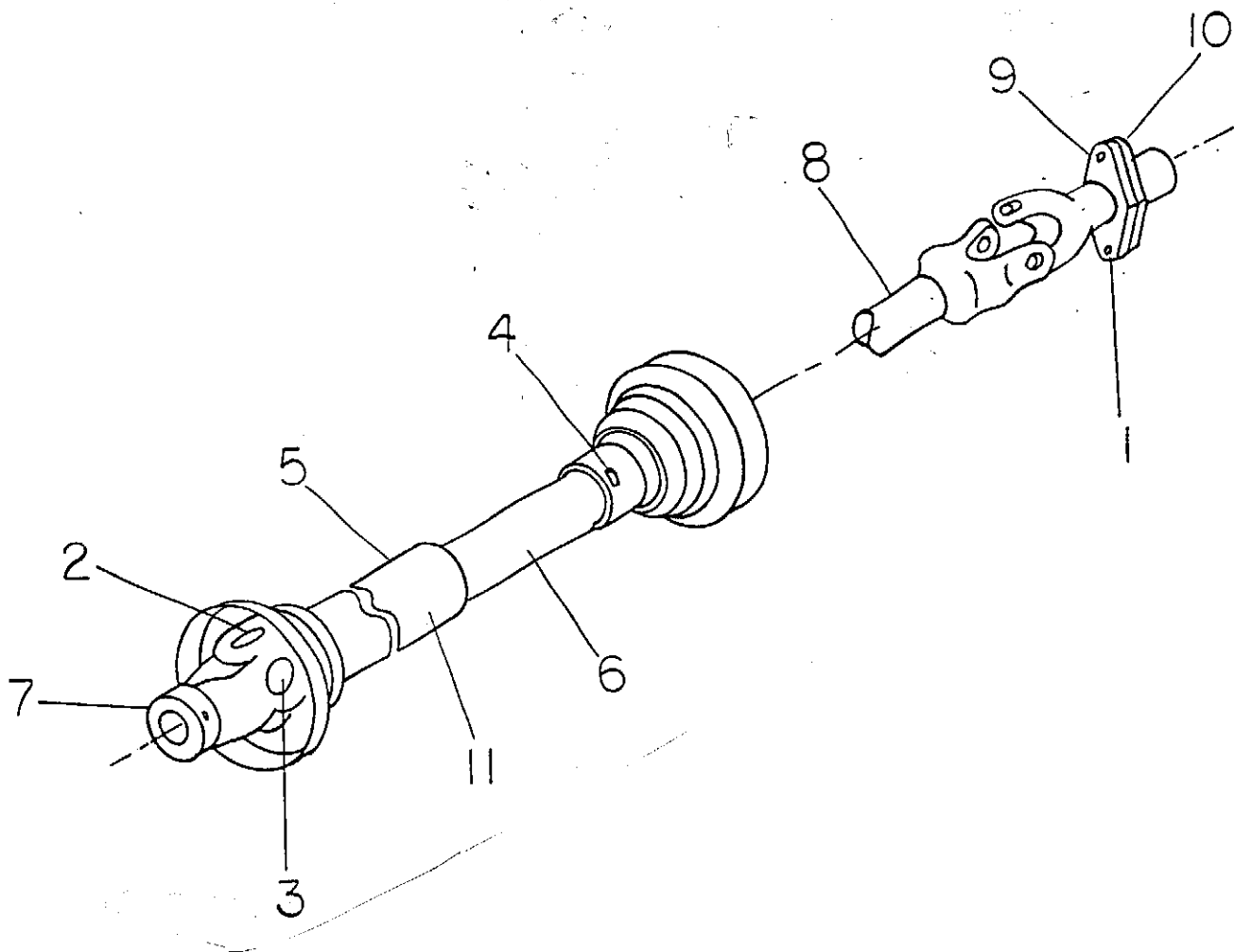
PARTS LIST

<u>ITEM</u>	<u>DESCRIPTION</u>	<u>PART #</u>	<u>QUANTITY</u>
1.	Snowblower main weldment - 60"	94024	1
	Snowblower main weldment - 73"	94023	1
2.	Blower weldment	921463	1
3.	Cross auger weldment - 60"	922739	1
	Cross auger weldment - 73"	922740	
4.	Auger sprocket	9101518	1
5.	Auger drive shaft - 60"	9105275	1
	Auger drive shaft - 73"	9101511	1
6.	Auger drive sprocket	9101516	1
7.	Tightener (Poly)	9109840	1
8.	Chain tightener washer	9105278	1
9.	Chain cover	922695	1
10.	Blower hub lock	9101765	1
11.	Category 1 hitch pin	9102242	2
12.	Drive shaft key	9101528	1
13.	Key (blower)	9101522	1
14.	Bearing 1-1/4"	9811721	3
15.	Flange housing	961637	6
16.	Chain RC-88 links	9810343	1
17.	5/8" x 3.0" bolt	984289	1
18.	5/8" x 1-1/4" bolt	9811702	1
19.	1/2" x 1.0" bolt	981619	8
20.	3/8" x 1-1/4" bolt	986171	4
21.	3/8" x 1.0" sq. hd. set screw	981213	1
22.	3/8" x 3/4" bolt	984072	11
23.	5/16" x 3-1/4" bolt	9811651	1
24.	1/4" x 1-1/2" bolt	9811631	1
25.	5/8" lock nut	984065	1
26.	3/8" lock nut	9812363	16
27.	5/8" lock nut	984065	1
28.	1/4" lock nut	984498	1
29.	11/16" flat washer	981678	2
30.	Klik pin	9810633	2
31.	1/2" lock washer	981637	8
32.	3/8" nut	981592	1
33.	Danger decal	9102893	2
34.	Allied logo decal	9102872	2
35.	Shield gearbox	9109585	1

P.T.O. DRIVE SHAFT ASSEMBLY

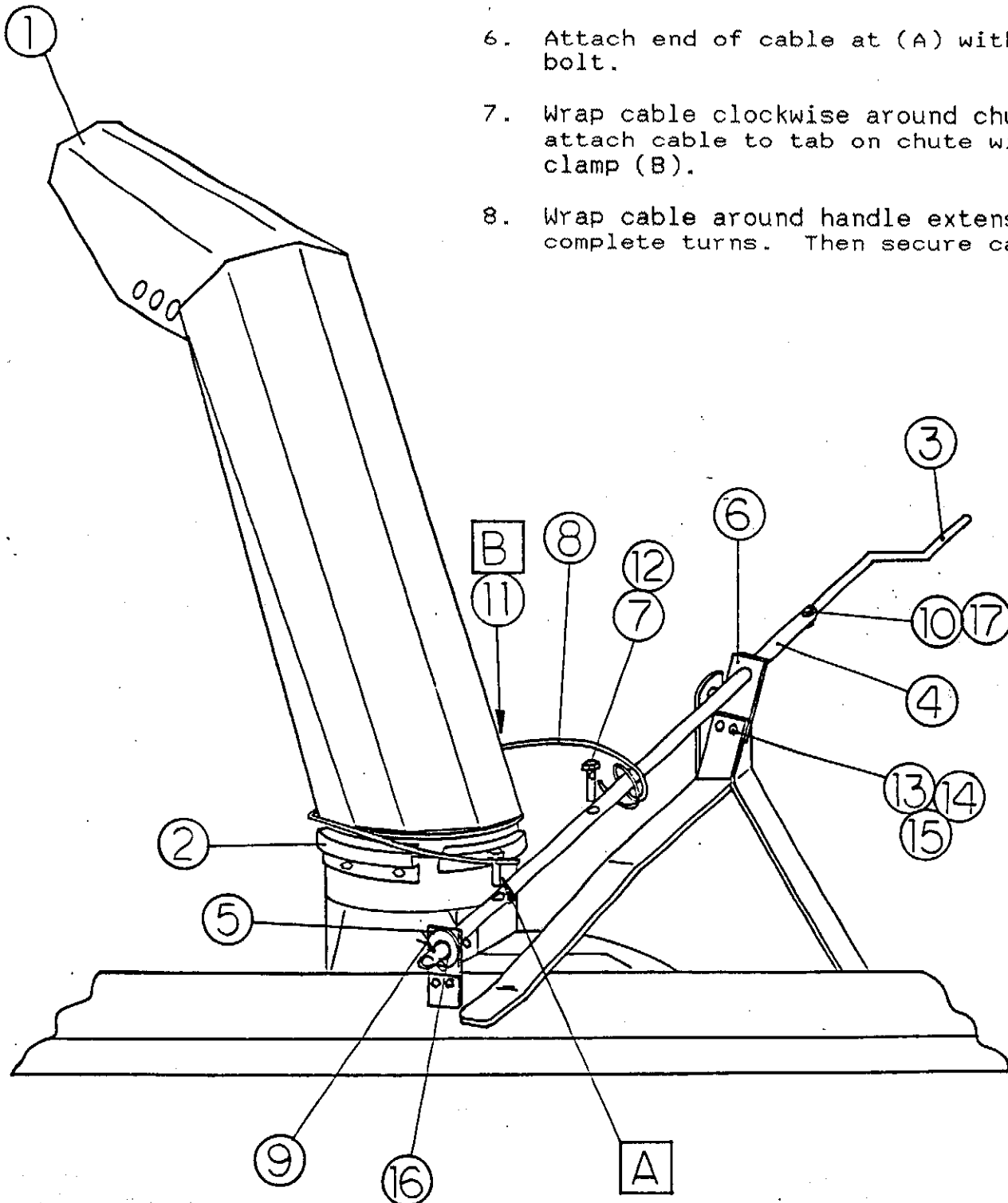
30.22 - 40.10 F108370 (94917-38) (Std.)

36.22 - 49.97 F838 (94917-39) (Optional)



ITEM	DESCRIPTION	(STD.)	(OPT.)	QUANTITY
		PART #F108370	PART # F838	
1	Shear yoke	936129	936129	1
2	Yoke and Bar Assembly	9812164	936142	1
3	Journal and Bearing kit	936025	936025	2
4	Shield bearing kit	936111	936111	1
5	Outer shield	9812166	936144	1
6	Inner shield	9812165	936143	1
7	End yoke	936027	936027	1
8	Yoke assembly	9812167	936141	1
9	3/8" lock nut	9812363	9812363	1
10	3/8" x 2 1/4" shear bolt Gr. 5	9810958	9810958	1
11	Danger decal	9812162	9812162	1
12	Pin kit	936016	936016	

8. Wrap cable around handle extension 5 complete turns. Then secure cable bolt.



MANUAL CHUTE CONTROL

1.	Discharge chute	923402
2.	Spout clamp	9108980
3.	Snow chute handle	9102157
4.	Handle extension	9108014
5.	Handle bracket	9108015
6.	Handle bracket	9108020
7.	Cable bolt	9108019
8.	Chute cable	9108265
9.	3/16" x 2.0" Cotter Pin	981207
10.	1/4" x 1 1/2" Bolt	9811631
11.	3/16" Cable clamp	965806
12.	3/8" Lock nut	9212363
13.	5/16" x 1 1/4" bolt	981552
14.	5/16" nut	981568
15.	5/16" Lockwasher	981569
16.	1 1/16" Plate washer	981746
17.	1/4" Lock nut	984498

HYDRAULIC SNOW CHUTE

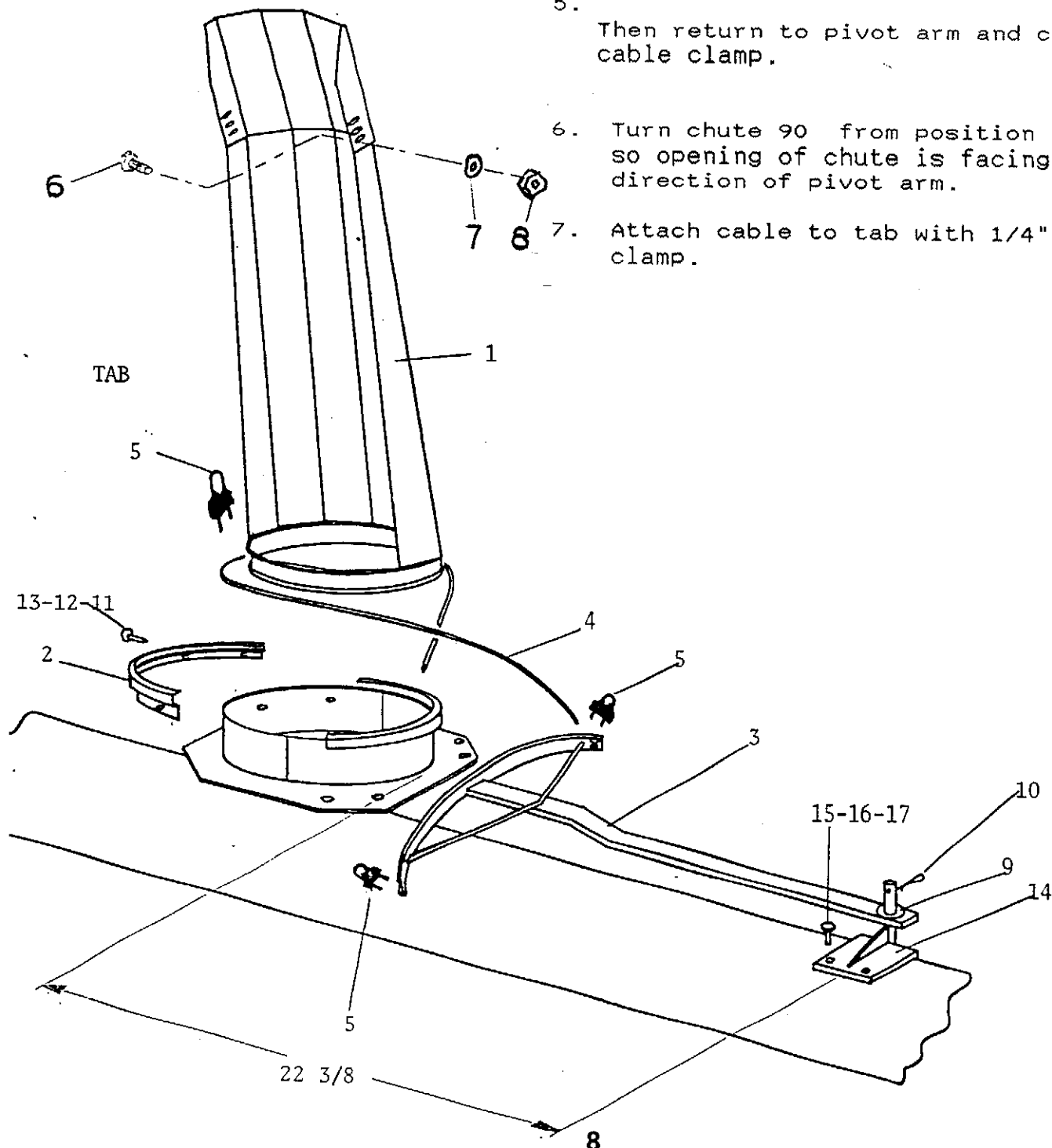
NOTE: Before mounting chute, apply a heavy coating of light grease to chute ring.

1. Position Item #14 22 3/8" from center of rod to edge of blower ring. Then using Item #14 as a template, drill 9/16" dia. holes through back plate of snowblower and mount with the 1/2" bolts supplied.
2. Remove spout clamp and mount chute.
3. Mount pivot arm. NOTE: Flat washers are supplied for height spacer if required.
4. Connect one end of cable to pivot arm with cable clamp.

5. Then return to pivot arm and connect with cable clamp.

6. Turn chute 90° from position illustrated so opening of chute is facing opposite direction of pivot arm.

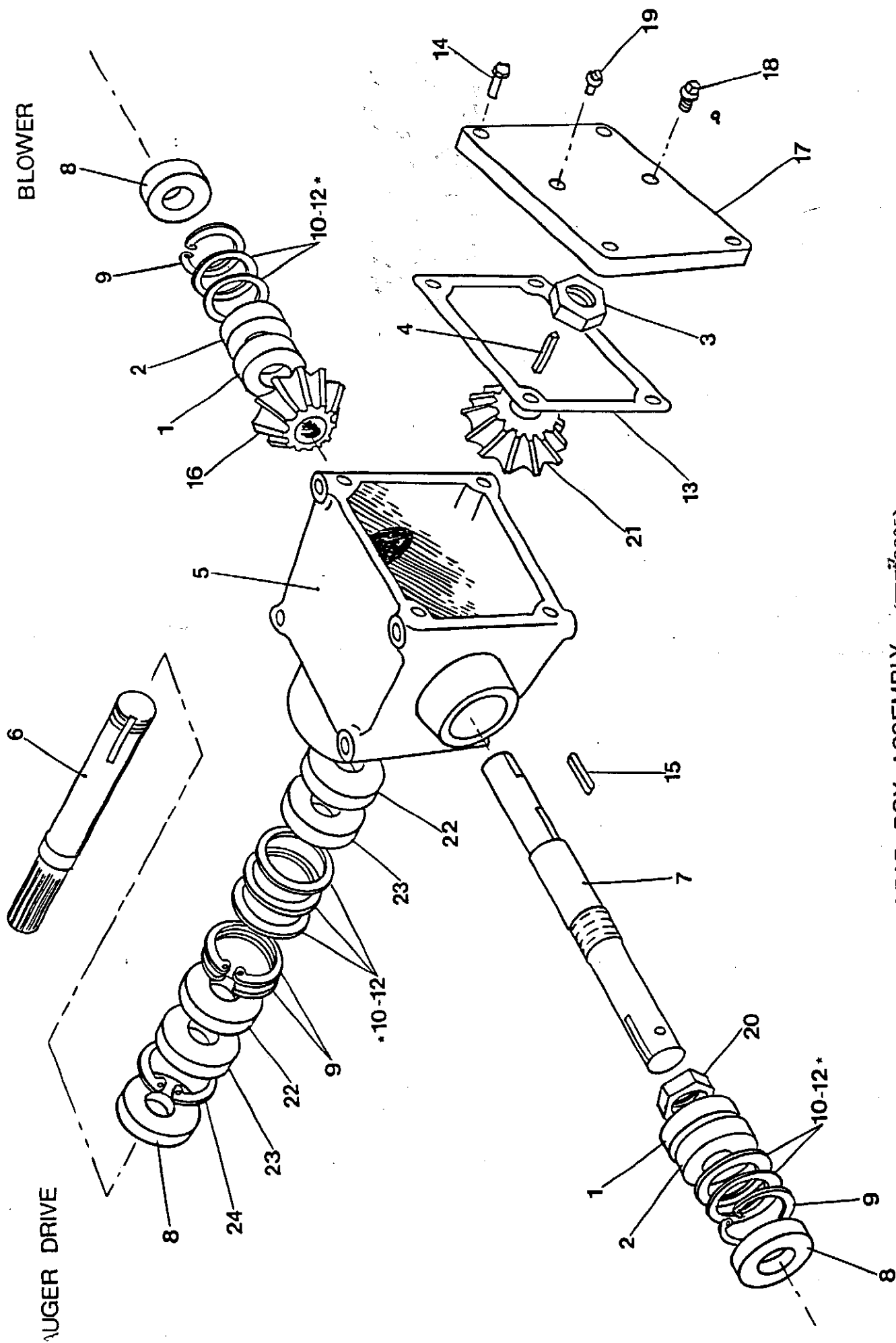
7. Attach cable to tab with 1/4" cable clamp.



OPTIONAL -HYDRAULIC SNOW CHUTE

60" AND 73" SNOWBLOWER

<u>ITEM</u>	<u>DESCRIPTION</u>	<u>PART NO.</u>	<u>QUANTITY</u>
1	Discharge chute	923402	1
2	Spout clamp	9108980	1
3	Cable pivot arm	9108979	1
4	Chute cable	9107780	1
5	1/4" Cable clamp	961658	3
6	3/8" x 3/4" cap screw	984072	2
7	3/8" flatwasher	981594	2
8	3/8" locknut	9812363	2
9	1 1/16" S.A.E. flatwasher	981746	4
10	1/4" x 2 1/2" cotter pin	9812436	1
11	5/16" x 1 1/4" bolt	981552	4
12	5/16" lockwasher	981569	4
13	5/16" nut	981568	4
14	Pivot arm mount bracket	9107775	1
15	1/2" x 1 1/2" bolt	984277	4
16	1/2" lockwasher	981637	4
17	1/2" nut	981636	4



GEAR BOX ASSEMBLY (FBU50225)

GEAR BOX ASSEMBLY

PARTS LIST

FBU 50225

<u>ITEM</u>	<u>ITEM NUMBER</u>	<u>DESCRIPTION</u>	<u>U/M</u>
1.	FBU575901	Cone (13687)	2 ea.
2.	FBU575902	Cup (13620)	2 ea.
3.	FBU50444	Staking Nut	1 ea.
4.	FBU50417-1	Key	1 ea.
5.	FBU50310	Gear Box Case	1 ea.
6.	FBU50396	Input Shaft	1 ea.
7.	FBU50383	Cross Shaft	1 ea.
8.	FBU50422-1	Oil Seal	3 ea.
9.	FBU50415	Retaining Ring	4 ea.
10.	FBU50414-1	0.005 Shim	
11.	FBU50414-2	0.010 Shim	
12.	FBU50414-3	0.020 Shim	
13.	FBU50453	Gasket	1 ea.
14.	FBU500397-6	5/16" x 5/8" HHCS	4 ea.
15.	FBU500008-34	Key	1 ea.
16.	FBU50329	Bevel Gear	1 ea.
17.	FBU50457	Cover Plate	1 ea.
18.	FBU500089-3	3/8" Pipe Plug	1 ea.
19.	FBU500167-1	1/8" Relief Valve	1 ea.
20.	FBU50428	Staking Nut	1 ea.
21.	FBU50331	Bevel Gear	1 ea.
22.	FBU575906	Cone (14137A)	2 ea.
23.	FBU575907	Cup (14276)	2 ea.
24.	FBU278811	Retaining Ring	1 ea.

NOTE: Use as many items 10 - 12 as required.