



John Deere - Parts Catalog

Printer Friendly Page

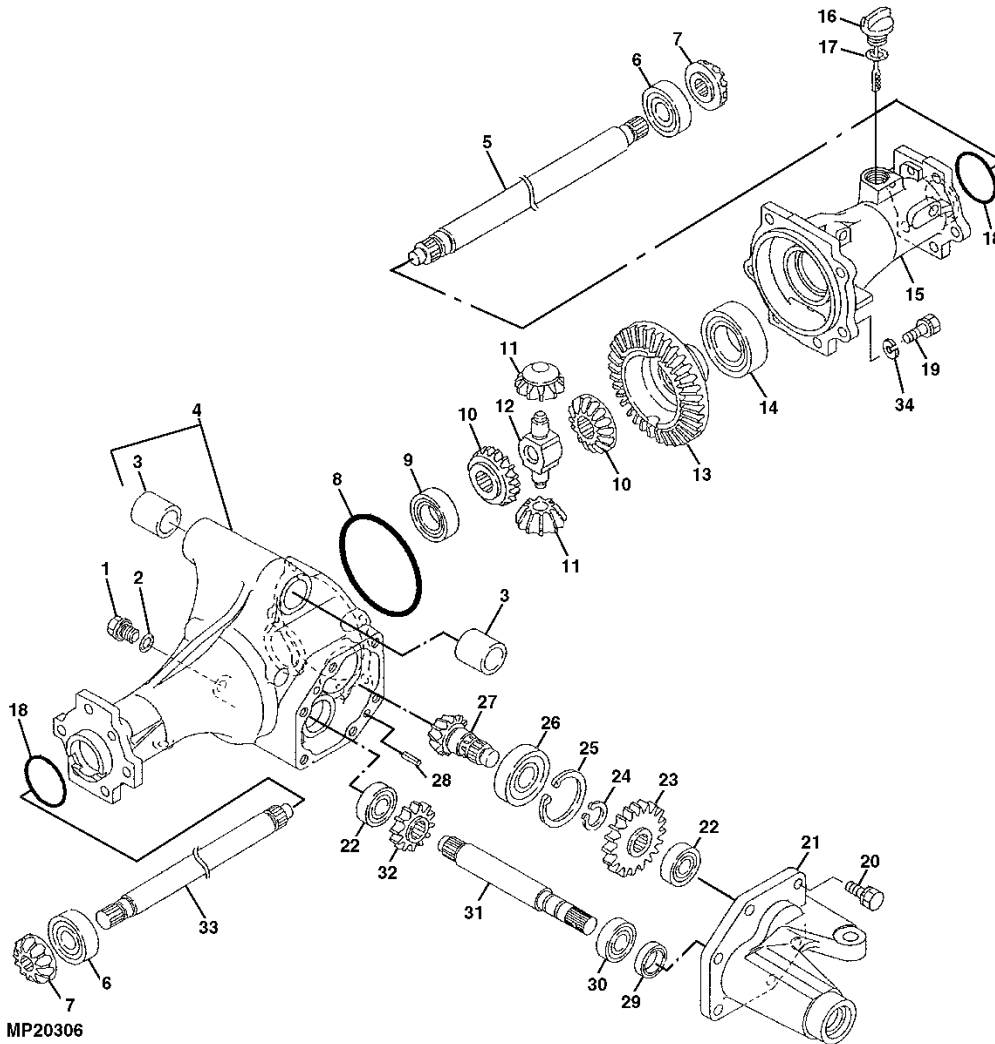
[Close Window](#)

Catalog: **2654** | Grid: **0** | Section: **55** | Page: **61**

Catalog Name: **4100 Compact Utility Tractor**

Page Name: **FRONT AXLE HOUSING**

Direction of Travel:



key	PART NO.	PART NAME	QTY	SERIAL NO.	REMARKS
1	M807505	Bolt	1		
2	M808459	Gasket	1		
3	M90574	Bushing	2		
4	AM879338	Cover	1		
5	M807499	Drive Shaft	1		
6	CH11550	Ball Bearing	2		
7	LVU800689	Gear	2		(SUB FOR M807500)
8	CH13522	Packing	1		
9	CH14828	Ball Bearing	1		
10	M808062	Gear	2		
key	PART NO.	PART NAME	QTY	SERIAL NO.	REMARKS
11	M810202	Finion	2		(SUB FOR M808063)

12	M808064	Shaft	1		
13	Gear	1	(A)	
14	CH13506	Ball Bearing	1		
15	M807504	Case	1		
16	CH14631	Dipstick	1		
17	CH14634	O-Ring	1		
18	CH11436	O-Ring	2		
19	19M7662	Cap Screw	6	M10 X 30	
20	R114408	Bolt	6		

key	PART NO.	PART NAME	QTY	SERIAL NO.	REMARKS
21	LVU800265	Cover	1		(SUB FOR M807503)
22	M802355	Bearing	2		
23	M807495	Gear	1		
24	40M7080	Snap Ring	1		
25	CH11487	Snap Ring	1		
26	CH16105	Ball Bearing	1		
27	Finion	1	(A)	
28	CH14656	Spring Pin	2		
29	M805569	Seal	1		
30	CH14811	Ball Bearing	1		

key	PART NO.	PART NAME	QTY	SERIAL NO.	REMARKS
31	M807515	Shaft	1		
32	M807516	Gear	1		
33	M807498	Drive Shaft	1		
34	12M7066	Lock Washer	6		10 mm
..	LVA800133	Kit	1		FINION DRIVE (INCLUDES PARTS MARKED (A)) (SUB FOR AM880123)
..	PM37463	Liquid Gasket	1		(3 OZ (.089 L)), (SUB FOR TY24344)
..	PM37521	Liquid Gasket	1		(10.3 OZ (.3 L)), FORM-I N-PLACE (SUB FOR TY24345)
..	TY15934	Sealant	1		(1 PINT (.47 L))