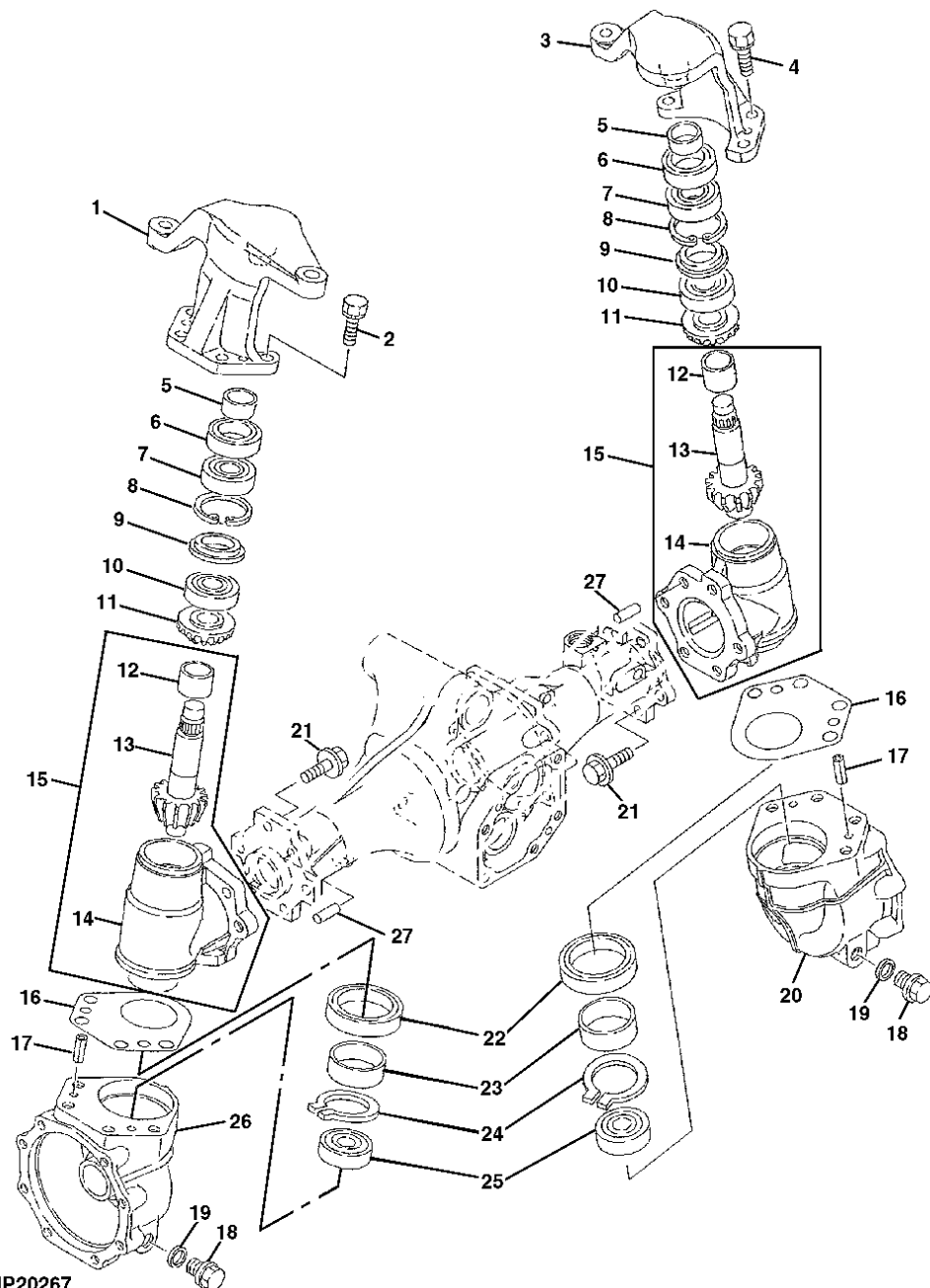


Catalog: 2654 | Grid: 0 | Section: 55 | Page: 62

Catalog Name: **4100 Compact Utility Tractor**

Page Name: **FRONT GEAR CASE**

Direction of Travel: 



MP20267

| key | PART NO. | PART NAME    | QTY | SERIAL NO. | REMARKS  |
|-----|----------|--------------|-----|------------|----------|
| 1   | M807510  | Steering Arm | 1   |            |          |
| 2   | 19M7550  | Cap Screw    | 4   |            | M10 X 35 |
|     | 12M7066  | Lock Washer  | 4   |            | 10 mm    |
| 3   | M807509  | Steering Arm | 1   |            |          |
| 4   | 19M7662  | Cap Screw    | 4   |            | M10 X 30 |
|     | 12M7066  | Lock Washer  | 4   |            | 10 mm    |

|            |                 |                  |            |                   |                        |
|------------|-----------------|------------------|------------|-------------------|------------------------|
| 5          | CH14967         | Sleeve           | 2          |                   |                        |
| 6          | M800448         | Seal             | 2          |                   |                        |
| 7          | JD7142          | Ball Bearing     | 2          |                   | (SUB FOR M800451)      |
| 8          | 40M7157         | Snap Ring        | 2          |                   | (SUB FOR CH14815)      |
| <b>key</b> | <b>PART NO.</b> | <b>PART NAME</b> | <b>QTY</b> | <b>SERIAL NO.</b> | <b>REMARKS</b>         |
| 9          | M807431         | Washer           | 2          |                   |                        |
| 10         | M807422         | Bearing          | 2          |                   |                        |
| 11         | LVU800689       | Gear             | 2          |                   | (SUB FOR M807500)      |
| 12         | LVU800629       | Bushing          | 2          |                   | (ALSO ORDER LVA803306) |
| 13         | LVU802814       | Finion Shaft     | 2          |                   | (SUB FOR LVU800546)    |
| 14         | .....           | Gear Case        | 2          |                   |                        |
| 15         | LVA803306       | Gear Case        | 1          |                   | (SUB FOR AM880071)     |
| 16         | M808574         | Shim             | 2          |                   | (SUB FOR M807507)      |
| 17         | CH14656         | Spring Fin       | 4          |                   |                        |
| 18         | M807505         | Bolt             | 2          |                   |                        |
| <b>key</b> | <b>PART NO.</b> | <b>PART NAME</b> | <b>QTY</b> | <b>SERIAL NO.</b> | <b>REMARKS</b>         |
| 19         | M806438         | Washer           | 2          |                   |                        |
| 20         | M807511         | Gear Case        | 1          |                   |                        |
| 21         | M808581         | Bolt             | 10         |                   | (SUB FOR M807488)      |
| 22         | CH14665         | Seal             | 2          |                   | (SUB FOR M807430)      |
| 23         | M807497         | Sleeve           | 2          |                   |                        |
| 24         | M807379         | Snap Ring        | 2          |                   |                        |
| 25         | M808074         | Bearing          | 2          |                   |                        |
| 26         | M807512         | Gear Case        | 1          |                   |                        |
| 27         | 44M7072         | Fin              | 2          |                   | 10 X 23 mm             |