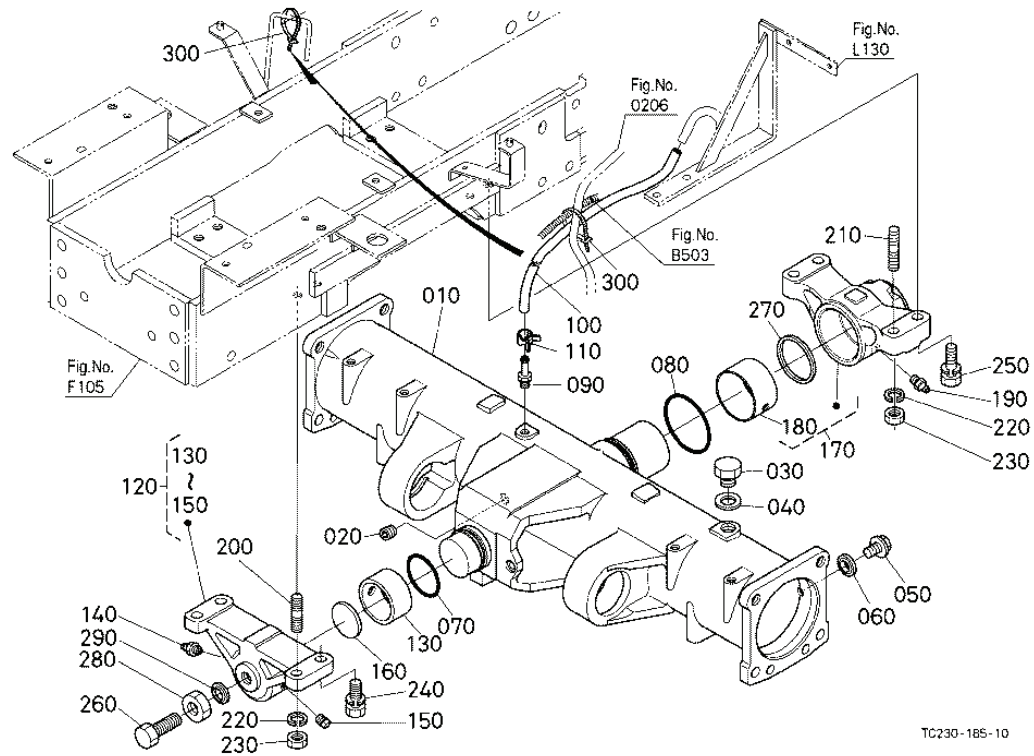


FRONT DIFFERENTIAL CASE

Figure Num 01F125



FRONT DIFFERENTIAL CASE

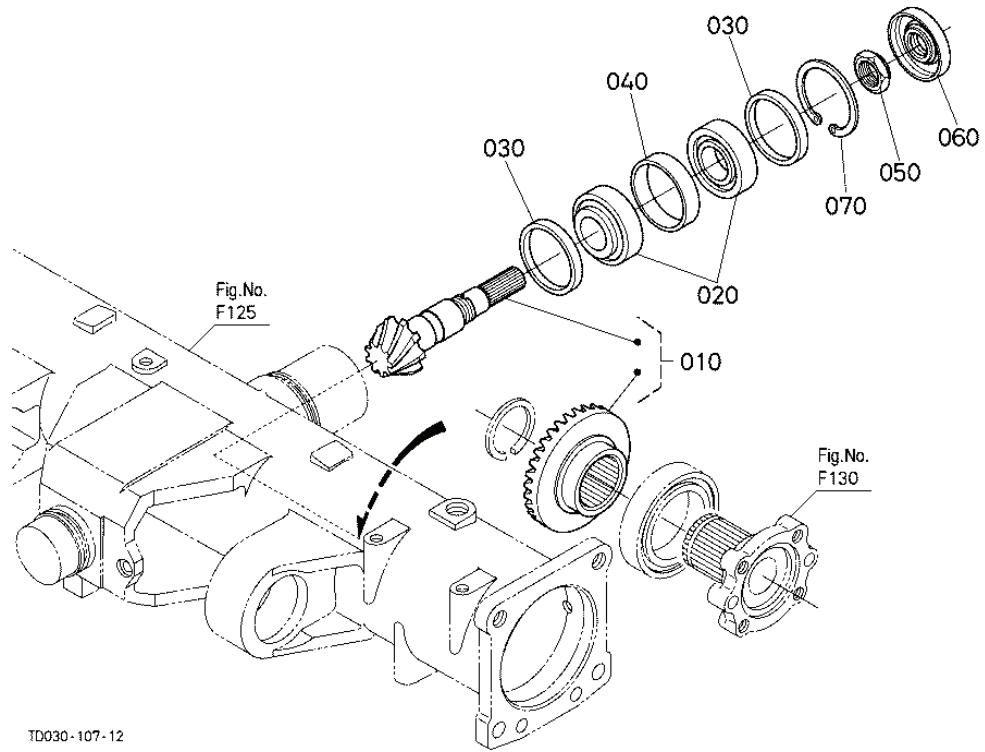
Ref	Part Number	Part Name	Qty	IC	S/N	Lbs	Remarks
010	TD030-12004	CASE FRONT AXLE	1			61.6	
020	16851-96010	PLUG	1			0.033	
030	06331-35020	PLUG	1			0.149	
040	04724-00200	GASKET	1			0.006	
050	06331-45010	PLUG	1			0.044	
060	04717-01000	WASHER WITH RUBBER	1			0.002	
070	04816-00490	O RING	1			0.011	

FRONT DIFFERENTIAL CASE

Ref	Part Number	Part Name	Qty	IC	S/N	Lbs	Remarks
080	04811-50700	O RING	1			0.004	
090	T0180-12070	PIPE BREATHER	1			0.033	
100	09663-80725	TUBE FUEL	1			0.176	
110	09318-88115	CLAMP HOSE	1			0.004	
120	TA150-13500	ASSY HOLDER FRONT	1			4.84	
130	3A021-41680	BUSH DU	1			0.136	
140	06611-15010	NIPPLE GREASE	1			0.022	
150	06312-10010	PLUG	1			0.015	
160	37410-56180	COLLAR THRUST	1			0.132	
170	TA140-13600	ASSY HOLDER REAR	1			7.04	
180	TA140-13640	BUSH	1			0.198	
190	06613-10010	NIPPLE GREASE	1			0.013	
200	01574-61235	STUD	2			0.088	
210	01574-51245	STUD	2			0.11	
220	04512-60120	WASHER SPRING	4			0.011	
230	02176-50120	NUT	4			0.022	
240	01133-51235	BOLT	2			0.094	
250	01133-51245	BOLT	2			0.121	
260	01175-51645	BOLT	1			0.198	
270	34070-13620	COLLAR THRUST	1			0.11	
280	02176-50160	NUT	1			0.046	
290	04717-01610	WASHER WITH RUBBER	1			0.013	
300	44366-68380	BAND CORD	2			0.022	

BEVEL GEAR (FRONT)

Figure Num 01F127



BEVEL GEAR (FRONT)

Ref	Part Number	Part Name	Qty	IC	S/N	Lbs	Remarks
010	TD030-12010	ASSY GEAR BEVEL	1			3.96	9-23T
020	34070-12200	BEARING TAPER-ROLLER	2			0.671	
030	34070-12100	COLLAR	2			0.044	6.2mm
030	34070-12090	COLLAR	2			0.033	6.1mm
030	34070-12080	COLLAR	2			0.033	6.0mm
030	34070-12070	COLLAR	2			0.033	5.9mm
030	34070-12060	COLLAR	2			0.033	5.8mm

BEVEL GEAR (FRONT)

Ref	Part Number	Part Name	Qty	IC	S/N	Lbs	Remarks
040	34070-12170	COLLAR	1			0.066	10.2mm
040	34070-12160	COLLAR	1			0.066	10.1mm
040	3A221-43100	COLLAR	1			0.055	10.0mm
040	34070-12140	COLLAR	1			0.044	9.9mm
040	34070-12130	COLLAR	1			0.066	9.8mm
050	37410-56710	NUT	1			0.066	
060	34070-12220	SEAL OIL	1			0.066	
070	04611-00580	CIR CLIP INTERNAL	1			0.011	