

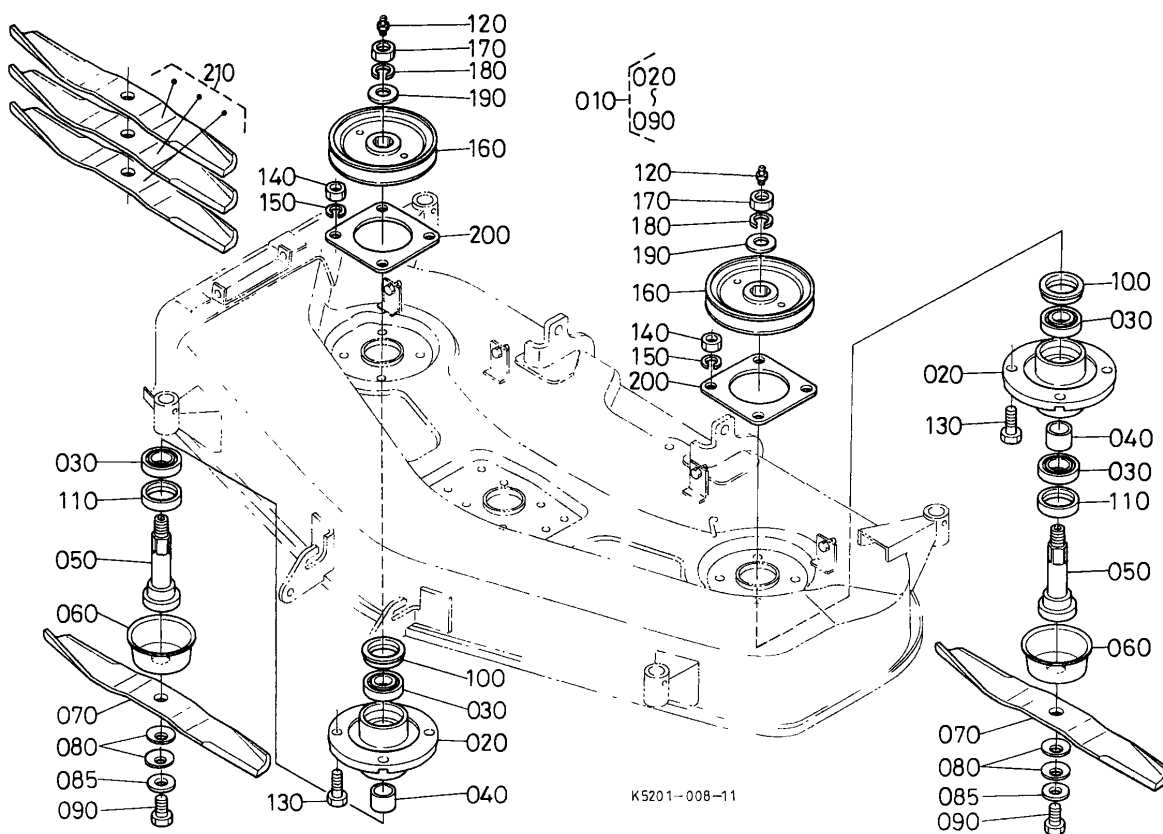
These parts diagrams are used by our staff in determining the proper parts for your equipment. Please note that the information is current as of the creation date of this document. As time passes prices increase and part numbers may be replaced by other assemblies. For the most current information please visit our website which is able to display some (not all) additional information regarding the parts that you may need. If there is ever any question of what you are looking at do not hesitate to contact us.

The listed part information links to our website. You can click and visit for the most current information, pictures, and ordering options. We are a full service dealership and pride ourselves in giving world class support to all customers. If we can assist you in anyway, please call 877-260-3528 and our staff will help guide you.

Thanks for your inquiry.

The parts staff @ Messicks.com

Kubota RCK54TG MOWER BLADE/COVER

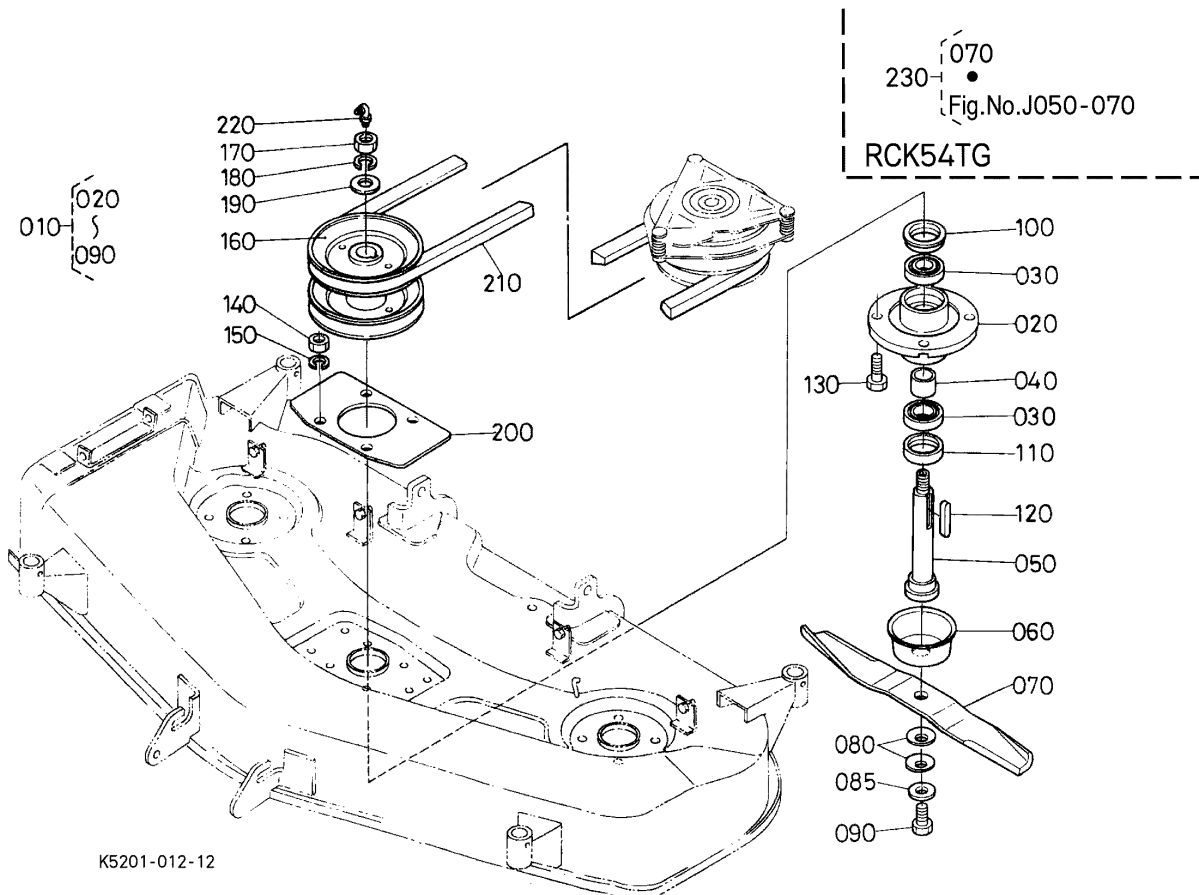


Part Number	Position	Description	Serial Break	Price	Stock	Picture?
K5221-71150	010	ASSY HOLDER PULLEY	<=24206	\$191.80	0	No
K5221-71450	010	ASSY HOLDER PULLEY	>=24207	\$129.75	0	No
K5221-71210	020	HOLDER PULLEY		\$47.90	0	No
08101-06205	030	BEARING BALL		\$6.05	60	Yes
K5221-71130	040	COLLAR		\$3.93	1	No
K5221-71220	050	SHAFT BLADE	<=24206	\$27.58	0	No
K5371-34552	050	SHAFT SIDE BLADE	>=24207	\$33.58	2	Yes
K5221-71230	060	COVER DUST	<=26664	\$3.53	0	No
K5651-34310	060	COVER DUST	>=26665	\$10.76	6	Yes
K5221-71920	070	BLADE	<=24206	\$14.73	0	No
K5351-34340	070	BLADE	>=24207	\$20.09	0	Yes
K5351-99020	070	BLADE		\$14.99	0	No
K5351-99040	070	BLADE		\$20.94	0	No
K5112-71330	080	SPRING PLATE	<=24206	\$4.36	0	No
K5371-34350	080	SPRING CORN	>=24207	\$2.14	0	No
K5371-34390	085	WASHER LOCK	>=24207	\$4.72	3	Yes
01176-51230	090	BOLT	<=24206	\$1.32	0	Yes
K5371-34370	090	BOLT BLADE	>=24207	\$8.49	1	Yes
70722-34120	100	OIL SEAL UPPER		\$10.40	8	Yes
70725-34162	110	OIL SEAL LOWER		\$7.30	18	Yes
K1122-15150	120	NIPPLE GREASE		\$1.67	1	Yes
01073-51230	130	BOLT		\$1.32	10	Yes

Part Number	Position	Description	Serial Break	Price	Stock	Picture?
02074-50120	140	NUT		\$0.70	5	Yes
04512-60120	150	WASHER SPRING		\$0.18	52	Yes
K5221-71140	160	PULLEY BLADE SIDE		\$34.40	0	No
02074-50180	170	NUT		\$1.58	10	No
04512-60180	180	WASHER SPRING		\$0.35	19	Yes
04013-50180	190	WASHER PLAIN		\$0.35	11	No
K5221-72810	200	PLATE SIDE PULLEY		\$4.14	0	No
K5221-97520	210	KIT BLADE		\$49.70	0	No

As of 04-09-2010

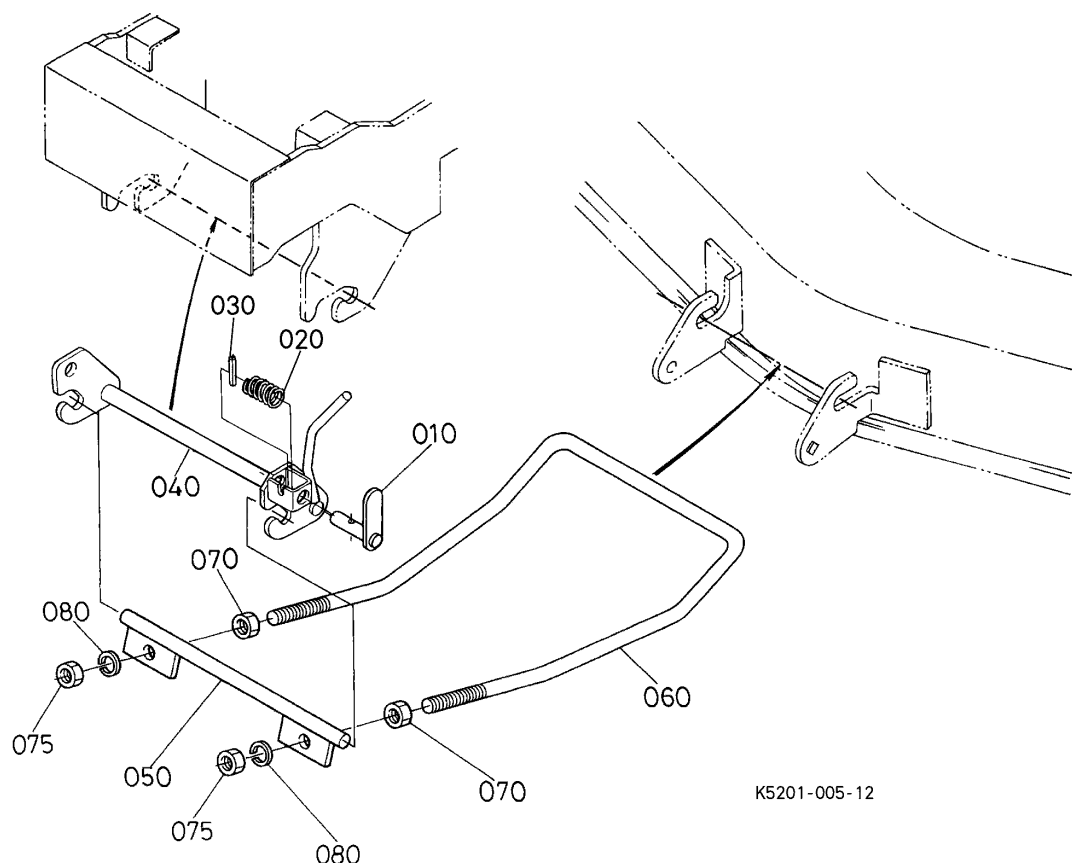
Kubota RCK54TG MOWER CENTER PULLEY



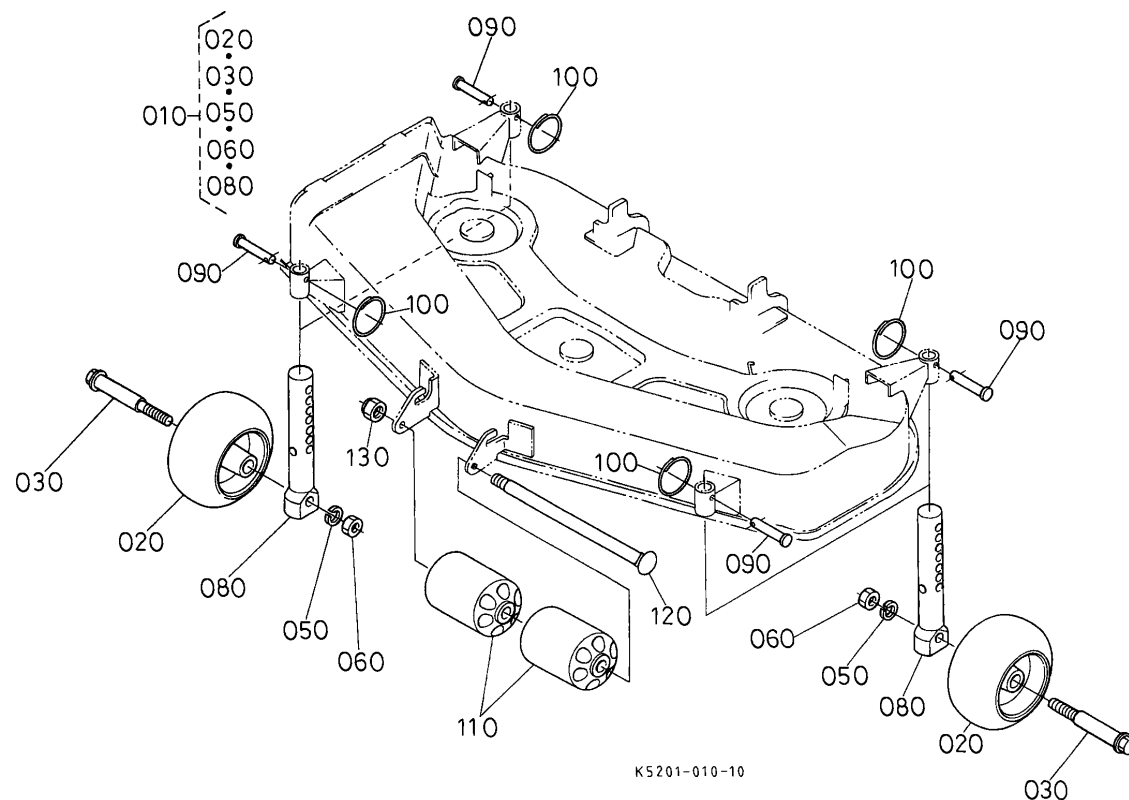
Part Number	Position	Description	Serial Break	Price	Stock	Picture?
K5221-71160	010	ASSY HOLDER PULLEY	<=24206	\$178.27	0	No
K5221-71460	010	ASSY HOLDER PULLEY	>=24207	\$184.92	0	No
K5221-71210	020	HOLDER PULLEY		\$47.90	0	No
08101-06205	030	BEARING BALL		\$6.05	60	Yes
K5221-71130	040	COLLAR		\$3.93	1	No
K5221-71270	050	SHAFT BLADE	<=24206	\$178.09	0	No
K5221-71290	050	SHAFT BLADE	>=24207	\$184.92	0	No
K5221-71230	060	COVER DUST		\$3.53	0	No
K5221-71920	070	BLADE	<=24206	\$14.73	0	No
K5351-34330	070	BLADE	>=24207	\$19.56	0	Yes
K5351-34340	070	BLADE	>=27391	\$20.09	0	Yes
K5351-34342	070	BLADE	>=28786	\$23.53	6	No
K5351-99020	070	BLADE		\$14.99	0	No
K5351-99040	070	BLADE		\$20.94	0	No
K5112-71330	080	SPRING PLATE	<=24206	\$4.36	0	No
K5371-34350	080	SPRING CORN	>=24207	\$2.14	0	No
K5371-34390	085	WASHER LOCK	>=24207	\$4.72	3	Yes
01176-51230	090	BOLT	<=24206	\$1.32	0	Yes
K5371-34370	090	BOLT BLADE	>=24207	\$8.49	1	Yes
70722-34120	100	OIL SEAL UPPER		\$10.40	8	Yes
70725-34162	110	OIL SEAL LOWER		\$7.30	18	Yes
05712-00760	120	KEY FEATHER		\$2.39	0	No

Part Number	Position	Description	Serial Break	Price	Stock	Picture?
01073-51230	130	BOLT		\$1.32	10	Yes
02074-50120	140	NUT		\$0.70	5	Yes
04512-60120	150	WASHER SPRING		\$0.18	52	Yes
K5221-71260	160	PULLEY BLADE CENTER		\$205.47	0	No
02074-50160	170	NUT		\$1.50	4	No
04512-60160	180	WASHER SPRING	>=16696	\$0.35	55	Yes
75599-33017	180	WASHER SPRING	<=16695	\$0.44	0	No
K5651-34560	190	WASHER PLAIN		\$2.77	0	No
K5221-72820	200	PLATE CENTER PULLEY		\$8.08	0	No
K5221-51310	210	V-BELT	<=16695	\$25.75	0	No
K5221-51350	210	BELT	>=16696	\$16.54	6	Yes
K1122-15150	220	NIPPLE GREASE	<=16695	\$1.67	1	Yes
K5221-71280	220	FITTING GREASE	>=16696	\$1.76	0	No
K5351-97550	230	KIT BLADE		\$56.05	0	No

As of 04-09-2010

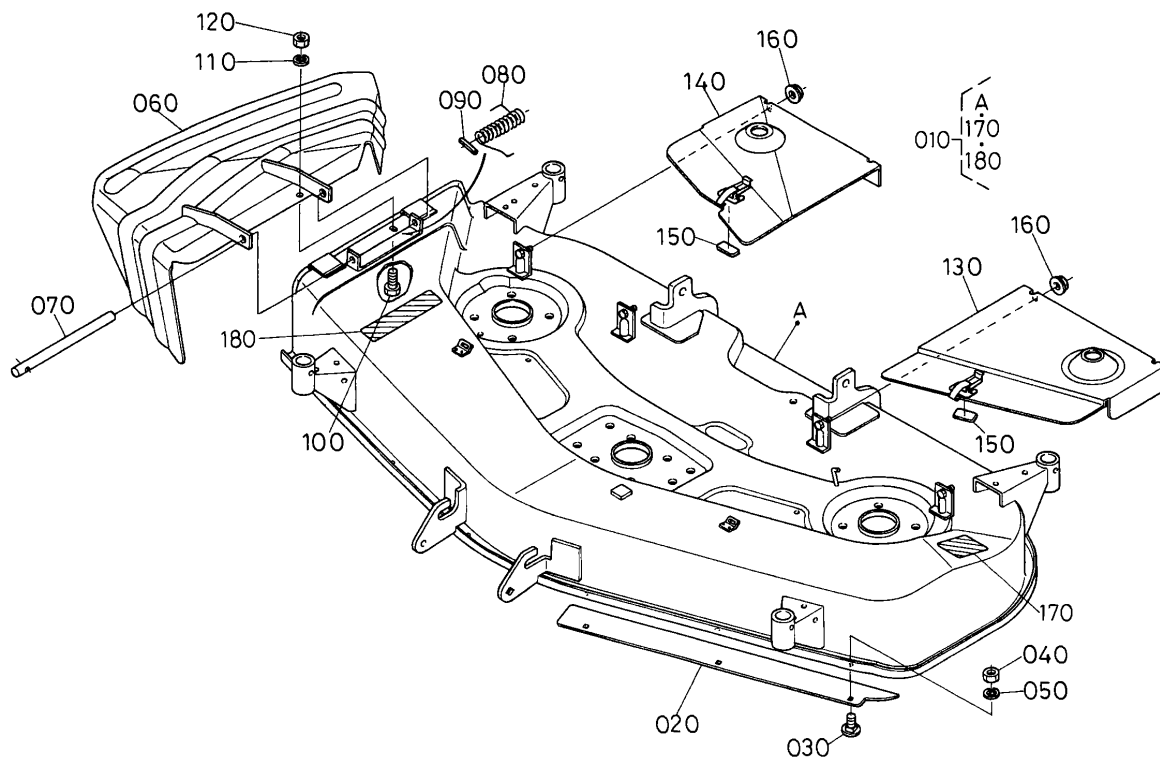
Kubota RCK54TG MOWER
FRONT LINK LEVER

Part Number	Position	Description	Serial Break	Price	Stock	Picture?
K5221-44540	010	PIN HINGE	<=28785	\$10.60	0	No
K5273-44540	010	PIN HINGE	>=28786	\$11.28	0	No
K5221-44550	020	SPRING HINGE PIN		\$1.14	0	No
05411-00650	030	PIN SPRING	>=28786	\$1.50	4	No
75599-52532	030	PIN SPRING	<=28785	\$1.58	9	Yes
K5221-44580	040	LEVER LINK	<=23242	\$22.78	0	No
K5221-44583	040	LEVER LINK	>=23243	\$22.78	0	No
K5221-44584	040	LEVER LINK	>=28786	\$22.83	0	No
K5221-44610	050	LINK FRONT		\$9.07	0	No
K5221-44620	060	LINK FRONT		\$99.50	0	No
02074-50160	070	NUT		\$1.50	4	No
K1122-91940	075	NUT LOCKING		\$1.41	0	No
75599-33017	080	WASHER SPRING LOCK		\$0.44	0	No



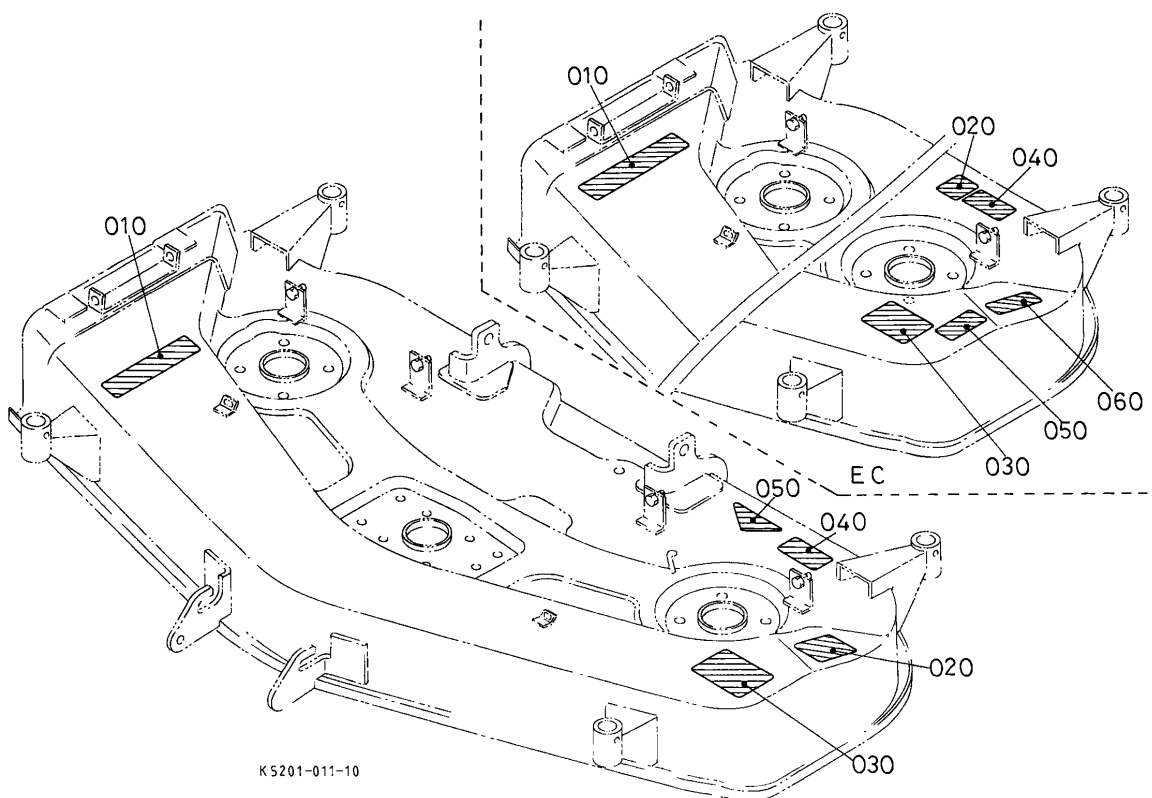
Part Number	Position	Description	Serial Break	Price	Stock	Picture?
K5221-72600	010	ASSY ROLLER ANTI-SCA		\$104.12	0	No
K5182-72410	020	ROLLER ANTI-SCALP		\$8.16	13	Yes
K5221-72670	030	BOLT SHOULDER		\$8.65	58	Yes
04512-60100	050	WASHER SPRING		\$0.10	61	Yes
02014-50100	060	NUT		\$0.30	38	Yes
K5221-72680	080	PIN GAUGE WHEEL		\$22.90	0	No
75599-51235	090	PIN CLEVIS		\$0.88	15	Yes
70712-51140	100	RING SNAP		\$2.39	12	Yes
K5112-72420	110	ROLLER ANTI-SCALP		\$9.93	2	Yes
K5221-72650	120	BOLT GAUGE		\$7.22	2	No
02572-50120	130	NUT LOCK		\$3.09	7	Yes

Kubota RCK54TG MOWER MOWER DECK AND COVER



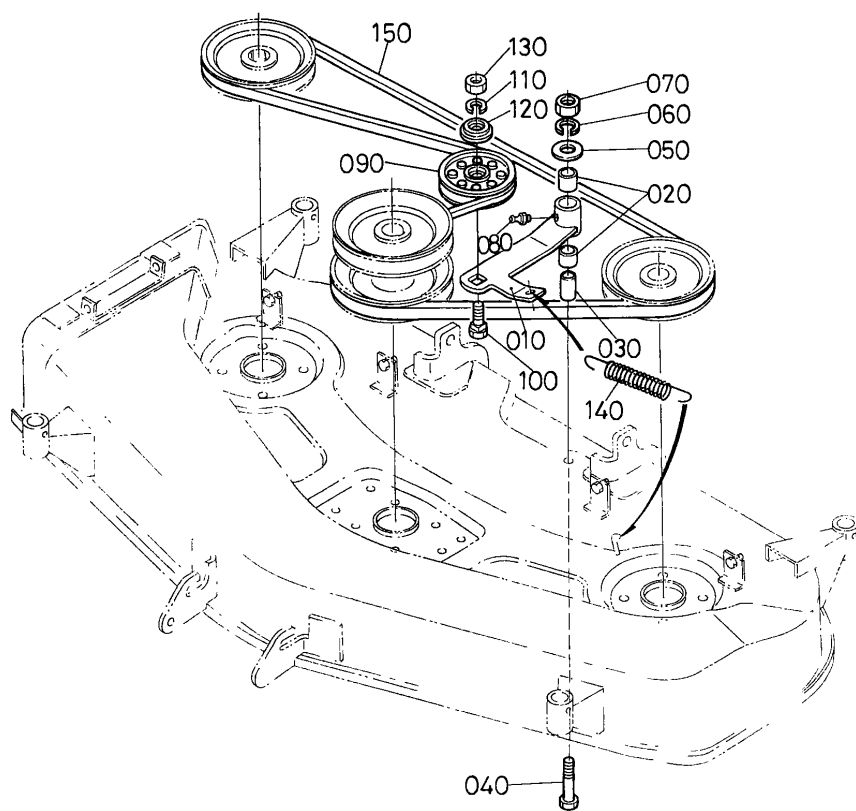
K5201-007-11

Part Number	Position	Description	Serial Break	Price	Stock	Picture?
K5221-97120	010	KIT MOWER DECK		\$847.10	0	No
K5221-72910	020	PLATE FRONT LH		\$10.60	0	No
K1122-91320	030	BOLT SHORT SQU.NECK		\$1.06	4	No
02054-50080	040	NUT		\$0.35	8	Yes
75599-33012	050	WASHER SPRING		\$0.26	17	Yes
K5651-47110	060	COVER DISCHARGE		\$80.00	0	No
K5651-47150	070	PIN DISCHARGE		\$6.49	0	No
K5651-47160	080	SPRING DISCHARGE		\$10.97	0	No
75599-52525	090	PIN SPRING		\$0.62	6	No
01073-51030	100	BOLT		\$1.06	8	Yes
04512-60100	110	WASHER SPRING		\$0.10	61	Yes
02018-50100	120	NUT		\$0.53	3	Yes
K5221-72620	130	COVER LEFT		\$36.72	0	No
K5221-72630	140	COVER RIGHT		\$35.90	0	No
K1122-57160	150	PLATE RUBBER	< =22288	\$0.96	0	No
K1122-57163	150	PLATE RUBBER	> =22289	\$1.14	0	No
02751-50080	160	NUT FLANGE		\$2.27	3	Yes
K5112-73110	170	LABEL DANGER		\$2.21	0	No
K5112-73120	180	LABEL DANGER		\$1.76	0	No



Part Number	Position	Description	Serial Break	Price	Stock	Picture?
K5112-73110	010	LABEL DANGER		\$2.21	0	No
K5112-73120	020	LABEL DANGER		\$1.76	0	No
K5221-73130	030	LABEL ANTI-SCALP		\$2.58	0	No
99999-99999	040	PLATE NAME		\$0.00	0	No
99999-99999	050	LABEL OPEI		\$0.00	0	No

As of 04-09-2010

Kubota RCK54TG MOWER
TENSION ARM

K5201-009-10

Part Number	Position	Description	Serial Break	Price	Stock	Picture?
K5221-71550	010	ARM TENSION		\$22.52	0	No
K5651-20150	020	BUSHING TENSION		\$4.90	2	No
K5651-34780	030	COLLAR TENSION		\$7.99	0	No
01073-51270	040	BOLT		\$1.70	0	No
75599-32015	050	WASHER PLAIN		\$0.26	10	No
04512-60120	060	WASHER SPRING		\$0.18	52	Yes
02074-50120	070	NUT		\$0.70	5	Yes
K1122-15150	080	NIPPLE GREASE		\$1.67	1	Yes
K5112-71650	090	PULLEY TENSION		\$14.31	1	No
0Y169-50628	100	BOLT SHORT SQU.NECK		\$1.75	0	No
75599-33013	110	WASHER SPRING		\$0.18	0	No
K5112-71660	120	COVER TENSION		\$1.93	0	No
75599-31023	130	NUT		\$0.53	4	Yes
K5142-72740	140	SPRING TENSION		\$7.49	0	No
K5221-71410	150	BELT MOWER		\$36.51	5	Yes