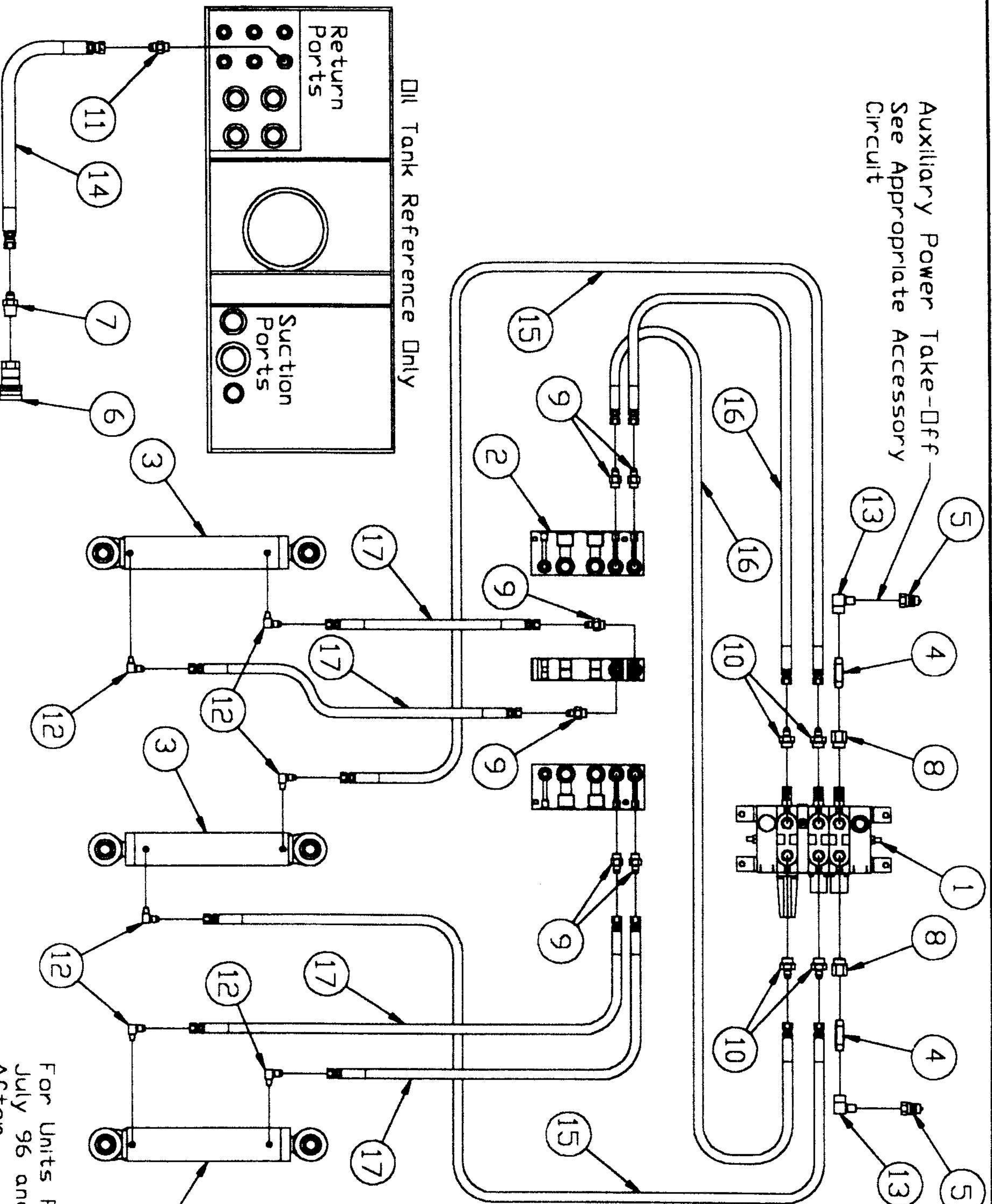


Auxiliary Power Take-Off  
See Appropriate Accessory  
Circuit



Ref	Part Number	Qty	Unit	Description
1	VE24	1	EA	Valve Bank
2	VE24	1	EA	Splitter Block Manifold
3	CQ26x2	3	EA	Lift/Tilt Cylinder
4	F401	2	EA	Pipe Nipple 1/4nat x 2"
5	F003x1	2	EA	Quick Coupler-4nptf
6	F002x3	1	EA	Quick Coupler-8nptf
7	205-06-08	1	EA	Str.Adapt-6licn-8nptn
8	269-06-04	2	EA	Reducer-6orbn-4nptn
9	315-04-06	6	EA	Str.Adapt-4licn-6orbn
10	315-06-08	4	EA	Str.Adapt-6licn-8orbn
11	315-06-06	1	EA	Str.Adapt-6licn-6orbn
12	405-04-02	6	EA	90 Elbow-4licn-2nptn
13	529-04-04	2	EA	90 Elbow-4nptn-4nptf
14	H0371JJ108	1	EA	Hose 3/8 Dia. x 108"
15	H0251JJ036	2	EA	Hose 1/4 Dia. x 36"
16	H0251JJ021	2	EA	Hose 1/4 Dia. x 21"
17	H0251JJ015	4	EA	Hose 1/4 Dia. x 15"

For Units Produced  
July 96 and  
After

CAD GENERATED

CLA			
PT-1850, PT-1845 Lift/Tilt Circuit			
DATE	12-07-96	SCALE	Full
DESIGNED BY	J. Peery	CHECKED BY	
DRAWN BY	J. Peery	REVIEWED BY	