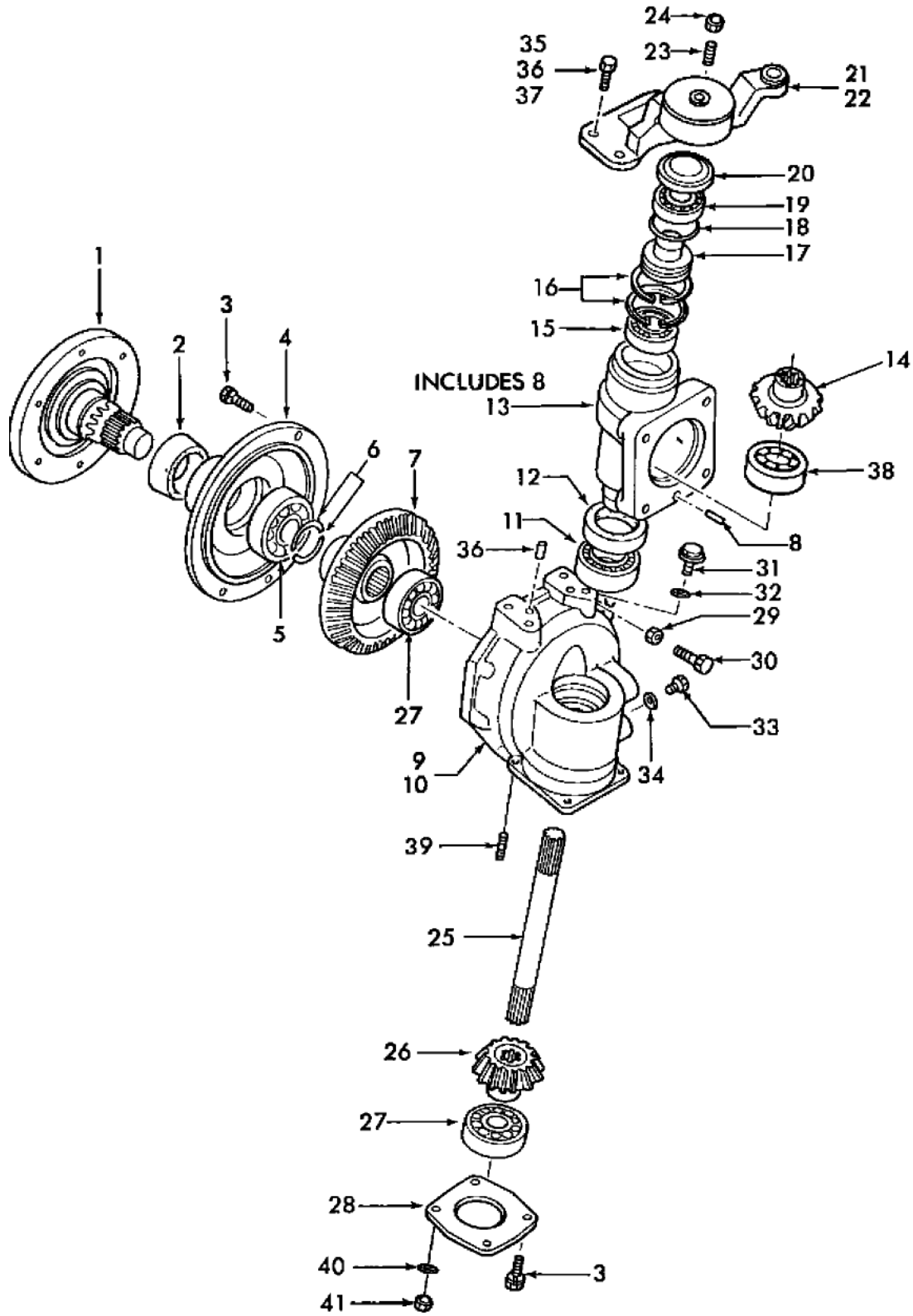


TC35 3 CYL COMPACT TRACTOR (11/99-)
04.11 FINAL REDUCTION GEARS, W/FWD



TC35 3 CYL COMPACT TRACTOR (11/99-)
04.11 FINAL REDUCTION GEARS, W/FWD

Key	Qty	Part Number	Part Name	Description
1	2	SBA326312250	Shaft	Wheel
2	4	SBA399030070	Seal	Oil
3	20	SBA011511030	Captive Washer Screw	Hex, M10 X 30, G5,
4	2	SBA322213370	Cover	
5	2	SBA040109119	Bearing Assy	Ball
6	4	SBA398340300	Clip	
7	2	SBA326370490	Gear	Final
8	2	SBA030501032	Pin	Dowel
9	1	SBA322117530	Casing	L.h. Casting # 531-1, Not Shown
10	1	SBA322117540	Casing	R.h. Casting # 541-1, Shown
11	2	SBA042532008	Tapered Roller Bearing	Includes Race
12	2	SBA399030070	Seal	Oil
13	2	SBA322117340	Casing	Includes: Ref. 8
14	4	SBA326240400	Bevel Pinion	
15	2	80037203	Bearing Assy	
16	4	370018	Snap Ring	M72, Int,
17	2	SBA330311380	Pin	King
18	2	SBA052300650	O-ring	
19	2	SBA040116207	Bearing Assy	Ball
20	2	SBA399211440	Spacer	
21	1	SBA334525150	Arm	L.h.
22	1	SBA334525160	Arm	R.h.
23	2	SBA399480281	Screw	
24	2	SBA024600010	Nut	
25	2	SBA322512381	Driven Shaft	
26	2	SBA326240330	Gear	
27	4	210048	Bearing Assy	Ball
28	2	SBA322213480	Cover	
29	2	9706685	Nut	M12, Cl 8,
30	2	300389	Bolt	Hex, M12 X 35, 8.8, Full Thd,
31	2	SBA064600016	Plug	
32	2	SBA025100016	Washer	Seal
33	2	SBA010411212	Drain Plug	M12 X 1.25,
34	3	SBA025100012	Washer	M12, Seal
35	4	SBA011511235	Bolt	M12 X 35, Lh
36	4	SBA030501025	Ball Pin	M10 X 25 L, Pin
37	4	SBA011511240	Bolt	M12 X 40, Rh
38	2	SBA040116205	Bearing Assy	Ball
39	4	SBA012111025	Bolt	
40	4	140028	Lock Washer	M10,
41	4	SBA021000010	Nut	