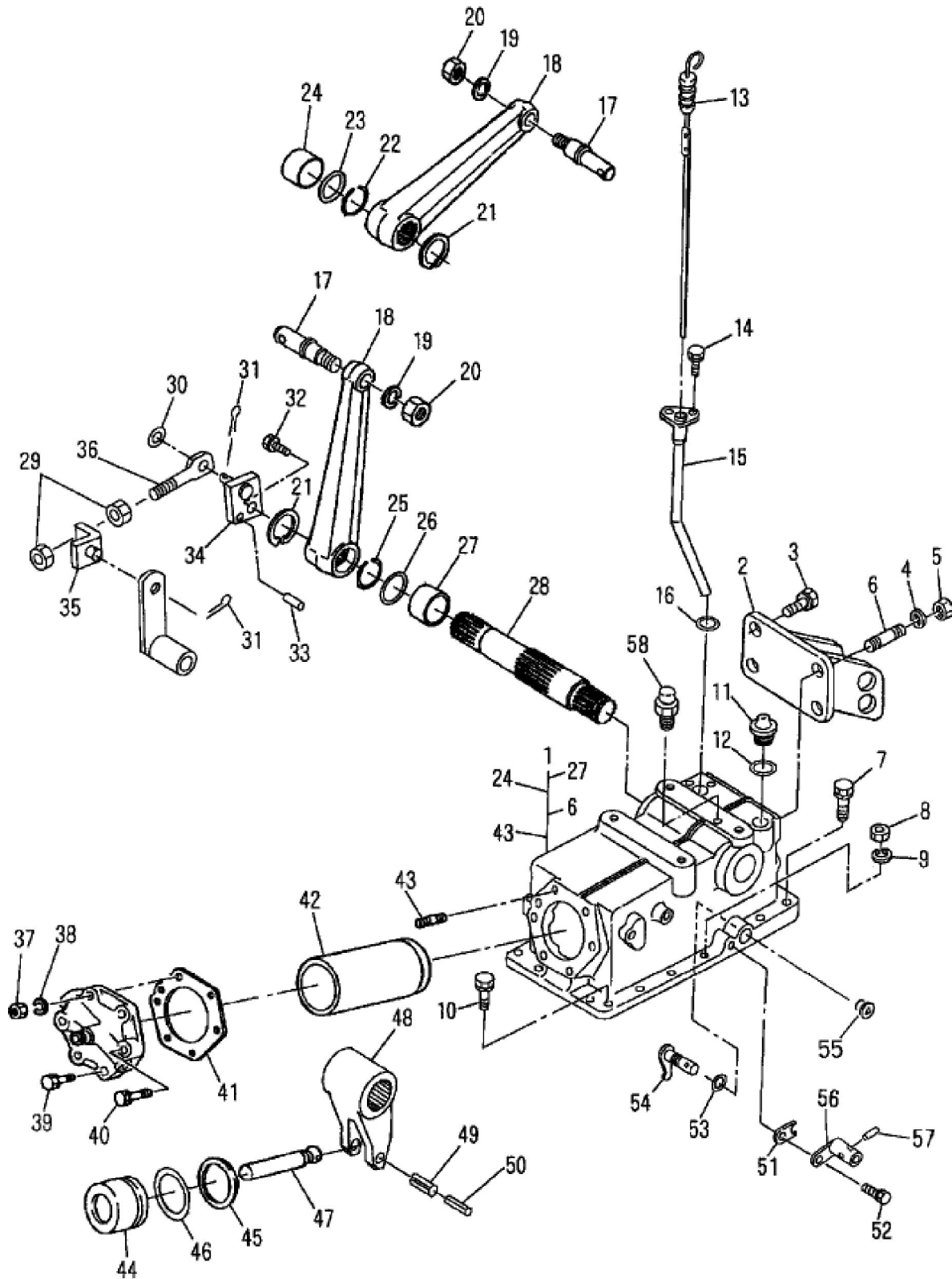


TC45 4 CYL COMPACT TRACTOR (11/99-)
07.01 HYDRAULIC LIFT COVER & ARMS

**TC45 4 CYL COMPACT TRACTOR (11/99-)
07.01 HYDRAULIC LIFT COVER & ARMS**

Key	Qty	Part Number	Part Name	Description
1	1	SBA344081300	Case	Includes: Ref. 6, 24, 27 & 43, TC35, TC35D
1	1	SBA344081310	Case	Includes: Ref. 6, 24, 27 & 43, TC40, TC40D, TD45, TC45D
2	1	SBA370301181	Bracket	Top Ring
3	3	SBA011511235	Bolt	M12 X 35,
4	1	412123	Lock Washer	M12 X 21 X 2.6 Thk,
5	1	SBA021010012	Nut	M12
6	1	SBA012111235	Stud	
7	6	SBA011511040	Bolt	M10 X 40,
8	6	SBA021010010	Nut	M10 X 1.25,
9	6	140028	Lock Washer	M10,
10	4	SBA011511030	Captive Washer Screw	Hex, M10 X 30, G5,
11	1	SBA398430560	Plug	Hydraulic Oil Filler
12	1	SBA052100280	O-ring	
13	1	SBA398400530	Dipstick	, Endyear: 03/31/2001
13	1	SBA398400531	Dipstick	, Start Year: 04/01/2001
14	2	SBA011510816	Bolt	M8 X 16
15	1	SBA344600080	Tube	Dipstick
16	1	SBA052100200	O-ring	
17	2	SBA344140170	Pin	
18	2	SBA344111230	Lift Arm	TC35, TC35D
18	2	SBA344111240	Lift Arm	TC40, TC40D, TC45, TC45D
19	2	9847025	Lock Washer	M20,
20	2	100085	Nut	M20 X 1.5, Cl 8,
21	2	370007	Snap Ring	M45, Ext, TC35, TC35D
21	2	80370008	Snap Ring	M50, Ext, TC40, TC40D, TC45, TC45D
22	1	SBA398210830	Spring	TC35, TC35D
22	1	SBA398211810	Spring	TC40, TC40D, TC45, TC45D
23	1	SBA052300500	O-ring	TC35, TC35D
23	1	SBA052300550	O-ring	TC40, TC40D, TC45, TC45D
24	1	SBA398510140	Bushing	50x55x30, TC35, TC35D
24	1	SBA398511000	Bushing	50x60x40, TC40, TC40D, TC45, TC45D
25	1	SBA398210670	Spring	TC35, TC35D
25	1	SBA398210830	Spring	TC40, TC40D, TC45, TC45D
26	1	SBA052300450	O-ring	TC35, TC35D
26	1	SBA052300500	O-ring	TC40, TC40D, TC45, TC45D
27	1	SBA398510090	Bushing	45x50x30, TC35, TC35D
27	1	SBA398511030	Drive Bushing	50x55x40, TC40, TC40D, TC45, TC45D
28	1	SBA344830371	Shaft	Hydraulic Arm, TC35, TC35D
28	1	SBA344830430	Shaft	Hydraulic Arm, TC40, TC40D, TC45, TC45D
29	2	89706690	Nut	M8, Cl 8,
30	1	9824259	Washer	M6 X 12 X 1.6,
31	2	SBA030102016	Cotter Pin	

32	1	SBA011510816	Bolt	M8 X 16
33	1	412663	Lock Pin	M5 X 10, Slotted,
34	1	SBA344200600	Rod	Connecting
35	1	SBA340300090	Stop	Lever
36	1	SBA344211130	Rod	
37	1	SBA021010012	Nut	M12
38	1	412123	Lock Washer	M12 X 21 X 2.6 Thk,
39	3	SBA011511240	Bolt	M12 X 40,
40	2	SBA011511250	Bolt	
41	1	SBA344990280	Gasket	Cylinder Head
42	1	SBA344790100	Liner	Cylinder, TC35, TC35D
42	1	SBA344790360	Liner	Cylinder, TC40, TC40D, TC45, TC45D
43	1	SBA012111240	Bolt	
44	1	SBA344760330	Piston	TC35, TC35D
44	1	SBA344760380	Piston	TC40, TC40D, TC45, TC45D
45	1	SBA344940140	Ring	Back Up, TC35, TC35D
45	1	SBA344940150	Ring	Back Up, TC40, TC40D, TC45, TC45D
46	1	SBA052110650	O-ring	TC35, TC35D
46	1	SBA052110700	O-ring	TC40, TC40D, TC45, TC45D
47	1	SBA344770300	Rod	Piston
48	1	SBA344810110	Arm	Hydraulic, TC35, TC35D
48	1	SBA344810220	Arm	Hydraulic, TC40, TC40D, TC45, TC45D
49	1	86977791	Lock Pin	M8 X 45, Slotted,
50	1	SBA030300545	Coiled Pin	Spring
51	1	SBA399564790	Plate	
52	1	SBA011510816	Bolt	M8 X 16
53	1	SBA052100140	O-ring	TC35D, TC40D, W/lst
54	1	SBA324202730	Arm	Shift, TC35D, TC40D, W/lst
55	1	SBA064200018	Cap	Sealing, W/12x12
56	1	SBA324106890	Lever	Change
57	1	9511051	Lock Pin	M6 X 30, Slotted, Spring
58	1	SBA340710030	Breather	