

MODEL LV

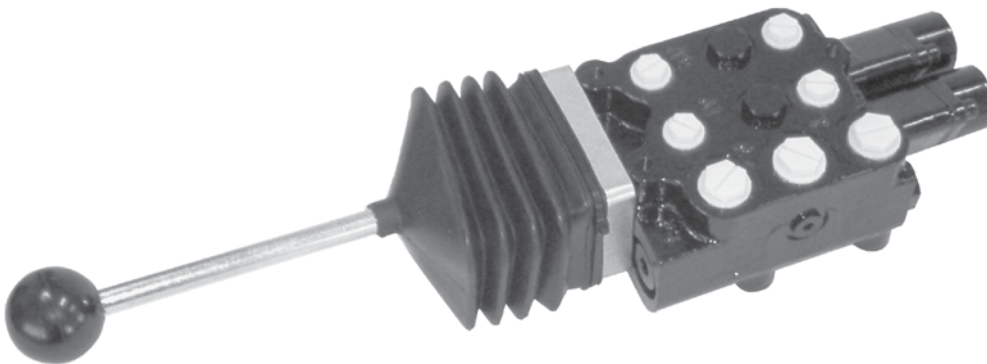
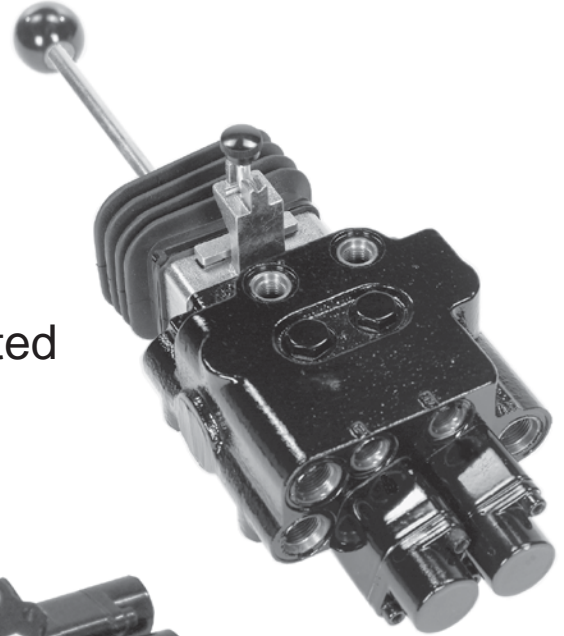
MONO-BLOCK

Directional Control Valves

Especially Suited for Front Loader Market

LVS Series Circuit

Top Ported or Semi-Rear Ported



LVT Parallel Circuit

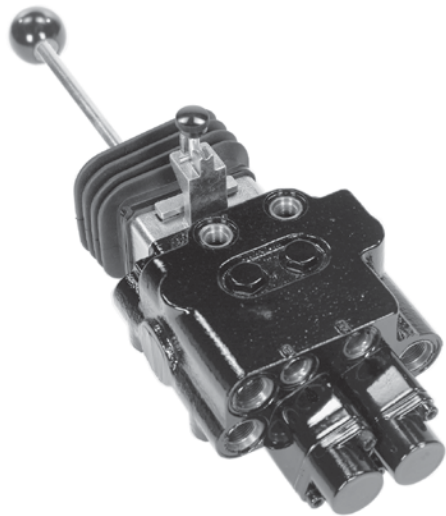
Top Ported



LVR Parallel Circuit

Rear Ported

MODEL LVS SERIES LOADER VALVE



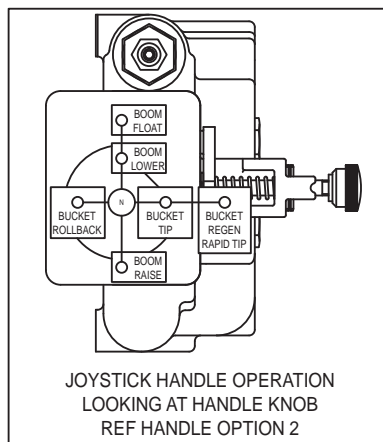
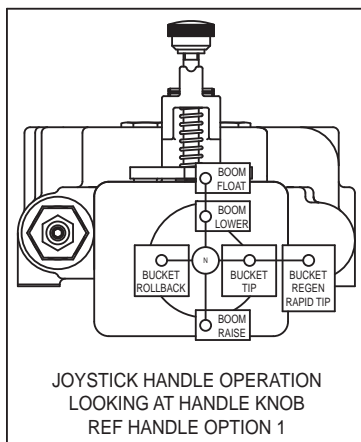
LVS SPECIFICATIONS

SERIES CIRCUIT (multifunction operation, simultaneous operation of both boom and bucket)
 MAXIMUM OPERATING PRESSURE 3000 PSI
 MAXIMUM OPERATING TEMPERATURE 180°F
 RECOMMENDED SYSTEM FILTRATION ISO 4406 19/17/14
 NOMINAL FLOW RATING..... 11 GPM
 WEIGHT 18.5lbs

STANDARD FEATURES

- Economical monoblock construction of high tensile strength gray cast iron
- Load check on each spool
- Hard chrome plated spools
- No face seals on spools
- Adjustable cartridge relief
- Power beyond available
- 4 Position Series Float Spool for loader boom
- 4 Position Regen Spool for loader bucket
- Molded rubber boot
- Patented dual spool lock joystick available

| LVS | | | | | | |
|--|---|--|---|---|---|--|
| MODEL NUMBER | INLET & TANK PORT OPTION | WORK PORT OPTION | SPOOL & ACTION | RELIEF OPTIONS | POWER BEYOND OPTIONS | HANDLE OPTIONS |
| LVS Two spool loader valve Series circuit | 1 Rear inlet & tank port #8 SAE ORB | A A & C work ports on top and B & D work ports on rear, #6 SAE ORB B Work ports on top, #6 SAE ORB C Work ports on top, #8 SAE ORB | GR Standard A-B 4 way 4 position float, spring center with float detent C-D 4 way 4 position selective regen, spring center with soft stop GB A-B 4 way 4 position float, spring center with float detent C-D 4 way 3 position spring center GF A-B 4 way 4 position float, spring center with float detent C-D 4 way 3 position (full time regen on bucket rollout) spring center | 1 No Relief 4 Direct acting adjustable 500-1500 PSI set at 1000 PSI 5 Standard: Adjustable direct acting relief 1500-3000 PSI (set at 2000 PSI) 6 Pilot relief 500-3000 PSI (set at 2000 PSI) *For other relief settings please specify (see example on the left) | A Standard open center (field convertible to #8 SAE ORB top power beyond) B #8 SAE rear power beyond Note: Not for use with closed center systems | 1 Joystick & boot w/ dual spool lock, mounting feet down/to rear 2 Joystick & boot w/ dual spool lock, mounting feet to the left 3 Joystick & boot without spool lock, mounting feet down/to rear 4 Joystick & boot without spool lock, mounting feet to the left 8 No joystick or handle (tang ends on spool only) |
| *LVS1AGR5B1-25 THE LAST TWO DIGITS ARE THE RELIEF SETTING IN HUNDREDS. EX: 25=2500 PSI @ 10 GPM ALL RELIEFS ARE SET AT 10 GPM. | | | | | | |



LVS PRESSURE DROP

| 110 SUS OIL AT 115°F | | | |
|----------------------|-----------------|---------------|----------------------|
| Δ P-PSI | | | |
| FLOW (GPM) | INLET TO OUTLET | INLET TO WORK | WORK PORTS TO OUTLET |
| 4 | 6 | 22 | 4 |
| 6 | 18 | 44 | 19 |
| 10 | 64 | 100 | 60 |

| PART NUMBER | DESCRIPTION |
|-------------|-------------------------|
| 660590029 | SEAL KIT |
| 660180170 | SPRING CENTER FLOAT KIT |
| 660180169 | SPRING CENTER REGEN KIT |
| 671400252 | ROD END |
| 660390016 | ROD END W/STUD |
| 671900084 | SLIDING SPOOL STUD |
| 660180154 | SPOOL LOCK HARDWARE |

VALVES

