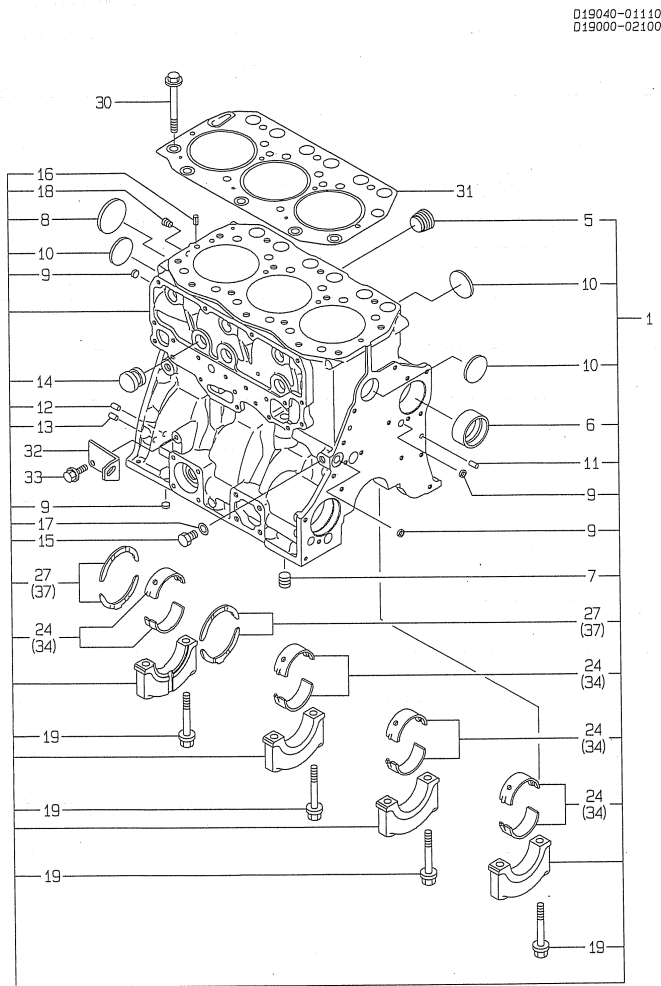


Fig.1.CYLINDER BLOCK

Y0004580
3, 4TN100 (T) L-P (S)



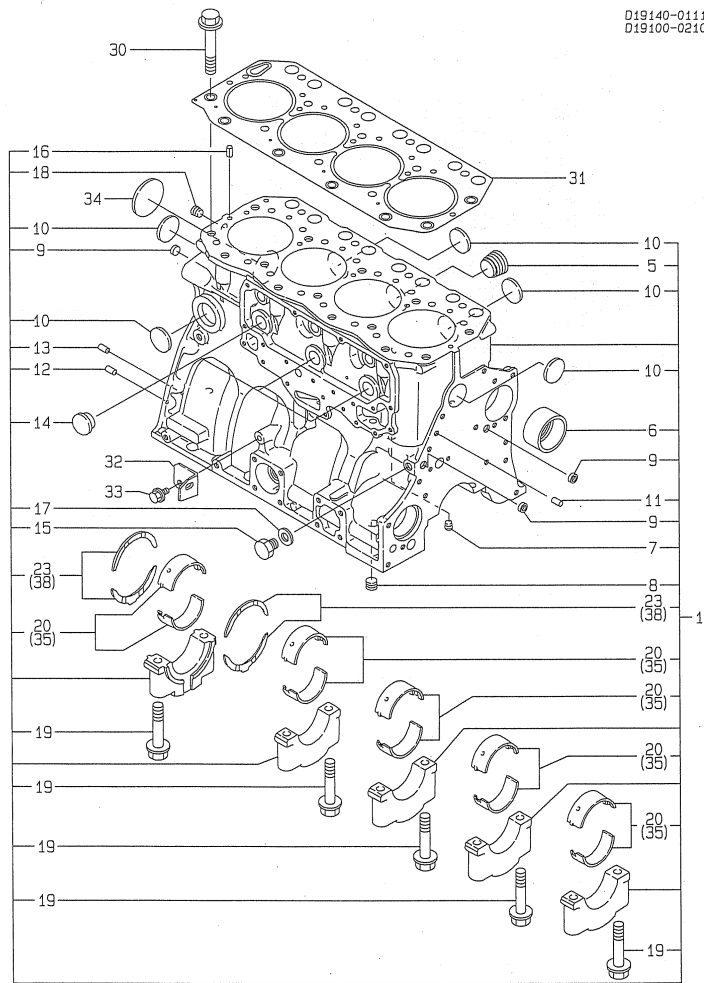
Remarks
(1) UNDER-SIZED(U.S=0.25)PART.
(2) OVER-SIZED(O.S=0.25)PART.
(G) THESE PARTS ARE SOLD BY FIG.28,
REF.NO.1,2.
(H) THESE PARTS ARE SOLD BY FIG.29,
REF.NO.1.

(A)=3TN100L-P
(B)=3TN100L-PS
(C)=4TN100L-P
(D)=4TN100L-PS
(E)=4TN100TL-P
(F)=4TN100TL-PS

REF.	LEV.	PARTS NO.	DESCRIPTION	Q'TY						I	R
				(A)	(B)	(C)	(D)	(E)	(F)		
1	1			1	1						
5	2	171051-01921	PLUG	1	1						
6	2	119000-02410	BUSH, CAMSHAFT	1	1						
7	2	23871-030000	PLUG PT38,SCREW	1	1						
8	2	27231-600000	PLUG 60	1	1						
I 9	2	27241-140000	PLUG 14	4	4						
10	2	27241-400000	PLUG 40	3	3						
11	2	129100-01580	PARALLEL PIN 8X16	2	2						
12	2	129100-01580	PARALLEL PIN 8X16	2	2						
13	2	129100-01580	PARALLEL PIN 8X16	2	2						
14	2	119000-01840	PLUG 25,RUBBER	3	3						
15	2	135602-34390	RETAINER	1	1						
16	2	22351-080016	SPRING PIN 8X16	2	2						
17	2	23414-140000	GASKET 14, ROUND	1	1						G
18	2	23871-020000	PLUG PT14,SCREW	1	1						
19	2	119000-02020	BOLT, METAL CAP	8	8						
24	2	119000-02800	METAL ASSY, MAIN	4	4						
27	2	119000-02930	WASHER, THRUST	2	2						
30	1	119000-01200	BOLT, CYLINDER HEAD	14	14						
31	1	119000-01340	GASKET, (NON-ASB)	1	1						H
32	1	119100-01980	RETAINER	1	1						
33	1	26106-080162	BOLT M 8X 16 PLATED	2	2						
34	1	719000-02870	MAIN BEARING 0.25U.S	4	4						1
37	1	719000-02940	THRUST BEARING 0.25	2	2						2

Fig.2.CYLINDER BLOCK

Y00D4580
3. 4TN100 (T) L-P (S)



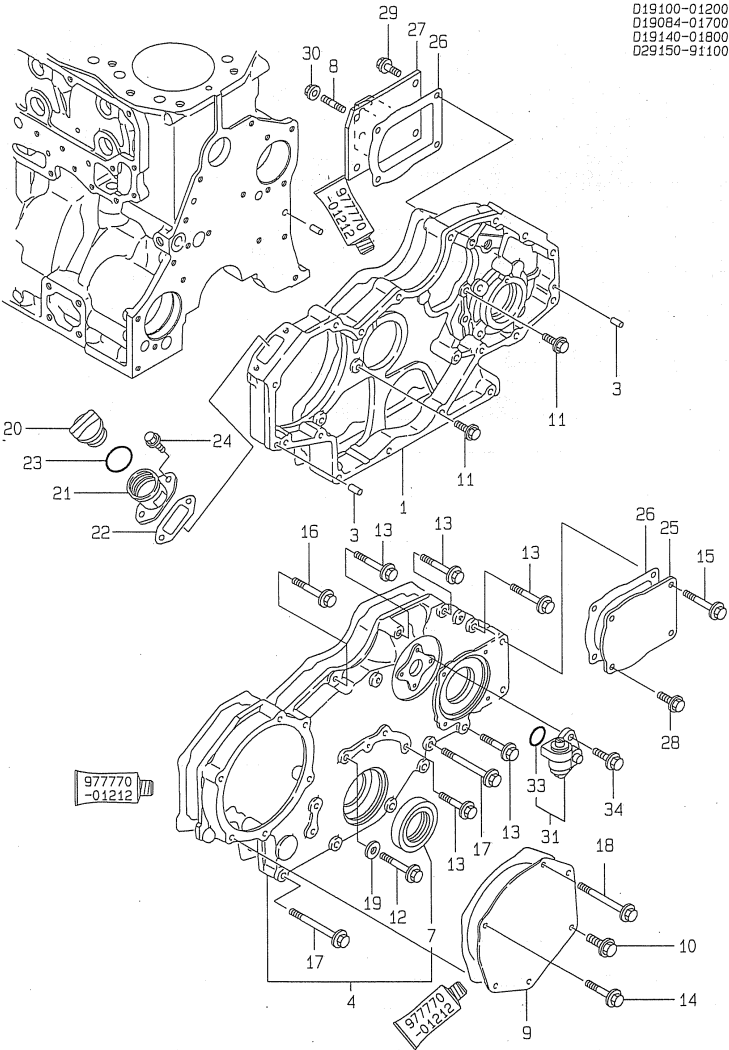
Remarks
(1) UNDER-SIZED(U.S=0.25)PART.
(2) OVER-SIZED(O.S=0.25)PART.
(G) THESE PARTS ARE SOLD BY FIG.29,
REF.NO.2,3.
(H) THESE PARTS ARE SOLD BY FIG.28,
REF.NO.2.

(A)=3TN100L-P
(B)=3TN100L-PS
(C)=4TN100L-P
(D)=4TN100L-PS
(E)=4TN100TL-P
(F)=4TN100TL-PS

REF.	LEV.	PARTS NO.	DESCRIPTION	Q'TY						I	R
				(A)	(B)	(C)	(D)	(E)	(F)		
1	1	719141-01561	BLOCK ASSY, CYLINDER			1	1	1	1		
5	2	171051-01921	PLUG			1	1	1	1		
6	2	119000-02410	BUSH, CAMSHAFT			1	1	1	1		
7	2	23871-010000	PLUG PT1/8,SCREW			1	1	1	1		
8	2	23871-030000	PLUG PT3/8,SCREW			1	1	1	1		
I	9	27241-140000	PLUG 14			4	4	4	4		
10	2	27241-400000	PLUG 40			5	5	5	5		
11	2	129100-01580	PARALLEL PIN 8X16			2	2	2	2		
12	2	129100-01580	PARALLEL PIN 8X16			2	2	2	2		
13	2	129100-01580	PARALLEL PIN 8X16			2	2	2	2		
14	2	119000-01840	PLUG 25,RUBBER			3	3	3	3		
15	2	135602-34390	RETAINER			1	1	1	1		
16	2	22351-080016	SPRING PIN 8X16			2	2	2	2		
17	2	23414-140000	GASKET 14, ROUND			1	1	1	1		H
18	2	23871-020000	PLUG PT1/4,SCREW			1	1	1	1		
19	2	119000-02020	BOLT, METAL CAP			10	10	10	10		
20	2	119000-02800	METAL ASSY, MAIN			5	5	5	5		
23	2	119000-02930	WASHER, THRUST			2	2	2	2		
30	1	119000-01200	BOLT, CYLINDER HEAD			18	18	18	18		
31	1	119100-01340	GASKET, (NON-ASB)			1	1	1	1		G
32	1	119100-01980	RETAINER			1	1	1	1		
33	1	26106-080162	BOLT M 8 X 16 PLATED			2	2	2	2		
34	1	27231-600000	PLUG 60			1	1	1	1		
35	1	719000-02870	MAIN BEARING 0.25U.S			5	5	5	5		1
38	1	719000-02940	THRUST BEARING 0.25			2	2	2	2		2

Fig.3.GEAR HOUSING

Y00D4580
3, 4TN100 (T) L-P (S)



D19100-01200
D19084-01700
D19140-01800
D29150-91100

977770
-01212

Remarks

(G) THESE PARTS ARE SOLD BY FIG.28,
REF.NO.1,2.

3.GEAR HOUSING

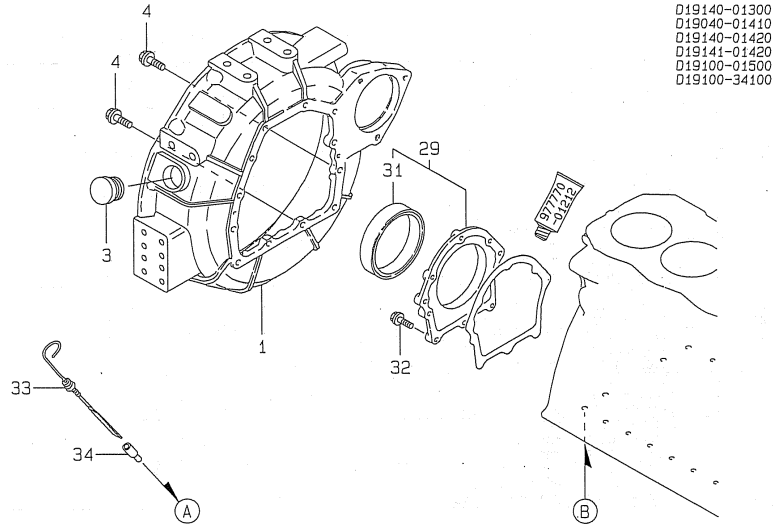
(A)=3TN100L-P
(B)=3TN100L-PS
(C)=4TN100L-P

(D)=4TN100L-PS
(E)=4TN100TL-P
(F)=4TN100TL-PS

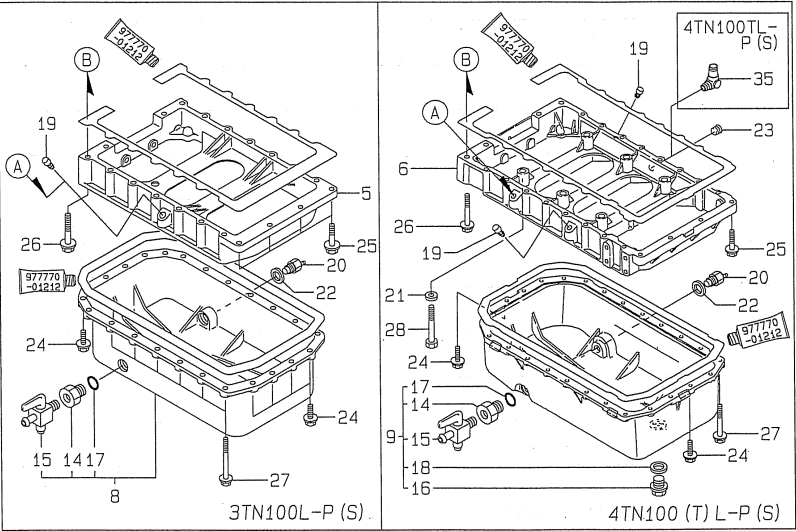
REF.	LEV.	PARTS NO.	DESCRIPTION	Q'TY						I	R
				(A)	(B)	(C)	(D)	(E)	(F)		
1	1	119000-01500	HOUSING, GEAR	1	1	1	1	1	1		
3	1	129100-01580	PARALLEL PIN 8X16	2	2	2	2	2	2		
4	1	119000-01590	COVER, GEAR HOUSING	1	1	1	1	1	1		
7	2	121850-01800	SEAL, OIL	1	1	1	1	1	1		G
8	1	121850-01920	STUD M 8X 22	2	2	2	2	2	2		
9	1	119000-01930	COVER	1	1	1	1	1	1		
10	1	26106-080182	BOLT M 8X 18 PLATED	1	1	1	1	1	1		
11	1	26106-080202	BOLT M 8X 20 PLATED	5	5	5	5	5	5		
12	1	26106-080402	BOLT M 8X 40 PLATED	1	1	1	1	1	1		
13	1	26106-080452	BOLT M 8X 45 PLATED	5	5	5	5	5	5		
14	1	26106-080452	BOLT M 8X 45 PLATED	3	3	3	3	3	3		
15	1	26106-080502	BOLT M 8X 50 PLATED	2	2	2	2	2	2		
16	1	26106-080552	BOLT M 8X 55 PLATED	1	1	1	1	1	1		
17	1	26106-080752	BOLT M 8X 75 PLATED	4	4	4	4	4	4		
18	1	26106-080902	BOLT M 8X 90 PLATED	2	2	2	2	2	2		
19	1	43400-500420	SEAL WASHER 8	1	1	1	1	1	1		G
20	1	124160-01751	COVER, FILLER	1	1	1	1	1	1		
21	1	119000-01760	FLANGE	1	1	1	1	1	1		
22	1	119000-01771	GASKET, (NON ASB)	1	1	1	1	1	1		G
I 23	1	24311-000320	O-RING 1A P-32.0	1	1	1	1	1	1		G
24	1	26106-080252	BOLT M 8X 25 PLATED	2	2	2	2	2	2		
25	1	124610-01851	COVER, BLIND	1	1	1	1	1	1		
26	1	124610-01862	PACKING, COVER	2	2	2	2	2	2		G
I 27	1	119140-39480	MOUNT, LUB. OIL SENSOR	1	1	1	1	1	1		
28	1	26106-080202	BOLT M 8X 20 PLATED	2	2	2	2	2	2		
29	1	26106-080202	BOLT M 8X 20 PLATED	2	2	2	2	2	2		
30	1	26366-080002	NUT M 8	2	2	2	2	2	2		
31	1	129150-91400	GEAR UNIT, TACHOMETER	1	1	1	1	1	1		
33	2	24341-000240	O-RING 1A S-24.0	1	1	1	1	1	1		G
34	1	26106-060162	BOLT M 6X 16 PLATED	2	2	2	2	2	2		

Fig.4.FLIWHEEL HOUSING & OIL SUMP

Y00D4580
3, 4TN100 (T) L-P (S)



D19140-01300
D19040-01410
D19140-01420
D19141-01420
D19100-01500
D19100-34100



Remarks
(G) THESE PARTS ARE SOLD BY FIG.28,
REF.NO.1,2.

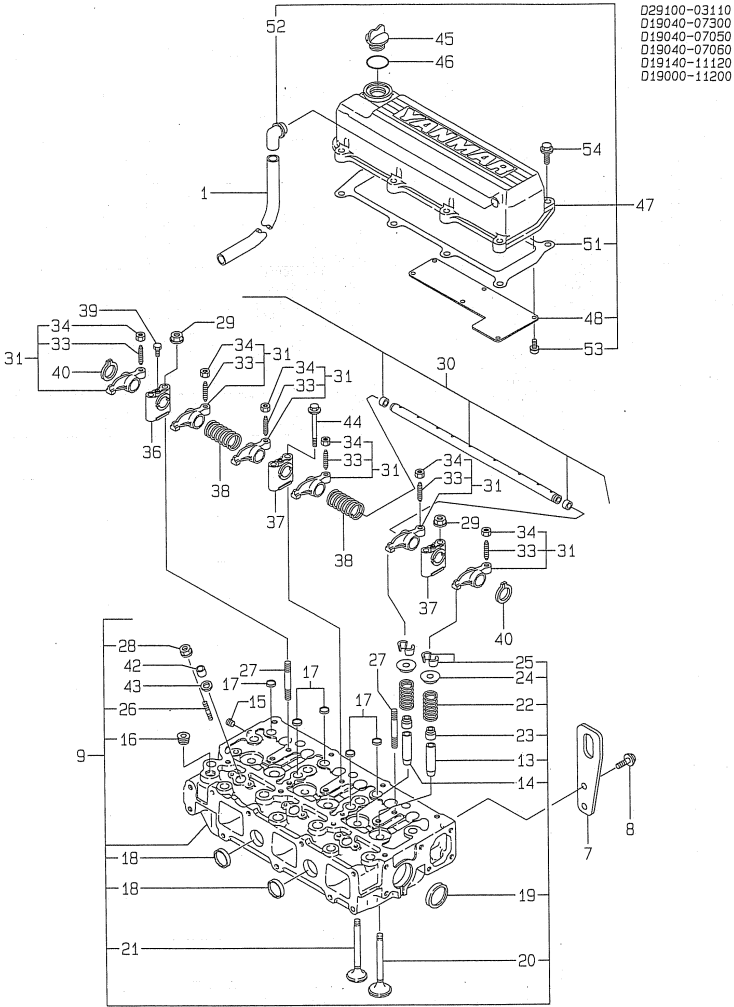
4.FLIWHEEL HOUSING & OIL SUMP

(A)=3TN100L-P
(B)=3TN100L-PS
(C)=4TN100L-P
(D)=4TN100L-PS
(E)=4TN100TL-P
(F)=4TN100TL-PS

REF.	LEV.	PARTS NO.	DESCRIPTION	Q'TY						I	R
				(A)	(B)	(C)	(D)	(E)	(F)		
1	1	119140-01600	HOUSING, FLYWHEEL	1	1	1	1	1	1		
3	1	129795-11750	CAP	1	1	1	1	1	1		
4	1	26106-100302	BOLT M10X30 PLATED	12	12	12	12	12	12		
5	1	119000-01730	SPACER, OIL SUMP	1	1						
6	1	119100-01730	INTERMEDIATE, SUMP			1	1	1	1		
8	1	119040-01790	OIL PAN ASSY	1	1						
9	1	119140-01790	OIL PAN ASSY			1	1	1	1		
14	2	129113-01740	SOCKET M22XPT3/8	1	1	1	1	1	1		
15	2	104200-11920	COCK	1	1	1	1	1	1		
16	2	127610-44900	PLUG(M3/6X1.5			1	1	1	1		
17	2	23414-220000	PACKING 22,ROUND	1	1	1	1	1	1		G
18	2	43400-500640	SEAL WASHER 3/6S			1	1	1	1		
19	1	124976-34850	CAP	1	1	2	2	2	2		
20	1	121470-44900	SENDER, TEMP.	1	1	1	1	1	1		
21	1	22117-120000	WASHER 12			6	6	6	6		
22	1	23414-160000	GASKET 16,ROUND	1	1	1	1	1	1		
23	1	23871-030000	PLUG PT3/8,SCREW			1	1				
24	1	26106-080252	BOLT M8X25 PLATED	8	8	8	8	8	8		
25	1	26106-080352	BOLT M8X35 PLATED	4	4	4	4	4	4		
26	1	26106-080702	BOLT M8X70 PLATED	2	2	2	2	2	2		
27	1	26106-080802	BOLT M8X80 PLATED	14	14	18	18	18	18		
28	1	26116-120852	BOLT M12X85 PLATED			6	6	6	6		
29	1	119100-01640	CASE ASSY, OIL SEAL	1	1	1	1	1	1		
31	2	124411-01780	SEAL HTC95,115,12	1	1	1	1	1	1		G
32	1	26106-080252	BOLT M8X25 PLATED	8	8	8	8	8	8		
33	1	119100-34800	GAUGE, OIL LEVER	1	1	1	1	1	1		
34	1	121520-34810	GUIDE, DIPSTICK	1	1	1	1	1	1		
35	1	124070-13300	ELBOW (PT3/8)					1	1		

Fig.5.CYLINDER HEAD & BONNET

Y00D4580
 3, 4TN100 (T) L-P (S)



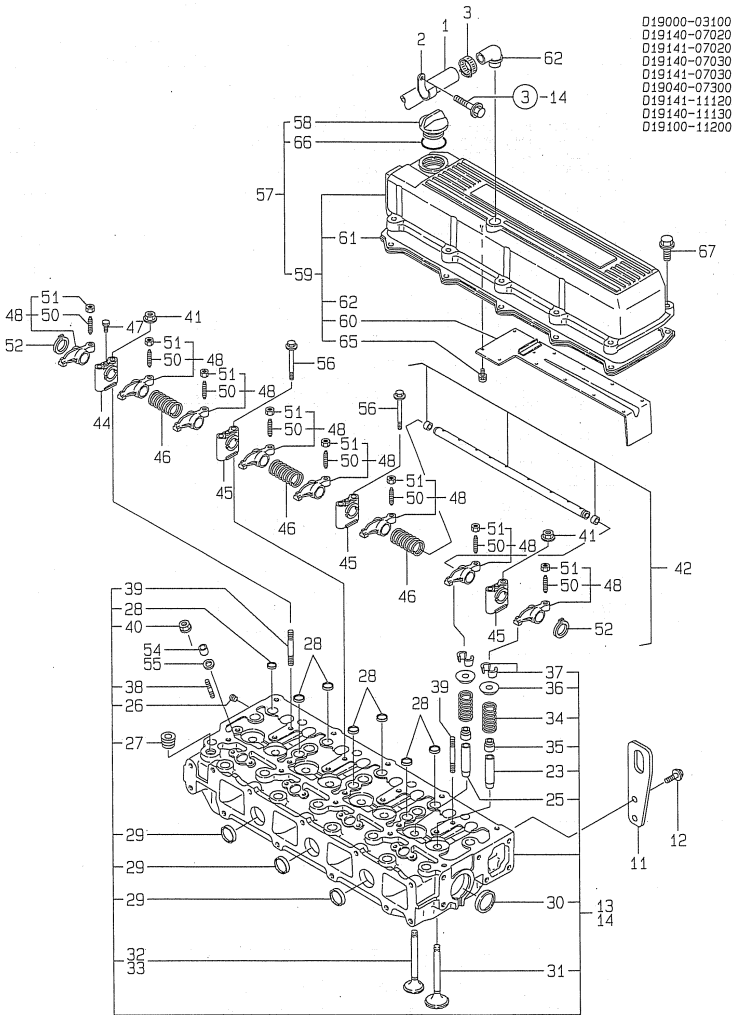
Remarks
 (1) REPAIR PART.
 (G) THESE PARTS ARE SOLD BY FIG.28,
 REF.NO.1,2.
 (H) THESE PARTS ARE SOLD BY FIG.29,
 REF.NO.1.

5.CYLINDER HEAD & BONNET

REF.	LEV.	PARTS NO.	DESCRIPTION	Q'TY						I	R
				(A)	(B)	(C)	(D)	(E)	(F)		
1	1	129150-03090	PIPE	1	1						
7	1	119000-07200	LIFTER	1	1						
8	1	26106-100202	BOLT M10X20 PLATED	2	2						
9	1	719000-11700	HEAD ASSY, CYLINDER	1	1						
13	2	121850-11800	GUIDE, VALVE(SUCTION	3	3						1
14	2	119000-11810	GUIDE, VALVE(EX-HAUST	3	3						1
15	2	123385-82200	PLUG	1	1						
16	2	23871-030000	PLUG PT3/8,SCREW	1	1						
17	2	27241-160000	PLUG 16	5	5						
18	2	27241-280000	PLUG 28	2	2						
19	2	27241-400000	PLUG 40	2	2						
20	2	121850-11100	VALVE, SUCTION	3	3						
21	2	119000-11110	VALVE, EXHAUST	3	3						
22	2	121850-11120	SPRING, VALVE	6	6						
23	2	121850-11150	SEAL, VALVE STEM	6	6						H
24	2	121850-11180	RETAINER, SPRING	6	6						
25	2	124250-11190	COTTER 9	6	6						
26	2	26216-060252	STUD M 6X 25 PLATED	6	6						
27	2	26216-080652	STUD M 8X 65 PLATED	2	2						
28	2	26366-060002	NUT M 6	6	6						
29	2	26366-080002	NUT M 8	2	2						
30	1	119000-11340	SHAFT ASSY, ROCKER	1	1						
31	2	719000-11650	ARM ASSY, ROCKER	6	6						
33	3	119000-11230	SCREW, VALVE	6	6						
34	3	129150-11750	NUT M8XP1.0	6	6						
36	2	119000-11260	BRACKET (A)	1	1						
37	2	119000-11270	BRACKET (B)	2	2						
38	2	119000-11280	SPRING	2	2						
39	2	119000-11290	BOLT, SET	1	1						
40	2	22242-000180	CIRCLIP 18	2	2						
42	1	119625-11870	PROTECTOR, NOZZLE	3	3						H
43	1	119625-11880	SEAT, NOZZLE	3	3						H
44	1	26106-080652	BOLT M 8X 65 PLATED	4	4						
45	1	124160-01751	COVER,FILLER	1	1						
46	1	24311-000320	O-RING 1A P-32.0	1	1						G
47	1	119000-11311	BONNET ASSY	1	1						
48	2	119000-03200	COVER,BREATHER CHMBR	1	1						
51	2	119000-11320	GASKET, BONNET	1	1						H
52	2	119100-11330	JOINT, BREATHER	1	1						
53	2	26022-060122	SCREW M 5X 12	7	7						
54	1	26106-080252	BOLT M 8X 25 PLATED	8	8						

Fig.6.CYLINDER HEAD & BONNET

Y00D4580
 3, 4TN100 (T) L-P (S)



Remarks
 (G) THESE PARTS ARE SOLD BY FIG.29,
 REF.NO.2,3.
 (H) THESE PARTS ARE SOLD BY FIG.28,
 REF.NO.2.
 (I) REPAIR PART.

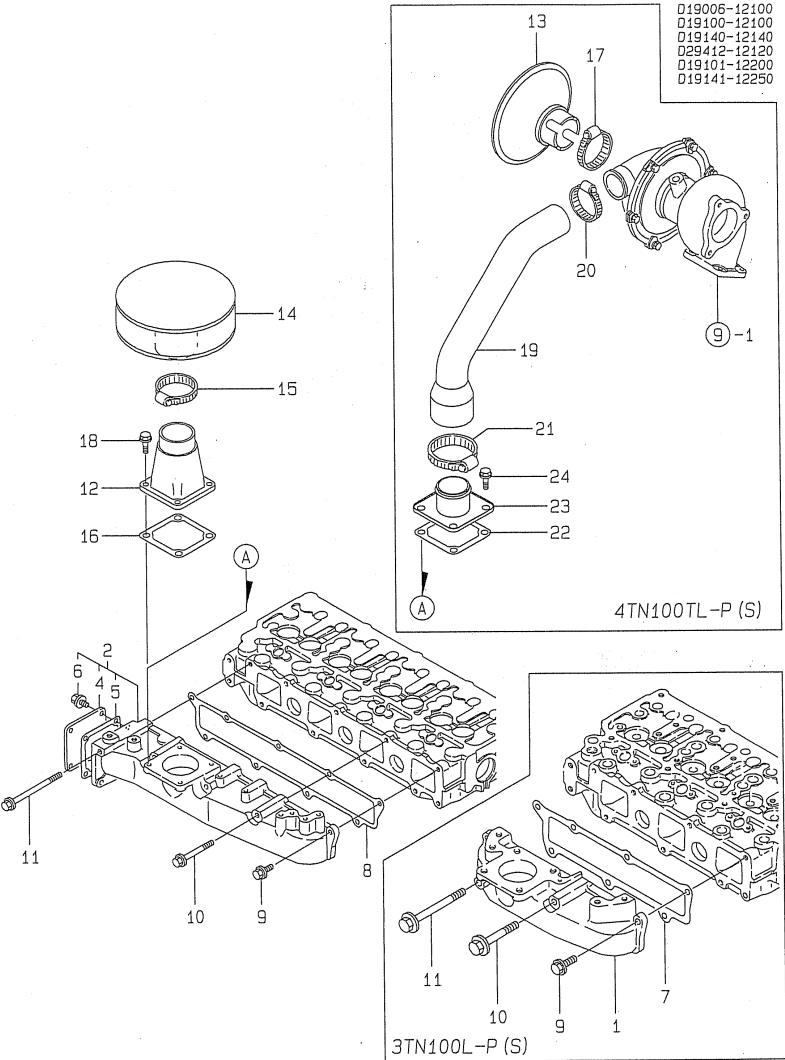
6.CYLINDER HEAD & BONNET

(A)=3TN100L-P
 (B)=3TN100L-PS
 (C)=4TN100L-P
 (D)=4TN100L-PS
 (E)=4TN100TL-P
 (F)=4TN100TL-PS

REF.	LEV.	PARTS NO.	DESCRIPTION	Q'TY						I	R
				(A)	(B)	(C)	(D)	(E)	(F)		
1	1	119006-03090	HOSE, BREATHER			1	1	1	1		
2	1	129150-03100	RETAINER			1	1	1	1		
3	1	23000-022000	CLAMP 22			1	1	1	1		
11	1	119000-07200	LIFTER			1	1	1	1		
12	1	26106-100202	BOLT M10X20 PLATED			2	2	2	2		
13	1	719129-11700	HEAD ASSY, CYLINDER			1	1				
14	1							1	1		
23	2	121850-11800	GUIDE, VALVE(SUCTION			4	4	4	4		1
25	2	119000-11810	GUIDE, VALVE(EX-HAUST			4	4	4	4		1
26	2	123385-82200	PLUG			1	1	1	1		
27	2	23871-030000	PLUG PT38,SCREW			1	1	1	1		
28	2	27241-160000	PLUG 16			7	7	7	7		
29	2	27241-280000	PLUG 28			3	3	3	3		
30	2	27241-400000	PLUG 40			2	2	2	2		
31	2	121850-11100	VALVE, SUCTION			4	4	4	4		
32	2	119000-11110	VALVE, EX-HAUST			4	4				
33	2	119101-11110	VALVE, EX-HAUST					4	4		
34	2	121850-11120	SPRING, VALVE			8	8	8	8		
35	2	121850-11150	SEAL, VALVE STEM			8	8	8	8		G
36	2	121850-11180	RETAINER, SPRING			8	8	8	8		
37	2	124250-11190	COTTER 9			8	8	8	8		
38	2	26216-060252	STUD M6X25 PLATED			8	8	8	8		
39	2	26216-080652	STUD M8X65 PLATED			2	2	2	2		
40	2	26366-060002	NUT M6			8	8	8	8		
41	2	26366-080002	NUT M8			2	2	2	2		
42	1	119100-11230	SHAFT ASSY, ARM			1	1	1	1		
44	2	119000-11260	BRACKET (A)			1	1	1	1		
45	2	119000-11270	BRACKET (B)			3	3	3	3		
46	2	119000-11280	SPRING			3	3	3	3		
47	2	119000-11290	BOLT, SET			1	1	1	1		
48	2	719129-11660	ARM ASSY, ROCKER			8	8	8	8		
50	3	119000-11230	SCREW, VALVE			8	8	8	8		
51	3	129150-11750	NUT M8XP1.0			8	8	8	8		
52	2	22242-000180	CIRCLIP 18			2	2	2	2		
54	1	119625-11870	PROTECTOR, NOZZLE			4	4	4	4		G
55	1	119625-11880	SEAT, NOZZLE			4	4	4	4		G
56	1	26106-080652	BOLT M8X65 PLATED			6	6	6	6		
57	1	119129-11520	BONNET ASSY			1	1	1	1		
58	2	124160-01751	COVER,FILLER			1	1	1	1		
59	2	119100-11311	BONNET ASSY,HEAD			1	1	1	1		
60	3	119100-03200	BAFFLE			1	1	1	1		
61	3	119100-11320	GASKET, BONNET			1	1	1	1		G
62	3	119100-11330	JOINT, BREATHER			1	1	1	1		
65	3	26022-050122	SCREW M5X12			11	11	11	11		
66	2	24311-000320	O-RING 1A P-32.0			1	1	1	1		H
67	1	26106-080252	BOLT M8X25 PLATED			10	10	10	10		

Fig.7.SUCTION MANIFOLD & AIR CLEANER

Y00D4580
3. 4TN100 (T) L-P (S)



Remarks
(G) THESE PARTS ARE SOLD BY FIG.29,
REF.NO.1,2,3.

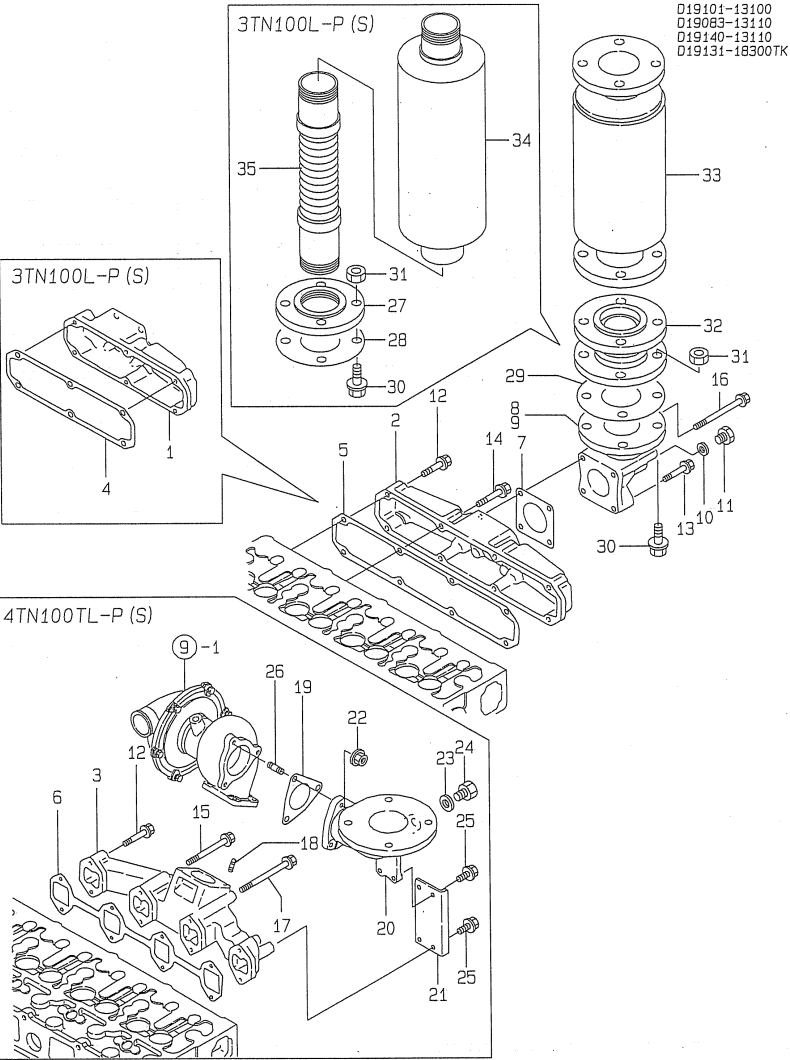
7.SUCTION MANIFOLD & AIR CLEANER

(A)=3TN100L-P
(B)=3TN100L-PS
(C)=4TN100L-P
(D)=4TN100L-PS
(E)=4TN100TL-P
(F)=4TN100TL-PS

REF.	LEV.	PARTS NO.	DESCRIPTION	Q'TY						I	R
				(A)	(B)	(C)	(D)	(E)	(F)		
1	1	119000-12100	MANIFOLD, SUCTION	1	1						
2	1	719129-12100	MANIFOLD ASSY, SUC.								
4	2	119100-12120	COVER, BLIND			1	1	1	1		
5	2	121850-77021	GASKET, (NON-ASB.)			1	1	1	1		
6	2	26106-080142	BOLT 8X 14 PLATED			4	4	4	4		
7	1	119000-12110	GASKET, SUC MANIFOLD	1	1						G
8	1	119100-12112	GASKET, (NON ASB.)			1	1	1	1		G
9	1	26106-080202	BOLT M 8X 20 PLATED	5	5	5	5	5	5		
10	1	26106-080702	BOLT M 8X 70 PLATED	1	1	3	3	3	3		
11	1	26106-081152	BOLT M 8X 115 PLATED	1	1	1	1	1	1		
12	1	119140-12130	STAY, SILENCER	1	1	1	1				
13	1	129412-12460	COVER, AIR SILENCER					1	1		
14	1	127412-18853	SILENCER, AIR INTAKE	1	1	1	1				
15	1	127488-18910	CLIP	1	1	1	1				
16	1	121850-77021	GASKET, (NON-ASB.)	1	1	1	1				G
17	1	23000-054000	CLAMP 54					1	1		
18	1	26106-080182	BOLT M 8X 18 PLATED	4	4	4	4				
19	1	119101-12850	HOSE, RUBBER					1	1		
20	1	23000-060000	CLAMP 60					1	1		
21	1	23000-070000	CLAMP 70					1	1		
22	1	121850-77021	GASKET, (NON-ASB.)					1	1		G
23	1	121850-77100	JOINT					1	1		
24	1	26106-080142	BOLT 8X 14 PLATED					4	4		

Fig.8.EXHAUST MANIFOLD & SILENCER

Y00D4580
3. 4TN100 (T) L-P (S)



Remarks

(G) THESE PARTS ARE SOLD BY FIG.29,
REF.NO.1,2,3.

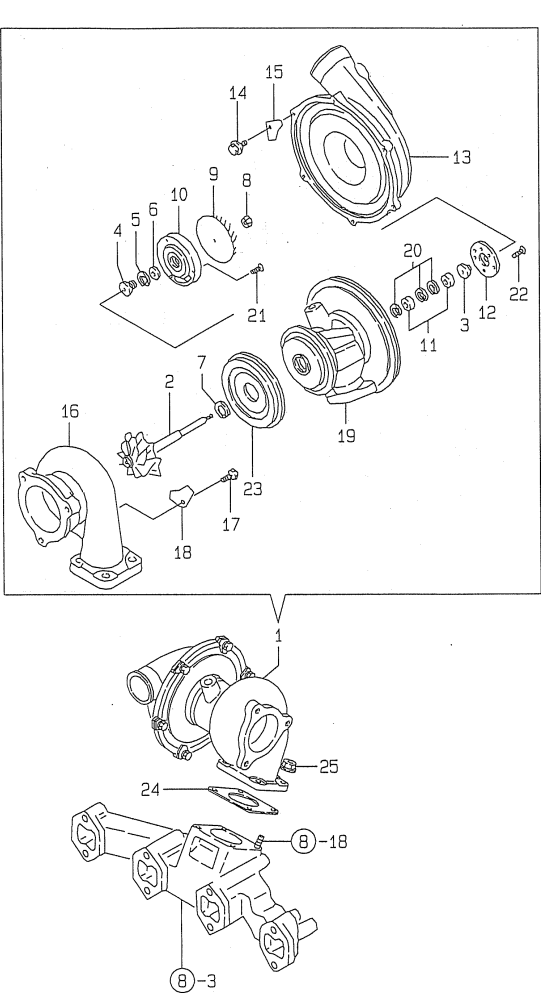
8.EXHAUST MANIFOLD & SILENCER

(A)=3TN100L-P
(B)=3TN100L-PS
(C)=4TN100L-P
(D)=4TN100L-PS
(E)=4TN100TL-P
(F)=4TN100TL-PS

REF.	LEV.	PARTS NO.	DESCRIPTION	Q'TY						I	R
				(A)	(B)	(C)	(D)	(E)	(F)		
1	1	119000-13100	MANIFOLD, EXHAUST	1	1						
2	1	119100-13100	MANIFOLD, EXHAUST			1	1				
3	1	119101-13100	MANIFOLD, EXHAUST					1	1		
4	1	119000-13200	GASKET, EXH-MANIFOLD	1	1						G
5	1	119100-13200	GASKET, EXH-MANIFOLD			1	1				G
6	1	119101-13200	GASKET, EXH-MANIFOLD					1	1		G
7	1	129400-13201	GASKET, (NON-ASB.)	1	1	1	1				G
8	1	119140-13300	BEND 65A EXHAUST			1	1				
9	1	129411-13300	BEND, EXHAUST	1	1						
10	1	23414-170000	GASKET 17, ROUND	1	1	1	1				
11	1	23894-030002	PLUG G3/8 HEX	1	1	1	1				
12	1	26106-080402	BOLT M8X40 PLATED	4	4	4	4	4	4		
13	1	26106-080452	BOLT M8X45 PLATED	2	2	2	2				
14	1	26106-080502	BOLT M8X50 PLATED	2	2	4	4				
15	1	26106-080702	BOLT M8X70 PLATED					3	3		
16	1	26106-080952	BOLT M8X95 PLATED	2	2	2	2				
17	1	26106-081102	BOLT M8X110 PLATED					1	1		
18	1	26216-080222	STUD M8X22 PLATED					4	4		
19	1	129792-13520	GASKET					1	1		G
20	1	119131-18390	BEND, EXHAUST					1	1		
21	1	119131-18400	STAY, BEND					1	1		
22	1	194990-22050	NUT VW WASHER 8					3	3		
23	1	23414-170000	GASKET 17, ROUND					1	1		
24	1	23894-030002	PLUG G3/8 HEX					1	1		
25	1	26106-080162	BOLT M8X16 PLATED					4	4		
26	1	26216-080222	STUD M8X22 PLATED					3	3		
27	1	23217-050000	FLANGE 50, ROUND	1	1						
28	1	23446-050000	GASKET 50	1	1						
29	1	23446-065000	GASKET 65			1	1	1	1		
30	1	26116-120502	BOLT M12X50	4	4	4	4	4	4		
31	1	26716-120002	NUT 12	4	4	4	4	4	4		
32	1	43100-500560	SEE 43100-551010			1	1	1	1		
33	1	43100-500900	SILENCER			1	1	1	1		
34	1	43100-552900	SILENCER	1	1						
35	1	43720-500120	PIPE	1	1						

Fig.9.TURBINE

Y00D4580
3, 4TN100 (T) L-P (S)



Remarks
(G) THESE PARTS ARE SOLD BY FIG.29,
REF.NO.3.

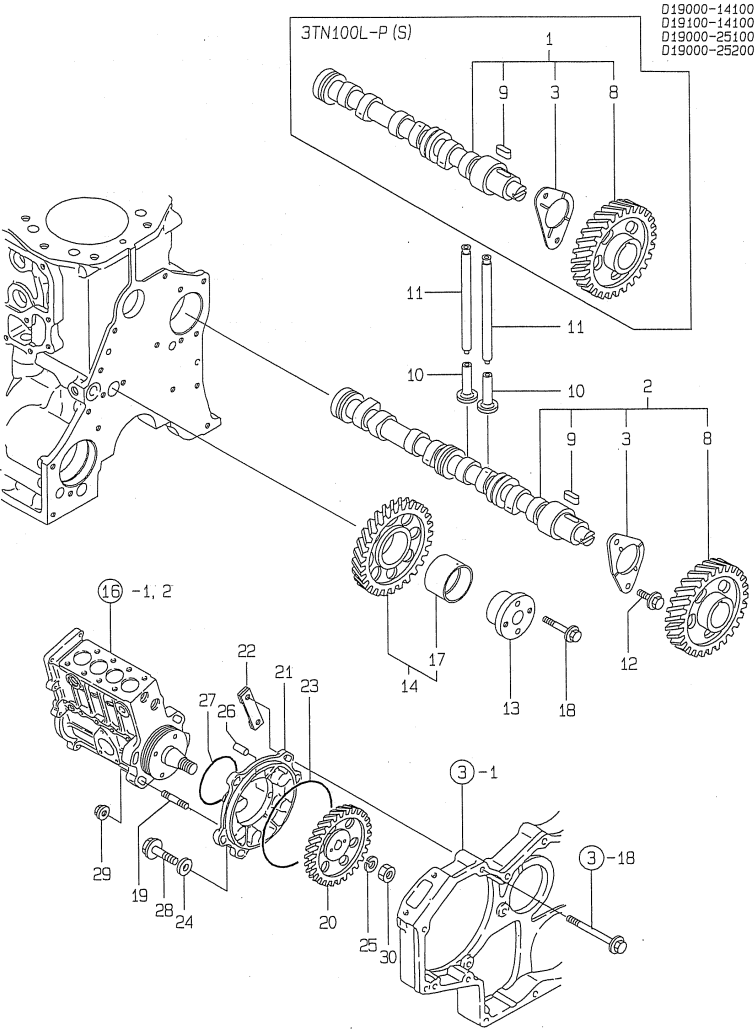
9.TURBINE

(A)=3TN100L-P
(B)=3TN100L-PS
(C)=4TN100L-P
(D)=4TN100L-PS
(E)=4TN100TL-P
(F)=4TN100TL-PS

REF.	LEV.	PARTS NO.	DESCRIPTION	Q'TY						I	R
				(A)	(B)	(C)	(D)	(E)	(F)		
1	1	119101-18020	TURBOCHARGER ASSY					1	1		
2	2	119101-18500	SHAFT, TURBINE					1	1		
3	2	129404-18510	BUSHING					1	1		
4	2	129404-18520	OIL THROWER					1	1		
5	2	129404-18530	SEAL RING, COMP.SIDE					1	1		
6	2	129404-18540	SEAL RING, COMP.SIDE					1	1		
7	2	129404-18550	SEAL RING, TURB.SIDE					1	1		
8	2	129404-18560	LOCK NUT					1	1		
9	2	119101-18510	WHEEL, BLOWER					1	1		
10	2	129404-18580	PLATE, SEAL					1	1		
11	2	129404-18590	BEARING, JOURNAL					2	2		
12	2	129404-18600	BEARING, THRUST					1	1		
13	2	119101-18520	HOUSING ASSY, BLOWER					1	1		
14	2	129403-18620	BOLT M5X 10.5					6	6		
15	2	119101-18530	RETAINER					6	6		
16	2	119101-18540	HOUSING, TURBINE					1	1		
17	2	119101-18550	BOLT M8					4	4		
18	2	119101-18560	RETAINER					4	4		
19	2	119101-18570	HOUSING, BEARING					1	1		
20	2	129404-18680	RING, RETAINING					3	3		
21	2	129406-18690	SCREW					4	4		
22	2	129406-18700	SCREW					3	3		
23	2	129404-18720	PROTECTOR, HEAT					1	1		
24	1	129472-18090	GASKET					1	1		G
25	1	194990-22050	NUT/WASHER 8					4	4		

Fig.10.CAMSHAFT & DRIVING GEAR

Y0004580
3. 4TN100 (T) L-P (S)



Remarks

(1) REPAIR PART.
(G) THESE PARTS ARE SOLD BY FIG.28,
REF.NO.1,2.

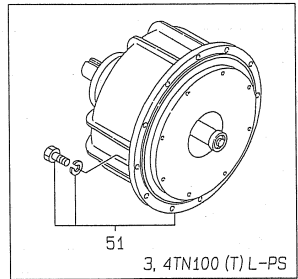
10.CAMSHAFT & DRIVING GEAR

(A)=3TN100L-P
(B)=3TN100L-PS
(C)=4TN100L-P
(D)=4TN100L-PS
(E)=4TN100TL-P
(F)=4TN100TL-PS

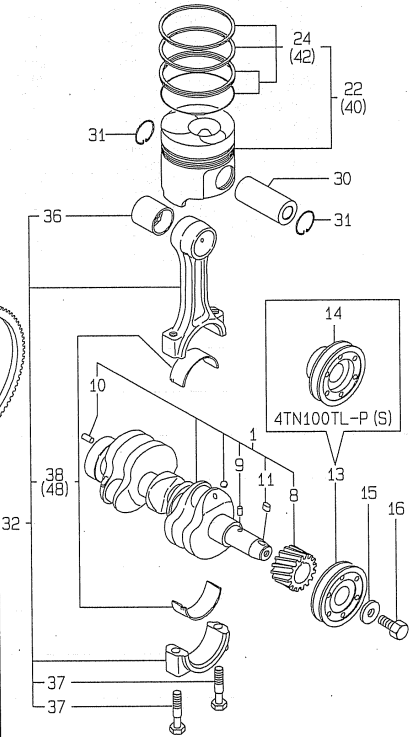
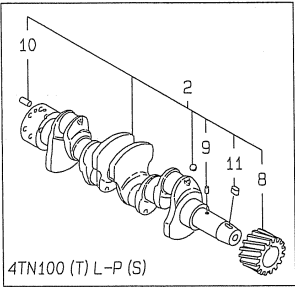
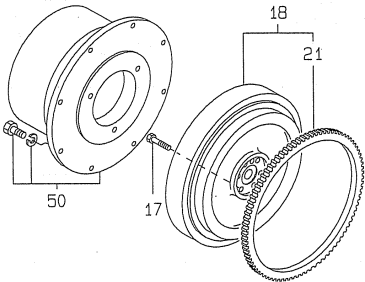
REF.	LEV.	PARTS NO.	DESCRIPTION	Q'TY						I	R
				(A)	(B)	(C)	(D)	(E)	(F)		
1	1	119000-14000	CAMSHAFT ASSY	1	1						
2	1	119100-14000	CAMSHAFT ASSY			1	1	1	1		
3	2	119000-02450	BEARING, THRUST	1	1	1	1	1	1		
8	2	119000-14100	GEAR, CAMSHAFT Z=48	1	1	1	1	1	1		
9	2	22512-070140	KEY 7X 14	1	1	1	1	1	1		
10	1	119000-14200	TAPPET	6	6	8	8	8	8		
11	1	129150-14400	ROD, PUSH	6	6	8	8	8	8		
12	1	26106-080162	BOLT M8X 16 PLATED	2	2	2	2	2	2		
13	1	119000-25050	SHAFT, IDLE GEAR	1	1	1	1	1	1		
14	1	119000-25100	GEAR ASSY, IDLE Z=51	1	1	1	1	1	1		
17	2	119000-25930	BUSH, IDLE GEAR	1	1	1	1	1	1		1
18	1	26013-080452	BOLT M8X45	2	2	2	2	2	2		
19	1	121850-01900	STUD M10X 32	4	4	4	4	4	4		
20	1	119000-25900	GEAR, FUEL INJ.PUMP	1	1	1	1	1	1		
21	1	119000-25910	MOUNT, FUEL INJ.PUMP	1	1	1	1	1	1		
22	1	119000-25920	RETAINER	1	1	1	1	1	1		
I 23	1	24341-001350	O-RING 1A S-135.0	1	1	1	1	1	1		G
24	1	106100-55800	WASHER	3	3	3	3	3	3		
25	1	22217-180000	SPRING WASHER 18	1	1	1	1	1	1		
26	1	22351-050012	PIN 5X12,SPRING	1	1	1	1	1	1		
I 27	1	124410-51960	O-RING	1	1	1	1	1	1		G
28	1	26106-080252	BOLT M8X25 PLATED	3	3	3	3	3	3		
29	1	26366-100002	NUT M10	4	4	4	4	4	4		
30	1	26776-180002	NUT M18,LOCK	1	1	1	1	1	1		

Fig.11.CRANKSHAFT & PISTON

Y0004580
3, 4TN100 (T) L-P (S)



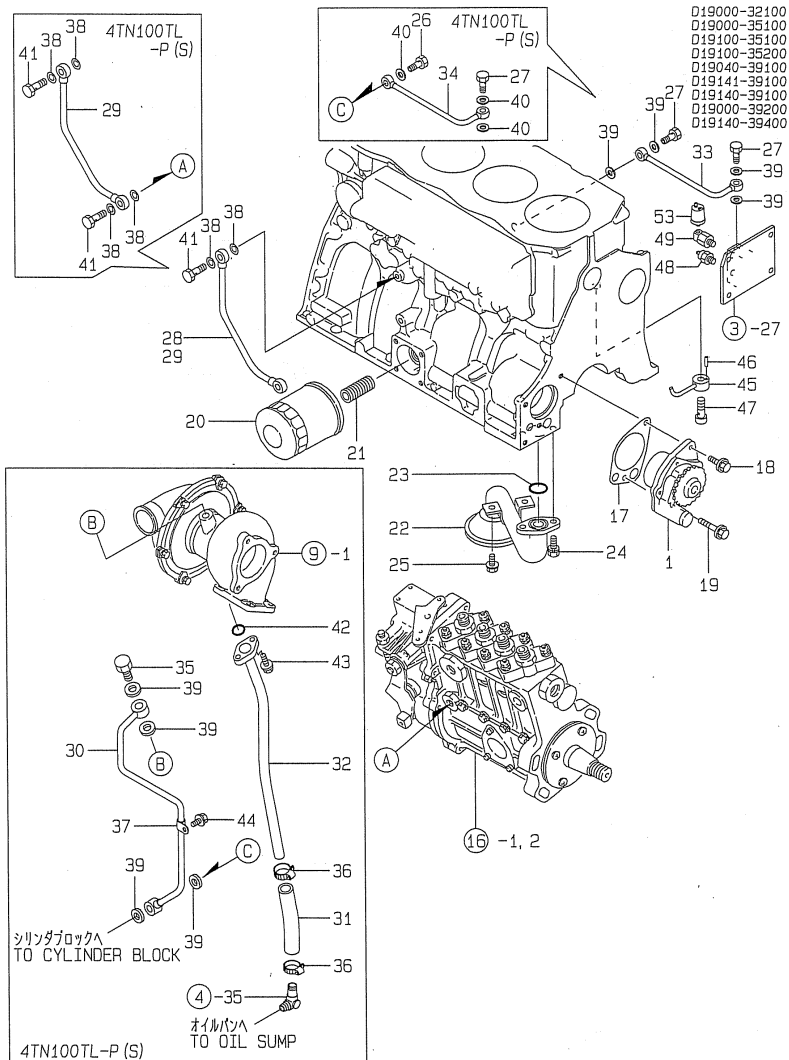
D19100-21100
D19141-21200
D19000-21150
D19000-22100
D19000-23100
D19000-21200
D19040-21300



Remarks
(1) REPAIR PART.
(2) OVER-SIZED(O.S=0.25)PART.
(3) UNDER-SIZED(U.S=0.25)PART.

(A)=3TN100L-P
(B)=3TN100L-PS
(C)=4TN100L-P
(D)=4TN100L-PS
(E)=4TN100TL-P
(F)=4TN100TL-PS

REF.	LEV.	PARTS NO.	DESCRIPTION	Q'TY						I	R
				(A)	(B)	(C)	(D)	(E)	(F)		
1	1	719000-21700	CRANKSHAFT ASSY	1	1						
2	1	719100-21700	CRANKSHAFT ASSY								
8	2	121850-21200	GEAR, CRANKSHAFT	1	1	1	1	1	1		
9	2	121850-21290	PARALLEL PIN	1	1	1	1	1	1		
10	2	121850-21920	PARALLEL PIN 10X22	1	1	1	1	1	1		
11	2	22512-070140	KEY 7X 14	1	1	1	1	1	1		
13	1	119000-21650	V-PULLEY, CRANKSHAFT	1	1	1	1				
14	1	119141-21650	V-PULLEY					1	1		
15	1	121850-21660	WASHER	1	1	1	1	1	1		
16	1	121850-21680	BOLT, V-PULLEY	1	1	1	1	1	1		
17	1	121850-21130	BOLT, FLYWHEEL	6	6	6	6	6	6		
18	1	171090-21601	FLYWHEEL ASSY	1	1	1	1	1	1		
21	2	127410-21480	RING GEAR Z=129	1	1	1	1	1	1		
22	1	119000-22000	PISTON WRINGS	3	3	4	4	4	4		
24	2	719000-22500	RING SET	3	3	4	4	4	4		
30	1	119000-22300	PIN, PISTON	3	3	4	4	4	4		
31	1	22252-000340	CIRCLIP 34	6	6	8	8	8	8		
32	1	719000-23100	ROD ASSY, CONNECTING	3	3	4	4	4	4		
36	2	119000-23910	BUSH, PISTON PIN	3	3	4	4	4	4		1
37	2	121850-23200	BOLT, ROD	6	6	8	8	8	8		
38	2	719000-23600	BEARING, CRANKPIN	3	3	4	4	4	4		
40	1	719000-22900	PISTON WRING OS=0.25	3	3	4	4	4	4		2
42	2	719000-22950	RING SET O.S=0.25	3	3	4	4	4	4		2
48	1	719000-23610	BEARING, PIN U.S=0.25	3	3	4	4	4	4		3
50	1	45100-501950	CLUTCH	1		1		1			
51	1	45100-502530	CLUTCH FAYH-93H		1		1		1		



(G) THESE PARTS ARE SOLD BY FIG.28,
REF.NO.1.2.

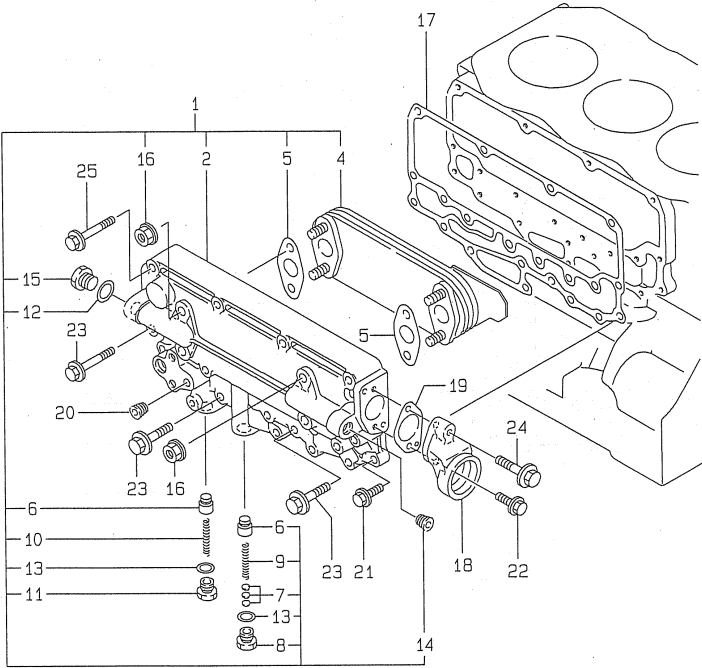
REF.	LEV.	PARTS NO.	DESCRIPTION	QTY						I	R	
				(A)	(B)	(C)	(D)	(E)	(F)			
I	1	1	119000-32001	PUMP ASSY, LUB.OIL	1	1	1	1	1	1		
	17	1	119000-32020	GASKET, LO,PUMP	1	1	1	1	1	1		G
	18	1	26106-080162	BOLT M8X 16 PLATED	1	1	1	1	1	1		
	19	1	26106-080502	BOLT M8X 50 PLATED	1	1	1	1	1	1		
	20	1	119005-35100	STRAINER 80X100,L.O.	1	1	1	1	1	1		
	21	1	119000-35140	STUD, LUB.OIL FILTER	1	1	1	1	1	1		
	22	1	119100-35090	PIPE, OIL INLET	1	1	1	1	1	1		
	23	1	24311-000220	O-RING 1A P-22.0	1	1	1	1	1	1		G
	24	1	26013-080162	BOLT VWASHER M8X16	2	2	2	2	2	2		
I	25	1	26106-080162	BOLT M8X 16 PLATED	2	2	2	2	2	2		
	26	1	119141-39150	BOLT M10X1.5,BALL JT					1	1		
	27	1	121252-39150	BOLT, PIPE JOINT	1	1	2	2	1	1		
	28	1	119000-39350	PIPE	1	1						
	29	1	119100-39350	PIPE, LO			1	1	1	1		
	30	1	119101-39600	PIPE, LO,INLET					1	1		
	31	1	129792-39610	JOINT, RUBBER					1	1		
	32	1	119101-39650	PIPE, LO,OUTLET					1	1		
	33	1	119140-39650	PIPE,LUB.OIL,SENSOR	1	1	1	1				
I	34	1	119141-39650	PIPE,LUB.OIL,SENSOR					1	1		
	35	1	124413-39710	BOLT M10					1	1		
	36	1	23000-025000	CLAMP 25					2	2		
	37	1	23297-080081	RETAINER 8X 8					1	1		
	38	1	23414-080000	GASKET 8,ROUND	2	2	2	2	4	4		G
	39	1	23414-100000	GASKET 10,ROUND	4	4	4	4	4	4		
I	40	1	23414-100000	GASKET 10,ROUND					3	3		
	41	1	23857-030000	JOINT BOLT 3	1	1	1	1	2	2		
	42	1	24314-000180	O-RING 4C P-18.0					1	1		
	43	1	26106-060162	BOLT M6X 16 PLATED					2	2		
	44	1	26106-080122	BOLT M8X 12 PLATED					1	1		
	45	1	119000-39650	NOZZLE, PISTON JET	3	3	4	4	4	4		
	46	1	22351-030010	SPRING PIN 3X10	3	3	4	4	4	4		
	47	1	23857-030000	JOINT BOLT 3	3	3	4	4	4	4		
	48	1	121250-39450	SENDER, OIL PRESSURE	1	1	1	1	1	1		
I	49	1	123482-39660	DAMPER	1	1	1	1	1	1		
	53	1	144626-91560	SENDER UNIT	1	1	1	1	1	1		

N:Old $\xrightarrow{\text{Yes}} \text{New}$, Q:Old $\xrightarrow{\text{No}} \text{New}$, R:Old $\xrightarrow{\text{Yes}} \text{New}$, S:Old $\xrightarrow{\text{No}} \text{New}$, W:Add, Z:Discontinued, F:Interchangeable by set, K:Q'ty Change
(C)Copy Rights YANMAR CO.,LTD.

Fig.13.OIL COOLER HOUSING

Y00D4580
3, 4TN100 (T) L-P (S)

D19140-33110



Remarks

(G) THESE PARTS ARE SOLD BY FIG.28,
REF.NO.1,2.

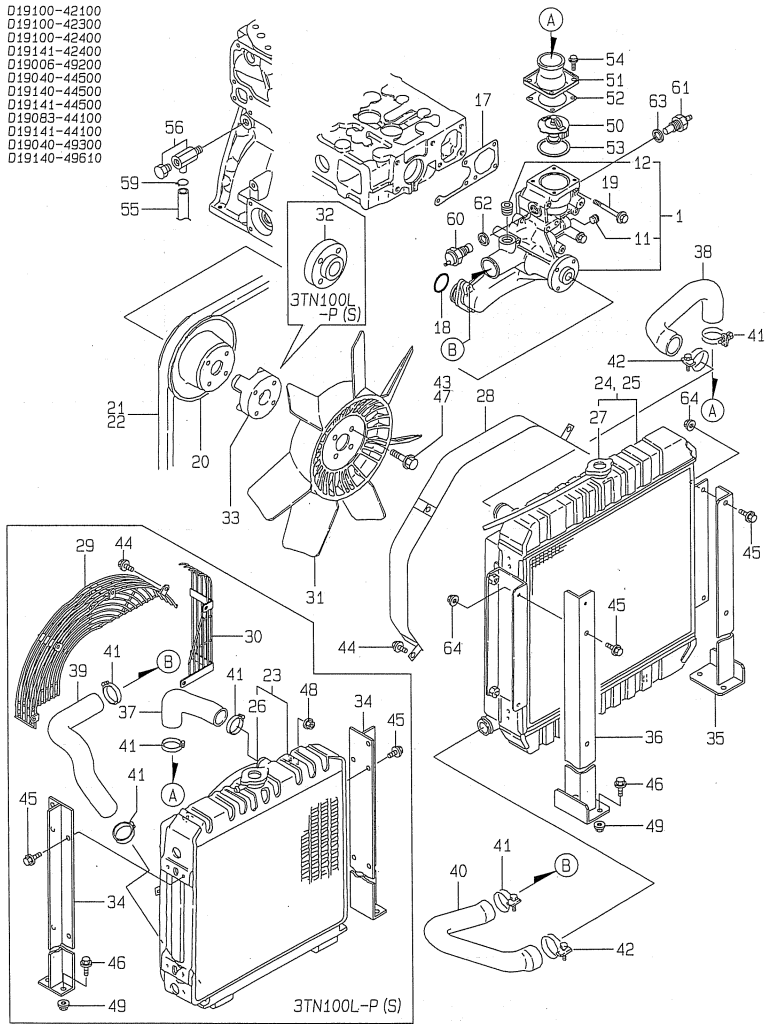
(A)=3TN100L-P
(B)=3TN100L-PS
(C)=4TN100L-P
(D)=4TN100L-PS
(E)=4TN100TL-P
(F)=4TN100TL-PS

REF.	LEV.	PARTS NO.	DESCRIPTION	Q'TY						I	R
				(A)	(B)	(C)	(D)	(E)	(F)		
1	1	719000-33700	COOLER ASSY, LUB.OIL	1	1	1	1	1	1		
1-1	1	119140-92600	SET,LO COOLER OMP			1	1	1	1	N	
(A=E2009.12) (B=E2009.12) (C=E2009.12) (D=E2009.12) (E=E2009.12) (F=E2009.12)											
2	2	119000-33010	CASE, OIL COOLER	1	1	1	1	1	1		
4	2	119000-33050	COOLER, OIL	1	1	1	1	1	1		
5	2	121952-33071	GASKET, (NON-ASB.)	2	2	2	2	2	2		G
6	2	119000-34030	VALVE, OIL PRESS	2	2	2	2	2	2		
7	2	121850-35230	SHIM (T=1.0)	5	5	5	5	5	5		
8	2	124223-35510	RETAINER	1	1	1	1	1	1		
9	2	124411-35520	SPRING	1	1	1	1	1	1		
10	2	121952-39830	SPRING	1	1	1	1	1	1		
11	2	123672-84530	RETAINER	1	1	1	1	1	1		
12	2	23414-160000	GASKET 16, ROUND	1	1	1	1	1	1		G
13	2	23414-180000	GASKET 18, ROUND	2	2	2	2	2	2		G
13-1	2	23414-170000	GASKET 17, ROUND			2	2	2	2	N	
(A=E2009.12) (B=E2009.12) (C=E2009.12) (D=E2009.12) (E=E2009.12) (F=E2009.12)											
14	2	23871-030000	PLUG PT3/8,SCREW	2	2	2	2	2	2		
15	2	23887-160002	PLUG 16,HEX.	1	1	1	1	1	1		
16	2	26376-100002	U-NUT M10	4	4	4	4	4	4		
17	1	119000-33021	GASKET, (NON-ASB.)	1	1	1	1	1	1		G
18	1	119000-33030	BEND	1	1	1	1	1	1		
19	1	119000-33041	GASKET,BEND(NON-ASB.	1	1	1	1	1	1		G
20	1	23871-010000	PLUG PT1/8,SCREW	1	1	1	1	1	1		
21	1	26106-080202	BOLT M 8X 20 PLATED	3	3	3	3	3	3		
22	1	26106-080202	BOLT M 8X 20 PLATED	1	1	1	1	1	1		
23	1	26106-080352	BOLT M 8X 35 PLATED	8	8	8	8	8	8		
24	1	26106-080352	BOLT M 8X 35 PLATED	1	1	1	1	1	1		
25	1	26106-080502	BOLT M 8X 50 PLATED	10	10	10	10	10	10		

Fig.14.COOLING WATER SYSTEM

Y00D4580
3, 4TN100 (T) L-P (S)

D19100~42100
D19100~42300
D19100~42400
D19141~42400
D19006~49200
D19040~44500
D19140~44500
D19141~44500
D19083~44100
D19141~44100
D19040~49300
D19140~49610



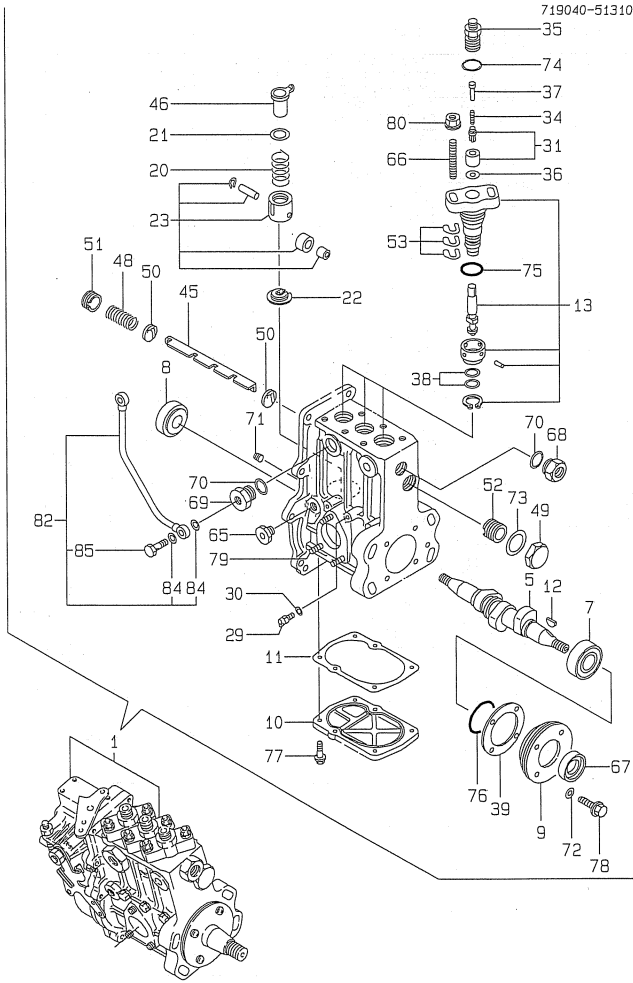
Remarks
(G) THESE PARTS ARE SOLD BY FIG.29,
REF.NO.1,2,3.
(H) THESE PARTS ARE SOLD BY FIG.28,
REF.NO.1,2.

(A)=3TN100L-P
(B)=3TN100L-PS
(C)=4TN100L-P
(D)=4TN100L-PS
(E)=4TN100TL-P
(F)=4TN100TL-PS

REF.	LEV.	PARTS NO.	DESCRIPTION	Q'TY						I	R
				(A)	(B)	(C)	(D)	(E)	(F)		
1	1	119006-42001	PUMP ASSY, C.WATER	1	1	1	1	1	1		
11	2	23871-020000	PLUG PT1/4,SCREW	1	1	1	1	1	1		
12	2	23871-030000	PLUG PT3/8,SCREW	1	1	1	1	1	1		
17	1	119000-42021	GASKET, (NON-ASB.)	1	1	1	1	1	1		H
18	1	24311-000360	O-RING 1A P-36.0	1	1	1	1	1	1		H
19	1	26106-080652	BOLT M 8X 65 PLATED	5	5	5	5	5	5		
20	1	119000-42250	PULLEY, C.W.PUMP	1	1	1	1	1	1		
21	1	171087-42280	V-BELT	1	1	1	1				
22	1	129052-96150	V-BELT					1	1		
23	1	119083-44500	RADIATOR	1	1						
24	1	119140-44500	RADIATOR			1	1				
25	1	119141-44500	RADIATOR					1	1		
26	2	121850-44660	CAP	1	1						
27	2	119259-44570	CAP, RADIATOR			1	1	1	1		
28	1	119140-44560	PROTECTOR, FAN			1	1	1	1		
29	1	119083-44570	WIRE NET (A)	1	1						
30	1	119083-44580	WIRE NET (B)	1	1						
31	1	121972-44740	FAN	1	1	1	1	1	1		
32	1	119130-44760	SPACER, FAN	1	1						
33	1	119141-44760	SPACER, FAN			1	1	1	1		
34	1	119040-44900	BRACKET, RADIATOR	2	2						
35	1	119140-44900	MOUNT R,RADIATOR			1	1	1	1		
36	1	119140-44910	MOUNT L,RADIATOR			1	1	1	1		
37	1	119040-49010	PIPE (A), C. WATER	1	1						
38	1	119140-49010	PIPE (A), C. WATER			1	1	1	1		
39	1	119130-49020	PIPE (B), C. WATER	1	1						
40	1	119140-49020	PIPE (B), C. WATER			1	1	1	1		
41	1	23000-048000	CLAMP 48	4	4	2	2	2	2		
42	1	23000-054000	CLAMP 54			2	2	2	2		
43	1	26014-080352	BOLT M 8X 35	4	4						
44	1	26106-080142	BOLT 8X 14 PLATED	6	6	4	4	4	4		
45	1	26106-080182	BOLT M 8X 18 PLATED	8	8	8	8	8	8		
46	1	26106-080302	BOLT M 8X 30 PLATED	4	4	4	4	4	4		
47	1	26106-080652	BOLT M 8X 55 PLATED			4	4	4	4		
48	1	26366-080002	NUT M 8	6	6						
49	1	26366-080002	NUT M 8	4	4	4	4	4	4		
50	1	119000-48170	THERMOSTAT 71 C	1	1	1	1	1	1		
51	1	121850-49530	COVER, THERMOSTAT	1	1	1	1	1	1		
52	1	121850-49540	GASKET, THERMOSTAT	1	1	1	1	1	1		G
53	1	121850-49550	GASKET, THERMOSTAT	1	1	1	1	1	1		G
54	1	26014-060142	BOLT M 6X 14	4	4	4	4	4	4		
55	1	124738-49150	PIPE, WATER DRAIN	1	1	1	1	1	1		
56	1	119620-49290	COCK ASSY 1/4	1	1	1	1	1	1		
59	1	124766-59050	CLAMP 12	1	1	1	1	1	1		
60	1	121250-44901	SWITCH, THERMO(110 C	1	1	1	1	1	1		
61	1	121470-44900	SENDER, TEMP.	1	1	1	1	1	1		
62	1	124465-44950	GASKET 16	1	1	1	1	1	1		H
63	1	23414-160000	GASKET 16, ROUND	1	1	1	1	1	1		H
64	1	26366-080002	NUT M 8			4	4	4	4		

Fig.15.FUEL INJECTION PUMP

Y00D4580
 3, 4TN100 (T) L-P (S)



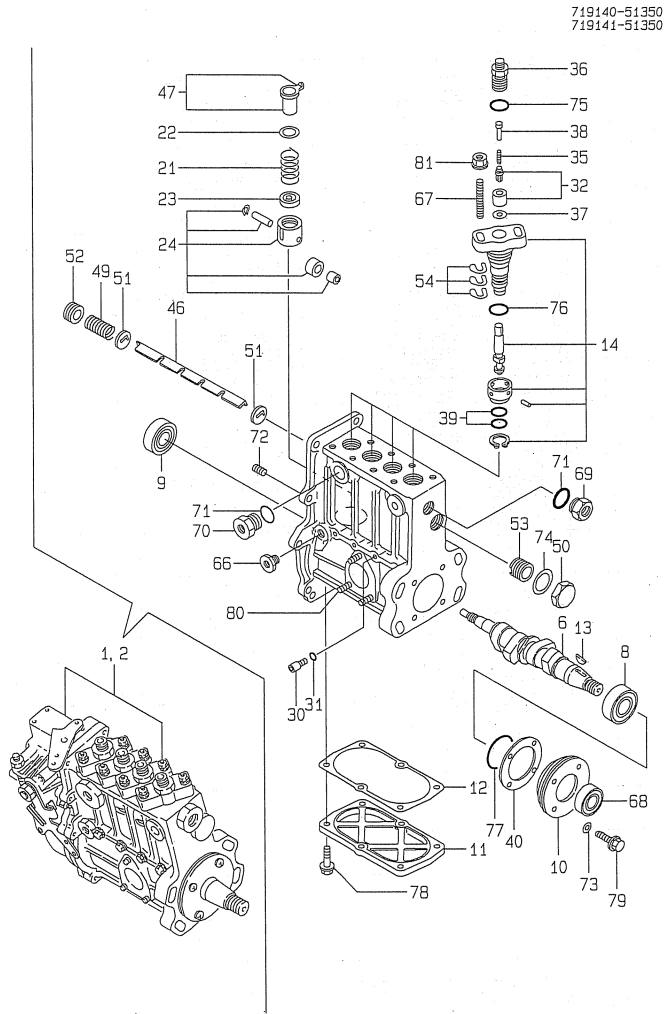
Remarks
 (1) FEED PUMP ASSY(FIG.NO.17)AND
 GOVERNOR ASSY(FIG.NO.18)IS INCOR-
 PORATED IN THIS FUEL INJECTION
 PUMP ASSY(REF.NO.1).

(A)=3TN100L-P
 (B)=3TN100L-PS
 (C)=4TN100L-P
 (D)=4TN100L-PS
 (E)=4TN100TL-P
 (F)=4TN100TL-PS

REF.	LEV.	PARTS NO.	DESCRIPTION	Q'TY						I	R
				(A)	(B)	(C)	(D)	(E)	(F)		
1	1	719040-51310	PUMP W/GOV.&F.PUMP	1	1						1
5	2	119000-51030	CAMSHAFT, FUEL PUMP	1	1						
7	2	119000-51050	BEARING	1	1						
8	2	122710-51050	BEARING, ROLLER	1	1						
9	2	119000-51060	SUPPORT, BEARING	1	1						
10	2	119000-51081	COVER, FUEL PUMP BTM	1	1						
11	2	119000-51091	GASKET, SIDE COVER	1	1						
12	2	144626-51090	KEY 5X19	1	1						
13	2	119100-51101	PLUNGER W/BARREL	3	3						
20	2	119000-51161	SPRING	3	3						
21	2	119000-51170	SEAT A, PLNGR.SPRING	3	3						
22	2	119000-51181	SEAT B, PLNGR.SPRING	3	3						
23	2	119000-51201	TAPPET ASSY	3	3						
29	2	129155-51270	LOCKING, TAPPET	3	3						
30	2	129155-51280	O-RING S6	3	3						
31	2	128400-51300	VALVE W/SEAT, DELIV	3	3						
34	2	119000-51330	SPRING, DELIVERY VLV.	3	3						
35	2	119000-51340	HOLDER, DELIVERY VLV.	3	3						
36	2	122710-51350	GASKET, DELIVERY	3	3						
37	2	119000-51360	STOPPER, DELIVERY	3	3						
38	2	119000-51410	O-RING S18	6	6						
39	2	119000-51450	SHIM SET, CAMSHAFT	1	1						
45	2	119000-51500	RACK, CONTROL	1	1						
46	2	119000-51510	SLEEVE, CONTROL	3	3						
48	2	119000-51530	SPRING, RACK AUX.	1	1						
49	2	119000-51550	COVER, RACK	1	1						
50	2	119000-51570	GUIDE, RACK	2	2						
51	2	119000-51580	SCREW A, GUIDE CAP	1	1						
52	2	119000-51590	SCREW B, GUIDE CAP	1	1						
53	2	119000-51650	SHIM SET, ADJUSTING	6	6						
65	2	121850-51700	BUSHING, OIL FEED	1	1						
66	2	119000-51800	BOLT, BARREL MOUNTING	6	6						
67	2	119000-51900	OIL SEAL AC1290E0	1	1						
68	2	121952-51900	ADAPTER	1	1						
69	2	144626-51940	PLUG	1	1						
70	2	144626-51950	O-RING 1016	2	2						
71	2	137600-53900	SCREW M6X6	1	1						
72	2	22190-060000	SEAL WASHER 6(BOLT)	4	4						
73	2	23414-220029	GASKET 22	1	1						
74	2	24312-000150	O-RING 2P-15.0	3	3						
75	2	24341-000260	O-RING 1A S-26.0	3	3						
76	2	24341-000500	O-RING 1A S-50.0	1	1						
77	2	26106-060182	BOLT M6X18 PLATED	6	6						
78	2	26106-060202	BOLT M6X20 PLATED	4	4						
79	2	26216-060162	STUD M6X16 PLATED	3	3						
80	2	26366-080002	NUT M8	6	6						
82	2	119000-51990	PIPE	1	1						
84	2	23414-080000	GASKET 8, ROUND	2	2						
85	2	23857-030000	JOINT BOLT 3	1	1						

Fig.16.FUEL OIL INJECTION PUMP

Y0004580
3. 4TN100 (T) L-P (S)



Remarks
(1) FEED PUMP ASSY(FIG.NO.17)AND
GOVERNOR ASSY(FIG.NO.18)IS INCOR-
PORATED IN THIS FUEL INJECTION
PUMP ASSY(REF.NO.1,2).

16.FUEL OIL INJECTION PUMP

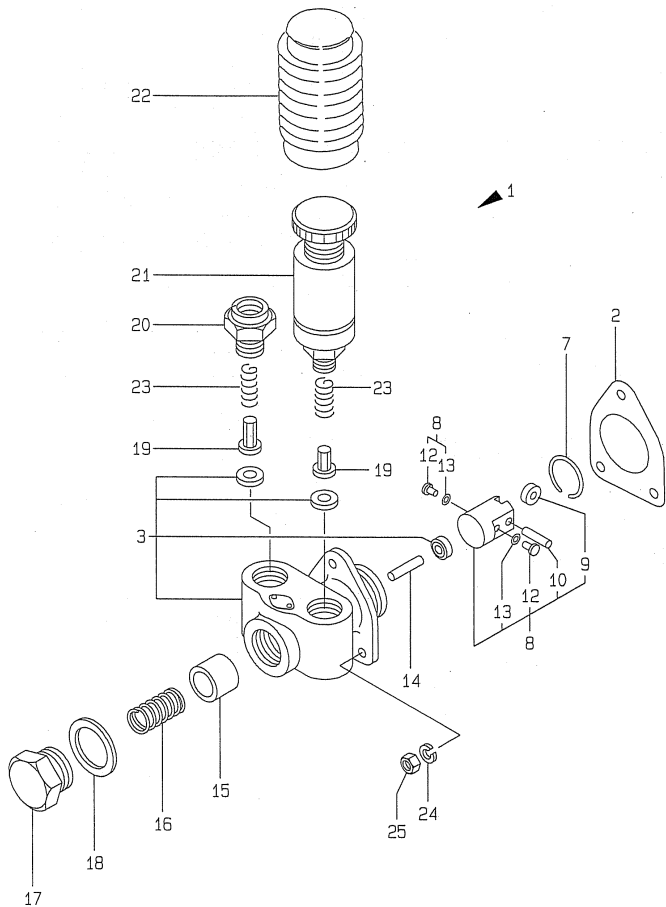
(A)=3TN100L-P
(B)=3TN100L-PS
(C)=4TN100L-P
(D)=4TN100L-PS
(E)=4TN100TL-P
(F)=4TN100TL-PS

REF.	LEV.	PARTS NO.	DESCRIPTION	Q'TY						I	R
				(A)	(B)	(C)	(D)	(E)	(F)		
1	1	719140-51350	FUEL INJECTION PUMP			1	1				1
2	1	719141-51350	PUMP W/GOV. & F.PUMP					1	1		1
6	2	119100-51030	CAMSHAFT, F.I.PUMP			1	1	1	1		
8	2	119000-51050	BEARING			1	1	1	1		
9	2	122710-51050	BEARING, ROLLER			1	1	1	1		
10	2	119000-51060	SUPPORT, BEARING			1	1	1	1		
11	2	119100-51081	COVER			1	1	1	1		
12	2	119100-51091	GASKET, LOWER COVER			1	1	1	1		
13	2	144626-51090	KEY 5X19			1	1	1	1		
14	2	119100-51101	PLUNGER W/BARREL			4	4	4	4		
21	2	119000-51161	SPRING			4	4	4	4		
22	2	119000-51170	SEAT A, PLNGR.SPRING			4	4	4	4		
23	2	119000-51181	SEAT B, PLNGR.SPRING			4	4	4	4		
24	2	119000-51201	TAPPET ASSY			4	4	4	4		
30	2	129155-51270	LOCKING, TAPPET			4	4	4	4		
31	2	129155-51280	O-RING S6			4	4	4	4		
32	2	128400-51300	VALVE W/SEAT, DELIV			4	4	4	4		
35	2	119000-51330	SPRING, DELIVERY VLV.			4	4	4	4		
36	2	119000-51340	HOLDER, DELIVERY VLV.			4	4	4	4		
37	2	122710-51350	GASKET, DELIVERY			4	4	4	4		
38	2	119000-51360	STOPPER, DELIVERY			4	4	4	4		
39	2	119000-51410	O-RING S18			8	8	8	8		
40	2	119000-51450	SHIM SET, CAMSHAFT			1	1	1	1		
46	2	119100-51500	RACK			1	1	1	1		
47	2	119000-51510	SLEEVE, CONTROL			4	4	4	4		
49	2	119000-51530	SPRING, RACK AUX.			1	1	1	1		
50	2	119000-51550	COVER, RACK			1	1	1	1		
51	2	119000-51570	GUIDE, RACK			2	2	2	2		
52	2	119000-51580	SCREW A, GUIDE CAP			1	1	1	1		
53	2	119000-51590	SCREW B, GUIDE CAP			1	1	1	1		
54	2	119000-51650	SHIM SET, ADJUSTING			8	8	8	8		
66	2	121850-51700	BUSHING, OIL FEED			1	1	1	1		
67	2	119000-51800	BOLT, BARREL MOUNTING			8	8	8	8		
68	2	119000-51900	OIL SEAL AC1290E0			1	1	1	1		
69	2	121952-51900	ADAPTER			1	1	1	1		
70	2	144626-51940	PLUG			1	1	1	1		
71	2	144626-51950	O-RING 1016			2	2	2	2		
72	2	137600-53900	SCREW M6X 6			1	1	1	1		
73	2	22190-060000	SEAL W/ASHER 6(BOLT)			4	4	4	4		
74	2	23414-220029	GASKET 22			1	1	1	1		
75	2	24312-000150	O-RING 2P-15.0			4	4	4	4		
76	2	24341-000260	O-RING 1A S-26.0			4	4	4	4		
77	2	24341-000500	O-RING 1A S-50.0			1	1	1	1		
78	2	26106-060182	BOLT M6X 18 PLATED			6	6	6	6		
79	2	26106-060202	BOLT M6X 20 PLATED			4	4	4	4		
80	2	26216-060162	STUD M6X 16 PLATED			3	3	3	3		
81	2	26366-080002	NUT M 8			8	8	8	8		

Fig.17.FEED PUMP

Y00D4580
3, 4TN100 (T) L-P (S)

719040-51310
719140-51350
719141-51350



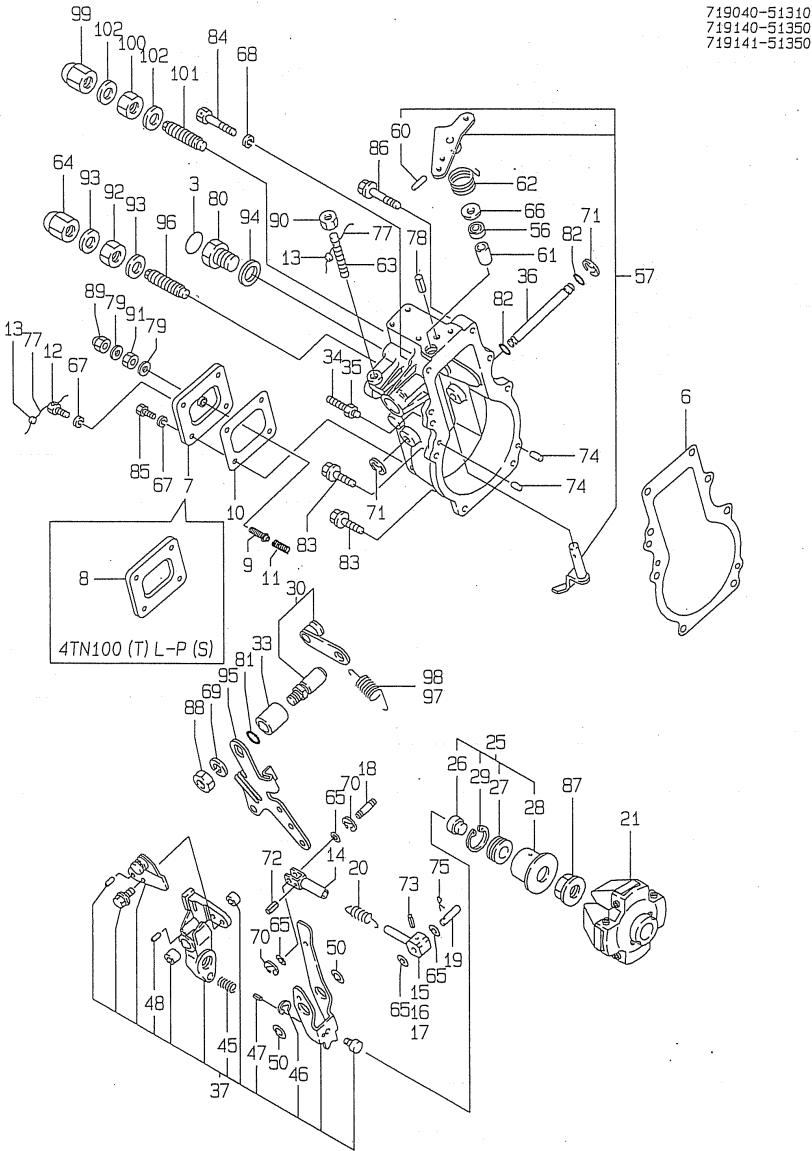
Remarks
(G) THESE PARTS ARE SOLD BY FIG.28,
REF.NO.1,2.

(A)=3TN100L-P
(B)=3TN100L-PS
(C)=4TN100L-P
(D)=4TN100L-PS
(E)=4TN100TL-P
(F)=4TN100TL-PS

REF.	LEV.	PARTS NO.	DESCRIPTION	Q'TY						I	R
				(A)	(B)	(C)	(D)	(E)	(F)		
1	1	119000-52000	PUMP ASSY, FUEL FEED	1	1	1	1	1	1		
2	2	124410-51861	GASKET, (NON-ASB)	1	1	1	1	1	1		G
3	2	121820-52020	HOUSING ASSY, FEED P	1	1	1	1	1	1		
7	2	121820-52070	PIN, SNAP	1	1	1	1	1	1		
8	2	119000-52100	TAPPET ASSY	1	1	1	1	1	1		
9	3	121820-52110	ROLLER	1	1	1	1	1	1		
10	3	148688-52120	ROLLER PIN	1	1	1	1	1	1		
12	3	121820-52140	LOCKING, ROLLER PIN	2	2	2	2	2	2		
13	3	119000-52150	SHIM	2	2	2	2	2	2		
14	2	121820-52160	SPINDLE, INTER	1	1	1	1	1	1		
15	2	121820-52170	PISTON	1	1	1	1	1	1		
16	2	121820-52180	SPRING, PISTON	1	1	1	1	1	1		
17	2	121820-52190	PLUG	1	1	1	1	1	1		
18	2	121820-52200	GASKET	1	1	1	1	1	1		
19	2	121820-52210	VALVE	2	2	2	2	2	2		
20	2	121820-52230	ADAPTER	1	1	1	1	1	1		
21	2	121820-52300	PUMP, PRIMING	1	1	1	1	1	1		
22	2	121820-52400	COVER	1	1	1	1	1	1		
23	2	121820-52510	SPRING, VALVE	2	2	2	2	2	2		
24	2	22217-060000	SPRING WASHER 6	3	3	3	3	3	3		
25	2	26716-060002	NUT 6	3	3	3	3	3	3		

Fig.18.GONERNOR

Y00D4580
 3, 4TN100 (T) L-P (S)



719040-51310
 719140-51350
 719141-51350

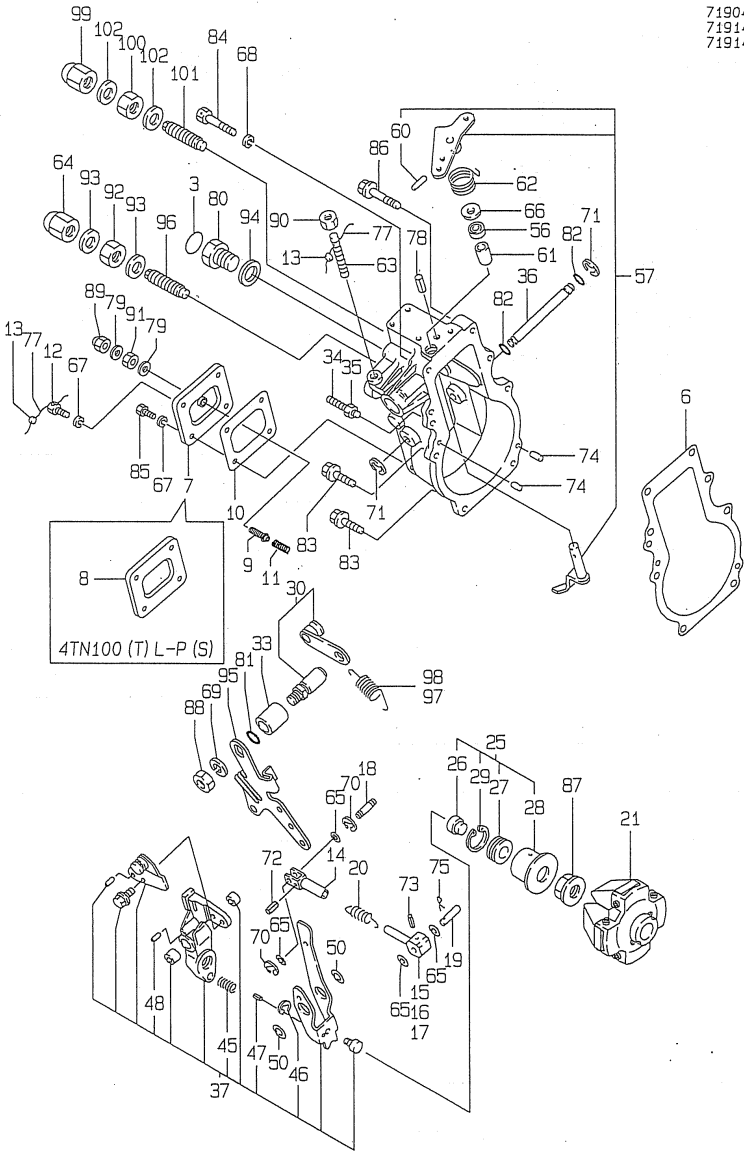
(A)=3TN100L-P
 (B)=3TN100L-PS
 (C)=4TN100L-P
 (D)=4TN100L-PS
 (E)=4TN100TL-P
 (F)=4TN100TL-PS

REF.	LEV.	PARTS NO.	DESCRIPTION	Q'TY						I	R
				(A)	(B)	(C)	(D)	(E)	(F)		
3	2	124610-51970	LABEL	1	1	1	1	1	1		
6	2	119000-61051	GASKET, (NON-ASB)	1	1	1	1	1	1		
7	2	119141-61060	COVER, REAR	1	1						
8	2	120323-61060	COVER, REAR			1	1	1	1		
9	2	119141-61070	SET BOLT	1	1						
10	2	120323-61070	GASKET	1	1	1	1	1	1		
11	2	119141-61080	SPRING	1	1						
12	2	129155-61090	BOLT, GOV. CASE COVER	1	1	1	1	1	1		
13	2	135210-61090	LEAD	2	2	2	2	2	2		
14	2	119000-61120	LINK	1	1	1	1	1	1		
15	2	119000-61140	LINK(MARK-1) L=40	1	1	1	1	1	1		
16	2	119000-61150	LINK(MARK-2) L=42	1	1	1	1	1	1		
17	2	119000-61160	LINK(MARK-3) L=44	1	1	1	1	1	1		
18	2	119000-61170	PIN, LINK	1	1	1	1	1	1		
19	2	119000-61180	PIN, LINK	1	1	1	1	1	1		
20	2	119000-61190	SPRING	1	1	1	1	1	1		
21	2	119100-61200	WEIGHT ASSY, GOV	1	1	1	1	1	1		
25	2	119100-61300	SLEEVE ASSY	1	1	1	1	1	1		
26	3	119000-61310	SHIFTER A	1	1	1	1	1	1		
27	3	119000-61320	BEARING, THRUST BALL	1	1	1	1	1	1		
28	3	119100-61340	SLEEVE	1	1	1	1	1	1		
29	3	22262-000260	CIRCLIP 26	1	1	1	1	1	1		
30	2	119000-61400	SHAFT ASSY, CNT. LEVER	1	1	1	1	1	1		
33	2	119100-61430	BUSH, LEVER SHAFT	1	1	1	1	1	1		
34	2	129155-61460	BOLT, IDLE LIMIT	1	1	1	1	1	1		
35	2	119000-61470	NUT	1	1	1	1	1	1		
36	2	119000-61490	SHAFT, GOV. LEVER	1	1	1	1	1	1		
37	2	119141-61500	LEVER ASSY, GOVERNOR	1	1	1	1	1	1		
45	3	121850-61600	SPRING, FUEL CONTROL	1	1	1	1	1	1		
46	3	22272-000040	CIRCLIP E-4	1	1	1	1	1	1		
47	3	22351-020004	SPRING PIN 2X4	1	1	1	1	1	1		
48	3	22351-020012	SPRING PIN 2X12	1	1	1	1	1	1		
50	2	119000-61630	SHIM PACK	1	1	1	1	1	1		
56	2	148616-61650	OIL SEAL VC081404	1	1	1	1	1	1		
57	2	119100-61771	LEVER ASSY, STOP	1	1	1	1	1	1		
60	3	22351-030016	SPRING PIN 3X16	1	1	1	1	1	1		
61	2	119000-61841	BUSH, STOP LEVER	1	1	1	1	1	1		
62	2	119100-61860	SPRING, RETURN	1	1	1	1	1	1		
63	2	121855-61910	BOLT, CONTROL	1	1	1	1	1	1		
64	2	129100-61930	NUT, CAP	1	1	1	1	1	1		
65	2	22117-050000	WASHER 5	4	4	4	4	4	4		
66	2	22137-080000	WASHER 8, POLISHED	1	1	1	1	1	1		
67	2	22217-050000	SPRING WASHER 5	4	4	4	4	4	4		
68	2	22217-060000	SPRING WASHER 6	1	1	1	1	1	1		
69	2	22217-100000	SPRING WASHER 10	1	1	1	1	1	1		
70	2	22272-000040	CIRCLIP E-4	2	2	2	2	2	2		
71	2	22272-000080	CIRCLIP E-8	2	2	2	2	2	2		
72	2	22351-030016	SPRING PIN 3X16	1	1	1	1	1	1		
73	2	22351-030025	SPRING PIN 3X25	1	1	1	1	1	1		
74	2	22351-050020	SPRING PIN 5X20	2	2	2	2	2	2		
75	2	22372-050000	SNAP PIN JASO 5	1	1	1	1	1	1		

N:Old New, Q:Old New, R:Old New, S:Old New, W:Add, Z:Discontinued, F:Interchangeable by set, K:Q'ty Change
 ++ CONTINUE ++
 (C)Copy Rights YANMAR CO.,LTD.

Fig.18.GONERNOR

Y00D4580
3, 4TN100 (T) L-P (S)

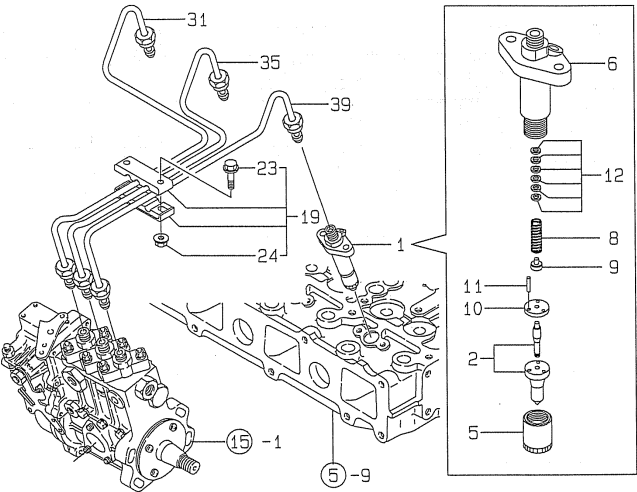


(A)=3TN100L-P
(B)=3TN100L-PS
(C)=4TN100L-P
(D)=4TN100L-PS
(E)=4TN100TL-P
(F)=4TN100TL-PS

REF.	LEV.	PARTS NO.	DESCRIPTION	Q'TY						I	R
				(A)	(B)	(C)	(D)	(E)	(F)		
77	2	22453-060000	WIRE 06X1000	2	2	2	2	2	2		
78	2	22492-060362	PIN 6X36	1	1	1	1	1	1		
79	2	23414-080012	GASKET 8	2	2						
80	2	23887-160002	PLUG 16I-HEX	1	1	1	1	1	1		
81	2	24311-000110	O-RING 1A P-11.0	1	1	1	1	1	1		
82	2	24341-000080	O-RING 1A S-8.0	2	2	2	2	2	2		
83	2	26106-060222	BOLT M6X22 PLATED	6	6	6	6	6	6		
84	2	26106-060352	BOLT M6X35 PLATED	1	1	1	1	1	1		
85	2	26116-060102	BOLT M5X10 PLATED	3	3	3	3	3	3		
86	2	26116-060356	BOLT M6X35 PLATED			1	1	1	1		
87	2	26376-120002	U-NUT M12			1	1	1	1		
88	2	26606-100002	NUT M10			1	1	1	1		
89	2	26667-080002	CAP NUT M8	1	1						
90	2	26756-080002	LOCK NUT M8 PLATED	1	1	1	1	1	1		
91	2	26756-080002	LOCK NUT M8 PLATED	1	1						
92	2	26777-120002	NUT 12	1	1	1	1	1	1		
93	2	43400-500450	SEAL WASHER 12S	2	2	2	2	2	2		
94	2	43400-500500	SEAL WASHER 16	1	1	1	1	1	1		
95	1	119100-61440	LEVER, GOVERNOR	1	1	1	1	1	1		
96	1	120323-61470	BOLT, CONTROL	1	1	1	1	1	1		
97	1	119100-61700	SPRING, GOVERNOR			1	1				
98	1	119100-61710	SPRING, GOVERNOR	1	1			1	1		
99	1	26667-080002	CAP NUT M8	1	1	1	1	1	1		
100	1	26756-080002	LOCK NUT M8 PLATED	1	1	1	1	1	1		
101	1	26911-080322	SCREW M8X32	1	1	1	1	1	1		
102	1	43400-500420	SEAL WASHER 8	2	2	2	2	2	2		

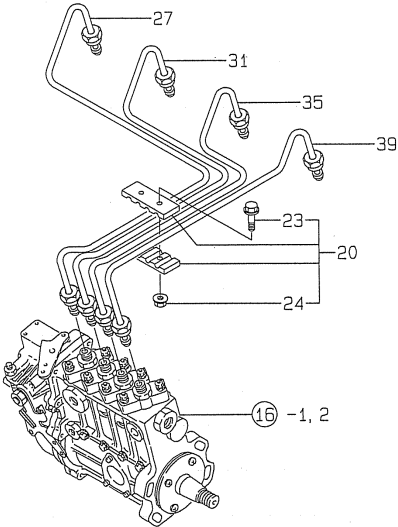
Fig.19.FUEL OIL INJECTION VALVE

Y0004580
3, 4TN100 (T) L-P (S)



D19045-53100
D19000-59100
D19100-59100

4TN100 (T) L-P (S)



Remarks
(M)MISPRINT.

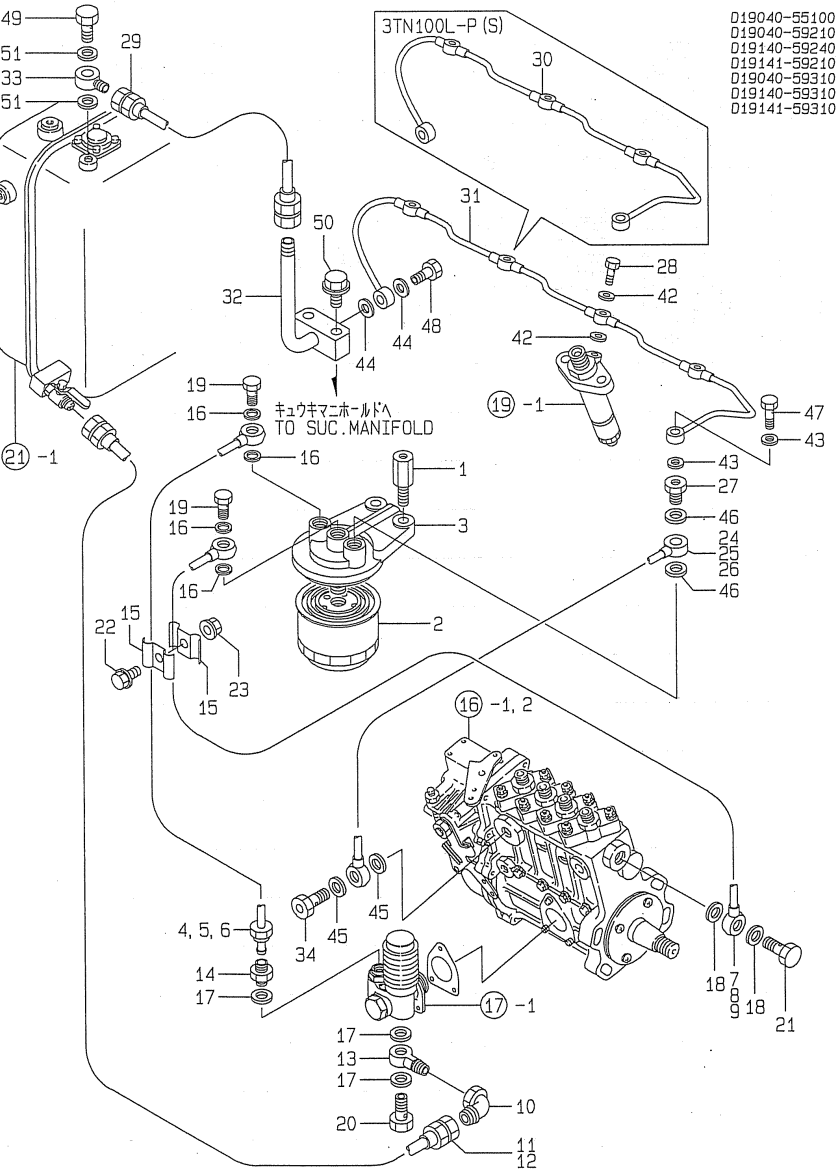
19.FUEL OIL INJECTION VALVE

(A)=3TN100L-P
(B)=3TN100L-PS
(C)=4TN100L-P
(D)=4TN100L-PS
(E)=4TN100TL-P
(F)=4TN100TL-PS

REF.	LEV.	PARTS NO.	DESCRIPTION	Q'TY						I	R
				(A)	(B)	(C)	(D)	(E)	(F)		
I	1	1	719000-73100	VALVE ASSY, F.INJECT	3	3	4	4	4	4	M
I	1A	1	719100-53200	VALVE ASSY, F.INJECT	3	3	4	4			
I	1B	1	719000-53100	VALVE ASSY, F.INJECT					4	4	
I	2A	2	119100-53000	VALVE W/CASE, F.I	3	3	4	4			
I	2B	2	119000-53000	NOZZLE ASSY.F.INJECT					4	4	
	5	2	114250-53080	NUT, NOZZLE CASE	3	3	4	4	4	4	
	6	2	119045-53100	BODY/NOZZLE HOLDER	3	3	4	4	4	4	
	8	2	114250-53120	SPRING, NOZZLE	3	3	4	4	4	4	
	9	2	114250-53130	SEAT, NOZZLE SPRING	3	3	4	4	4	4	
	10	2	114250-53140	PLATE, STOP	3	3	4	4	4	4	
	11	2	114250-53210	PIN	6	6	8	8	8	8	
	12	2	114250-53400	SHIM PACK	3	3	4	4	4	4	
	19	1	123372-59080	RETAINER	1	1					
	20	1	123472-59090	RETAINER			1	1	1	1	
	23	2	26106-060202	BOLT M6X20 PLATED	2	2	2	2	2	2	
	24	2	26366-060002	NUT M6	2	2	2	2	2	2	
	27	1	119100-59810	PIPE (1), F.INJECT			1	1	1	1	
	31	1	119100-59820	PIPE, F.INJECT	1	1	1	1	1	1	
	35	1	119100-59830	PIPE, F.INJECT	1	1	1	1	1	1	
	39	1	119100-59840	PIPE, F.INJECT	1	1	1	1	1	1	

Fig.20.FUEL OIL LINE

Y00D4580
3, 4TN100 (T) L-P (S)



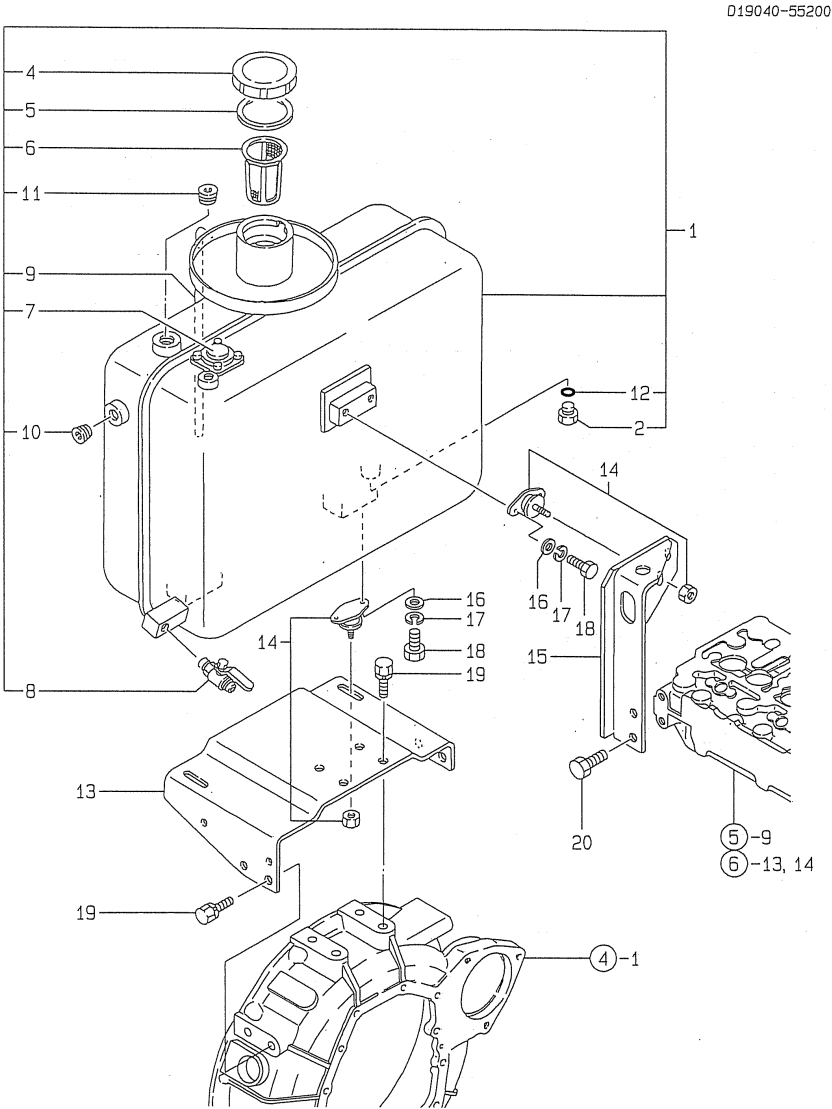
20.FUEL OIL LINE

(A)=3TN100L-P
(B)=3TN100L-PS
(C)=4TN100L-P
(D)=4TN100L-PS
(E)=4TN100TL-P
(F)=4TN100TL-PS

REF.	LEV.	PARTS NO.	DESCRIPTION	Q'TY						I	R
				(A)	(B)	(C)	(D)	(E)	(F)		
1	1	119040-55500	BOLT	2	2	2	2	2	2		
2	1	119000-55600	FILTER, FUEL	1	1	1	1	1	1		
3	1	129470-55610	BODY, FUEL FILTER	1	1	1	1	1	1		
4	1	119040-59010	PIPE, F.O.	1	1						
5	1	119140-59010	PIPE A COMP., FUEL			1	1				
6	1	119141-59010	PIPE, F.O.					1	1		
7	1	119040-59020	PIPE, F.O.	1	1						
8	1	119140-59020	PIPE B COMP., FUEL			1	1				
9	1	119141-59020	PIPE, F.O.					1	1		
10	1	119040-59050	ELBOW, PT 3/8	1	1	1	1	1	1		
11	1	119140-59110	PIPE 10AX560, FLEXBL			1	1	1	1		
12	1	171090-59111	PIPE, FO FLEXIBLE	1	1						
13	1	171090-59130	JOINT, PIPE	1	1	1	1	1	1		
14	1	144628-59520	UNION	1	1	1	1	1	1		
15	1	127450-59680	RETAINER	2	2	2	2	2	2		
16	1	23414-120000	GASKET 12, ROUND	4	4	4	4	4	4		
17	1	23414-140000	GASKET 14, ROUND	3	3	3	3	3	3		
18	1	23414-140000	GASKET 14, ROUND	2	2	2	2	2	2		
19	1	23857-060000	JOINT BOLT 6, PIPE	2	2	2	2	2	2		
20	1	23857-080000	JOINT BOLT 8, PIPE	1	1	1	1	1	1		
21	1	23857-080000	JOINT BOLT 8, PIPE	1	1	1	1	1	1		
22	1	26106-080142	BOLT 8X 14 PLATED	1	1	1	1	1	1		
23	1	26366-080002	NUT M 8	1	1	1	1	1	1		
24	1	119040-59040	PIPE, F.O.	1	1						
25	1	119140-59040	PIPE, F.O.			1	1				
26	1	119141-59040	PIPE, F.O.					1	1		
27	1	129495-59300	BOLT, PIPE JOINT	1	1	1	1	1	1		
28	1	129491-59540	BOLT 6, PIPE JOINT	3	3	4	4	4	4		
29	1	171094-59540	FLEXIBLE PIPE	1	1	1	1	1	1		
30	1	119040-59560	PIPE, F.O.	1	1						
31	1	119140-59560	PIPE, F.O.			1	1	1	1		
32	1	119040-59570	BEND, FUEL RETURN	1	1	1	1	1	1		
33	1	171090-59600	JOINT	1	1	1	1	1	1		
34	1	129100-59851	VALVE ASSY, CHECK	1	1	1	1	1	1		
42	1	23414-060000	GASKET 6, ROUND	6	6	8	8	8	8		
43	1	23414-080000	GASKET 8, ROUND	2	2	2	2	2	2		
44	1	23414-080000	GASKET 8, ROUND	2	2	2	2	2	2		
45	1	23414-120000	GASKET 12, ROUND	2	2	2	2	2	2		
46	1	23414-140000	GASKET 14, ROUND	2	2	2	2	2	2		
47	1	23851-030000	JOINT BOLT 3	1	1	1	1	1	1		
48	1	23851-030000	JOINT BOLT 3	1	1	1	1	1	1		
49	1	23857-080000	JOINT BOLT 8, PIPE	1	1	1	1	1	1		
50	1	26106-100352	BOLT M10X 35 PLATED	2	2	2	2	2	2		
51	1	43400-500470	SEAL WASHER 14S	2	2	2	2	2	2		

Fig.21.FUEL TANK

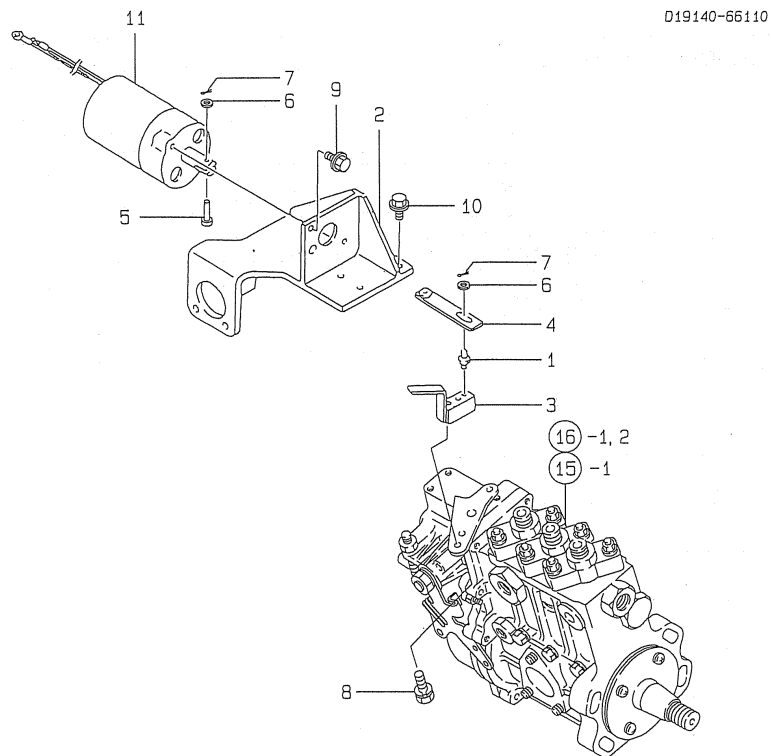
Y00D4580
3, 4TN100 (T) L-P (S)



21.FUEL TANK

(A)=3TN100L-P
(B)=3TN100L-PS
(C)=4TN100L-P
(D)=4TN100L-PS
(E)=4TN100TL-P
(F)=4TN100TL-PS

REF.	LEV.	PARTS NO.	DESCRIPTION	Q'TY						I	R
				(A)	(B)	(C)	(D)	(E)	(F)		
1	1	171090-55103	TANK ASSY, FUEL	1	1	1	1	1	1		
2	2	124060-01640	PLUG M12	1	1	1	1	1	1		
4	2	105015-55040	CAP, FUEL TANK	1	1	1	1	1	1		
5	2	101504-55051	GASKET, TANK CAP	1	1	1	1	1	1		
6	2	101504-55101	STRAINER, FUEL INLET	1	1	1	1	1	1		
7	2	123563-55200	LEVEL	1	1	1	1	1	1		
8	2	123563-55300	COCK	1	1	1	1	1	1		
9	2	23061-070330	PIPE 7X 330	1	1	1	1	1	1		
10	2	23871-030000	PLUG PT3/8, SCREW	1	1	1	1	1	1		
11	2	23871-040000	PLUG PT1/2, SCREW	1	1	1	1	1	1		
12	2	24311-000140	O-RING 1A P-14.0	1	1	1	1	1	1		
13	1	123563-55800	STAY, FUEL TANK	1	1	1	1	1	1		
14	1	171048-55850	ABSORBER	3	3	3	3	3	3		
15	1	171090-55851	BRACKET, FUEL TANK	1	1	1	1	1	1		
16	1	22117-120000	WASHER 12	2	2	2	2	2	2		
17	1	22217-120000	SPRING WASHER 12	2	2	2	2	2	2		
18	1	26013-060142	BOLT M6X 14	6	6	6	6	6	6		
19	1	26013-100222	BOLT M10X 22	8	8	8	8	8	8		
20	1	26116-120252	BOLT M12X 25 PLATED	2	2	2	2	2	2		



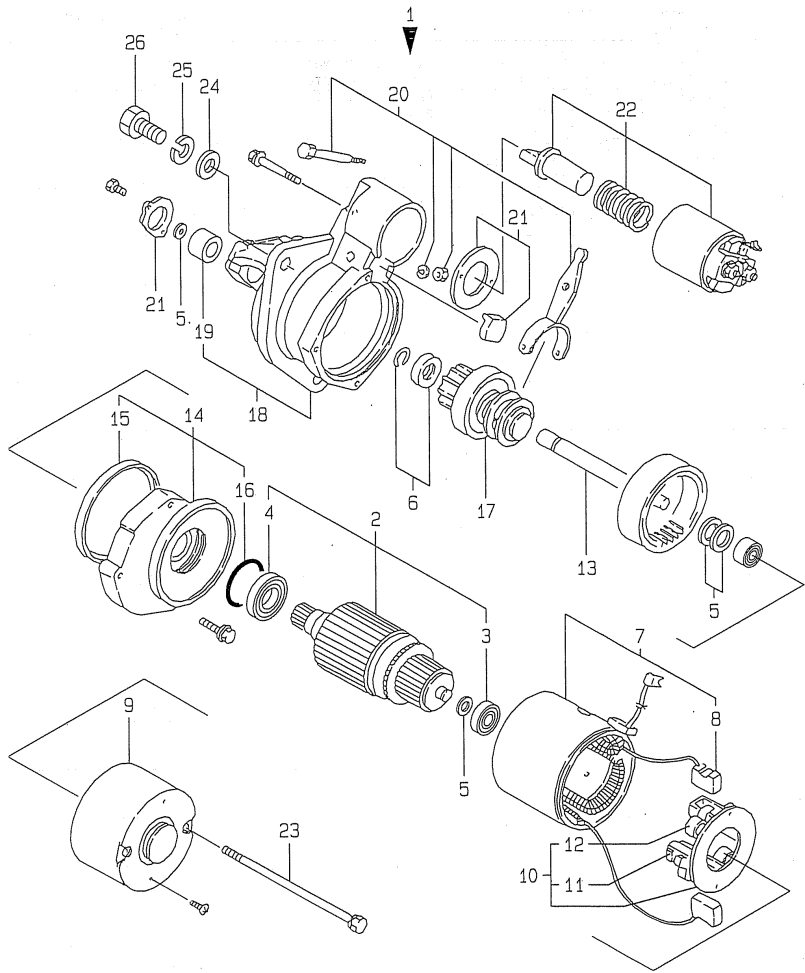
(D)=4TN100L-PS
(E)=4TN100TL-P
(F)=4TN100TL-PS

REF.	LEV.	PARTS NO.	DESCRIPTION	QTY						I	R
				(A)	(B)	(C)	(D)	(E)	(F)		
1	1	120220-66250	PIN (A)	1	1	1	1	1	1		
2	1	119140-66450	BRACKET,SOLENOID	1	1	1	1	1	1		
3	1	124610-66460	LEVER, ENG. STOP	1	1	1	1	1	1		
4	1	124610-66470	LEVER, SOLENOID	1	1	1	1	1	1		
5	1	124790-66950	PIN	1	1	1	1	1	1		
6	1	221111-050000	WASHER	2	2	2	2	2	2		
7	1	22360-050000	SNAP PIN 5	2	2	2	2	2	2		
8	1	26013-060149	BOLT M 6X 14	2	2	2	2	2	2		
9	1	26106-060162	BOLT M 6X 16 PLATED	2	2	2	2	2	2		
10	1	26106-080142	BOLT 8X 14 PLATED	4	4	4	4	4	4		
11	1	46116-800040	SOLENOID VALVE	1	1	1	1	1	1		

Fig.23.STARTING MOTOR

Y00D4580
3. 4TN100 (T) L-P (S)

D24610-77100



23.STARTING MOTOR

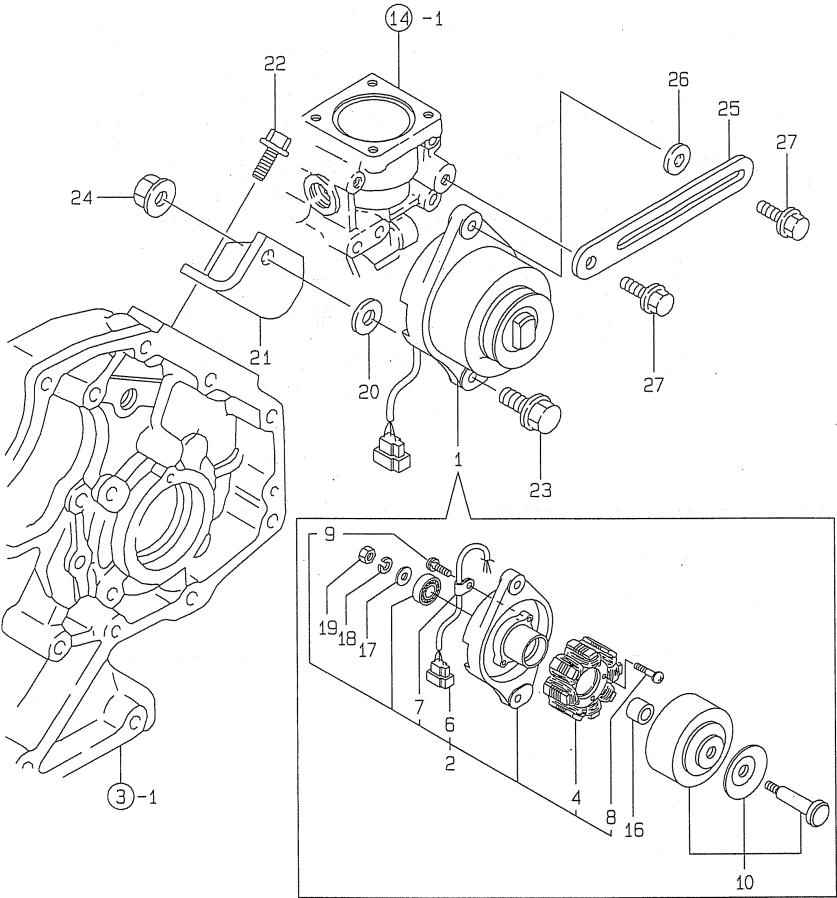
(A)=3TN100L-P
(B)=3TN100L-PS
(C)=4TN100L-P
(D)=4TN100L-PS
(E)=4TN100TL-P
(F)=4TN100TL-PS

REF.	LEV.	PARTS NO.	DESCRIPTION	Q'TY						I	R
				(A)	(B)	(C)	(D)	(E)	(F)		
1	1	124610-77010	STARTER	1	1	1	1	1	1		
2	2	X213011001	ARMATURE ASSY	1	1	1	1	1	1		
3	3	X21302302	BALL BEARING	1	1	1	1	1	1		
4	3	X21303302	BALL BEARING	1	1	1	1	1	1		
5	2	X21302115	WASHER KIT, THRUST	1	1	1	1	1	1		
6	2	X21303119	STOPPER SET, PINION	1	1	1	1	1	1		
7	2	X21308220	COIL ASSY, FIELD	1	1	1	1	1	1		
8	3	X21308311	BRUSH (+)	2	2	2	2	2	2		
9	2	X225013012	COVER, REAR	1	1	1	1	1	1		
10	2	X21307305	HOLDER ASSY, BRUSH	1	1	1	1	1	1		
11	3	X21305312	BRUSH (-)	2	2	2	2	2	2		
12	3	X21305313	SPRING, BRUSH	4	4	4	4	4	4		
13	2	X225011113	SHAFT ASSY, GEAR	1	1	1	1	1	1		
14	2	X21304400	BEARING ASSY, CENTER	1	1	1	1	1	1		
15	3	X21301402	SEAL, OIL	1	1	1	1	1	1		
16	3	X21302402	O-RING	1	1	1	1	1	1		
17	2	X213035002	PINION ASSY	1	1	1	1	1	1		
18	2	X213046003	HOUSING ASSY, GEAR	1	1	1	1	1	1		
19	3	X21302601	METAL CASE BEARING	1	1	1	1	1	1		
20	2	X21302605	LEVER SET	1	1	1	1	1	1		
21	2	X21303610	COVER SET, DUST	1	1	1	1	1	1		
22	2	X213017001	SWITCH ASSY, MAGNET.	1	1	1	1	1	1		
23	2	X21305820	BOLT, THROUGH	2	2	2	2	2	2		
24	1	22137-120000	WASHER 12POLISHED	3	3	3	3	3	3		
25	1	22217-120000	SPRING WASHER 12	3	3	3	3	3	3		
26	1	26116-120352	BOLT M12X 35 PLATED	3	3	3	3	3	3		

Fig.24.GENERATOR

Y00D4580
3, 4TN100 (T) L-P (S)

019040-77200
019100-77300



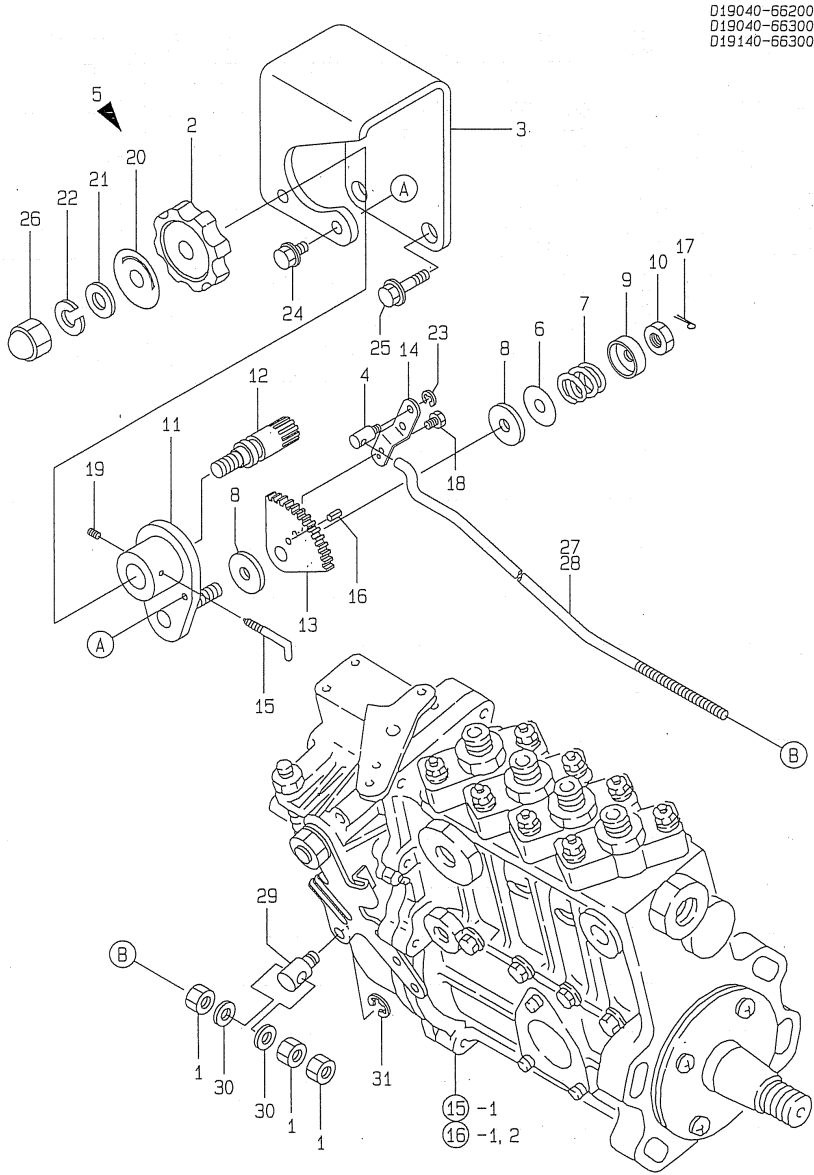
24.GENERATOR

(A)=3TN100L-P
(B)=3TN100L-PS
(C)=4TN100L-P
(D)=4TN100L-PS
(E)=4TN100TL-P
(F)=4TN100TL-PS

REF.	LEV.	PARTS NO.	DESCRIPTION	Q'TY						I	R
				(A)	(B)	(C)	(D)	(E)	(F)		
1	1	171301-77201	GENERATOR (15A)	1	1	1	1	1	1		
2	2	XM08137	PLATE ASSY	1	1	1	1	1	1		
4	3	XM08180	STATOR ASSY	1	1	1	1	1	1		
6	3	XM17878	COUPLER	1	1	1	1	1	1		
7	3	XM36410	CLAMP	1	1	1	1	1	1		
8	3	26022-040252	SCREW M4X25	2	2	2	2	2	2		
9	3	XYSPS4008	SCREW	1	1	1	1	1	1		
10	2	XM82184	FLYWHEEL ASSY	1	1	1	1	1	1		
16	2	106383-44720	SPACER	1	1	1	1	1	1		
17	2	106383-44730	WASHER	1	1	1	1	1	1		
18	2	22212-100000	SPRING WASHER 10	1	1	1	1	1	1		
19	2	26716-100002	NUT 10	1	1	1	1	1	1		
20	1	121575-21850	WASHER	1	1	1	1	1	1		
21	1	119000-77340	BRACKET,GENERATOR	1	1	1	1	1	1		
22	1	26106-080202	BOLT M8X20 PLATED	2	2	2	2	2	2		
23	1	26106-100252	BOLT M10X25 PLATED	1	1	1	1	1	1		
24	1	26366-100002	NUT M10	1	1	1	1	1	1		
25	1	121522-77330	ADJUSTER, BELT	1	1	1	1	1	1		
26	1	121236-77340	SPACER	1	1	1	1	1	1		
27	1	26106-080222	BOLT M8X22 PLATED	2	2	2	2	2	2		

Fig.25.ENGINE CONTROL DEVICE

Y00D4580
3, 4TN100 (T) L-P (S)



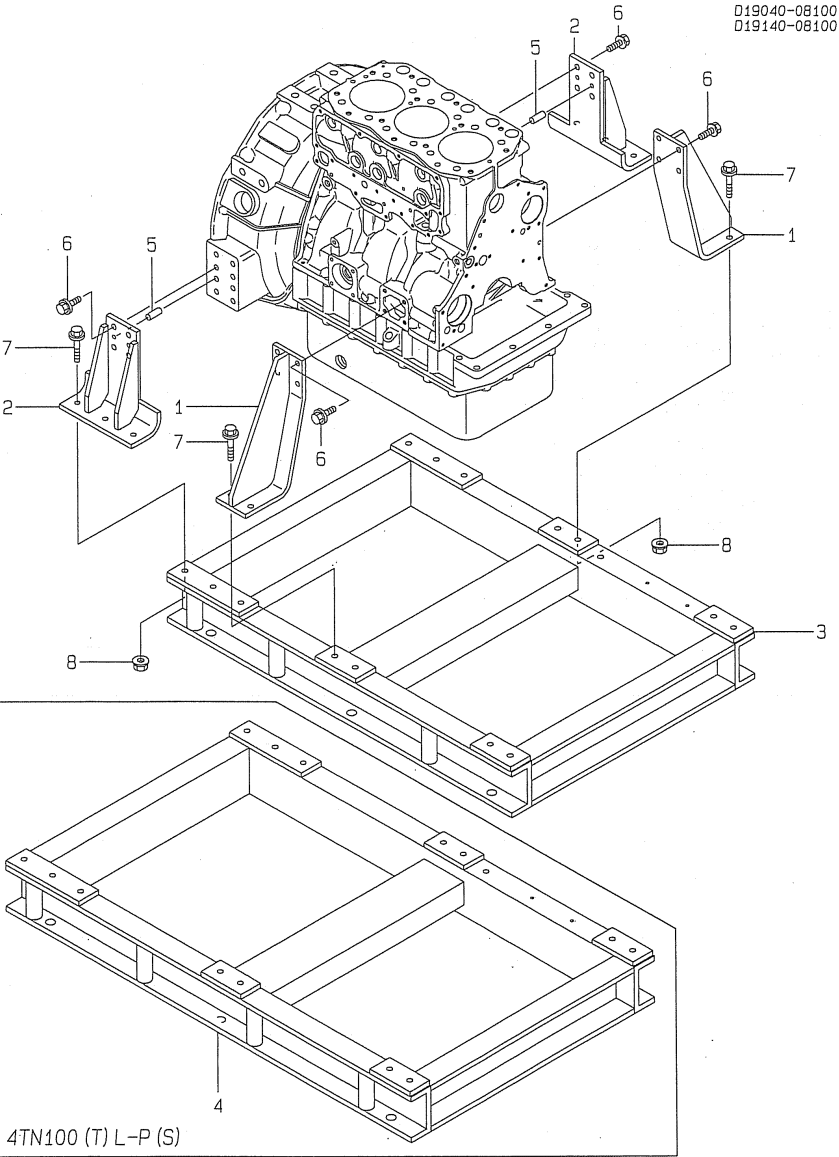
25.ENGINE CONTROL DEVICE

(A)=3TN100L-P
(B)=3TN100L-PS
(C)=4TN100L-P
(D)=4TN100L-PS
(E)=4TN100TL-P
(F)=4TN100TL-PS

REF.	LEV.	PARTS NO.	DESCRIPTION	Q'TY						I	R
				(A)	(B)	(C)	(D)	(E)	(F)		
1	1	26756-060002	LOCK NUT M5 PLATED	3	3	3	3	3	3		
2	1	126650-66020	HANDLE, REGULATOR	1	1	1	1	1	1		
3	1	119040-66110	BRACKET	1	1	1	1	1	1		
4	1	119888-66130	PIVOT	1	1	1	1	1	1		
5	1	171048-67010	REGULATOR ASSY	1	1	1	1	1	1		
6	2	171102-66080	SPACER	1	1	1	1	1	1		
7	2	104200-66820	SPRING	1	1	1	1	1	1		
8	2	104200-66830	PLATE, FRICTION	2	2	2	2	2	2		
9	2	104200-66850	WASHER (B)	1	1	1	1	1	1		
10	2	104200-66860	NUT	1	1	1	1	1	1		
11	2	171085-67100	BRACKET, GEAR	1	1	1	1	1	1		
12	2	171085-67110	SHAFT, DRIVING	1	1	1	1	1	1		
13	2	171085-67120	GEAR	1	1	1	1	1	1		
14	2	171048-67130	LEVER	1	1	1	1	1	1		
15	2	171048-67140	STOPPER	1	1	1	1	1	1		
16	2	22351-020006	SPRING PIN 2X6	1	1	1	1	1	1		
17	2	22411-200150	COTTER PIN	1	1	1	1	1	1		
18	2	26116-060082	BOLT 6X8	1	1	1	1	1	1		
19	2	26921-050122	SCREW M5X 12	1	1	1	1	1	1		
20	1	170064-67210	LABEL, HANDLE	1	1	1	1	1	1		
21	1	22117-100000	WASHER 10	1	1	1	1	1	1		
22	1	22217-100000	SPRING WASHER 10	1	1	1	1	1	1		
23	1	22272-000050	CIRCLIP E-5	1	1	1	1	1	1		
24	1	26106-060102	BOLT 6X10 PLATED	2	2	2	2	2	2		
25	1	26106-100202	BOLT M10X20 PLATED	2	2	2	2	2	2		
26	1	26657-100002	CAP NUT M10	1	1	1	1	1	1		
27	1	119040-66300	LINK, ENGINE CONTROL	1	1						
28	1	119140-66300	LINK, ENGINE CONTROL			1	1	1	1		
29	1	171085-67210	PIVOT	1	1	1	1	1	1		
30	1	22117-050000	WASHER 5	2	2	2	2	2	2		
31	1	22272-000070	CIRCLIP E-7	1	1	1	1	1	1		

Fig.26.ENGINE SUPPORT

Y00D4580
3, 4TN100 (T) L-P (S)



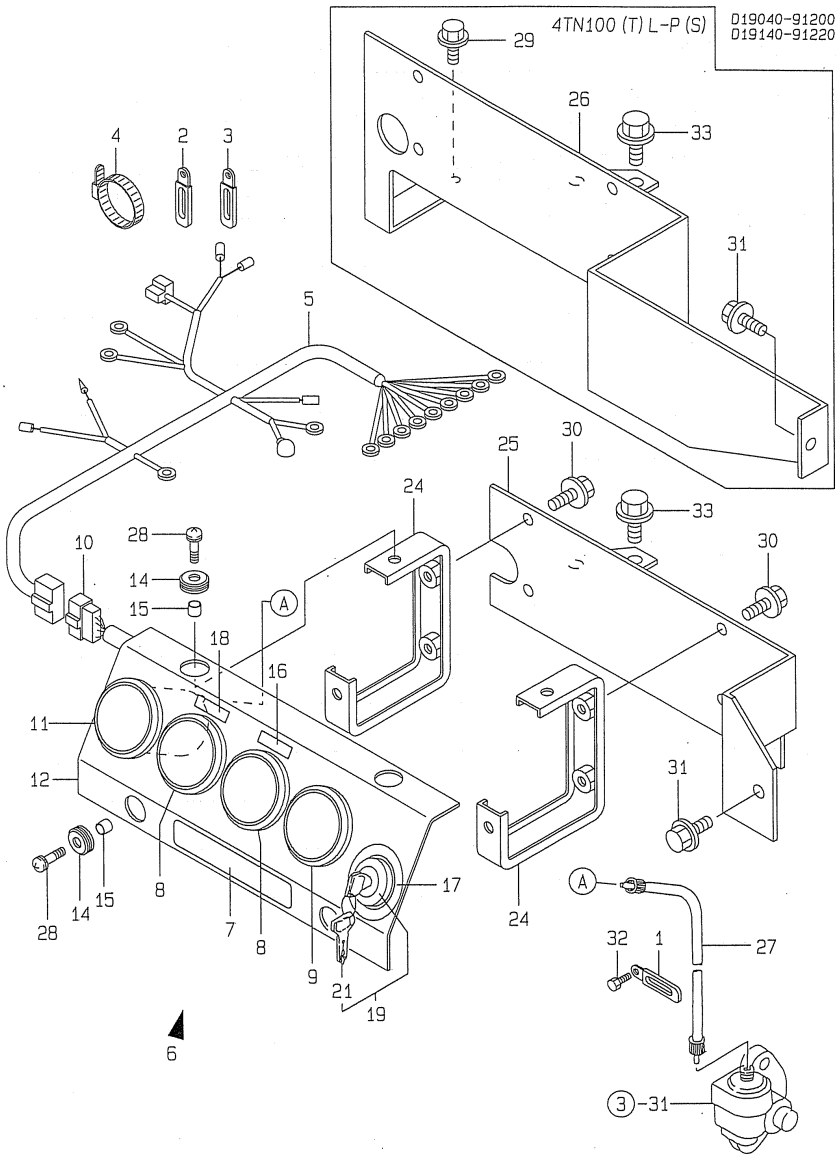
26.ENGINE SUPPORT

(A)=3TN100L-P
(B)=3TN100L-PS
(C)=4TN100L-P
(D)=4TN100L-PS
(E)=4TN100TL-P
(F)=4TN100TL-PS

REF.	LEV.	PARTS NO.	DESCRIPTION	Q'TY						I	R
				(A)	(B)	(C)	(D)	(E)	(F)		
1	1	119040-08020	FOOT A ENGINE	2	2	2	2	2	2		
2	1	171090-08030	BRACKET	2	2	2	2	2	2		
3	1	119040-08100	COMMON BED	1	1						
4	1	119140-08100	COMMON BED			1	1	1	1		
5	1	22312-080200	PARALLEL PIN 8X20	4	4	4	4	4	4		
6	1	26106-100222	BOLT M10X 22 PLATED	16	16	16	16	16	16		
7	1	26106-100452	BOLT M10X 45 PLATED	10	10	10	10	10	10		
8	1	26366-100002	NUT M10	10	10	10	10	10	10		

Fig.27.PANEL

Y00D4580
3, 4TN100 (T) L-P (S)



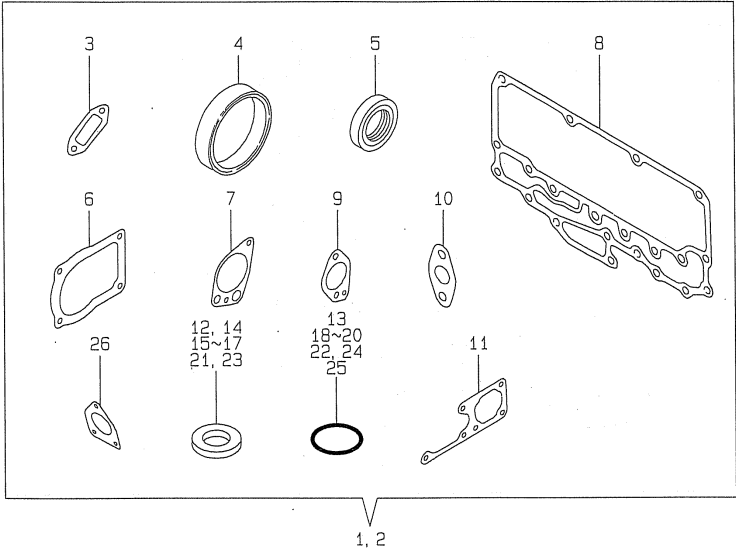
27.PANEL

(A)=3TN100L-P
(B)=3TN100L-PS
(C)=4TN100L-P
(D)=4TN100L-PS
(E)=4TN100TL-P
(F)=4TN100TL-PS

REF.	LEV.	PARTS NO.	DESCRIPTION	Q'TY						I	R
				(A)	(B)	(C)	(D)	(E)	(F)		
1	1	194440-51620	CLAMP, WIRE HARNESS	1	1	1	1	1	1		
2	1	194440-51620	CLAMP, WIRE HARNESS	1	1	1	1	1	1		
3	1	194180-51640	CLAMP, WIRE HARNESS	1	1	1	1	1	1		
4	1	121750-59890	CLAMP 140	2	2	2	2	2	2		
5	1	119040-91020	HARNESS (A), WIRE	1	1	1	1	1	1		
6	1	129113-91100	PANEL ASSY, INSTRUM.	1	1	1	1	1	1		
7	2	104507-07190	LABEL, YANMAR	1	1	1	1	1	1		
8	2	171010-77850	THERMOMETER, C.W.	2	2	2	2	2	2		
9	2	171090-91010	GAUGE, PRESSURE	1	1	1	1	1	1		
10	2	129113-91030	HARNESS (B), WIRE	1	1	1	1	1	1		
11	2	171011-91100	TACHOMETER	1	1	1	1	1	1		
12	2	129113-91110	HOUSING, PANEL	1	1	1	1	1	1		
14	2	121400-91520	ABSORBER	4	4	4	4	4	4		
15	2	121400-91530	SPACER	4	4	4	4	4	4		
16	2	132310-91900	LABEL (LO PRESSURE	1	1	1	1	1	1		
17	2	171048-91900	LABEL	1	1	1	1	1	1		
18	2	132310-91920	LABEL, C.W PRESSURE	1	1	1	1	1	1		
19	2	933110-00100	SWITCH ASSY, STARTER	1	1	1	1	1	1		
21	3	933110-00301	KEY ASSY	1	1	1	1	1	1		
24	1	119888-91120	SUPPORT, PANEL	2	2	2	2	2	2		
25	1	119040-91130	BRACKET	1	1						
26	1	119140-91140	BRACKET			1	1	1	1		
27	1	124701-91140	CABLE L= 985	1	1	1	1	1	1		
28	1	26033-060202	SCREW M 6X 20	4	4	4	4	4	4		
29	1	26106-060122	BOLT M 6X 12 PLATED			1	1	1	1		
30	1	26106-080122	BOLT M 8X 12 PLATED	4	4	4	4	4	4		
31	1	26106-080122	BOLT M 8X 12 PLATED	1	1	1	1	1	1		
32	1	26476-060142	BOLT M 6X 14, TAPPING	1	1	1	1	1	1		
33	1	26106-080122	BOLT M 8X 12 PLATED	2	2	2	2	2	2		

Fig.28.GASKET SET(CYLINDER BLOCK)

Y00D4580
3, 4TN100 (T) L-P (S)



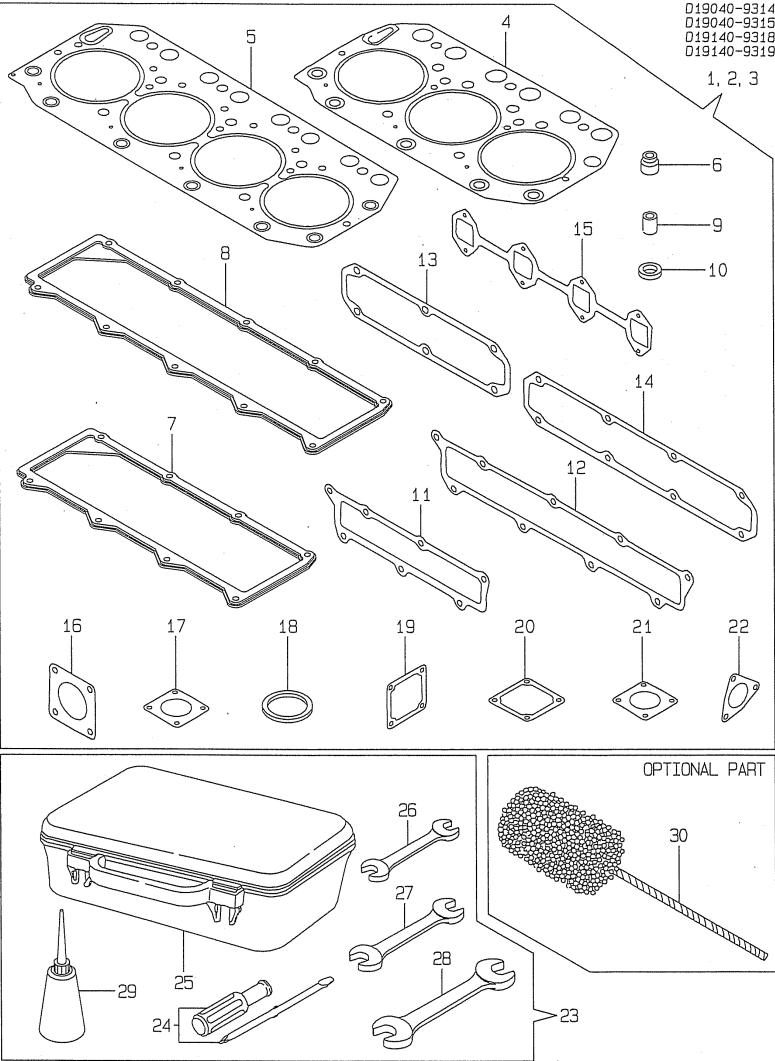
Remarks
(1) OPTIONAL PART.

28.GASKET SET(CYLINDER BLOCK)

REF.	LEV.	PARTS NO.	DESCRIPTION	Q'TY						I	R
				(A)	(B)	(C)	(D)	(E)	(F)		
1	1		GASKET SET(NON ASB.)	1	1	1	1				1
2	1		GASKET SET(NON ASB.)					1	1		1
3	2	119000-01771	GASKET, (NON ASB.)	1	1	1	1	1	1		
4	2	124411-01780	SEAL,HTC95,115,12	1	1	1	1	1	1		
5	2	121850-01800	SEAL, OIL	1	1	1	1	1	1		
6	2	124610-01862	PACKING, COVER	2	2	2	2	2	2		
7	2	119000-32020	GASKET, L.O.PUMP	1	1	1	1	1	1		
8	2	119000-33021	GASKET, (NON-ASB.)	1	1	1	1	1	1		
9	2	119000-33041	GASKET,BEND(NON-ASB.	1	1	1	1	1	1		
10	2	121952-33071	GASKET, (NON-ASB.)	2	2	2	2	2	2		
11	2	119000-42021	GASKET, (NON-ASB.)	1	1	1	1	1	1		
12	2	124465-44950	GASKET 16	1	1	1	1	1	1		
13	2	124410-51960	O-RING	1	1	1	1	1	1		
14	2	23414-080000	GASKET 8, ROUND	2	2	2	2	4	4		
15	2	23414-140000	GASKET 14, ROUND	1	1	1	1	1	1		
16	2	23414-160000	GASKET 16, ROUND	1	1	1	1	1	1		
17	2	23414-180000	GASKET 18, ROUND	2	2	2	2	2	2		
17-1	2	23414-170000	GASKET 17, ROUND			2	2	2	2		N
(C=E2009.12) (D=E2009.12)				(E=E2009.12)		(F=E2009.12)					
18	2	24311-000220	O-RING 1A P-22.0	1	1	1	1	1	1		
19	2	24311-000360	O-RING 1A P-36.0	1	1	1	1	1	1		
20	2	24341-000240	O-RING 1A S-24.0	1	1	1	1	1	1		
21	2	23414-220000	PACKING 22,ROUND	1	1	1	1	1	1		
22	2	24341-001350	O-RING 1A S-135.0	1	1	1	1	1	1		
23	2	43400-500420	SEAL WASHER 8	1	1	1	1	1	1		
24	2	24311-000320	O-RING 1A P-32.0	1	1	1	1	1	1		
25	2	24311-000320	O-RING 1A P-32.0	1	1	1	1	1	1		
26	2	124410-51861	GASKET, (NON-ASB.)	1	1	1	1	1	1		

Fig.29.GASKET SET(CYLINDER HEAD)&TOOL

Y0004580
3, 4TN100 (T) L-P (S)



Remarks
(1) OPTIONAL PART.

29.GASKET SET(CYLINDER HEAD)&TOOL

(A)=3TN100L-P
(B)=3TN100L-PS
(C)=4TN100L-P

(D)=4TN100L-PS
(E)=4TN100TL-P
(F)=4TN100TL-PS

REF.	LEV.	PARTS NO.	DESCRIPTION	Q'TY						I	R
				(A)	(B)	(C)	(D)	(E)	(F)		
1	1			1	1						1
2	1					1	1				1
3	1							1	1		1
4	2	119000-01340	GASKET, (NON-ASB.)	1	1						
5	2	119100-01340	GASKET, (NON-ASB.)			1	1	1	1		
6	2	121850-11150	SEAL, VALVE STEM	6	6	8	8	8	8		
7	2	119000-11320	GASKET, BONNET	1	1						
8	2	119100-11320	GASKET, BONNET			1	1	1	1		
9	2	119625-11870	PROTECTOR, NOZZLE	3	3	4	4	4	4		
10	2	119625-11880	SEAT, NOZZLE	3	3	4	4	4	4		
11	2	119000-12110	GASKET, SUCMANIFOLD	1	1						
12	2	119100-12112	GASKET, (NON-ASB.)			1	1	1	1		
13	2	119000-13200	GASKET, EXHMANIFOLD	1	1						
14	2	119100-13200	GASKET, EXHMANIFOLD			1	1				
15	2	119101-13200	GASKET, EXHMANIFOLD					1	1		
16	2	129400-13201	GASKET, (NON-ASB.)	1	1	1	1				
17	2	121850-49540	GASKET, THERMOSTAT	1	1	1	1	1	1		
18	2	121850-49550	GASKET, THERMOSTAT	1	1	1	1	1	1		
19	2	121850-77021	GASKET, (NON-ASB.)	1	1	1	1				
20	2	121850-77021	GASKET, (NON-ASB.)					1	1		
21	2	129472-18090	GASKET					1	1		
22	2	129792-13520	GASKET					1	1		
23	1	171001-93100	TOOL ASSY	1	1	1	1	1	1		
24	2	104200-92350	DRIVER, SCREW	1	1	1	1	1	1		
25	2	104200-92600	BOX, TOOL	1	1	1	1	1	1		
26	2	28110-100120	WRENCH 10X12	1	1	1	1	1	1		
27	2	28110-140170	WRENCH 14X17	1	1	1	1	1	1		
28	2	28110-190220	WRENCH 19X22	1	1	1	1	1	1		
29	2	28210-000140	FEEDER, OIL	1	1	1	1	1	1		
30	1	129400-92450	FLEX HONE	1	1	1	1	1	1		1