

0CD50-M00190EN

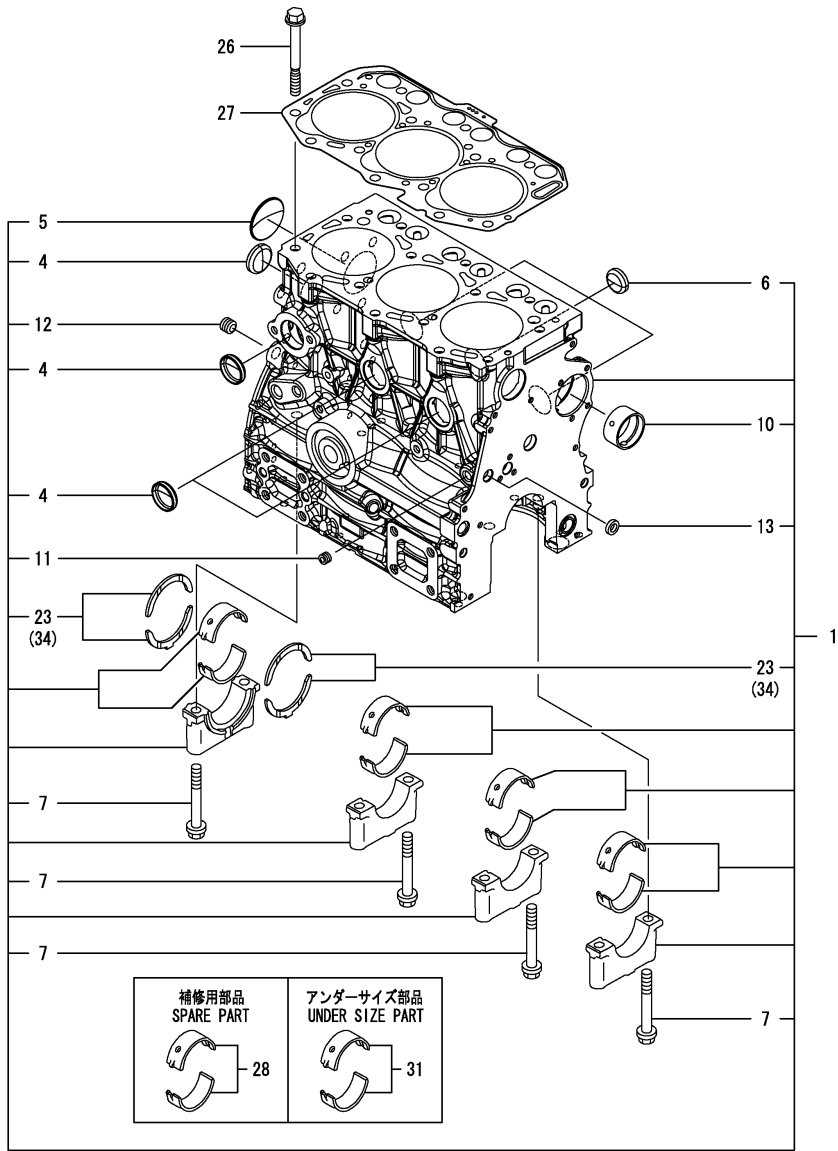
P R E F A C E

This parts catalog is the 1st edition of 3TNV80F-SNHB for Hitachi Construction Machinery Co., Ltd.

Published : March, 2014

Contents

Fig. No.	Fig. Name	Fig. No.	Fig. Name
3TNV80F-SNHB			
1.	CYLINDER BLOCK		
2.	GEAR HOUSING		
3.	FLYWHEEL HOUSING & OIL SUMP		
4.	CYLINDER HEAD & BONNET		
5.	EXHAUST MANIFOLD		
6.	CAMSHAFT & DRIVING GEAR		
7.	CRANKSHAFT & PISTON		
8.	LUB.OIL SYSTEM		
9.	COOLING WATER SYSTEM		
10.	FUEL INJECTION PUMP		
11.	GOVERNOR		
12.	FUEL INJECTION VALVE		
13.	FUEL FILTER		
14.	STARTING MOTOR		
15.	GENERATOR		
16.	GASKET SET		



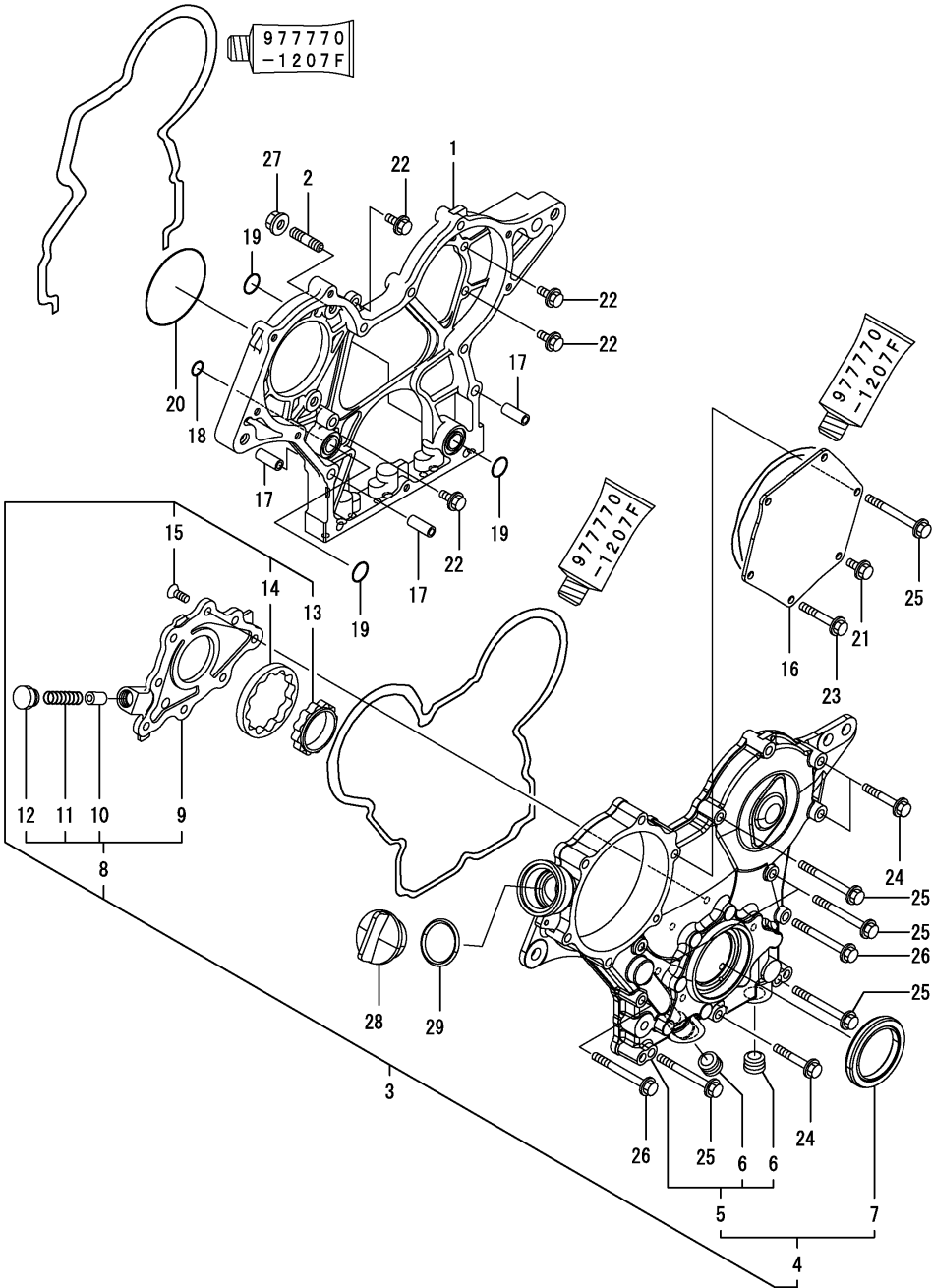
Remarks
(1)Spare parts.
(2)Under-sized (U.S.=0.25) parts.
(3)Over-sized (O.S.=0.25) parts.

				OCD50-M00190 Fig.1									
				(A)=3TNV80F-SNHB		(D)=							
				(B)=		(E)=							
				(C)=		(F)=							
No.	Lev.	Parts No.	Description	Q'ty								I	R
				(A)	(B)	(C)	(D)	(E)	(F)				
1	1	119E00-01560	BLOCK ASSY, CYLINDER	1									
4	2	105311-01090	PLUG, CUP TYPE 30	4									
5	2	119623-01250	PLUG, DISH TYPE 45	1									
6	2	119285-01990	PLUG, CUP TYPE 25	3									
7	2	119620-02020	BOLT, METAL CAP	8									
10	2	119717-02411	BUSH, CAMSHAFT	1									
11	2	124060-01050	PLUG, PT1/8	1									
12	2	124160-01910	PLUG, PT1/4	1									
13	2	27241-120000	PLUG, 12	1									
23	2	119717-02930	BEARING ASSY, THRUST	2									
26	1	119810-01200	BOLT, CYLINDER HEAD	14									
27	1	119E10-01330	GASKET SET, HEAD	1									
28	1	719717-02901	BEARING ASSY, MAIN	4							1		
31	1	719717-02911	BEARING ASSY, MAIN	4							2		
34	1	119810-02941	BEARING, THRUST 0.25	2							3		

Fig.2. GEAR HOUSING

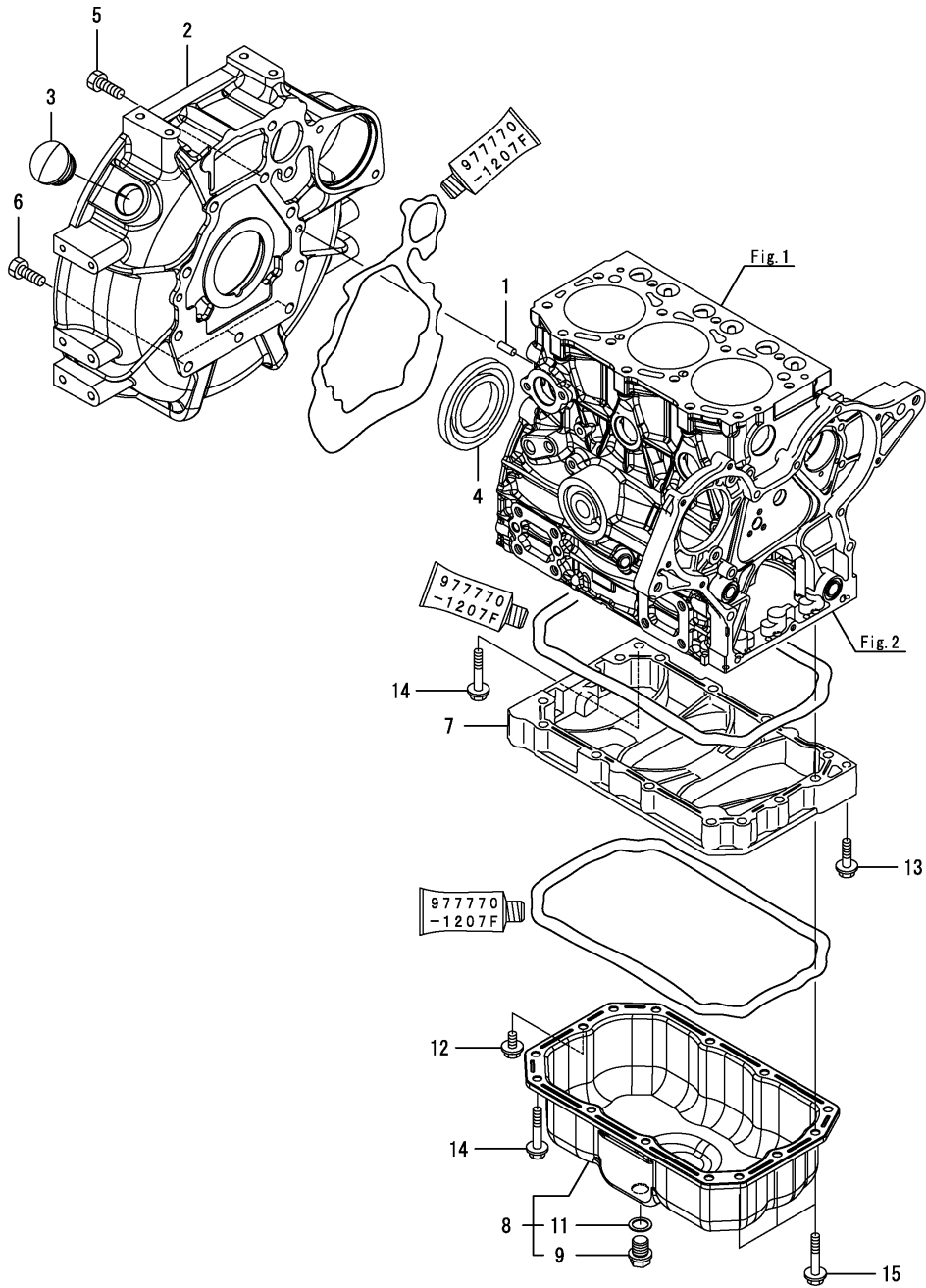
(A)=3TNV80F-SNHB
(B)=
(C)=

(D)=
(E)=
(F)=



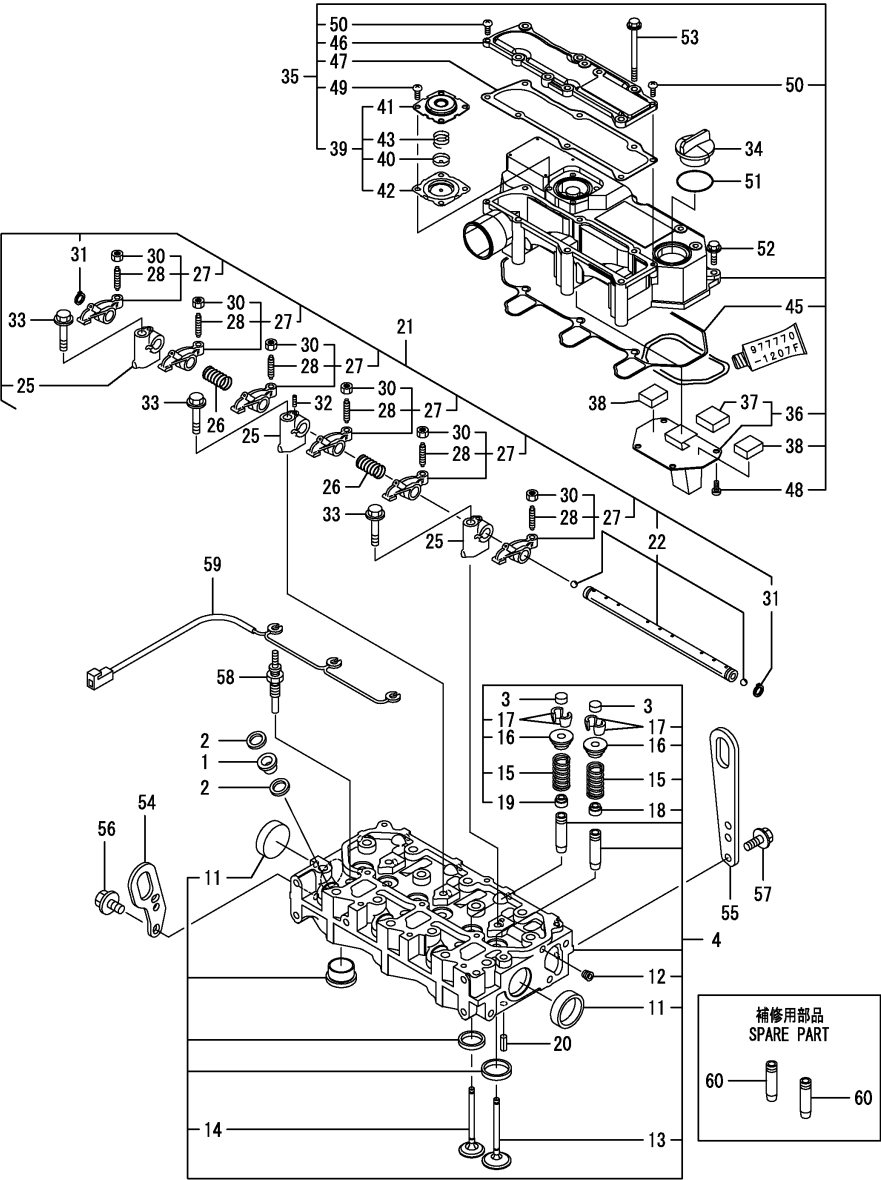
No.	Lev.	Parts No.	Description	Q'ty						I	R
				(A)	(B)	(C)	(D)	(E)	(F)		
1	1	119717-01501	CASE, GEAR	1							
2	1	119717-01570	BOLT, STUD	3							
3	1	119734-01590	COVER ASSY,GEAR CASE	1							
4	2	719734-01500	COVER ASSY,GEAR CASE	1							
5	3	119717-01521	COVER, GEAR CASE	1							
6	4	23876-030000	PLUG, R03	2							
7	3	119717-01800	SEAL, OIL	1							
8	2	119717-32100	COVER ASSY	1							
9	3	119717-32080	COVER, PUMP	1							
10	3	129900-32130	VALVE, RELIEF	1							
11	3	129001-32320	SPRING	1							
12	3	129001-32330	PLUG	1							
13	2	119717-32110	ROTOR, INNER	1							
14	2	119717-32120	ROTOR, OUTER	1							
15	2	119802-32130	SCREW, M6X16	8							
16	1	119717-01750	COVER, PUMP	1							
17	1	119660-01911	PIPE, DOWEL 6X17	4							
18	1	119624-32040	O-RING, P12.0	1							
19	1	119717-32050	O-RING, P17.0	3							
20	1	121850-51960	O-RING	1							
21	1	26106-060122	BOLT, M6X 12 PLATED	1							
22	1	26106-060162	BOLT, M6X 16 PLATED	4							
23	1	26106-060402	BOLT, M6X 40 PLATED	4							
24	1	26106-060402	BOLT, M6X 40 PLATED	3							
25	1	26106-060602	BOLT, M6X 60 PLATED	7							
26	1	26106-060652	BOLT, M6X 65 PLATED	2							
27	1	26306-080002	NUT, M8	3							
28	1	124160-01751	CAP, FILLER	1							
29	1	24311-000320	O-RING, 1AP32.0	1							

Fig.3. FLYWHEEL HOUSING & OIL SUMP



				(A)=3TNV80F-SNHB		(D)=		0CD50-M00190 Fig.3			
				(B)=		(E)=					
				(C)=		(F)=					
No.	Lev.	Parts No.	Description	Q'ty						I	R
				(A)	(B)	(C)	(D)	(E)	(F)		
1	1	129100-01580	PIN, PARALLEL 8X16	2							
2	1	119717-01601	HOUSING, FLYWHEEL	1							
3	1	119620-01750	CAP	1							
4	1	119734-02220	SEAL, OIL	1							
5	1	26206-100252	BOLT, M10X 25 PLATED	8							
6	1	26206-100302	BOLT, M10X 30 PLATED	3							
7	1	119717-01720	SPACER, OIL-PAN	1							
8	1	119740-01770	OIL PAN ASSY	1							
9	2	105425-01690	PLUG, M16	1							
11	2	22190-160002	WASHER, SEAL 16	1							
12	1	26106-080122	BOLT, M8X 12 PLATED	1							
13	1	26106-080302	BOLT, M8X 30 PLATED	1							
14	1	26106-080452	BOLT, M8X 45 PLATED	11							
15	1	26106-080502	BOLT, M8X 50 PLATED	3							

Fig.4. CYLINDER HEAD & BONNET



Remarks
(1)Spare parts.

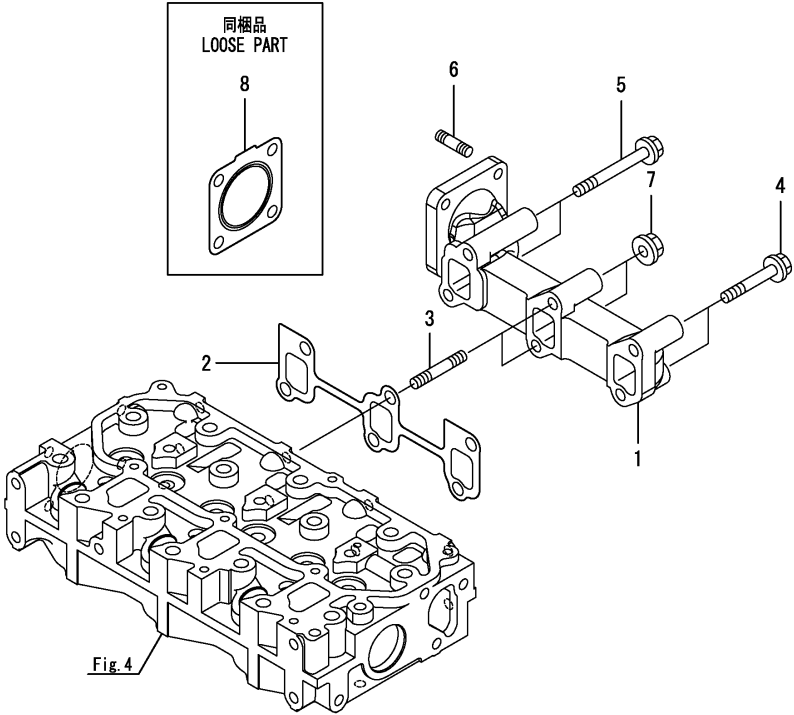
No.	Lev.	Parts No.	Description	Q'ty						I	R
				(A)	(B)	(C)	(D)	(E)	(F)		
1	1	129901-11450	PROTECTOR, NOZZLE	3							
2	1	119600-11460	GASKET, NOZZLE	6							
3	1	105010-11490	CAP, VALVE	6							
4	1	119E10-11740	HEAD ASSY, CYLINDER	1							
11	2	119285-11990	PLUG, CUP TYPE 35	2							
12	2	23876-005000	PLUG, R005	1							
13	2	119E10-11100	VALVE, SUCTION	3							
14	2	119E10-11110	VALVE, EXHAUST	3							
15	2	119717-11131	SPRING, VALVE	6							
16	2	129508-11180	RETAINER, SPRING	6							
17	2	119717-11190	COTTER, VALVE	12							
18	2	119717-11340	SEAL, VALVE STEM	3							
19	2	119717-11350	SEAL, VALVE STEM	3							
20	1	22351-060012	PIN, SPRING 6.0X12	2							
21	1	119717-11200	SUPPORT ASSY, ROCKER	1							
22	2	119717-11240	SHAFT ASSY, ROCKER	1							
25	2	119717-11260	SUPPORT, ROCKER ARM	3							
26	2	119620-11280	SPRING, ROCKER	2							
27	2	119717-11650	ARM ASSY, ROCKER	6							
28	3	129150-11230	SCREW, VALVE ADJUST	6							
30	3	129150-11750	NUT, M8	6							
31	2	22242-000120	RING, 12	2							
32	2	26979-050162	SCREW, M5X16	1							
33	1	26106-080402	BOLT, M8X 40 PLATED	3							
34	1	124160-01751	CAP, FILLER	1							
35	1	119717-11381	BONNET ASSY, HEAD	1							
36	2	119717-03031	PLATE, BAFFLE	1							
37	3	119717-03070	BAFFLE, BREATHER	1							
38	2	119717-03070	BAFFLE, BREATHER	2							
39	2	119802-03100	DIAPHRAGM ASSY	1							
40	3	119802-03110	PLATE, DIAPHRAGM	1							
41	3	119802-03121	COVER, DIAPHRAGM	1							
42	3	119802-03131	DIAPHRAGM	1							
43	3	119802-03141	SPRING, DIAPHRAGM	1							
45	2	119718-11310	GASKET, BONNET	1							
46	2	119717-11320	COVER, BONNET	1							
47	2	119717-11331	GASKET	1							
48	2	22857-500100	SCREW, 5X10	4							
49	2	22857-500100	SCREW, 5X10	4							
50	2	22857-500160	SCREW, 5X16	2							
51	1	24311-000320	O-RING, 1AP32.0	1							
52	1	26106-060202	BOLT, M6X 20 PLATED	3							
53	1	26106-060752	BOLT, M6X 75 PLATED	6							
54	1	119626-07900	LIFTER, ENGINE	1							
55	1	129900-07900	LIFTER, ENGINE	1							
56	1	26106-080142	BOLT, M8X 14 PLATED	2							
57	1	26106-080162	BOLT, M8X 16 PLATED	2							
58	1	119717-77801	PLUG, GLOW	3							
59	1	119717-77820	CONNECTOR, GLOW PLUG	1							
60	1	119717-11800	GUIDE, VALVE	6							

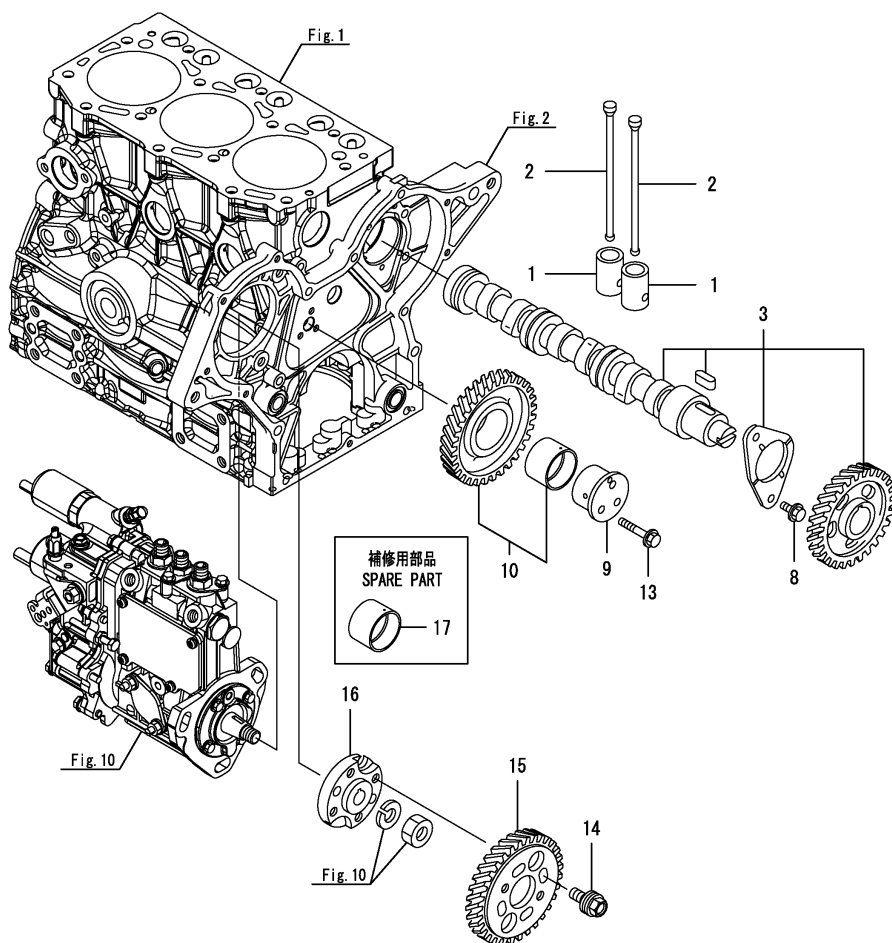
Fig.5. EXHAUST MANIFOLD

(A)=3TNV80F-SNHB
(B)=
(C)=

(D)=
(E)=
(F)=

No.	Lev.	Parts No.	Description	Q'ty						I	R
				(A)	(B)	(C)	(D)	(E)	(F)		
1	1	119740-13100	MANIFOLD, EXHAUST	1							
2	1	119717-13110	GASKET, EXH.MANIFOLD	1							
3	1	119717-13600	BOLT, STUD M8X50	2							
4	1	119802-13620	BOLT, M8X50	2							
4-1	1	129E00-13610	BOLT, M8X50 10.9	2							N
(A=E04041)											
5	1	123900-13620	BOLT, M8X71	2							
5-1	1	129E00-13630	BOLT, M8X71 10.9T	2							N
(A=E04041)											
6	1	119131-18320	BOLT, STUD M8X22	4							
7	1	26306-080002	NUT, M8	2							
8	1	119515-13200	GASKET, SILENCER	1							

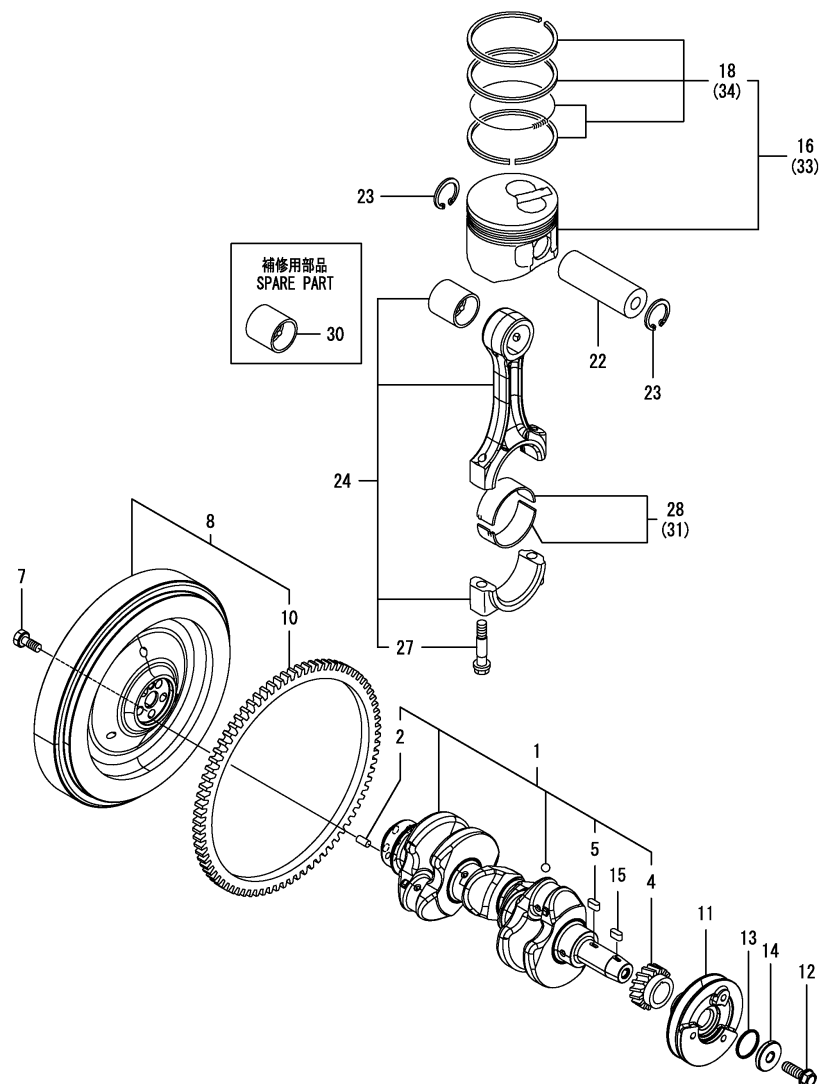




No.	Lev.	Parts No.	Description	Q'ty						I	R
				(A)	(B)	(C)	(D)	(E)	(F)		
1	1	119620-14200	TAPPET	6							
2	1	119717-14400	PUSH-ROD	6							
3	1	119717-14581	CAMSHAFT ASSY	1							
8	1	26106-060122	BOLT, M6X 12 PLATED	2							
9	1	119717-25050	SHAFT, IDLE	1							
10	1	119717-25101	GEAR ASSY, IDLE	1							
13	1	26106-060352	BOLT, M6X 35 PLATED	3							
14	1	129150-25301	BOLT	4							
15	1	119717-25930	GEAR, PUMP	1							
16	1	119717-51150	FLANGE	1							
17	1	119717-25911	BUSH, IDLE GEAR	1							1

Remarks
(1) Spare parts.

N:Old $\xrightarrow[\text{No}]{\text{Yes}}$ New, Q:Old $\xrightarrow[\text{Yes}]{\text{No}}$ New, R:Old $\xrightarrow[\text{Yes}]{\text{No}}$ New, S:Old $\xrightarrow[\text{No}]{\text{Yes}}$ New, W:Add, Z:Discontinued, F:Interchangeable by set, K:Q'ty Change
Copyright (C) 2014 YANMAR GLOBAL CS CO., LTD. All Rights Reserved.



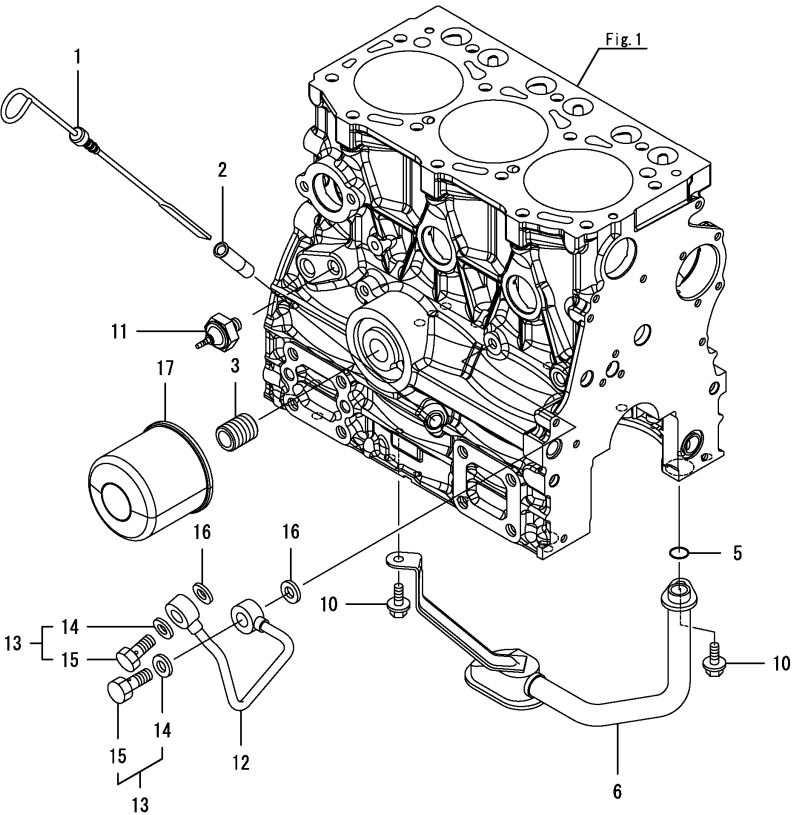
No.	Lev.	Parts No.	Description	Q'ty						I	R
				(A)	(B)	(C)	(D)	(E)	(F)		
1	1	119E10-21700	CRANKSHAFT ASSY	1							
2	2	129100-01580	PIN, PARALLEL 8X16	1							
4	2	119717-21200	GEAR, CRANKSHAFT	1							
5	2	22512-040120	KEY, 4X 12	1							
7	1	121111-21501	BOLT, FLYWHEEL	5							
8	1	119E10-21590	FLYWHEEL ASSY	1							
10	2	119865-21600	GEAR, RING Z=116	1							
11	1	119C10-21650	V-PULLEY, CRANKSHAFT	1							
12	1	119621-21681	BOLT, FLANGE 12X1.25	1							
13	1	119C10-21930	GASKET, WASHER	1							
14	1	119C10-21940	WASHER, V-PULLEY	1							
15	1	22512-040120	KEY, 4X 12	1							
16	1	119E10-22080	PISTON ASSY	3							
18	2	119E10-22500	RING ASSY	3							
22	1	119E10-22300	PIN, PISTON	3							
23	1	22252-000220	RING, 22	6							
24	1	119E10-23000	ROD ASSY, CONNECTING	3							
27	2	119717-23200	BOLT, CONNECTING ROD	6							
28	1	119717-23601	BEARING, CRANK PIN	3							
30	1	119717-23910	BEARING, PISTON PIN	3							1
31	1	119717-23611	METAL ASSY, 0.25	3							2
33	1	119E10-22900	PISTON ASSY, 0.25 OS	3							3
34	2	119E10-22550	RING ASSY, 0.25	3							3

Remarks
(1) Spare parts.
(2) Under-sized (U.S.=0.25) parts.
(3) Over-sized (O.S.=0.25) parts.

N:Old $\xrightarrow[\text{No}]{\text{Yes}}$ New, Q:Old $\xrightarrow[\text{Yes}]{\text{No}}$ New, R:Old $\xrightarrow[\text{Yes}]{\text{Yes}}$ New, S:Old $\xrightarrow[\text{No}]{\text{No}}$ New, W:Add, Z:Discontinued, F:Interchangeable by set, K:Q'ty Change
Copyright (C) 2014 YANMAR GLOBAL CS CO., LTD. All Rights Reserved.

(A)=3TNV80F-SNHB
(B)=
(C)=

(D)=
(E)=
(F)=



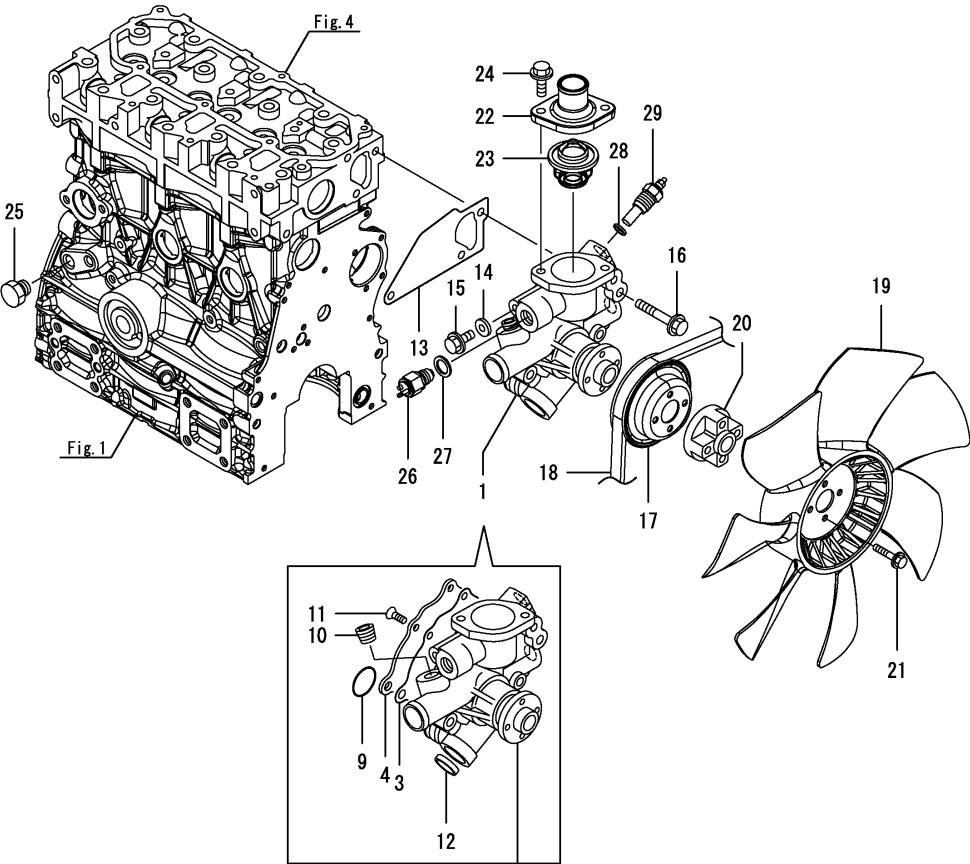
No.	Lev.	Parts No.	Description	Q'ty						I	R
				(A)	(B)	(C)	(D)	(E)	(F)		
1	1	119717-34801	DIPSTICK	1							
2	1	121520-34810	GUIDE, DIPSTICK	1							
3	1	119717-35140	BOLT, STUD	1							
5	1	119717-32060	O-RING, P15.0	1							
6	1	119717-35080	PIPE ASSY, OIL INLET	1							
10	1	26106-060102	BOLT, M6X 10 PLATED	2							
11	1	114250-39450	SWITCH, HYDRAULIC	1							
12	1	119717-39210	PIPE, OIL	1							
13	1	129005-59830	BOLT ASSY, JOINT M8	2							
14	2	22190-080002	WASHER, SEAL 8	2							
15	2	23857-030000	BOLT, JOINT 3	2							
16	1	22190-080002	WASHER, SEAL 8	2							
17	1	119305-35151	FILTER ASSY, D68XL65	1							1

Remarks
(1)Spare parts.

Fig.9. COOLING WATER SYSTEM

(A)=3TNV80F-SNHB
(B)=
(C)=

(D)=
(E)=
(F)=

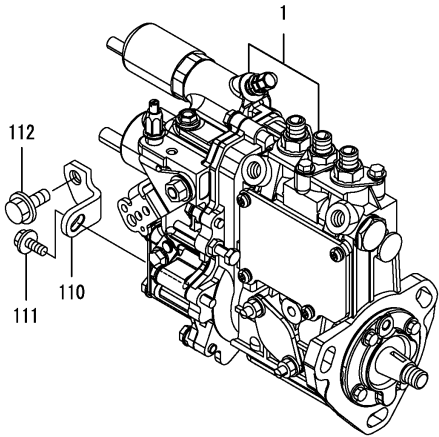


No.	Lev.	Parts No.	Description	Q'ty						I	R
				(A)	(B)	(C)	(D)	(E)	(F)		
1	1	119E10-42000	PUMP ASSY, WATER	1							
3	2	119717-42031	GASKET	1							
4	2	119717-42041	COVER	1							
9	2	119C10-42320	O-RING, 2028	1							
10	2	129916-49740	PLUG, R3/8	1							
11	2	26577-060122	SCREW, M6X12	4							
12	2	27241-250000	PLUG, 25	1							
13	1	119717-42020	GASKET, WATER PUMP	1							
14	1	23414-080000	GASKET, 8X1.0	1							
15	1	26106-080122	BOLT, M8X 12 PLATED	1							
16	1	26106-080502	BOLT, M8X 50 PLATED	3							
17	1	119740-42350	V-PULLEY, D=90	1							
18	1	119740-42370	V-BELT, A35.5	1							
19	1	119717-44740	FAN, COOLING D335X7	1							
20	1	121267-44760	SPACER, FAN	1							
21	1	26106-060302	BOLT, M6X 30 PLATED	4							
22	1	129350-49530	COVER, THERMOSTAT	1							
23	1	119740-49800	THERMOSTAT, 71	1							
24	1	26106-080202	BOLT, M8X 20 PLATED	2							
25	1	171056-49120	PLUG, DRAIN R1/4	1							
26	1	121250-44901	SWITCH, THERMO 110	1							
27	1	124465-44950	GASKET, 16	1							
28	1	129150-49360	GASKET	1							
29	1	129242-49450	SENSOR, WATER TEMP.	1							

(A)=3TNV80F-SNHB
(B)=
(C)=

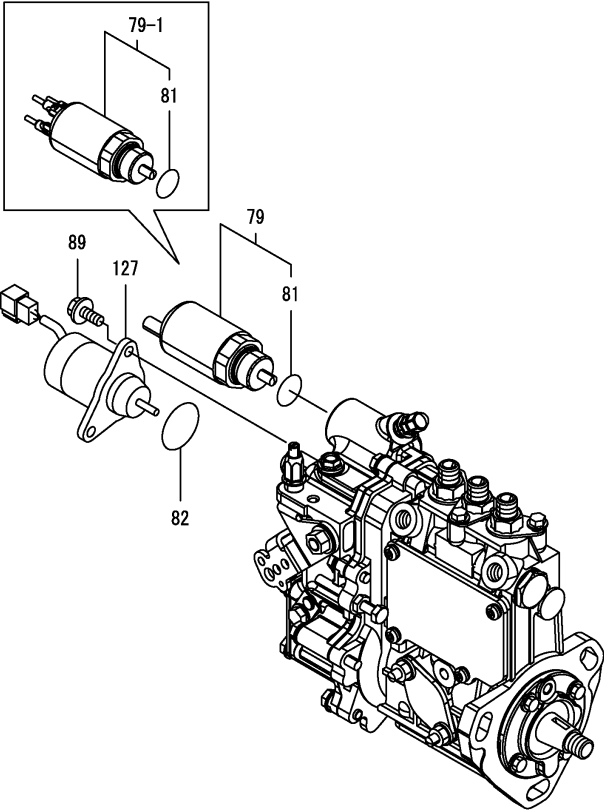
(D)=
(E)=
(F)=

No.	Lev.	Parts No.	Description	Q'ty						I	R
				(A)	(B)	(C)	(D)	(E)	(F)		
1	1	719E40-51350	FIE ASSY	1							1
110	1	119C10-51250	SUPPORT, FUEL PUMP	1							
110-1	1	119E10-51250	SUPPORT	1							N
(A=E16417)											
111	1	26106-060142	BOLT, M6X 14 PLATED	1							
111-1	1	26106-060162	BOLT, M6X 16 PLATED	1							N
(A=E16417)											
112	1	26106-080142	BOLT, M8X 14 PLATED	1							
112-1	1	26106-080162	BOLT, M8X 16 PLATED	1							N
(A=E16417)											



Remarks
(1)Governor(Fig.11) is incorporated in this Fuel Injection Pump(No.1).

Fig.11. GOVERNOR



(A)=3TNV80F-SNHB
(B)=
(C)=

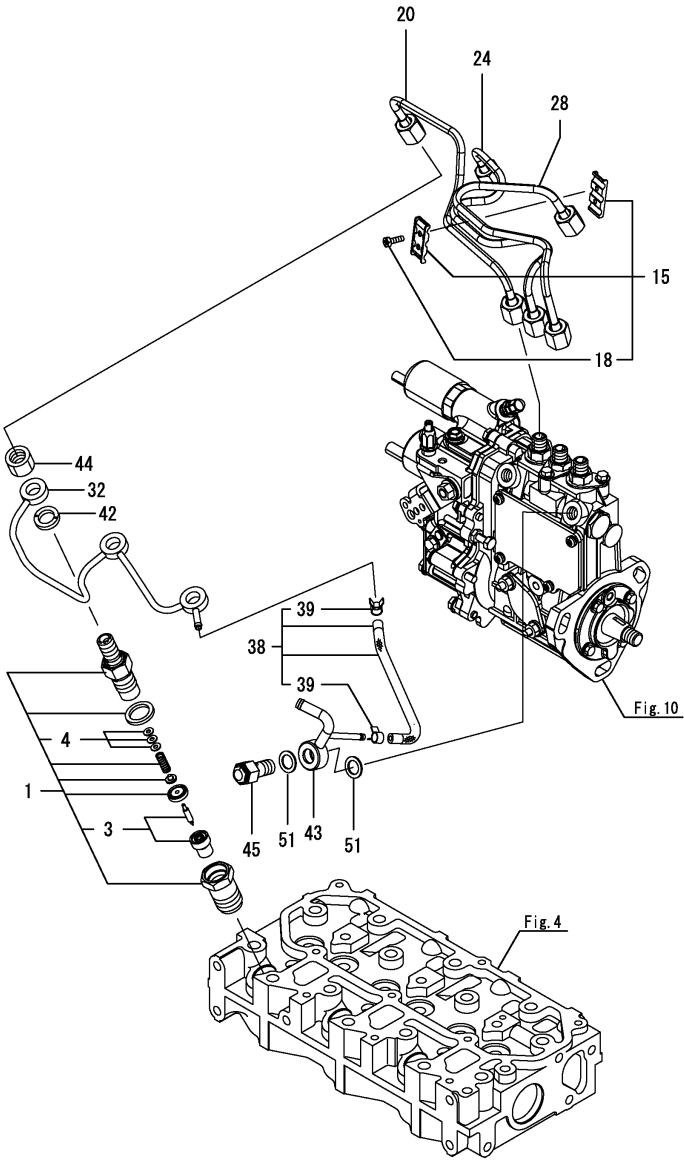
(D)=
(E)=
(F)=

No.	Lev.	Parts No.	Description	Q'ty						I	R
				(A)	(B)	(C)	(D)	(E)	(F)		
79	2	119C00-61900	SOLENOID, CONTROL	1							
79-1	2	119C00-61901	SOLENOID, POWER CONT	1							R
(A=E36257)											
81	3	24357-240200	PACKING, 24020	1							
82	2	158552-61900	O-RING	1							
89	2	26106-060142	BOLT, M6X 14 PLATED	2							
127	2	119233-77932	SOLENOID, STOP	1							

Remarks
* This figure(Governor) is incorporated in the Fuel Injection Pump(Fig.10).

(A)=3TNV80F-SNHB
(B)=
(C)=

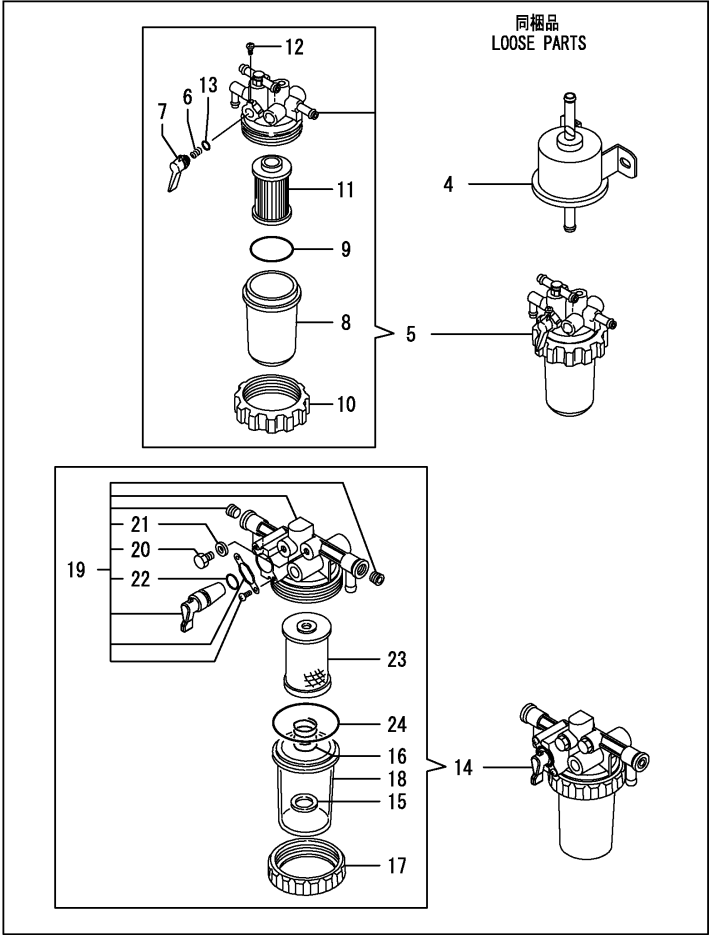
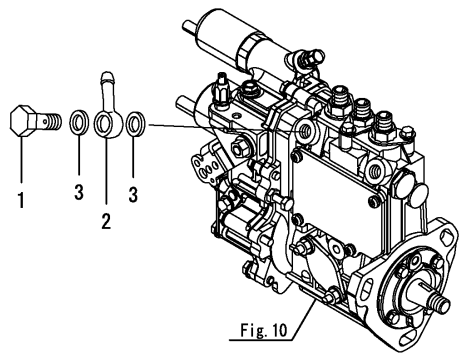
(D)=
(E)=
(F)=



No.	Lev.	Parts No.	Description	Q'ty						I	R
				(A)	(B)	(C)	(D)	(E)	(F)		
1	1	119C10-53000	NOZZLE ASSY, F.I.	3							
3	2	119C10-53010	NOZZLE ASSY	3							
4	2	129901-53800	SHIM SET, ADJUSTING	3							1
15	1	129150-59120	RETAINER, PIPE	1							
18	2	129150-59131	BOLT, M4X14	2							
20	1	119E10-59810	PIPE ASSY,INJ.NO1	1							
24	1	119E10-59820	PIPE ASSY,INJ.NO2	1							
28	1	119E10-59830	PIPE ASSY,INJ.NO3	1							
32	1	119717-59510	PIPE ASSY, RETURN	1							
38	1	119744-59560	HOSE ASSY, RETURN	1							
39	2	124066-59100	CLAMP, HOSE 8	2							
42	1	129901-59560	GASKET	3							
43	1	119515-59581	JOINT, OVER FLOW	1							
44	1	119620-59700	NUT, NOZZLE	3							
45	1	119813-59950	VALVE ASSY, CHECK	1							
51	1	22190-120002	WASHER, SEAL 12	2							

Remarks
(1)Spare parts.

Fig.13. FUEL FILTER



(A)=3TNV80F-SNHB
(B)=
(C)=

(D)=
(E)=
(F)=

No.	Lev.	Parts No.	Description	Q'ty						I	R
				(A)	(B)	(C)	(D)	(E)	(F)		
1	1	103854-39140	BOLT, PIPE JOINT	1							
2	1	101304-59020	JOINT, PIPE 12	1							
3	1	22190-120002	WASHER, SEAL 12	2							
4	1	129612-52100	PUMP, FUEL FEED	1							
5	1	119740-55601	STRAINER ASSY	1							
6	2	104200-55330	SPRING, FUEL VALVE	1							
7	2	119810-55340	LEVER, FUEL	1							
8	2	121254-55510	CUP, FUEL STARINER	1							
9	2	102103-55520	O-RING	1							
10	2	110250-55610	RING, CUP RETAINING	1							
11	2	119810-55650	ELEMENT	1							
12	2	104200-55750	SCREW, PAN M4	1							
13	2	24311-240100	O-RING, 1AP10A	1							
14	1	129335-55750	SEPARATOR ASSY,WATER	1							
15	2	129053-55640	FLOAT	1							
16	2	129053-55650	SPRING, SCREEN	1							
17	2	119833-55660	RING, RETAINING	1							
18	2	129335-55740	CUP	1							
19	2	129335-55770	BODY ASSY	1							
20	3	129242-55750	VALVE, AIR VENT	1							
21	3	129242-55760	GASKET, PLUG	1							
22	3	24311-000110	O-RING, 1AP11.0	1							
23	2	129335-55780	ELEMENT ASSY	1							
24	2	24311-000440	O-RING, 1AP44.0	1							

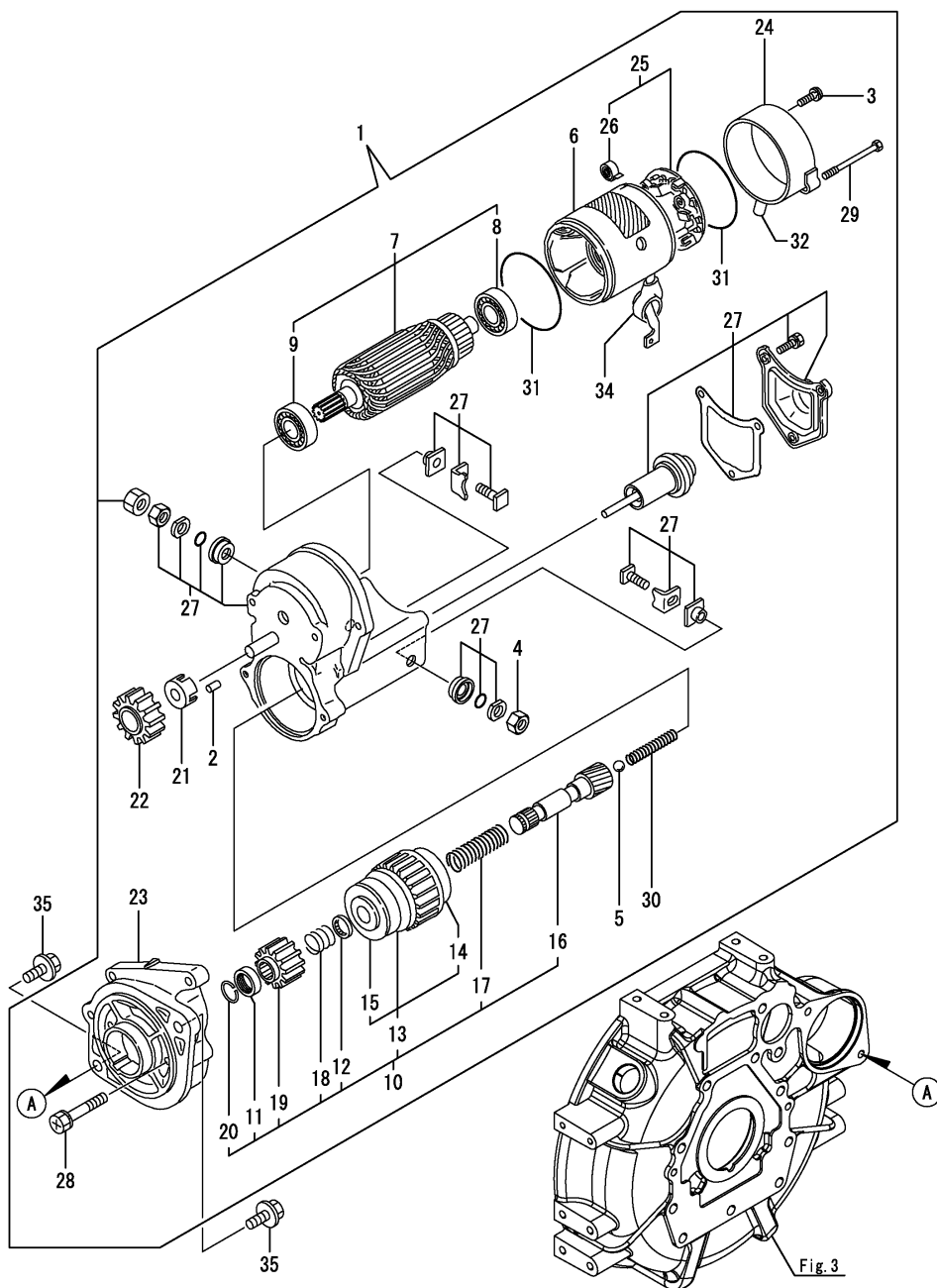


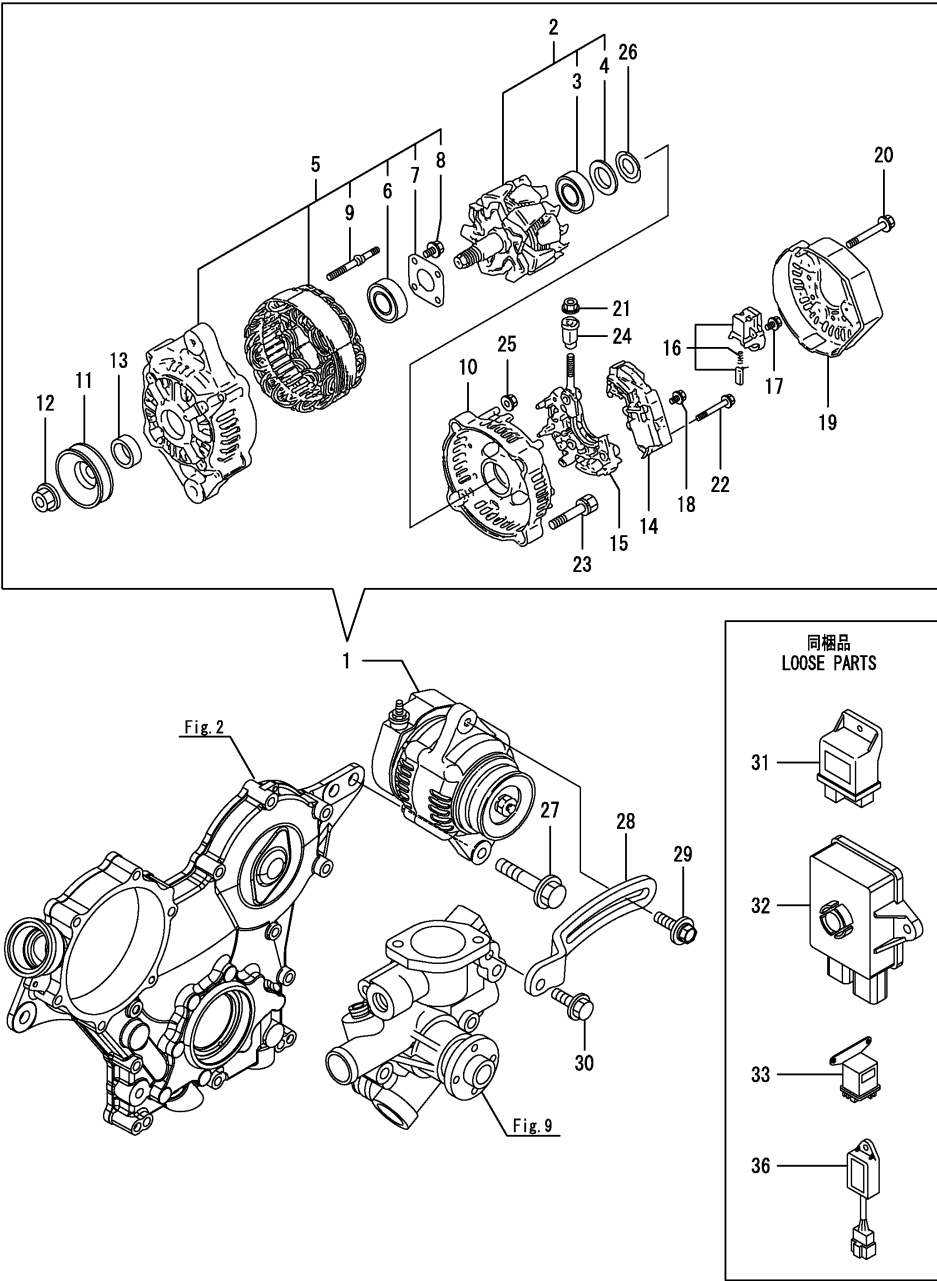
Fig. 3

No.	Lev.	Parts No.	Description	Qty						I	R
				(A)	(B)	(C)	(D)	(E)	(F)		
1	1	119740-77020	STARTER	1							
2	2	X0283060061	ROLLER	5							
3	2	129129-77460	SCREW	2							
4	2	X9490561370	NUT	1							
5	2	X9491200240	BALL, STEEL	1							
6	2	129407-77210	YOKE ASSY	1							
7	2	129407-77220	ARMATURE ASSY	1							
8	3	129129-77230	BEARING, BALL	1							
9	3	129129-77240	BEARING, BALL	1							
10	2	X1280996680	STARTER KIT	1							
11	3	X0280210230	NUT	1							
12	3	X0283270140	RETAINER	1							
13	3	129129-77390	CLUTCH ASSY	1							
14	4	129129-77440	BEARING, BALL	1							
15	4	129129-77450	BEARING, BALL	1							
16	3	129129-77400	SHAFT, STATER	1							
17	3	129129-77410	SPRING	1							
18	3	129407-77410	SPRING	1							
19	3	X0283712350	PINION, STARTER	1							
20	3	129129-77430	RING, SNAP	1							
21	2	129129-77260	RETAINER	1							
22	2	129129-77270	PINION	1							
23	2	X4284003310	HOUSING	1							
24	2	129407-77290	COVER	1							
25	2	129407-77300	HOLDER ASSY	1							
26	3	X9491730461	SPRING	4							
27	2	X1534004151	SWITCH ASSY	1							
28	2	129129-77320	BOLT	2							
29	2	129407-77330	BOLT	2							
30	2	129129-77340	SPRING	1							
31	2	129129-77350	O-RING	2							
32	2	129129-77362	COVER	1							
34	2	129129-77380	CAP	1							
35	1	26106-100252	BOLT, M10X 25 PLATED	2							

Fig.15. GENERATOR

(A)=3TNV80F-SNHB
(B)=
(C)=

(D)=
(E)=
(F)=

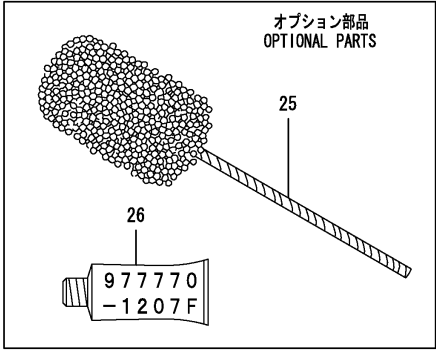
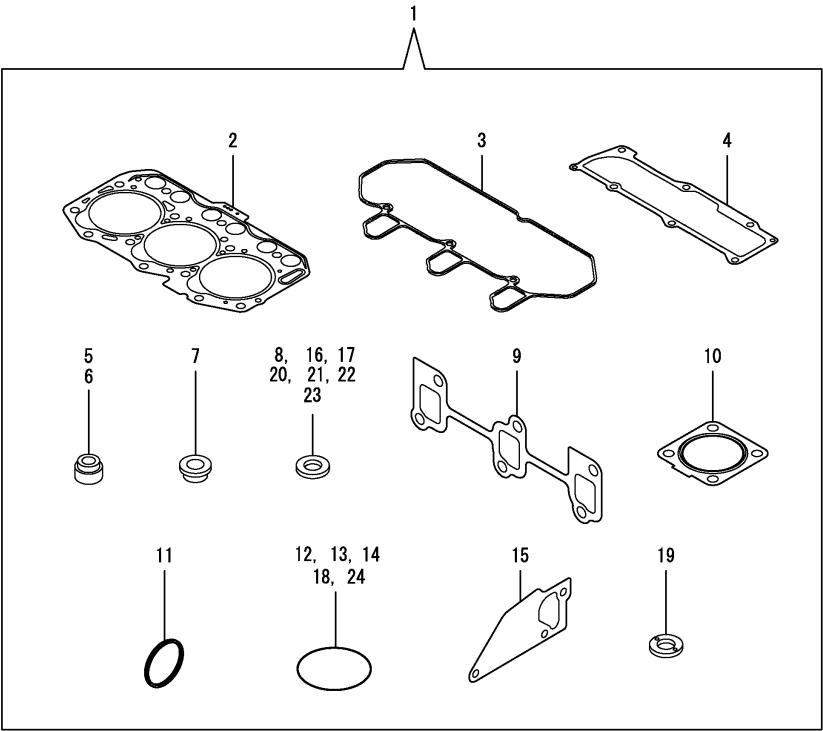


No.	Lev.	Parts No.	Description	Q'ty						I	R
				(A)	(B)	(C)	(D)	(E)	(F)		
1	1	129240-77200	ALTERNATOR, 12V-40A	1							
2	2	119620-77380	ROTOR ASSY	1							
3	3	123501-79240	BEARING, BALL	1							
4	3	119620-79250	COVER, BEARING	1							
5	2	119620-77421	FRAME ASSY,GENERATOR	1							
6	3	119620-79200	BEARING, BALL	1							
7	3	119620-79210	RETAINER	1							
8	3	119620-79220	SCREW	4							
9	3	119620-79230	BOLT, STUD	2							
10	2	119620-77440	FRAME ASSY	1							
11	2	119620-77461	PULLEY, GENERATOR	1							
12	2	119620-77471	NUT	1							
13	2	119620-77490	COLLAR	1							
14	2	129240-77710	REGULATOR ASSY	1							
15	2	119620-79260	HOLDER	1							
16	2	129052-79270	HOLDER, BRUSH	1							
17	2	119620-79290	SCREW	6							
18	2	119620-79300	SCREW	1							
19	2	129240-79300	COVER	1							
20	2	119620-79310	BOLT	3							
21	2	129240-79310	NUT	1							
22	2	119620-79320	SCREW	2							
23	2	119620-79330	BOLT	2							
24	2	119620-79340	BUSH, INSULATION	1							
25	2	119620-79350	NUT	2							
26	2	119620-79360	WASHER, THRUST	1							
27	1	26106-100502	BOLT, M10X 50 PLATED	1							
28	1	119717-77330	ADJUSTER	1							
29	1	119810-77340	BOLT, ADJUST L=30	1							
30	1	26106-080202	BOLT, M8X 20 PLATED	1							
31	1	119802-77200	RELAY, SAFETY	1							
32	1	119C10-77600	DRIVER	1							
33	1	119650-77911	RELAY ASSY, GLOW	1							
36	1	129211-77920	TIMER	2							

Fig.16. GASKET SET

(A)=3TNV80F-SNHB
(B)=
(C)=

(D)=
(E)=
(F)=



No.	Lev.	Parts No.	Description	Q'ty						I	R
				(A)	(B)	(C)	(D)	(E)	(F)		
1	1	719E21-92601	GASKET KIT	1							1
2	2	119E10-01330	GASKET SET, HEAD	1							
3	2	119718-11310	GASKET, BONNET	1							
4	2	119717-11331	GASKET	1							
5	2	119717-11340	SEAL, VALVE STEM	3							
6	2	119717-11350	SEAL, VALVE STEM	3							
7	2	129901-11450	PROTECTOR, NOZZLE	3							
8	2	119600-11460	GASKET, NOZZLE	6							
9	2	119717-13110	GASKET, EXH.MANIFOLD	1							
10	2	119515-13200	GASKET, SILENCER	1							
11	2	119C10-21930	GASKET, WASHER	1							
12	2	119624-32040	O-RING, P12.0	1							
13	2	119717-32050	O-RING, P17.0	3							
14	2	119717-32060	O-RING, P15.0	1							
15	2	119717-42020	GASKET, WATER PUMP	1							
16	2	124465-44950	GASKET, 16	1							
17	2	129150-49360	GASKET	1							
18	2	121850-51960	O-RING	1							
19	2	129901-59560	GASKET	3							
20	2	22190-080002	WASHER, SEAL 8	4							
21	2	22190-120002	WASHER, SEAL 12	4							
22	2	22190-160002	WASHER, SEAL 16	1							
23	2	23414-080000	GASKET, 8X1.0	1							
24	2	24311-000320	O-RING, 1AP32.0	2							
25	1	129400-92420	HONE, FLEX	1							1
26	1	977770-1207F	GASKET.LIQUID	1							1

Remarks
(1)Optional parts.

Parts No. Index

Parts No.	Fig. No.	Ref. No.
101304-59020	13	2
102103-55520	13	9
103854-39140	13	1
104200-55330	13	6
104200-55750	13	12
105010-11490	4	3
105311-01090	1	4
105425-01690	3	9
110250-55610	13	10
114250-39450	8	11
119131-18320	5	6
119233-77932	11	127
119285-01990	1	6
119285-11990	4	11
119305-35151	8	17
119515-13200	5	8
	16	10
119515-59581	12	43
119600-11460	4	2
	16	8
119620-01750	3	3
119620-02020	1	7
119620-11280	4	26
119620-14200	6	1
119620-59700	12	44
119620-77380	15	2
119620-77421	15	5
119620-77440	15	10
119620-77461	15	11
119620-77471	15	12
119620-77490	15	13
119620-79200	15	6
119620-79210	15	7
119620-79220	15	8
119620-79230	15	9
119620-79250	15	4
119620-79260	15	15
119620-79290	15	17
119620-79300	15	18
119620-79310	15	20
119620-79320	15	22
119620-79330	15	23
119620-79340	15	24
119620-79350	15	25
119620-79360	15	26
119621-21681	7	12
119623-01250	1	5
119624-32040	2	18
	16	12
119626-07900	4	54

Parts No.	Fig. No.	Ref. No.
119650-77911	15	33
119660-01911	2	17
119717-01501	2	1
119717-01521	2	5
119717-01570	2	2
119717-01601	3	2
119717-01720	3	7
119717-01750	2	16
119717-01800	2	7
119717-02411	1	10
119717-02930	1	23
119717-03031	4	36
119717-03070	4	37
		38
119717-11131	4	15
119717-11190	4	17
119717-11200	4	21
119717-11240	4	22
119717-11260	4	25
119717-11320	4	46
119717-11331	4	47
	16	4
119717-11340	4	18
	16	5
119717-11350	4	19
	16	6
119717-11381	4	35
119717-11650	4	27
119717-11800	4	60
119717-13110	5	2
	16	9
119717-13600	5	3
119717-14400	6	2
119717-14581	6	3
119717-21200	7	4
119717-23200	7	27
119717-23601	7	28
119717-23611	7	31
119717-23910	7	30
119717-25050	6	9
119717-25101	6	10
119717-25911	6	17
119717-25930	6	15
119717-32050	2	19
	16	13
119717-32060	8	5
	16	14
119717-32080	2	9
119717-32100	2	8
119717-32110	2	13

Parts No.	Fig. No.	Ref. No.
119717-32120	2	14
119717-34801	8	1
119717-35080	8	6
119717-35140	8	3
119717-39210	8	12
119717-42020	9	13
	16	15
119717-42031	9	3
119717-42041	9	4
119717-44740	9	19
119717-51150	6	16
119717-59510	12	32
119717-77330	15	28
119717-77801	4	58
119717-77820	4	59
119718-11310	4	45
	16	3
119734-01590	2	3
119734-02220	3	4
119740-01770	3	8
119740-13100	5	1
119740-42350	9	17
119740-42370	9	18
119740-49800	9	23
119740-55601	13	5
119740-77020	14	1
119744-59560	12	38
119802-03100	4	39
119802-03110	4	40
119802-03121	4	41
119802-03131	4	42
119802-03141	4	43
119802-13620	5	4
119802-32130	2	15
119802-77200	15	31
119810-01200	1	26
119810-02941	1	34
119810-55340	13	7
119810-55650	13	11
119810-77340	15	29
119813-59950	12	45
119833-55660	13	17
119865-21600	7	10
119C00-61900	11	79
119C00-61901	11	79 -1
119C10-21650	7	11
119C10-21930	7	13
	16	11
119C10-21940	7	14
119C10-42320	9	9

Parts No.	Fig. No.	Ref. No.
119C10-51250	10	110
119C10-53000	12	1
119C10-53010	12	3
119C10-77600	15	32
119E00-01560	1	1
119E10-01330	1	27
	16	2
119E10-11100	4	13
119E10-11110	4	14
119E10-11740	4	4
119E10-21590	7	8
119E10-21700	7	1
119E10-22080	7	16
119E10-22300	7	22
119E10-22500	7	18
119E10-22550	7	34
119E10-22900	7	33
119E10-23000	7	24
119E10-42000	9	1
119E10-51250	10	110 -1
119E10-59810	12	20
119E10-59820	12	24
119E10-59830	12	28
121111-21501	7	7
121250-44901	9	26
121254-55510	13	8
121267-44760	9	20
121520-34810	8	2
121850-51960	2	20
	16	18
123501-79240	15	3
123900-13620	5	5
124060-01050	1	11
124066-59100	12	39
124160-01751	2	28
	4	34
124160-01910	1	12
124465-44950	9	27
	16	16
129001-32320	2	11
129001-32330	2	12
129005-59830	8	13
129052-79270	15	16
129053-55640	13	15
129053-55650	13	16
129100-01580	3	1
	7	2
129129-77230	14	8
129129-77240	14	9
129129-77260	14	21

Parts No. Index

Parts No.	Fig. No.	Ref. No.
129129-77270	14	22
129129-77320	14	28
129129-77340	14	30
129129-77350	14	31
129129-77362	14	32
129129-77380	14	34
129129-77390	14	13
129129-77400	14	16
129129-77410	14	17
129129-77430	14	20
129129-77440	14	14
129129-77450	14	15
129129-77460	14	3
129150-11230	4	28
129150-11750	4	30
129150-25301	6	14
129150-49360	9	28
	16	17
129150-59120	12	15
129150-59131	12	18
129211-77920	15	36
129240-77200	15	1
129240-77710	15	14
129240-79300	15	19
129240-79310	15	21
129242-49450	9	29
129242-55750	13	20
129242-55760	13	21
129335-55740	13	18
129335-55750	13	14
129335-55770	13	19
129335-55780	13	23
129350-49530	9	22
129400-92420	16	25
129407-77210	14	6
129407-77220	14	7
129407-77290	14	24
129407-77300	14	25
129407-77330	14	29
129407-77410	14	18
129508-11180	4	16
129612-52100	13	4
129900-07900	4	55
129900-32130	2	10
129901-11450	4	1
	16	7
129901-53800	12	4
129901-59560	12	42
	16	19
129916-49740	9	10

Parts No.	Fig. No.	Ref. No.
129E00-13610	5	4 -1
129E00-13630	5	5 -1
158552-61900	11	82
171056-49120	9	25
22190-080002	8	14
		16
	16	20
22190-120002	12	51
	13	3
	16	21
22190-160002	3	11
	16	22
22242-000120	4	31
22252-000220	7	23
22351-060012	4	20
22512-040120	7	5
		15
22857-500100	4	48
		49
22857-500160	4	50
23414-080000	9	14
	16	23
23857-030000	8	15
23876-005000	4	12
23876-030000	2	6
24311-000110	13	22
24311-000320	2	29
	4	51
	16	24
24311-000440	13	24
24311-240100	13	13
24357-240200	11	81
26106-060102	8	10
26106-060122	2	21
	6	8
26106-060142	10	111
	11	89
26106-060162	2	22
	10	111 -1
26106-060202	4	52
26106-060302	9	21
26106-060352	6	13
26106-060402	2	23
		24
26106-060602	2	25
26106-060652	2	26
26106-060752	4	53
26106-080122	3	12
	9	15
26106-080142	4	56

Parts No.	Fig. No.	Ref. No.
26106-080142	10	112
26106-080162	4	57
	10	112 -1
26106-080202	9	24
	15	30
26106-080302	3	13
26106-080402	4	33
26106-080452	3	14
26106-080502	3	15
	9	16
26106-100252	14	35
26106-100502	15	27
26206-100252	3	5
26206-100302	3	6
26306-080002	2	27
	5	7
26577-060122	9	11
26979-050162	4	32
27241-120000	1	13
27241-250000	9	12
719717-02901	1	28
719717-02911	1	31
719734-01500	2	4
719E21-92601	16	1
719E40-51350	10	1
977770-1207F	16	26
X0280210230	14	11
X0283060061	14	2
X0283270140	14	12
X0283712350	14	19
X1280996680	14	10
X1534004151	14	27
X4284003310	14	23
X9490561370	14	4
X9491200240	14	5
X9491730461	14	26

Parts No.	Fig. No.	Ref. No.
-----------	----------	----------