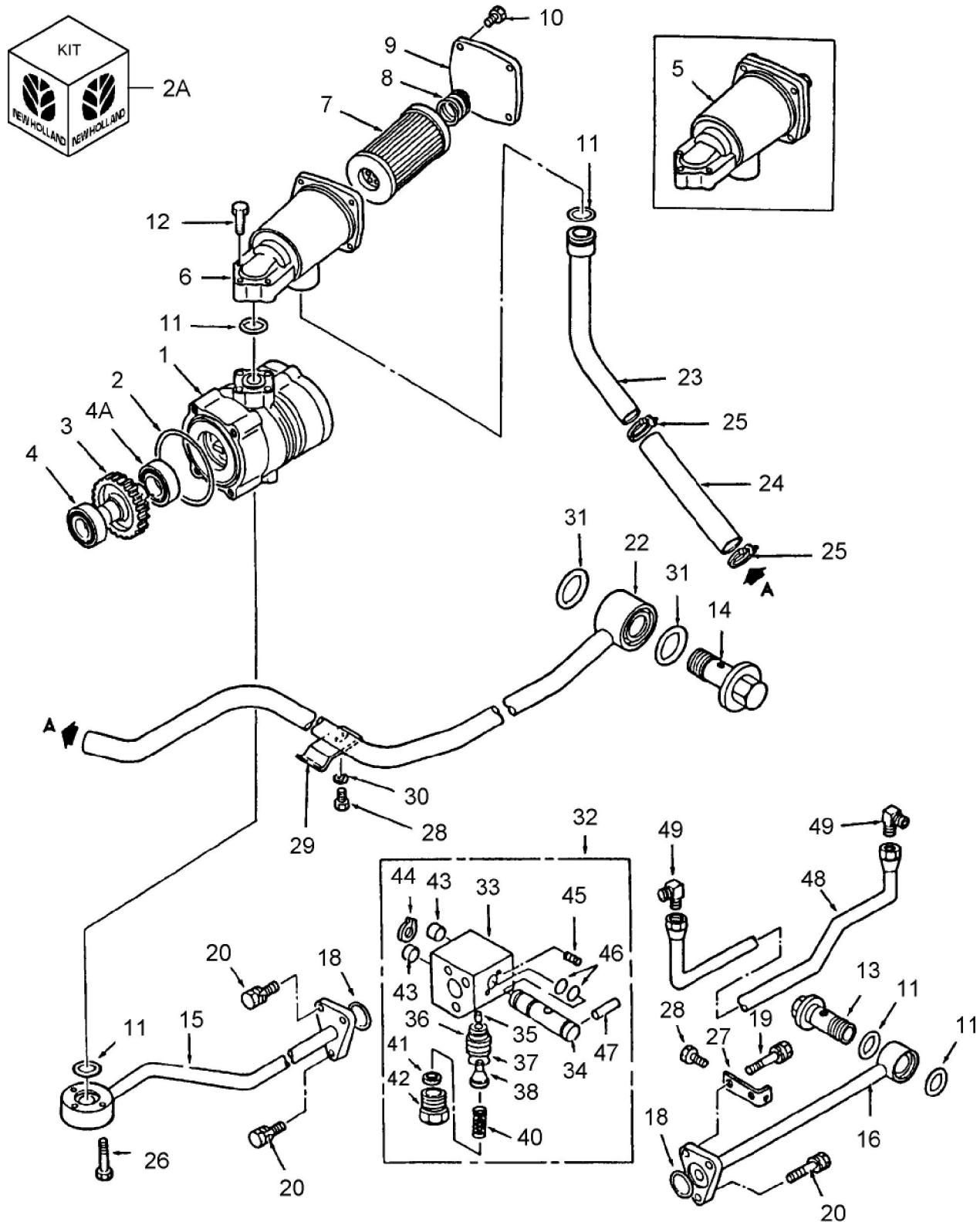


**1210 3 CYL COMPACT TRACTOR (1/83-12/86)**  
**10A02 HYDRAULIC PUMP & PIPING - 1210**

**1210 3 CYL COMPACT TRACTOR (1/83-12/86)****10A02 HYDRAULIC PUMP & PIPING - 1210**

Key	Qty	Part Number	Part Name	Description
1	1	SBA340450400	Pump, Small	Hydraulic System Pump Assy. Includes: Ref. 2 Thru 4, Start Year: 01/01/1983
2	1	SBA052310700	O-ring	O-ring, Start Year: 01/01/1983
2A	1	SBA340490165	Kit, Seals	Kit, Seal, Start Year: 01/01/1983
2B	1	SBA050203115	Seal, Oil	Seal, Oil, For Oil Pump, Not Shown On Art, Start Year: 01/01/1983
3	1	SBA340460130	Gear	Gear, Drive, Start Year: 01/01/1983
4	2	SBA040106004	Bearing, Ball	Bearing, Ball, Years: 01/01/1983-03/31/1984
4	1	SBA040106004	Bearing, Ball	Bearing, Ball, Us - Used On & Asn UC02249, Nh-e Used On & Asn UCE00338, Start Year: 04/01/1984
4A	1	44680	Bearing Assy	Bearing, 6004U, Us - Used On & Asn UC02249, Nh-e Used On & Asn UCE00338, Start Year: 04/01/1984
5	1	SBA340050050	Filter	Filter Assy. Includes: Ref. 6 Thru 10, Also Refer To Fig. 7M3, Start Year: 01/01/1983
6	1	SBA340750060	Housing	Coupling, Start Year: 01/01/1983
6A	1	SBA052400650	O-ring	O-ring, Not Shown On Art, ISM891416 Cork Gasket Is Pressed On So No Gasket Available. Use This O-ring., Start Year: 01/01/1983
7	1	SBA340500340	Filter	Filter, Hyd Pump, Start Year: 01/01/1983
8	1	SBA398212120	Spring	Spring, Start Year: 01/01/1983
9	1	SBA322200160	Cover	Cover, Start Year: 01/01/1983
10	4	86508568	Bolt	Bolt, Hex, M6 X 16, Cl 8.8, Full Thd, Start Year: 01/01/1983
11	5	SBA052100200	O-ring	O-ring, Start Year: 01/01/1983
12	3	SBA011140635	Bolt	Bolt, M6 X 35, Start Year: 01/01/1983
13	1	SBA398480240	Bolt, Banjo	Bolt, Banjo, 3/8", Start Year: 01/01/1983
14	1	SBA398480370	Bolt	Bolt, Eye, Start Year: 01/01/1983
15	1	SBA340604100	Tube, Hyd	Pipe Assy., Years: 01/01/1983-10/31/1983
15	1	SBA340604101	Tube, Rigid	Pipe Assy., Used On & Asn UC-01312, 1210, Start Year: 01/01/1983
16	1	SBA340604110	Tube, Rigid	Pipe Assy., Start Year: 01/01/1983
18	2	SBA052100200	O-ring	O-ring, P20, Start Year: 01/01/1983
19	1	N602550S36	Bolt	Screw, Hh, W/washer, Cl 8.8, M8 X 1.25 X 25, Manual, Start Year: 01/01/1983
19	2	N602550S36	Bolt	Screw, Hh, W/washer, Cl 8.8, M8 X 1.25 X 25, Hydrostatic Transmission, Start Year: 01/01/1983
20	5	SBA011510820	Screw, Captive Washer	Screw, Captive Washer, Hex, M8 X 1.25 X 20, G5, Manual, Start Year: 01/01/1983
20	4	SBA011510820	Screw, Captive Washer	Screw, Captive Washer, Hex, M8 X 1.25 X 20, G5, Hydrostatic Transmission, Start Year: 01/01/1983
22	1	SBA340604130	Tube, Rigid	Pipe Assy., Start Year: 01/01/1983
23	1	SBA340604140	Tube, Hyd	Pipe Assy., Start Year: 01/01/1983
24	1	SBA068209047	Tube, Rigid	Tube, Start Year: 01/01/1983
25	2	376091S	Clamp	Clamp, Start Year: 01/01/1983
26	3	SBA011140635	Bolt	Bolt, Start Year: 01/01/1983
27	1	SBA399111380	Clamp	Clamp, Start Year: 01/01/1983
28	2	SBA011510820	Screw, Captive Washer	Screw, Captive Washer, Hex, M8 X 20, G5, Start Year: 01/01/1983
29	1	SBA399111350	Clamp	Clamp, Start Year: 01/01/1983
30	1	86511315	Washer	Washer, M8 X 16 X 1.6, Start Year: 01/01/1983
31	2	SBA052400300	O-ring	O-ring, Start Year: 01/01/1983
32	1	SBA340011740	Valve, Control	Block, Manifold Diverter Includes: Ref. 33 Thru 47, Start Year: 01/01/1983
33	1	NS	Not Serviced	Body, Start Year: 01/01/1983

34	1	NS	Not Serviced	Valve, Start Year: 01/01/1983
35	1	SBA340293229	Plug	Plug, Start Year: 01/01/1983
36	1	SBA340293225	Housing	Valve, Start Year: 01/01/1983
37	1	SBA052400180	O-ring	O-ring, S18, Start Year: 01/01/1983
38	1	SBA340293226	Valve, Hydraulic	Valve, Start Year: 01/01/1983
40	1	SBA340293227	Spring	Spring, Start Year: 01/01/1983
41	1	SBA340293230	Kit	Kit, Shim, Start Year: 01/01/1983
42	1	SBA340293228	Cap	Cap, Spring, Start Year: 01/01/1983
43	2	SBA064409005	Plug	Plug, 3/8"-18, Nptf, Start Year: 01/01/1983
44	1	SBA036100013	Ring, Snap	Ring, Snap, Start Year: 01/01/1983
45	2	SBA030300310	Pin, Roll	Pin, Roll, Start Year: 01/01/1983
46	3	SBA052100100	O-ring	O-ring, Start Year: 01/01/1983
47	1	SBA030300220	Pin, Roll	Pin, Roll, Start Year: 01/01/1983
48	1	SBA340604370	Tube, Rigid	Pipe, Start Year: 01/01/1983
49	2	SBA340671080	Adapter	Adapter, Joint, Start Year: 01/01/1983