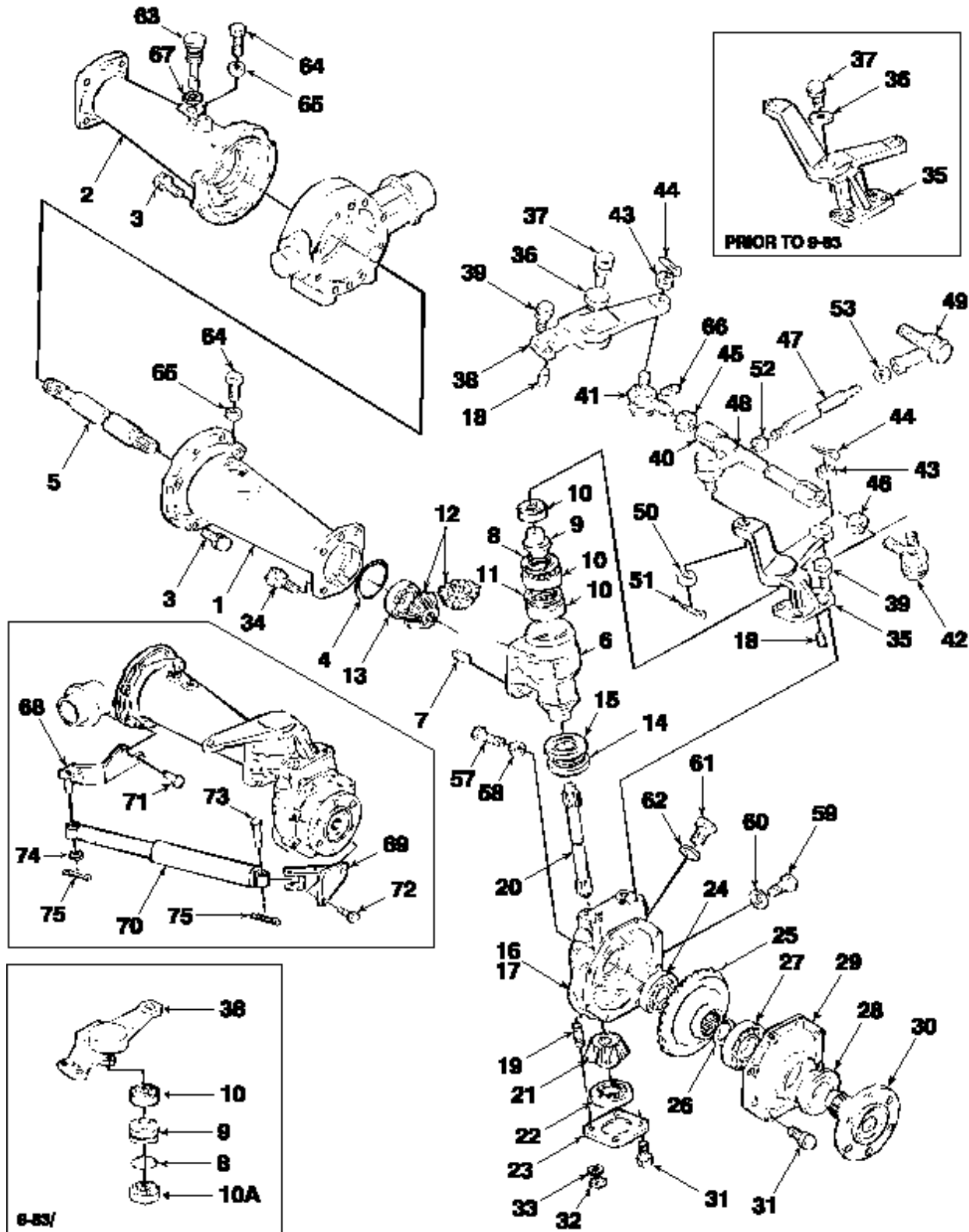


1310 3 CYL COMPACT TRACTOR (1/83-12/86)
03C02 FRONT AXLE, (NH-NA) W/4WD, 1310, 1510



**1310 3 CYL COMPACT TRACTOR (1/83-12/86)
03C02 FRONT AXLE, (NH-NA) W/4WD, 1310, 1510**

Key	Qty	Part Number	Part Name	Description
1	1	SBA326340770		Case, L.h., Start Year: 01/01/1983
2	1	SBA326340761	Case	Case, R.h., SBA-326340761, Case, R.h., Must Also Replace (1) SBA-398400150, Dipstick (1) SBA-398990050, Gasket, Start Year: 01/01/1983
3	16	SBA011511030	Captive Washer Screw	Screw, Captive Washer, Hex, M10 X 30, G5, Start Year: 01/01/1983
4	2	SBA052300850	O-ring	O-ring, Start Year: 01/01/1983
5	2	SBA326210760		Shaft, Differential, Used On & Bsn 00024, Start Year: 01/01/1983
5	2	SBA326210761	Shaft	Shaft, Differential, Used On & Asn 00025, Start Year: 01/01/1983
6	2	SBA322011990	Case	Case Assy. Includes: Ref. 7, Start Year: 01/01/1983
7	2	SBA030501025	Ball Pin	Dowel, M10 X 25 L, Pin, Start Year: 01/01/1983
8	2	SBA050203150	Seal Protection	Seal, Oil, I.d. 50mm, O.d. 65mm, Years: 01/01/1983-08/31/1983
8	2	SBA052300600	O-ring	O-ring, G60, Start Year: 09/01/1983
9	2	SBA330310740		Pin, King, Years: 01/01/1983-08/31/1983
9	2	SBA330310741	Pin	Pin, King, Start Year: 09/01/1983
10	4	SBA040109034	Ball Bearing	Bearing, Ball, 62/32, Years: 01/01/1983-08/31/1983
10	2	SBA040136305		Bearing, 6305, Upper, Start Year: 09/01/1983
10A	2	SBA040109034	Ball Bearing	Bearing, Ball, 62/32, Lower, Start Year: 09/01/1983
11	2	SBA036500065	Snap Ring	Ring, Snap, Start Year: 01/01/1983
12	4	SBA326240310	Gear	Gear, Start Year: 01/01/1983
13	2	SBA040109033	Bearing Assy	Bearing, 6-3/32, Start Year: 01/01/1983
14	2	SBA042532007	Bearing Assy	Bearing, Taper Roller, Start Year: 01/01/1983
15	2	SBA399030040	Seal Kit	Kit, Oil Seal, Start Year: 01/01/1983
16	1	SBA322017500	Casing	Case Assy., L.h., Used On & Asn UE06391, 1310, Used On Asn UH06751, 1510, Start Year: 01/01/1983
17	1	SBA322017510	Casing	Case Assy., R.h. Includes: Ref. 18 & 19, Used On & Asn UE06391, 1310, Used On Asn UH06751, 1510, Start Year: 01/01/1983
18	4	SBA030501025	Ball Pin	Dowel, M10 X 25 L, Pin, Start Year: 01/01/1983
19	4	SBA012110820	Stud	Stud, Bolt, Start Year: 01/01/1983
20	2	SBA322511290	Shaft	Shaft, Drive, Start Year: 01/01/1983
21	2	SBA326240300	Gear	Gear, Pinion & Ring, Start Year: 01/01/1983
22	2	80037203	Bearing Assy	Bearing, Ball, Start Year: 01/01/1983
23	2	SBA322213180	Cover	Cover, Case, Start Year: 01/01/1983
24	2	46805	Bearing Assy	Bearing, Start Year: 01/01/1983
25	2	SBA326370480	Gear	Gear, Start Year: 01/01/1983
26	4	SBA398340270	Snap Ring	Ring, Snap, Start Year: 01/01/1983
27	2	114085	Ball Bearing	Bearing, Start Year: 01/01/1983
28	2	SBA050609011	Seal Protection	Seal, Oil, Start Year: 01/01/1983
29	2	SBA322210741	Cover	Cover, Start Year: 01/01/1983
30	2	SBA326310723	Shaft	Shaft, Wheel, Start Year: 01/01/1983
31	20	N602550S36	Bolt	Screw, Hh, W/washer, CI 8.8, M8 X 1.25 X 25, Start Year: 01/01/1983
32	4	89706690	Nut	Nut, M8, CI 8, Start Year: 01/01/1983
33	4	87016617	Lock Washer	Washer, Spring, Start Year: 01/01/1983
34	8	SBA011511235	Bolt	Bolt, M12 X 35, Start Year: 01/01/1983

35	1	SBA330030170	Kit	Kingpin Assy., Kit, L.h. Includes: Ref. 8 Thru 10 & 35, 1110 - Used On & Asn UB02393, 1210 (u.s.) - Used On & Asn UC09506, Nh-e - Used On & Asn UB01350, Years:
35	1	SBA334521472	Arm	Arm, L.h., L/power Steering, Start Year: 09/01/1983
35	1	SBA334521482	Arm	Arm, L.h., W/power Steering, Start Year: 05/01/1985
36	2	SBA199346011	Washer	Washer, Start Year: 01/01/1983
37	2	SBA010331225	Bolt	Bolt, M12 X 25, Years: 01/01/1983-08/31/1983
38	1	SBA330030180	Kit	Kingpin Assy. Kit, R.h. Includes: Ref. 8 Thru 10 & 38 W/9-83, Dealer Can No Longer Get Arm W/whole. Must Order Kit., Years: 01/01/1983-08/31/1983
38	1	SBA334521492	Arm	Arm, R.h., Start Year: 09/01/1983
39	8	SBA011511025	Captive Washer Screw	Screw, Captive Washer, Hex, M10 X 25, G5, Start Year: 01/01/1983
40	1	SBA334700860	Link	Link Includes: Ref. 16, Start Year: 01/01/1983
41	1	SBA334800710	Track Rod End Assy	End Assy., R.h., Start Year: 01/01/1983
42	1	SBA334800690	Track Rod End Assy	End Assy., L.h. Includes: Ref. 43 Thru 46, Start Year: 01/01/1983
43	2	SBA334810080	Slotted Nut	Nut, Slotted, M12 X 1.25, Start Year: 01/01/1983
44	2	PL	Procure Locally	Pin, Start Year: 01/01/1983
45	1	SBA334810100	Nut	Nut, M17 X 1.5, Rh Thd, Start Year: 01/01/1983
46	1	SBA334810110	Nut	Nut, M17 X 1.5, Lh Thd, Start Year: 01/01/1983
47	1	SBA334711090	Connecting Link	Link, L/power Steering, Start Year: 01/01/1983
47	1	SBA334700260	Link	Link, W/power Steering, Start Year: 05/01/1985
48	1	SBA334801360	Track Rod End Assy	End Assy., R.h., L/power Steering Includes: Ref. 50, 50A, 50B & 50C, Start Year: 01/01/1983
48	1	SBA334800250	Track Rod End Assy	End Assy., R.h., W/power Steering Includes: Ref. 50, 50A & 51, Start Year: 05/01/1985
49	1	SBA334801260	Track Rod End Assy	End Assy., L.h., L/power Steering Includes: Ref. 50, 50A, 50B & 50C, Start Year: 01/01/1983
49	1	SBA334800240	Track Rod End Assy	End Assy., L.h., W/power Steering Includes: Ref. 50, 50A & 51, Start Year: 05/01/1985
50	2	SBA334810130	Nut	Nut, W/power Steering, M14 X 1.5, Not Illustrated, Start Year: 05/01/1985
50A	2	SBA334810070	Cover	Cover, Dust, L/power Steering, Not Illustrated, Start Year: 01/01/1983
50A	2	SBA334810140	Cover	Cover, Dust, W/power Steering, Not Illustrated, Start Year: 05/01/1985
50B	2	SBA030103225	Cotter Pin	Pin, Split (cotter), M3 X 25 L, L/power Steering, Not Illustrated, Start Year: 01/01/1983
50C	2	SBA334810202	Spring	Spring, L/power Steering, Not Illustrated, Start Year: 01/01/1983
50	2	SBA334810090	Nut	Nut, L/power Steering, M12 X 1.25-10, Start Year: 01/01/1983
51	2	PL	Procure Locally	Pin, Split, Start Year: 01/01/1983
52	1	SBA020800014	Nut	Nut, M14 X 1.5, Rh, L/power Steering, Start Year: 01/01/1983
52	1	320771	Nut	Nut, Jam, CI 8, M20 X 1.5, Rh, W/power Steering, Start Year: 05/01/1985
53	1	SBA020109029	Nut	Nut, L.h., L/power Steering, Start Year: 01/01/1983
53	1	SBA020109042	Nut	Nut, L.h., W/power Steering L.h. Threads, Start Year: 05/01/1985
57	2	86517808	Screw	Bolt, M10 X 35, Start Year: 01/01/1983
58	2	100016	Nut	Nut, M10, CI 8, Start Year: 01/01/1983
59	2	412211	Bolt	Bolt, Hex, M12 X 1.25 X 25, 8.8, Full Thd, Start Year: 01/01/1983
60	2	SBA025100012	Washer	Washer, M12, Seal, Start Year: 01/01/1983
61	2	SBA064600016	Plug	Plug, Start Year: 01/01/1983
62	2	SBA025100016	Washer	Seal, Washer, Start Year: 01/01/1983
63	1	SBA398400260	Dipstick	Dipstick, Rubber, Years: 01/01/1983-08/31/1983
63	1	SBA398400150	Dipstick	Dipstick, Metal, Start Year: 09/01/1983
64	2	43139	Bolt	Bolt, Hh, CI 8.8, M10 X 1.5 X 25, Start Year: 01/01/1983

65	2	100016	Nut	Nut, M10, CI 8, Start Year: 01/01/1983
66	2	SBA060610000	Lube Nipple	Nipple, Lube, M6 X .075, Start Year: 01/01/1983
67	1	SBA398990050	Gasket	Gasket, Start Year: 09/01/1983
68	1	SBA334650350	Bracket	Bracket, W/power Steering, Start Year: 05/01/1985
69	1	SBA334650400	Bracket	Bracket, W/power Steering, Start Year: 05/01/1985
70	1	SBA344950340	Cylinder	Cylinder, W/power Steering, Start Year: 05/01/1985
71	2	SBA011511040	Bolt	Bolt, M10 X 40, W/power Steering, M10 X 40, Start Year: 05/01/1985
72	2	SBA011510830	Bolt	Bolt, W/power Steering, M8 X 30, Start Year: 05/01/1985
73	1	SBA031311250	Pin	Pin, W/power Steering, Start Year: 05/01/1985
74	1	378245	Washer	Washer, M13 X 28 X 2 Thk, W/power Steering, Start Year: 05/01/1985
75	2	PL	Procure Locally	Pin, Cotter, W/power Steering, Start Year: 05/01/1985