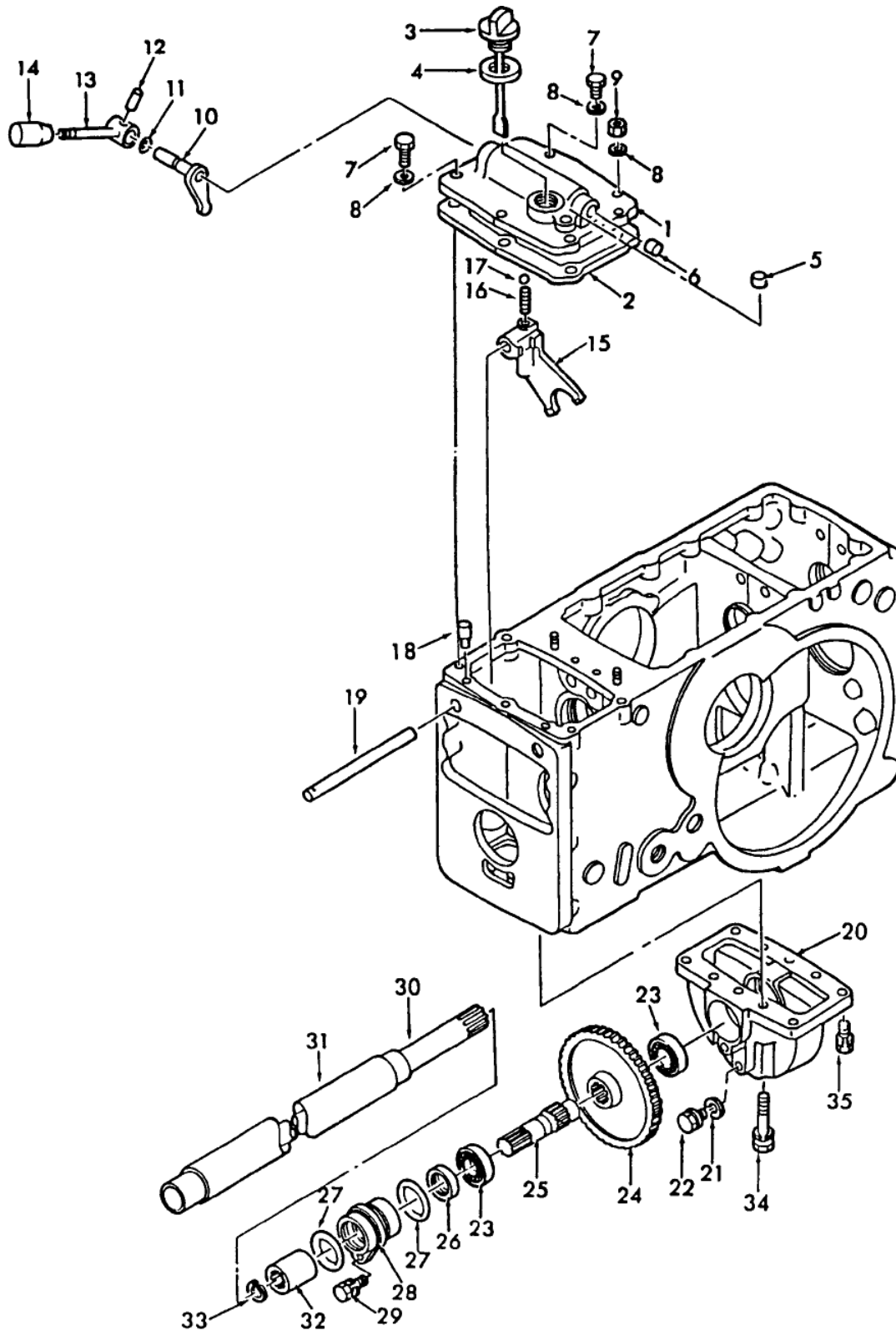


**1710 3 CYL COMPACT TRACTOR (1/83-12/86)**  
**07C11 4WD GEARS - 1310,1510, 1710**



**1710 3 CYL COMPACT TRACTOR (1/83-12/86)  
07C11 4WD GEARS - 1310,1510, 1710**

Key	Qty	Part Number	Part Name	Description
1	1	SBA324710421	Cover	Case, Start Year: 01/01/1983
2	1	SBA324990141	Gasket	Gasket, Start Year: 01/01/1983
3	1	SBA398400350	Dipstick	Dipstick, Transmission Oil, Start Year: 01/01/1983
4	1	SBA054109013	Gasket	Gasket, Start Year: 01/01/1983
5	1	SBA198466020	Plug	Plug, 33mm 10.4mm, Years: 01/01/1983-02/28/1983
6	1	SBA064200015	Plug	Plug, Years: 01/01/1983-02/28/1983
7	5	120104	Screw	Bolt, Hh, Cl 8.8, M8 X 1.25 X 20, Start Year: 01/01/1983
8	7	87016617	Lock Washer	Washer, Spring, Start Year: 01/01/1983
9	2	89706690	Nut	Nut, M8, Cl 8, Start Year: 01/01/1983
10	1	SBA324200130	Arm	Arm, Shift, Start Year: 01/01/1983
11	1	SBA052109076	O-ring	O-ring, Start Year: 01/01/1983
12	1	SBA030300625	Pin	Pin, Spring, Start Year: 01/01/1983
13	1	SBA324100151	Lever	Lever, Change, 4WD Engagement, Start Year: 01/01/1983
14	1	SBA498180100	Handle Grip	Grip, Start Year: 01/01/1983
15	1	SBA324410560	Shift, Fork	Fork, Pto Shifter, Fork Fits W/gear #8, Fig. 7C6., Start Year: 01/01/1983
16	1	SBA398210460	Spring	Spring, Start Year: 01/01/1983
17	1	86624944	Ball	Ball, 11/32" Dia, Start Year: 01/01/1983
18	1	SBA399610390	Pin	Pin, Start Year: 01/01/1983
19	1	SBA324310670	Rod	Rod, Start Year: 01/01/1983
20	1	SBA322110590	Case	Case, 4WD, No Gasket Available Like Item #43, Fig. 7C5, For 2110. Use Liquid Gasket., Start Year: 01/01/1983
21	1	SBA025100012	Washer	Washer, M12, Seal, Start Year: 01/01/1983
22	1	412211	Bolt	Bolt, Hex, M12 X 1.25 X 25, 8.8, Full Thd, Start Year: 01/01/1983
23	2	279593	Ball Bearing	Bearing, Start Year: 01/01/1983
24	1	SBA322321380	Gear	Gear, Fixing A, Pto, The Gear That Drives This Gear Is 322380280, Fig. 7C6, #30., Start Year: 01/01/1983
25	1	SBA322510560	Shaft	Shaft, Drive, Pto ,1710, Start Year: 01/01/1983
25	1	SBA322510520	Shaft	Shaft ,1310-1510, Start Year: 01/01/1983
26	1	SBA050203125	Seal	Seal, Oil, Start Year: 01/01/1983
27	2	SBA052300400	O-ring	O-ring, Start Year: 01/01/1983
28	1	SBA320190120	Clamp	Holder, Start Year: 01/01/1983
29	1	SBA011510820	Captive Washer Screw	Screw, Captive Washer, Hex, M8 X 1.25 X 20, G5, Start Year: 01/01/1983
30	1	SBA322511220	Shaft	Shaft, Drive ,1310,1510, Nhna Only, Start Year: 01/01/1983
30	1	SBA322511210	Shaft	Shaft, Drive ,1710, Drives Front End, Start Year: 01/01/1983
31	1	SBA320170460	Pipe	Pipe ,1310,1510, Nhna Only, Start Year: 01/01/1983
31	1	SBA320170470	Rigid Tube	Pipe ,1710, Start Year: 01/01/1983
32	1	SBA322610140	Coupling	Coupling ,1310,1510, Nhna Only, Start Year: 01/01/1983
32	1	SBA322610070	Coupling	Coupling ,1710, For Coupler On Other End, See Fig. 3D3, Item #24., Start Year: 01/01/1983
33	1	84078050	Snap Ring	Ring, Snap ,1710, Start Year: 01/01/1983
34	2	SBA011511060	Bolt	Bolt, M10 X 60, Start Year: 01/01/1983
35	6	SBA011511030	Captive Washer Screw	Screw, Captive Washer, Hex, M10 X 30, G5, Start Year: 01/01/1983