

200X AND 200CX LOADERS



200X Loader on 2305 Tractor



200CX Loader on 2520 Compact Tractor



2210 Tractor with 200X Loader and LX4 Rotary Cutter



200CX Loader

FEATURE/BENEFIT PROFILE



PRODUCTIVE LOADER/TRACTOR COMBINATION

- The 200X and 200CX Loaders are designed for use on the small-chassis 2305, 2520, 2210, 4110, and 4115 Tractors.

TRACTOR ATTACHING

- The 200X Loader is a non-parking loader intended to remain on the tractor. It can be removed with the use of a device to support the loader boom.
- The 200CX allows easy installation/removal of loader to/from the tractor without the use of tools.

MOUNTING FRAME

- Common mounting frame for both 200X and 200CX Loaders on a given tractor even though the 200X is a non-parking loader.
- Mounting frame bolts to tractor chassis for added strength.
- Does not interfere with other tractor operations.

LOADER PARKING OR DETACHING (200CX ONLY)

- Simple latch lifts to open for removal of the loader from the tractor once down pressure has been applied to loader.
- The latch automatically closes when loader is reattached.

LOADER BOOM

- Boom designed for durability and strength to handle loader operations.
- Upper boom half is tubular steel formed to match the tractor profile.
- Lower boom half is tubular steel, maintaining a compact tractor loader package.
- Tractor/loader combination offers excellent maneuverability.

LOADER MAST

- The loader mast is a casting, enabling the unique shape.
- Metal is used where it is required for maximum strength and durability.

END-OF-PIN LUBRICATION

- Unique offset head design eliminates cross-pins and cotter pins to retain the pin.
- A nut ensures the pins remain in position
- All pins are greaseable from the end, making grease points more accessible and visible to service.

QUICK-CHANGE ATTACHMENT CARRIER

- Makes it easy and fast to hookup and remove buckets or other attachments without tools.
- A one-piece timing rod ensures the carrier remains in time for connecting to different attachments.
- Utilizes current loader attachments.

HYDRAULICS

- Loader joystick control utilizes tractor SCVs and is integrated into tractor for convenient operation.
- Hoses are color-coded to reduce setup time.
- Hydraulic cylinders have superior rust resistance compared to chrome cylinders.

HOOD GUARDS

- Protect the front of the tractor.
- Remain with tractor when loader is removed.

BALLASTING

- Proper ballasting ensures efficient traction and stability.
- Rear ballast boxes are quick-hitch compatible.

PRODUCT STORY

MARKETS

The model 200X and 200CX Loaders are compatible with the 2305, 2520, 2210, 4110, and 4115 Tractors.

See Tractor/Loader Compatibility Chart for complete compatibility listing.

These loader and tractor combinations will provide a productive combination for:

- Residential property owners
- Small-property owners
- Rental yards
- Institutions

Typical tasks include:

- Loading
- Transporting
- Digging
- Grading

KEY IMPROVEMENTS

The 200 Series Loaders have the following improvements over the 210 and 410 Loaders, which they replace.

- New loader boom design
- A non-parking 200X Loader option
- Improved parking system for the 200CX Loader
- Cast loader mast and bucket carrier
- End-of-pin lubrication

These and additional features are covered in greater detail in the following product story.

MOUNTING FRAME



The mounting frames bolt to the tractor chassis and utilize a cross tie for added strength.

These mounting frames can be left on the tractor during operations other than loader work, as they do not impede operator visibility or tractor function.

QUIK-PARK™ LOADER MOUNTING SYSTEM (200CX)



The 200CX Loader is designed for easy removal/mounting to/from the tractor without tools.

The parking stand is attached to the mast and lowers into position by moving the joystick to the raise position once the latches are opened to allow the loader to move to the park position.

LOADER LATCH



Latch opens easily by lifting up on the latch and closes when the loader is reattached automatically.

LOADER BOOM



Contoured boom upper section and rectangular tube lower section combine for maximum durability and improved operator visibility.

- Torque tube connection on boom arms provides strength and rigidity.
- Hydraulic lines and hoses are mounted on the inside of the boom for protection from possible damage.
- Oil lines across the torque tube are protected by a guard on the 200CX Loader.
- The connection to the front of the tractor has been illuminated, providing better visibility to the bucket.

LOADER MAST



The loader mast is made from cast iron, which enables the unique shape.

The metal is placed in the areas where it is needed to provide strength and durability.

The mast is pinned to the mounting frame on the 200X Loader. The mast latches to the mounting frame on the 200CX Loader and the latch can be opened when down pressure is applied to the loader to allow the mast to rotate forward and be removed during the parking or detaching process.

END-OF-PIN LUBRICATION ON CYLINDER AND PIVOT PINS



Unique offset head design eliminates cross-pins and cotter pins to retain the pin.

A nut ensures the pins remain in position.

A lubrication groove provides a path for lubrication.

End-of-pin lubrication allows easy access to service grease points, which are visible from the side of the loader.

HYDRAULICS

Loader boom and bucket functions operate through the tractor hydraulic system. Tractor must be equipped with two SCV outlets. Hydraulic hoses use quick-couplers for fast, easy coupling/uncoupling to tractor mid-mount SCV location.



The loader control (joystick) is integrated into the operator platform for easy operation.

- Allows simultaneous boom/bucket functions using loader control.

HOOD GUARD

Loader control can be locked out to prevent accidental movement of the loader when not in use.

- Tractor system relief provides protection to the hydraulic system.

LOADER CYLINDERS

Boom and bucket cylinders are designed to match tractor hydraulics, resulting in productive cycle times.

Cylinder rod features a nitride (black) rod that provides improved corrosion resistance versus a standard chromed cylinder rod.



Hood guard shown on 4110 Tractor



Hood guard shown on 2305 Tractor

Protects front of tractor while operating the loader.

Hood guard on 2305 and 2520 Tractors also folds forward to allow opening of tractor hood.

Bolt-on design stays with tractor when loader is removed.

QUICK-CHANGE ATTACHMENT CARRIER

Allows fast, easy removal/mounting of attachments without tools.

MOWER COMPATIBILITY

The 200 Series loaders are compatible with mid-mount mowers. Allows using mower without removing loader (or loader without removing mower) for greater versatility.

BALLASTING LOADER

Adding ballast to the rear of the tractor is required for tractor stability during loader operations.

Improves traction on tractor/loader. See “Ballasting Tractor” section for specific recommendations.

TRACTOR/LOADER COMPATIBILITY AND EQUIPMENT REQUIREMENTS

COMPATIBILITY CHART

Loader	Current Tractors
200X, 200CX	2305, 2520, 2210, 4110, 4115
	Non-Current Tractors
	4100

SELECTING FRONT TREAD WIDTH



Tractor Tread Widths		
Loader	Minimum Tread Width	Maximum Tread Width
200X, 200CX	Approved	Approved

APPROVED FRONT TIRES

IMPORTANT: Tires are approved on their rated load capacity. Tires of similar size with equal to or greater load rating may be used

Current Tractors

Loader	Tractor	Approved Tire	Tire Type	Load Index	Ply Rating
200X, 200CX	2305	18x8.50-10	R1	74	4
		18x8.50-10	R3	74	4
	2520	7.00-12	R1	69	4
		24x8.50-14	R3	82	4
		23x8.5-12	R3	79	4
		23x8.5-12	R4	93	6
	4110 4115	7.00-12	R1	69	4
		23x8.5-12	R3	79	4
		23x8.5-12	R4	93	6

Non-Current Tractors

Loader	Tractor	Approved Tire	Tire Type	Load Index	Ply Rating
200X, 200CX	2210	18x8.50-10	R1	74	4
		18x8.50-10	R3	74	4
	4100	5.00-12	R1	60	4
		7.00-12	R1	69	4
		23x8.5-12	R3	79	4
		23x8.5-12	R4	93	6

The above tires are recommended when used in conjunction with rear tires recommended in your tractor operator's manual/sales manual.

Note: Liquid ballast is recommended in all rear tires as part of required total ballast. Fill tires 3/4-full using a calcium chloride mixture of 1.6 kg (3.5 lb.) per 4 L (1 gal.) of water.

BALLAST REQUIREMENTS AND REAR TREAD SETTING

Shown below are minimum rear tractor ballasting requirements for the 200 Series loaders. Ballast given is with minimum rear tread setting. Tread settings greater than the minimum improve stability.

Required Minimum Ballast for 200X or 200CX Loader on 2305 and 2210 Tractors

Option	Ballast
1	Fluid-filled rear tires, one wheel weight and 772 lb. (350 kg) of 3-point hitch ballast

Required Minimum Ballast for 200X or 200CX Loader on 2520, 4110, 4115, and 4100 Tractors

Option	Ballast
1	Fluid-filled rear tires and 772 lb. (350 kg) of 3-point hitch ballast
2	Three wheel weights per rear wheel and 772 lb. (350 kg) of 3-point hitch ballast

ADDING BALLAST TO 3-POINT HITCH



Weight can be added to the ballast box by adding material such as sand or concrete. If more weight is required, tractor Quik-Tatch weights may be used. A ballast box extension is available to increase capacity of the box. See Attachments section.

A 3-point-hitch-mounted implement may be used as ballast, but it must meet weight requirements of the ballast chart. See your John Deere dealer.

CALCULATED BALLAST

Unit	Sand	Concrete
Ballast Box	58.5 kg (129 lb.)	58.5 kg (129 lb.)
Ballast Material	217.5 kg (480 lb.)	315.5 kg (695 lb.)
Total Weight	276 kg (608 lb.)	374 kg (824 lb.)
Ballast Box with Extension	72.5 kg (160 lb.)	72.5 kg (160 lb.)
Ballast Material	306.5 kg (676 lb.)	443.5 kg (977 lb.)
Total Weight	379 kg (835 lb.)	516 kg (1137 lb.)

SPECIFIC REQUIREMENTS AND/OR RECOMMENDATIONS

Requirements and/or recommendations:

- 1) See “Approved Front Tires” section for approved tires.
- 2) Rollover protection is recommended for loader operation.
- 3) Proper ballast must be supplied - see ballast recommendations.
- 4) Tractor must be equipped with dual SCVs.

BASE MACHINE AND OPTIONAL EQUIPMENT CODES

200X LOADER

Code	Description	Weight - lb. (kg)
BASE MACHINE		
2501W	200X Loader	330 (149)
TRACTOR MOUNTING FRAMES		
2010	For 2305 Tractors	80 (36.4)
2020	For 4110 and 4100 Tractors	46 (20.7)
2040	For 2520 Tractors	100 (45.5)
2050	For 2210 Tractors	91 (41.2)
2060	For 4115 Tractors	93 (42.3)
2095	Less mounting frame	
BALLAST BOX		
4020	Ballast box	128 (58)
4030	Ballast box with extension	160 (72.3)
4095	Less ballast box	
HOOD GUARD		
5010	For 2305 and 2210 Tractors	37 (17)
5015	For 2520 Tractors	34 (15.5)
5020	For 4110, 4115, and 4100 Tractors	37 (17)
5095	Less hood guard	
BUCKETS		
<i>Note: Additional bucket sizes are available as 9000 Codes in the Attachments section.</i>		
8010	1250 mm (49-in.) materials bucket	155 (70.2)
8095	Less bucket	

200CX LOADER

Code	Description	Weight - lb. (kg)
BASE MACHINE		
2511W	200CX Loader	360 (163)
TRACTOR MOUNTING FRAMES		
2010	For 2305 Tractors	80 (36.4)
2020	For 4110 and 4100 Tractors	46 (20.7)
2040	For 2520 Tractors	100 (45.5)
2050	For 2210 Tractors	91 (41.2)
2060	For 4115 Tractors	93 (42.3)
2095	Less mounting frame	
BALLAST BOX		
4020	Ballast box	128 (58)
4030	Ballast box with extension	160 (72.3)
4095	Less ballast box	
HOOD GUARD		
5010	For 2305, 2210 Tractors	37 (17)
5015	For 2520 Tractors	34 (15.5)
5020	For 4110, 4115, and 4100 Tractors	37 (17)
5095	Less hood guard	
BUCKETS		
<i>Note: Additional bucket sizes are available as 9000 Codes in the Attachments section.</i>		
8010	1350 mm (53-in.) materials bucket	155 (70.2)
8095	Less bucket	

ATTACHMENTS

Code	Bundle	Description	Weight lb. (kg)
9010	BW15476	Bucket level indicator (200X only, included in base on 200CX)	4 (2)
9012	BW14144	49-in. (1250 mm) materials bucket	155 (70.2)
9015	BW14145	53-in. (1350 mm) materials bucket	183 (82.9)
9020	BW14146	61-in. (1550 mm) materials bucket	190 (86.1)
9050	BW15039	Floating-tine fork	395 (179.2)
9051	BW15263	Fixed-tine pallet fork	522 (236.8)
9090	BW15056	iMatch™ bushing kit	3 (1.3)
9095	BW15389	Australian code of practice kit	
9099	BW15401	French operator's manual	
9500	BWA1232	Export decals, operator's manuals, and CE label	

ATTACHMENTS FOR FIELD CONVERSION

Bundle	Description
BW15073	Ballast box
BW15074	Ballast box extension
BW15056	iMatch bushing kit
BW15330	Mounting frame for 2520 Tractors
BW15426	Mounting frame for 2305 Tractors
BW15396	Mounting frame for 2210 Tractors
BW15398	Mounting frame for 4100 and 4110 Tractors
BW15471	Mounting frame for 4115 Tractors
BW15399	Hood guard for 2520 Tractors
BW15217	Hood guard for 2305 and 2210 Tractors
BW15049	Hood guard for 4100, 4110, and 4115 Tractors
BW15476	Bucket level indicator

ATTACHMENTS

MATERIALS BUCKET



Materials buckets are available to match tractor/loader applications.

May be used for loading dirt, gravel, feed, and light materials as well as scraping, digging, and other general purpose tasks.

Top surface of the bucket is parallel to cutting edge, which aids operator as a levelling guide.

Quik-change connection for easy on/off.

Round-back design helps material flow when filling or dumping the bucket.

Code	Bundle	Description
9012	BW14144	1250 mm (49 in.) materials bucket
9015	BW14145	1350 mm (53-in.) materials bucket
9020	BW14146	1550 mm (61-in.) materials bucket

BUCKET LEVEL INDICATOR (200X ONLY)



The bucket level indicator is the same for both the 200X and 200CX Loaders; however, it is an option for the 200X Loader and it is in base machine for the 200CX Loader.

Code	Bundle	Description
9010	BW15476	Bucket level indicator

PALLET FORK



Floating-Tine Pallet Fork



Fixed-Tine Pallet Fork

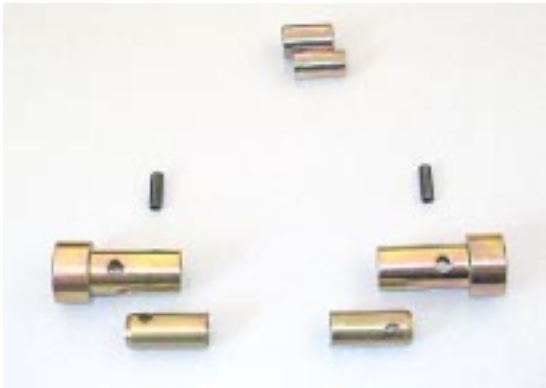
May be used for economical and easy moving of pallets, bulk bins, crates, boxes, etc. Spacing of tines can be changed to match requirements.

Backstop must be adjusted on the floating-tine pallet fork so there is at least 3-in. of contact between the rear of the upper load and the backstop.

The fixed-tine pallet fork has a fixed load support frame and does have dual attaching pins for use with 500 Series loaders as well.

Code	Bundle	Description
9050	BW15039	Pallet fork with 42-in. (1067 mm) floating tines
9051	BW15263	Pallet fork with 48-in. (1219 mm) fixed tines

iMatch™ QUICK-HITCH BUSHING KIT



Bushing kit for use with the iMatch Quick-Hitch and iMatch-compatible ballast boxes and implements.

Code	Bundle	Description
9090	BW15056	iMatch bushing kit

ATTACHMENTS FOR FIELD
CONVERSION

BALLAST BOX AND EXTENSION



Ballast box shown with extension

Ballast box can be used to carry additional ballast for greater tractor stability.

A 9-in. high extension can be added to ballast box for even greater capacity.

A bushing kit is required for the ballast box to be used with the iMatch Quick Hitch.

Bundle	Description
BW15073	Ballast box
BW15074	Ballast box extension

MOUNTING FRAMES



Mounting frames are available to allow using the loader on different tractors.

Bundle	Description
BW15426	Mounting frame for 2305 Tractor
BW15330	Mounting frame for 2520 Tractor
BW15398	Mounting frame for 4110 and 4100 Tractors
BW15471	Mounting frame for 4115 Tractor
BW15396	Mounting frame for 2210 Tractor

HOOD GUARD



Hood guard shown for 4110 Tractor



Hood guard shown on 2305 Tractor

A hood guard can be ordered for a tractor without ordering a loader.

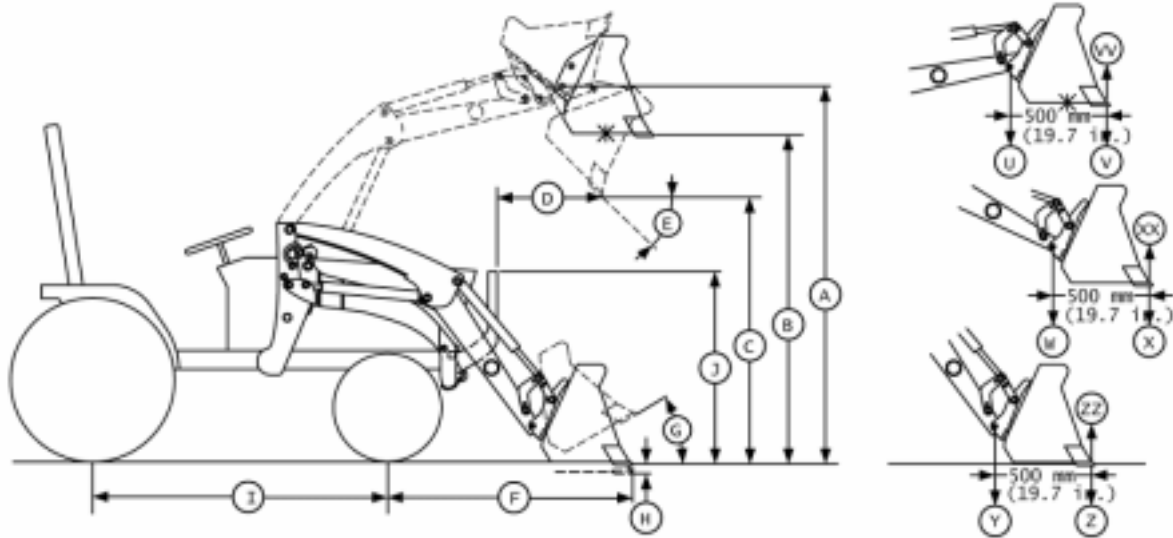
- Protects front of tractor while operating the loader.
- Bolt-on design stays with tractor when loader is removed.
- Hood guard on 2305 Tractor can be tilted forward to open the hood for service.

Note: A hood guard is included as standard equipment when ordering a loader.

Bundle	Description
BW15217	Hood guard for 2305 and 2210 Tractors
BW15049	Hood guard for 4110, 4115, and 4110 Tractors
BW15399	Hood guard for 2520 Tractors

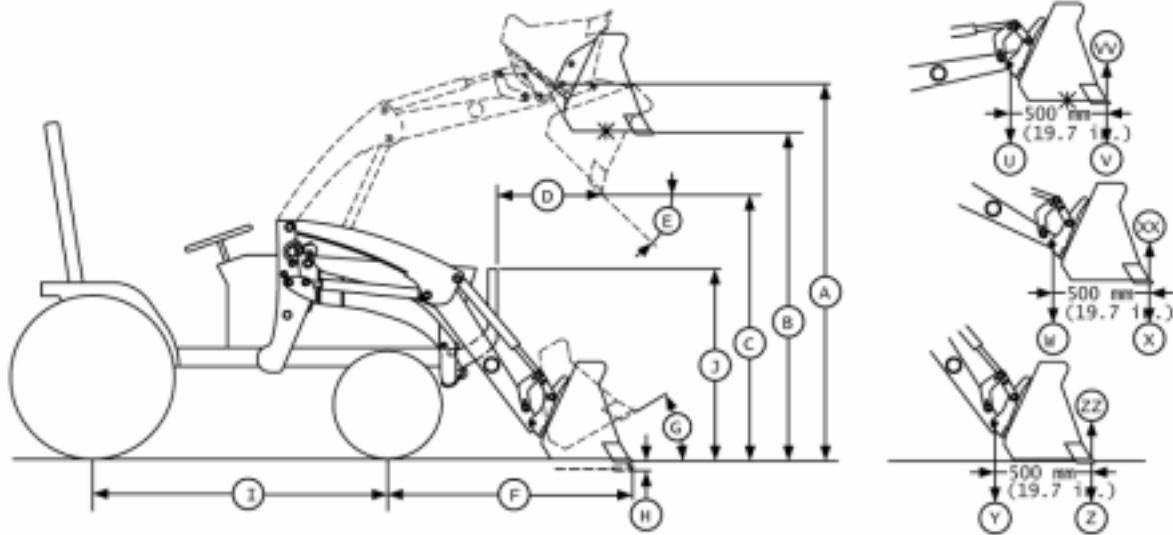
SPECIFICATIONS

200X/200CX Loader on 2305 Tractor

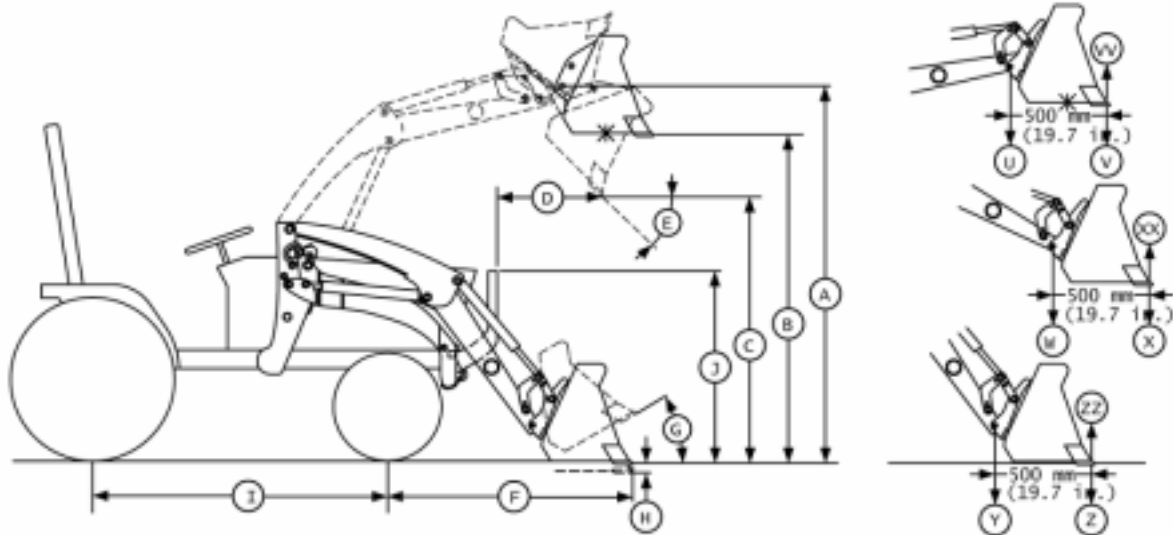


Tractor Model	2305	Reach:	
Front tires	18X8.5-10 R4	At max. lift height (D)	747 mm (29.4-in.)
Rear tires	26X12.00-12 R4	With bucket on ground (F)	1332 mm (52.5-in.)
Wheelbase (WB)	1450 mm (57-in.)	Angles:	
Bucket:		Max. dump angle (E)	38 degrees
Width	1250 mm (49-in.)	Max. dump angle at ground	111 degrees
Length (N)	618 mm (24.1-in.)	Max. rollback angle (G)	32 degrees
Mass	70 kg (154 lb.)	Rollback angle at full height (SAE)	104 degrees
Hydraulic System:		Overall Height:	
Rated flow	10.8 L/min. (2.85 gpm)	In carrying position (J)	1070 mm (42.1-in.)
Maximum pressure	13.7 MPA (2045 psi)	Lift Capacity:	
Cycle Times (in seconds):		To max. height at pivot pin (U)	323 kg (712 lb.)
Loader raising time	5.56	To max. height (V)	226 kg (498 lb.)
Loader lowering time	3.39	To 1.5 m (59-in.) at pivot pin (W)	383 kg (844 lb.)
Bucket dumping time	5.56/2.17	To 1.5 m (59-in.) (X)	280 kg (617 lb.)
w/regen			
Bucket rollback time	3.39	With forklift to max. height	kg (lb.)
Maximum Lift Height:		Breakout Force:	
To pivot pin (A)	1865 mm (73.4-in.)	At pivot pin (Y)	7310 N (1643 lb./ft.)
Clearance:		500 mm forward of pivot point (Z)	5100N (11147 lb./ft.)
With level bucket (B)	1699 mm (66.8-in.)	Bucket Rollback Force:	
With bucket dumped (C)	1411 mm (55.55-in.)	At max. height (VV)	5880 N (1322 lb./ft.)
Overall Length (WB + F):	2782 mm (109.5-in.)	At 1.5 m (59-in.) lift height (XX)	7010 N (1576 lb./ft.)
Dipping Depth (H):	231 mm (9-in.)	At ground level line (ZZ)	6840 N (1538 lb./ft.)

200X/200CX Loader on 2520 Tractor

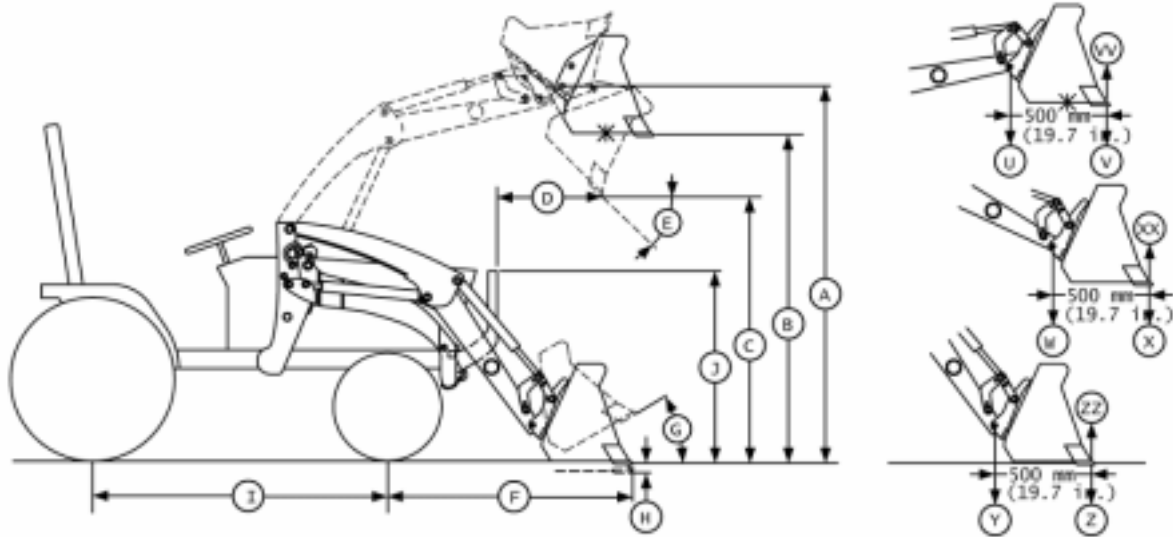


Tractor Model	2520	Reach:	
Front tires	23x8.50 6PR R4	At max. lift height (D)	750 mm (29.5-in.)
Rear tires	14-17.5 6PR R4	With bucket on ground (F)	1277 mm (50.3-in.)
Wheelbase (WB)	1655 mm (65.2-in.)	Angles:	
Bucket:		Max. dump angle (E)	38 degrees
Width	1350 mm (53-in.)	Max. dump angle at ground	117 degrees
Length (N)	633 mm (24.9-in.)	Max. rollback angle (G)	25 degrees
Mass	83 kg (183 lb.)	Rollback angle at full height (SAE)	105 degrees
Hydraulic System:		Overall Height:	
Rated flow	18.8 L/min. (4.96 gpm)	In carrying position (J)	1175 mm (46.3-in.)
Maximum pressure	16.67 MPA (2418 psi)	Lift Capacity:	
Cycle Times (in seconds):		To max. height at pivot pin (U)	410 kg (902 lb.)
Loader raising time	3.19	To max. height (V)	286 kg (629 lb.)
Loader lowering time	1.95	To 1.5 m (59-in.) at pivot pin (W)	511 kg (1124 lb.)
Bucket dumping time	3.19/1.25	To 1.5 m (59-in.) (X)	376 kg (827 lb.)
w/regen			
Bucket rollback time	1.95	With forklift to max. height	kg (lb.)
Maximum Lift Height:		Breakout Force:	
To pivot pin (A)	1993 mm (78.5-in.)	At pivot pin (Y)	9960 N (2239 lb./ft.)
Clearance:		500 mm forward of pivot point (Z)	6740 N (1515 lb./ft.)
With level bucket (B)	1832 mm (72.2-in.)	Bucket Rollback Force:	
With bucket dumped (C)	1487 mm (58.5-in.)	At max. height (VV)	7100 N (1596 lb./ft.)
Overall Length (WB + F):	2932 mm (115.4-in.)	At 1.5 m (59-in.) lift height (XX)	8870 N (1994 lb./ft.)
Dipping Depth (H):	100 mm (3.9-in.)	At ground level line (ZZ)	7570 N (1702 lb./ft.)

200X/200CX Loader on 4110 Tractor

Tractor Model	4110	Reach:	
Front tires	5.00-12 4PR R1	At max. lift height (D)	744 mm (29.3-in.)
Rear tires	8.00-16, 4 PR R1	With bucket on ground (F)	12751 mm (501-in.)
Wheelbase (WB)	1473 mm (58-in.)	Angles:	
Bucket:		Max. dump angle (E)	38 degrees
Width	1350 mm (53-in.)	Max. dump angle at ground	118 degrees
Length (N)	633 mm (24.9-in.)	Max. rollback angle (G)	25 degrees
Mass	77 kg (169.4 lb.)	Rollback angle at full height (SAE)	105 degrees
Hydraulic System:		Overall Height:	
Rated flow	27.7 L/min. (gpm)	In carrying position (J)	mm (-in.)
Maximum pressure	16.67 MPA (psi)	Lift Capacity:	
Cycle Times (in seconds):		To max. height at pivot pin (U)	363 kg (798.6 lb.)
Loader raising time	3.19	To max. height (V)	253 kg (556.6 lb.)
Loader lowering time	1.95	To 1.5 m (59-in.) at pivot pin (W)	468 kg (1029.6 lb.)
Bucket dumping time/regen	3.21/1.25	To 1.5 m (59-in.) (X)	344 kg (756.8 lb.)
Bucket rollback time	1.95	With forklift to max. height	kg (lb.)
Maximum Lift Height:		Breakout Force:	
To pivot pin (A)	2000 mm (78.7-in.)	At pivot pin (Y)	9510 N (2138 lb./ft.)
Clearance:		500 mm forward of pivot point (Z)	6430 N (1445 lb./ft.)
With level bucket (B)	1835 mm (72.2-in.)	Bucket Rollback Force:	
With bucket dumped (C)	1490 mm (58.6-in.)	At max. height (VV)	6850 N (1540 lb./ft.)
Overall Length (WB + F):	mm (-in.)	At 1.5 m (59-in.) lift height (XX)	8640 N (1942 lb./ft.)
Dipping Depth (H):	97 mm (3.8-in.)	At ground level line (ZZ)	7290 N (1639 lb./ft.)

200X/200CX Loader on 2210 Tractor



Tractor Model	2210	Reach:	
Front tires	18X8.5- 10 R4	At max. lift height (D)	826 mm (32.5-in.)
Rear tires	26X12.00-12 R4	With bucket on ground (F)	1430 mm (56.3-in.)
Wheelbase (WB)	1450 mm (57-in.)	Angles:	
Bucket:		Max. dump angle (E)	39 degrees
Width	1250 mm (49-in.)	Max. dump angle at ground	111 degrees
Length (N)	618 mm (24.1-in.)	Max. rollback angle (G)	31 degrees
Mass	70 kg (154 lb.)	Rollback angle at full height (SAE)	101 degrees
Hydraulic System:		Overall Height:	
Rated flow	20.7 L/min. (4.55 gpm)	In carrying position (J)	mm (-in.)
Maximum pressure	13.7 MPA (2045 psi)	Lift Capacity:	
Cycle Times (in seconds):		To max. height at pivot pin (U)	255 kg (561 lb.)
Loader raising time	2.9	To max. height (V)	179 kg (394 lb.)
Loader lowering time	1.77	To 1.5 m (59-in.) at pivot pin (W)	321 kg (706 lb.)
Bucket dumping time	2.91/1.14	To 1.5 m (59-in.) (X)	234 kg (515 lb.)
w/regen			
Bucket rollback time	1.77	With forklift to max. height	kg (lb.)
Maximum Lift Height:		Breakout Force:	
To pivot pin (A)	1865 mm (73.4-in.)	At pivot pin (Y)	6730 N (1513 lb./ft.)
Clearance:		500 mm forward of pivot point (Z)	4680N (1052 lb./ft.)
With level bucket (B)	1697 mm (66.8-in.)	Bucket Rollback Force:	
With bucket dumped (C)	1347 mm (53-in.)	At max. height (VV)	5580 N (1254 lb./ft.)
Overall Length (WB + F):	2880 mm (113.4-in.)	At 1.5 m (59-in.) lift height (XX)	6710 N (1508 lb./ft.)
Dipping Depth (H):	231 mm (9-in.)	At ground level line (ZZ)	6450 N (1450 lb./ft.)

BUCKET SPECIFICATIONS

Bucket Type	Width	Struck Capacity	Weight
Materials Bucket	1250 mm (49-in.)	0.17 cu. m (6.0 cu. ft.)	70.2 kg (155 lb.)
Materials Bucket	1350 mm (53-in.)	0.22 cu. m (7.8 cu. ft.)	82.9kg (183 lb.)
Materials Bucket	1550 mm (61-in.)	0.25 cu. m (9.0 cu. ft.)	86.1 kg (190 lb.)

