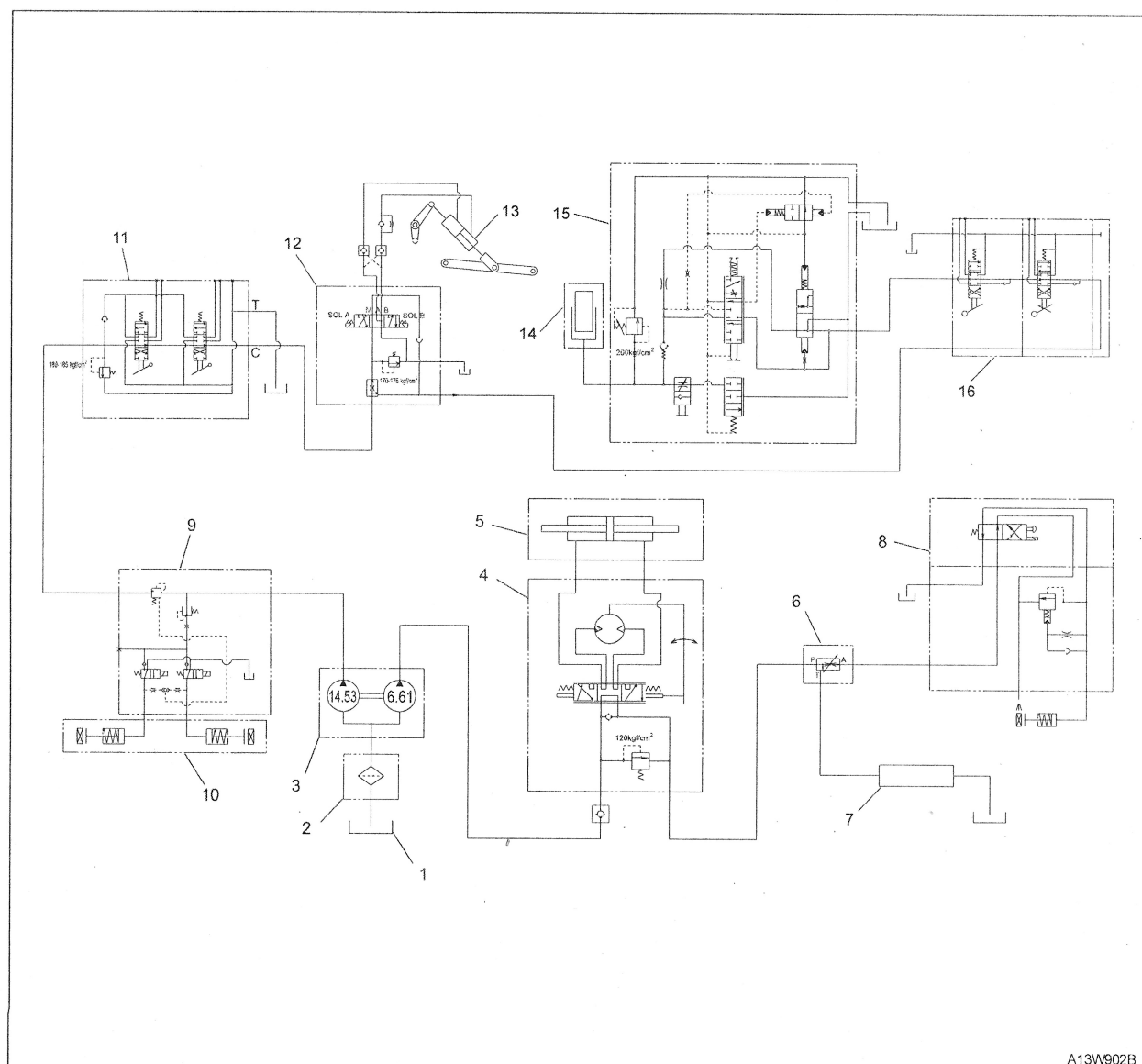


1.2 HYDRAULIC CIRCUIT

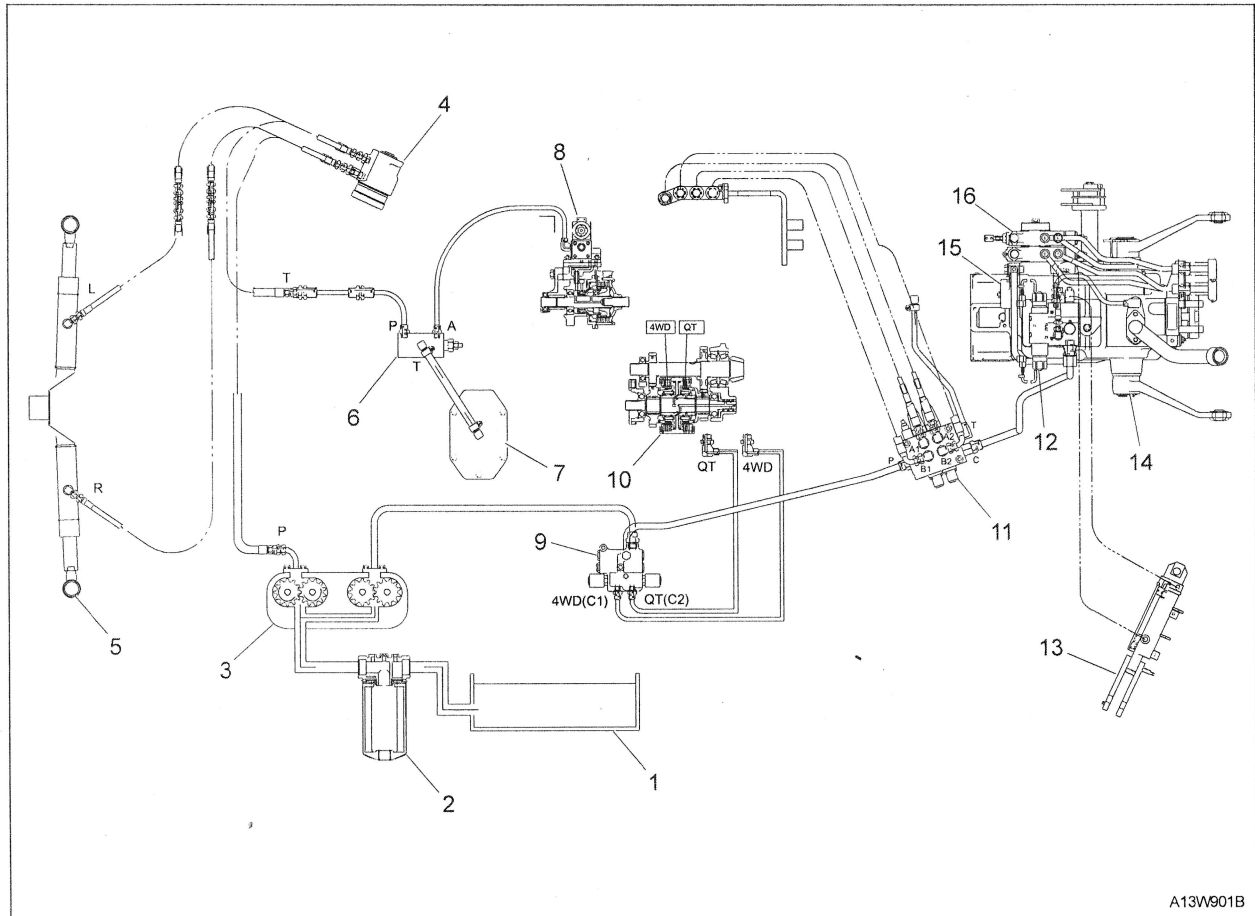


A13W902B

- | | |
|------------------------------|-------------------------------|
| (1) Transmission Case | (9) 4WD Q/T Valve |
| (2) Oil Filter | (10) 4WD Q/T Clutch |
| (3) Gear Pump | (11) Joystick Valve |
| (4) Power Steering Unit | (12) Horizontal Control Valve |
| (5) Steering Cylinder | (13) Lift Cylinder |
| (6) Priority Valve | (14) Hydraulic Lift Cylinder |
| (7) Shuttle Cover | (15) MLS Valve |
| (8) PTO Clutch Control Valve | (16) Auxiliary Control Valve |

1. STRUCTURE

1.1 HYDRAULIC OIL FLOW SHEMATIC



A13W901B

- | | |
|------------------------------|-------------------------------|
| (1) Transmission Case | (9) 4WD Q/T Valve |
| (2) Oil Filter | (10) 4WD Q/T Clutch |
| (3) Gear Pump | (11) Joystick Valve |
| (4) Power Steering Unit | (12) Horizontal Control Valve |
| (5) Steering Cylinder | (13) Lift Cylinder |
| (6) Priority Valve | (14) Hydraulic Lift Cylinder |
| (7) Shuttle Cover | (15) MLS Valve |
| (8) PTO Clutch Control Valve | (16) Auxiliary Control Valve |