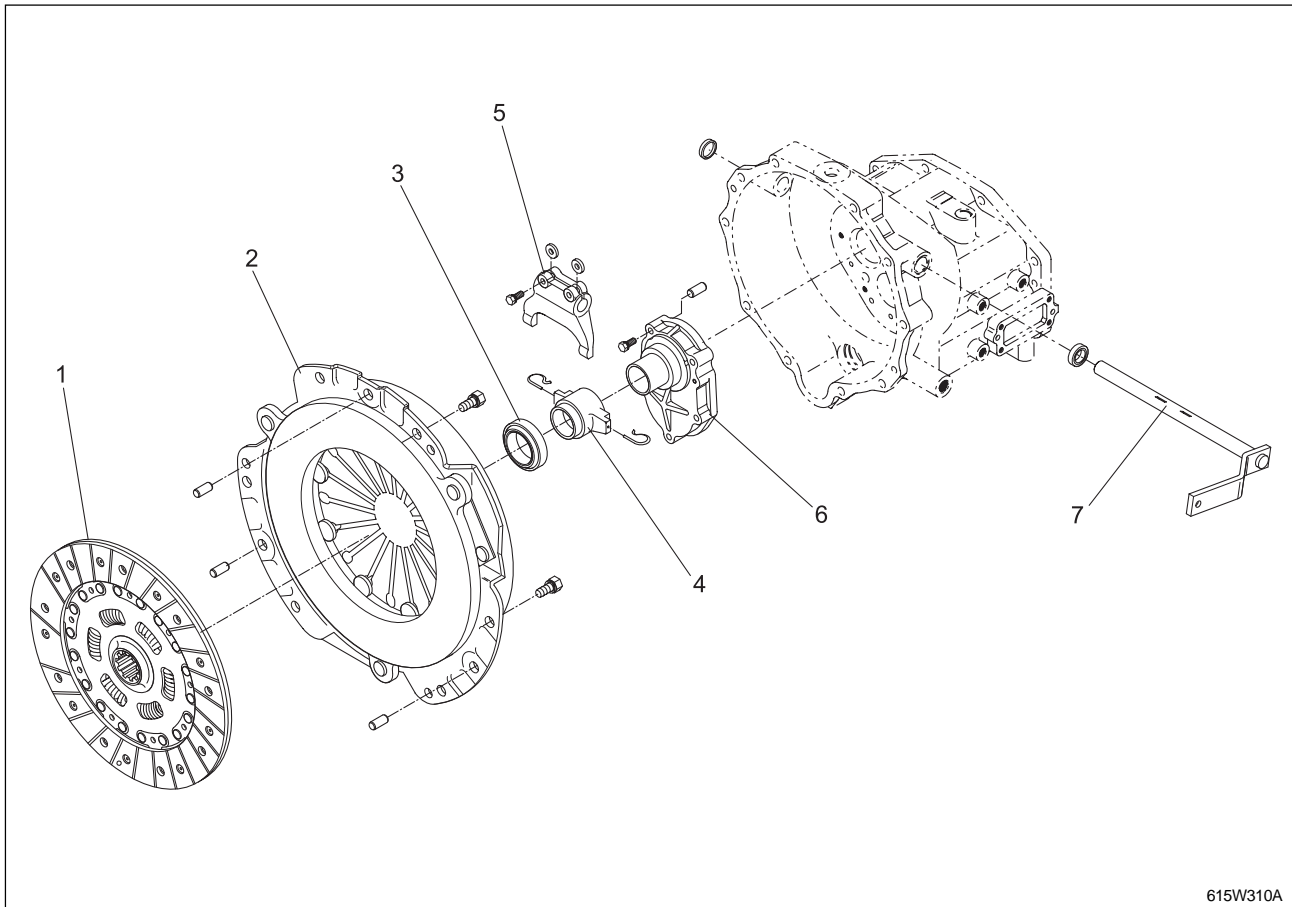


2. CLUTCH

2.1 CHARACTERISTICS



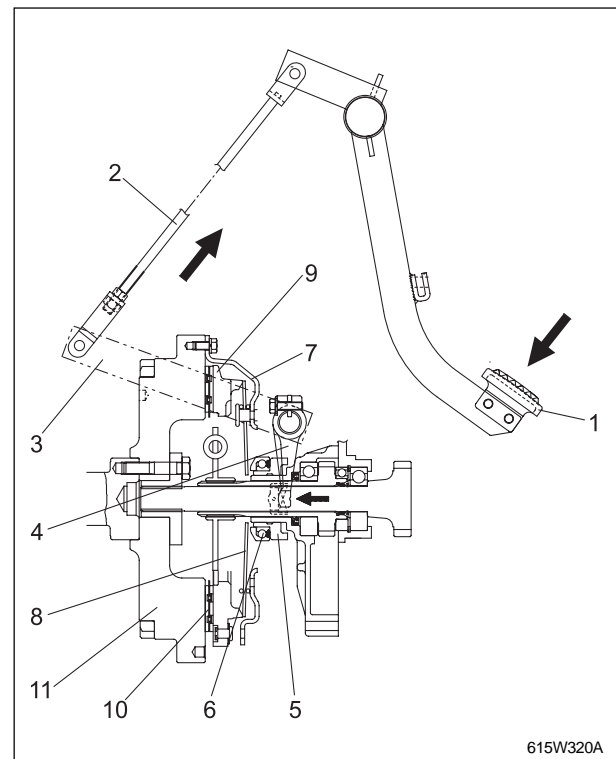
615W310A

- | | |
|---------------------------|---------------------------|
| (1) Clutch Disc Assembly | (5) Clutch Release Fork |
| (2) Clutch Cover Assembly | (6) Propulsion Shaft Case |
| (3) Release Bearing | (7) Main Clutch Lever |
| (4) Clutch Release Hub | |

- Independent PTO method clutch are adapted enable to control the power of Running and the PTO system independently.
- Running Clutch: Is a dry single plate clutch. Depress clutch pedal to disconnect power of running system.
- PTO Clutch: Is a wet multi plate clutch. Control the PTO switch to connect and disconnect power of the PTO.

2.2 LINK STRUCTURE AND CONTROL

- If working clutch pedal, clutch rod (2) is pulled in the direction of arrow and release hub (5) moves to the direction of arrow through release fork (4).
- Release bearing (6) of release hub pushes diaphragm spring (8) of clutch cover assembly (7), releases clutch disc (10) between clutch pressure plate (9) and flywheel (11), and then disconnects power from engine.



- (1) Clutch Pedal
- (2) Clutch Rod
- (3) Main Clutch Lever
- (4) Clutch Release Fork
- (5) Clutch Release Hub
- (6) Release Bearing
- (7) Clutch Cover Assembly
- (8) Diaphragm Spring
- (9) Pressure Plate
- (10) Clutch Disc
- (11) Flywheel