

## Tables taken from ASABE Three Point Hitch Standard

Table 1 – Categories	
Category	PTO power at rated rotational frequency of engine <sup>1)</sup> kW
1	up to 48
2	up to 92
3	80 to 185
4	150 to 350

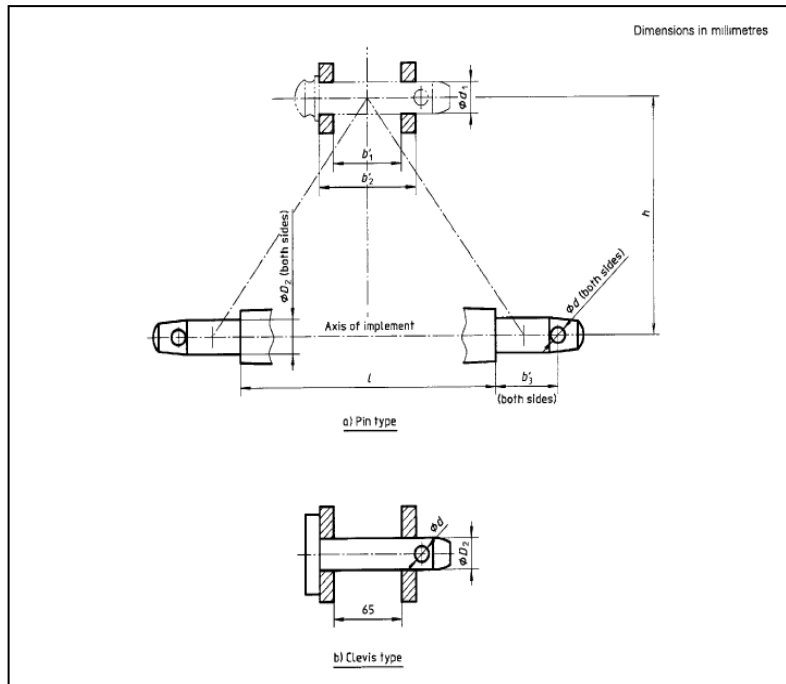
<sup>1)</sup>Determined in accordance with ISO 789-1.

Category	HP
1	Up to 64
2	Up to 123
3	107 to 248
4	201 to 469

kW converted to Hp (746 W/HP)

Table 4 – Dimensions concerning implement hitch attachments		Dimensions in millimeters				
Dimension (see Figure 5)	Description	Category				
		1	2	3	4L	4H
<b>Upper hitch attachment</b>						
$d_1$	Diameter of hitch pin hole	19.3 $^{+0.2}_0$	25.7 $^{+0.2}_0$	32 $^{+0.25}_0$	45.2 $^{+0.3}_0$	45.2 $^{+0.3}_0$
$b_1$	Width between inner faces of yoke	44.5 min.	52 min.	52 min.	65 min.	65 min.
$b_2$	Width between outer faces of yoke	69 max.	86 max.	95 max.	132 max.	132 max.
<b>Lower hitch attachment</b>						
$D_2$	Diameter of hitch pin	22 $^{0}_{-0.2}$	28 $^{0}_{-0.2}$	36.6 $^{0}_{-0.2}$	50.8 $^{0}_{-1.1}$	50.8 $^{0}_{-1.1}$
$b_3$	Linch pin hole distance	39 min.	49 min.	52 min.	68 min.	68 min.
$l$	Lower hitch point span <sup>1)</sup>	683±1.5	825±1.5	965±1.5	1,166.5±1.5	1,166.5±1.5
<b>Other dimensions</b>						
$d$	Diameter for linch pin hole for upper hitch pin	12 min.	12 min.	12 min.	17.5 min.	17.5 min.
	for lower hitch pins	12 min.	12 min.	17 min.	17.5 min.	17.5 min.
$h$	Mast height <sup>2)</sup>	460±1.5	610±1.5	685±1.5	685±1.5	1,100±1.5

<sup>1)</sup>It may be necessary to vary these dimensions in case of specialized implements. Where a shorter distance between the lower hitch points appears necessary, the following values are preferred:



Description	Category			
	1	2	3	4
$d_1$ (diameter upper pin hole)	0.76	1.01	1.25	1.78
$D_2$ (diameter lower pin)	0.87	1.0	1.52	2.0
$h$ (Mast Height)	18.11	24.02	26.97	26.97
$l$ (lower hitch point span)				

Dimensions converted to inches (25.4 mm/in)