

300, 300X, AND 300CX LOADERS



4310 Tractor with 300X Loader and LX5 Rotary Cutter



300X Loader



300CX Loader

FEATURE/BENEFIT PROFILE



PRODUCTIVE LOADER/TRACTOR COMBINATION

- The 300 Loader is designed for use on the 790 Tractors, replacing the 419 Loader.
- The 300X Loader is designed for use on the 4210, 4310, and 4410 Tractors, replacing the 420 Loader.
- The 300CX Loader is designed for use on the 4310 and 4410 Tractors, replacing the 430 Loader.

QUIK-PARK™ MOUNTING

- Allows easy installation/removal of loader to/from the tractor.

MOUNTING FRAME

- Mounting frame bolts to tractor chassis for added strength.
- Does not interfere with other tractor operations.

LOADER LATCH

- Adjustable for minimizing wear.
- Can lock the loader to the tractor to prevent removal.
- A secondary latch ensures the operator is aware of the position of the latch.

LOADER BOOM

- Contoured for improved forward visibility.
- Boom designed for durability and strength to handle loader operations.
- Upper boom half is contoured and tapered.
- Lower boom half is tapered, maintaining a compact tractor loader package.
- Tractor/loader combination offers excellent maneuverability.

LOADER MAST

- The loader mast is a casting, enabling the unique shape.
- Metal is used where it is required for maximum strength and durability.

CYLINDER PINS

- Unique offset head design eliminates cross-pins and cotter pins to retain the pin.
- A nut ensures the pins remain in position.

END-OF-PIN LUBRICATION

- All pins are greaseable from the end, making grease points more accessible and visible to service.

QUIK-CHANGE ATTACHMENT CARRIER

- Makes it easy and fast to hookup and remove buckets or other attachments without tools.
- A one-piece timing rod ensures the carrier remains in time for connecting to different attachments.
- Utilizes current loader attachments.

SKID STEER ATTACHMENT CARRIER OPTION

- An optional skid steer carrier is available to utilize skid steer attachments on the 300CX Loader.

HYDRAULICS

- Loader joystick control utilizes tractor SCVs and is integrated into tractor for convenient operation.
- Hoses are color-coded to reduce setup time.
- Hydraulic cylinders have superior rust resistance compared to chrome cylinders.

HOOD GUARDS

- Protect the front of the tractor.
- Remain with tractor when loader is removed.

BALLASTING

- Proper ballasting ensures efficient traction and stability.
- Quick-hitch compatible.

PRODUCT STORY

MARKETS

The model 300 Loader is compatible with the 790 Tractor and non-current 770 Tractor.

The model 300X Loader is compatible with the 4210, 4310 and 4410 Tractors and the non-current 4200, 4300, 4400, 870, 855, and 955 Tractors.

The model 300CX Loader is compatible with the 4310 and 4410 Tractors and the non-current 4300, 4400, 990, 970, and 1070 Tractors.

These loader and tractor combinations will provide a productive combination for:

- Residential property owners
- Small-farm owners
- Commercial operators
- Rental yards
- Institutions

Typical tasks include:

- Loading
- Transporting
- Digging
- Grading
- Dragging
- Feeding
- Manure handling

KEY NEW FEATURES

The 300 Series loaders have the following improvements over the 419, 420 and 430 Loaders, which they replace.

- New loader boom design
- Improved parking system
- Cast loader mast, bucket carrier, and linkage
- Optional skid steer carrier (300CX only)
- End-of-pin lubrication

These and additional features are covered in greater detail in the following product story.

MOUNTING FRAME



The mounting frames are a round tube design that bolt to the tractor chassis.

These mounting frames can be left on the tractor during operations other than loader work, as they do not impede operator visibility or tractor function.

QUIK-PARK™ LOADER MOUNTING SYSTEM



The 300 Series loaders are designed for easy removal/mounting to/from the tractor without tools.

The parking stand is an integral part of the loader, attached to the front frame of the tractor during loader operation. The parking stand lowers into position by moving the joystick to the raise position once the latches are opened to allow the loader to move to the park position.

LOADER LATCH



Opens and closes for mounting/parking the loader.

- Adjustable to minimize wear.
- Adjustment can be locked to disable parking function
- A secondary lock is also incorporated to ensure open/closed loader latch.

LOADER BOOM



Tapered and contoured boom section designed for maximum durability and improved operator visibility.

- Torque tube connection on boom arms provides strength and rigidity.
- Hydraulic lines and hoses are mounted on the inside of the boom for protection from possible damage.
- Lower linkage improves rollback power and improved working angles.

LOADER MAST



The loader mast is made from cast iron, which enables the unique shape.

The metal is placed in the areas where it is needed to provide strength and durability.

CYLINDER PINS

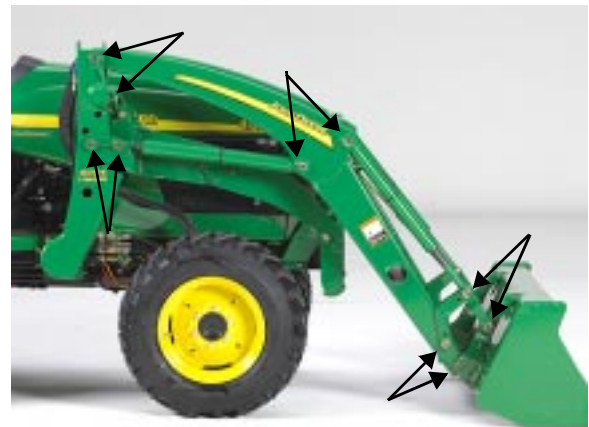


Unique offset head design eliminates cross-pins and cotter pins to retain the pin.

A nut ensures the pins remain in position.

A lubrication groove provides a path for lubrication.

END-OF-PIN LUBRICATION



Grease points are all accessible from the side of the loader for service convenience.

HYDRAULICS

Loader boom and bucket functions operate through the tractor hydraulic system. Tractor must be equipped with two SCV outlets. Hydraulic hoses use quick-couplers for fast, easy coupling/uncoupling to tractor mid-mount SCV location.



The loader control (joystick) is integrated into the operator platform for easy operation.

- Allows simultaneous boom/bucket functions using loader control.



Loader control can be locked out to prevent accidental movement of the loader when not in use.

- Tractor system relief provides protection to the hydraulic system.

LOADER CYLINDERS



Boom and bucket cylinders are designed to match tractor hydraulics, resulting in productive cycle times.

Cylinder rod features a nitride (black) rod that results in improved corrosion resistance versus a standard chromed cylinder rod.

HOOD GUARD



Protects front of tractor while operating the loader.

Bolt-on design stays with tractor when loader is removed.

QUICK-CHANGE ATTACHMENT CARRIER



Allows fast, easy removal/mounting of attachments without tools.

OPTIONAL SKID STEER ATTACHMENT CARRIER

An optional skid steer attachment carrier is available for the 300CX Loader and allows for the use of skid steer type attachments. See Attachments section.

MOWER COMPATIBILITY

The 300 Series loaders are compatible with mid-mount mowers. Allows using mower without removing loader (or loader without removing mower) for greater versatility.

BALLASTING LOADER

Adding ballast to the rear of the tractor is required for tractor stability during loader operations.

Improves traction on tractor/loader. See “Ballasting Tractor” section for specific recommendations.

TRACTOR/LOADER COMPATIBILITY AND EQUIPMENT REQUIREMENTS

COMPATIBILITY CHART

Loader	Tractor
300	790, 770
300X	4210, 4310, 4410, 4200, 4300, 4400, 870, 855, 955
300CX	4310, 4410, 990, 4300, 4400, 970, 1070

SELECTING FRONT TREAD WIDTH



Tractor Rear Tread Widths		
Loader	Minimum Tread Width	Maximum Tread Width
300	Not approved	Approved
300X	Approved	Approved
300CX	Approved on all compatible tractors except 990, 970, and 1070 Two-Wheel-Drive Tractors with R1 tires	Approved

APPROVED FRONT TIRES

IMPORTANT: Tires are approved on their rated load capacity. Tires of similar size with equal to or greater load rating may be used.

Loader	Tractor	Approved Tire	Tire Type	Load Index	Ply Rating
300	770	25x8.5-14	R-3	90	4
		5.00-15	F-2	69	4
		6.00-12	R-1	63	4
	790	25x8.50-14	R-3	90	4
		25x8.50-14	R-4	94	6
		5.00-15	F-2	69	4
		5.90-15 SL	F-2	85	4
		7.00-14	R-1	84	6
300X	4200/4210	25x8.50-14	R-4	90	4
		23x8.50-12NHS	R-4	93	6
		5.00-15	F-2	69	4
		7.00-14	R-1	84	6
	4300/4400/4310/4410	25x8.50-14	R-4	94	6
		27x8.50-15	R-3	90	6
		27x8.50-15	R-3	92	4
		7.00-14	R-1	84	6
		7.00-16	R-1	84	6
	855/955	23x8.50-12	R-4	79	4
		23x8.50-12NHS	R-4	93	6
		25x8.50-14	R-3	90	4
		7.00-12	R-1	69	4
	870	25x8.50-14	R-4	90	4
		5.00-15	F-2	69	4
		7.00-14	R-1	72	4
		7.00-14	R-1	84	6
300CX	4300/4400/4310/4410	25x8.50-14	R-4	94	6
		27x8.50-15	R-3	90	6
		27x8.50-15	R-3	92	4
		5.00-15	F-2	69	4
		5.90-15SL	F-2	85	4
		7.00-14	R-1	84	6
		7.00-14	R-1	72	4
		7.00-16	R-1	84	6
	970	27x8.50-15	R-3	92	4
		5.00-15	F-2	69	4
		5.50-16SL	F-2	75	4
		7.00-16	R-1	84	6
	990	10.00-16.5	R-4	110	6
		27x10.5	R-3	94	4
		6.50-16	F-2	88	6
		6.50-16	F-2	81	4
		8.00-16	R-1	91	6
	1070	27x8.50-15	R-3	92	4
		6.00-16	F-2	85	6
		6.00-16	F-2	81	4
		8.00-16	R-1	91	6

The above tires are recommended when used in conjunction with rear tires recommended in your tractor Operator's Manual/Sales Manual.

Note: Liquid ballast is recommended in all rear tires as part of required total ballast. Fill tires 3/4-full using a calcium chloride mixture of 1.6 kg (3.5 lb.) per 4 L (1 gal.) of water.

BALLAST REQUIREMENTS AND REAR TREAD SETTING

Shown below are minimum rear tractor ballasting requirements for the 300 Series loaders.

300 Loader

Tractor	Recommended Ballast
790, 770	Rear tires with liquid ballast, and 280 kg. (617 lb.) 3-point hitch ballast

Ballast given is with minimum rear tread setting. Tread settings greater than the minimum improve stability.

300X Loader

Tractor	Recommended Ballast
4210/4200	Rear tires with liquid ballast, and 280 kg. (617 lb.) 3-point hitch ballast or Three rear wheel weights per wheel and 300 kg. (661 lb.) of 3-point hitch ballast
4310, 4410, 4300, 4400	Rear tires with liquid ballast, and 300 kg. (661 lb.) 3-point hitch ballast or Three rear wheel weights per wheel and 350 kg. (770 lb.) of 3-point hitch ballast
870 2-WD R1 Tires	Rear tires with liquid ballast, and 535 kg. (1177 lb.) 3-point hitch ballast
870 4-WD R1 Tires	Rear tires with liquid ballast, and 485 kg. (1069 lb.) 3-point hitch ballast
870 2-WD R3 Tires	Rear tires with liquid ballast, and 395 kg. (870lb.) 3-point hitch ballast
870 4-WD R3 Tires	Rear tires with liquid ballast, and 324 kg. (712 lb.) 3-point hitch ballast
855 with 9.5-16 R1 Tires	Rear tires with liquid ballast, 485 kg. (1069 lb.) 3-point hitch ballast and 2 rear wheel weights per wheel
855 with 33x12.50-15 R3 Tires	Rear tires with liquid ballast, 485 kg. (1069 lb.) 3-point hitch ballast and 1 rear wheel weights per wheel
855 with 11.2-16 R1 Tires	Rear tires with liquid ballast, 485 kg. (1069 lb.) 3-point hitch ballast and 1 rear wheel weights per wheel
855 with 36x13.50-15 R3 Tires	Rear tires with liquid ballast, 485 kg. (1069 lb.) 3-point hitch ballast and 3 rear wheel weights per wheel
855 with 12x16.4 R4 Tires	Rear tires with liquid ballast, 485 kg. (1069 lb.) 3-point hitch ballast and 2 rear wheel weights per wheel
955 with 9.5-16 R1 Tires	Rear tires with liquid ballast, 324 kg. (712 lb.) 3-point hitch ballast and no rear wheel weights per wheel
955 with 33x12.50-15 R3 Tires	Rear tires with liquid ballast, 324 kg. (712 lb.) 3-point hitch ballast and no rear wheel weights per wheel
955 with 11.2-16 R1 Tires	Rear tires with liquid ballast, 324 kg. (712 lb.) 3-point hitch ballast and 3 rear wheel weights per wheel
955 with 36x13.50-15 R3 Tires	Rear tires with liquid ballast, 324 kg. (712 lb.) 3-point hitch ballast and no rear wheel weights per wheel
955 with 12x16.4 R4 Tires	Rear tires with liquid ballast, 324 kg. (712 lb.) 3-point hitch ballast and 3 rear wheel weights per wheel

Ballast given is required with minimum rear tread setting. Tread settings greater than the minimum improve stability.

300CX Loader

Tractor	Recommended Ballast
4310, 4410, 4300, 4400	Rear tires with liquid ballast, 500 kg. (1100 lb.) 3-point hitch ballast and three rear wheel weights per wheel
990, 970, 1070 2-WD R1 Tires	Rear tires with liquid ballast, and 350 kg. (770 lb.) 3-point hitch ballast
990, 970, 1070 4-WD R1 Tires	Rear tires with liquid ballast, and 400 kg. (880 lb.) 3-point hitch ballast
990, 970, 1070 2-WD R3 Tires	Rear tires with liquid ballast, and 240 kg. (530 lb.) 3-point hitch ballast
990, 970, 1070 4-WD R3 Tires	Rear tires with liquid ballast, and 235 kg. (520 lb.) 3-point hitch ballast

Ballast given is required with minimum rear tread setting except for 990, 970, 1070 2-WD R1 tires, which must be set to the maximum rear tread setting. Tread settings greater than the minimum improve stability.

ADDING BALLAST TO 3-POINT HITCH



Weight can be added to the ballast box by adding material such as sand or concrete. If more weight is required, tractor Quik-Tatch weights may be used. A ballast box extension is available to increase capacity of the box. See Attachments section.

A 3-point-hitch-mounted implement may be used as ballast, but it must meet weight requirements of the ballast chart. See your John Deere dealer.

CALCULATED BALLAST

Unit	Sand	Concrete
Ballast Box	58.5 kg (129 lb.)	58.5 kg (129 lb.)
Ballast Material	217.5 kg (480 lb.)	315.5 kg (695 lb.)
Total Weight	276 kg (608 lb.)	374 kg (824 lb.)
Ballast Box with Extension	72.5 kg (160 lb.)	72.5 kg (160 lb.)
Ballast Material	306.5 kg (676 lb.)	443.5 kg (977 lb.)
Total Weight	379 kg (835 lb.)	516 kg (1137 lb.)

SPECIFIC REQUIREMENTS AND/OR RECOMMENDATIONS

Requirements and/or recommendations:

- 1) 7.00-14 6 PR or higher capacity front tires are recommended.
- 2) 11.2-24 4 PR or higher capacity rear tires are recommended
- 3) Rollover protection is recommended for loader operation.
- 4) Proper ballast must be supplied - see ballast recommendations.
- 5) Tractor must be equipped with dual SCVs and loader control.

BASE MACHINE AND OPTIONAL EQUIPMENT CODES

300 Loader

Code	Description
BASE MACHINE	
2111W	300 Loader
TRACTOR MOUNTING FRAMES	
2000	For 790 (SN LV0790G790000 -) Tractors
2010	For 770 and 790 (SN - LV790G790000) Tractors
2095	Less mounting frame
BALLAST BOX	
4000	Ballast box
4010	Ballast box with extension
4095	Less ballast box
BUCKETS	
<i>Note: Additional bucket sizes are available as 9000 Codes in the Attachments section.</i>	
8000	1550 mm (61-in.) materials bucket
8095	Less bucket

300X Loader

Code	Description
BASE MACHINE	
2521W	300X Loader
TRACTOR MOUNTING FRAMES	
2000	For 4210, 4310, 4410, 4200, 4300, and 4400 Tractors
2010	For 855 and 955 Tractors
2020	For 870 Tractors
2095	Less mounting frame
BALLAST BOX	
4000	Ballast box
4010	Ballast box with extension
4095	Less ballast box
HOOD GUARD	
5000	For 4210, 4310, 4410, 4200, 4300, and 4400 Tractors
5015	For 855 and 955 Tractors
5020	For 870 Tractors
5095	Less hood guard
BUCKETS	
<i>Note: Additional bucket sizes are available as 9000 Codes in the Attachments section.</i>	
8000	1550 mm (61-in.) materials bucket
8095	Less bucket

300CX Loader

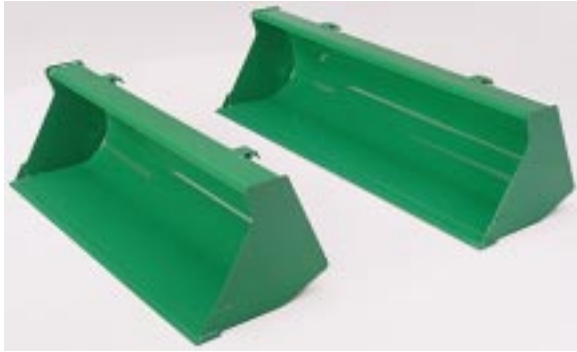
Code	Description
BASE MACHINE	
2531W	300CX Loader
TRACTOR MOUNTING FRAMES	
2000	For 4310, 4410, 4300 and 4400 Tractors
2010	For 990 (SN LV0990G590001 -) Tractors
2020	For 970, 990 (SN - LV0990G590000), and 1070 Tractors
2095	Less mounting frame
BALLAST BOX	
4000	Ballast box
4010	Ballast box with extension
4095	Less ballast box
HOOD GUARD	
5000	For 4310, 4410, 4300, and 4400 Tractors
5015	For 970, 990, and 1070 Tractors
5095	Less hood guard
BUCKETS	
<i>Note: Additional bucket sizes are available as 9000 Codes in the Attachments section.</i>	
8000	1550 mm (61-in.) materials bucket
8095	Less bucket

Attachment Compatibility

Code	Description	300	300X	300CX
9015	53-in. (1350 mm) materials bucket	X	X	---
9020	61-in. (1550 mm) materials bucket	X	X	X
9025	73-in. (1850 mm) materials bucket	X	X	X
9030	61-in. (1550 mm) heavy-duty bucket	X	X	X
9035	73-in. (1850 mm) heavy-duty bucket	---	---	X
9040	73-in. (1850 mm) high-volume bucket	---	---	X
9041	85-in. (2150 mm) high-volume bucket	---	---	X
9049	Third function oil tubes and hoses	---	---	X
9050	Floating-tine fork	X	X	X
9051	Fixed-tine pallet fork	X	X	X
9060	Bale spear	---	---	X
9070	Tooth bar for 61-in. (1550 mm) bucket	X	X	X
9072	Tooth bar for 73-in. (1850 mm) bucket	X	X	X
9080	61-in. (1550 mm) replaceable bucket cutting edge	X	X	X
9082	73-in. (1850 mm) replaceable bucket cutting edge	X	X	X
9090	iMatch bushing kit	X	X	X
9099	French operator's manual	X	X	X
9200	Skid steer attachment carrier	---	---	X
9500	Export decals, operator's manuals, CE labels, and tow hitch support	---	X	X

ATTACHMENTS

MATERIALS BUCKET



Materials buckets are available to match tractor/loader applications.

May be used for loading dirt, gravel, feed and light materials, as well as scrapping, digging and other general purpose tasks.

IMPORTANT: Materials buckets are not recommended for heavy-duty tasks. For “heavier use” applications, use heavy-duty bucket.

Top surface of the bucket is parallel to cutting edge, which aids operator as a levelling guide.

Quik-change connection for easy on/off.

Round-back design helps material flow when filling or dumping the bucket.

Code	Bundle	Description
9015	BW14145	1350 mm (53-in.) materials bucket
9020	BW14146	1550 mm (61-in.) materials bucket
9025	BW14147	1850 mm (73-in.) materials bucket

HEAVY-DUTY BUCKET



Heavy-duty buckets are available for tasks requiring more robust bucket designs.

Recommended for heavier use applications, such as commercial operations.

Top surface of the bucket is parallel to the cutting edge, which aids operator as a levelling guide.

Additional strength is built into the bucket design with additional wear bars, boxed top bucket section, and bucket end plate supports.

Cutting edge has holes pre-drilled for addition of a replaceable cutting edge.

Code	Bundle	Description
9030	BW14764	1550 mm (61-in.) heavy-duty bucket
9035	BW14765	1850 mm (73-in.) heavy-duty bucket

HIGH-VOLUME BUCKET



Large-capacity buckets for the 300CX Loader for light material use such as handling mulch, sawdust, feed, and snow.

IMPORTANT: Not designed to withstand heavy material or usages other than light materials.

Top surface of the bucket is parallel to the cutting edge, which aids operator as a leveling guide.

Quik-change for easy on/off.

Code	Bundle	Description
9040	BW14658	73-in. (1850 mm) high volume bucket
9041	BW15273	85-in. (2150 mm) high volume bucket

THIRD FUNCTION OIL TUBES (300CX only)



Provides hydraulic couplers at the front of the loader boom for operating attachments that require third function hydraulics.

Note: Tractor must be equipped with a third SCV.

Code	Bundle	Description
9049	BW15261	Oil tubes and hoses, third function

PALLET FORK



Floating-Tine Pallet Fork



Fixed-Tine Pallet Fork

May be used for economical and easy moving of pallets, bulk bins, crates, boxes, etc. Spacing of tines can be changed to match requirements.

Backstop must be adjusted on the floating-tine pallet fork so there is at least 3-in. of contact between the rear of the upper load and the backstop.

The fixed-tine pallet fork has a fixed load support frame and does have dual attaching pins for use with 500 Series loaders as well.

Code	Bundle	Description
9050	BW15039	Pallet fork with 42-in. (1067 mm) floating tines
9051	BW15263	Pallet fork with 48-in. (1219 mm) fixed tines

BALE SPEAR (300CX only)

Provides customer with low-cost means of handling round bales.

Upper tine is designed for maximum penetration into the bale. Length 1250 mm (49.2-in.).

- Slim-line profile
- Made of high-strength steel
- Two high-strength steel lower tines prevent bale rotation; length - 550 mm (21.6-in.).
- Quik-change for easy on/off.

Code	Bundle	Description
9060	BW15045	Bale spear

TOOTH BAR

Attach to bucket to help penetrate hard-packed material.

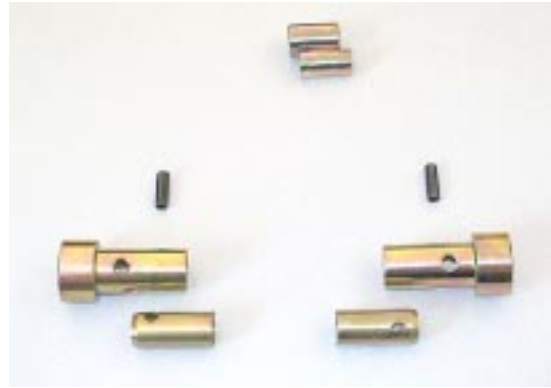
- Holes must be drilled in bucket side plates to accept the tooth bar.
- Protrudes beyond bucket edge approximately 150 mm or 6-in.
- Recommended for use with heavy-duty buckets only.

Code	Bundle	Description
9070	BW15227	Tooth bar for 61-in. (1550 mm) bucket
9072	BW15228	Tooth bar for 73-in. (1850 mm) bucket

REPLACEABLE CUTTING EDGE

Recommended for "heavier use" applications, such as commercial operations and rental customers. Additional strength is added to the cutting edge. Replaceable and reversible cutting edge for longer wear life.

Code	Bundle	Description
9080	BW14762	1550 mm (61-in.) replaceable cutting edge
9082	BW14763	1850 mm (73-in.) replaceable cutting edge

iMatch™ QUICK-HITCH BUSHING KIT

Bushing kit for use with the iMatch Quick-Hitch and iMatch-compatible ballast boxes and implements.

Code	Bundle	Description
9090	BW15056	iMatch bushing kit

SKID STEER ATTACHMENT CARRIER (300CX only)

Allows for the use of skid steer attachments on the 300CX Loader. See list of compatible attachments below.

Compatible Worksite Pro Attachments

Bundle	Description
KV22801	66-in. utility bucket
KV21474	72-in. utility bucket
KV11636	66-in. foundry bucket
KV11637	72-in. foundry bucket
0252KV	42-in. rail pallet fork
0253KV	48-in. rail pallet fork
0255KV	42-in. pin pallet fork
0256KV	48-in. pin pallet fork
0140KV	Bale spear

Code	Bundle	Description
9200	BW15244	Skid steer attachment carrier

ATTACHMENTS FOR FIELD CONVERSION

BUCKET LEVEL INDICATOR



Assists operator to determine bucket position at ground level.

Note: Provided in base machine on 300X and 300CX Loaders.

Bundle	Description
BW15223	Bucket level indicator

BALLAST BOX AND EXTENSION



Ballast box shown with extension

Ballast box can be used to carry additional ballast for greater tractor stability.

A 9-in. high extension can be added to ballast box for even greater capacity.

A bushing kit is required for the ballast box to be used with the iMatch Quick Hitch.

Bundle	Description
BW15073	Ballast box
BW00488	Ballast box with extension
BW15074	Ballast box extension

MOUNTING FRAMES



Mounting frames are available to allow using the loader on different tractors

300 Loader

Bundle	Description
BW15206	Mounting frame for 770 and 790 Tractors
BWA1198	Mounting frame with hoses and parts for 790 (SN LV0790G790001-) Tractors
BWA1199	Mounting frame with hoses and parts for 770, 790 (SN - LV0790G790000) Tractors
BW15357	Oil line conversion kit for 770, 790 (SN - LV0790G790000) Tractors

300X Loader

Bundle	Description
BW15204	Mounting frame for 4210, 4310, 4410, 4200, 4300, 4400 Tractors
BW15346	Mounting frame for 855 and 955 Tractors
BW15347	Mounting frame for 870 Tractors
BWA1191	Mounting frame with hoses and parts for 4210, 4310, 4410, 4200, 4300, 4400 Tractors
BWA1192	Mounting frame with hoses and parts for 855 and 955 Tractors
BWA1193	Mounting frame with hoses and parts for 870 Tractors
BW15357	Oil line conversion kit for 855, 870, and 955 Tractors

300CX Loader

Bundle	Description
BW15204	Mounting frame for 4310, 4410, 4300, 4400 Tractors
BW15347	Mounting frame for 990, 970, 1070 Tractors
BWA1200	Mounting frame with hoses and parts for 4310, 4410, 4300, 4400 Tractors
BWA1201	Mounting frame with hoses and parts for 990 (SN LV990G590001 -) Tractors
BWA1202	Mounting frame with hoses and parts for 970, 990 (SN - LV990G590000) and 1070 Tractors
BW15359	Oil line conversion kit for 970, 990 (SN - LV990G590000) and 1070 Tractors

HOOD GUARD

A hood guard can be ordered for a tractor without ordering a loader.

- Protects front of tractor while operating the loader.
- Bolt-on design stays with tractor when loader is removed.

Note: A hood guard is included as standard equipment when ordering a loader.

300 Loader

Bundle	Description
BW15350	Hood guard for 770 and 790 Tractors

300X Loader

Bundle	Description
BW14378	Hood guard for 4210, 4310, 4410, 4200, 4300, 4400 Tractors
BW15351	Hood guard for 855 and 955 Tractors
BW15416	Hood guard for 870 Tractors

300CX Loader

Bundle	Description
BW114378	Hood guard for 4310, 4410, 4300, 4400 Tractors
BW15416	Hood guard for 970, 990 and 1070 Tractors

GRAPPLE BUCKET (300CX only)

Popular attachment with commercial and municipal customers. Used to clear debris and grasp irregular shaped material.

Notes:

- 1) Requires tractor with three SCVs.
- 2) Requires Code 9049, third function hydraulic lines and hoses.
- 3) Attachment does have dual attaching pins for use with 500 Series loaders as well.

Bundle	Description
BW15272	Grapple bucket

4-IN-1 BUCKET (300CX only)

Used by commercial operators, farmers, and homeowners.

The bucket can be used to load, scrape, blade, and clamp material.

Bucket opens in the center using two cylinders to clamp material.

Notes:

- 1) Requires tractor with three SCVs.
- 2) Requires Code 9049, third function hydraulic lines and hoses.

Bundle	Description
BW15325	4-in-1 bucket, 60-in. (1524 mm)
BW15274	4-in-1 bucket, 72-in. (1830 mm)

BOOM-MOUNTED FRONT BLADE



A useful tool for the homeowner, landscaper, or commercial operator for moving dirt, gravel, landscape materials, and snow in light-duty application.



Shown with hydraulic angling kit

Hydraulic angling kit ordered separately.

Bundle	Description
BW15326	72-in. (1830 mm) boom-mounted front blade for 300, 300X and 300CX Loaders
BW15275	84-in. (2130 mm) boom-mounted front blade for 300CX Loader

HYDRAULIC ANGLING KIT FOR FRONT-MOUNTED BLADE

A hydraulic angling kit is available for the 72-in. (BW15326) and 84-in. (BW15275) front- mounted blade when used with a 300CX Loader.

This kit will allow the blade to be hydraulically angled 30 degrees left or right.

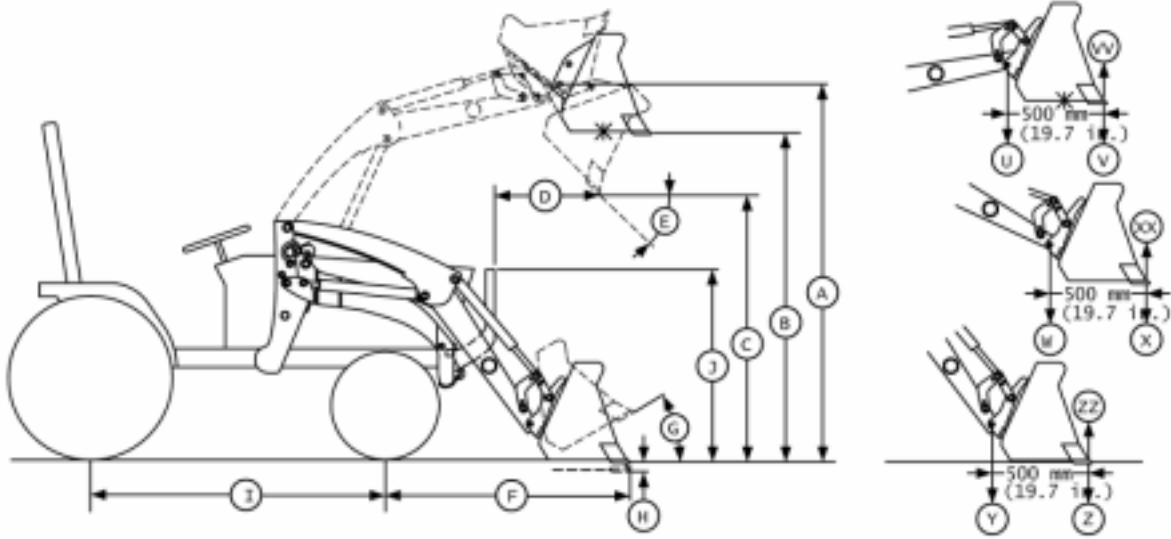
Notes:

- 1) *Requires tractor with three SCVs.*
- 2) *Loader requires third function hydraulic lines and hoses.*

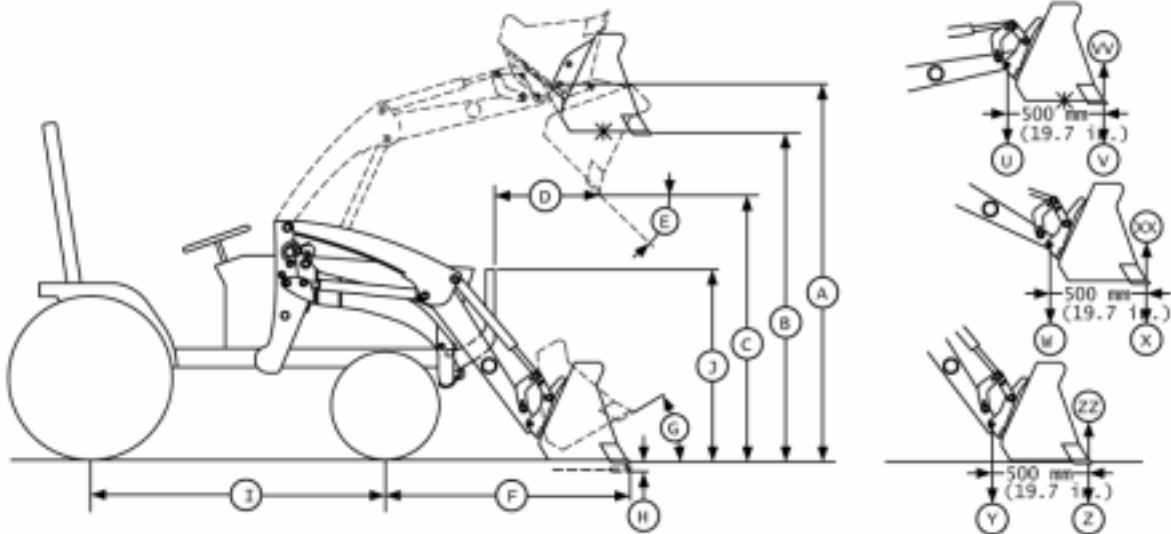
Bundle	Description
BW15327	Hydraulic angling kit for front blades

SPECIFICATIONS

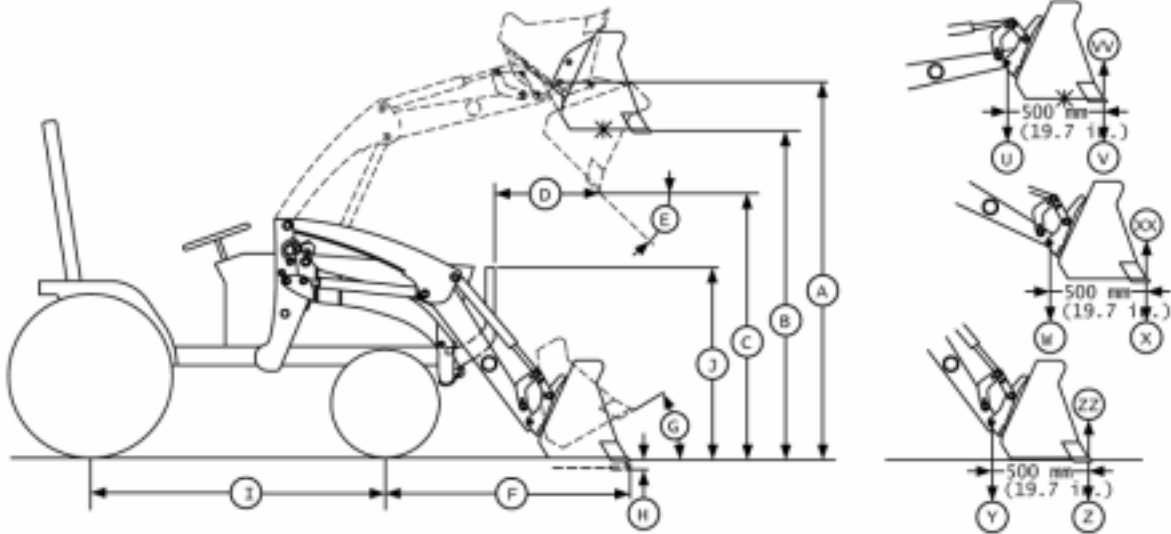
300 Loader



Tractor Model	790	Reach:	
Front tires	7.00-14, 6 PR R1	At max. lift height (D)	845 mm (33-in.)
Rear tires	11.2-14, 6 PR R1	With bucket on ground (F)	1365 mm (53.7-in.)
Wheelbase (WB)	1550 mm (61-in.)	Angles:	
Bucket:		Max. dump angle (E)	40.5 degrees
Width	1550 mm (61-in.)	Max. dump angle at ground	117 degrees
Length (N)	633 mm (25-in.)	Max. rollback angle (G)	21 degrees
Mass	93.8 kg (206.8 lb.)	Rollback angle at full height (SAE)	101 degrees
Hydraulic System:		Overall Height:	
Rated flow	22 L/min. (5.8 gpm)	In carrying position (J)	mm (-in.)
Maximum pressure	14.1 MPA (2045 psi)	Lift Capacity:	
Cycle Times (in seconds):		To max. height at pivot pin (U)	336 kg (740 lb.)
Loader raising time	3.2	To max. height (V)	248 kg (547 lb.)
Loader lowering time	1.63	To 1.5 m (59-in.) at pivot pin (W)	436 kg (961 lb.)
Bucket dumping time	2.71/1.32	To 1.5 m (59-in.) (X)	336 kg (740 lb.)
w/regen			
Bucket rollback time	1.38	With forklift to max. height	kg (lb.)
Maximum Lift Height:		Breakout Force:	
To pivot pin (A)	2864 mm (112.8-in.)	At pivot pin (Y)	7690 N (1728 lb./ft.)
Clearance:		500 mm forward of pivot point (Z)	5470N (1229 lb./ft.)
With level bucket (B)	2090 mm (82-in.)	Bucket Rollback Force:	
With bucket dumped (C)	1727 mm (68-in.)	At max. height (VV)	5160 N (1160 lb./ft.)
Overall Length (WB + F):	2915 mm (114.8-in.)	At 1.5 m (59-in.) lift height (XX)	6450 N (1450 lb./ft.)
Dipping Depth (H):	89 mm (3.5-in.)	At ground level line (ZZ)	4960 N (1115 lb./ft.)

300X Loader

Tractor Model Front tires Rear tires Wheelbase (WB) Bucket: Width Length (N) Mass Hydraulic System: Rated flow Maximum pressure Cycle Times (in seconds): Loader raising time Loader lowering time Bucket dumping time/regen Bucket rollback time Maximum Lift Height: To pivot pin (A) Clearance: With level bucket (B) With bucket dumped (C) Overall Length (WB + F): Dipping Depth (H):	4310 Tractors 25x8.50-14, 6 PR R4 15.00-19, 6 PR R4 1727 mm (68-in.) 1550 mm (61-in.) 633 mm (25-in.) 93.8 kg (206.8 lb.) 32.5 L/min. (8.6 gpm) 17.238 MPA (2500 psi) 2.76 1.69 2.91/1.19 1.72 2284 mm (90-in.) 2123 mm (83.5-in.) 1743 mm (68.6-in.) 3108 mm (122.4-in.) 76 mm (2.9-in.)	Reach: At max. lift height (D) With bucket on ground (F) Angles: Max. dump angle (E) Max. dump angle at ground Max. rollback angle (G) Rollback angle at full height (SAE) Overall Height: In carrying position (J) Lift Capacity: To max. height at pivot pin (U) To max. height (V) To 1.5 m (59-in.) at pivot pin (W) To 1.5 m (59-in.) (X) With forklift to max. height Breakout Force: At pivot pin (Y) 500 mm forward of pivot point (Z) Bucket Rollback Force: At max. height (VV) At 1.5 m (59-in.) lift height (XX) At ground level line (ZZ)	773 mm (30.4-in.) 1381 mm (54.4-in.) 40 degrees 121 degrees 21 degrees 103 degrees mm (-in.) 617 kg (1360 lb.) 453 kg (999 lb.) 771 kg (1700 lb.) 595 kg (1312 lb.) kg (lb.) 12,700 N (2855 lb./ft.) 9,040 N (2032 lb./ft.) 11,820 N (2657 lb./ft.) 14890 N (3347 lb./ft.) 11,650 N (2619 lb./ft.)
---	--	---	--

300CX Loader

Tractor Model Front tires Rear tires Wheelbase (WB) Bucket: Width Length (N) Mass Hydraulic System: Rated flow Maximum pressure Cycle Times (in seconds): Loader raising time Loader lowering time Bucket dumping time/regen Bucket rollback time Maximum Lift Height: To pivot pin (A) Clearance: With level bucket (B) With bucket dumped (C) Overall Length (WB + F): Dipping Depth (H):	4310 Tractors 25x8.50-14, 6 PR R4 15.00-19, 6 PR R4 1727 mm (68-in.) 1550 mm (61-in.) 633 mm (25-in.) 93.8 kg (206.8 lb.) 32.5 L/min. (8.6 gpm) 17.238 MPA (2500 psi) 3.56 2.1 2.96/1.21 1.75 2593 mm (102-in.) 2388 mm (94-in.) 2024 mm (79.6-in.) 3216 mm (126.6in.) 143 mm (5.6-in.)	Reach: At max. lift height (D) With bucket on ground (F) Angles: Max. dump angle (E) Max. dump angle at ground Max. rollback angle (G) Rollback angle at full height (SAE) Overall Height: In carrying position (J) Lift Capacity: To max. height at pivot pin (U) To max. height (V) To 1.5 m (59-in.) at pivot pin (W) To 1.5 m (59-in.) (X) With forklift to max. height Breakout Force: At pivot pin (Y) 500 mm forward of pivot point (Z) Bucket Rollback Force: At max. height (VV) At 1.5 m (59-in.) lift height (XX) At ground level line (ZZ)	562 mm (22-in.) 1489 mm (58.6-in.) 41.1 degrees 128 degrees 31 degrees 119 degrees mm (-in.) 725 kg (1598 lb.) 509 kg (1122 lb.) 964 kg (2125 lb.) 748 kg (1649 lb.) kg (lb.) 14,800 N (3327 lb./ft.) 10,750 N (2416 lb./ft.) 7,950 N (1787 lb./ft.) 13,230 N (2974 lb./ft.) 13,730 N (3087 lb./ft.)
---	--	--	--

BUCKET SPECIFICATIONS

Bucket Type	Width	Struck Capacity	Weight
Materials Bucket	1350 mm (53-in.)	0.17 cu. m (6.0 cu. ft.)	69.5 kg (153 lb.)
Materials Bucket	1550 mm (61-in.)	0.25 cu. m (9.0 cu. ft.)	86.1 kg (190 lb.)
Materials Bucket	1850 mm (73-in.)	0.30 cu. m (10.7 cu. ft.)	101.2 kg (223 lb.)
Heavy-Duty Bucket	1550 mm (61-in.)	0.25 cu. m (9.0 cu. ft.)	111.5 kg (246 lb.)
Heavy-Duty Bucket	1850 mm (73-in.)	0.30 cu. m (10.7 cu. ft.)	128.4 k. (283 lb.)
High-Volume Bucket	1850 mm (73-in.)	0.43 cu. m (15.0 cu. ft.)	158 kg (348 lb.)
High-Volume Bucket	2150 mm (85-in.)	0.5 cu. m (17.4 cu. ft.)	179 kg (394 lb.)
4-in-1 Bucket	1524 mm (60-in.)	0.24 cu. m (8.9 cu. ft.)	256 kg (563 lb.)
4-in-1 Bucket	1830 mm (72-in.)	0.30 cu. m (10.7 cu. ft.)	290 kg (638 lb.)
Grapple Bucket	1830 mm (72-in.)	0.22 cu. m (7.8 cu. ft.)	258 kg (568 lb.)