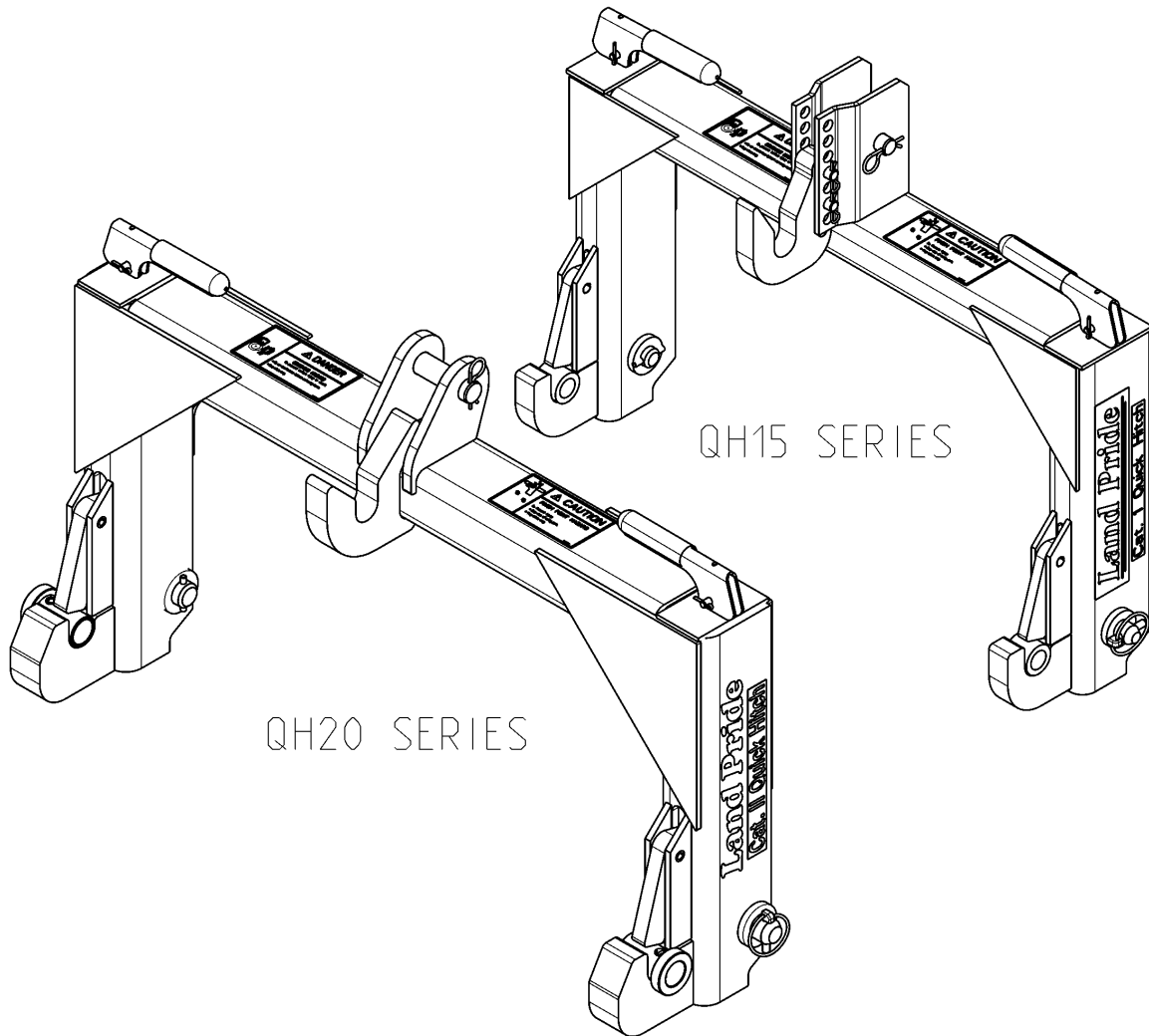


# Quick Hitch

## QH15 & QH20



22131

### **320-003P** **Parts Manual**



Read the Operator's manual entirely. When you see this symbol, the subsequent instructions and warnings are serious - follow without exception. Your life and the lives of others depend on it!

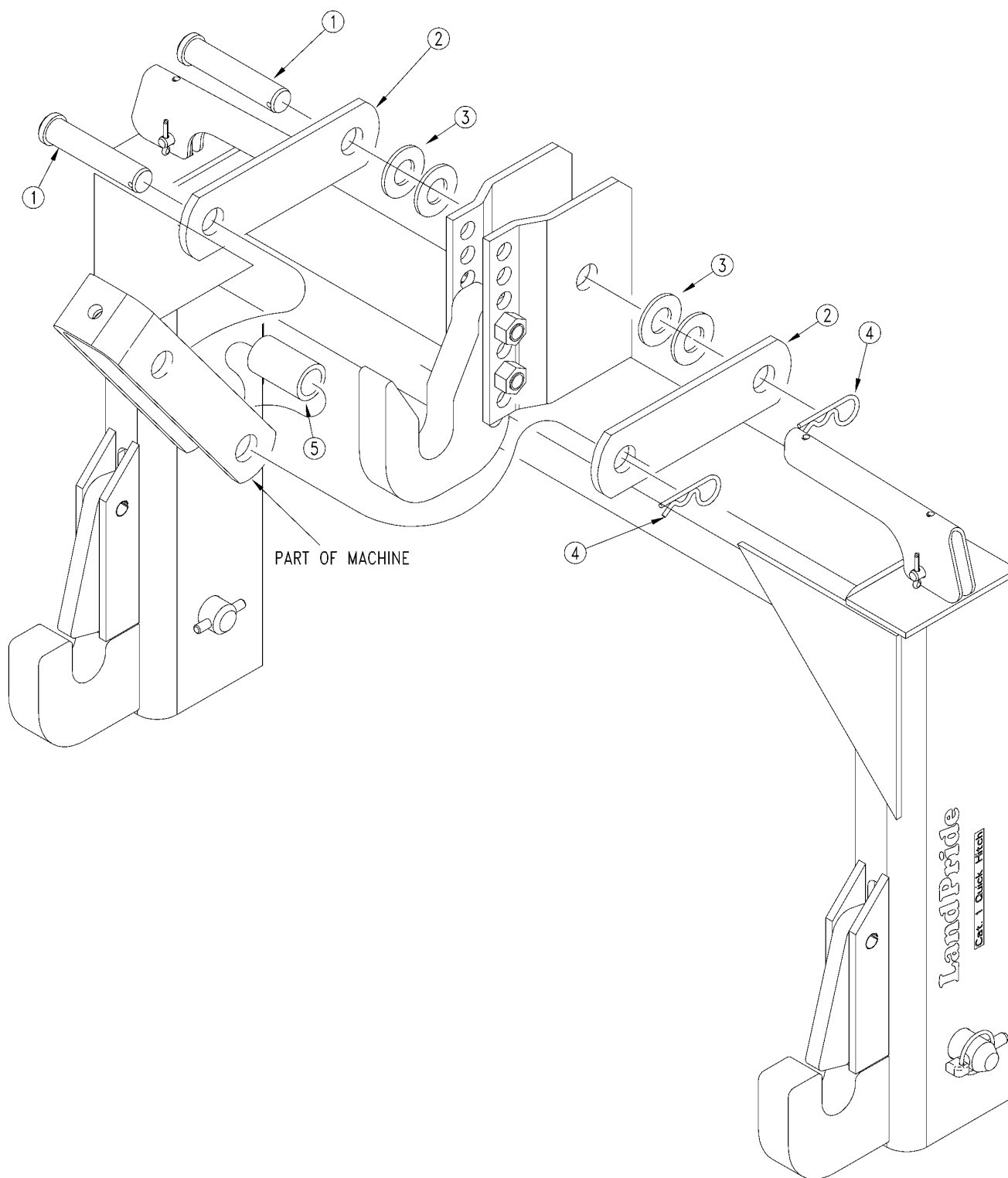
© Copyright 2008 Printed 02/27/08

Cover photo may show optional equipment not supplied with standard unit.



## Floating Top Link QH15

Applies to QH15



18196

***Floating Top Link QH15***

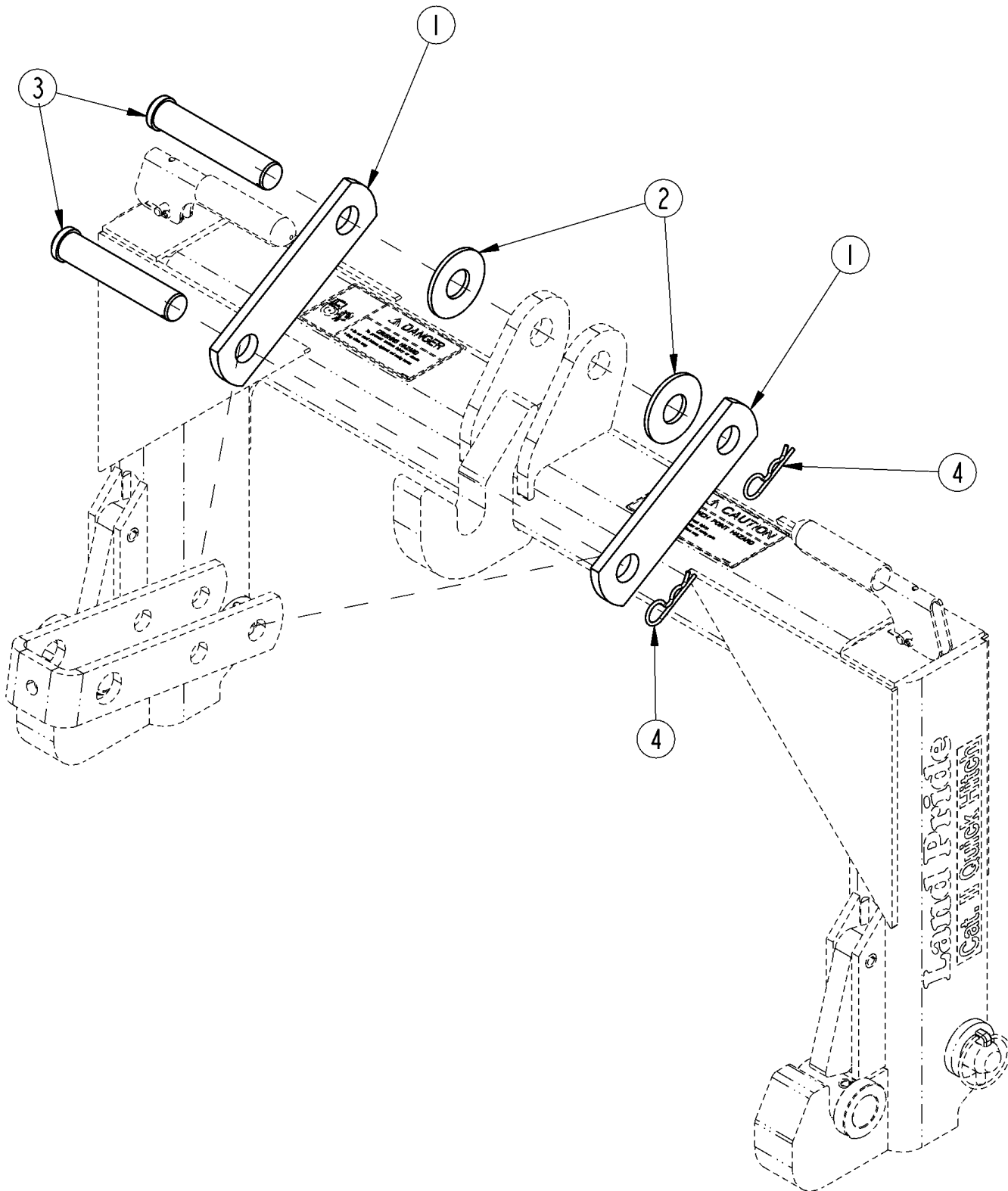
---

**Applies to QH15**

<b>Ref</b>	<b>Part No.</b>	<b>Part Description</b>	<b>Comments</b>	<b>Revision</b>
	dwg18196	Drawing Image Number		
	320-013A	QH FLOATING TOP LINK ASSEMBLY	Includes one each of item 5, two each of items 1, 2, 4 & four each of item 3	
		*		
1.	805-228C	PIN CLEVIS 3/4 X 3 3/4 USEABLE		
2.	320-034D	QH FLOATING TOP LINK BAR		
3.	804-024C	WASHER FLAT 3/4 USS PLT		
4.	805-143C	PIN HAIR COTTER .120 PLT		
5.	320-035D	FLT TP SPCR1.125ODX.81IDX1.94L		

## Floating Top Link QH20

Applies to QH20



24925

***Floating Top Link QH20***

---

**Applies to QH20**

<b>Ref</b>	<b>Part No.</b>	<b>Part Description</b>	<b>Comments</b>	<b>Revision</b>
	dwg24925	Drawing Image Number		
	320-028A	QH20 FLOATING TOP LINK PCKG *		
1.	320-067D	QH FLOATING TOP LINK CAT II		
2.	804-028C	WASHER FLAT 1 USS PLT		
3.	805-131C	PIN CLEVIS 1 X 4 11/16 USABLE		
4.	805-143C	PIN HAIR COTTER .120 PLT		