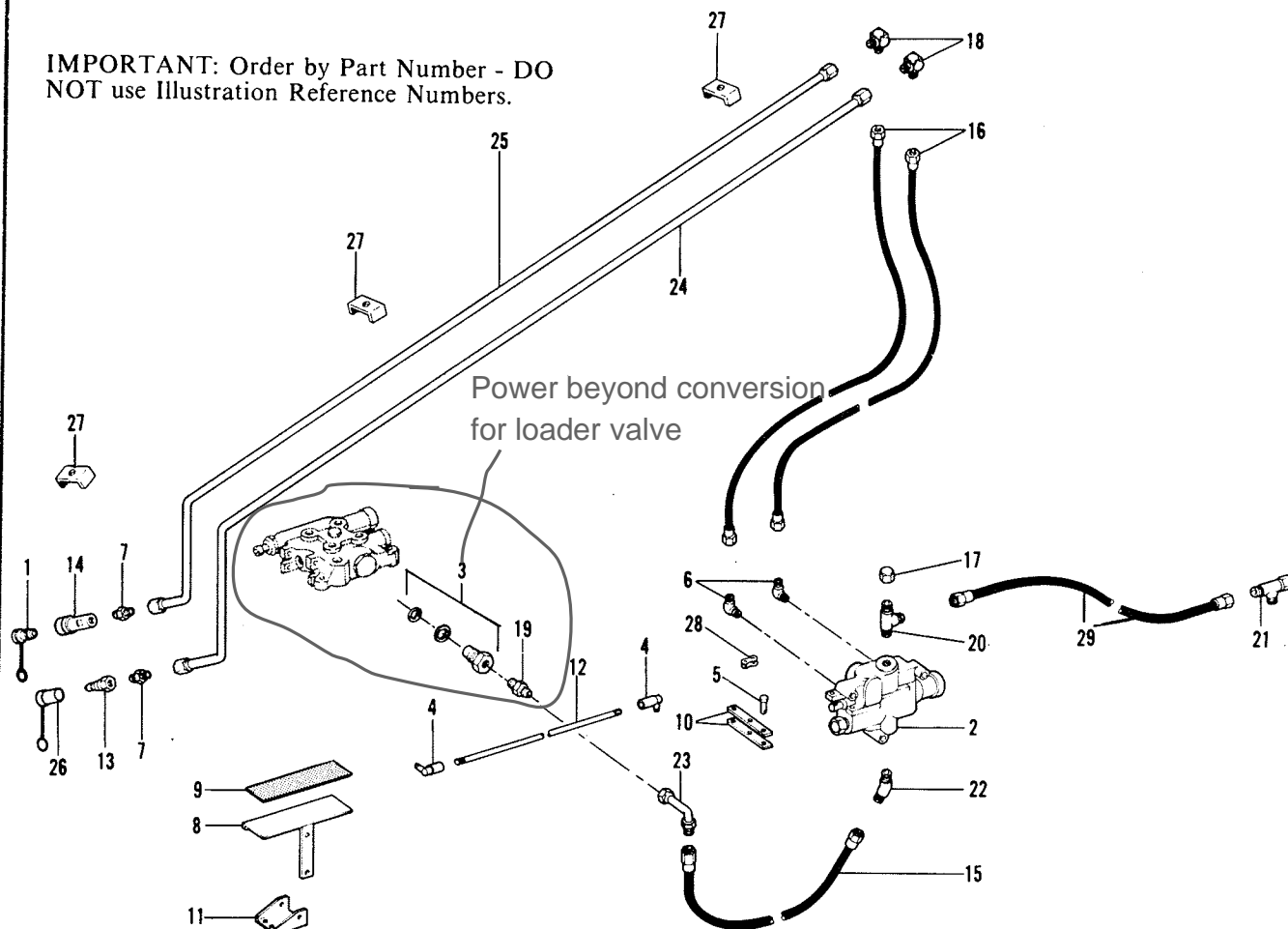


FRONT HYDRAULIC KIT

IMPORTANT: Order by Part Number - DO NOT use Illustration Reference Numbers.



Ref. No.	Part No.	Part Name	No. Req.	Ref. No.	Part No.	Part Name	No. Req.
	800576	Front Hydraulic Kit	1	13	056080	Quick-disconnect - Male	1
		Consists of		14	056081	Quick-disconnect - Female	1
1	051387	Metal Dust Plug	1	15	056082	Hydraulic Pressure Hose	1
2	051392	Hydraulic Valve	1	16	056084	Lift Arm Tube Hose	2
	650535	HHCS 3/8 x 2-1/4	3	17	056085	Cap Nut	1
	(3) 3/8 HN 653010 - (3) 3/8 LW 654026			18	056086	90° Elbow	2
3	051393	Sleeve	1	19	056087	Male Connector	1
4	054770	Ball Joint	2	20	056088	Male Run Tee	1
	(2) 3/8 NF HLN 650840			21	056089	Female Run Swivel Tee	1
	(2) 3/8 LW 654026			22	056090	45° Male Elbow	1
5	054842	Clevis Pin	1	23	056091	90° Swivel Adapter	1
	650590	Cotter Pin 1/16 x 1/2	1	24	056093	Lift Arm Tube - Outside	1
6	054848	90° Male Elbow	2	25	056094	Lift Arm Tube - Inside	1
7	054850	Male Connector - Straight	2	26	056104	Dust Cap	1
8	056073A	Pedal Assembled	1	27	059453	Tube Clamp	3
	650493	HHCS 3/8 x 2-3/4	1		650789	HHCS 5/16 x 4-1/2	3
	(1) 3/8 HLN 650805				(3) 5/16 HN 653007 - (3) 5/16 LW 654024		
9	056076	Non-skid Strip	1	28	062271	Chain Link	1
10	056077	Valve Lever	2	29	069567	Valve to Cooler Hose	1
11	056078	Pedal Pivot Bracket	2				
	650487	HHCS 5/16 x 1	1				
	(2) 5/16 HN 653007 - (2) 5/16 LW 654024						
12	056079	Control Link	1				
	(2) 3/8 NF HN 650552						

A To order Pedal, specify Part #056074.
To order Pedal Arm, specify Part #056075.