

HDM11S

4.1 General specifications

Technical specification		
Max flow rate	l/min U.S.G.P.M.	45 12
Max continuous operating pressure supply port P Parallel circuit	bar PSI	250* 3600*
Max intermittent peak pressure work port A/B Parallel circuit	bar PSI	320* 4600*
Max back pressure tank port T	bar PSI	30 430
Oil temperature	° C ° F	-10 to 80 14 to 180
Oil viscosity	mm ² /s	16 to 75
Oil filtration	μ	≤ 30

Spool leakage at 100 bar (1450 PSI), Temp. 50° C (120° F), viscosity 27 mm ² /s:		
Maximum	cm ³ /min Cu. In./min	12 0.732
Average	cm ³ /min Cu. In./min	6 0.366
Lower values on demand (to be agreed with our Sales Dept..)		

Number of spools	1 to 6
Adjustable direct operated relief valve (tamper-proof seal available on request)	RV
Load hold check valve in each section	LC
Cartridge Anti-Shock Anti-cavitation and service relief valve	OA-UC-C
Mechanical release check valve	RSM3

4.1.1 Weight (standard version; without options)

Version	kg	lb
HDM11S/1	3.5	7.7
HDM11S/2	5.2	11.45
HDM11S/3	6.9	15.20
HDM11S/4	8.6	18.94

* Higher pressure are admitted depending on the versions and operating conditions, please consult Bucher Reggio Emilia Sales Organisation.

HDM11S/5	10.3	22.69
HDM11S/6	12	26.43

4.1.2 Material specification:

Body: High strength cast-iron.
Spool: Hardened steel and chrome plated
Seals: Buna "N".

4.1.3 Standard features:

- 1) Parallel circuit
- 2) Balanced interchangeable spools (provides minimum leakage, smooth operation)
- 3) Wide selection inlets, work ports, and outlets threaded ports.
- 4) Negative overlapping of the spool.

4.1.4 Optional features available:

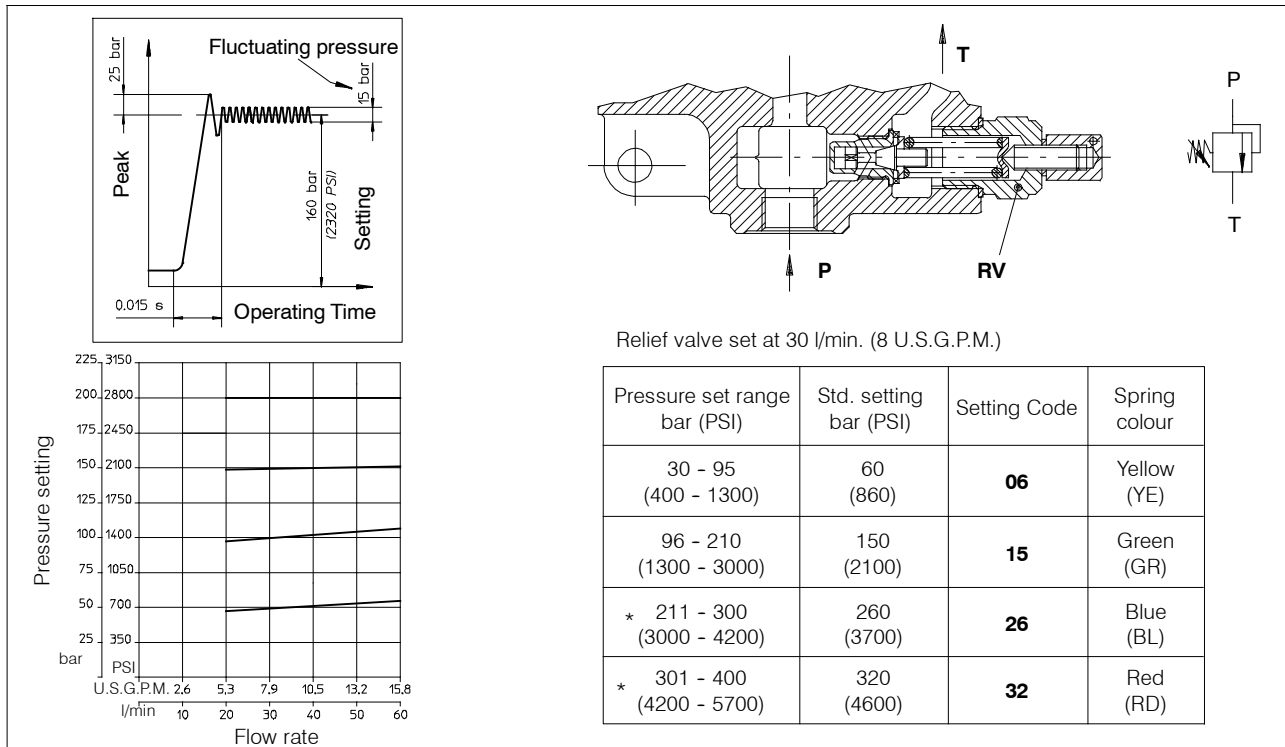
- 1) Open or closed centre positions, 3 or 4 way operations, 3 or 4 position (float position), full open centre (motor spool) and other spool options.
- 2) Carry over.
- 3) Series circuit
- 4) Load Sensing circuit closed centre for variable displacement pump
- 5) Complete lever assembly
- 6) Wide range of positioners

4.1.5 Symbols:

P: inlet port
T: outlet port
A/B: work ports
H.P.C.O.: carry-over
RV: relief valve
P₁T₁: side inlet and outlet ports
 3.1.0.2: spool position
P: pressure line
T: exhaust line
E: centre line (by pass).

HDM11S

4.5 Adjustable direct acting Relief Valve RV



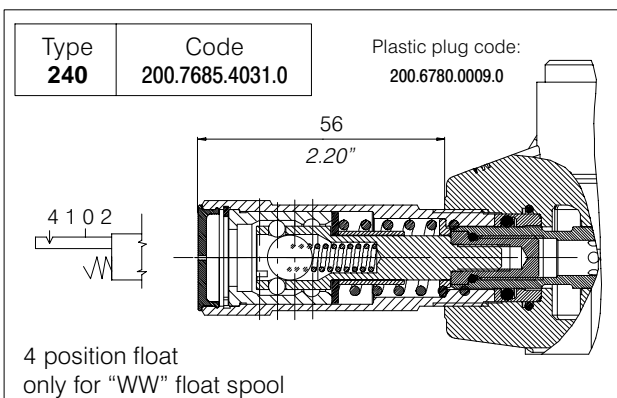
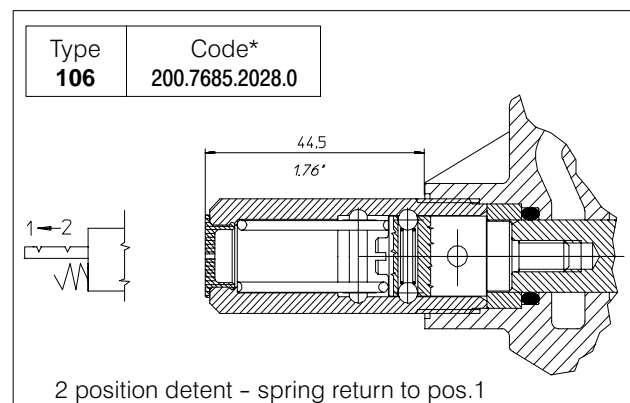
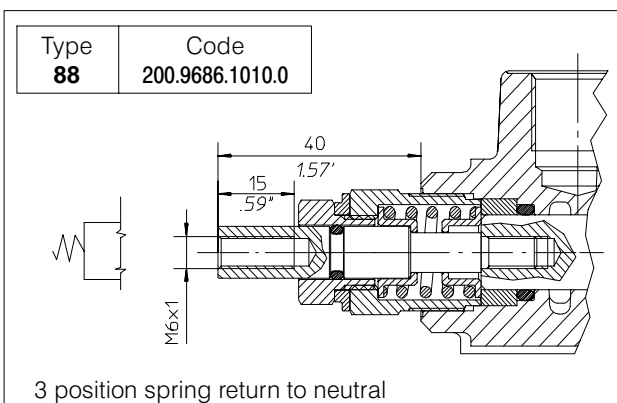
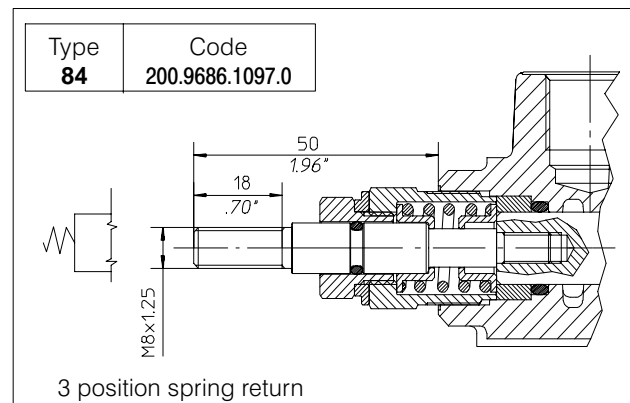
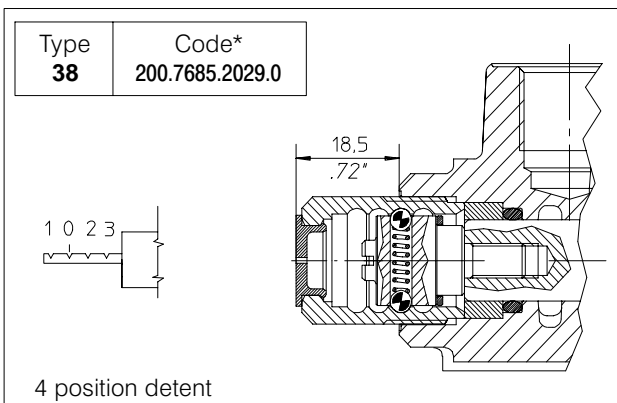
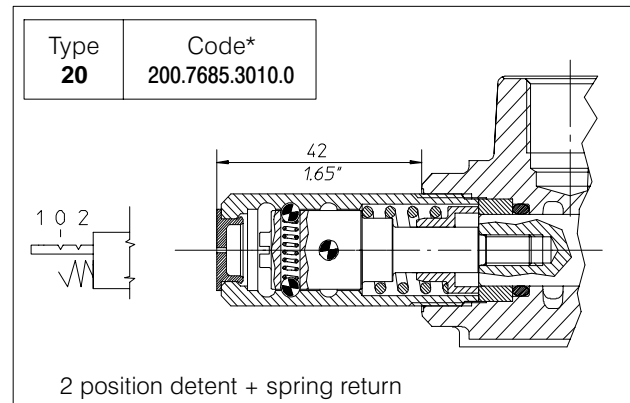
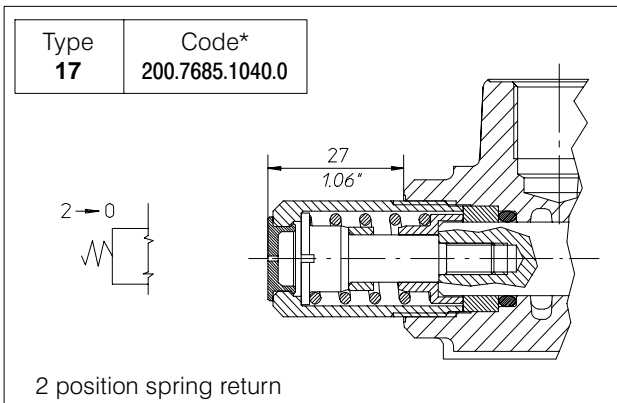
* The maximum operating pressure for each valve series is indicated in the "Technical specification" at the first page of each valve section.

4.6 Spool charts

Spool scheme	Spool features	Type			
	4 way - 3 position A/B closed E open by pass	A AR**		4 way - 3 position series connection	X
	4 way - 3 position A/B-E closed	B		4 way - 3 position A/B to tank in neutral series connection	XC
	4 way - 3 position A/B to tank in neutral E open by pass	C		4 way - 4 position 4 th floating position	Z
	4 way - 3 position A closed B to tank in neutral	D		4 way - 4 positions 4 th floating position	* WW
	3 way - 3 position B closed E open by pass	G GR**		4 way - 3 position A/B closed Load Sensing	** LSA
	4 way - 3 position B closed A to tank in neutral	L		4 way - 3 position A/B to tank in neutral Load Sensing	** LSC
	4 way - 3 position with differential spool in 2 nd position	R**		3 way - 3 position B closed Load Sensing	** LSG
	3 way - 3 position A closed E open by pass	S SR**		3 way - 3 position A closed Load Sensing	** LSS

Note: For availability of L/S versions please contact our Sales Department
 * "WW": special body required (K...), positioner (240) and lever (L192)
 **: special body required (please contact our Sales Dept..)

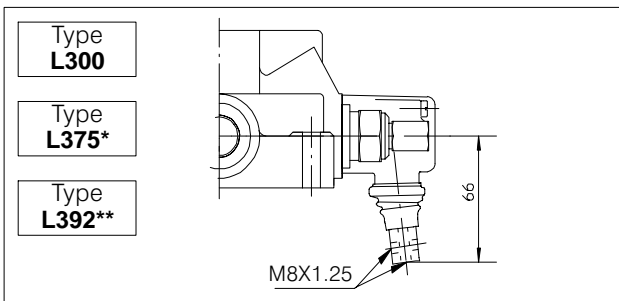
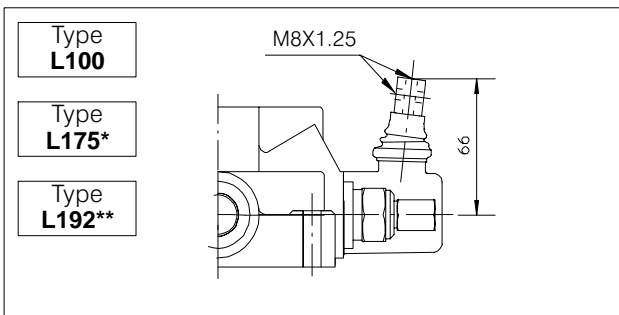
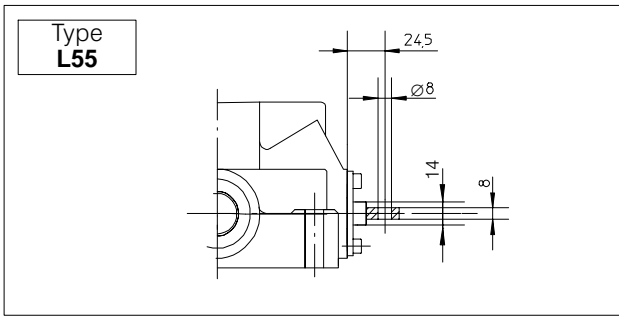
HDM11S



* : code without plastic plug; plastic plug code: 200.6780.0008.0

HDM11S

4.9 Lever styles

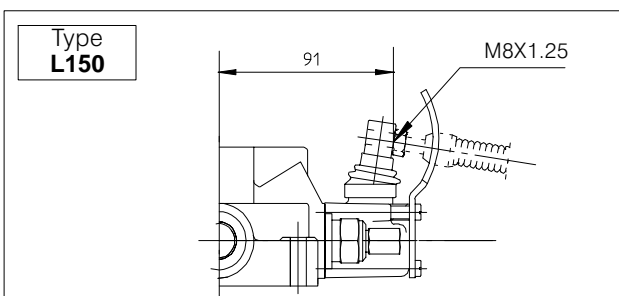
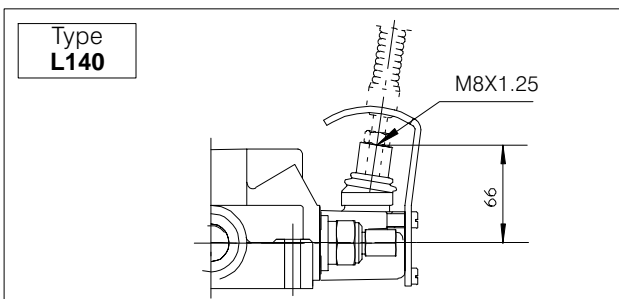


Lo		Type	Code
mm	inches		
150	5.90	AL001	200.7022.1019.0
200	7.87	AL002	200.7022.1003.0
250	9.84	AL003	200.7022.1005.0
300	11.81	AL004	200.7022.1006.0

* L175 - L375 only for "Z" spool application

** L192 - L392 only for "WW" spool application

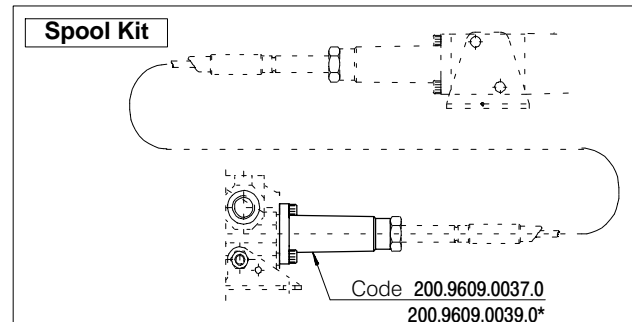
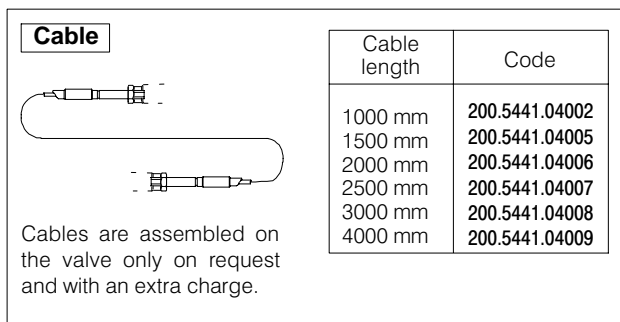
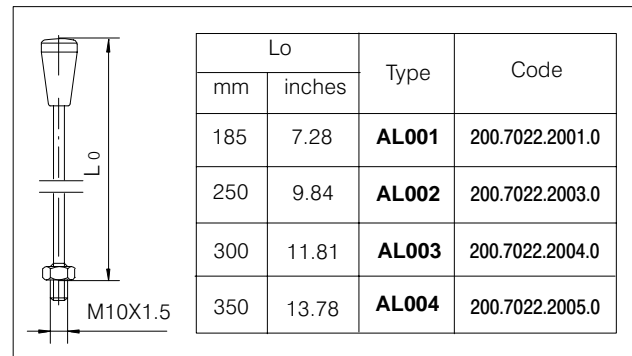
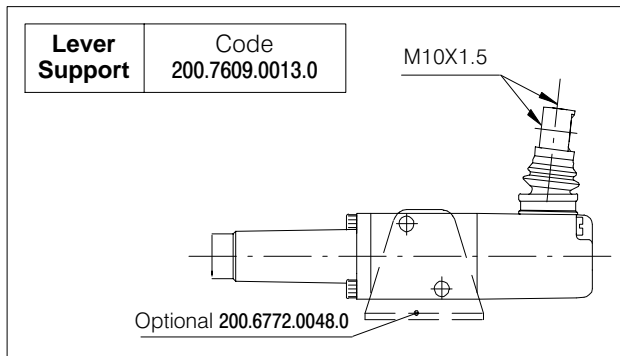
4.9.1 Safety levers



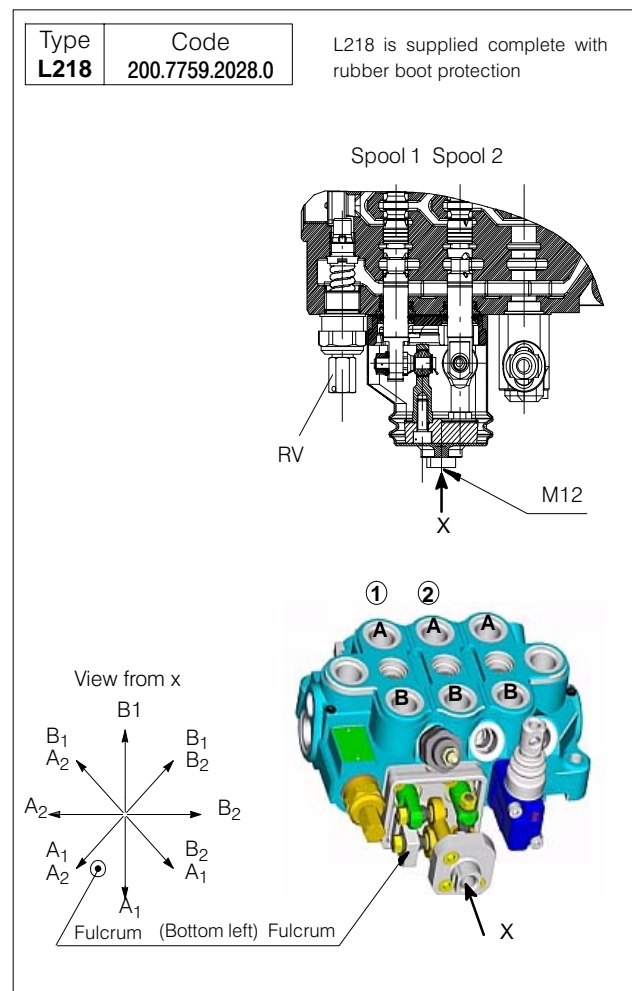
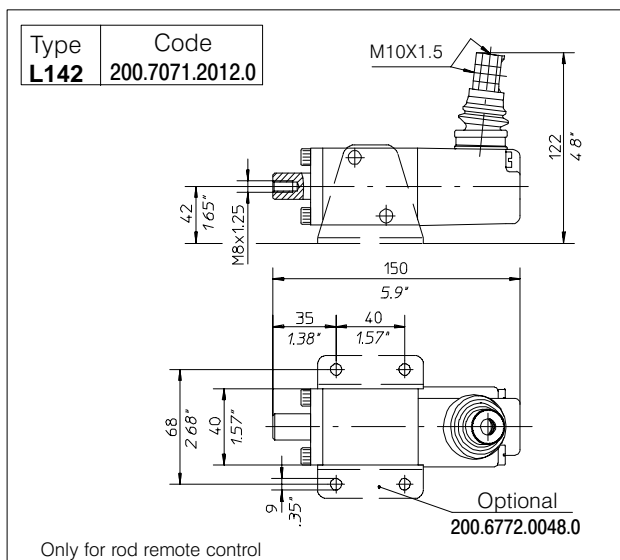
Lo		Type	Code
mm	inches		
160	6.30	AL014	200.7022.1009.0
180	7.08	AL018	200.7022.1011.0

HDM11S

4.9.2 Remote cable control



* only for "Z" spool application



4.9.3 Cross joystick for dual axis spool control

