

Products Affected: 650 and 750
Tractors
Furnished with Assembly: AR99073

Produits affectés: Tracteurs 650
et 750
Fournis avec montage: AR99073

R74230, AR99073



INSTRUCTIONS FOR INSTALLATION OF SELECTIVE CONTROL VALVE
ON TRACTORS EQUIPPED WITH POWER STEERING

INSTRUCTIONS POUR L'INSTALLATION D'UN DISTRIBUTEUR DE COMMANDE
SUR DES TRACTEURS ÉQUIPÉS D'UNE DIRECTION ASSISTÉE

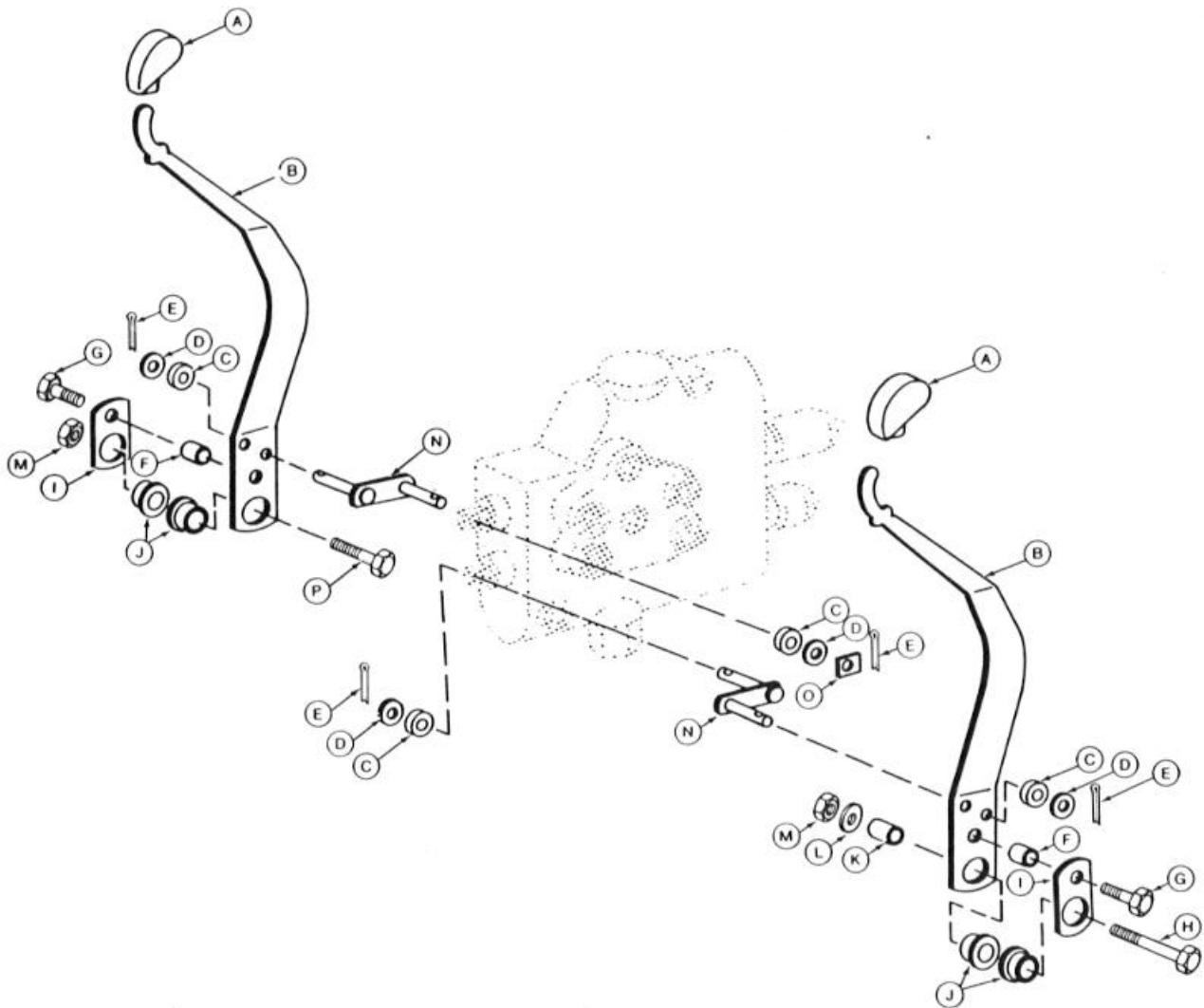
This instruction is divided into eight subsections:

- A. Parts Diagrams and Parts Lists
- B. Parts Removed (if tractor was previously equipped with
Selective Control Valve)
- C. Subassemble Selective Control Valve
- D. Subassemble SCV Levers and Brackett
- E. Install Selective Control Valve to Tractor
- F. Install Transmission Case and Rockshaft Cover Fitting
- G. Install Rear Hydraulic Lines
- H. Install Front Lines and Connectors

Ces instructions sont divisées en huit sous-sections:

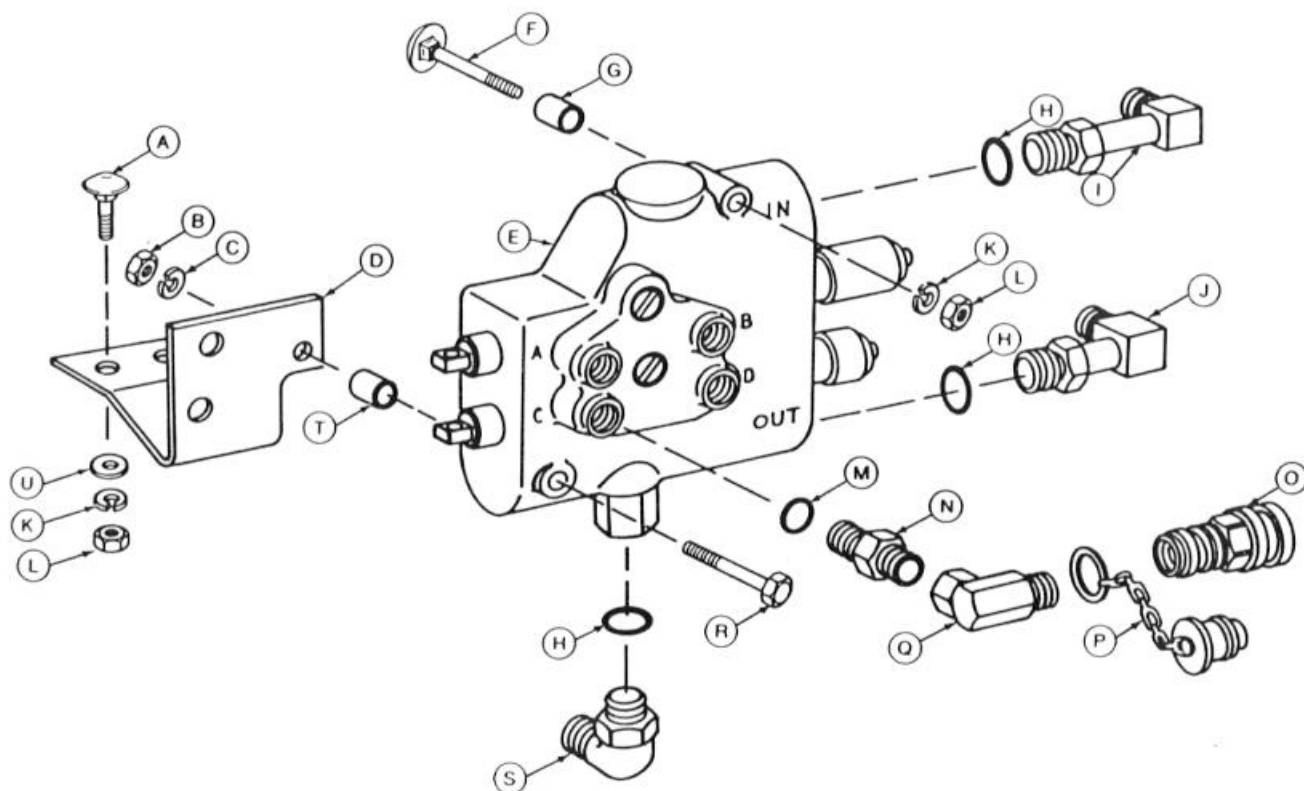
- A. Diagrammes et listes de pièces
- B. Pièces enlevées (si le tracteur était équipé auparavant
d'un distributeur de commande)
- C. Sous-montage de distributeur de commande
- D. Sous-montage de levier et support du distributeur de commande
- E. Installation du distributeur de commande sur le tracteur
- F. Installation du carter de boîte de vitesses et du raccord
de couvercle de l'arbre de basculement
- G. Installation des canalisations hydrauliques arrière
- H. Installation de conduite avant et des connexions

A. PARTS DIAGRAMS AND PARTS LIST:



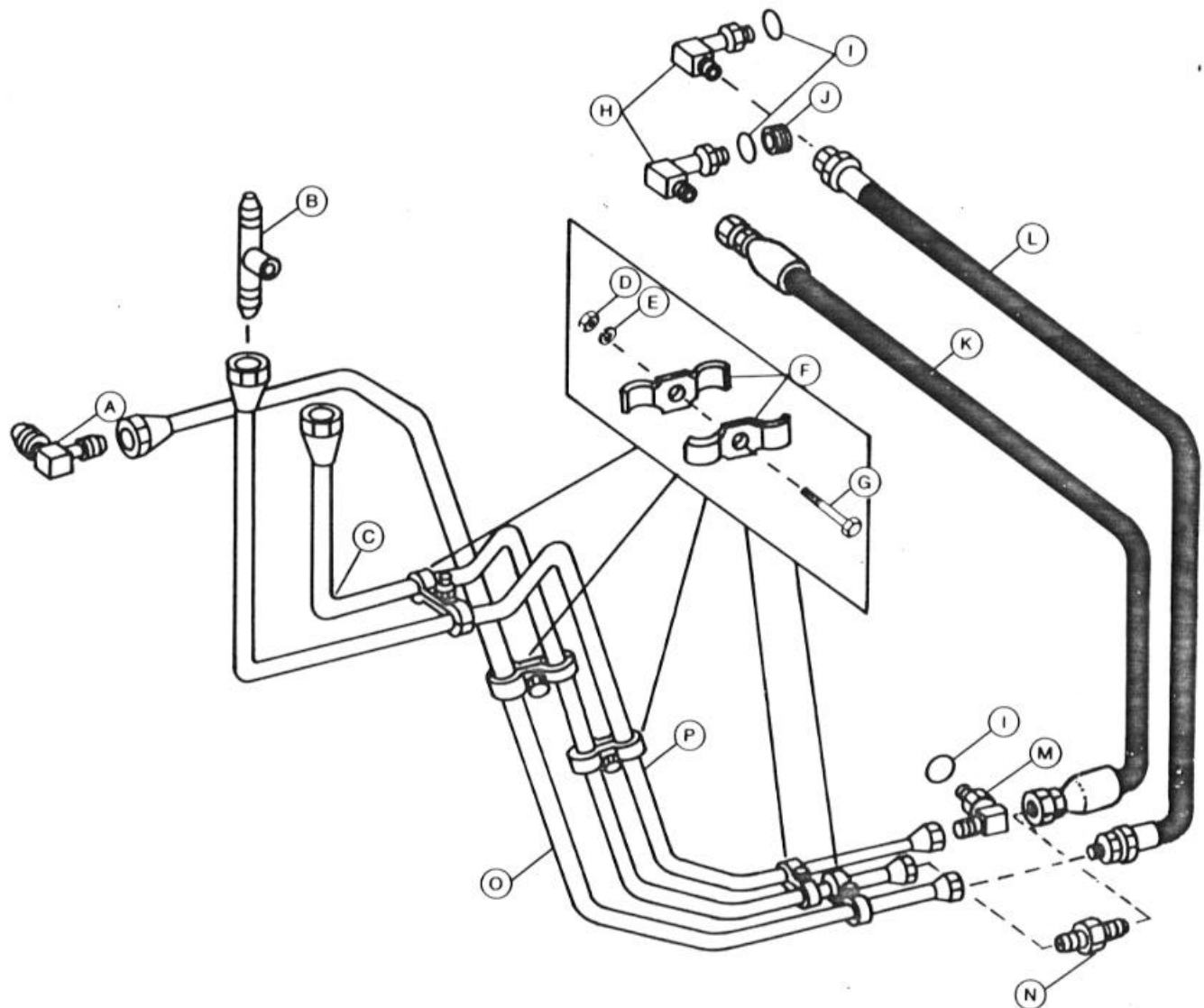
A - R52691	Knob (2 used)
B - R74141	Lever (2 used)
C - R65810	Spacer, .20 x .44 x .120 in. (4 used)
D - 24H1283	Washer, .22 x .50 x .048 in. (4 used)
E - 11H230	Cotter Pin, 1/16 x .375 in. (4 used)
F - 28H86	Spacer, .25 x .31 in. (2 used)
G - 19H2127	Cap Screw, 5/16 x 7/8" (2 used)
H - 19H1820	Cap Screw, 1/2 x 3.0" (2 used)
I - R74214	Brace (2 used)
J - M82224	Bushing (4 used)
K - 28H2561	Spacer, 1/2 x 1-1/4"
L - 24H1625	Washer, .53 x 1.0 x .120 in.
M - 14H1040	Nut, 1/2 in. (2 used)
N - AR99074	Valve Operating Link (2 used)
O - R75755	Float Lockout Lever
P - 19H1755	Cap Screw, 1/2 x 1-3/4"

SELECTIVE CONTROL VALVE LEVERS



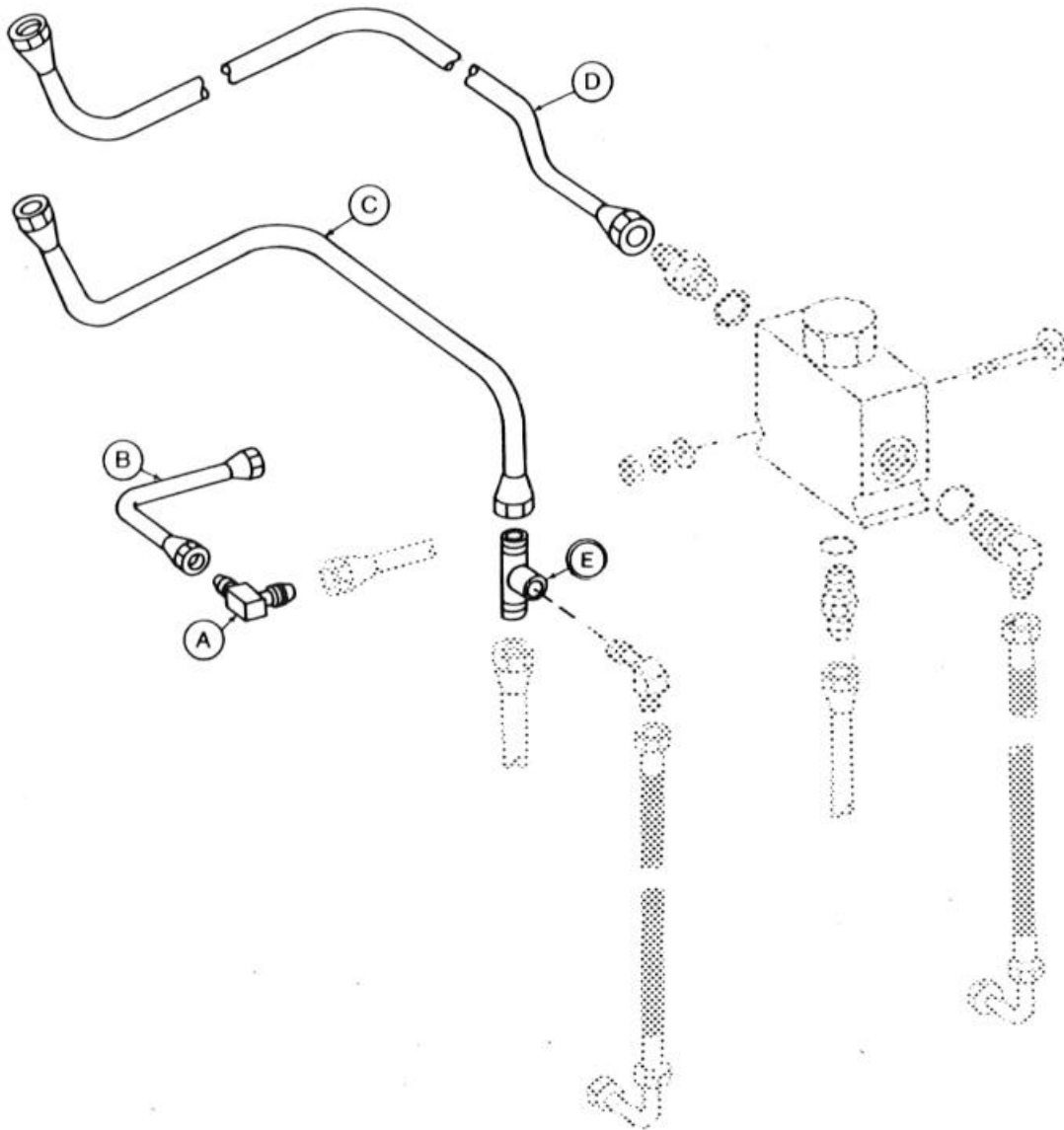
A - 03H1701	Bolt, Rd Hd, 1/4 x 3/4" (2 used)
B - 14H786	Nut, 1/4"
C - 12H302	Lock Washer, 1/4"
D - R74140	Bracket
E - AR92178	Selective Control Valve
F - 03H1815	Bolt, Rd Hd, 1/4 x 2-1/4"
G - T11933	Spacer, .38 x .54"
H - R26375	O-Ring (3 used)
I - AH61439	Elbow, 90°
J - AR27699	Elbow, 90°
K - 12H302	Lock Washer, 1/4" (3 used)
L - 14H786	Nut, 1/4" (3 used)
M - R26448	O-Ring (4 used)
N - T42285	Adapter (4 used)
O - AM37982	Coupler (4 used)
P - AM31275	Dust Plug (4 used)
Q - AP22688	Adapter (4 used)
R - 19H3287	Cap Screw, 1/4 x 2-5/8"
S - AR26763	Elbow, 90°
T - 28H1513	Spacer, 1/4 x 3/8"
U - 24H1286	Washer, .28 x .50 x .060" (2 used)

SELECTIVE CONTROL VALVE CONNECTORS



- | | |
|-------------|--------------------------------|
| A - AR54385 | Elbow, 90° |
| B - H33780 | Special Tee |
| C - AR99378 | Oil Line, Pressure |
| D - 14H812 | Hex Nut, 3/8" (5 used) |
| E - 12H304 | Lock Washer, 3/8" (5 used) |
| F - R42009 | Clamp Half (10 used) |
| G - 19H218 | Cap Screw, 3/8 x 1.0" (5 used) |
| H - AR27699 | Elbow, 90° |
| I - R26375 | O-Ring (3 used) |
| J - 15H275 | Pipe Plug, 1/4" |
| K - AT54270 | Flexible Oil Line |
| L - AH63063 | Flexible Oil Line |
| M - AR26763 | Elbow, 90° |
| N - R34063 | Connector |
| O - AR99077 | Oil Pipe, Beyond |
| P - AR99379 | Oil Pipe, Return |

REAR HYDRAULIC LINES

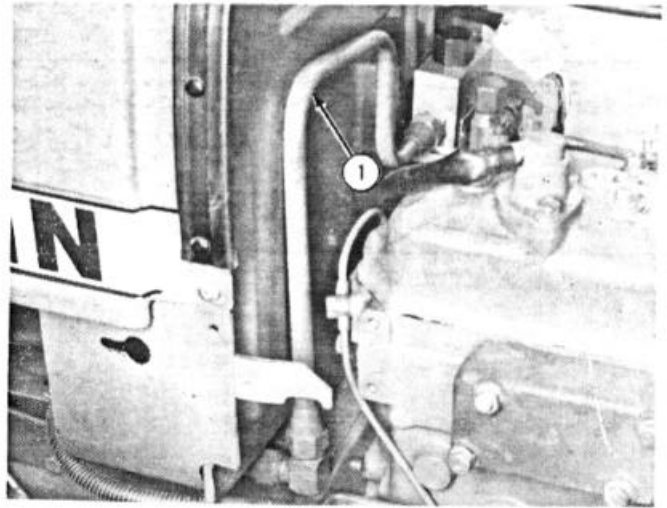


- A - AR54385 Elbow, 90°
- B - AR90549 Oil Pipe, Pressure
- C - AR99078 Oil Pipe, Return
- D - AR99076 Oil Pipe, Pressure
- E - H33780 Special Tee

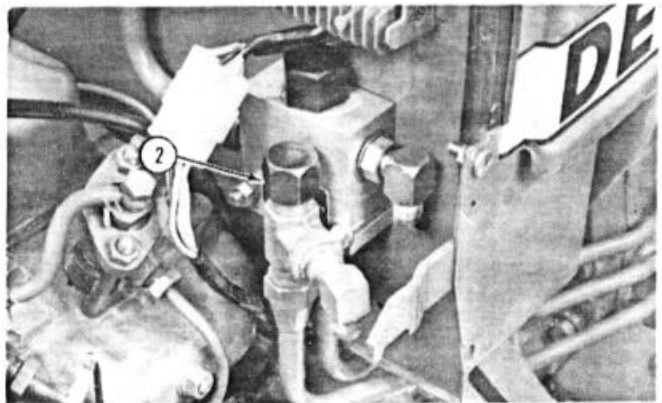
FRONT HYDRAULIC LINES

B. PARTS REMOVED (if tractor was previously equipped with Selective Control Valve):

1. Remove AR99995 beyond line from the side of flow divider valve. Discard line.



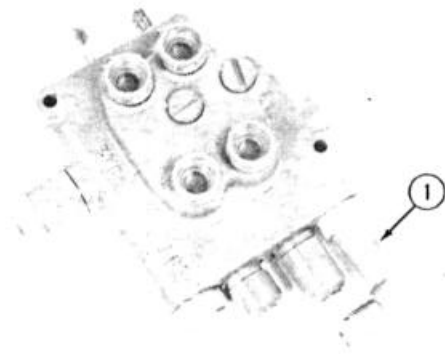
2. Remove cap from the top of return line special tee.



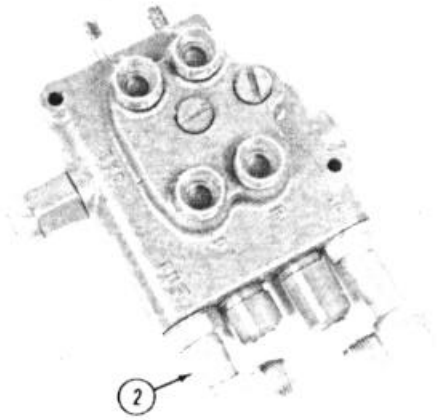
C. SUBASSEMBLY SELECTIVE CONTROL VALVE:

NOTE: Refer to fitting diagram on Page 17, to check the appropriate sizes of the fittings and O-rings.

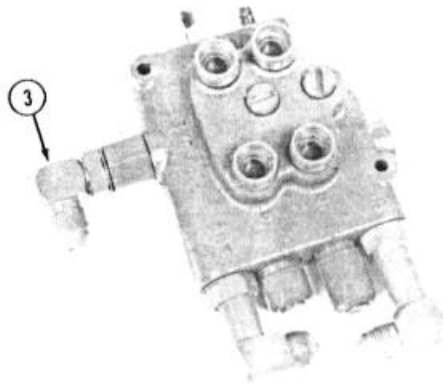
1. Install AH61439 90° elbow and R26375 O-ring in the top of the selective control valve. Do Not tighten elbow.



2. Install AR27699 90° elbow and R26375 O-ring in the top of the selective control valve. Do Not tighten elbow.

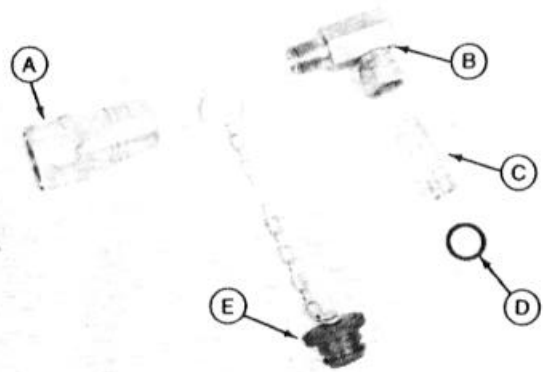


3. Install AR26763 90° elbow and R26375 O-ring in the top of the selective control valve. Do Not tighten elbow.



4. Install quik-coupler receptacle (A) and dust plug (E) to adapter (B).
5. Install connector (C) onto the adapter (B). Do Not tighten connector yet.

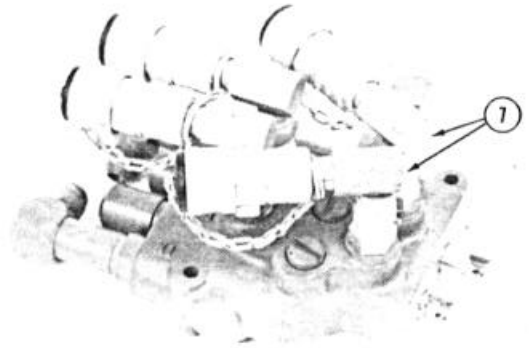
A - Receptacle (4 used)
B - Adapter (4 used)
C - Connector (4 used)
D - O-Ring (4 used)
E - Dust Plug (4 used)



6. Install two of the SCV receptacles and connectors to the selective control valve.



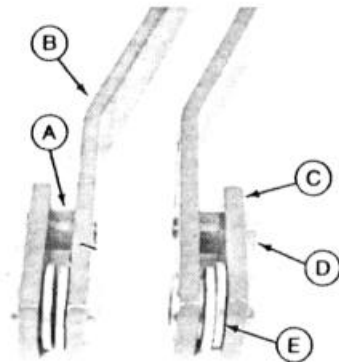
7. Install the remaining two SCV receptacles and connectors to the selective control valve.



D. SUBASSEMBLE SCV LEVERS AND BRACKET:

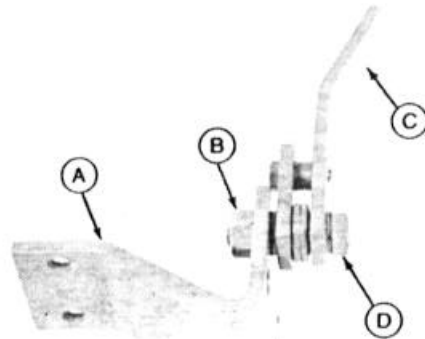
1. Install the lower lever linkage.

- A - Spacer (2 used)
- B - Lever (2 used)
- C - Plate (2 used)
- D - Cap Screw (2 used)
- E - Bushing (4 used)



2. Install inner lever (C) to the SCV mounting bracket (A) using 1-1/2 x 1-3/4 in. cap screw (D) and nut (B).

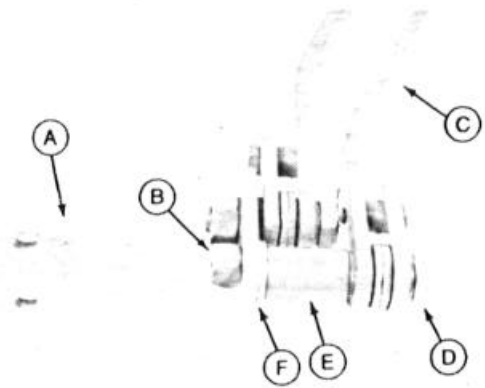
- A - Bracket
- B - Nut
- C - Inner Lever
- D - Cap Screw



3. Install outer lever (C) to the SCV mounting bracket(A) using the following:

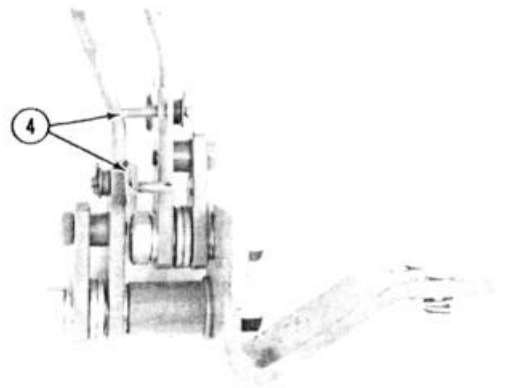
1 - Cap Screw, 1/2 x 3.0"
1 - Spacer, 1/2 x 1-1/4"
1 - Washer, .53 x 1.0 x .120"
1 - Nut, 1/2"

A - Bracket
B - Nut
C - Outer Lever
D - Cap Screw
E - Spacer
F - Washer



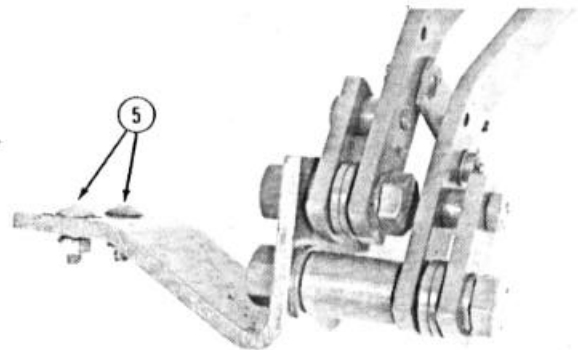
4. Install two lever link assemblies to levers as shown using the following:

2 - Spacers, .20 x .44 x .120"
2 - Washers, .22 x .50 x .048"
2 - Cotter Pins, 1/16 x 3/8"



5. Install two mounting screws to bracket using the following:

2 - Round Head Bolts, 1/4 x 3/4"
2 - Washers, .28 x .50 x .060"
2 - Lock Washers, 1/4"
2 - Hex Nuts, 1/4"

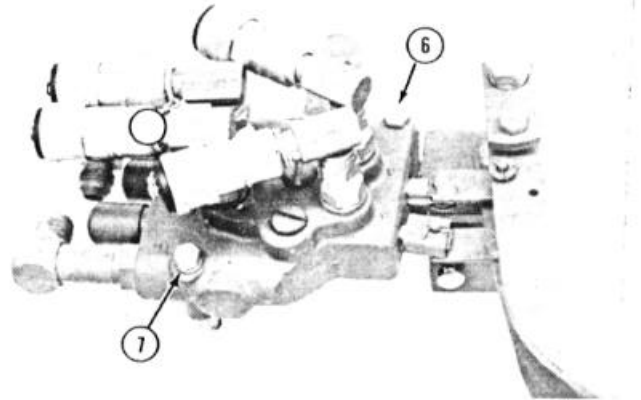


6. Install lower corner of SCV housing to bracket using the following:

- 1 - Cap Screw, 1/4 x 2-5/8"
- 1 - Spacer, 1/4 x 3/8"
- 1 - Lock Washer, 1/4"
- 1 - Hex Nut, 1/4"

7. Install upper mounting screw in SCV housing using the following:

- 1 - Round Head Bolt, 1/4 x 2-1/4"
- 1 - Spacer, .38 x .54"
- 1 - Lock Washer, 1/4"
- 1 - Hex Nut, 1/4"

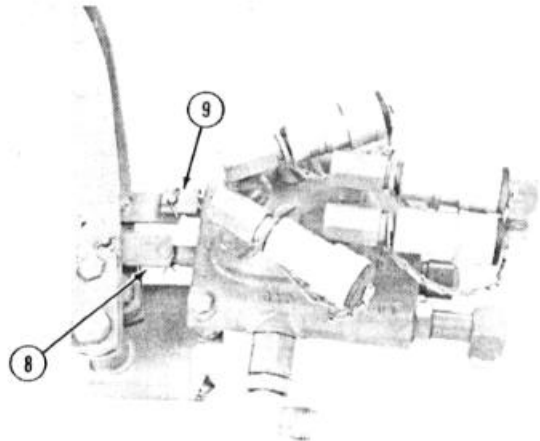


8. Install the outer lever link to the lower SCV spool using the following:

- 1 - Spacer, .20 x .44 x .120"
- 1 - Washer, .22 x .50 x .048"
- 1 - Cotter Pin, 1/16 x 3/8"

9. Install the inner lever link and float lockout lever to the upper SCV spool using the following:

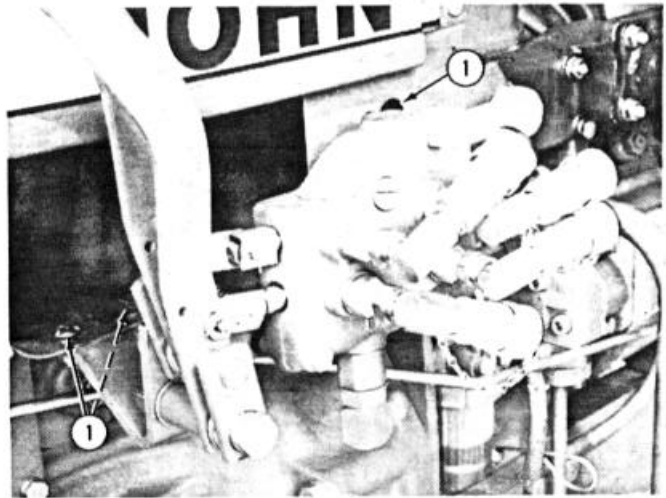
- 1 - Spacer, .20 x .44 x .120"
- 1 - Washer, .22 x .50 x .048"
- 1 - Cotter Pin, 1/16 x 3/8"



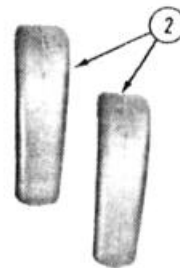
NOTE: Use either the spacer or the washer under the float lock-out lever to give maximum clearance from spool.

E. INSTALL SELECTIVE CONTROL VALVE TO TRACTOR:

1. Install the SCV bracket in slotted holes of tractor. Tighten cap screws.

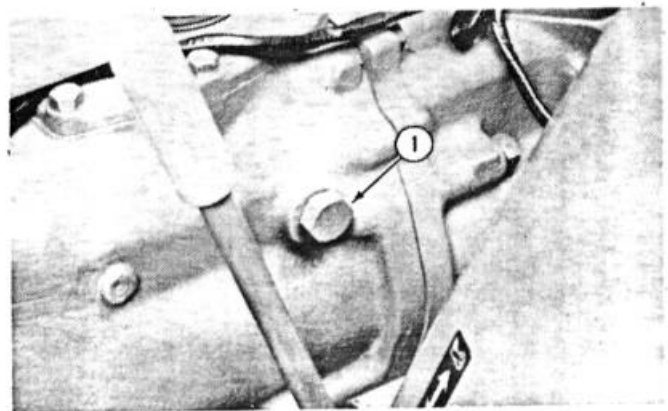


2. Install two lever knobs.

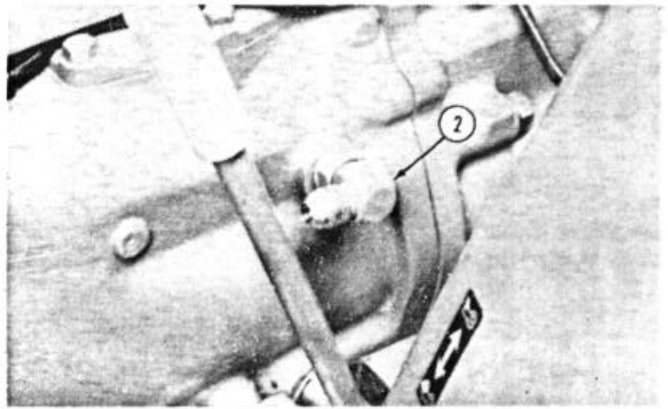


F. INSTALL TRANSMISSION CASE AND ROCK-SHAFT COVER FITTING:

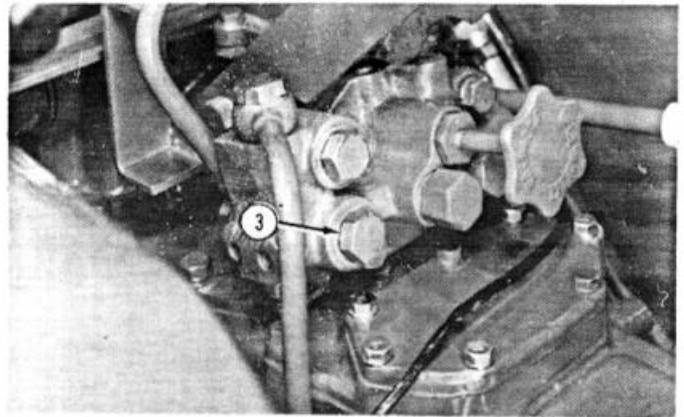
1. Remove transmission case plug from L.H. side of case.



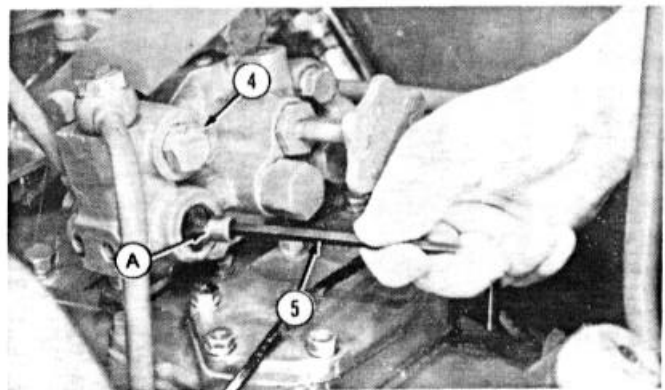
2. Install AR26763 90° elbow and R26375 O-ring into the transmission case port.



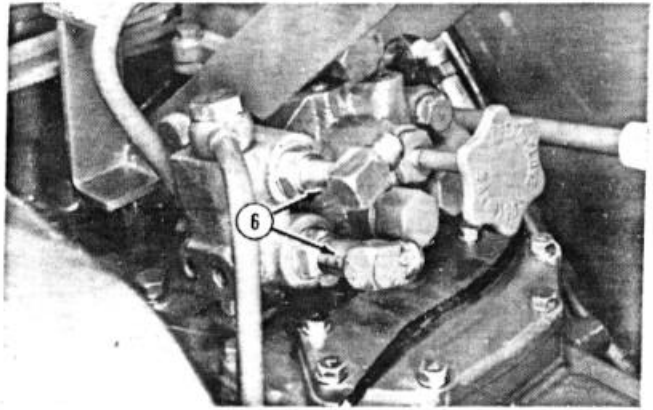
3. Remove hex plug from the lower port of the rockshaft cover.



4. Install 15H275 pipe plug (A) in the lower port of the rockshaft cover.
5. Remove the hex plug from the upper port of the rockshaft cover.



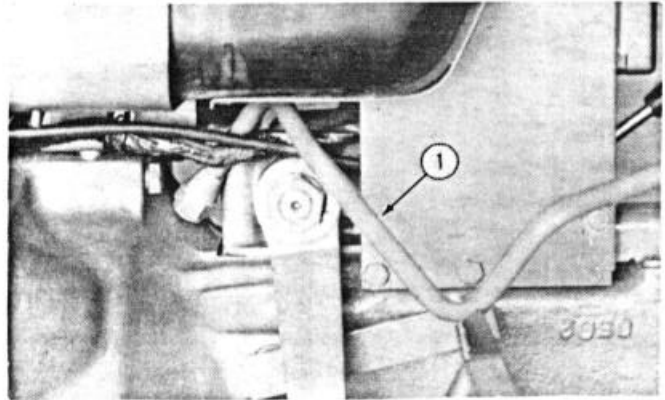
6. Install two AR27699 90° elbows and R26375 O-rings in the rock-shaft cover.



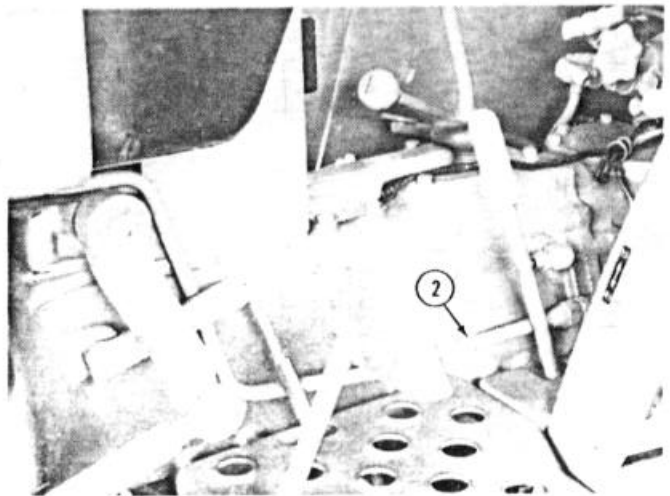
G. INSTALL REAR HYDRAULIC LINES:

IMPORTANT: Before installing each hydraulic line, be sure plastic cap plugs are removed from ends of lines.

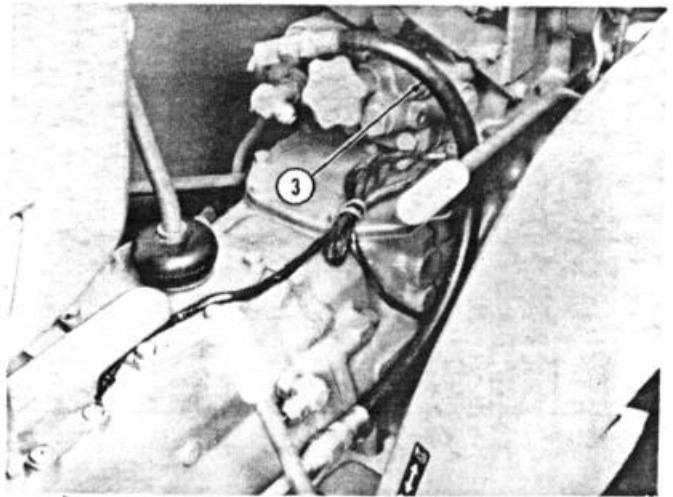
1. Install front end of AR99077 beyond line across the bottom of fuel tank.



2. After routing front end of AR99077 line under the fuel tank, position rear end of line as shown.

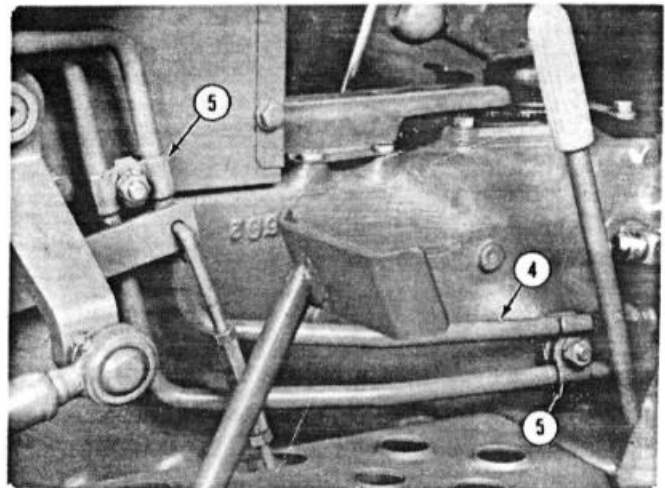


3. Install AH63063 hydraulic hose from rockshaft cover elbow to SCV beyond line.

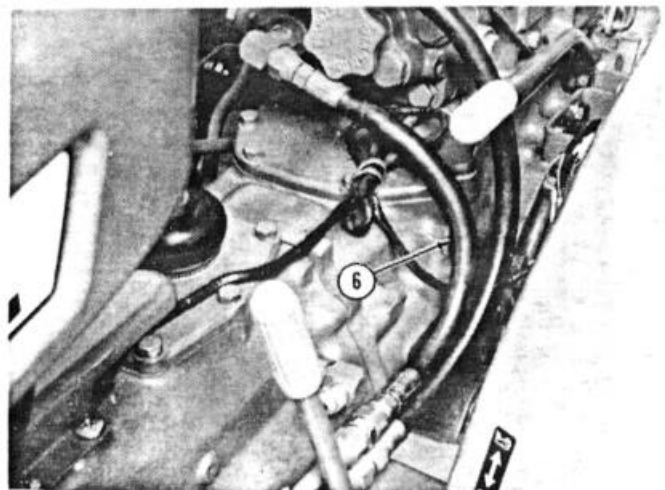


4. Install AR99378 pressure line above the beyond line.
5. Using two clamp sets, clamp the beyond line and pressure lines together. Each clamp set consists of:

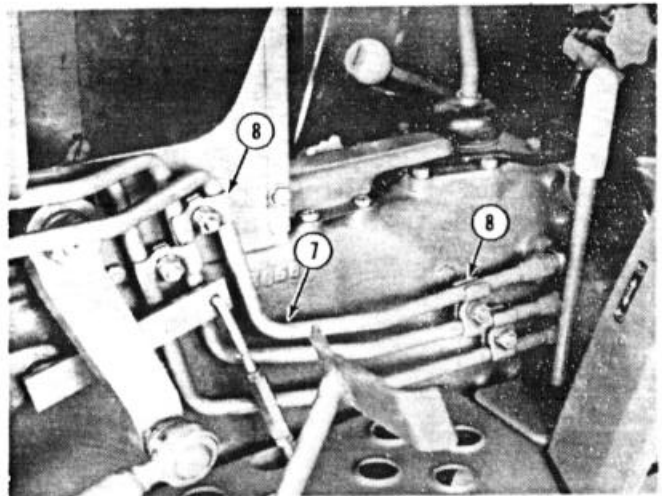
- 2 - Clamps
- 1 - Cap Screw, 3/8 x 1.0"
- 1 - Lock Washer, 3/8"
- 1 - Hex Nut, 3/8"



6. Install AT54270 hydraulic hose from rockshaft cover elbow to SCV pressure line using a R34063 connector.

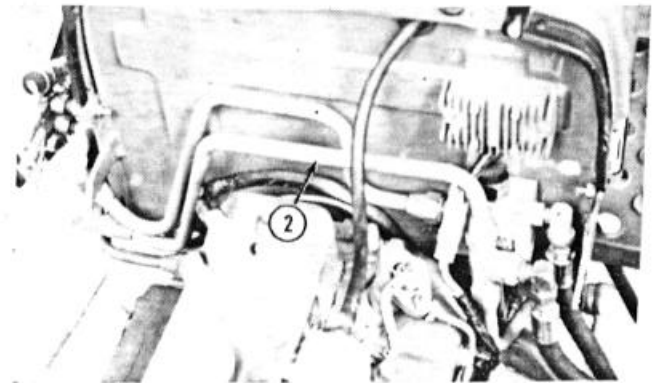
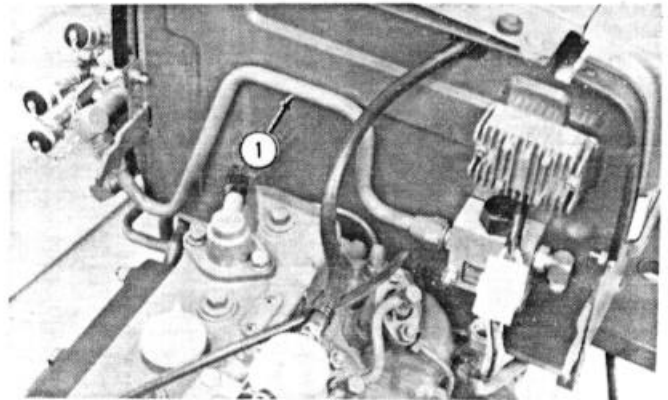


7. Install AR99379 return line above the pressure line and connect to transmission case return elbow.
8. Using two clamp sets, clamp the return line and pressure line together as shown. Do Not tighten clamps yet.

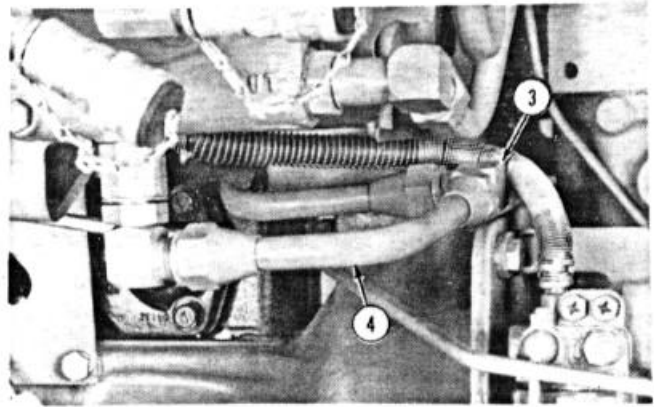


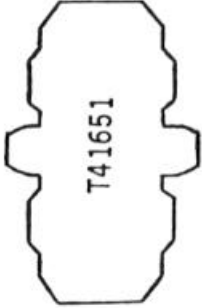


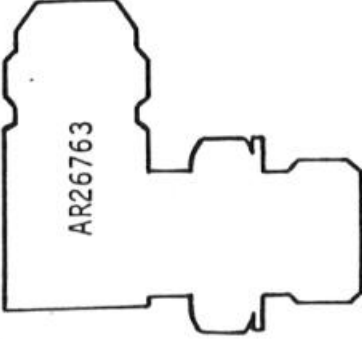

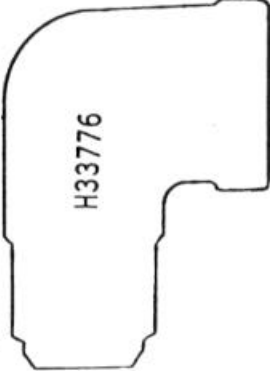
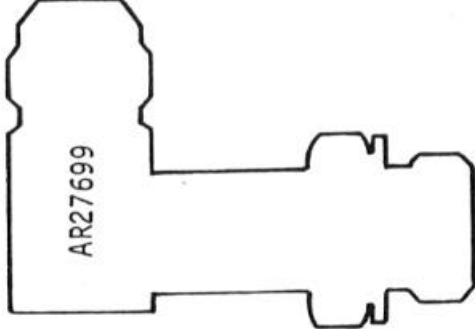

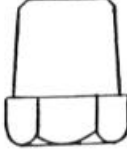
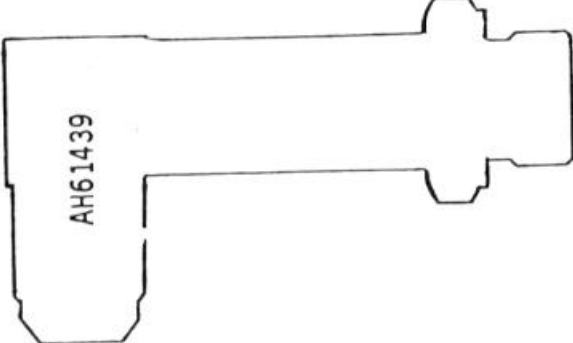

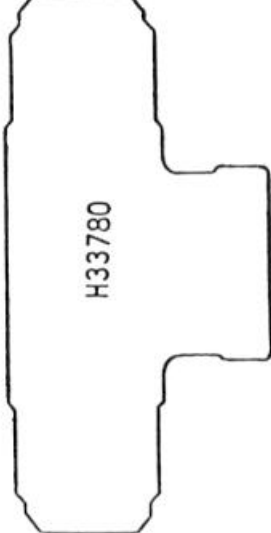
H. INSTALL FRONT LINES AND CONNECTORS:

1. Install AR99076 front pressure line from the flow divider valve connector and the top elbow of the selective control valve.
2. Install AR99078 return line from the special tee to the lower front elbow of selective control valve.



3. Install AR54385 90° elbow to the pressure line.
4. Install AR90549 pressure line from the bottom SCV elbow to the pressure line elbow.
5. Tighten five sets of clamps securing rear hydraulic lines. (Not Shown)



 <p>T41651</p>	 <p>AR54385</p>	 <p>R34063</p>	<p>FULL SCALE REPRESENTATION OF HYDRAULIC FITTINGS & O-RINGS REPRÉSENTATION DES RACCORDS HYDRAULIQUES ET DES JOINTS TORIQUES AUX DIMENSIONS RÉELLES</p>	
 <p>AR26763</p>	 <p>R26375</p>	 <p>H33776</p>		
 <p>AR27699</p>	 <p>R26375</p>	 <p>R30298</p>		
 <p>AH61439</p>	 <p>R26375</p>	 <p>H33780</p>		