

**SPARE PARTS**

**QUICKE  
310 US**



## SPARE PARTS

### LOADER Lastare - Chargeur Frontlader Q 310 Type A,B

System  
US

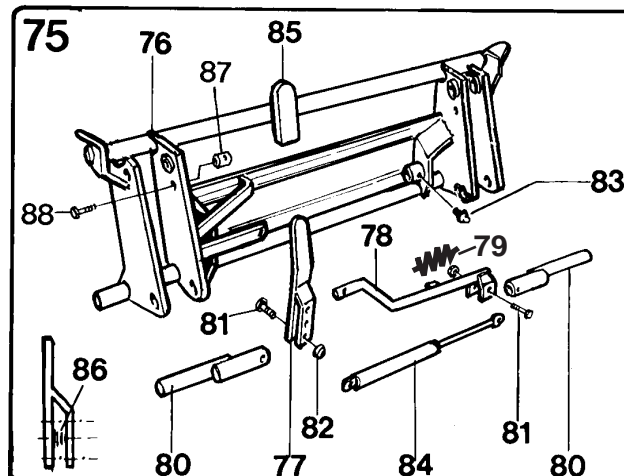
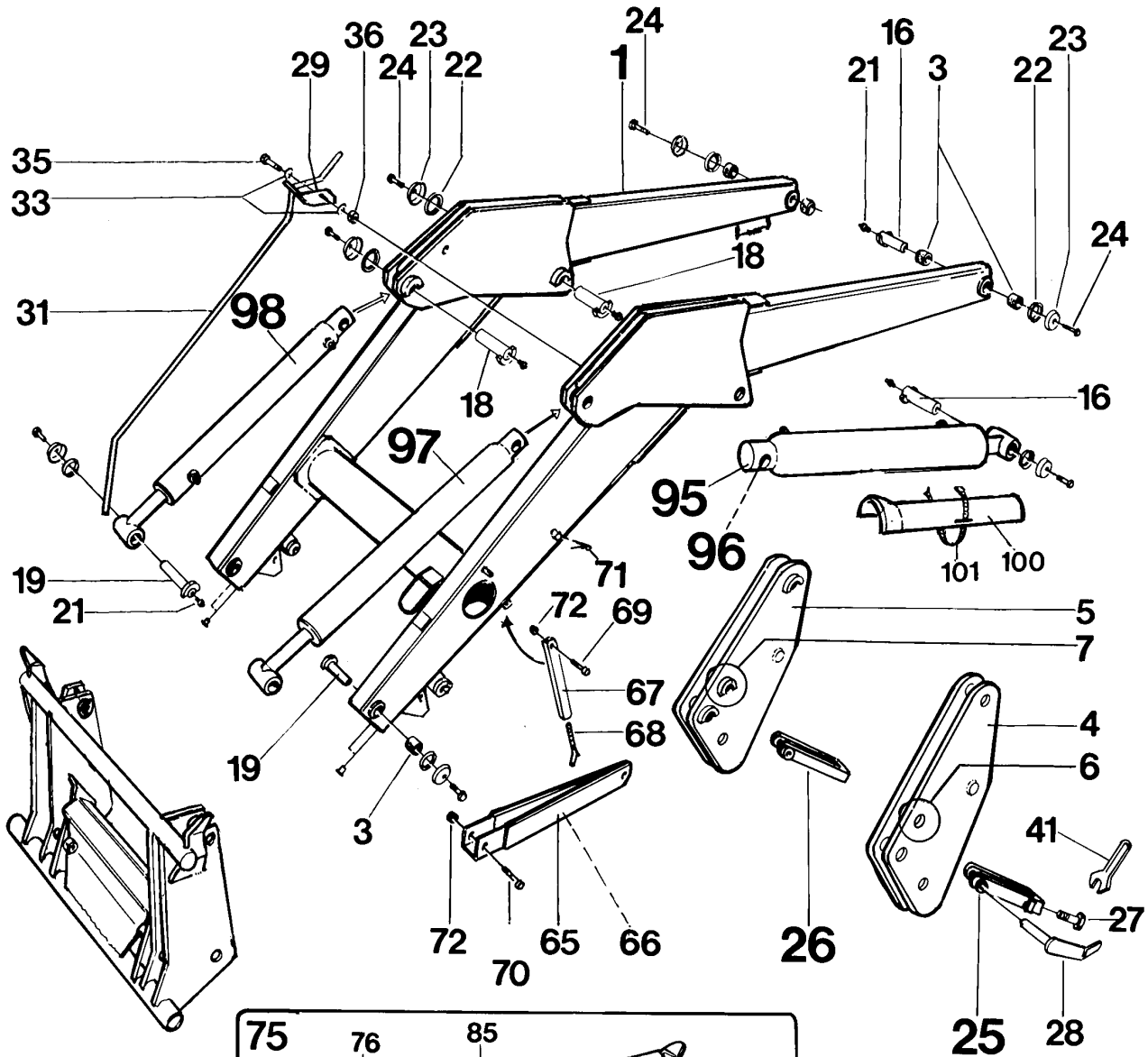
Page No	2	44	310	F	1
Date	97 06 01				

Set - Part No.

**231220**  
**231240**

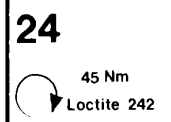
Instr. No.	
Replacing	96 02 01
Design	A. Sj.

R 244 310 C 1-3



### Hydraulic / Rams

Page 2 44 310 (5)





# SPARE PARTS

## LOADER Lastare - Chargeur Frontlader Q 310 Type A,B System US

Page No	2	44	310	F	2
Date	97 06 01				

Set - Part No.

**231220**  
**231240**

Item Pos. Repére Teil	Part No. Best nr. Référence Bestell.Nr.	ENGLISH	SVENSKA	FRANÇAIS	DEUTSCH	Quantity Antal Nombre Anzahl
1	<b>231291</b>	<b>Loader Beam</b>	<b>Lastarm</b>	<b>Bras</b>	<b>Laderschwinge</b>	<b>1</b>
3	5018515	Bushing	Bussning	Coussinet	Buchse	(8)
4	231293	1* Bearing Box , L	Lagerlåda, V	Potence, G	Lagergehäuse, L	1
5	231294	1* Bearing Box , R	Lagerlåda, H	Potence, D	Lagergehäuse, R	1
6	232293	2* Bearing Box , L	Lagerlåda, V	Potence, G	Lagergehäuse, L	1
7	232294	2* Bearing Box , R	Lagerlåda, H	Potence, D	Lagergehäuse, R	1
16	1116441	Pivot Pin	Lagertapp	Axe d'articulation	Lagerbolzen	Ø 30 x 97
18	1116443	Pivot Pin	Lagertapp	Axe d'articulation	Lagerbolzen	Ø 30 x 84
19	1116444	Pivot Pin	Lagertapp	Axe d'articulation	Lagerbolzen	Ø 30 x 119
21	5023005	Greaser	Smörjnippel	Graisser	Schmiernippel	M 10 x 1
22	5022089	Rubber Ring	Gummiring	Bague en caoutchouc	Gummiring	32 x 53
23	142893	Locking Cover	Låslock	Capot de blocage	Schloßdeckel	
24	5002076	Screw	Skruv	Vis	Schraube	M6S 10 x 20
25	<b>258141</b>	<b>Retaining Fork, L</b>	<b>Spännngaffel, V</b>	<b>Bride de serrage,G</b>	<b>Spannbügel, L</b>	<b>1</b>
26	<b>258142</b>	<b>Retaining Fork, R</b>	<b>Spännngaffel, H</b>	<b>Bride de serrage,D</b>	<b>Spannbügel, R</b>	<b>1</b>
27	5005327	Screw	Skruv	Vis	Schraube	M6S 24 x 50 (1)
28	1116525	Latch Bolt	Låstapp	Boulon de verrouillage	Sperrbolzen	
29	232166	Level Indicator	Lägesanvisare	Indicateur-d'Horizontalité	Horizontal-anzeiger	2
31	232165	Rod	Stång	Barre	Stange	
33	5013110	Washer	Bricka	Rondelle	Scheibe	BRB 10,5 x 22
35	5002077	Screw	Skruv	Vis	Schraube	M6S 10 x 30
36	5011054	Nut	Mutter	Écrou	Mutter	M6M 10

1\*) Loader Q-310 Type (A) / Lastare Q-310 Typ (A) / Chargeur Q-310 Type (A) / Frontlader Q-310 Typ (A).

2\*) Loader Q-310 Type (B) / Lastare Q-310 Typ (B) / Chargeur Q-310 Type (B) / Frontlader Q-310 Typ (B).



## SPARE PARTS

### LOADER Lastare - Chargeur Frontlader Q 310 Type A,B

System  
US

Page No	2	44	310	F	3
Date	97 06 01				

Set - Part No.

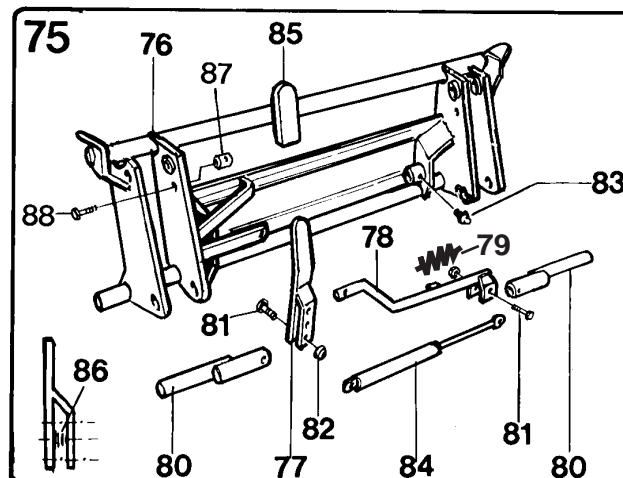
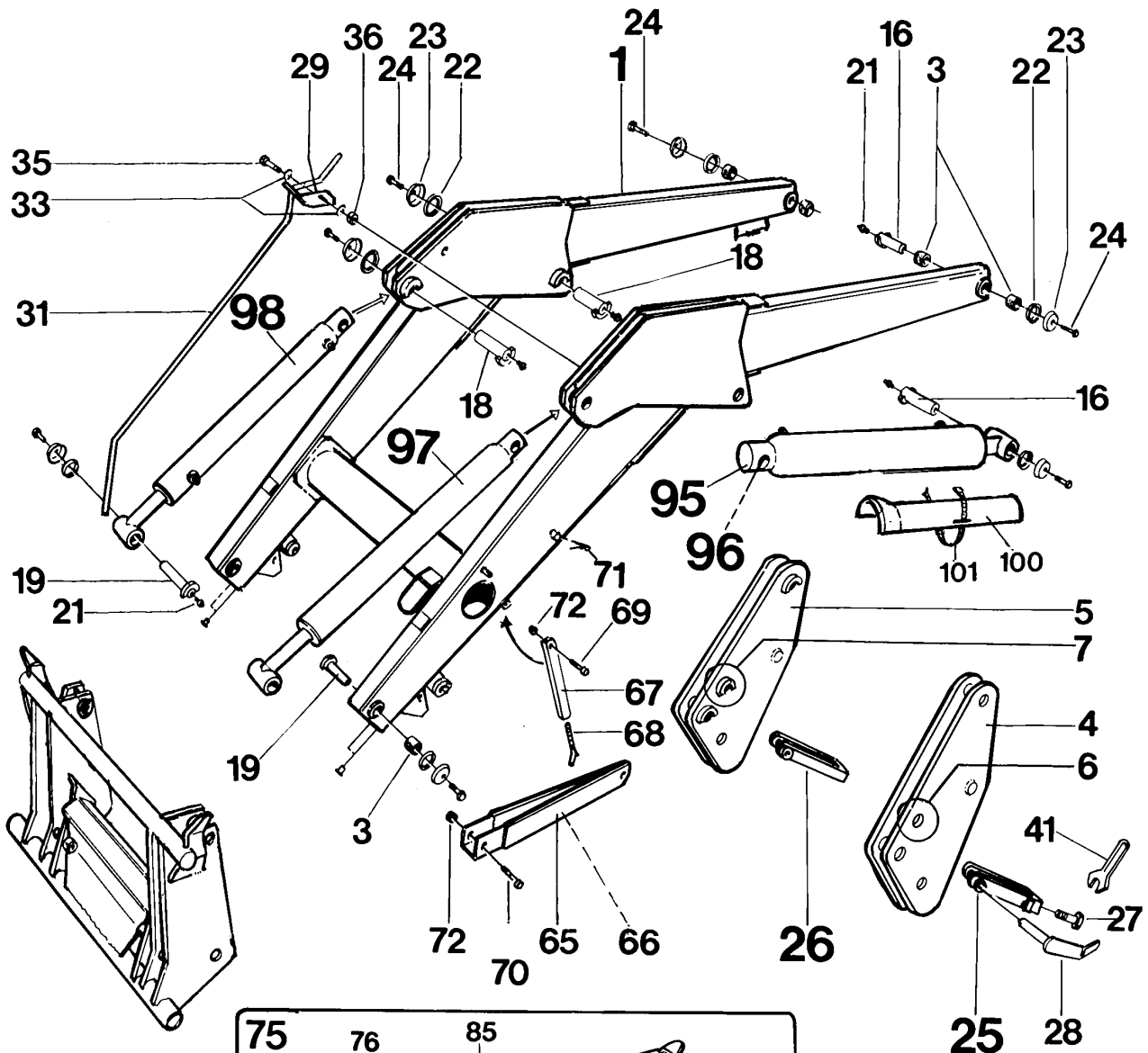
**231220**  
**231240**

Instr. No.

Replacing 96 02 01

Design A. Sj.

R 244 310 C 1-3



#### Hydraulic / Rams

Page 2 44 310 (5)

24

45 Nm  
Loctite 242



# SPARE PARTS

Page No	2	44	310	F	4
Date	97 06 01				

## LOADER Lastare - Chargeur Frontlader Q 310 Type A,B System US

Set - Part No.

**231220**  
**231240**

Instr. No.	
Replacing	96 02 01
Design	A. Sj.

Item Pos. Repère Teil	Part No. Best nr. Référence Bestell.Nr.	ENGLISH	SVENSKA	FRANÇAIS	DEUTSCH	Quantity Antal Nombre Anzahl
41	5047001	Wrench	Nyckel	Clef	Schlüssel	1
65	261130	P. Support Leg.	Stödben, vänster	Béquille de repos	Stützbein (L) (LH)	1
66	261131	P. Support Leg.	Stödben, höger	Béquille de repos	Stützbein (R) (RH)	1
67	261138	Stay	Stag	Appui / Stay	Strebe	2
68	261141	Adjusting Screw	Ställskruv	Vis d'ajustement	Stellschraube	2
69	5002105	Screw	Skruv	Vis	Schraube M6S 12 x 45	2
70	5002109	Screw	Skruv	Vis	Schraube M6S 12 x 65	2
71	5016051	Spring Clip	Låsfjäder	Goupille d'épingle	Federsplint	2
72	5011555	Nut	Mutter	Écrou	Mutter M12 Loc-King	4
75	<b>232296</b>	<b>Tool Carrier</b>	<b>Redskapsfäste</b>	<b>Porte-Outils</b>	<b>Schnellwechselrahmen ("8")</b>	<b>1</b>
76	232297	Support	Fäste	Support	Halter	(1)
77	245134	Locking Handle	Låsspak	Levier de blocage	Verriegelungshebel	(1)
78	232633	Stay	Stag	Appui / Stay	Strebe	(1)
79	1101032	Spring	Fjäder	Ressort	Feder	(1)
80	232625	Latch Bolt	Låstapp	Boulon de verrouillage	Sperrbolzen	(2)
81	5002080	Screw	Skruv	Vis	Schraube M6S 10 x 60	(4)
82	5011554	Nut	Mutter	Écrou	Mutter M 10 Loc-King	(4)
83	5023005	Greaser	Smörjnippel	Graisser	Schmiernippel M 10 x 1	(2)
84	5020624	Gas Spring	Gasfjäder	Ressort de gaz	Gasfeder 200 N	(1)
85	5022144	Handle	Handtag	Poignée	Handgriff	(1)
86	1101024	Spring	Fjäder	Ressort	Feder	(1)
87	142618	Nipple	Nippel	Nipple	Einsteckteil	(1)
88	5002102	Screw	Skruv	Vis	Schraube M6S 12 x 30	(1)
89	1123300	Transfer	Dekal	Autocollant	Abziehbild "WARNING"	(1)
95	<b>751010 2*</b>	<b>Lift Ram, L</b>	<b>Lyftcylinder, V</b>	<b>Vérin de levage,G</b>	<b>Hubzylinder, L 70/40</b>	<b>1</b>
96	<b>753010 3*</b>	<b>Lift Ram, R</b>	<b>Lyftcylinder, H</b>	<b>Vérin de levage,D</b>	<b>Hubzylinder, R 70/40</b>	<b>1</b>
97	<b>771010 4*</b>	<b>Implement Ram, L</b>	<b>Redskapscyl., V</b>	<b>Vérin de cabrage,G</b>	<b>Gerätezylinder, L 65/40</b>	<b>1</b>
98	<b>754010 5*</b>	<b>Implement Ram, R</b>	<b>Redskapscyl., H</b>	<b>Vérin de cabrage,D</b>	<b>Gerätezylinder, R 65/40</b>	<b>1</b>
100	251224	Ram Stop	Cylinderstopp	Blocage de vérin	Zylinder - Sperre	1
101	5022145	Strap	Spännband	Tirant	Spannband	1

Ingående detaljer / Parts Included / Einzelteile / Eléments inclus

2\*) Blad / Leaf / Blatt / Feuille 5 01 164

3\*) Blad / Leaf / Blatt / Feuille 5 01 165

4\*) Blad / Leaf / Blatt / Feuille 5 01 181

5\*) Blad / Leaf / Blatt / Feuille 5 01 166



## SPARE PARTS

Page No	2	44	310	F	5
Date	97 06 01				

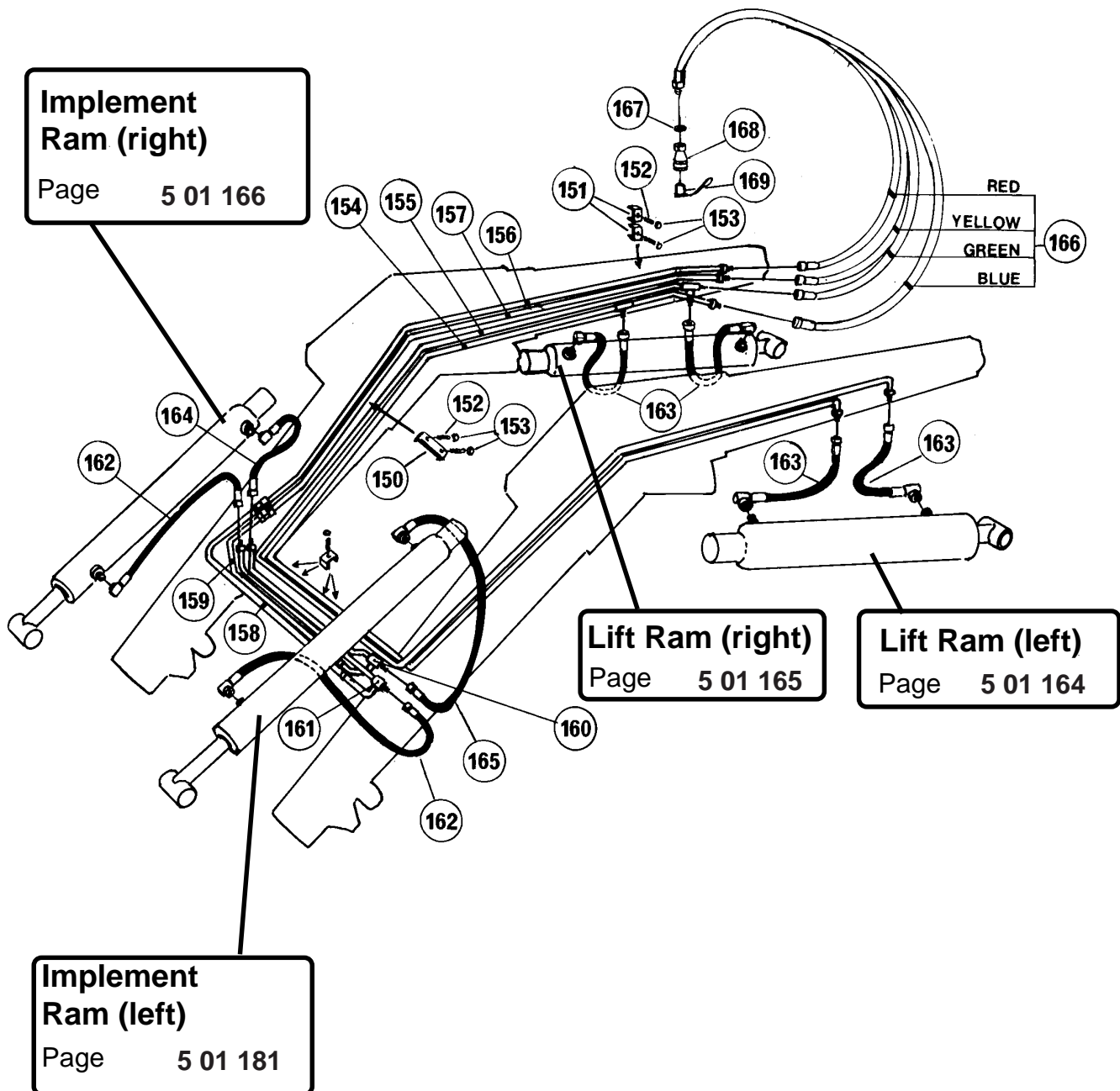
Instr. No.	
Replacing	96 02 01
Design	A. Sj.

**LOADER**  
**Lastare - Chargeur**  
**Frontlader**  
**Q 310 Type A,B**      System **US**

Set - Part No.

**231220**  
**231240**

R 244 310 B 5





# SPARE PARTS

## LOADER Lastare - Chargeur Frontlader Q 310 Type A,B System US

Page No	2	44	310	F	6
Date	97 06 01				

Set - Part No.

**231220**  
**231240**

Item Pos. Repére Teil  
Part No. Best nr. Référence Bestell.Nr.

ENGLISH

SVENSKA

FRANÇAIS

DEUTSCH

Quantity  
Antal  
Nombre  
Anzahl

150	142614	Pipe Anchor	Rörklammer	Bride de fixation	Rohrschelle		1
151	144115	Pipe Anchor	Rörklammer	Bride de fixation	Rohrschelle		9
152	5005445	Screw	Skruv	Vis	Schraube	F6SS 8 x 40	11
153	5011053	Nut	Mutter	Écrou	Mutter	M6M 8	11
154	231343	Oil Pipe, Blue	Oljerör, Blå	Tuyau d'huile,Bleu	Ölrohr, Blau		1
155	231342	Oil Pipe, Green	Oljerör, Grön	Tuyau d'huile,Vert	Ölrohr, Grün		1
156	231340	Oil Pipe, Red	Oljerör, Röd	Tuyau d'huile,Rouge	Ölrohr, Rot		1
157	231341	Oil Pipe, Yellow	Oljerör, Gul	Tuyau d'huile,Jaune	Ölrohr, Gelb		1
158	245151	Oil Pipe, Red	Oljerör, Röd	Tuyau d'huile,Rouge	Ölrohr, Rot		1
159	245146	Oil Pipe, Yellow	Oljerör, Gul	Tuyau d'huile,Jaune	Ölrohr, Gelb		1
160	245148	Oil Pipe	Oljerör	Tuyau d'huile	Ölrohr		1
161	245149	Oil Pipe	Oljerör	Tuyau d'huile	Ölrohr		1
162	1103113	Hose	Slang	Flexible	Schlauch	R 3/8" - 90°- 450	2
163	1103101	Hose	Slang	Flexible	Schlauch	R 3/8" - 90°- 300	4
164	1103116	Hose	Slang	Flexible	Schlauch	R 3/8" - 90°- 550	1
165	1103257	Hose	Slang	Flexible	Schlauch	R 3/8 - 90°- 650	1
166	1103272	Hose	Slang	Flexible	Schlauch	R 1/2" x 1000	4
167	5013604	Copper Washer	Kopparbricka	Rondelle en cuivre	Kupferscheibe	Cu 21 x 28	4
168	5044127	Quick Coupling	Snabbkoppling	Raccord rapide	Schnellkupplung	R 1/2 F	4
169	5044130	Dust Cap	Dammskydd	Pare-poussière	Staubkappe		4



# SPARE PARTS

Page No	5	01	164	B	1
Date	92 02 15				

## RAM

Cylinder - Vérin  
Hubzylinder  
Ø 70/40 mm

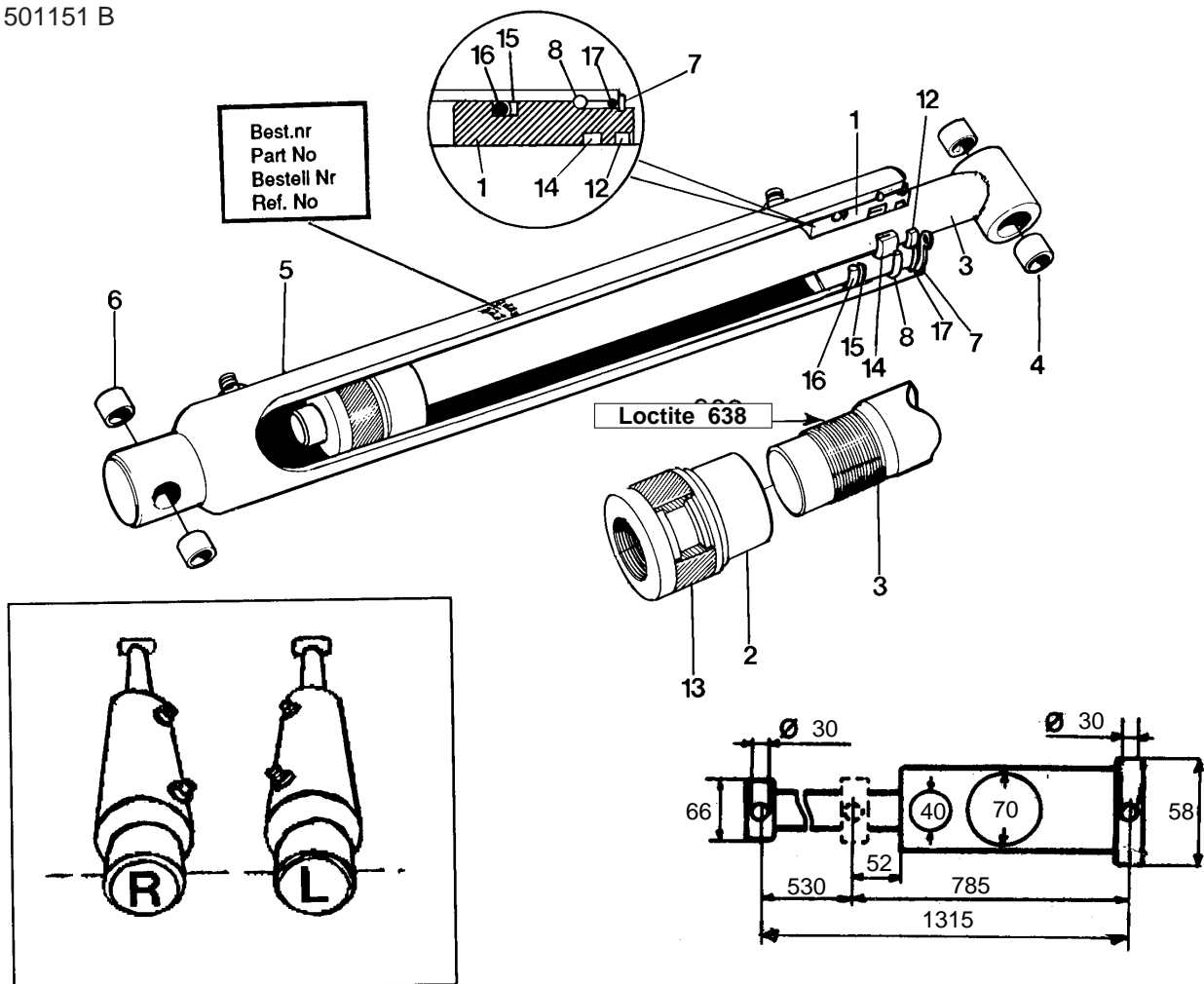
Set - Part No.

**751010 ( L )**  
**752010 ( R )**

Instr. No.	
Replacing	
Design	A.Sj.

Item Pos. Repère Teil	Part No. Best nr. Référence Bestell.Nr.	ENGLISH	SVENSKA	FRANÇAIS	DEUTSCH	Quantity Antal Nombre Anzahl
1	730011	Bearing	Toppmutter	Tête de vérin	Hutmutter	1
2	680012	Piston	Kolv	Piston	Kolben	1
3	<b>737023</b>	PISTON ROD	KOLVSTÅNG	TIGE DE PISTON	KOLBENSTANGE	(7 37 013) 1
4	5018515	Bushing	Bussning	Coussinet	Buchse	Ø 30/34 x 20 (2)
5	<b>751024</b>	BARREL	CYLINDERRÖR	CORPS DE VÉRIN	ZYLINDERROHR	( LEFT ) 1
	<b>752024</b>	BARREL	CYLINDERRÖR	CORPS DE VÉRIN	ZYLINDERROHR	( RIGHT ) 1
6	5018515	Bushing	Bussning	Coussinet	Buchse	Ø 30/34 x 20 (2)
7	5016621	Retaining Ring	Spärring /	Bague de blocage	Sicherheitsring	65 x 2,5 1
8	5016669	Retaining Ring	Säkerhetsring	Bague de blocage	Sicherheitsring	75 x 4 1
	<b>5036156</b>	SEAL ASS'Y	PACKNINGSSATS	POCHETTE DE JOINTS	DICHTUNGSSATZ	1
12	5038101	Scraper	Avstrykare	Bague de râclage	Abstreifer	AS 40/50 x 7/10 (1)
13	5038284	Piston Seal	Kolv tätning	Joint de piston	Kolbendichtung	70/50 x 22 (1)
14	5038254	Seal	Manschett	Bague d'étanchéité	Nutring	40/50 x 10 (1)
15	5038404	Support Ring	Stödring	Bague de support	Stützring	60 - 70 (1)
16	5037405	'O'-ring	O-ring	Joint torique	O-Ring	59,2 x 5,7 (1)
17	5037243	'O'-ring	O-ring	Joint torique	O-Ring	63,09 x 3,53 (1)

R 501151 B







# SPARE PARTS

Page No **5 01 165 A 1**

Date 93 07 01

Instr. No.

Replacing

Design Bo V.

## RAM

Cylinder - Vérin

Zylinder

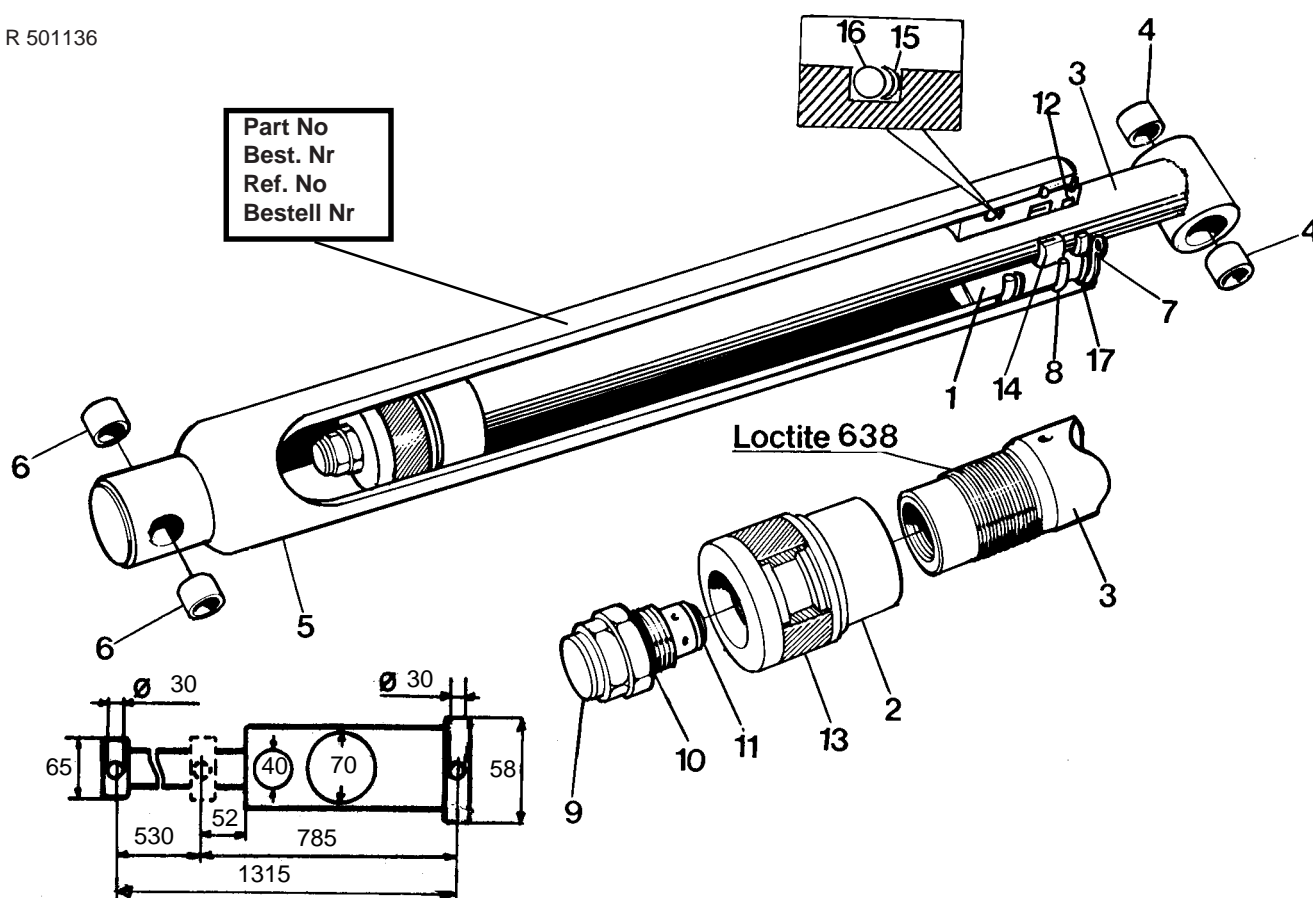
Ø 70/40 mm

Set - Part No.

**753010**

Item Pos. Repère Teil	Part No. Best nr. Référence Bestell.Nr.	ENGLISH	SVENSKA	FRANÇAIS	DEUTSCH	Quantity Antal Nombre Anzahl
1	730011	Bearing	Toppmutter	Tête de vérin	Hutmutter	1
2	707012	Piston	Kolv	Piston	Kolben	1
3	<b>754023</b>	PISTON ROD	KOLVSTÅNG	TIGE DE PISTON	KOLBENSTANGE	(7 54 013) 1
4	5018515	Bushing	Bussning	Coussinet	Buchse	Ø 30/34 x 20 (2)
5	<b>753024</b>	BARREL	CYLINDERÖR	CORPS DE VÉRIN	ZYLINDERROHR	(7 53 014) 1
6	5018515	Bushing	Bussning	Coussinet	Buchse	Ø 30/34 x 20 (2)
7	5016621	Retaining Ring	Spärring	Bague de blocage	Sicherheitsring	65 x 2,5 1
8	5016669	Retaining Ring	Säkerhetsring	Bague de blocage	Sicherheitsring	75 x 4 1
9	<b>519021</b>	UNLOADING- VALVE	CHOCKVENTIL	CLAPET ANTI-CHOC	ENTLADEVENTIL	( 22 Mpa) 1
10	519041	'O'-ring	O-ring	Joint torique	O-Ring	(1)
11	519042	'O'-ring	O-ring	Joint torique	O-Ring	(1)
	<b>5036156</b>	SEAL ASS'Y	PACKNINGSSATS	POCHETTE DE JOINTS	DICHTUNGSSATZ	1
12	5038101	Scraper	Avstrykare	Bague de râclage	Abstreifer	AS 40/50 x 7/10 (1)
13	5038284	Piston Seal	Kolvtätning	Joint de piston	Kolbendichtung	60/50 x 18 (1)
14	5038254	Seal	Manschett	Bague d'étanchéité	Nutring	40/50 x 10 (1)
15	5038404	Support Ring	Stödring	Bague de support	Stützring	60 - 70 (1)
16	5037405	'O'-ring	O-ring	Joint torique	O-Ring	59,2 x 5,7 (1)
17	5037243	'O'-ring	O-ring	Joint torique	O-Ring	63,09 x 3,53 (1)

R 501136





# SPARE PARTS

Page No	5	01	181	A	1
Date	95 03 01				

## RAM Cylinder - Vérin Zylinder Ø 65/40 mm

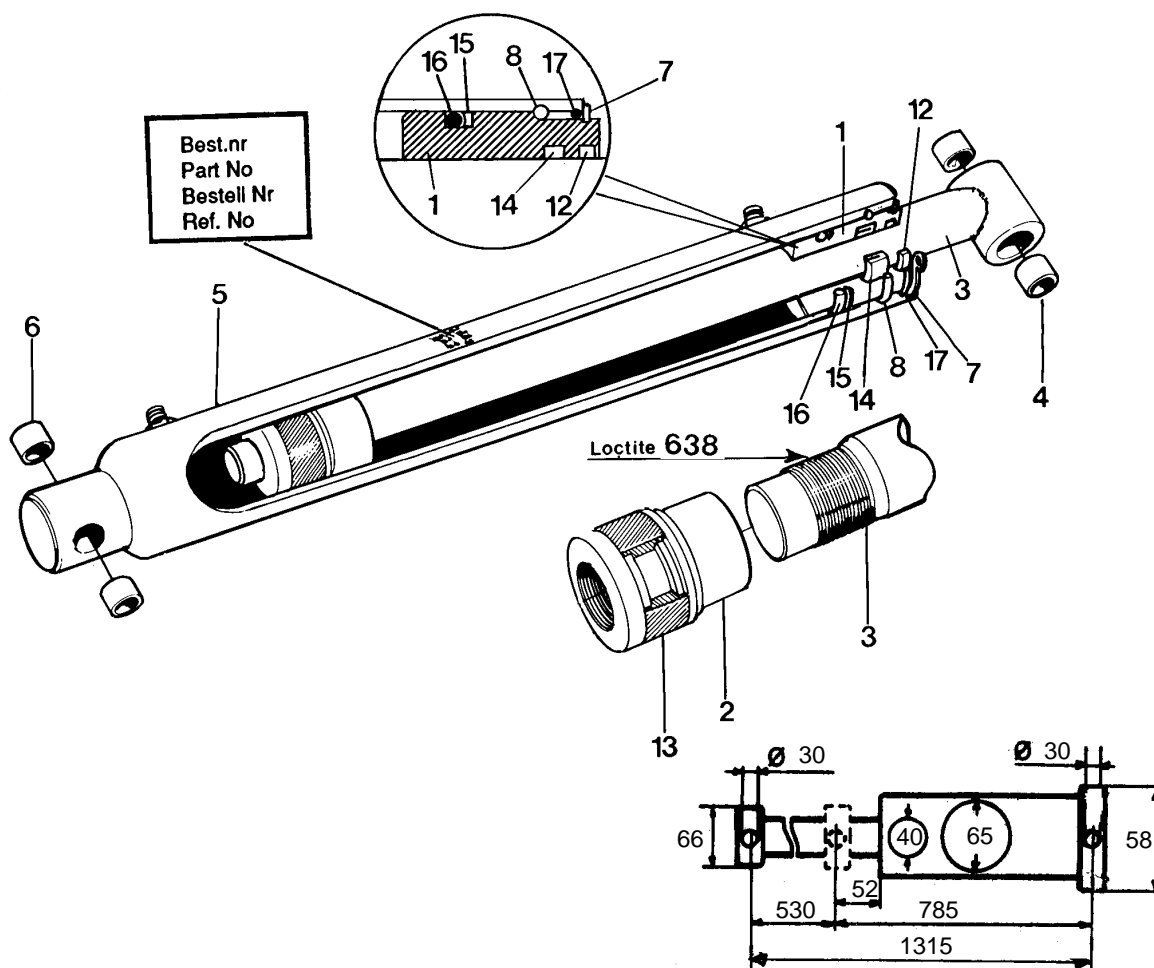
Set - Part No.

**771010**

Instr. No.	
Replacing	
Design	A.Sj.

Item Pos. Repère Teil	Part No. Best nr. Référence Bestell.Nr.	ENGLISH	SVENSKA	FRANÇAIS	DEUTSCH	Quantity Antal Nombre Anzahl
1	727011	Bearing	Toppmutter	Tête de vérin	Hutmutter	1
2	719012	Piston	Kolv	Piston	Kolben	1
3	<b>737023</b>	PISTON ROD	KOLVSTÅNG	TIGE DE PISTON	KOLBENSTANGE	(7 37 013) 1
4	5018515	Bushing	Bussning	Coussinet	Buchse	Ø 30/34 x 20 (2)
5	<b>771024</b>	BARREL	CYLINDERRÖR	CORPS DE VÉRIN	ZYLINDERROHR	1
6	5018515	Bushing	Bussning	Coussinet	Buchse	Ø 30/34 x 20 (2)
7	5016608	Retaining Ring	Spårring /	Bague de blocage	Sicherheitsring	60 x 2,0 1
8	5016668	Retaining Ring	Säkerhetsring	Bague de blocage	Sicherheitsring	70 x 4 1
	<b>5036155</b>	SEAL ASS'Y	PACKNINGSSATS	POCHETTE DE JOINTS	DICHTUNGSSATZ	1
12	5038101	Scraper	Avstrykare	Bague de râclage	Abstreifer	AS 40/50 x 7/10 (1)
13	5038289	Piston Seal	Kolv tätning	Joint de piston	Kolbendichtung	65/50 x 18 (1)
14	5038254	Seal	Manschett	Bague d'étanchéité	Nutring	40/50 x 10 (1)
15	5038418	Support Ring	Stödring	Bague de support	Stützring	55 - 65 (1)
16	5037404	'O'-ring	O-ring	Joint torique	O-Ring	54,2 x 5,7 (1)
17	5037242	'O'-ring	O-ring	Joint torique	O-Ring	58,74 x 3,53 (1)

R 501151 B





# SPARE PARTS

Page No **5 01 166 C 1**

Date **96 06 01**

Instr. No.

Replacing **90 09 01**

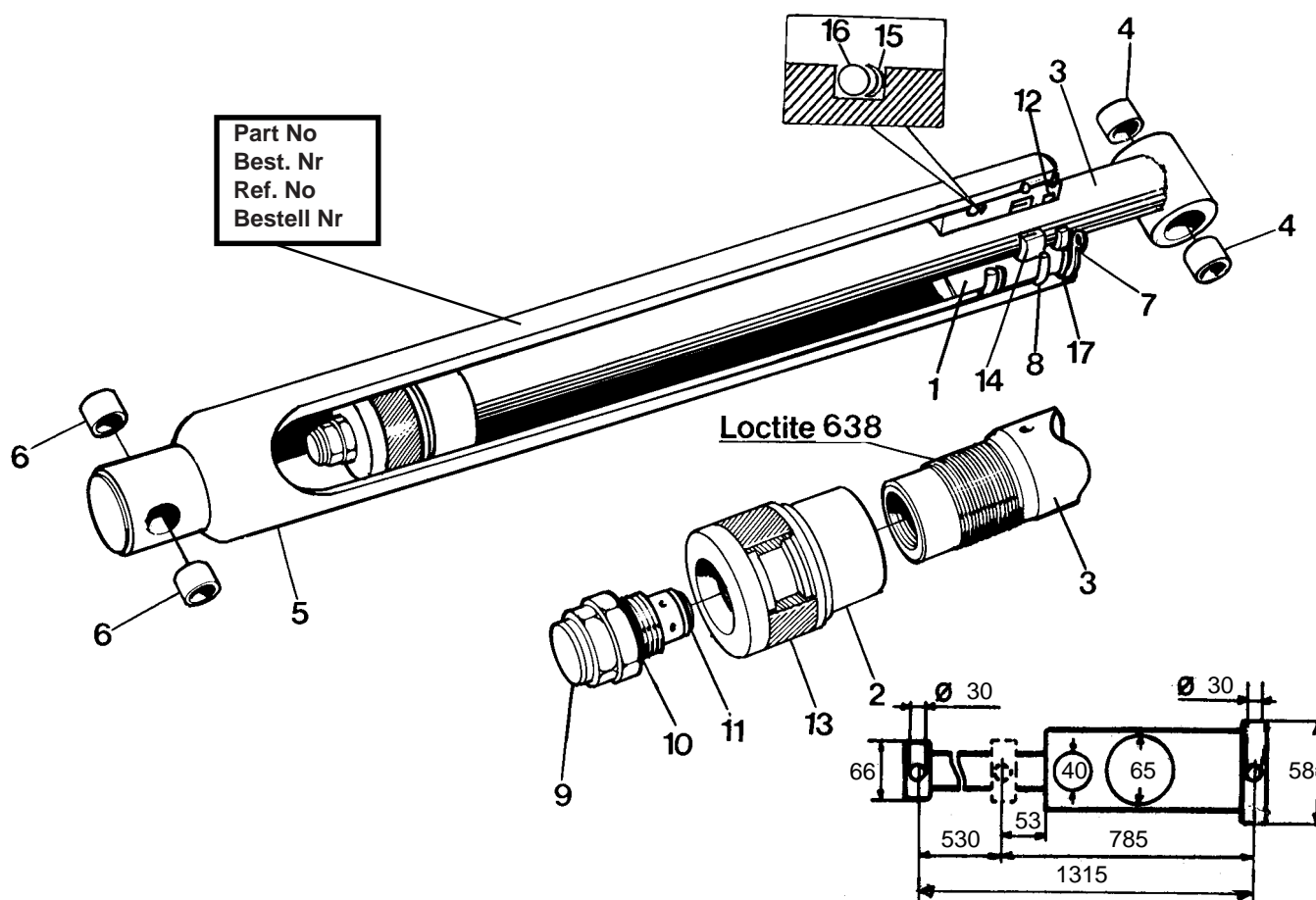
Design **Bo V.**

## RAM Cylinder - Vérin Zylinder Ø 65/40 mm

Set - Part No.

**754010**

Item Pos. Repère Teil	Part No. Best. nr. Référence Bestell.Nr.	ENGLISH	SVENSKA	FRANÇAIS	DEUTSCH	Quantity Antal Nombre Anzahl
1	727011	Bearing	Toppmutter	Tête de vérin	Hutmutter	1
2	719012	Piston	Kolv	Piston	Kolben	1
3	<b>754023</b>	PISTON ROD	KOLVSTÅNG	TIGE DE PISTON	KOLBENSTANGE (7 54 013)	1
4	5018515	Bushing	Bussning	Coussinet	Buchse Ø 30/34 x 20	(2)
5	<b>754024</b>	CYLINDER	CYLINDER	VÉRIN	ZYLINDER (7 54 014)	1
6	5018515	Bushing	Bussning	Coussinet	Buchse Ø 30/34 x 20	(2)
7	5016608	Retaining Ring	Spårring	Bauge de blocage	Sicherheitsring 60 x 20	1
8	5016668	Retaining Ring	Säkerhetsring	Bauge de blocage	Sicherheitsring 69 x 4	1
9	<b>519021</b>	SECURITY VALVE	CHOCKVENTIL	CLAPET d'ANTI-CHOC	SICHERHEITS-VENTIL (22Mpa)	1
10	519041	'O'-ring	O-ring	Joint torique	O-Ring	(1)
11	519042	'O'-ring	O-ring	Joint torique	O-Ring	(1)
	<b>5036155</b>	SEAL ASS'Y	PACKNINGSSATS	POCHETTE DE JOINTS	DICHTUNGSSATZ	1
12	5038101	Scraper	Avstrykare	Bague de râclage	Abstreifer AS 40/50 x 7/10	(1)
13	5038289	Piston Seal	Kolv tätning	Joint de piston	Kolbendichtung 60/50 x 18	(1)
14	5038254	Seal	Manschett	Bague d'étanchéité	Nutring 40/50 x 10	(1)
15	5038418	Support Ring	Stödring	Bague de support	Stützring 55 - 65	(1)
16	5037404	'O'-ring	O-ring	Joint torique	O-Ring 54,2 x 5,7	(1)
17	5037242	'O'-ring	O-ring	Joint torique	O-Ring 58,74 x 3,53	(1)





# SPARE PARTS

Page No **4 16 016 A 1**

Date 97 12 20

Instr. No.

Replacing

Design A.Sj

## BEARING BOX

Lagerlåda / Potence  
Lagergehäuse  
(Q- 310 A)

Set - Part No.

Item Part No.  
Pos. Best nr.  
Repère Référence  
Teil Bestell.Nr.

ENGLISH

SVENSKA

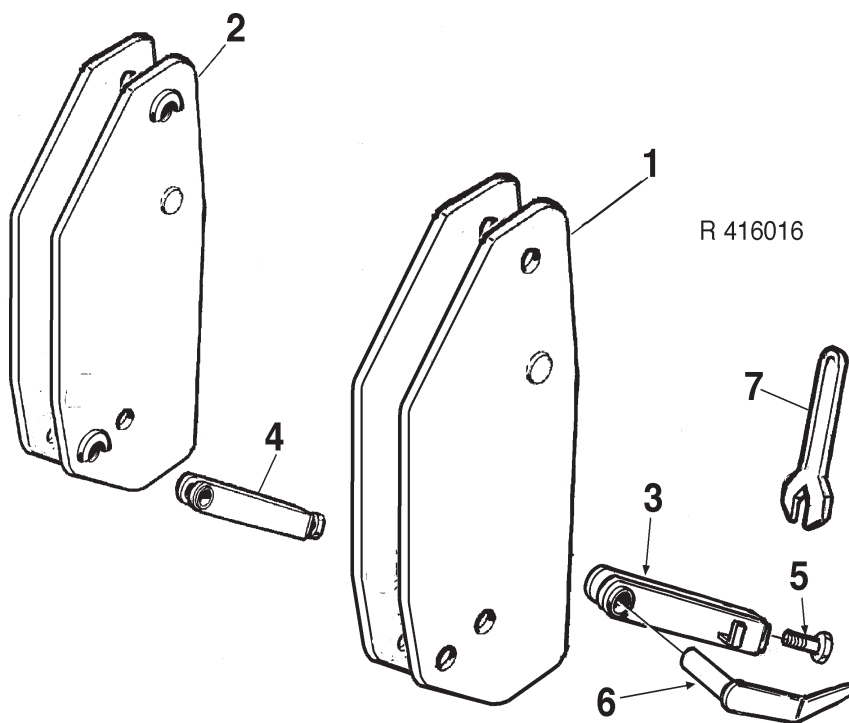
FRANÇAIS

DEUTSCH

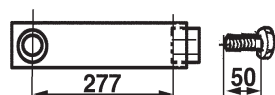
Quantity  
Antal  
Nombre  
Anzahl

### Bearingbox type A (Standard form)

1	231293	Bearing Box , L	Lagerlåda, V	Potence, G	Lagergehäuse, L		1
2	231294	Bearing Box , R	Lagerlåda, H	Potence, D	Lagergehäuse, R		1
<b>Retaining Fork Type A</b>							
3	<b>258141</b>	Retaining Fork, L	Spänngaffel, V	Bride de serrage,G	Spannbügel, L	L= 277 mm	1
4	<b>258142</b>	Retaining Fork, R	Spänngaffel, H	Bride de serrage,D	Spannbügel, R	L= 277 m	1
5	5002253	Screw	Skruv	Vis	Schraube	M6S 24 x 50	(1)
<b>Retaining Fork Type B</b>							
3	<b>252098</b>	Retaining Fork, L	Spänngaffel, V	Bride de serrage,G	Spannbügel, L	L= 360 m	1
4	<b>252099</b>	Retaining Fork, R	Spänngaffel, H	Bride de serrage,D	Spannbügel, R	L= 360 m	1
5	5002252	Screw	Skruv	Vis	Schraube	M6S 24 x 70	(1)
6	1116525	Latch Bolt	Låstapp	Boulon de verrouillage	Sperrbolzen		2
7	5047001	Wrench	Nyckel	Clef	Schlüssel		1



Type A



Type B





# SPARE PARTS

Page No. **4 16 015 A 1**

Date **97 12 20**

Instr. No.

Replacing

Design **A.Sj**

## BEARING BOX

Lagerlåda / Potence

Lagergehäuse

(Q- 310 B, -340)

Set - Part No.

Item Pos. Repère Teil  
Part No. Best nr. Référence Bestell.Nr.

ENGLISH

SVENSKA

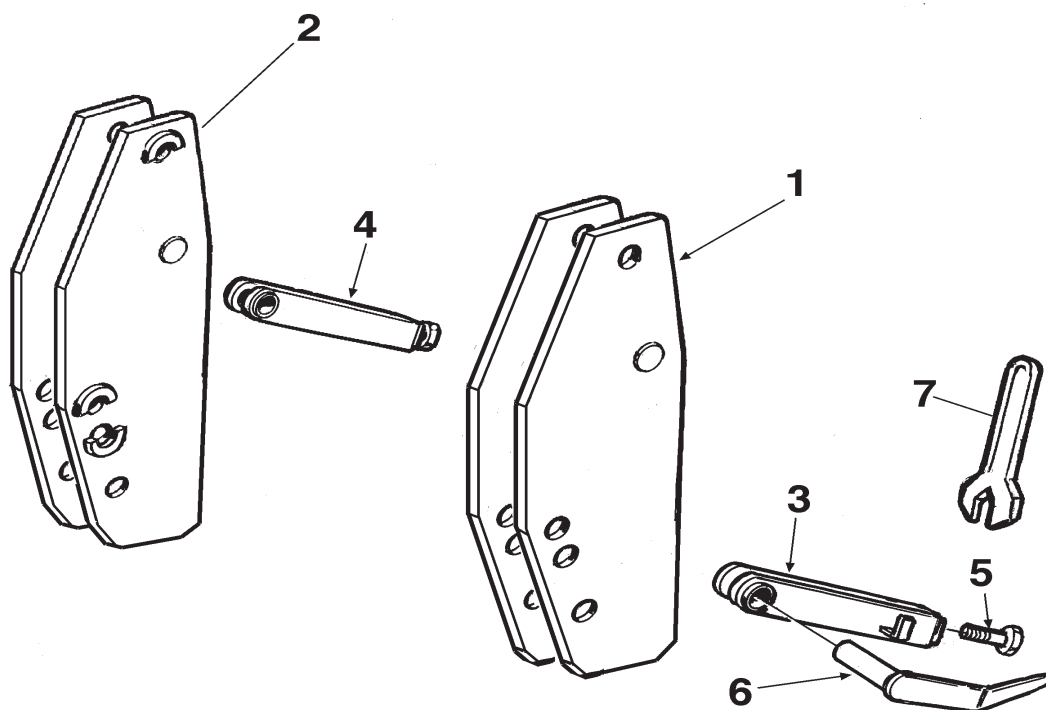
FRANÇAIS

DEUTSCH

Quantity  
Antal  
Nombre  
Anzahl

### Bearingbox type A (Standard form)

1	232293	Bearing Box , L	Lagerlåda, V	Potence, G	Lagergehäuse, L		1
2	232294	Bearing Box , R	Lagerlåda, H	Potence, D	Lagergehäuse, R		1
<b>Retaining Fork Type A</b>							
3	<b>258141</b>	Retaining Fork, L	Spänngaffel, V	Bride de serrage,G	Spannbügel, L	L= 277 mm	1
4	<b>258142</b>	Retaining Fork, R	Spänngaffel, H	Bride de serrage,D	Spannbügel, R	L= 277 m	1
5	5002253	Screw	Skruv	Vis	Schraube	M6S 24 x 50	(1)
<b>Retaining Fork Type B</b>							
3	<b>252098</b>	Retaining Fork, L	Spänngaffel, V	Bride de serrage,G	Spannbügel, L	L= 360 m	1
4	<b>252099</b>	Retaining Fork, R	Spänngaffel, H	Bride de serrage,D	Spannbügel, R	L= 360 m	1
5	5002252	Screw	Skruv	Vis	Schraube	M6S 24 x 70	(1)
6	1116525	Latch Bolt	Låstapp	Boulon de verrouillage	Sperrbolzen		2
7	5047001	Wrench	Nyckel	Clef	Schlüssel		1



**Type A**



**Type B**



R 416014



# SPARE PARTS

Page No	4	03	056	D	1
Date	96 04 01.				

Instr. No.	
Replacing	95 01 01.
Design	A.Sj

## Tool Carrier Redskapsfäste - Porte-Outils Schnellwechselrahmen EURO-COMBI (3-5-8) Q-310 -320 - 340 - 350 - 360 (US) MF-831

Set - Part No.

### 232100

Item Pos. Repère Teil	Part No. Best nr. Référence Bestell.Nr.	ENGLISH	SVENSKA	FRANÇAIS	DEUTSCH	Quantity Antal Nombre Anzahl
1	232301	Frame	Fäste	Cadre	Rahmen	1
3	233120	Control Rod	Låsstag	Barre de commande	Bedienungsstange	2
4	233123	Stay	Stag	Bride	Strebe	4
5	233127	Locking pin	Låstapp	Axe	Sperrbolzen	Dia. 20 mm 2
6	142627	Locking pin	Låstapp	Axe	Sperrbolzen	Dia. 28 mm 2
7	1101017	Spring	Fjäder	Ressort	Feder	2
8	5002080	Screw	Skruv	Vis	Schraube	M6S 10 x 60 8
9	5002083	Screw	Skruv	Vis	Schraube	M6S 10 x 75 3
10	233129	Screw	Skruv	Vis	Schraube	2
11	5011554	Nut	Mutter	Écrou	Mutter	M6M 10 (Loc-king) 13
12	5023005	Greaser	Smörjnippel	Graisseur	Schmiernippel	M 10 x 1 4
13	5020621	Gaz Spring	Gasfjäder	Ressort de gaz	Gasfeder	1
14	1123300	Transfer	Dekal	Autocollant	Abziehbild	1
15	1123502	Transfer	Dekal	Autocollant	Abziehbild	2
16	<b>233167</b>	Control Lever	Manöverspak	Levier de commande	Bedienungshebel	1
17	5016152	Split pin	Saxpinne	Goupille fendue	Splint	(1)
18	1101031	Tension spring	Dragfjäder	Ressort de traction	Zugfeder	(1)
19	233173	Link	Spakdel	Liaison mobile	Gelenk	2
20	233168	Link	Spakdel	Liaison mobile	Gelenk	1
21	233169	Parallel Rod	P-stag	Barre Parallèle	Parallelstange	1
22	5022148	Handle cover	Spaköverdrag	Protège-poignée	Hebelschutz	1
23	1101033	Spring	Fjäder	Ressort	Feder	1
30	233311 1)	Control Lever	Manöverspak	Levier	Bedienungshebel	1
31	233126 1)	Link	Spakdel	Liaison mobile	Gelenk	3
32	233128 1)	Parallel Rod	P-stag	Barre Parallèle	Parallelstange	2
33	5022144 1)	Handle cover	Spaköverdrag	Protège-poignée	Hebelschutz	1

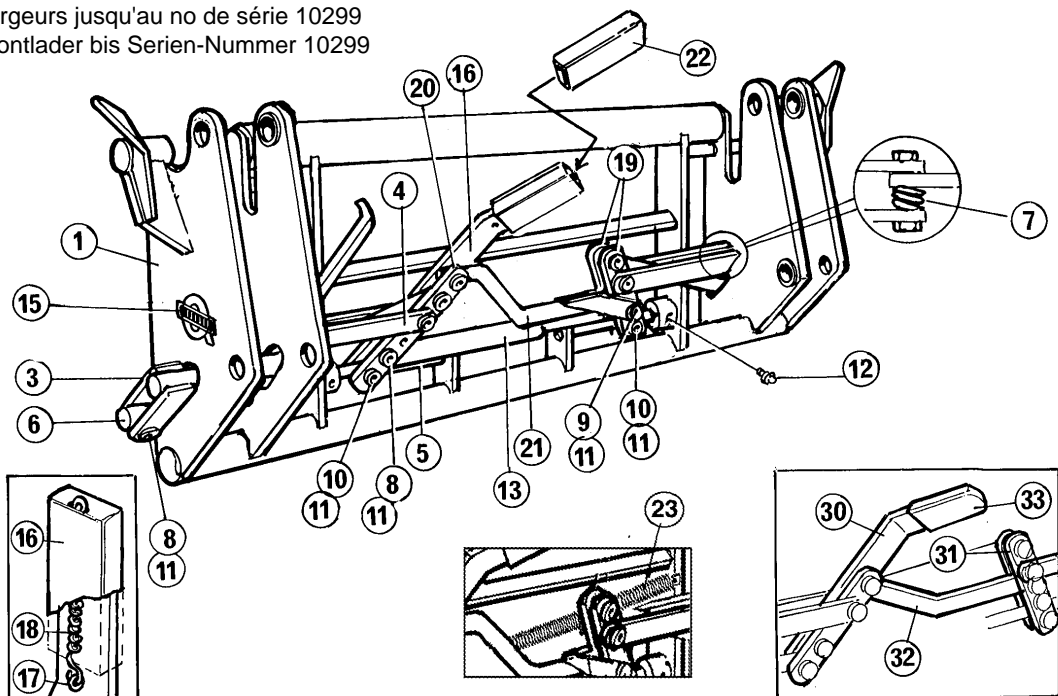
1) Concerns loaders up to and incl. series no 10299

1) Gäller lastare t o m serie-nummer 10299

1) S'applique aux chargeurs jusqu'au no de série 10299

1) Bezieht sich auf Frontlader bis Serien-Nummer 10299

R 403056







# SPARE PARTS

Page No **4 10 008 E 1**

Date 97 05 01

Instr. No.

Replacing 96 08 10

Design A.Sj.

## Hydr. Implement Locking Hydr. Redskapslåsning Verrouillage hydraulique Hydr. Geräteverriegelung

Q- 415- 435- 445- 450- 790, - 600 - serial  
MF- 831 -841-844 -845 -861-862 -863 -864 -865 -866

Set - Part No.

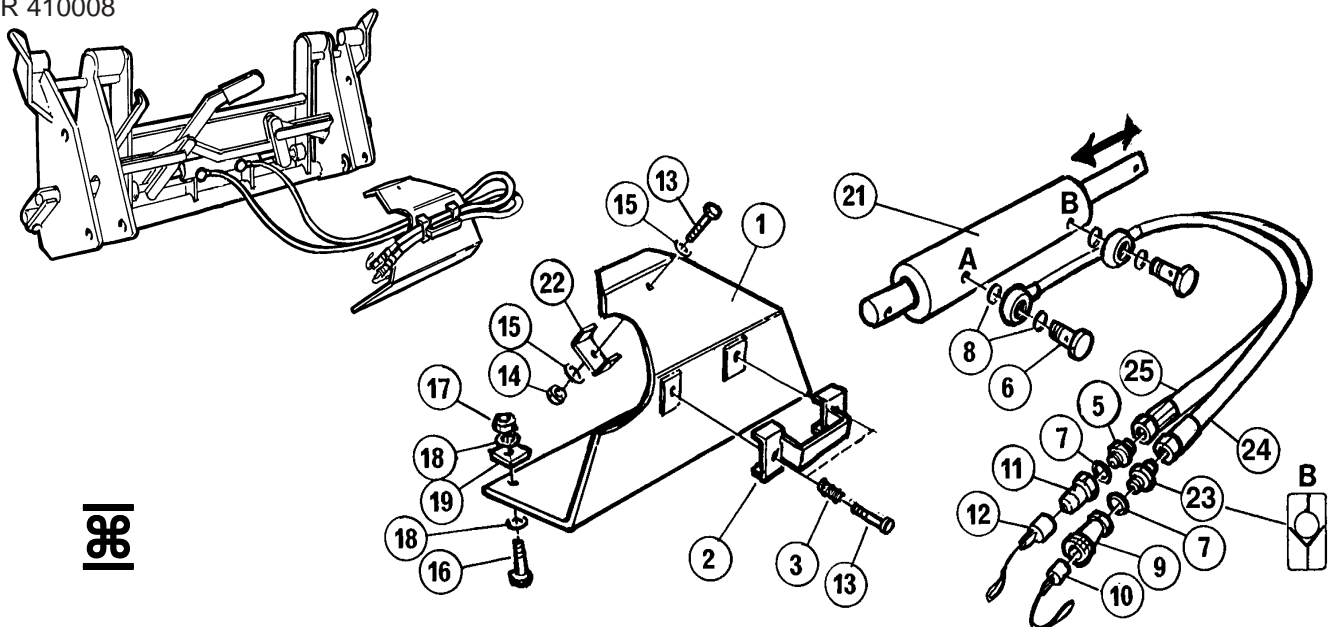
**245099**  
**261099**

Item Pos. Repère Teil	Part No. Best nr. Référence Bestell.Nr.	ENGLISH	SVENSKA	FRANÇAIS	DEUTSCH	Quantity Antal Nombre Anzahl
1	245104	Cover Plate	Skyddsplåt	Plaque de protect.	Schutzblech	1
2	145114	Hose Clamp	Slanghållare	Étrier	Schlauchschelle	1
3	1101019	Spring	Fjäder	Ressort	Feder	2
5	1120110	Adaptor	Adapter	Raccord union	Rohrverbindung	R 1/2" - R 1/4" 1
6	1120166	Hollow Screw	Banjaskruv	Boulon creux	Hohlschraube	R 1/4" 2
7	5013604	Washer	Bricka	Rondelle	Scheibe	ø 21/28 x 2 Cu 2
8	5013613	Washer	Bricka	Rondelle	Scheibe	ø 13,3/18,9 x 1,5 Cu 4
9	5044127	Quick Coupling	Snabbkoppling	Raccord rapide	Schnellkupplung	R 1/2" (F) 1
10	5044130	Dust Cover	Dammskydd	Capuchon	Staubkappe	1
11	5044128	Quick Coupling	Snabbkoppling	Raccord rapide	Schnellkupplung	R 1/2" (M) 1
12	5044129	Dust Cover	Dammskydd	Capuchon	Staubkappe	1
13	5002056	Screw	Skruv	Vis	Schraube	M6S 8 x 50 3
14	5011053	Nut	Mutter	Écrou	Mutter	M6M 8 1
15	5013101	Washer	Bricka	Rondelle	Scheibe	BRB 8,4 x 16 2
16	5002076	Screw	Skruv	Vis	Schraube	M6S 10 x 20 2
17	5011054	Nut	Mutter	Écrou	Mutter	M6M 10 2
18	5013110	Washer	Bricka	Rondelle	Scheibe	BRB 10,5 x 22 4
19	251200 <sup>1)</sup>	Lug	Öra	Support	Halter	2
20	1123390	Transfer	Dekal	Autocollant	Abziehbild	1
21	702010	Locking Ram	Låscylinder	Vérin de blocage	Sperrzylinder	1
22	144115	Clamp	Klammer	Bride de fixation	Halter	1
23	<b>511230</b>	Checkvalve	Backventil	Clapet de retenue	Rückschlagklappe	1
24	1103427 <sup>2)</sup>	Hydraulic Hose	Hydraulslang	Flexible hydrauliqu e	Hydraulikschlauch	1/4" x 650 x Sp (1)
	1103145 <sup>3)</sup>	Hydraulic Hose	Hydraulslang	Flexible hydrauliqu e	Hydraulikschlauch	1/4" x 800 x Sp (1)
25	1103145 <sup>2)</sup>	Hydraulic Hose	Hydraulslang	Flexible hydrauliqu e	Hydraulikschlauch	1/4" x 800 x Sp (1)
	1103146 <sup>3)</sup>	Hydraulic Hose	Hydraulslang	Flexible hydrauliqu e	Hydraulikschlauch	1/4" x 900 x Sp (1)

### Note:

- 1) To be welded on the tool carrier / Svetsas på redskapsfästet / À souder au porte-outils / An Schnellwechselrahmen schweißen
- 2) Included in Set No 2 61 099 (US Loader) / Ingår i sats 2 61 099 (US Lastare) / Inclus dans le jeu 2 61 099 (US Chargeur) / In Satz 2 61 099 (US Lader).
- 3) Included in Set No 2 45 099 (UM, UL- Loader) / Ingår i sats 2 45 099 (UM,UL- Lastare) / Inclus dans le jeu 2 45 099 (UM, UL- Chargeur) / In Satz 2 45 099 (UM,UL- Lader).

R 410008





## SPARE PARTS

Page No. **6 19 401 F 1**

Date 98 05 01

Instr. No.

Replacing 96 01 011

Design Bo V.

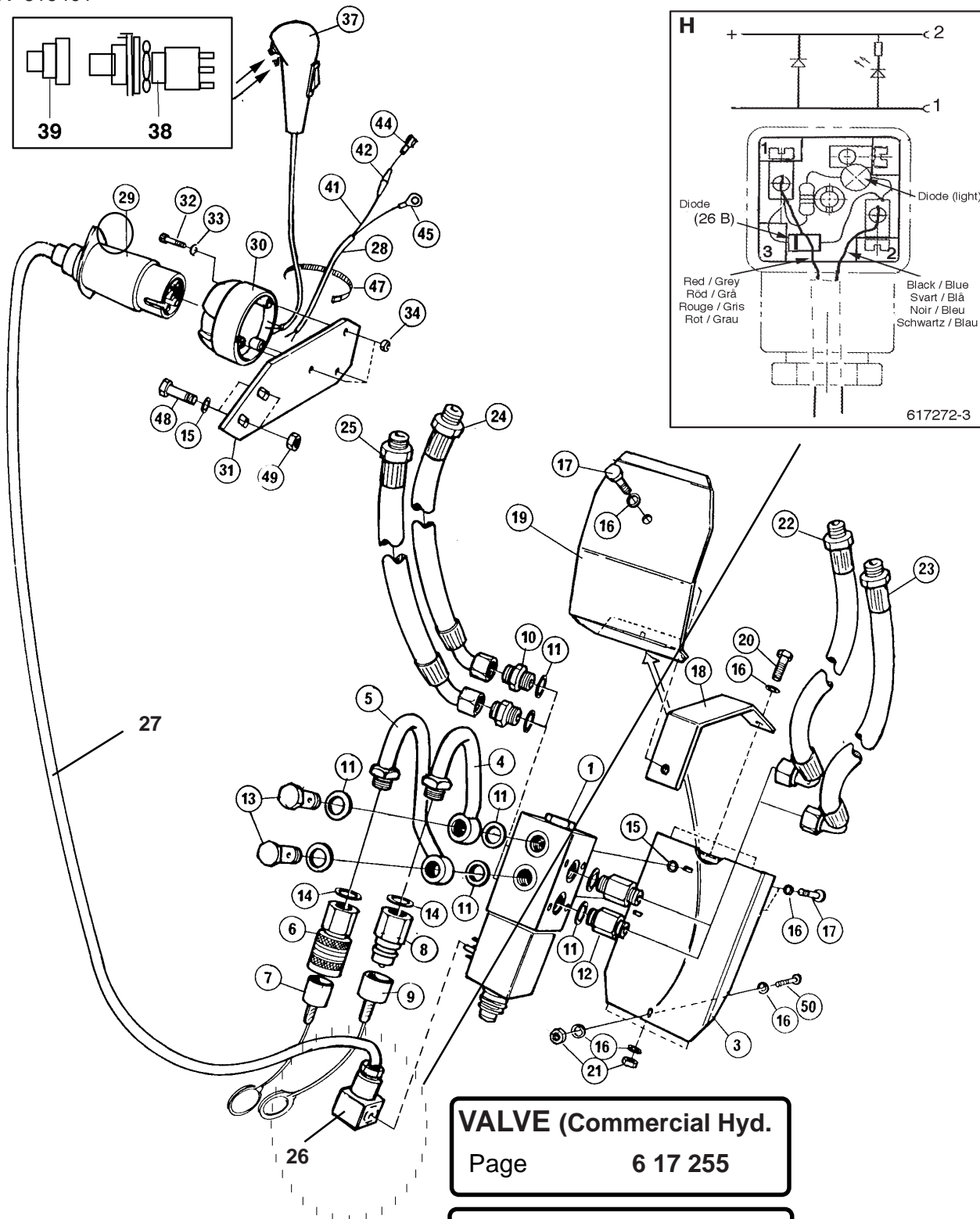
## SELECTO - QUICK 3-rd

Q-310, 340, 415, 450 / 600 - 700 Series

Set - Part No.

**313413**

R 619401



**VALVE (Commercial Hyd.**

Page 6 17 255

**VALVE (Intertraco)**

Page 6 17 251





# SPARE PARTS

## SELECTO - QUICK 3-rd

**Q-310, 340, 415, 450 / 600 - 700 Series**

Page No	6	19	401	F	2
Date	98 05 01				

Set - Part No.

**313413**

Item Pos. Repère Teil	Part No. Best nr. Référence Bestell.Nr.	ENGLISH	SVENSKA	FRANÇAIS	DEUTSCH	Quantity Antal Nombre Anzahl
1	<b>516071</b> <sup>1)</sup>	<b>Valve</b>	<b>Ventil</b>	<b>Distributeur</b>	<b>Steuergerät</b>	<b>(Intertraco)</b> <b>1</b>
	<b>516091</b> <sup>2)</sup>	<b>Valve</b>	<b>Ventil</b>	<b>Distributeur</b>	<b>Steuergerät</b>	<b>(Commercial Hyd.)</b> <b>1</b>
3	313468	Valve Plate	Ventilplatta	Plaque de distrib.	Ventilplatte	1
4	313486	Tube	Rör	Tube	Rohr	1
5	313485	Tube	Rör	Tube	Rohr	1
6	5044127	Quick Coupling	Snabbkoppling	Raccord rapide	Schnellkupplung	R 1/2" (F) 1
7	5044130	Dust Cover	Dammskydd	Capuchon	Staubkappe	1
8	5044128	Quick Coupling	Snabbkoppling	Raccord rapide	Schnellkupplung	R 1/2" (M) 1
9	5044129	Dust Cover	Dammskydd	Capuchon	Staubkappe	1
10	1120012	Adaptor	Adapter	Raccord union	Rohrverbindung	R 1/2" 2
11	5013853	Washer	Bricka	Rondelle	Scheibe	Tredo 8
12	1120118	Adaptor	Adapter	Raccord union	Rohrverbindung	R 1/2" 2
13	1120241	Hollow Screw	Banjoskruv	Vis creuse	Hohlschraube	2
14	5013604	Washer	Bricka	Rondelle	Scheibe	Cu 2
15	5013110 *	Washer	Bricka	Rondelle	Scheibe	BRB 10,5 x 22 2
16	5013101	Washer	Bricka	Rondelle	Scheibe	BRB 8,4 x 16 11
17	5002058	Screw	Skruv	Vis	Schraube	M6S 8 x 16 3
18	313483	Support	Fäste	Support	Halter	1
19	313484	Protecting Plate	Skyddsplåt	Plaque de protect.	Schutzblech	1
20	5002055	Screw	Skruv	Vis	Schraube	M6S 8 x 40 3
21	5011053	Nut	Mutter	Écrou	Mutter	M6M 8 4
22	1103234	Hose	Slang	Flexible	Schlauch	3/8" x 195 x 1/2" /90° 1
23	1103235	Hose	Slang	Flexible	Schlauch	3/8" x 245 x 1/2" /90° 1
24	1103236	Hose	Slang	Flexible	Schlauch	3/8" x 310 x 1/2" /90° 1
25	1103237	Hose	Slang	Flexible	Schlauch	3/8" x 395 x 1/2" /90° 1
26	5024369	Connector	Kontaktidon	Connecteur	Steckanschluß	1
26 B	5024409	Diode	Diod	Diode	Diode	1 Amp. / 100 V (1)
27	5024205	Cable	Kabel	Câble	Kabel	3 x 0,75 x 3700 1
28	5024202 *	Cable	Kabel	Câble	Kabel	2 x 1,5 x 2500 1
29	5024352	Connector, male	Kontakt	Connecteur, mâle	Steckanschluß, M (M)	1
30	5024351 *	Connector, female	Kontakt	Connecteur, fem.	Steckanschluß, F (F)	1
31	313467 *	Connector Support	Kontakthållare	Support de prise électrique	Steckanschluß-Halter	1
32	5004003 *	Screw	Skruv	Vis	Schraube	MC6S 5 x 35 3
33	5013112 *	Washer	Bricka	Rondelle	Scheibe	BRB 5,3 x 10 6
34	5011051 *	Nut	Mutter	Écrou	Mutter	M6M 5 3
37	<b>5024414</b> *	Electr.Control Device	Reglageknopp	Poignée de comm. avec interrupteur	Elektr.Bedienungs-Vorrichtung	1
38	5024365	Switch	Strömbrytare	Interrupteur	Schalter	A 294813 (2)
39	5024366	Boot	Damask	Capuchon	Schutzkappe	A 294814 (2)
41	5024201 *	Cable	Kabel	Câble	Kabel	1x 1,5 x 1000 1
42	5024356 *	Fuse Box	Säkringsdosa	Boîte à fusibles	Sicherungshalter	(8 Amp.) 1
44	5024111 *	Splice	Förgreningskontakt	Connecteur de branchement	Kabelverbinder	1
45	5024112 *	Terminal	Ring	Raccordement de câbles	Kabelschuh	1
47	5033621 *	Strip	Buntband	Collier	Bundband	10
48	5002077 *	Screw	Skruv	Vis	Schraube	M6S 10 x 30 2
49	5011054 *	Nut	Mutter	Écrou	Mutter	M6M 10 2
50	5002051	Screw	Skruv	Vis	Schraube	M6S 8 x 20 1

### Note

Parts included / Ingående detaljer / Eléments inclus / Einzelteile

1) Leaf / Blad / Feuille / Blatt 6 17 251

2) Leaf / Blad / Feuille / Blatt 6 17 255

\*) Ingår i sats 3 13 409



# SPARE PARTS

Page No	6	19	402	D	1
Date	98 05 01				

Instr. No.	
Replacing	96 01 01
Design	Bo V.

## SELECTO - QUICK 4-th Q-310, 340, 415, 450 / 600 - 700 Series

Set - Part No.	313414
----------------	--------

Item Pos. Repère Teil	Part No. Best nr. Référence Bestell.Nr.	ENGLISH	SVENSKA	FRANÇAIS	DEUTSCH	Quantity Antal Nombre Anzahl
--------------------------------	--	---------	---------	----------	---------	---------------------------------------

1	<b>516071</b> 1) <b>Valve</b>	<b>Ventil</b>	<b>Distributeur</b>	<b>Steuergerät</b>	<b>(Intertraco)</b>	1
	<b>516091</b> 2) <b>Valve</b>	<b>Ventil</b>	<b>Distributeur</b>	<b>Steuergerät</b>	<b>(Commercial Hyd.)</b>	
6	5044127	Quick Coupling	Snabbkoppling	Schnellkupplung	R 1/2" (F)	1
7	5044130	Dust Cover	Dammskydd	Staubkappe		1
8	5044128	Quick Coupling	Snabbkoppling	Schnellkupplung	R 1/2" (M)	1
9	5044129	Dust Cover	Dammskydd	Staubkappe		1
10	1120012	Adaptor	Adapter	Raccord union	R 1/2"	2
11	1120241	Hollow Screw	Banjoskruv	Vis creuse	Hohlschraube	2
13	5013853	Washer	Bricka	Joint	Dichtring	6
14	5013604	Washer	Bricka	Joint	Dichtring	2
26	5024369	Connector	Kontaktidon	Connecteur	Steckanschluß	1
26 B	5024409	Diode	Diod	Diode	1 Amp / 100 V.	(1)
28	5024202	Cable	Kabel	Câble	2 x 1,5 x 400	1
61	313486	Tube	Rör	Tube	Rohr	1
62	313487	Tube	Rör	Tube	Rohr	1
63	<b>516073</b>	Bolt	Bult	Boulon	Bolzen	4
64	5011053	Nut	Mutter	Écrou	Mutter	2
65	5013101	Washer	Bricka	Rondelle	Scheibe	2
66	5037021	'O'-Ring	O-ring	Joint torique	O-Ring	2
68	5024025	Clip	Kopplingsklämma	Borne de raccordement	Druckklemme	2

### Note

Parts included / Ingående detaljer / Eléments inclus / Einzelteile

1) Leaf / Blad / Feuille / Blatt 6 17 251

2) Leaf / Blad / Feuille / Blatt 6 17 255

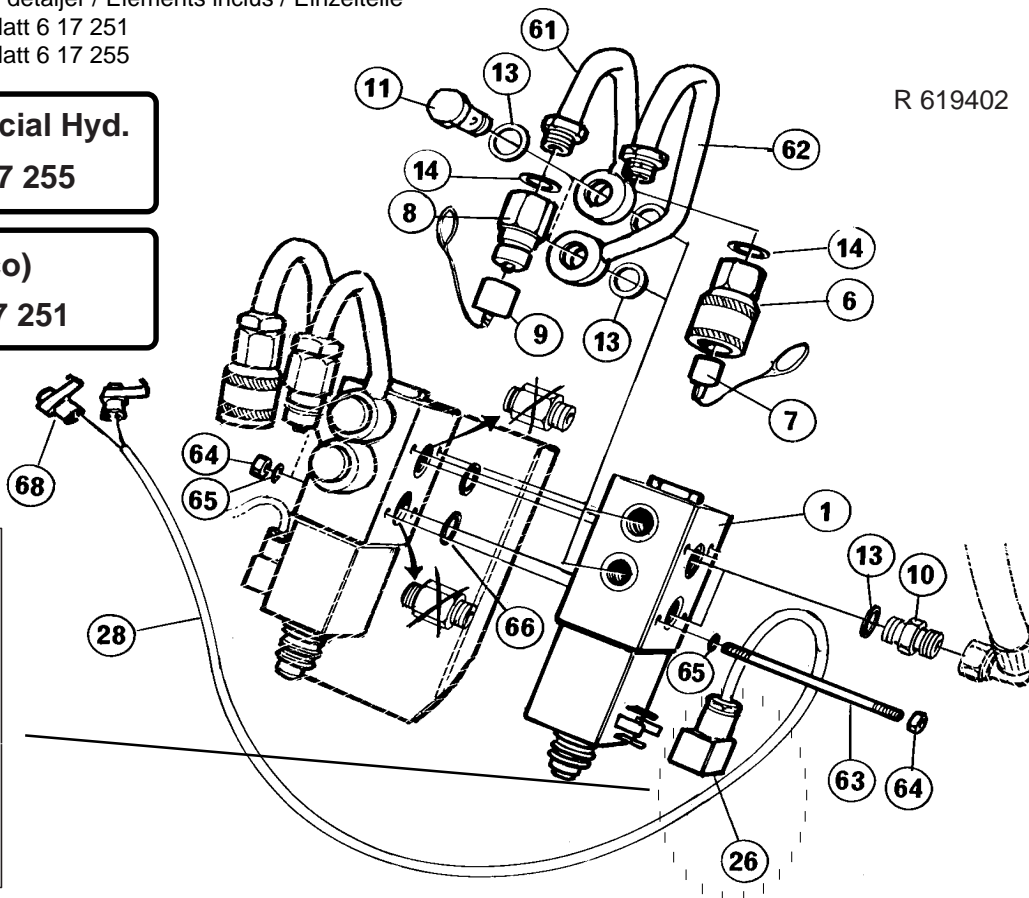
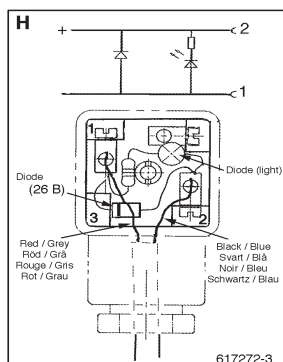
### VALVE (Commercial Hyd.)

Page 6 17 255

### VALVE (Intertraco)

Page 6 17 251

R 619402





# SPARE PARTS

## CONTROL VALVE Manöverventil / Distributeur Steuergerät (Intertraco)

Page No	6	17	251	C	1
Date	96 01 01				

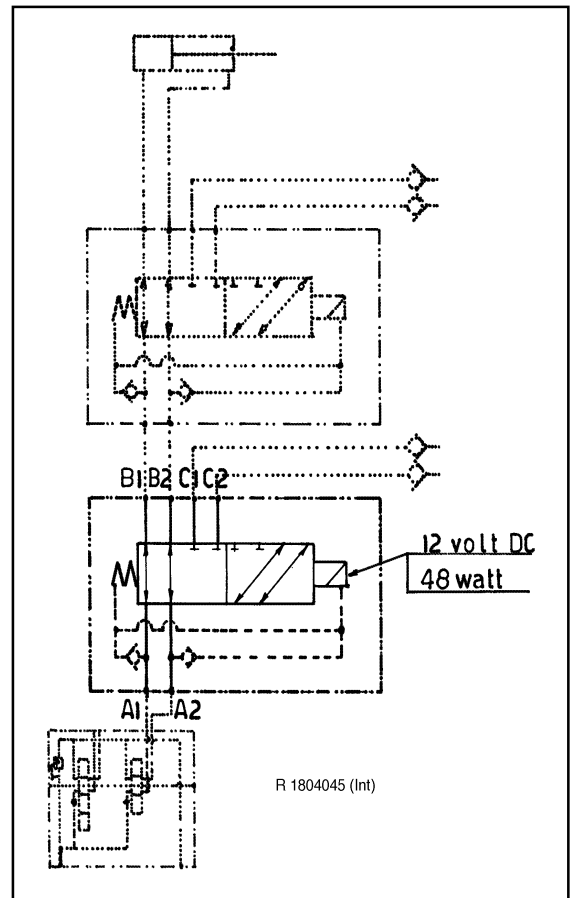
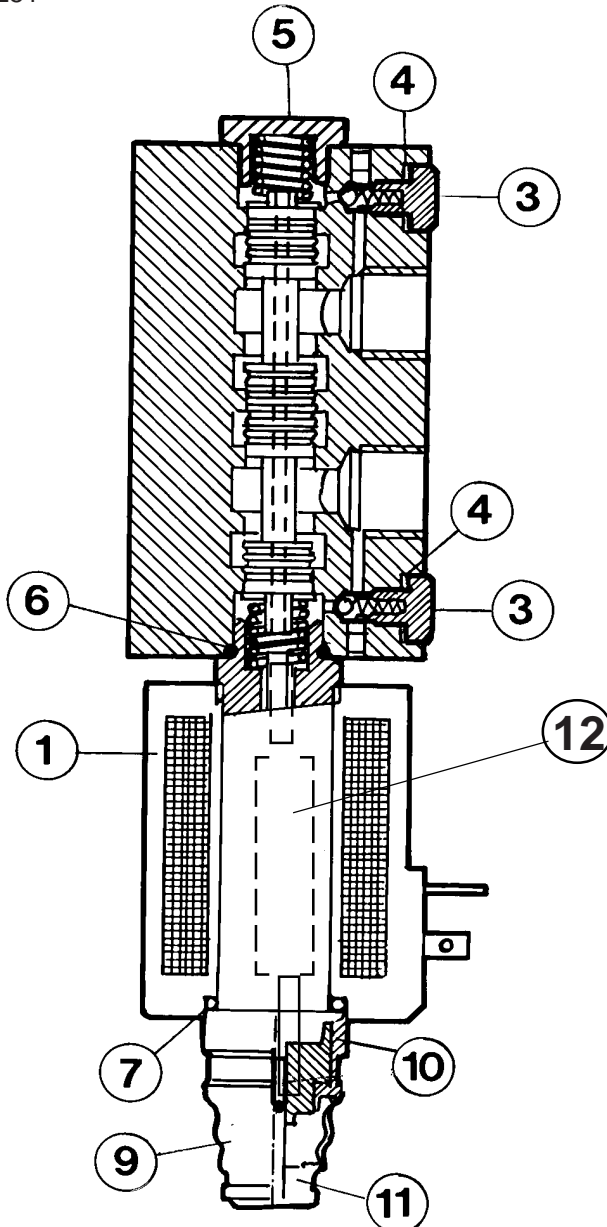
Instr. No.	
Replacing	95 03 02
Design	Bo V.

Set - Part No.	<b>516071</b>
----------------	---------------

Item Pos. Repère Teil	Part No. Best nr. Référence Bestell.Nr.	ENGLISH	SVENSKA	FRANÇAIS	DEUTSCH	Quantity Antal Nombre Anzahl
--------------------------------	--	---------	---------	----------	---------	---------------------------------------

1	516052	Solenoid	Solenoid	Solénoïde	Solenoid	80012 (12DC)	1
3	516081	Check Valve	Backventil	Clapet de retenue	Rückschlagventil	16010	2
4	5013601	Washer	Bricka	Joint	Dichtring	CU8,2 x 12	
5	516059	Plug	Plugg	Bouchon	Verschlußschraube	16018	1
6	5037201	'O'-Ring	O-ring	Joint torique	O-Ring	Ø 18,72 x 2,62	
7	5037248	'O'-Ring	O-ring	Joint torique	O-Ring	Ø 25,81 x 3,53	
9	516054	Boot	Damask	Capuchon	Schutzkappe	R-510	1
10	516053	Nut	Mutter	Écrou	Mutter	21448	1
11	516057	Button	Tryckknapp	Bouton	Knopf	21449	1
12	516056	Core, compl.	Kärna, kpl.	Coeur, compl.	Kern, kompl.	Tcc / 10 / U4 / MAN	1

R 617251





# SPARE PARTS

Page No	6	17	255	C	1
Date	96 01 01				

## CONTROL VALVE Manöverventil / Distributeur Steuergerät (Commercial)

Set - Part No.

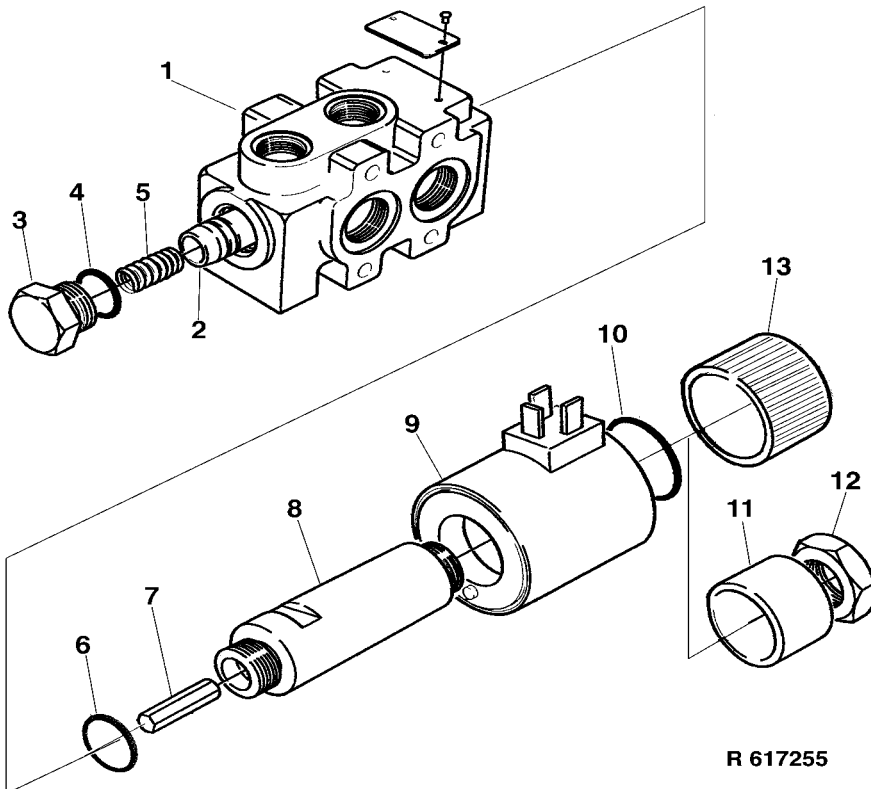
**516091**

Instr. No.	
Replacing	95 03 01
Design	Bo V.

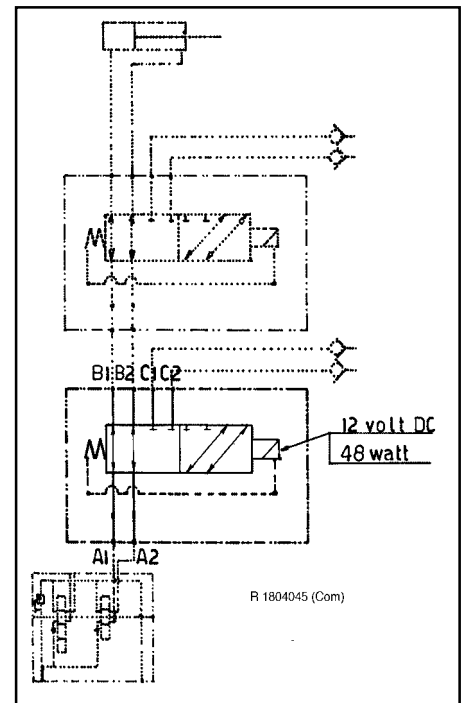
Item Pos. Repère Teil	Part No. Best nr. Référence Bestell.Nr.	ENGLISH	SVENSKA	FRANÇAIS	DEUTSCH	Quantity Antal Nombre Anzahl
--------------------------------	--	---------	---------	----------	---------	---------------------------------------

1	---	Housing	Hus	Carter	Gehäuse	1
2	---	Spool	Slid	Tiroir	Schieber	1
3	516092	Plug	Plugg	Bouchon	Verschlußschraube	345 0310 211 1
4	516093	'O'-Ring	O-ring	Joint torique	O-Ring	Ø19,2 x 2,46 NIT. 90Sh 1
5	516094	Spring	Fjäder	Ressort	Feder	345 0510 212 1
6	516095	'O'-Ring	O-ring	Joint torique	O-Ring	Ø 24 x 2,5 VITON.75 Sh 1
7	516096	Push Rod	Tryckpinne	Goupille	Druckstift	345 0510 254 1
8	516097	Pressure Tube	Tryckrör	Tuyau de pression	Druckrohr	345 0510 253 1
9	516098	Solenoid	Solenoid	Solénoïde	Solenoid	3450510246 (12DC) 1
10	5037029	'O'-Ring	O-ring	Joint torique	O-Ring	Ø 30 x 2,0 NITRI L.70Sh 1
11	516099 1)	Spacer	Distans	Douille de paisseur	Distanzhülse	345 0510 256 -
12	516100 1)	Nut	Mutter	Écrou	Mutter	M 24 x 1,5 -
13	516101	Retainer	Mutterhållare	Ecrou de fixation	Fixer - Mutter	345 0510 282 1

1) Replaced by Part No 516101



R 617255





# SPARE PARTS

## SELECTO - FIX Designed for Selecto- Quick (Loader Part) Q-310, 340, 415, 450, 600-series, 790

Page No **4 15 015 A 1**

Date **94 10 01**

Set - Part No.

**301561**

Instr. No.  
Replacing  
Design **FASTER**

Item Part No.  
Pos. Best nr.  
Repère Référence  
Teil Bestell.Nr.

ENGLISH

SVENSKA

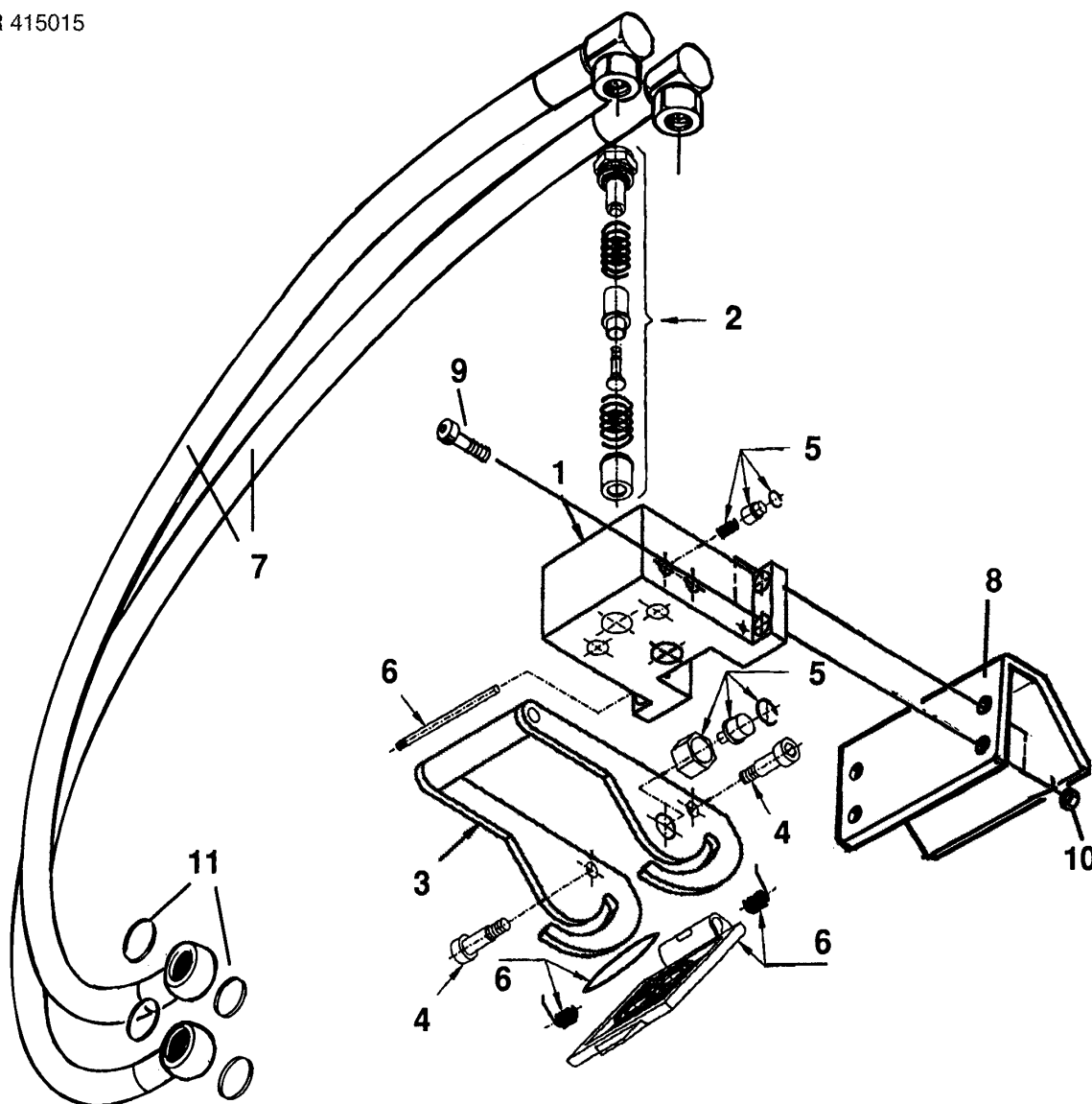
FRANÇAIS

DEUTSCH

Quantity  
Antal  
Nombre  
Anzahl

5045405							1
1	301567	Lower Part	Underdel	Partie inférieure	Unterteil	Kit P206 F	1
2	301568	Coupling (F)	Snabbkoppling (F )	Coupleur	Schnellkupplung	FF NB38-1/38G F	2
3	301565	Lever	Låsbygel	Levier	Klemmbügel	Kit LP2	1
4	301547	Screw	Skruv	Vis	Schraube	Kit VP4	2
5	301548	Safety Kit	Låsknapp	Verouillage	Sperrknopf	Kit SP4	1
6	301566	Dust Cap	Lock	Couvercle	Schutzkappe	TA P2	1
7	1103297	Hose	Slang	Flexible	Schlauch	R 1/2 - 570	2
8	301563	Support	Fäste	Support	Halter		1
9	5004062	Screw	Skruv	Vis	Schraube	MC6S 8 x 25	4
10	5011553	Nut	Mutter	Ecrou	Mutter	M 8 Locking	4
11	5013853	Washer	Bricka	Rondelle	Scheibe	GBR 1/2" (Tredo)	4

R 415015





# SPARE PARTS

## SELECTO - FIX

Designed for Selecto- Quick  
(Implement Part)

Page No. 4 15 016 A 1

Date 95 05 01

Set - Part No.

**301562**

Item  
Pos.  
Repère  
Teil

Part No.  
Best nr.  
Référence  
Bestell.Nr.

ENGLISH

SVENSKA

FRANÇAIS

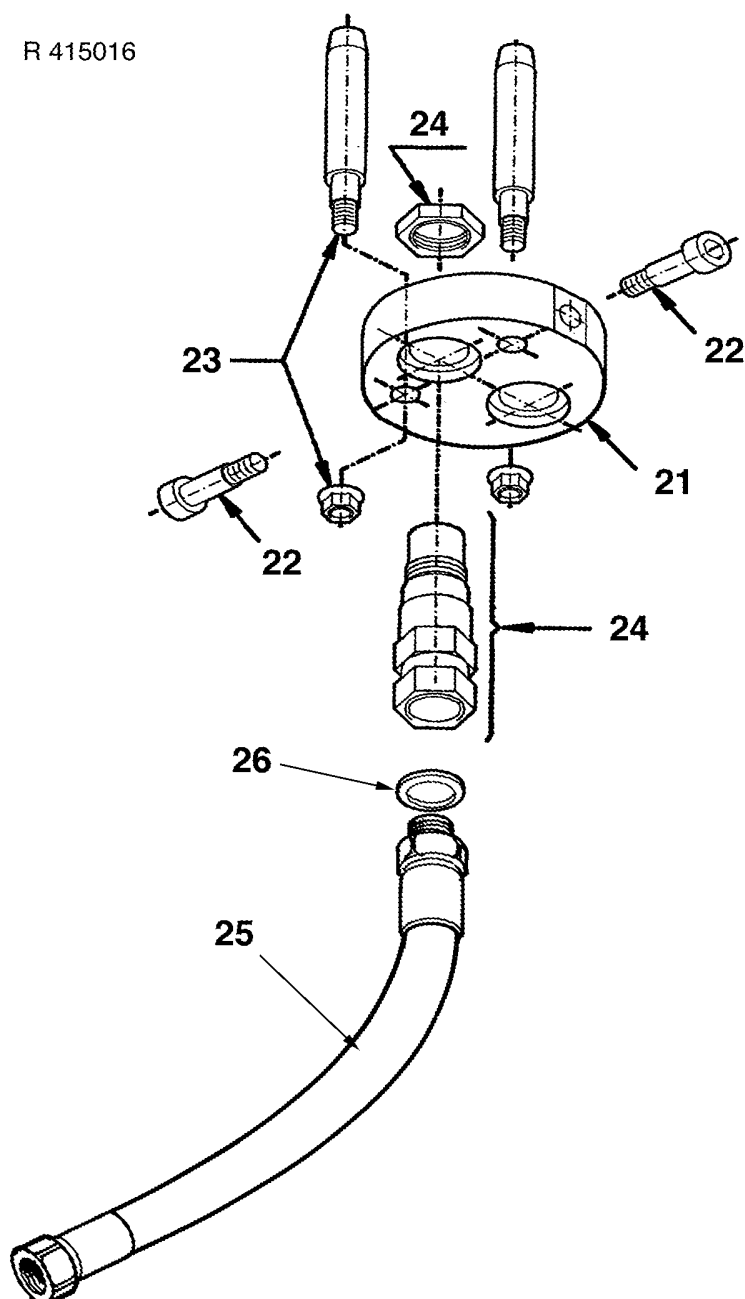
DEUTSCH

Quantity  
Antal  
Nombre  
Anzahl

### 5045404

21	301564	Upper Part	Överdel	Partie supérieure	Oberteil	Kit P206 M	1
22	301547	Screw	Skruv	Vis	Schraube	Kit VP4	2
23	301554	Dowel	Styrpinne	Broche de guidage	Führungsstift	Kit GP 4	2
24	301569	Coupler (M)	Snabbkoppling (M)	Coupleur	Schnellkupplung	2FFNP 38-12G M	2
25	1103298	Hose	Slang	Flexible	Schlauch	R 1/2 - 165	2
26	5013853	Washer	Bricka	Rondelle	Scheibe	GBR 1/2" (Tredo)	2

R 415016





# SPARE PARTS

Page No **4 15 070 B 1**

Date **98 05 10**

## SOFTDRIVE

Set - Part No.

**314010**

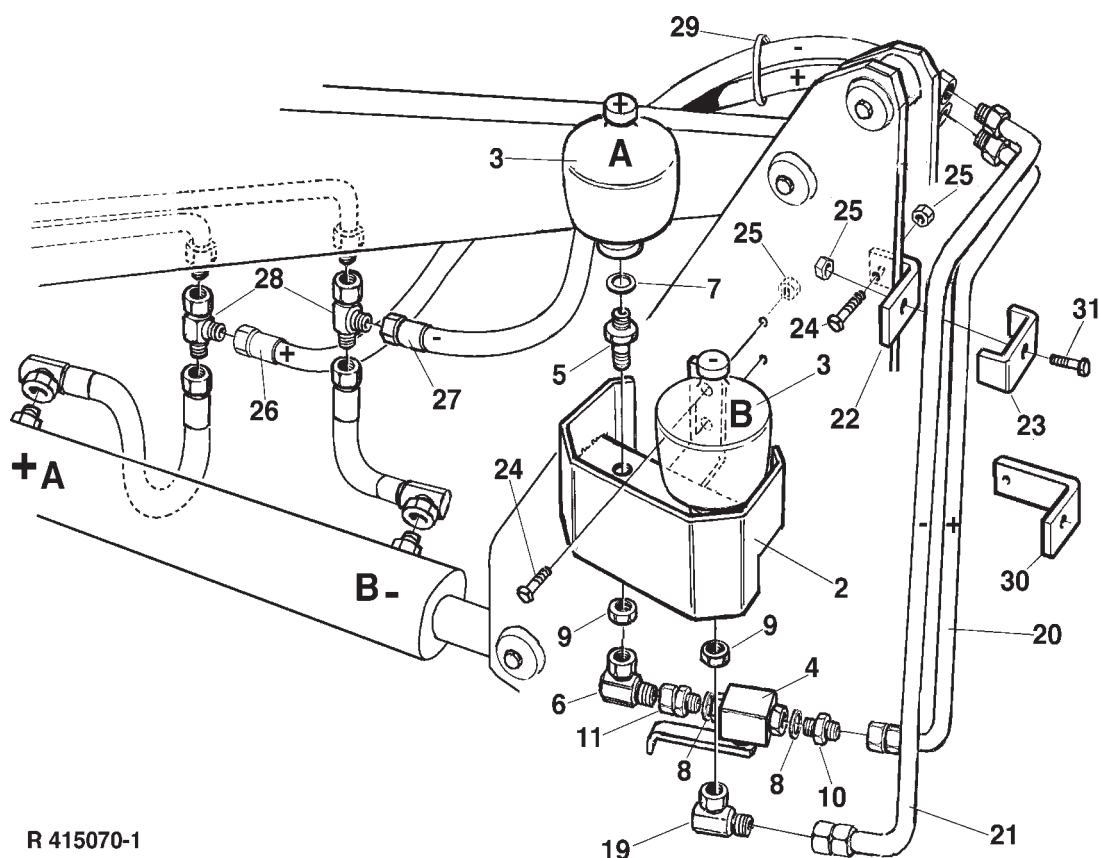
Instr. No.

Replacing

Design **A.Sj**

Item Pos. Repère Teil	Part No. Best nr. Référence Bestell.Nr.	ENGLISH	SVENSKA	FRANÇAIS	DEUTSCH	Quantity Antal Nombre Anzahl
--------------------------------	--	---------	---------	----------	---------	---------------------------------------

1	<b>314030</b>	Softdrive, assembl	. Softdrive, montera	d Softdrive, assembl	é Softdrive, teilmontiert	1
2	314031	Bracket	Fäste	Equerre	Halter	(1)
3	5045140	Accumulator (LP)	Ackumulator (LP)	Accumulateur seul	Akkumulator	0,5 l / 20 bar (2)
4	513005	Shut-off valve	Avstängningskran	Robinet d'arrêt	Absperrhahn	R 3/8" (1)
5	1120158	Adaptor	Koppling	Raccord union	Nippel	R 3/8" - R 1/2" (2)
6	1120099	Adaptor	Koppling	Raccord union	Nippel	R 3/8" - 90° (1)
7	5013853	Washer	Bricka	Joint	Dichtring	1/2" (Tredo) (2)
8	5013852	Washer	Bricka	Joint	Dichtring	3/8" (Tredo) (2)
9	5011756	Nut	Mutter	Ecrou	Mutter	R 3/8" (2)
10	1120010	Adaptor	Koppling	Raccord union	Nippel	R 3/8" (1)
11	1120081	Adaptor	Koppling	Raccord union	Nippel	R 3/8" (1)
19	1120099	Adaptor	Koppling	Raccord union	Nippel	R 3/8" - 90° 1
20	314035	Oil Pipe	Oljerör	Tuyau d'huile	Ölrohr	(1) 1
21	314036	Oil Pipe	Oljerör	Tuyau d'huile	Ölrohr	(2) 1
22	314075	Bracket	Fäste	Equerre	Halter	1
23	144115	Pipe Anchor	Klammer	Bride de fixation	Rohrschelle	1
24	5002053	Screw	Skruv	Vis	Schraube	M 8 x 30 3
25	5011553	Nut	Mutter	Ecrou	Mutter	M 8 Loc-king 4
26	1103211	Hose	Slang	Flexible	Schlauch	R 3/8" - 800 1
27	1103424	Hose	Slang	Flexible	Schlauch	R 3/8" - 700 1
28	5027454	Adaptor	Koppling	Raccord union	Nippel	L - R 3/8 2
29	5033606	Braide	Buntband	Collier	Bundband	2
30	314074	Bracket	Fäste	Equerre	Halter	1
31	5002054	Screw	Skruv	Vis	Schraube	M 8 x 35 1



R 415070-1





# SPARE PARTS

## HYDRO - QUICK MK 2

Aimed for control valve

Page  
No 4 15 011 E 1

Date 97 03 01

Set - Part No.

**301542**

Item Pos. Repère Teil	Part No. Best nr. Référence Bestell.Nr.	ENGLISH	SVENSKA	FRANÇAIS	DEUTSCH	Quantity Antal Nombre Anzahl
1	301543	Lower Plate	Underdel	Partie inférieure	Unterteil	PS06 F 1
2	301544	Coupler (F)	Snabbkoppling (F )	Coupleur	Schnellkupplung	FFNB 38-2/2215 F 4
3	301546	Lever	Låsbygel	Étrier de fixation	Klemmbügel	L P6 1
4	301547	Screw	Skruv	Vis	Schraube	KIT VP4 2
5	301548	Safety Kit	Låsknapp	Verrouillage	Sperrknopf	KIT SP4 1
6	301549	Dust Cap	Lock	Couvercie	Schutzkappe	TA P6 1
7	301552	Coupling	Koppling	Raccord union	Rohrverbindung	AD 12G-DMLR15 4
8	301551	Support	Fäste	Support	Halter	1
9	5002078	Screw	Skruv	Vis	Schraube	M6S 10 x 40 2
10	5011054	Nut	Mutter	Ecrou	Mutter	M6M 10 2
11	5013110	Washer	Bricka	Rondelle	Scheibe	BRB 10,5 x 22 4
21	301553	Upper Plate	Överdel	Partie supérieure	Oberteil	2PS06 M 1
22	301569 1)	Coupler (M)	Snabbkoppling (M )	Coupleur	Schnellkupplung	2FFNP 38-20/12 M 4
22B	5045407	Seal	Packning	Joint	Dichtung	2FFNP 38M (1)
23	301554	Dowel	Styrpinne	Broche de guidage	Führungsstift	KIT GP 4 2
24	301547	Screw	Skruv	Vis	Schraube	KIT VP4 2
25	301550	Support	Fäste	Support	Halter	1
26	5002089	Screw	Skruv	Vis	Schraube	M6S 10 x 25 1
27	5013110	Washer	Bricka	Rondelle	Scheibe	BRB 10,5 x 22 1

1) Replaced Part No. 301545

R 415011

