



Parts List Manual

Front Loader w/72" Bucket

Model 59A40066727

Cub Cadet Yanmar LLC
P.O. Box 361052
Cleveland, Ohio 44136-1052

PRINTED IN U.S.A.

769-04834
(March 9, 2009)

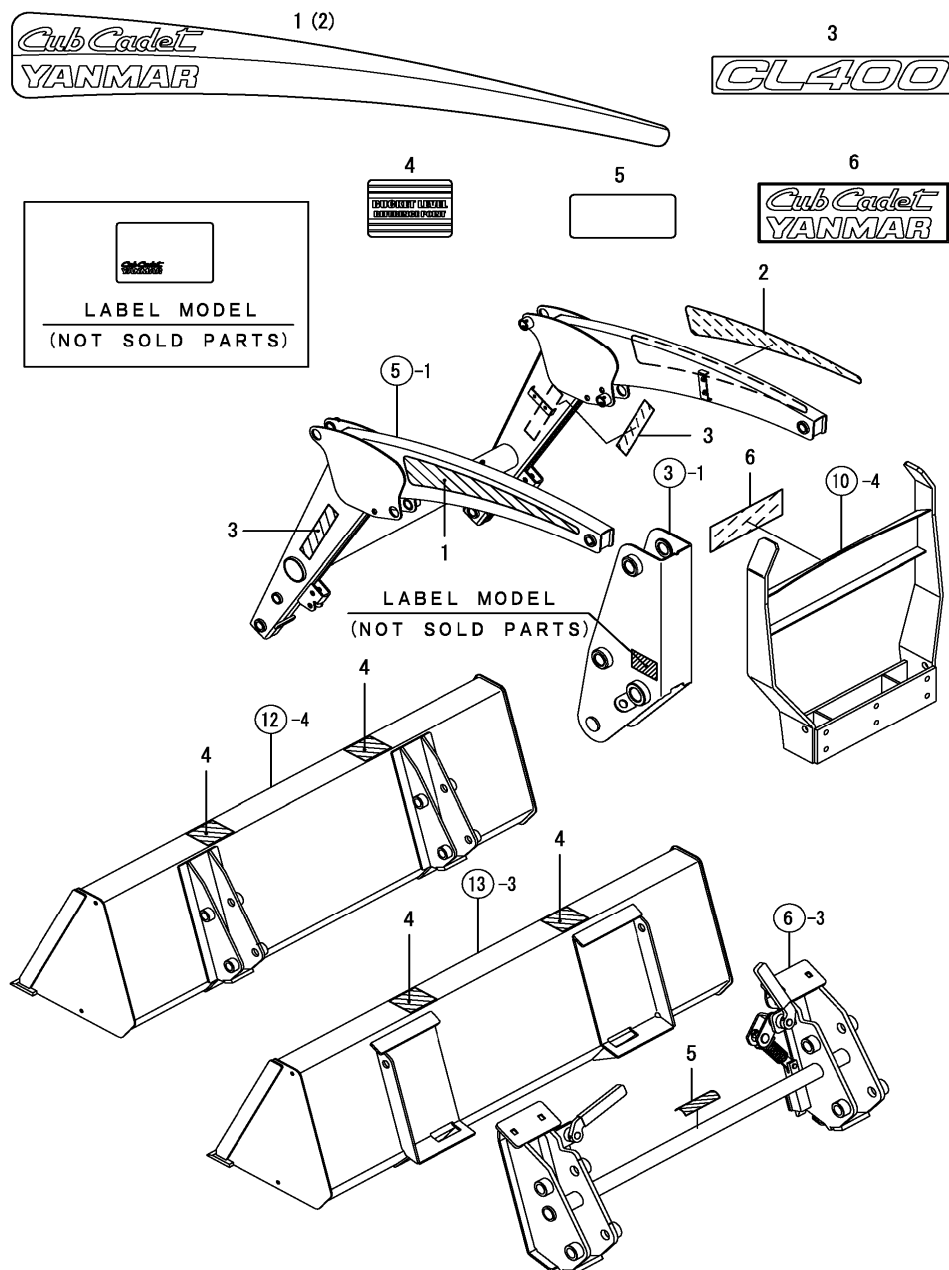
LOADER INDEX

FIG. NO. GROUP NAME

1	LABELS
2	LABELS - SAFETY
3	SUPPORT FRAME
4	BRACKET
5	LIFT ARM
6	QUICK ATTACH KIT
7	DUMP LINK
8	CYLINDER
9	HYDRAULIC PIPING
10	PROTECTOR
11	STAND
12	PIN ON BUCKET
13	QUICK ATTACH BUCKET

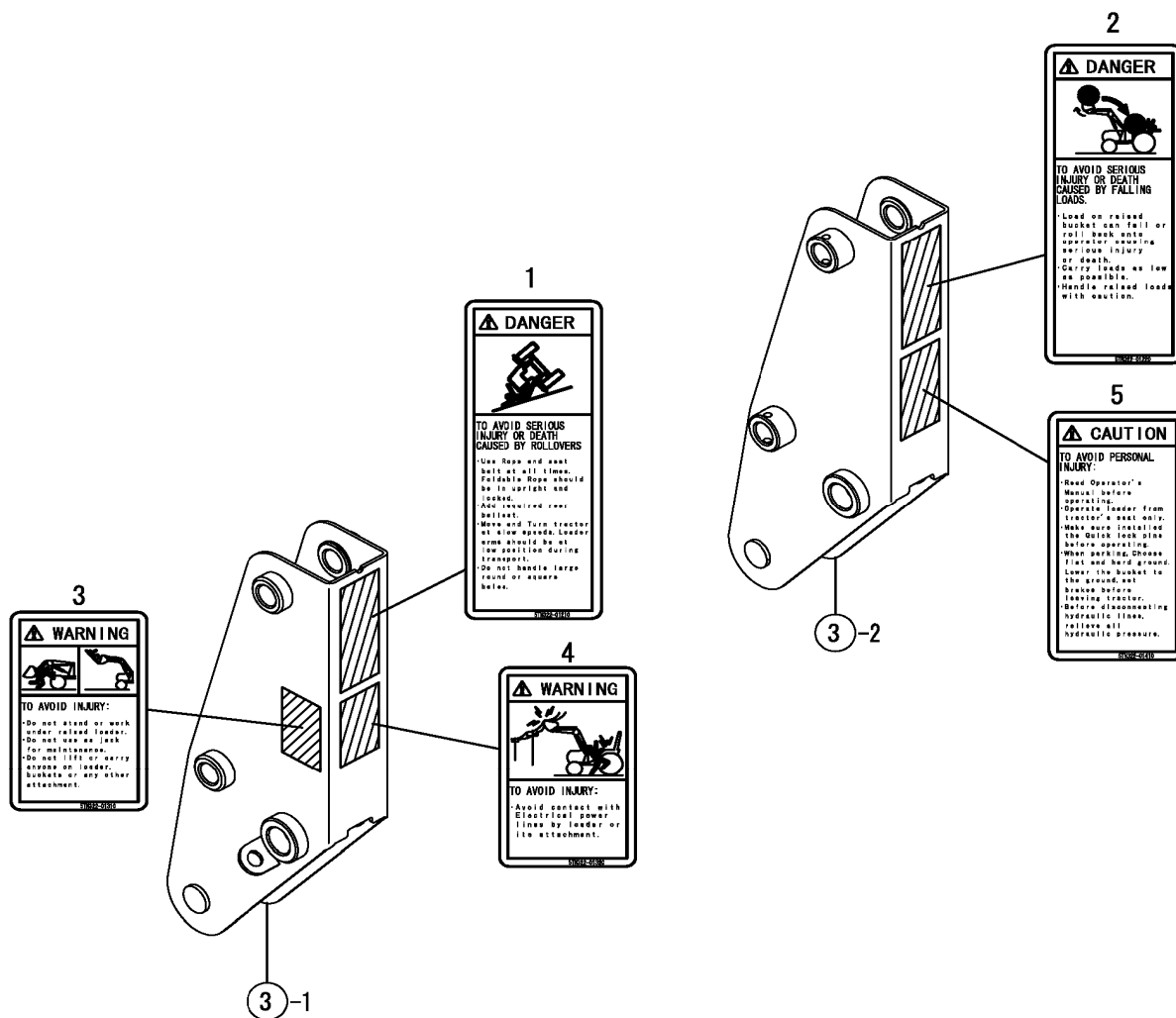
NOTES:

FIG. 1 LABELS



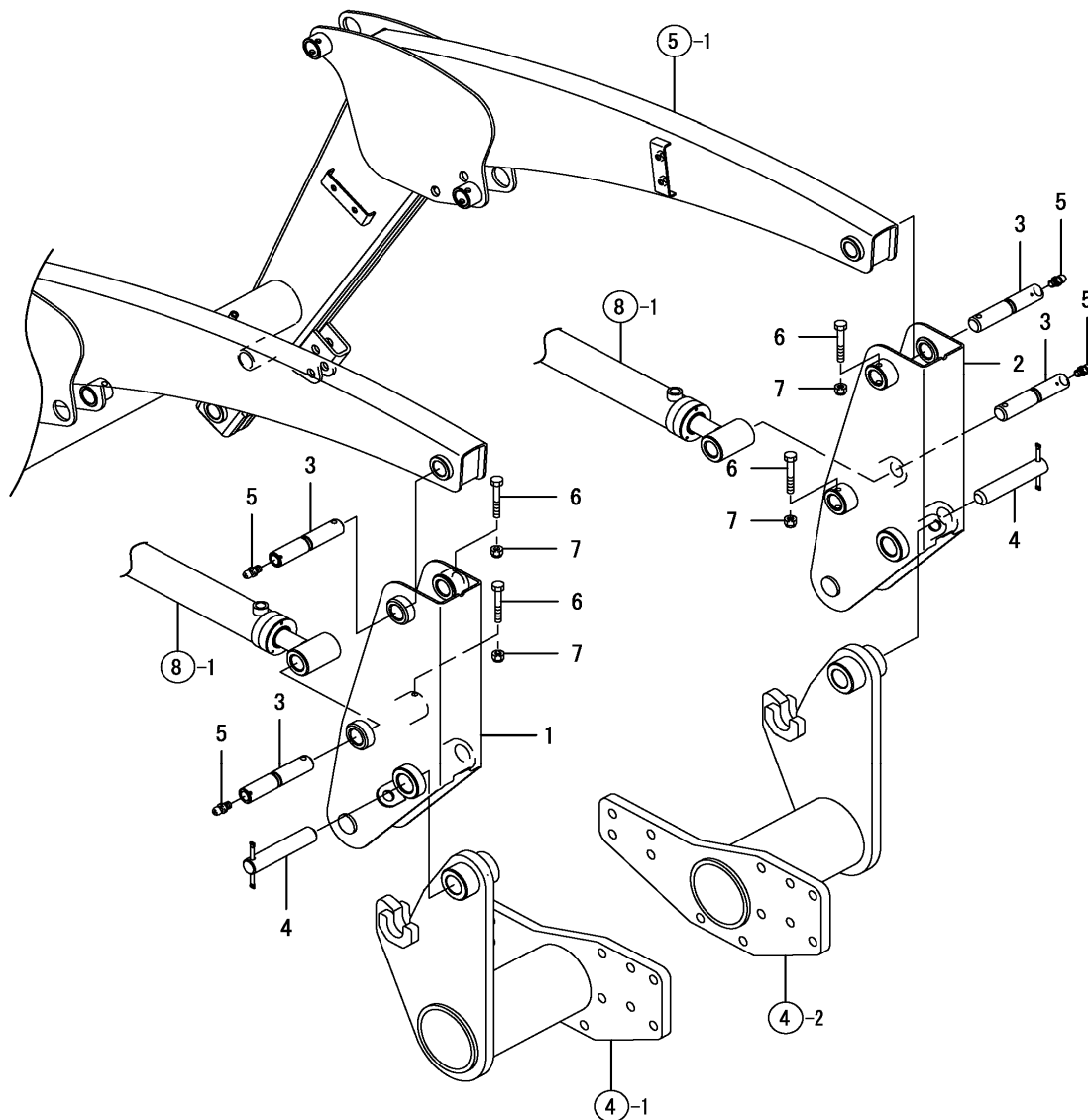
REF NO.	PART NUMBER	DESCRIPTION	QTY
1	CY-1TN322-01510	LABEL, LOGO L.H.	1
2	CY-1TN322-01520	LABEL, LOGO R.H.	1
3	CY-1TN322-01550	LABEL, MODEL CL400	2
4	CY-1TN322-01610	LABEL, BUCKET	2
5	CY-1TN322-01420	LABEL, CAUTION QUICK	1
6	CY-1TN322-01630	LABEL, GRILL GAURD	1

FIG. 2 LABELS SAFETY



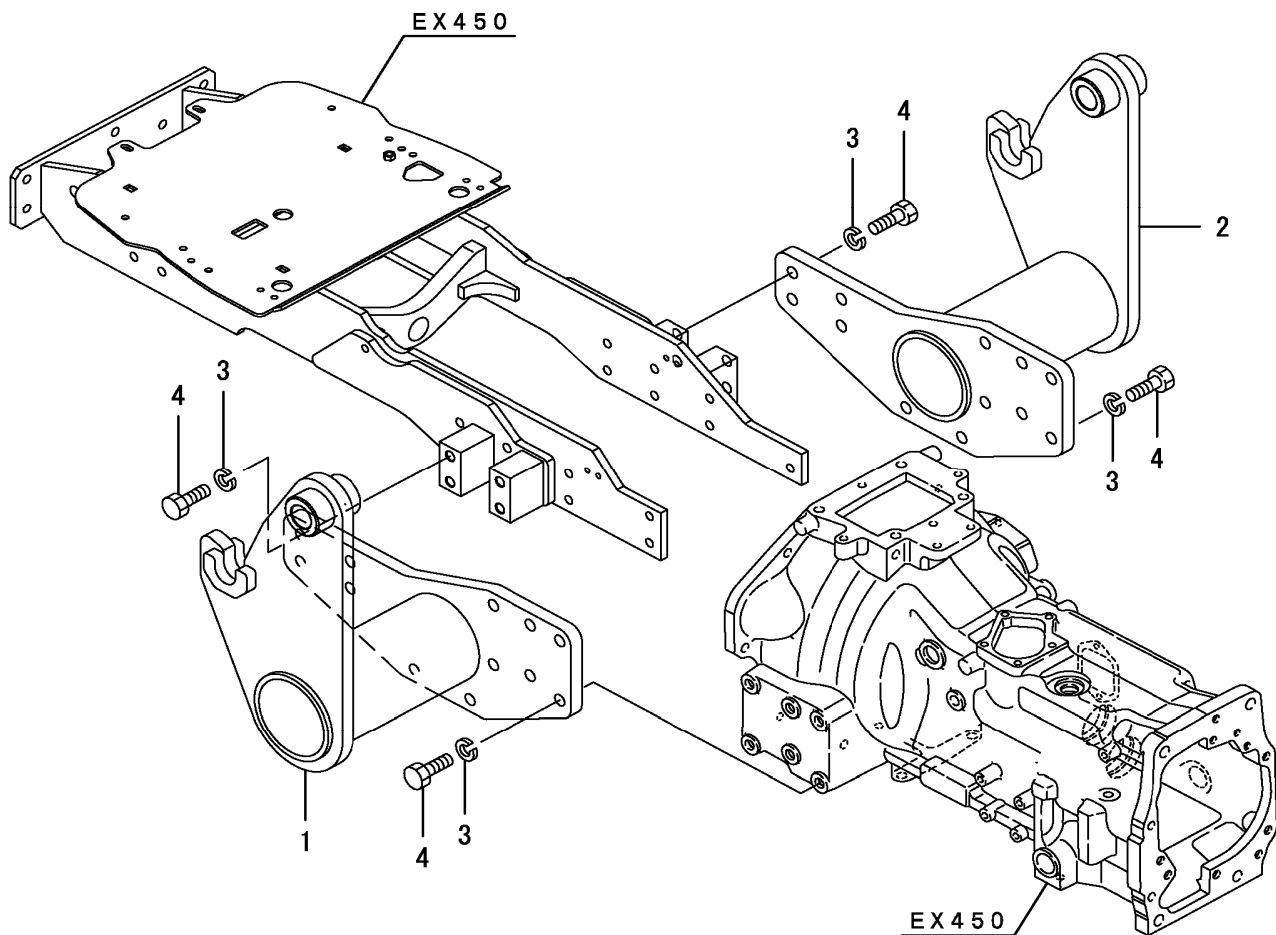
REF NO.	PART NUMBER	DESCRIPTION	QTY
1	CY-1TN322-01210	LABEL,DANGER,ROLL	1
2	CY-1TN322-01220	LABEL,DANGER,FALL	1
3	CY-1TN322-01310	LABEL,WARNING	1
4	CY-1TN322-01320	LABEL,WARNING,SHOCK	1
5	CY-1TN322-01410	LABEL,CAUTION	1

FIG. 3 SUPPORT FRAME



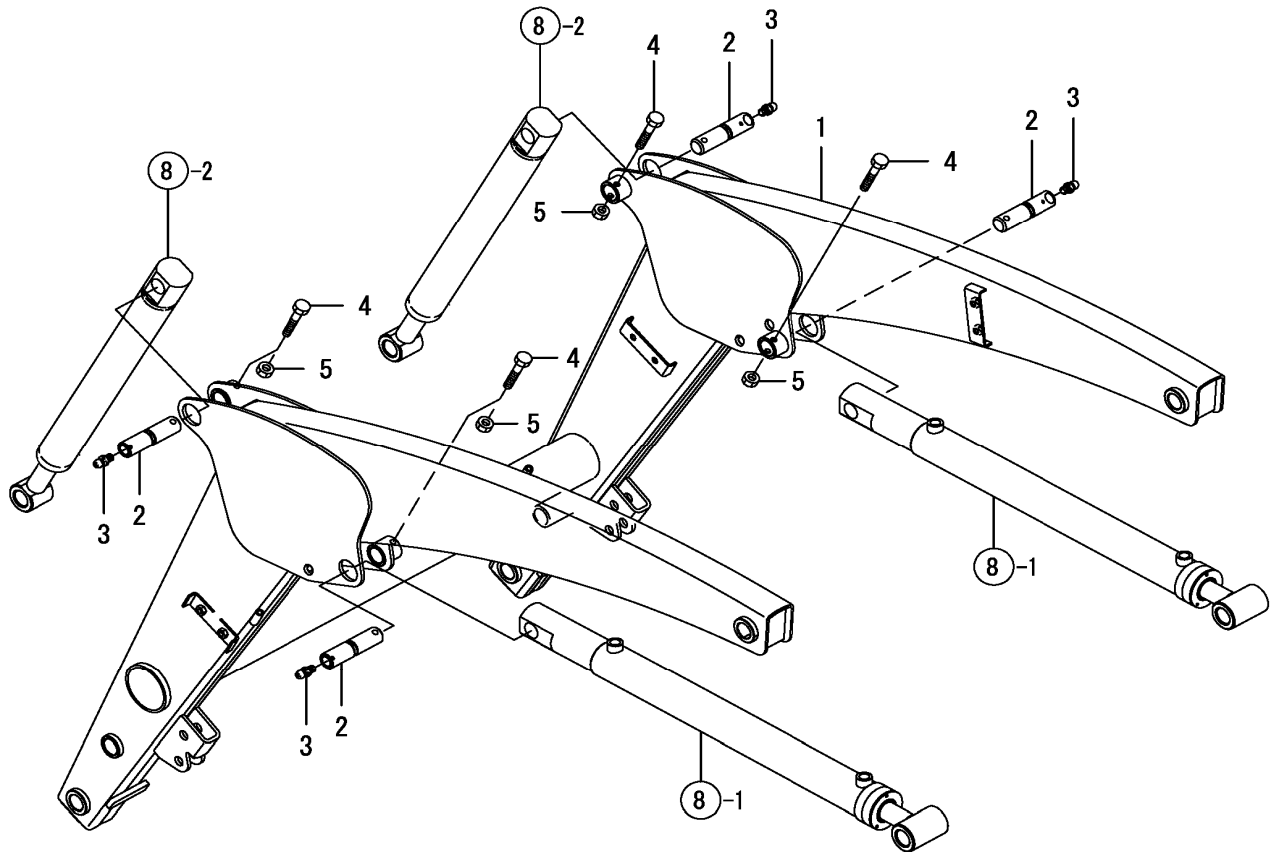
REF NO.	PART NUMBER	DESCRIPTION	QTY
1	CY-1TN322-11010	SUPPORT PL ASSY, L	1
2	CY-1TN322-11020	SUPPORT PL ASSY, R	1
3	CY-1TN322-73150	9/8-155 PIN	4
4	CY-1TN322-73310	LOCK PIN CMP	2
5	CY-24761-010000	FITTING, M6F	4
6	CY-26116-080602	BOLT, 8 X 60	4
7	CY-26346-080002	U-NUT, 8	4

FIG. 4 BRACKET



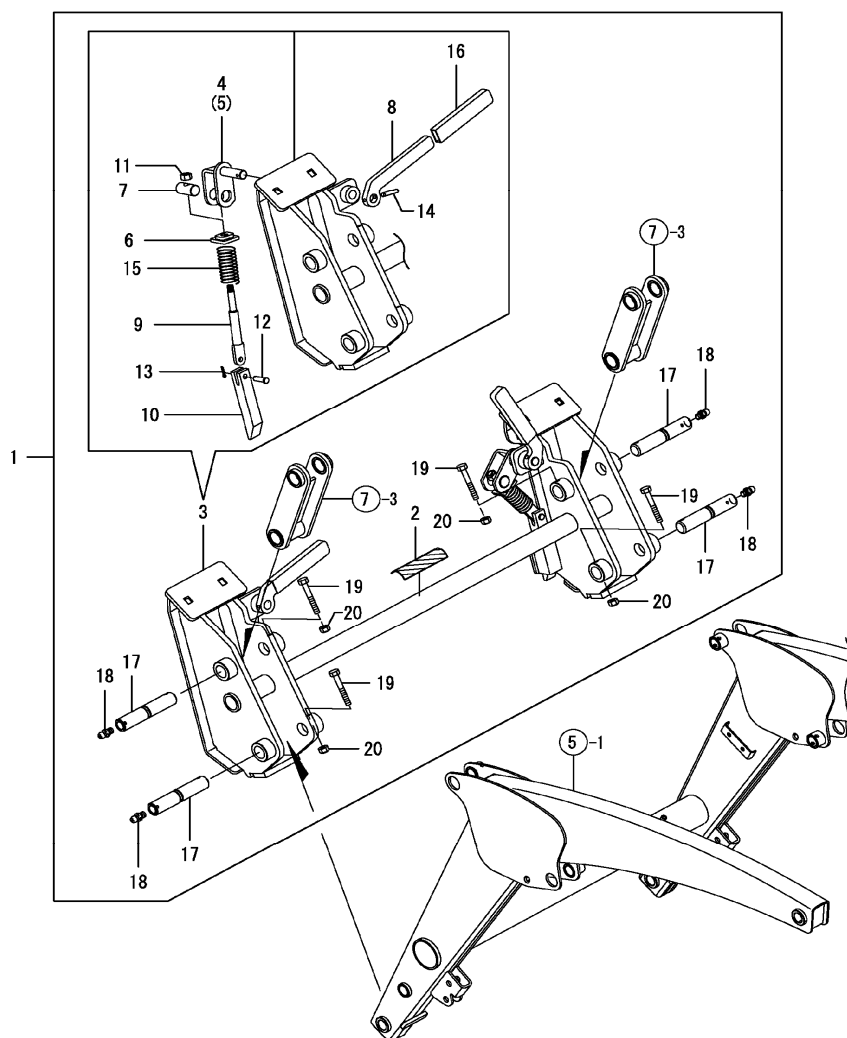
REF NO.	PART NUMBER	DESCRIPTION	QTY
1	CY-1TN322-13100	BRACKET L CMP	1
2	CY-1TN322-13200	BRACKET R CMP	1
3	CY-194065-34170	WASHER 16, LOCK	20
4	CY-26076-160502	BOLT, 16 X 50	20

FIG. 5 LIFT ARM



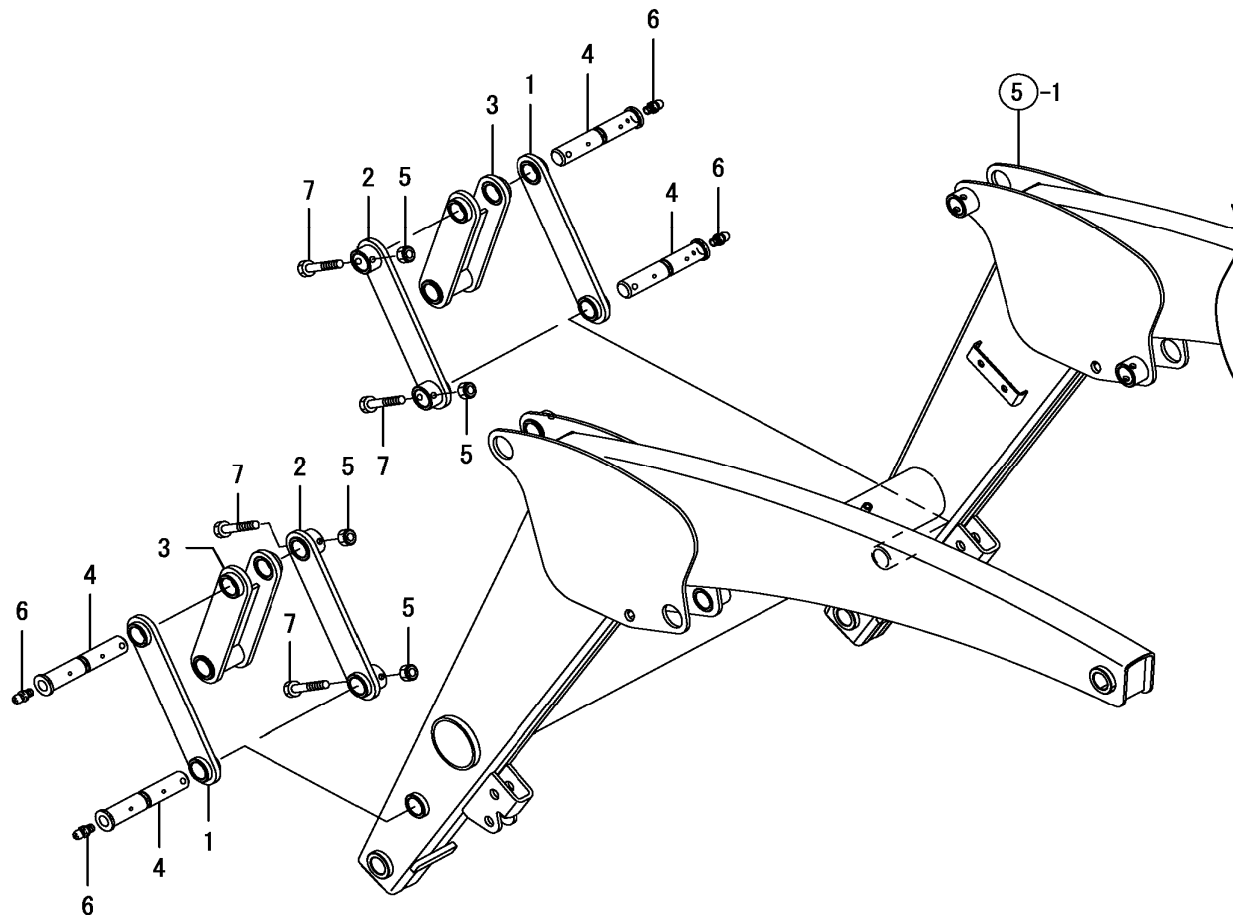
REF NO.	PART NUMBER	DESCRIPTION	QTY
1	CY-1TN322-21000	LIFT ARM CMP	1
2	CY-1TN322-73110	9/8-120 PIN	4
3	CY-24761-010000	FITTING, M6F	4
4	CY-26116-080502	BOLT, 8 X 50	4
5	CY-26346-080002	U-NUT, 8	4

FIG. 6 QUICK ATTACH KIT



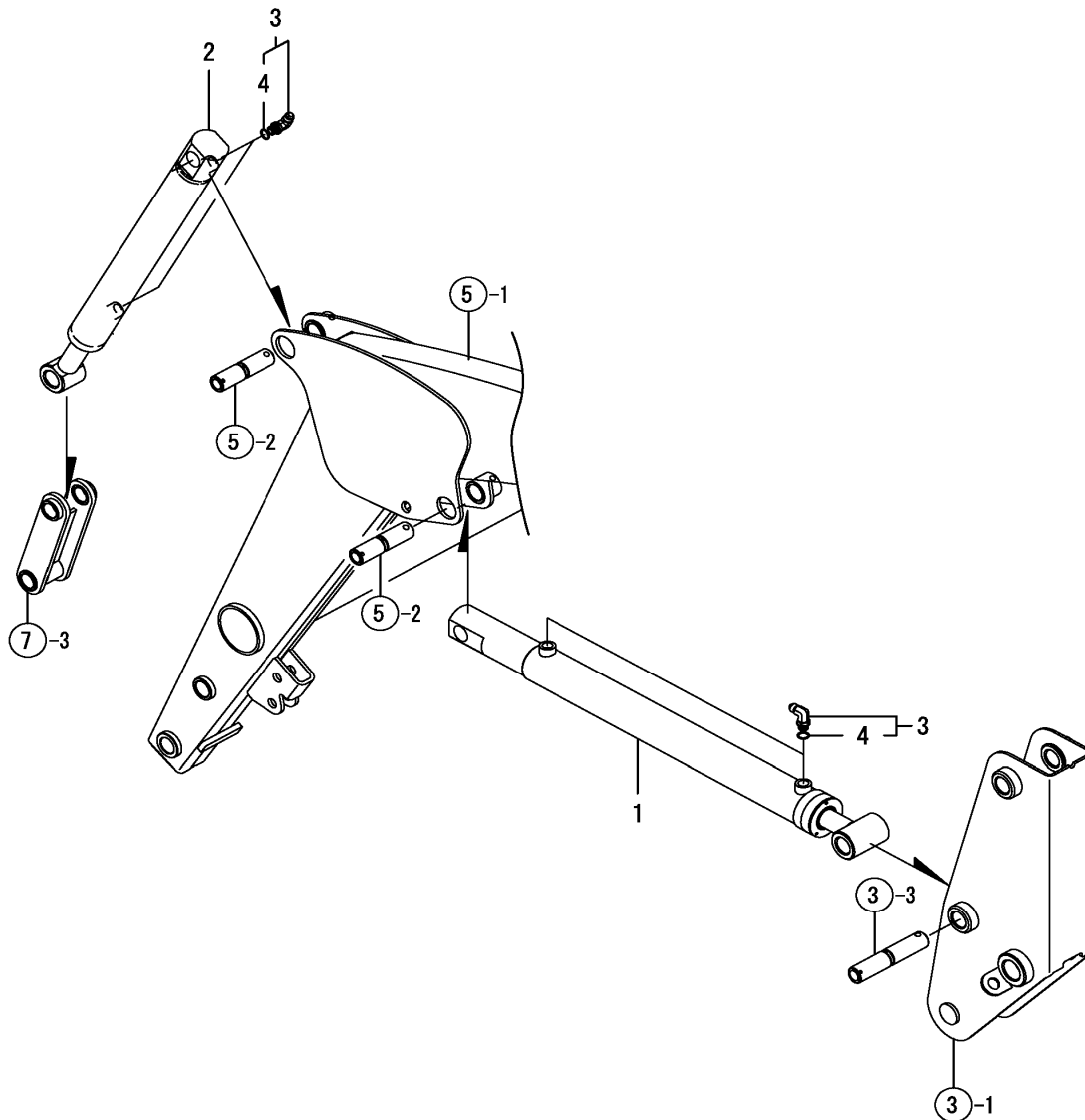
REF NO.	PART NUMBER	DESCRIPTION	QTY
1	CY-1TN322-23010	QUICK KIT, UNIVERSAL	1
2	CY-1TN322-01420	LABEL, CAUTION QUICK	1
3	CY-1TN322-23100	QUICK UNIT, UNIVERSAL	1
4	CY-1TN322-23130	LH PIVOT LOCK	1
5	CY-1TN322-23140	RH PIVOT LOCK	1
6	CY-1TN322-23150	GUIDE	2
7	CY-1TN322-23160	PIVOT PIN	2
8	CY-1TN322-23170	HANDLE PIVOT	2
9	CY-1TN322-23180	ROD	2
10	CY-1TN322-23190	LOCK BLOCK	2
11	CY-1TN322-23210	NUT HX 1/2-13 LOCK	2
12	CY-1TN322-23230	CLEVIS PIN	2
13	CY-1TN322-23240	COTTER PIN 1/8X1	2
14	CY-1TN322-23250	ROLL PIN	2
15	CY-1TN322-23270	SPRING	2
16	CY-1TN322-23290	CAP, RUBBER-BLACK	2
17	CY-1TN322-73150	9/8-155 PIN	4
18	CY-24761-010000	FITTING, M6F	4
19	CY-26116-080602	BOLT, 8 X 60	4
20	CY-26347-080002	U-NUT, 8	4

FIG. 7 DUMP LINK



REF NO.	PART NUMBER	DESCRIPTION	QTY
1	CY-1TN322-25100	LINK PLATE L CMP	2
2	CY-1TN322-25200	LINK PLATE R CMP	2
3	CY-1TN322-25300	LINK, FRONT CMP	2
4	CY-1TN322-73210	9/8 STEPPED PIN	4
5	CY-26346-080002	U-NUT, 8	4
6	CY-24761-010000	FITTING, M6F	4
7	CY-26116-080502	BOLT, 8 X 50	4

FIG. 8 CYLINDER



REF NO.	PART NUMBER	DESCRIPTION	QTY
1	CY-1TN322-38100	LIFT CYLINDER ASSY	2
2	CY-1TN322-38200	DUMP CYLINDER ASSY	2
3	CY-1TN322-38910	JOINT, 90SAE9/16-18	8
4	CY-1TN322-38930	PACKING, JOINT	8

FIG. 8 HYDRAULIC PIPING

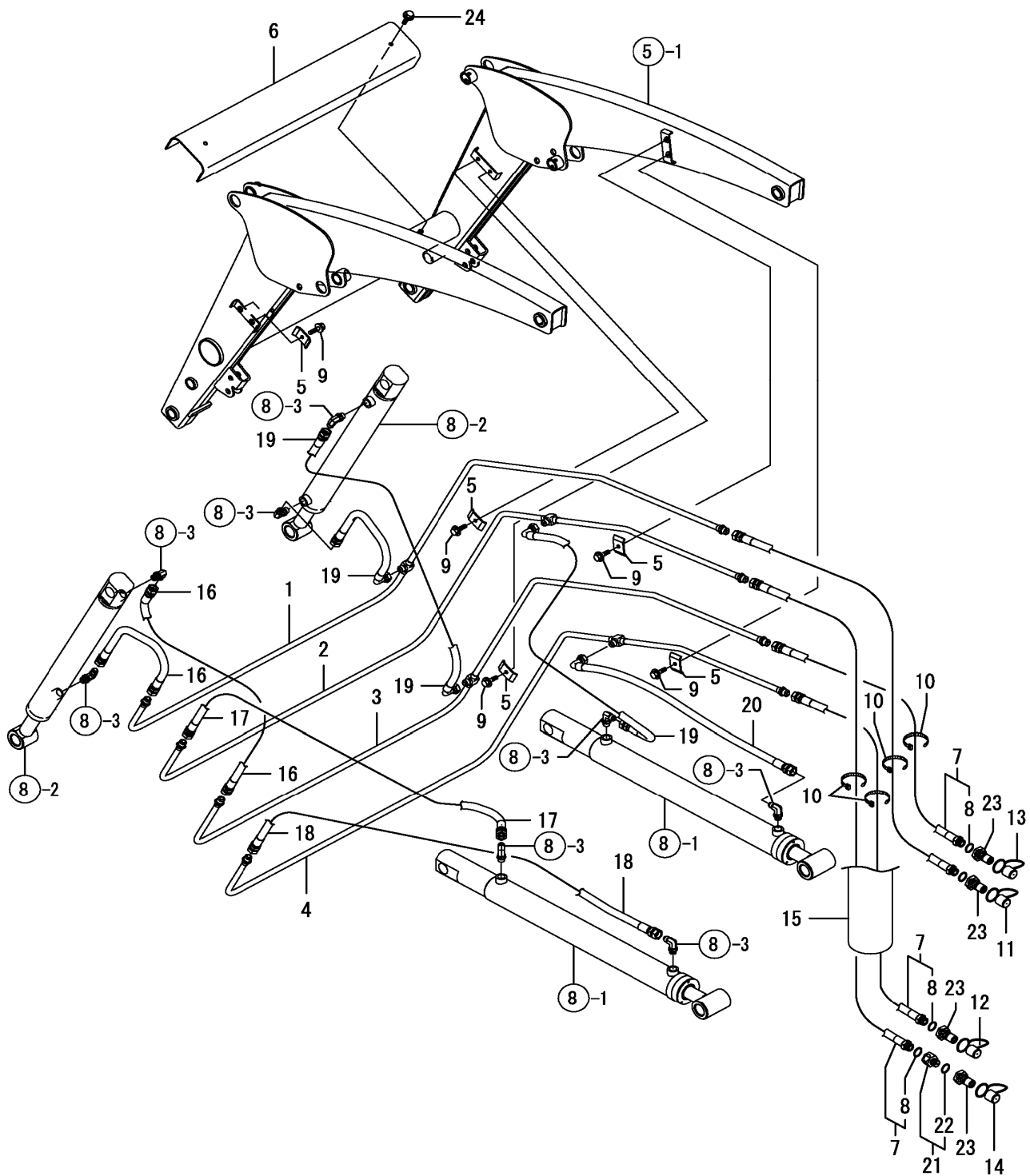
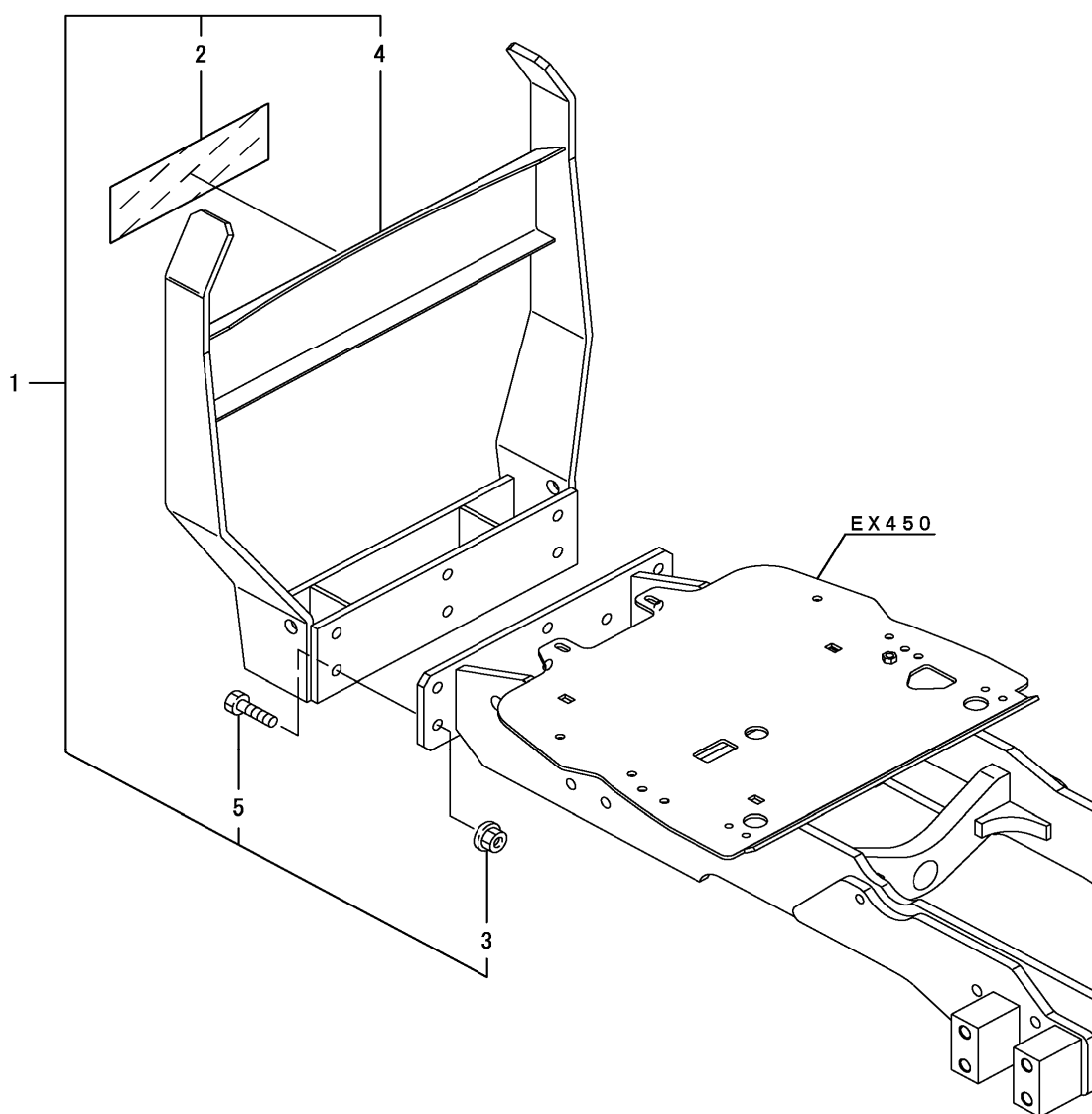


FIG. 9 HYDRUALIC PIPING

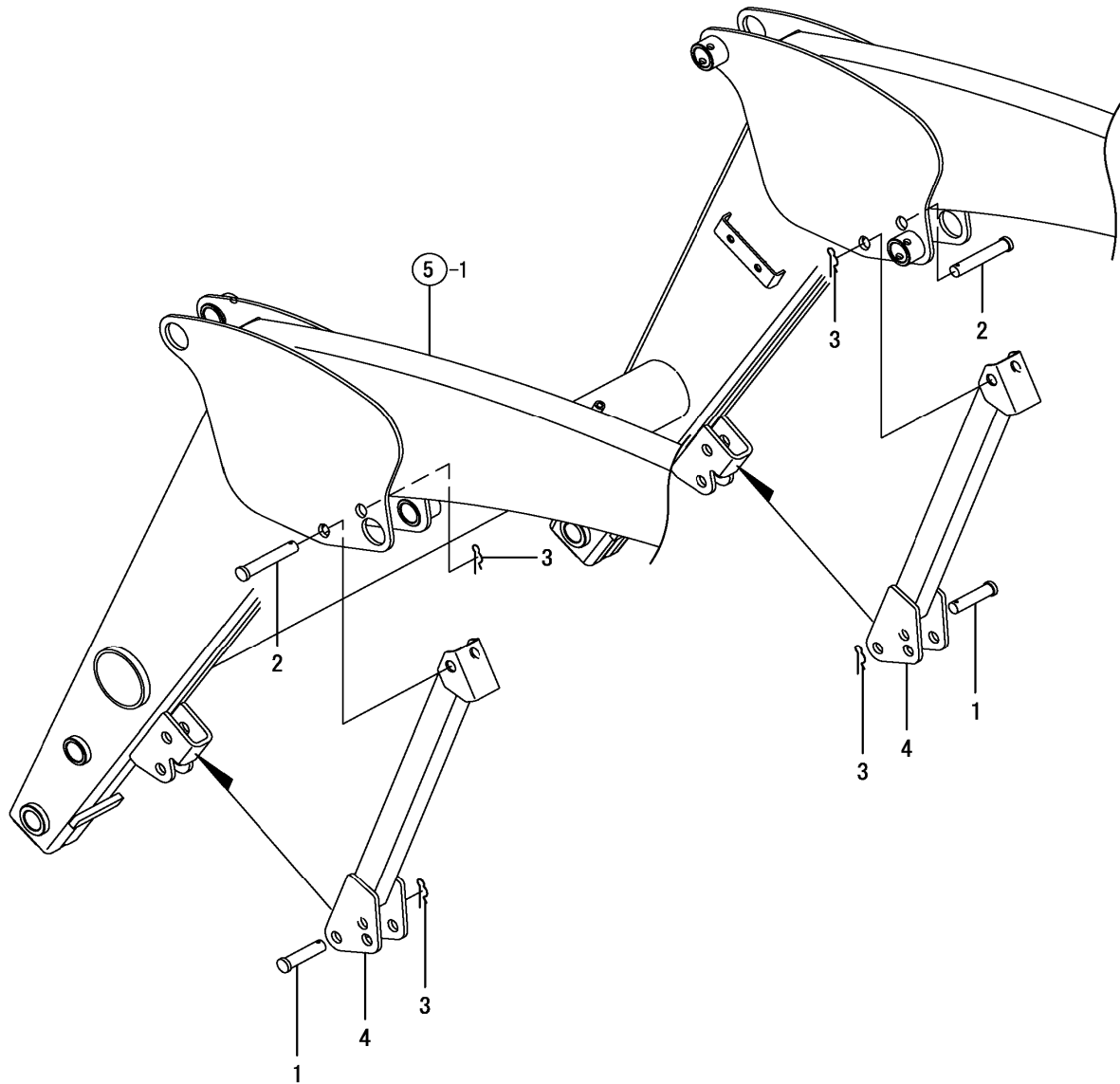
REF NO.	PART NUMBER	DESCRIPTION	QTY
1	CY-1TN322-41100	HP PIPE, TILT CMP	1
2	CY-1TN322-41200	HP PIPE, UP CMP	1
3	CY-1TN322-41300	HP PIPE, DUMP CMP	1
4	CY-1TN322-41400	HP PIPE, DOWN CMP	1
5	CY-1TN322-41550	COVER, CLANP	6
6	CY-1TN322-41510	COVER, PIPE	1
7	CY-1TN322-41710	HP HOSE,INTAKE RED	4
8	CY-194464-45930	PACKING, 8-1	4
9	CY-26106-080302	BOLT, 8 X 30	6
10	CY-29622-250001	BAND, 250	4
11	CY-1TN322-41750	DUST PLUG,M RED	1
12	CY-1TN322-41760	DUST PLUG,M BLUE	1
13	CY-1TN322-41770	DUST PLUG,M YELLOW	1
14	CY-1TN322-41780	DUST PLUG,M GREEN	1
15	CY-1TN322-41790	COVER,HOSE INTAKE	1
16	CY-1TN322-41810	HP HOSE 3/8-500 CMP	2
17	CY-1TN322-41830	HP HOSE 3/8-650 CMP	1
18	CY-1TN322-41850	HP HOSE 3/8-1100 CMP	1
19	CY-1TN322-41870	HP HOSE,R-F 500 CMP	3
20	CY-1TN322-41890	HP HOSE,R-F 650 CMP	1
21	CY-1TN322-41970	FITTING,ORIFICE	1
22	CY-194464-45930	PACKING, 8-1	1
23	CY-1A8160-48820	COUPLER,QUICK 3/8M	4
24	CY-26106-080162	BOLT M 8X 16 PLATED	2

FIG. 10 PROTECTOR



REF NO.	PART NUMBER	DESCRIPTION	QTY
1	N/A	GRILLE GUARD KIT	1
2	CY-1TN322-01630	LABEL, GRILL GAURD	1
3	CY-194990-22160	NUT, M12	6
4	CY-1TN322-51100	GRILLE GUARD CMP	1
5	CY-26116-120352	BOLT, 12 X 35	6

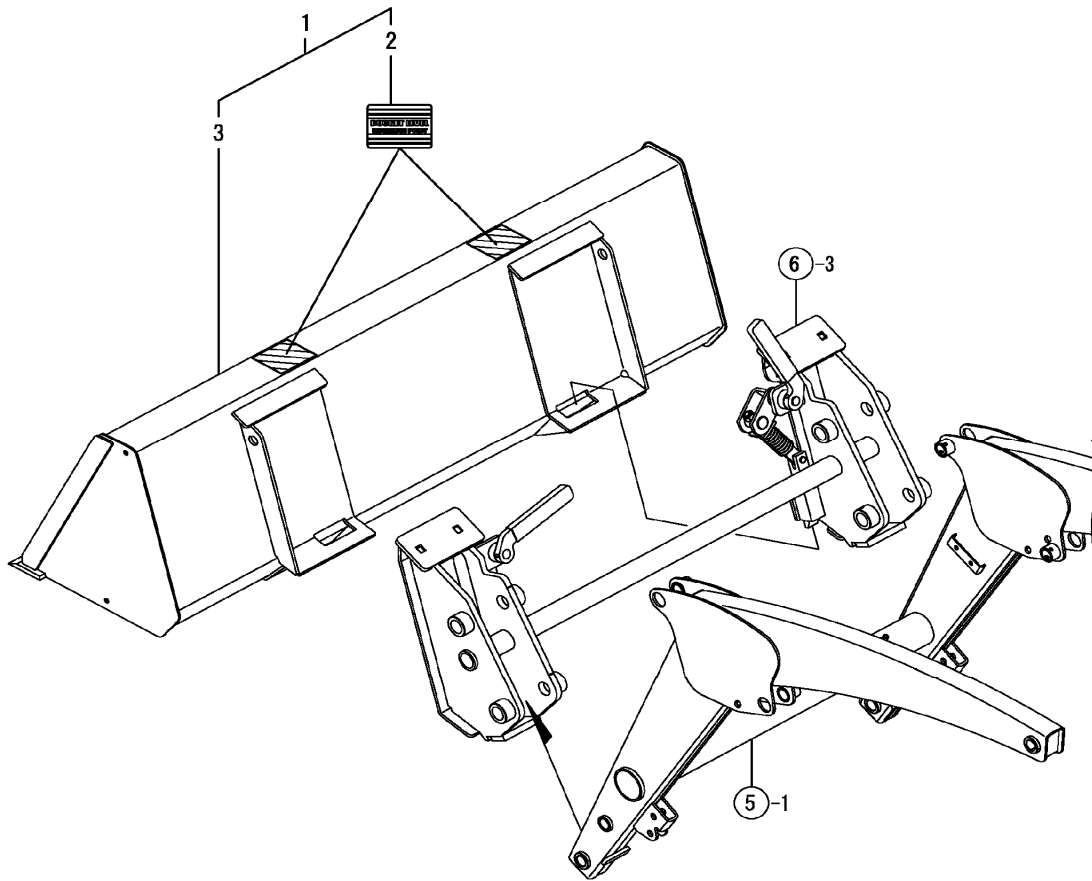
FIG. 11 STAND



REF NO.	PART NUMBER	DESCRIPTION	QTY
1	CY-1TN322-71130	PIN, 16 X 55	2
2	CY-1TN322-71150	PIN, 16 X 80	2
3	CY-1TN322-71170	BETA PIN	4
4	CY-1TN322-71300	STAND CMP	2

Copyright 2008 Cub Cadet Yanmar LLC

FIG. 13 QUICK ATTACH BUCKET



REF NO.	PART NUMBER	DESCRIPTION	QTY
1	CY-1TN322-81300	BUCKET KIT, QUICK	1
2	CY-1TN322-01610	LABEL, BUCKET	2
3	CY-1TN322-81310	BUCKET ASSY, QUICK	1