

R75591 (Juillet 81)  
Groupe Fonctionnel: 2104  
Produits affectés: Tracteurs  
850 (09001- ) et  
950 (12001- )

R75591 (July 81)  
Functional Group: 2104  
Products Affected: 850 (09001- )  
and 950 (12001- ) Tractors

R75591

INSTRUCTIONS FOR INSTALLATION OF SELECTIVE CONTROL VALVE  
ON TRACTORS NOT EQUIPPED WITH POWER STEERING

INSTRUCTIONS POUR L'INSTALLATION DE LA VALVE DE COMMANDE SELECTIVE  
SUR LES TRACTEURS QUI NE SONT PAS EQUIPES D'UNE DIRECTION ASSISTEE

This Instruction is divided into six subsections:

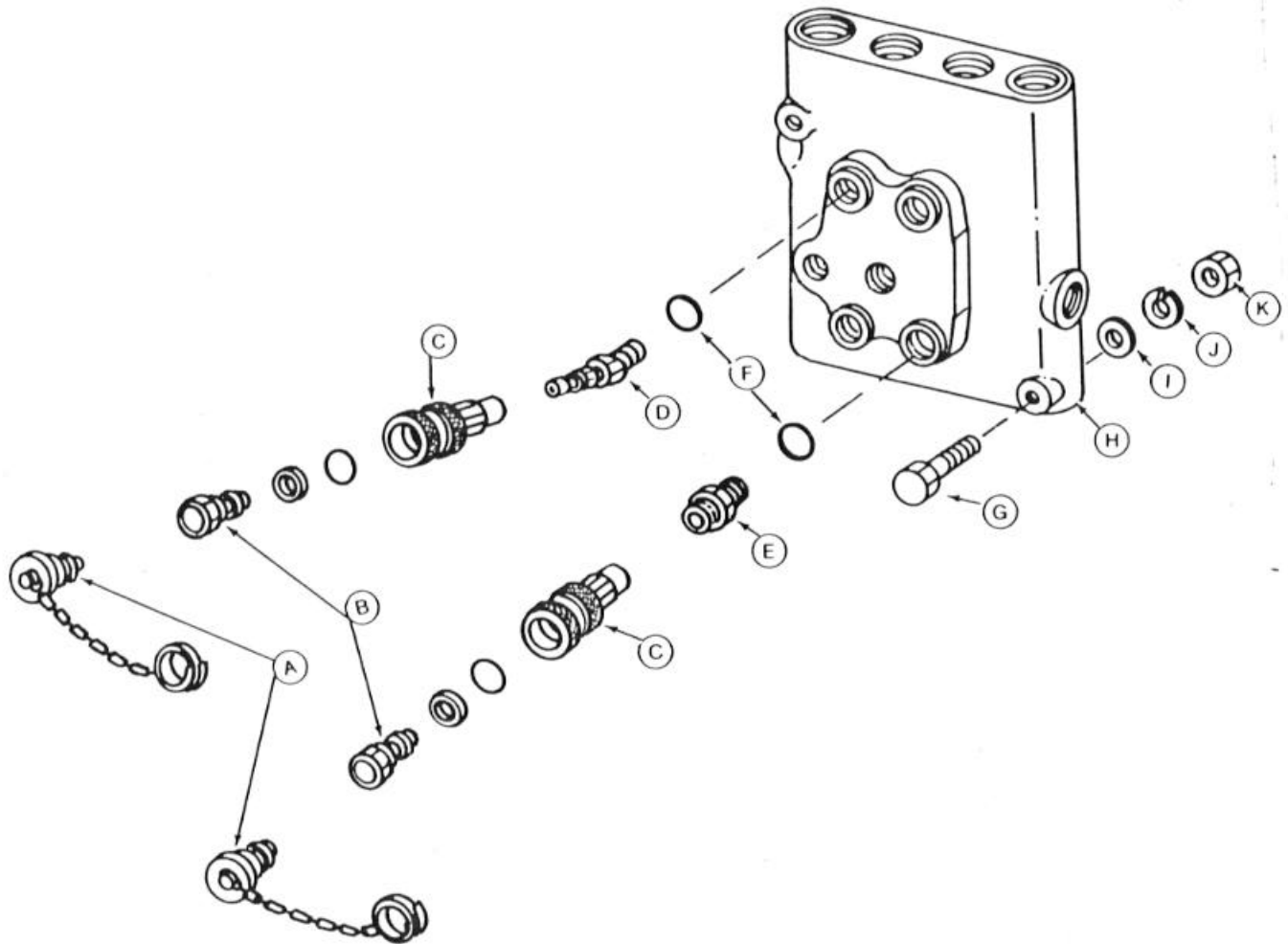
- A. Parts Diagram and Parts List
- B. Subassemble Selective Control Valve
- C. Subassemble SCV Bracket
- D. Adjust the Selective Control Valve
- E. Install Transmission Case and Rockshaft Cover Fitting
- F. Install Valve and Hydraulic Lines

Cette instruction se divise en sept parties:

- A. Schémas des pièces et liste des pièces détachées
- B. Pièces enlevées (si le tracteur était précédemment équipé d'une direction assistée)
- C. Montage partiel de la valve de commande sélective (VCS)
- D. Montage partiel du support de la valve de commande sélective
- E. Installation des raccords sur le carter de la boîte de vitesse et sur le distributeur hydraulique
- F. Installation de la valve et des conduites hydrauliques

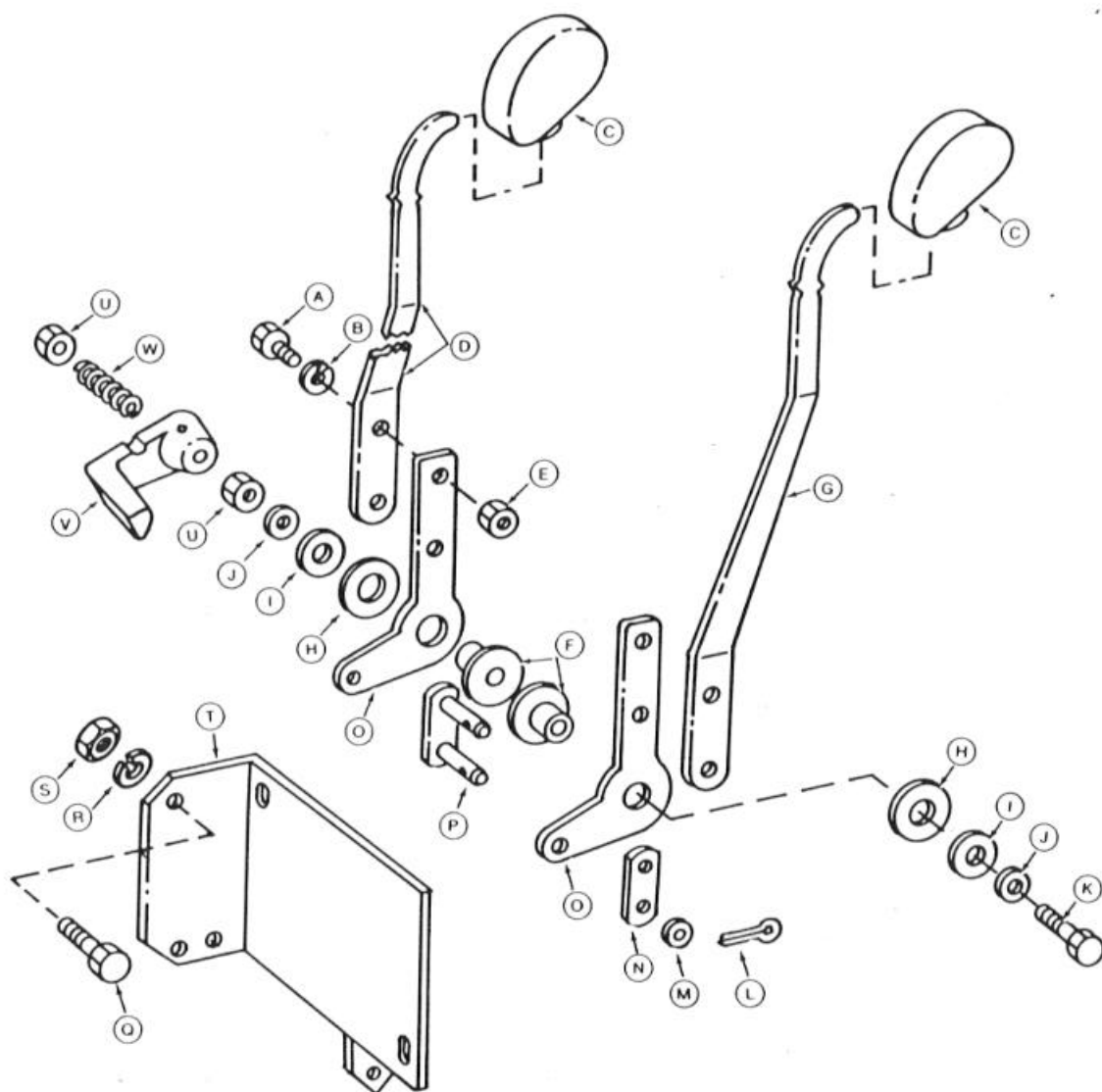
JOHN DEERE TRACTOR WORKS

A. Parts Diagram and Parts List:



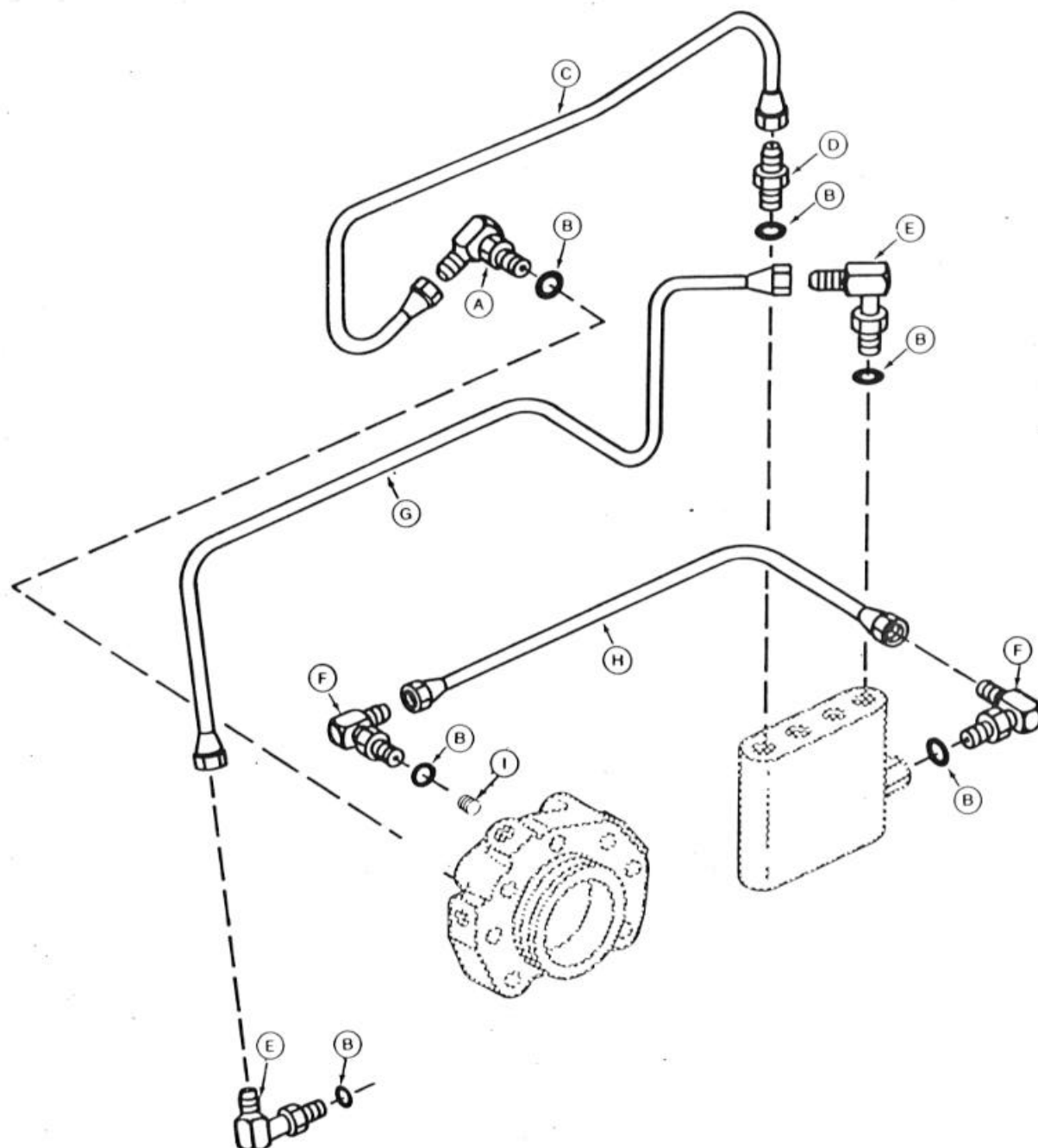
- A - AM31275 Dust Plug (4 used)
- B - AM37983 Plug Coupler (4 used)
- C - AM37982 Receptacle (4 used)
- D - AR92069 Connector (2 used)
- E - T42285 Adapter (2 used)
- F - R26448 O-Ring (4 used)
- G - 19H1738 Cap Screw, 1/4 x 2.0" (2 used)
- H - AR92178 Selective Control Valve
- I - 24H1287 Washer 21/64 x 5/8 x .048" (2 used)
- J - 12H302 Lock Washer, 1/4" (2 used)
- K - 14H786 Nut, 1/4" (2 used)

SCV Valve and Couplers



- |  |  |
|--|--|
| A - 19H2127 Cap Screw, 5/16" x 7/16"<br>(4 used)         | L - 11H230 Cotter Pin, 1/16" x 3/8"<br>(4 used)      |
| B - 12H303 Lock Washer, 5/16" (4 used)                   | M - 24H1283 Washer, 7/32" x 1/2" x .048"<br>(4 used) |
| C - R52691 Knob (2 used)                                 | N - R67660 Link (2 used)                             |
| D - R70355 Outer Lever                                   | O - R67658 Bellcrank (2 used)                        |
| E - 14H785 Nut, 5/16" (4 used)                           | P - AR88091 Link with Pins (2 used)                  |
| F - M82224 Flange Bearing (2 used)                       | Q - 19H1905 Cap Screw, 5/16" x 1" (2 used)           |
| G - R70354 Inner Lever                                   | R - 12H302 Lock Washer, 5/16" (2 used)               |
| H - 24H1395 Washer, 24/32" x 1-7/16" x<br>.060" (2 used) | S - 14H786 Nut, 5/16" (2 used)                       |
| I - T18786 Spring Washer (2 used)                        | T - AR92370 Bracket                                  |
| J - 24H1341 Washer, 17/32" x 15/16" x<br>.060" (2 used)  | U - K40014 Lock Nut, 1/2" (2 used)                   |
| K - 19H2982 Cap Screw, 1/2" x 4"                         | V - R58511 Arm                                       |
|  | W - F1463R Spring                                    |

SCV Brackets and Levers



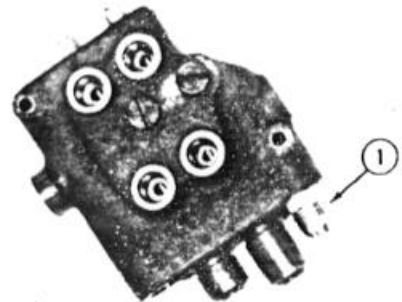
- A - AR27738 Elbow, 90°
- B - R26375 O-Ring (6 used)
- C - AR94597 Oil Line, Pressure
- D - R27237 Connector
- E - AR27699 Elbow, 90° (2 used)
- F - AT32332 Elbow, 90° (2 used)
- G - AR94596 Oil Line, Return
- H - AR94598 Oil Line, Return
- I - 15H275 Pipe Plug

#### Selective Control Valve Fittings

B. Subassembly Selective Control Valve:

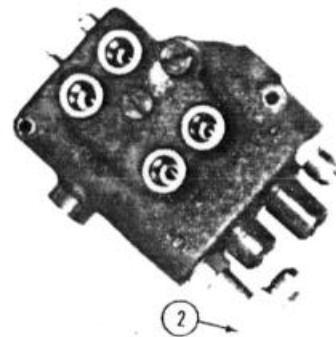
NOTE: Refer to fitting diagrams on Page 27 , to check the appropriate part sizes of the fittings and O-rings.

1. Install R27237 connector and R26375 O-ring in the top of the selective control valve. Tighten connector.



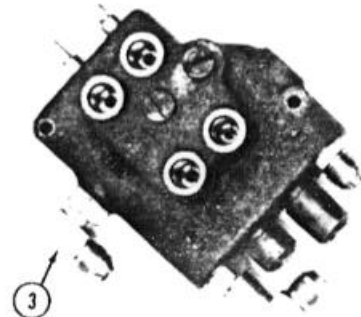
R79267N1

2. Install AR27699 elbow and R26375 O-ring in the top of the selective control valve. Do not tighten elbow.



R79267T1

3. Install AR26763 90° elbow and R26375 O-ring in the side of the selective control valve. Do not tighten elbow.

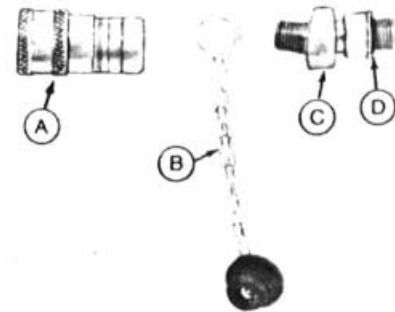


R79267S1

4. Install quik-coupler receptacle (A) and dust plug (B) to the connector (C).

NOTE: Use a joint sealing compound on the quik-coupler connector threads.

A - Receptacle  
B - Dust Plug  
C - Special Connector  
D - O-Ring

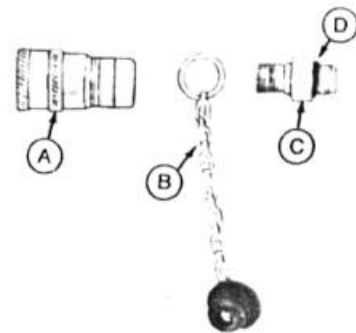


R7920411

5. Install quik-coupler receptacle (A) and dust plug (B) to the special connector (C).

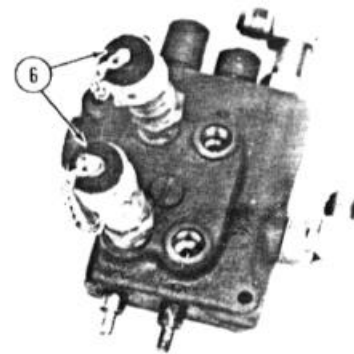
NOTE: Use a joint sealing compound on the quik-coupler special connector threads.

A - Receptacle  
B - Dust Plug  
C - Connector  
D - O-Ring



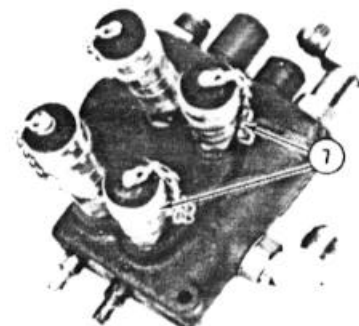
R79204J1

6. Install the SCV special receptacle connectors and R26448 O-rings to the selective control valve.



R79267U1

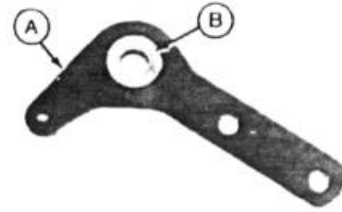
7. Install the SCV receptacle connectors and R26448 O-rings to the selective control valve.



R79267W1

C. Subassembly SCV Bracket:

1. Install bearing (B) to Bellcrank (A).

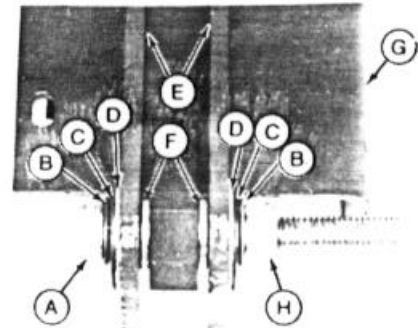


R79204A1

2. Install the bellcrank (E) to the SCV bracket as shown above. Use the following to mount the bellcrank:

- 1 - Cap Screw
- 2 - Spring Washers
- 4 - Washers
- 1 - Lock Nut

- A - Cap Screw, 1/2" x 4"
- B - Washer, 1/2" x 1-1/4" x .075 (2 used)
- C - Spring Washer (2 used)
- D - Washer, 25/32" x 1-7/16" x .070" (2 used)
- E - Bellcranks (2 used)
- F - Flange Bearing (2 used)
- G - Bracket
- H - Lock Nut

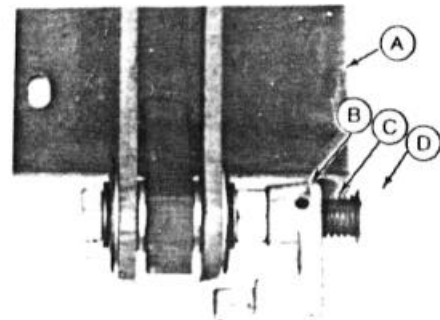


R79267C1

3. Install SCV lockout arm (B) to the SCV bracket cap screw using the following:

- 1 - Spring
- 1 - Lock Nut

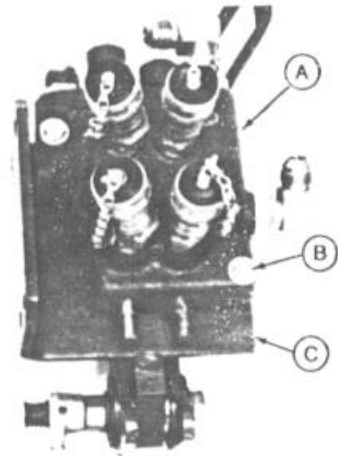
- A - SCV Bracket
- B - Lockout Arm
- C - Spring
- D - Lock Nut



R79267B1

4. Mount the selective control valve (A) to the bracket (C) using the following:

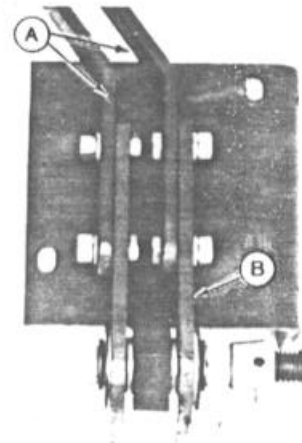
- 2 - Cap Screw, 1/4" x 2"
- 2 - Washers, 21/64" x 5/8" x .048"
- 2 - Lock Washers, 1/4"
- 2 - Nuts, 1/4"



R79267R1

5. Mount the two SCV levers (A) to the bellcrank levers (B) using the following:

- 4 - Cap Screws, 5/16" x 7/8"
- 4 - Lock Washers, 5/16"
- 4 - Nuts, 5/16"

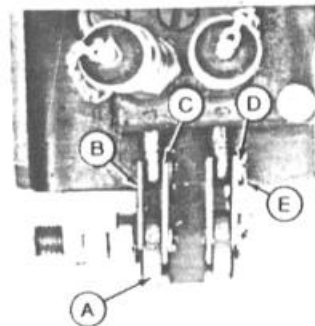


R79267P1

6. Attach the bellcranks (A) to the SCV valves using the following:

- 2 - Links
- 2 - Link Assemblies
- 4 - Washers
- 4 - Cotter Pins

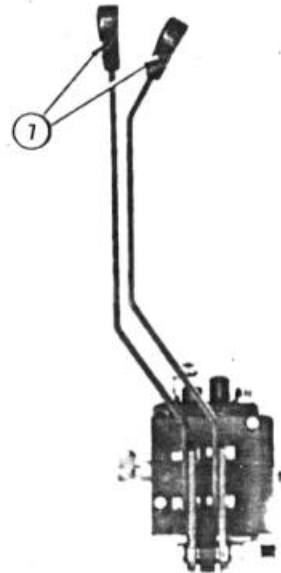
- A - Bellcranks
- B - Link Assembly (2 used)
- C - Link (2 used)
- D - Washer, 7/32 x 1/2" x .048" (4 used)
- E - Cotter Pin, 1/16" x 3/8" (4 used)



R79268H1



7. Install SCV lever knobs to the levers as shown.



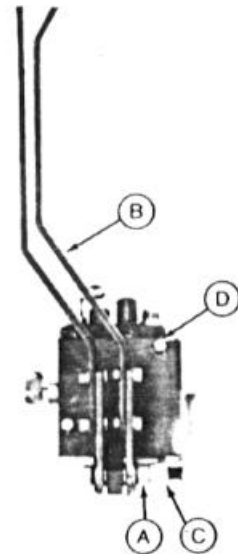
97926801

D. Adjust the Selective Control Valve:

1. Adjust the selective control valve levers per the following:
  - a. Mount the assembled SCV in a vise so the levers and mechanism have free movement.
  - b. With spring washers centered on cap screw, tighten locking nut (A).
  - c. Loosen lock nut (A) until levers are tight, but will return to the neutral position when you release them.

A - Lock Nut  
B - SCV Lever  
C - Float Lockout Arm  
D - SCV Mounting Screw Nut  
(2 used)

2. Adjust the float lockout mechanism per the following:
  - a. Shift lever (B) forward until you feel slight resistance, but not into first detent.

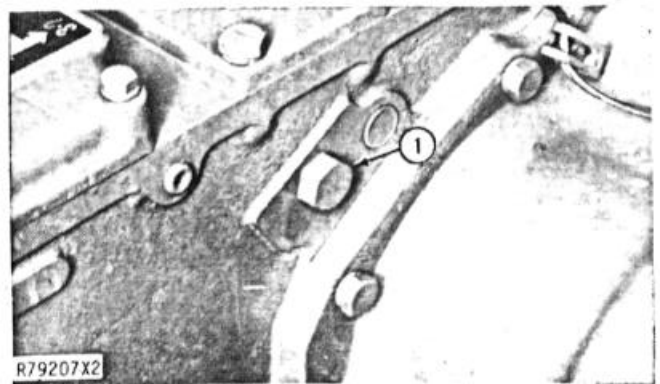


97926802

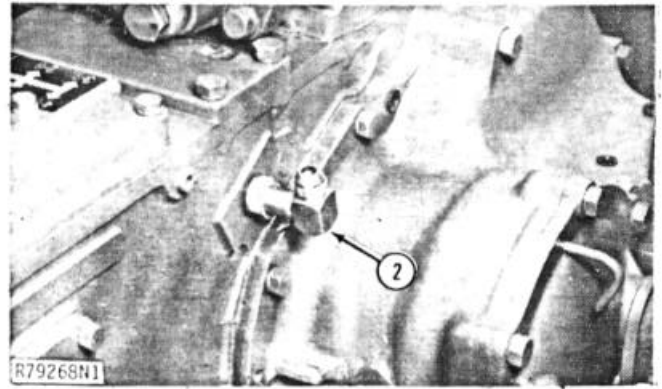
- b. While holding lever in this position, rotate lockout arm (C) until tang on arm engages between bellcrank and lower edge of mounting bracket.
- c. If the tang on arm engages and lever will not move forward out of first detent, no further adjustment is needed.
- d. If tang on arm does not engage or if lever can be moved forward beyond the first detent, proceed with the following.
- e. Loosen nuts (D) just enough to allow valve assembly to slide up and down in slotted holes.
- f. Relocate valve assembly until the location of tang on arm (C) prevents lever (B) from going beyond first detent.
- g. Tighten nuts (D).
- h. Repeat steps 2a and 2b above.

E. Install Transmission Case and Rockshaft Cover Fittings:

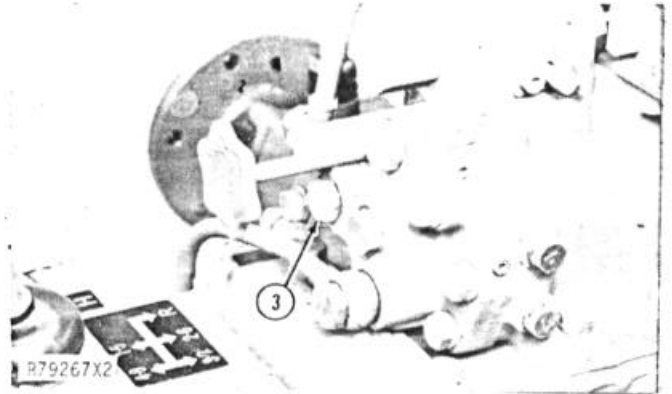
- 1. Remove transmission case plug from the LH side of case.



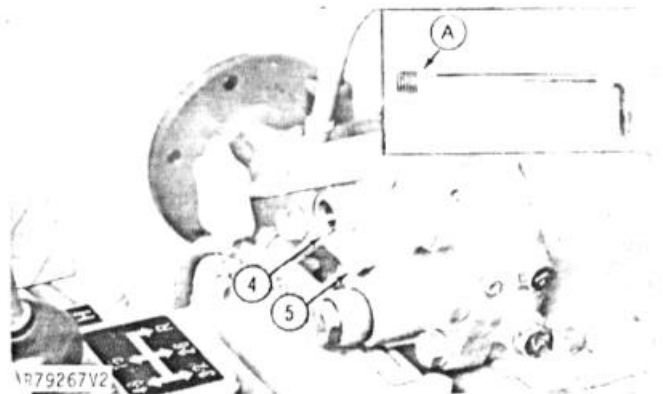
2. Install AR27738 elbow and R26375 O-ring into the transmission case port.



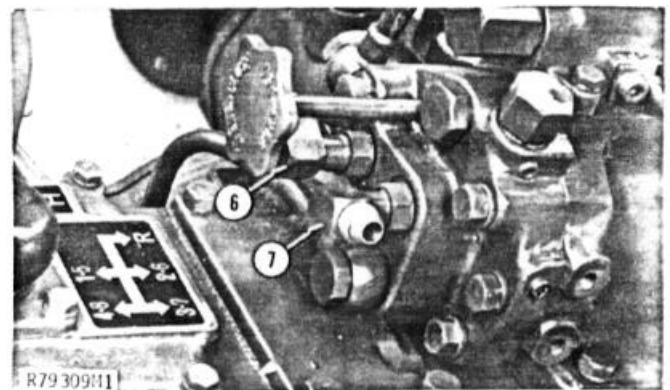
3. Remove hex plug from the RH port in the rockshaft cover.



4. Install the 15H275 pipe plug (A) in the RH port of the rockshaft cover and tighten.
5. Remove the hex plug from the LH port of the rockshaft cover.



6. Install AR26763 90° elbow and R26375 o-ring in the RH port of rockshaft cover. Do not tighten yet.
7. Install AR27738 90° elbow and R26375 o-ring in the LH port of rockshaft cover. Do not tighten yet.

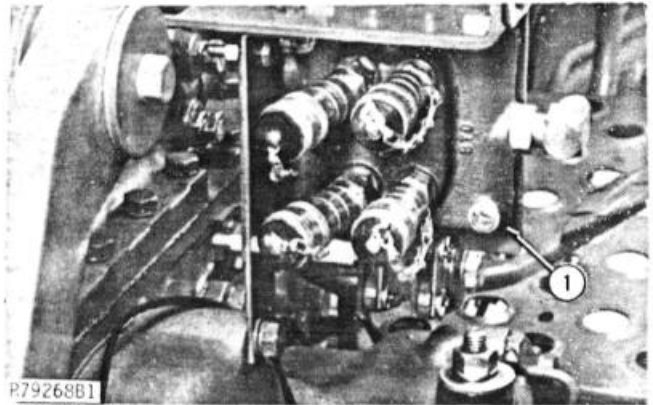


F. Install Valve and Hydraulic Lines:

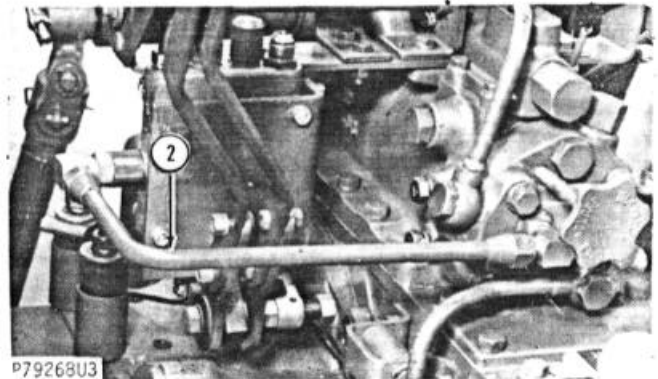
1. Install selective control valve and bracket to rockshaft control lever support using the following:

- 2 - Cap Screws, 5/16" x 1.00"
- 2 - Lock Washer, 5/16"
- 2 - Hex Nuts, 5/16"

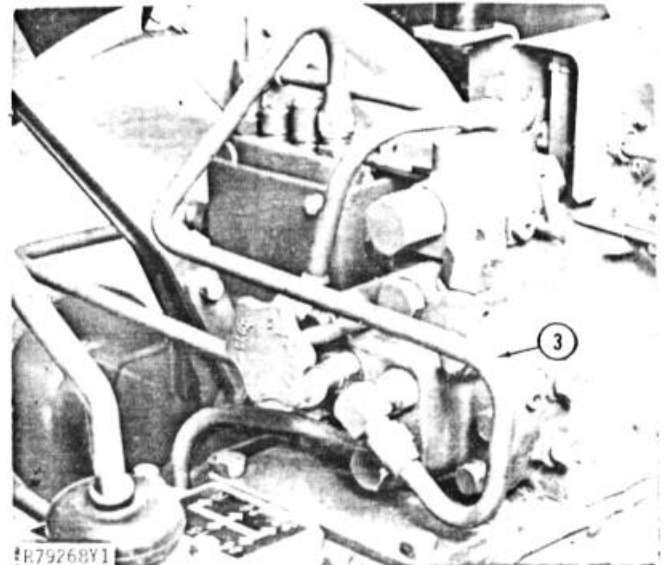
IMPORTANT: Before installing each hydraulic line, be sure plastic cap plugs are removed from ends of lines.



2. Install the AR94596 SCV pressure beyond line from the side of the SCV valve to the RH elbow in the rockshaft cover. Tighten flare nuts.



3. Install AR94597 SCV pressure line from the LH elbow in the rockshaft cover to the connector in the top of the SCV valve. Tighten flare nuts.



4. Install AR94598 SCV return line from the 90° elbow in the top of the SCV valve to the 90° elbow in the transmission case. Tighten flare nuts.

