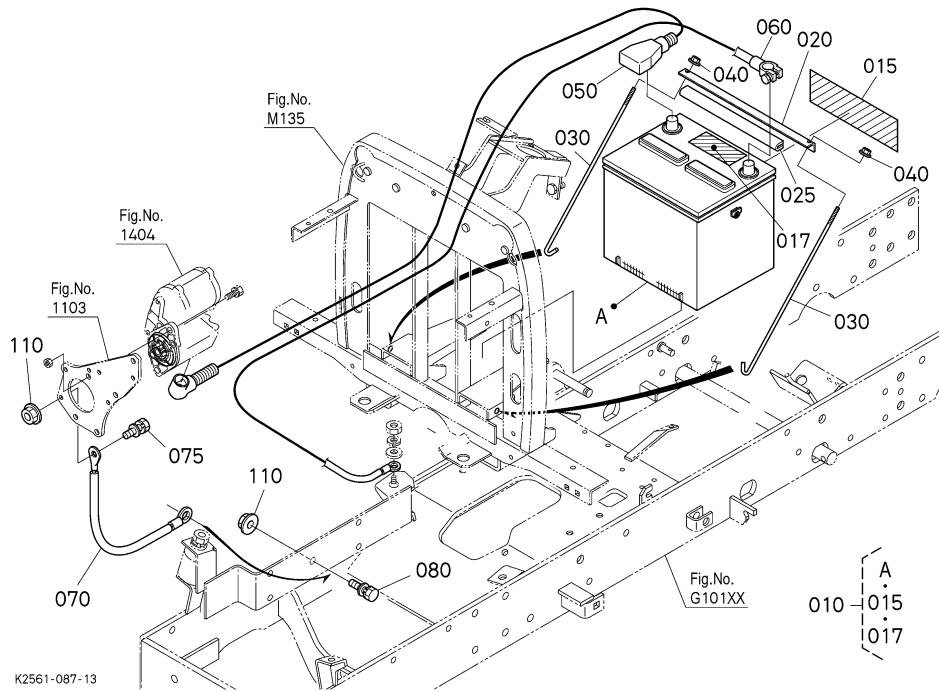
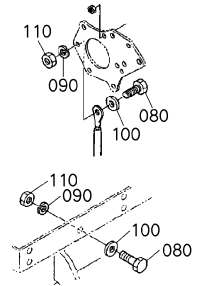


BX2200D -> ELECTRICAL SYSTEM -> A53502 BATTERY

Update Date: 06/13/2012, Printing Date: 11/24/2012



OLD PARTS



K2561-836-11

No	Part Number	Part Name	Qty	IC	S/N	Remarks	lbs
010	K2563-96610	BATTERY, DRY	1			526RMFD	0.0
015	K2563-96620	LABEL, BATTERY	1				0.011
017	K7711-96630	LABEL, BATTERY	1				0.011
020	K2561-61120	HOLDER BATTERY	1				0.3784
025	K2561-61160	TRIM BATTERY	1		ASK DEALER		0.066
030	K2561-61130	ROD BATTERY	2				0.11
040	02751-50060	NUT, FLANGE	2				0.011
050	K2561-61310	CABLE BATTERY(+)	1				0.704
060	K2561-61350	CABLE BATTERY(-)	1				0.5962
070	K1211-61360	CABLE, BATTERY(-)	1				0.11
075	01125-60820	BOLT, W SEMS	1		ASK DEALER		0.033
080	01053-50825	HEX. BOLT	2		ASK DEALER		0.0308
080	01125-50825	BOLT, W SEMS	1	>>	ASK DEALER		0.0396
090	75599-33012	WASHER, SPRING LOCK(5	2		ASK DEALER		0.0044
100	75599-32012	WASHER, PLAIN(5/16)	2		ASK DEALER		0.0044
110	02054-50080	HEX. NUT	2		ASK DEALER		0.011
110	02751-50080	NUT, FLANGE	2	>>	ASK DEALER		0.0132