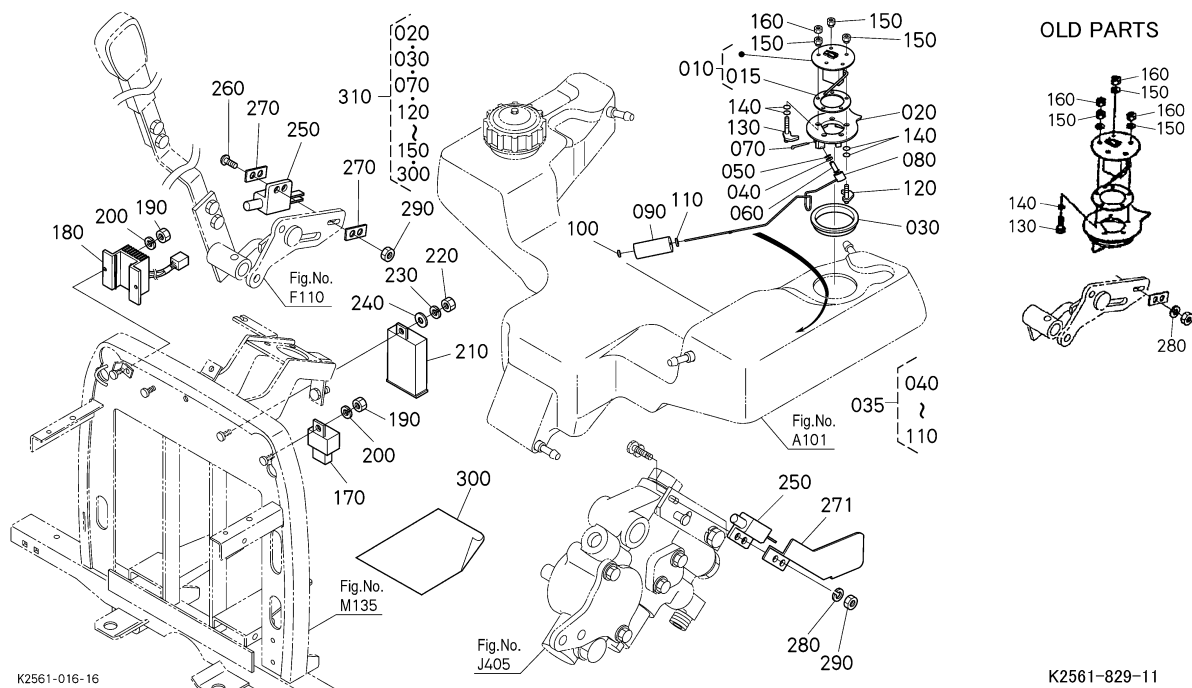


BX2200D -> ELECTRICAL SYSTEM -> B21501 SWITCH/SENSOR

Update Date: 06/13/2012, Printing Date: 11/24/2012



| No | Part Number | Part Name | Qty | IC | S/N | Remarks | lbs |
|-----|-------------|--------------------|-----|----|------------|------------------------------|--------|
| 010 | K2561-61370 | SENSOR FUEL | 1 | | | | 0.264 |
| 015 | 6A100-54790 | GASKET,GAUGE | 1 | | | | 0.022 |
| 020 | K2561-61380 | STAY SENSOR FUEL | 1 | | ASK DEALER | ORDER BY REF.No.310 | 0.11 |
| 020 | K2561-61386 | STAY SENSOR FUEL | 1 | NI | ASK DEALER | | 0.22 |
| 030 | K2561-61390 | BUSH SENSOR FUEL | 1 | | ASK DEALER | ORDER BY REF.No.310 | 0.0308 |
| 030 | K2561-61392 | BUSH SENSOR FUEL | 1 | NI | ASK DEALER | | 0.044 |
| 035 | K2561-96130 | FUEL FLOAT KIT | 1 | | ASK DEALER | ORDER BY REF.No.035 NEW PART | 0.176 |
| 035 | K2561-96132 | FUEL FLOAT KIT | 1 | NI | ASK DEALER | | 0.66 |
| 040 | K2561-61440 | BEARING,BALL | 1 | | | | 0.0066 |
| 050 | 04611-00160 | CIR-CLIP,INTERNAL | 1 | | | | 0.0022 |
| 060 | 05112-50825 | PIN,JOINT | 1 | | | | 0.0242 |
| 060 | K2561-61460 | PIN JOINT | 1 | = | | | 0.0264 |
| 070 | 05511-50218 | PIN,SPLIT | 1 | | | | 0.0022 |
| 080 | K2561-61410 | ARM FUEL FLOAT | 1 | | ASK DEALER | | 0.088 |
| 080 | K2561-61413 | ARM FUEL FLOAT | 1 | >> | ASK DEALER | | 0.088 |
| 090 | K2561-61420 | FLOAT LEVELER FUEL | 1 | | | | 0.0352 |
| 100 | K2561-61430 | WASHER | 1 | | | | 0.0022 |
| 110 | K2561-61450 | WASHER PLAIN | 1 | | | | 0.0022 |
| 120 | 01053-50514 | BOLT | 4 | | ASK DEALER | | 0.011 |
| 120 | K2561-61480 | BOLT CLAMP | 4 | NI | ASK DEALER | | 0.0154 |
| 130 | 01053-50522 | BOLT | 1 | | ASK DEALER | | 0.011 |
| 130 | K2561-61490 | BOLT CLAMP L | 1 | NI | ASK DEALER | | 0.0198 |
| 140 | 04811-00040 | RING | 5 | | ASK DEALER | | 0.0022 |
| 140 | 04811-00050 | O RING | 10 | NI | ASK DEALER | | 0.0022 |
| 140 | 04816-00050 | O RING | 10 | >> | | | 0.0022 |
| 150 | 75599-33008 | WASHER SPRING LOCK | 5 | | ASK DEALER | | 0.0022 |
| 150 | 02552-50050 | NUT,LOCKING | 5 | NI | ASK DEALER | | 0.0286 |
| 160 | 02054-50050 | HEX.NUT | 6 | | ASK DEALER | | 0.0044 |
| 160 | 02054-50050 | HEX.NUT | 1 | | ASK DEALER | | 0.0044 |
| 170 | T0070-31410 | TIMER,KEY STOP | 1 | | | | 0.143 |
| 180 | K2561-62050 | REGULATOR | 1 | | | | 0.55 |
| 190 | 02014-50060 | HEX.NUT | 3 | | | | 0.0044 |
| 200 | 75599-33011 | LOCK WASHER 1/4" | 3 | | | | 0.0044 |
| 210 | 3F240-75430 | UNIT,FLASHER | 1 | | | | 0.132 |
| 220 | 02014-50060 | HEX.NUT | 1 | | | | 0.0044 |
| 230 | 75599-33011 | LOCK WASHER 1/4" | 1 | | | | 0.0044 |
| 240 | 75599-32011 | WASHER,PLAIN(1/4) | 1 | | | | 0.0022 |

| No | Part Number | Part Name | Qty | IC | S/N | Remarks | lbs |
|-----|-------------|----------------------|-----|----|------------|---------|--------|
| 250 | K2561-62250 | SWITCH,SAFETY | 2 | | | | 0.0374 |
| 260 | 03054-50420 | SCREW,PAN HEAD(PHILL | 2 | | ASK DEALER | | 0.0044 |
| 260 | 03024-50420 | SCREW,SEMS(PAN HEAD) | 2 | >> | ASK DEALER | | 0.0044 |
| 270 | K2561-62260 | PLATE,SWITCH | 3 | | ASK DEALER | | 0.0022 |
| 270 | K2561-62260 | PLATE,SWITCH | 2 | | ASK DEALER | | 0.0022 |
| 271 | K2561-62270 | BRACKET SWITCH | 1 | | ASK DEALER | | 0.0506 |
| 280 | 04512-60040 | WASHER,SPRING LOCK | 4 | | ASK DEALER | | 0.0044 |
| 280 | 04512-60040 | WASHER,SPRING LOCK | 2 | | ASK DEALER | | 0.0044 |
| 290 | 02054-50040 | HEX.NUT | 4 | | | | 0.0066 |
| 300 | 99999-99999 | BLANK | 1 | | | | 0.0 |
| 310 | K2561-96140 | KIT FUEL STAY | 1 | | ASK DEALER | OPTION | 0.352 |