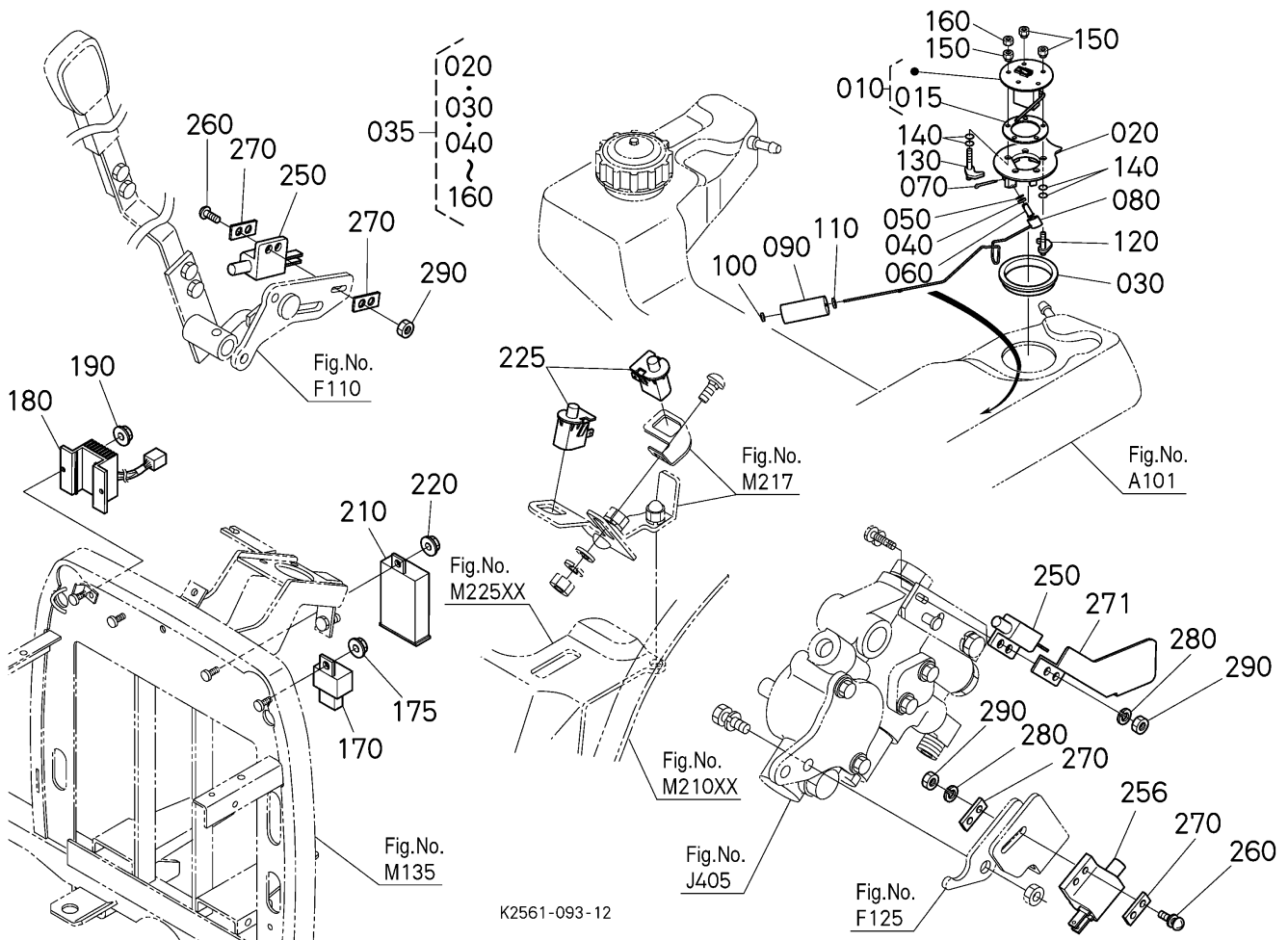


BX2200D -> ELECTRICAL SYSTEM -> B21502 SWITCH/SENSOR

Update Date: 06/13/2012, Printing Date: 11/24/2012



No	Part Number	Part Name	Qty	IC	S/N	Remarks	lbs
010	K2561-61370	SENSOR FUEL	1				0.264
015	6A100-54790	GASKET,GAUGE	1				0.022
020	K2561-61386	STAY SENSOR FUEL	1				0.22
030	K2561-61392	BUSH SENSOR FUEL	1				0.044
035	K2561-96132	FUEL FLOAT KIT	1				0.66
040	K2561-61440	BEARING,BALL	1				0.0066
050	04611-00160	CIR-CLIP,INTERNAL	1				0.0022
060	K2561-61460	PIN JOINT	1				0.0264
070	05511-50218	PIN,SPLIT	1				0.0022
080	K2561-61413	ARM FUEL FLOAT	1				0.088
090	K2561-61420	FLOAT LEVELER FUEL	1				0.0352
100	K2561-61430	WASHER	1				0.0022
110	K2561-61450	WASHER PLAIN	1				0.0022
120	K2561-61480	BOLT CLAMP	4				0.0154
130	K2561-61490	BOLT CLAMP L	1				0.0198
140	04816-00050	O RING	10				0.0022
150	02552-50050	NUT,LOCKING	5				0.0286
160	02054-50050	HEX.NUT	1				0.0044
170	T0070-31410	TIMER,KEY STOP	1				0.143
175	02751-50060	NUT,FLANGE	1				0.011
180	K2561-62050	REGULATOR	1				0.55
190	02751-50060	NUT,FLANGE	2				0.011
210	3F240-75430	UNIT,FLASHER	1				0.132
220	02751-50060	NUT,FLANGE	1				0.011
225	K1122-62280	SWITCH,SEAT	2				0.0242
250	K1122-62250	SWITCH,SAFETY	2				0.044
256	K2561-62250	SWITCH,SAFETY	1				0.0374
260	03024-50420	SCREW,SEMS(PAN HEAD)	4				0.0044

No	Part Number	Part Name	Qty	IC	S/N	Remarks	lbs
270	K2561-62260	PLATE,SWITCH	4				0.0022
271	K2561-62270	BRACKET SWITCH	1				0.0506
280	04512-60040	WASHER,SPRING LOCK	2				0.0044
290	02054-50040	HEX.NUT	6				0.0066