

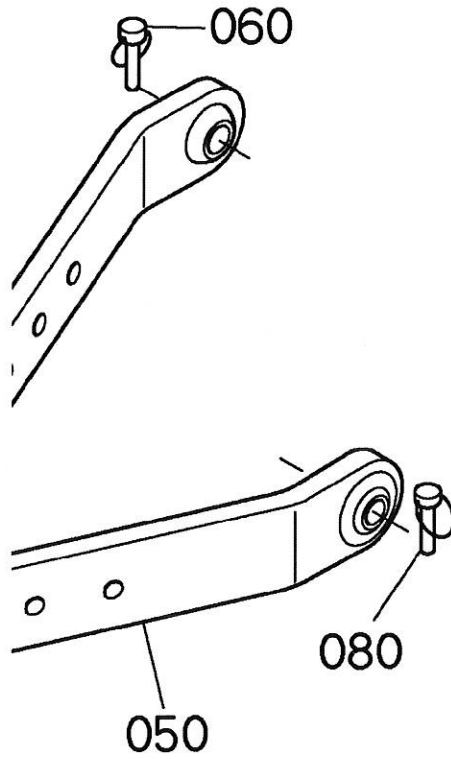
6C360-079-13

No	Part Number	Part Name	Qty	Memo	SB	Info	IC	S/N	Remarks	lbs.	RTN
010	6C040-66010	PIN(LOWER LINK)	1							2.5080	
020	6C040-65120	BOLT	1					<=53603		0.0418	
020	6C040-65122	BOLT	1				>>	>=53604		0.0418	
030	02018-50100	NUT	1							0.0242	
040	04512-50100	WASHER,SPRING LOCK	1							0.0066	
050	6C040-65210	LINK,LOWER,COMP	2					<=52532		11.6160	
050	6C392-65210	LINK,LOWER,COMP	2				>>	>=52533		11.6600	
050	6C392-65213	COMP.LINK,LOWER	2				NI	>=57270		11.6600	
060	34150-37640	PIN,SET	4					<=53129		0.1320	
060	34150-37640	PIN,SET	2					>=53130		0.1320	
070	66204-65350	SPACER	2							0.2640	
080	34150-37640	PIN,SET	2					>=53130		0.1320	

B2920HSD - > B2920HSD - > K11500 LOWER LINK

Update Date: 02/02/2017, Printing Date: 02/08/2017

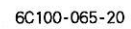
OLD



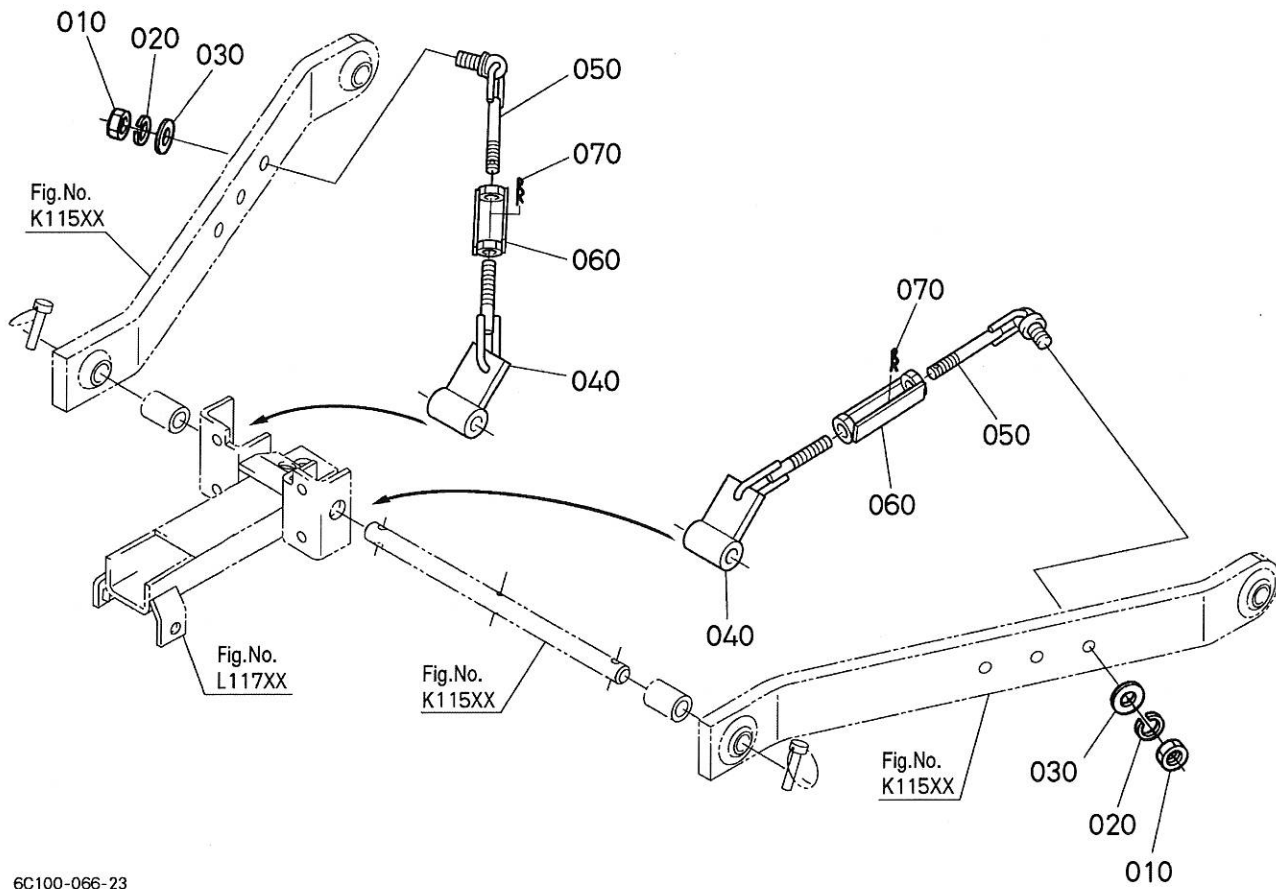
6C300-827-10

Copyright (c) 2016 Kubota Corporation. All rights reserved.

Update Date: 02/02/2017, Printing Date: 02/08/2017



No	Part Number	Part Name	Qty	Memo	SB	Info	IC	S/N	Remarks	lbs.	RTN
010	6C040-65190	BRACKET(TOP LINK LH)	1							1.4080	
020	6C040-65160	BRACKET(TOP LINK RH)	1							1.4300	
030	01123-51230	BOLT,SEMS	4							0.0880	
040	6C070-65400	LINK,TOP ASSY	1					<=54229		4.6640	
040	6C200-65400	ASSY LINK,TOP	1					>=54230		4.6200	
050	03014-50606	SCREW,PAN HEAD(PHILLIPS)	2							0.0594	
060	04512-50060	WASHER,SPRING LOCK	2							0.0022	
070	02152-50200	NUT	1							0.0704	
080	06613-10675	NIPPLE,GREASE	1							0.0066	
090	31150-71360	PIN,CLEVIS	2							0.3652	
100	34150-37640	PIN,SET	2							0.1320	
110	6C060-65450	HOLDER,TOP LINK	1							0.2200	



6C100-066-23

Copyright (c) 2016 Kubota Corporation. All rights reserved.