

REINSTALLING THE BACKHOE



WARNING

To avoid personal injury or death:

- When starting the engine, always sit in the operator's seat.
- When getting off the tractor, make sure that PTO lever is off and range gear shift lever is in neutral. Set the parking brake.
- Keep hands, feet and body from between tractor and backhoe. Never allow any part of body under the machine.



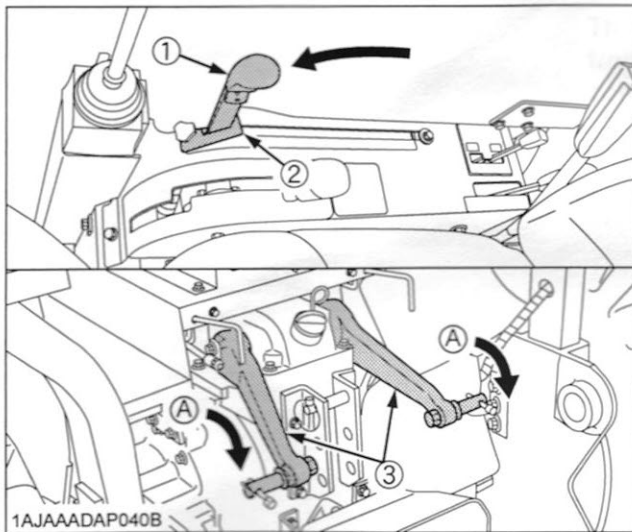
CAUTION

To avoid personal injury:

- Make sure the tractor PTO is disengaged.

IMPORTANT :

- When reinstalling the backhoe, set the engine speed to low idle.
1. Remove the 3-point hitch and / or drawbar. (if equipped)
 2. Lower the position control lever and place the lift arms in lowest position. Lock the position control lever in lowest position with restricting plate.

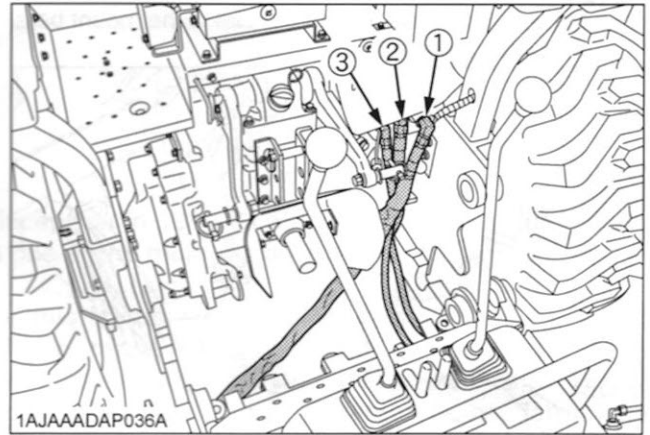


- (1) Position control lever
(2) Restricting plate
(3) Lift arm

(A) Down

3. Make sure the swing lock pin is installed.
4. Slowly back the tractor / loader, centering to the backhoe main frame.
Stop the tractor 10 to 12 inches away from the backhoe.
5. Shut the engine off and set the parking brake.

6. Connect the three hoses of the backhoe to the tractor and align the hoses in the position as shown.



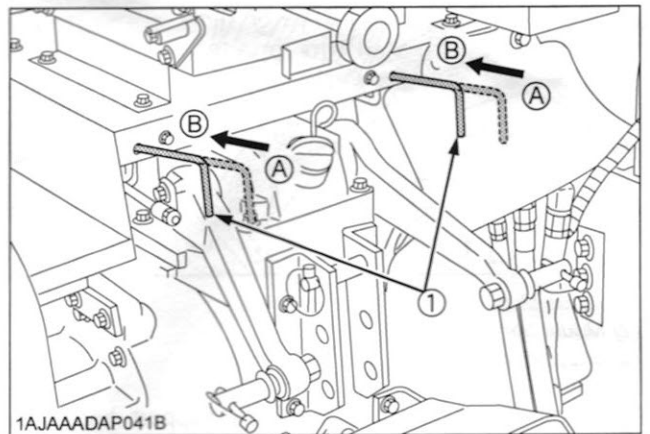
- (1) Inlet hose
(2) Return hose
(3) Swing inlet hose

IMPORTANT :

- Make sure these hoses are firmly connected before starting the engine.

7. Switch the two directional valve levers (LH, RH) position as follows:

- (1) Switch the two directional valve levers to BACKHOE position by pushing the lever fully forward over the feel position.



- (1) Directional valve lever

- (A) Three point hitch position
(B) Backhoe position

8. Restart the engine.



WARNING

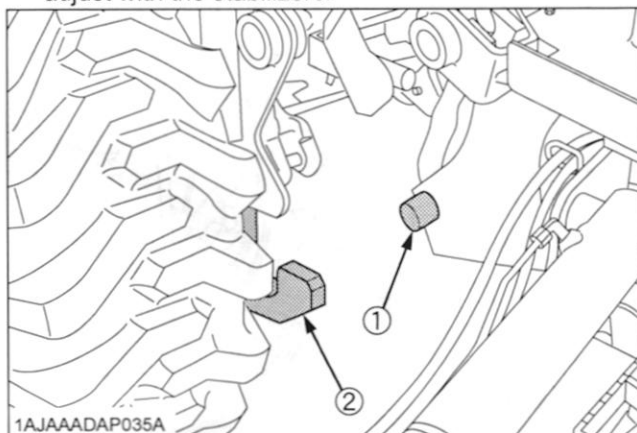
To avoid personal injury or death:

- Do not move the joystick control lever to the swing position.

9. Stand beside the rear tire. Move the boom to fully raising position and raise the backhoe by operating the stabilizers until the mount bar on the backhoe main frame are slightly higher than the tractor main frame support hooks.

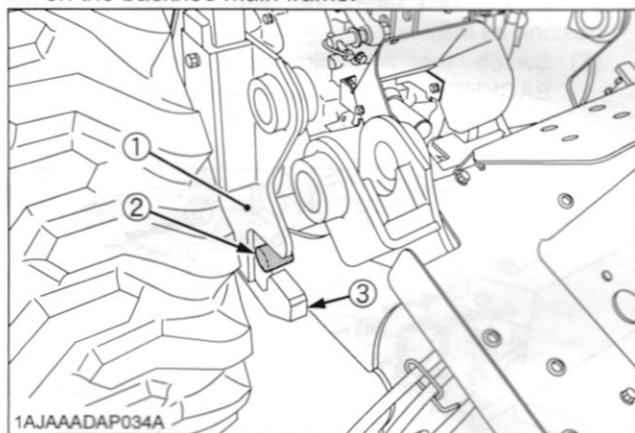
NOTE :

- If the support hooks are not parallel to the mount bars, adjust with the stabilizers.



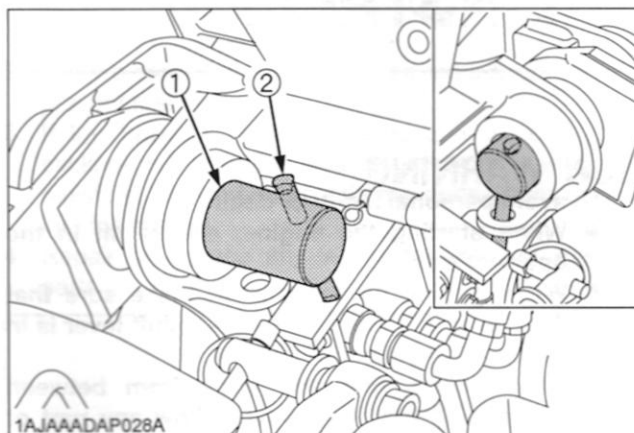
- (1) Mount bar
(2) Support hook

10. Move the tractor backward until the support hooks on the tractor main frame are just beneath the mount bar on the backhoe main frame.



- (1) Guide stop
(2) Mount bar
(3) Support hook

11. Lower the mount bar onto the support hooks by operating the stabilizer and boom control levers.
12. Move the boom slowly to the lowering position, and engage the guide plates of the main frame to the bosses of the tractor main frame. Then raise the rear wheels slightly by operating the boom to the lowering direction.
13. Shut off the engine. Reinstall the mounting pins, and insert the slide bar of the mounting pins to the hole of the main frame.



- (1) Mounting pin
(2) Slide bar

NOTE :

- Move the tractor / loader / backhoe to an open area and cycle all backhoe functions. This will check their operation and flow oil back through the system, filtering it and refilling each circuit. Check the hydraulic oil level before putting the backhoe into full operation. See section "MAINTENANCE" for oil type and correct level.