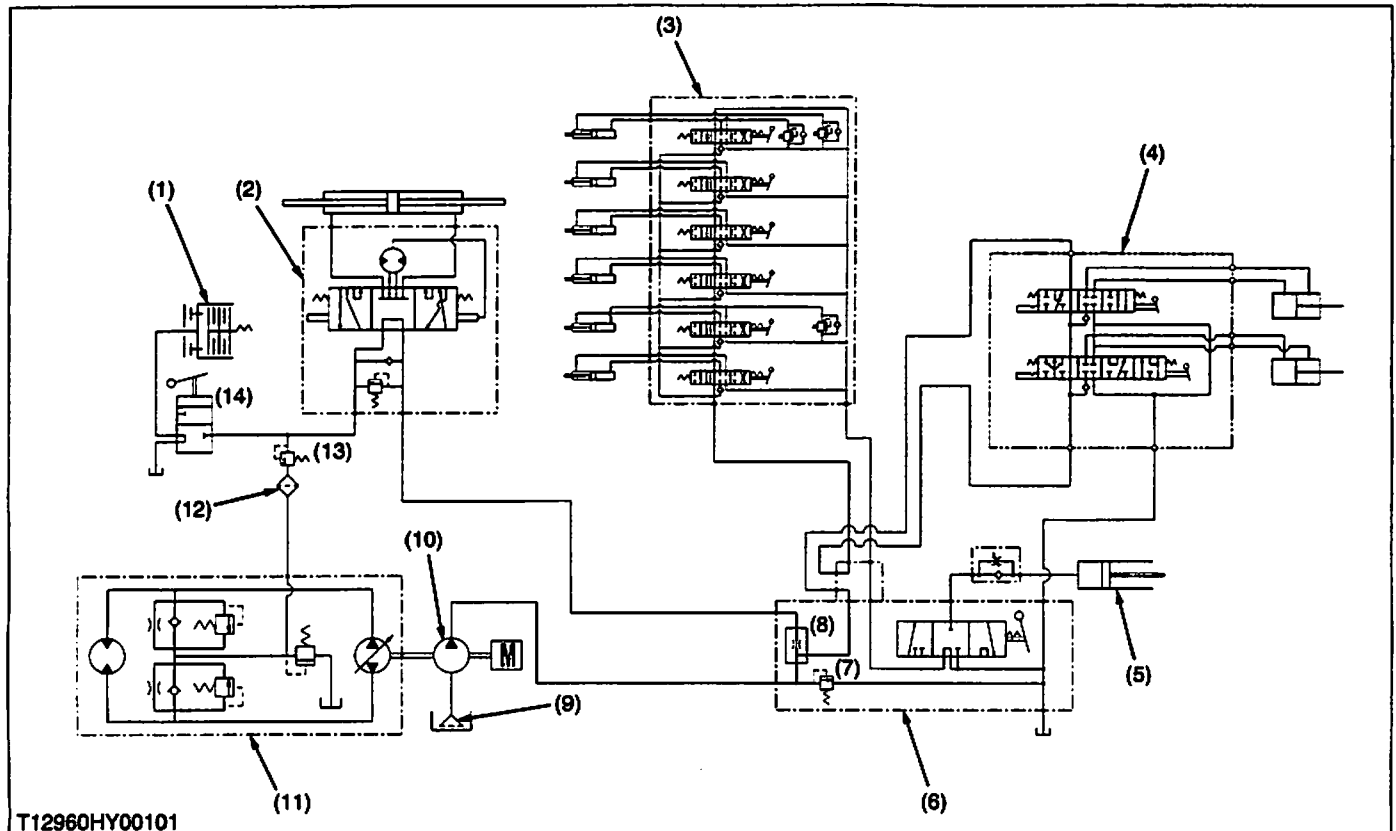


1. HYDRAULIC CIRCUIT



- | | | | |
|------------------------------------|---|-------------------------|-------------------------------|
| (1) PTO Clutch | (4) Front Loader Control Valve Assembly | (7) Relief Valve | (11) Hydrostatic Transmission |
| (2) Power Steering Controller | (5) Hydraulic Cylinder | (8) Flow Priority Valve | (12) Oil Filter |
| (3) Backhoe Control Valve Assembly | (6) Hydraulic Control Valve Assembly | (9) Oil Strainer | (13) PTO Relief Valve |
| | | (10) Hydraulic Pump | (14) PTO Clutch Valve |

The hydraulic system of this tractor is composed of a hydraulic pump, hydraulic block type outlet, control valve, hydraulic cylinder and other components.

This system has the following functions.

1. Oil is supplied by hydraulic pump which is driven by pump drive shaft in the transmission case. As the pump drive shaft is connected to the propeller shaft, hydraulic pump starts running when engine is started.
2. The hydraulic pump forces out the oil to control valve for 3 point hitch system, power steering controller, PTO clutch valve and hydrostatic transmission after dividing oil flow by flow priority valve.
3. Hydraulic power take off from the hydraulic block type outlet to operate the implements such as a front loader and etc.