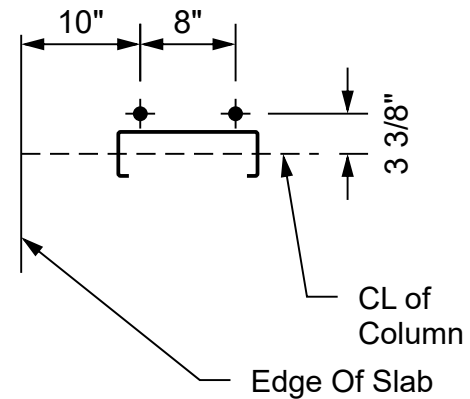
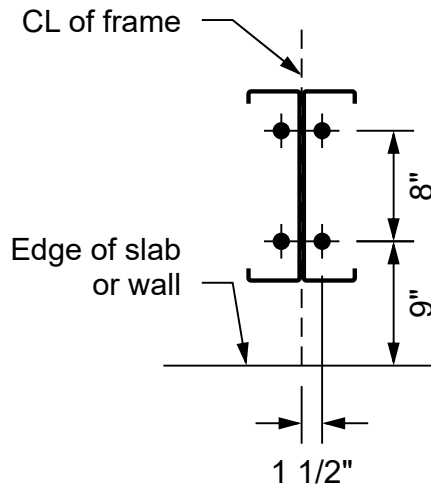
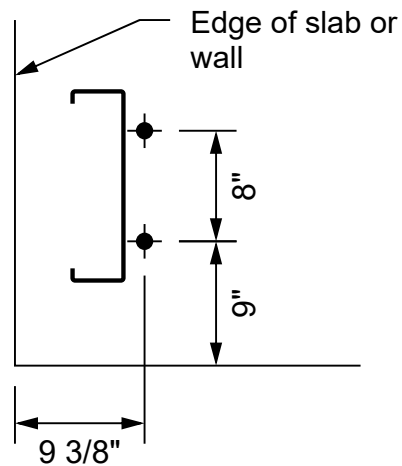


This illustration is for reference only, and is to be used to supplement the engineering drawings. If any discrepancies occur, the engineering plans will always take precedence.

Building Layout Plan





A Corner Column

B Sidewall Column

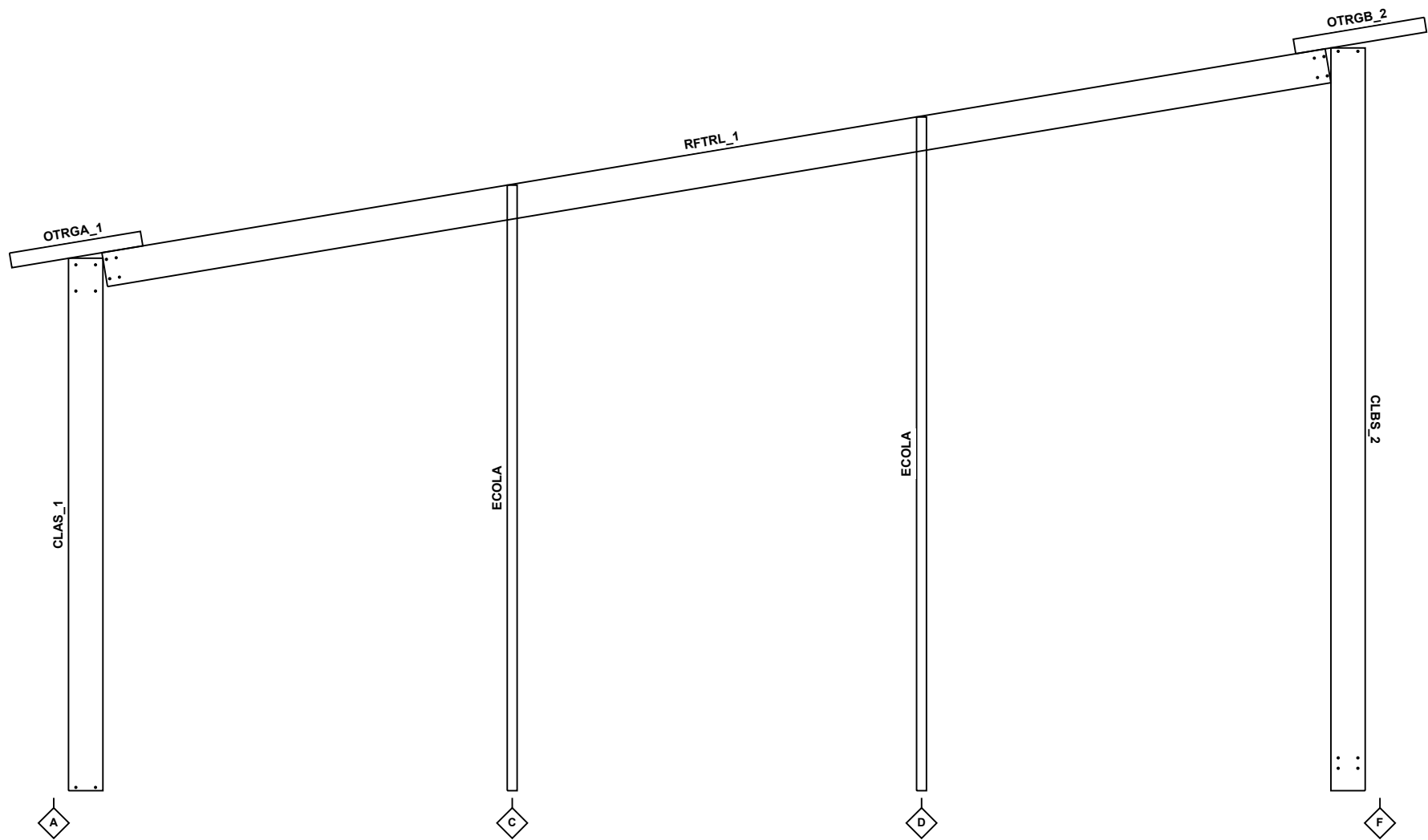
C Endwall Column

All holes drilled for concrete anchors must be drilled with a specific drill bit, as noted on the engineering plans.

This illustration is for reference only, and is to be used to supplement the engineering drawings. If any discrepancies occur, the engineering plans will always take precedence.

Concrete Anchor Details

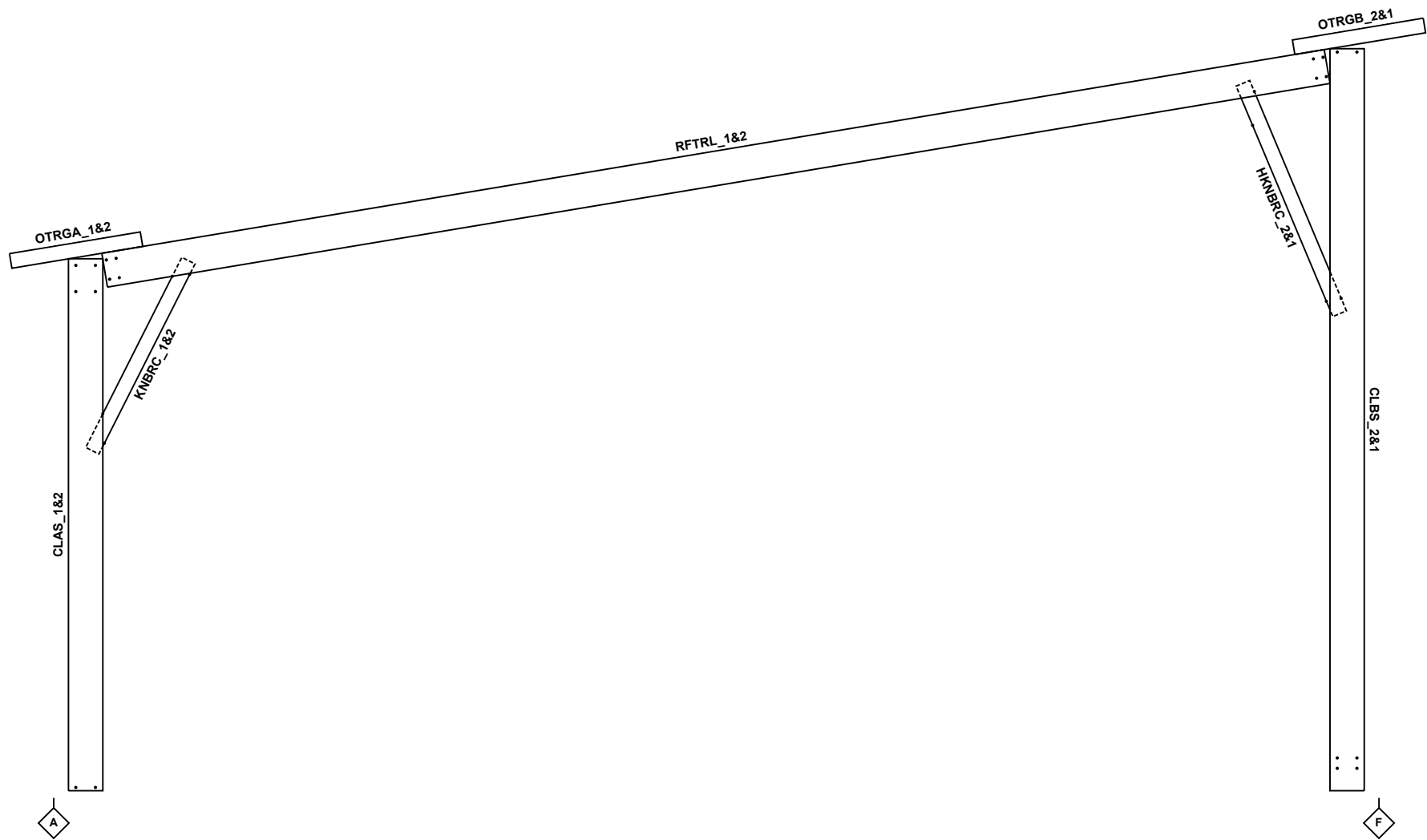




This illustration is for reference only, and is to be used to supplement the engineering drawings. If any discrepancies occur, the engineering plans will always take precedence.

Portal Section, Frame Line 1

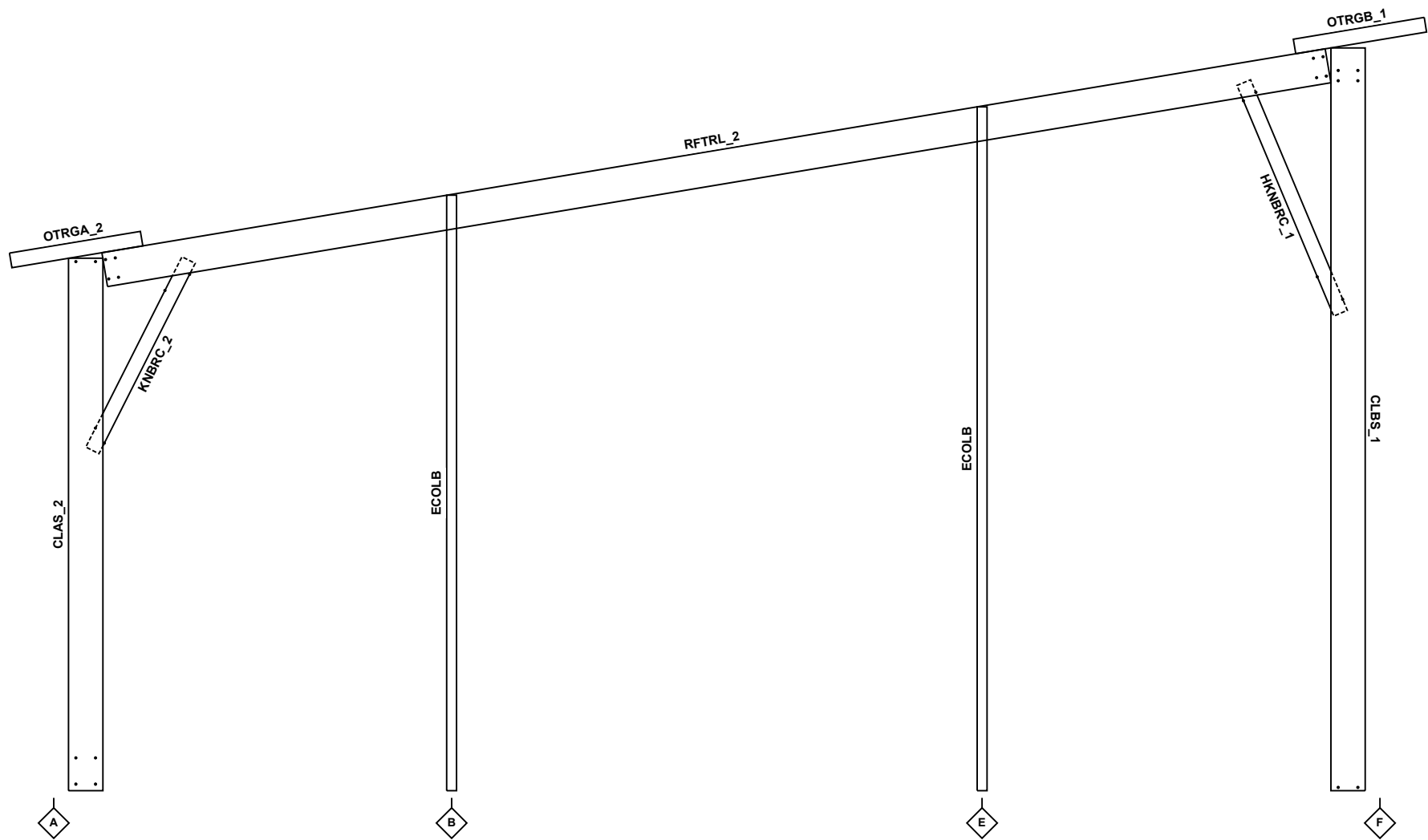




This illustration is for reference only, and is to be used to supplement the engineering drawings. If any discrepancies occur, the engineering plans will always take precedence.

Portal Section, Frame Lines 2, 3, 4, 5, 6, and 7

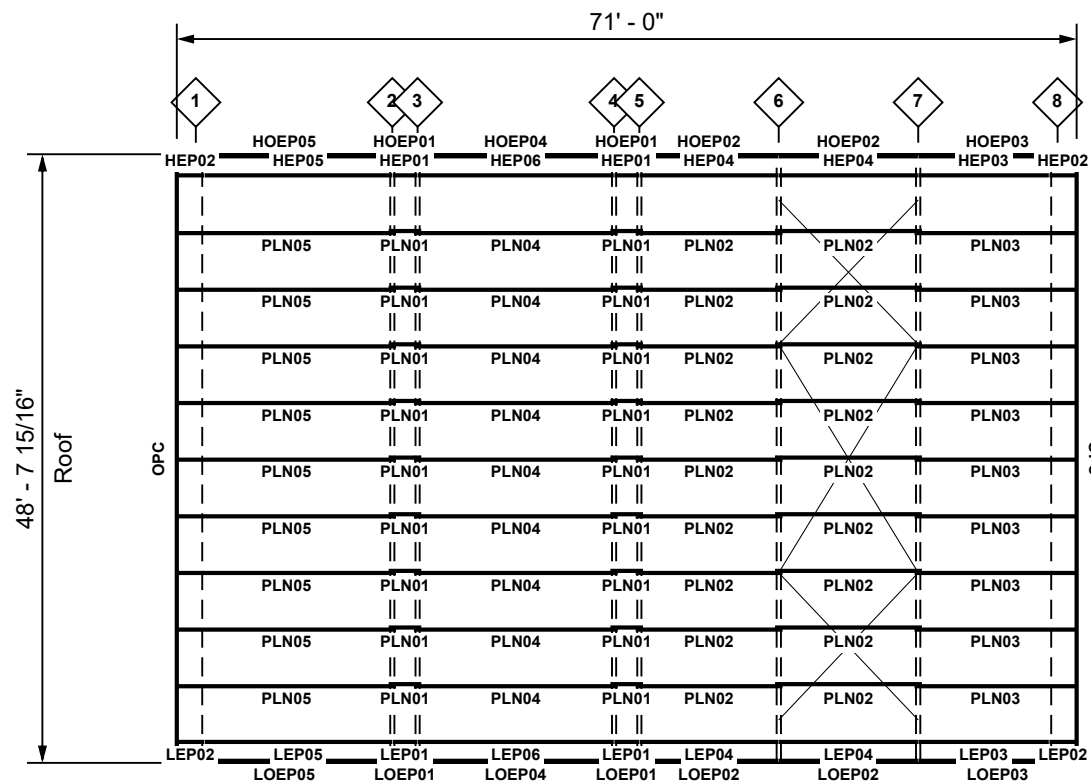




This illustration is for reference only, and is to be used to supplement the engineering drawings. If any discrepancies occur, the engineering plans will always take precedence.

Portal Section, Frame Line 8





Roof Sheeting:
R-Panel 26G
Chocolate Brown

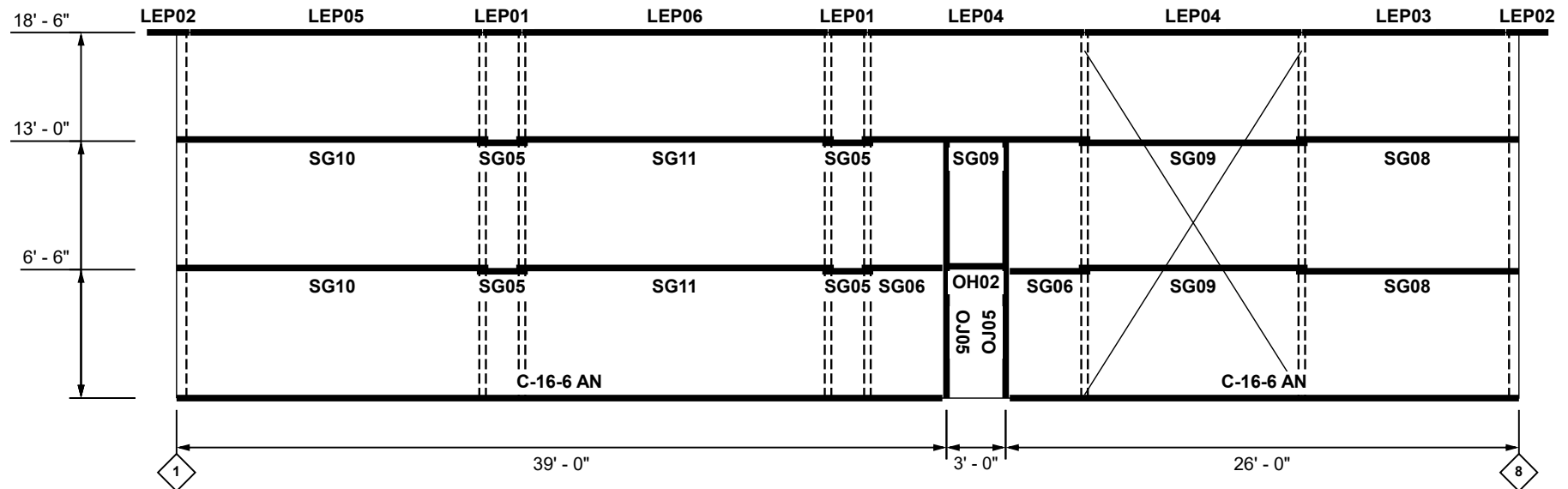
Member Table		
Piece Mark	Product Code	Length
HEP01	C-14-14 E	1' - 11 1/2"
HEP02	C-14-14 E	2' - 1 3/4"
HEP03	C-14-14 E	10' - 3 1/2"
HEP04	C-14-14 E	10' - 11 1/2"
HEP05	C-14-14 E	14' - 9 1/2"
HEP06	C-14-14 E	15' - 5 1/2"
HOEP01	C-14-14 E	1' - 11 1/2"
HOEP02	C-14-14 E	10' - 11 1/2"
HOEP03	C-14-14 E	12' - 5 3/4"
HOEP04	C-14-14 E	15' - 5 1/2"
HOEP05	C-14-14 E	16' - 11 3/4"
LEP01	C-14-14 E	1' - 11 1/2"
LEP02	C-14-14 E	2' - 1 3/4"
LEP03	C-14-14 E	10' - 3 1/2"
LEP04	C-14-14 E	10' - 11 1/2"
LEP05	C-14-14 E	14' - 9 1/2"
LEP06	C-14-14 E	15' - 5 1/2"
LOEP01	C-14-14 E	1' - 11 1/2"
LOEP02	C-14-14 E	10' - 11 1/2"
LOEP03	C-14-14 E	12' - 5 3/4"
LOEP04	C-14-14 E	15' - 5 1/2"
LOEP05	C-14-14 E	16' - 11 3/4"
PLN01	C-16-12 Z	2' - 7"
PLN02	C-16-12 Z	11' - 7"
PLN03	C-16-12 Z	12' - 9 1/2"
PLN04	C-16-12 Z	16' - 1"
PLN05	C-16-12 Z	17' - 3 1/2"

This illustration is for reference only, and is to be used to supplement the engineering drawings. If any discrepancies occur, the engineering plans will always take precedence.

Roof Framing Plan



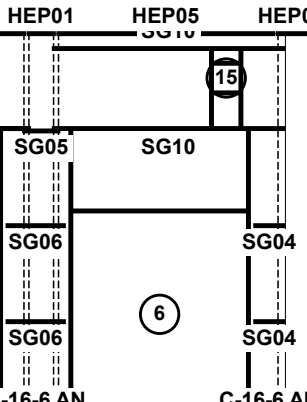
Member Table		
Piece Mark	Product Code	Length
LEP01	C-14-14 E	1' - 11 1/2"
LEP02	C-14-14 E	2' - 1 3/4"
LEP03	C-14-14 E	10' - 3 1/2"
LEP04	C-14-14 E	10' - 11 1/2"
LEP05	C-14-14 E	14' - 9 1/2"
LEP06	C-14-14 E	15' - 5 1/2"
OH02	C-16-12 C	3' - 0"
OJ05	C-16-12 C	13' - 0"
SG05	C-16-12 Z	2' - 7"
SG06	C-16-12 Z	4' - 1"
SG08	C-16-12 Z	11' - 3 1/2"
SG09	C-16-12 Z	11' - 7"
SG10	C-16-12 Z	15' - 9 1/2"
SG11	C-16-12 Z	16' - 1"
--	C-16-6 AN	Stock Length

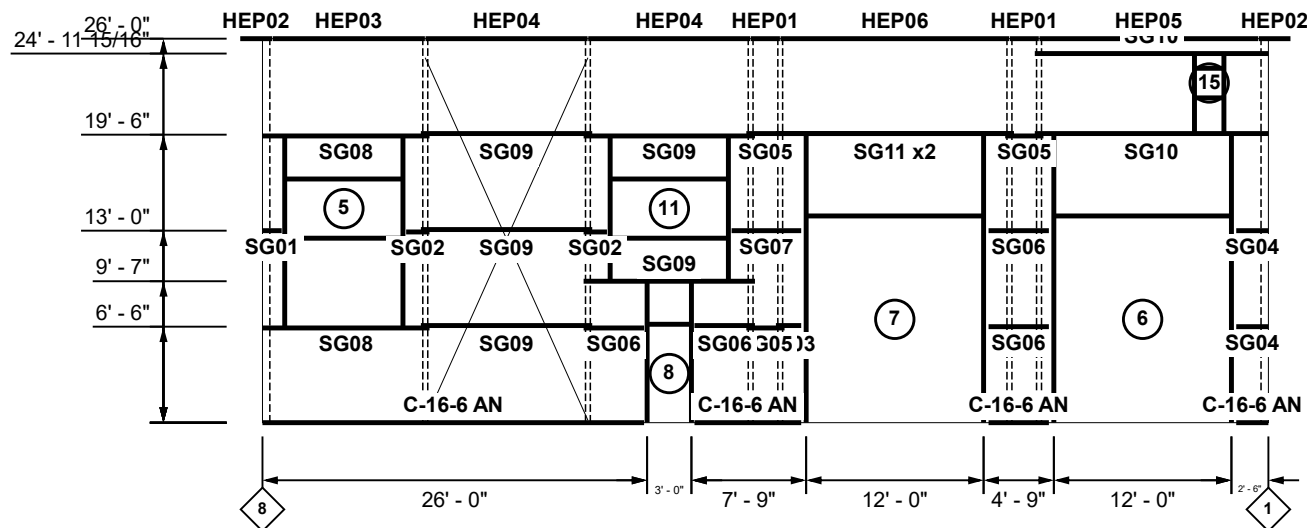


This illustration is for reference only, and is to be used to supplement the engineering drawings. If any discrepancies occur, the engineering plans will always take precedence.

Sidewall A Girt Layout, Frame Line A



Opening Table			Member Table		
Num	Jambs	Header/Sill	Piece Mark	Product Code	Length
5	OJ05	OH03	HEP01	C-14-14 E	1' - 11 1/2"
6	OJ01	OH04	HEP02	C-14-14 E	2' - 1 3/4"
7	OJ01	OH04	HEP03	C-14-14 E	10' - 3 1/2"
8	OJ03	OH02	HEP04	C-14-14 E	10' - 11 1/2"
11	OJ04	OH03	HEP05	C-14-14 E	14' - 9 1/2"
15	OJ02	OH01	HEP06	C-14-14 E	15' - 5 1/2"
			OH01	C-16-12 C	2' - 0"
			OH02	C-16-12 C	3' - 0"
			OH03	C-16-12 C	8' - 0"
			OH04	C-16-12 C	12' - 0"
			OJ01	C-14-14 C	19' - 6"
			OJ02	C-16-12 C	5' - 5 15/16"
			OJ03	C-16-12 C	9' - 7"
			OJ04	C-16-12 C	9' - 11"
			OJ05	C-16-12 C	13' - 0"
			SG01	C-16-12 Z	1' - 3 1/2"
			SG02	C-16-12 Z	1' - 7"
			SG03	C-16-12 Z	1' - 8 1/2"
			SG04	C-16-12 Z	2' - 2"
			SG05	C-16-12 Z	2' - 7"
			SG06	C-16-12 Z	4' - 1"
			SG07	C-16-12 Z	4' - 8 1/2"
			SG08	C-16-12 Z	11' - 3 1/2"
			SG09	C-16-12 Z	11' - 7"
			SG10	C-16-12 Z	15' - 9 1/2"
			SG11	C-16-12 Z	16' - 1"
			--	C-16-6 AN	Stock Length

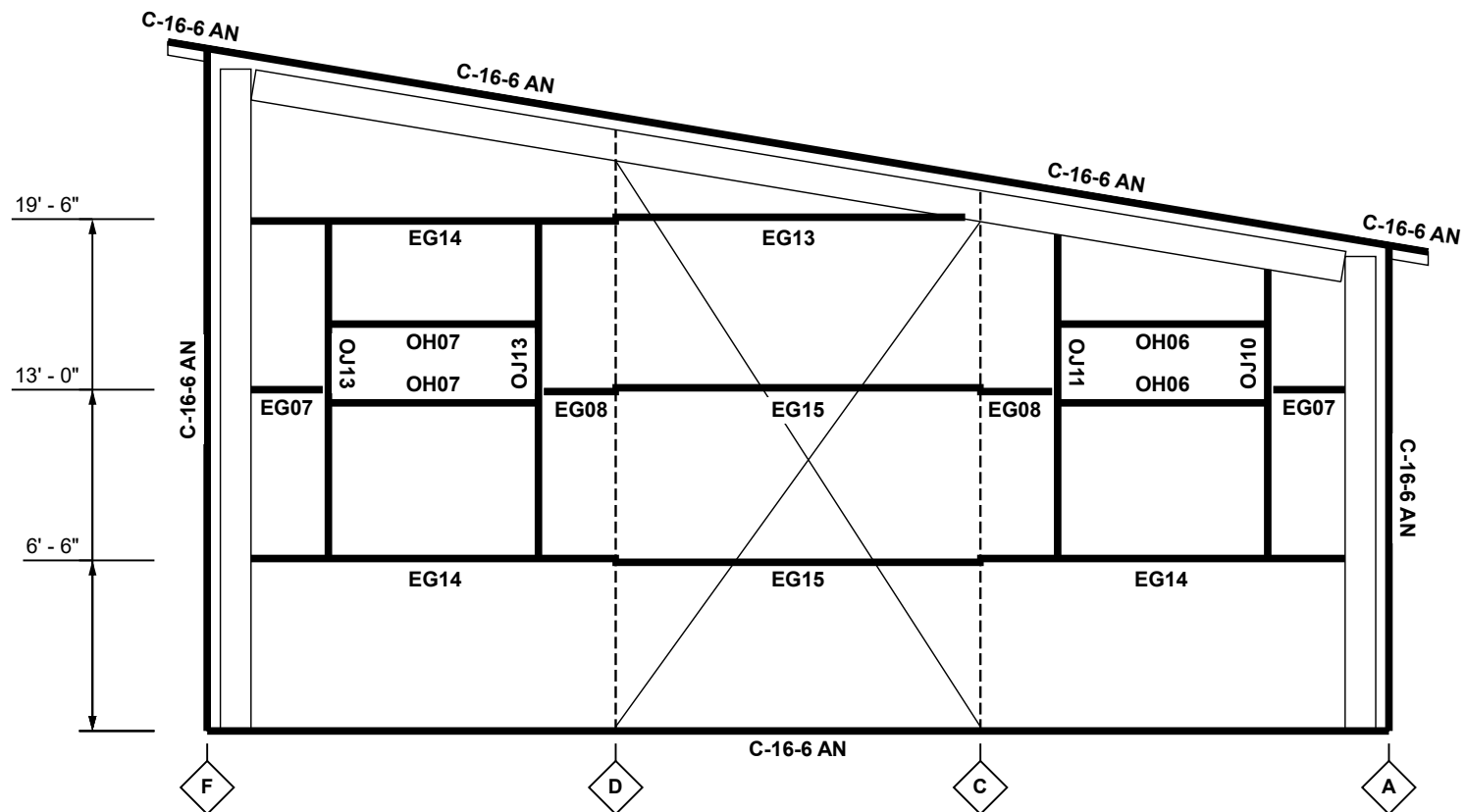


This illustration is for reference only, and is to be used to supplement the engineering drawings. If any discrepancies occur, the engineering plans will always take precedence.

Sidewall B Girt Layout, Frame Line F



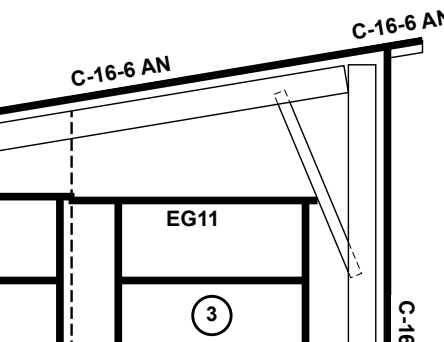
Member Table		
Piece Mark	Product Code	Length
EG07	C-16-14 Z	2' - 8 13/16"
EG08	C-16-14 Z	2' - 10 5/16"
EG13	C-16-14 Z	13' - 5 3/16"
EG14	C-16-14 Z	14' - 0 3/16"
EG15	C-16-14 Z	14' - 1 11/16"
OH06	C-16-14 C	8' - 0"
OH07	C-16-14 C	8' - 0"
OJ10	C-16-14 C	11' - 0 15/16"
OJ11	C-16-14 C	12' - 4 15/16"
OJ13	C-16-14 C	13' - 0"
--	C-16-6 AN	Stock Length



This illustration is for reference only, and is to be used to supplement the engineering drawings. If any discrepancies occur, the engineering plans will always take precedence.

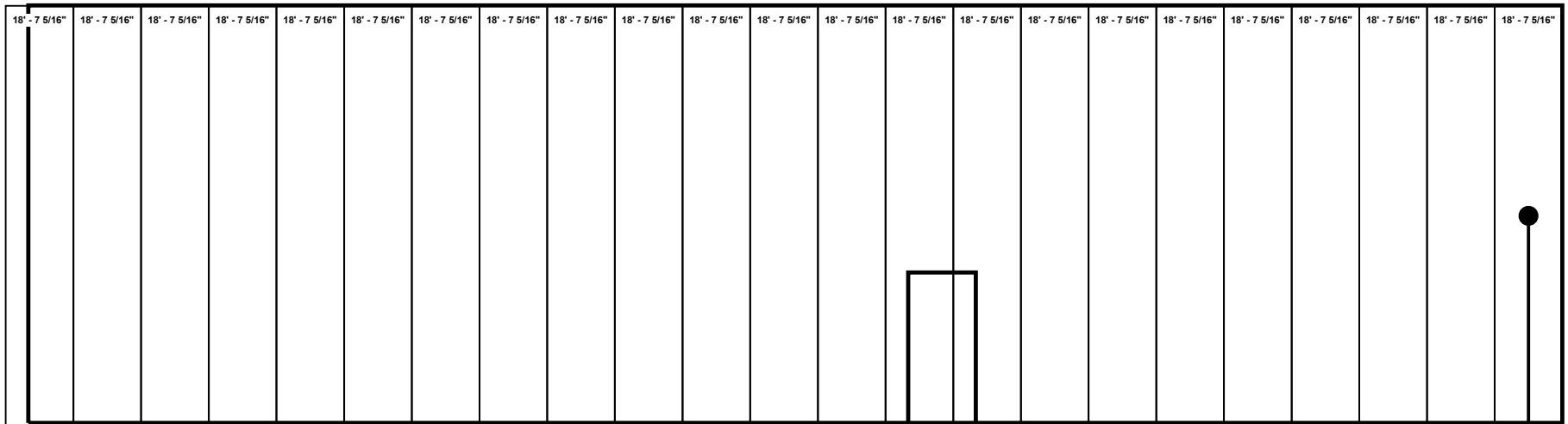
Endwall A Girt Layout, Frame Line 1



Opening Table				Member Table		
Num	Jamb 1	Jamb 2	Header/Sill	Piece Mark	Product Code	Length
3	OJ08	OJ08	OH07	EG01	C-16-14 Z	5"
4	OJ12	OJ13	OH07	EG02	C-16-14 Z	7"
9	OJ09	OJ09	OH05	EG03	C-16-14 Z	1' - 4 1/8"
10	OJ09	OJ09	OH05	EG04	C-16-14 Z	1' - 6 1/2"
13	OJ06	OJ07	OH07	EG05	C-16-14 Z	1' - 7 1/2"
14	OJ13	OJ13	OH07	EG06	C-16-14 Z	1' - 11"
				EG09	C-16-14 Z	3' - 2 1/2"
				EG10	C-16-14 Z	3' - 4"
				EG11	C-16-14 Z	10' - 7 5/8"
				EG12	C-16-14 Z	11' - 11 1/2"
				EG16	C-16-14 Z	15' - 5 7/8"
				EG17	C-16-14 Z	18' - 3"
				OH05	C-16-14 C	5' - 0"
				OH07	C-16-14 C	8' - 0"
				OJ06	C-16-14 C	7' - 7 1/2"
				OJ07	C-16-14 C	8' - 11 1/2"
				OJ08	C-16-14 C	9' - 8"
				OJ09	C-16-14 C	9' - 10"
				OJ12	C-16-14 C	12' - 7 3/4"
				OJ13	C-16-14 C	13' - 0"
				--	C-16-6 AN	Stock Length

This illustration is for reference only, and is to be used to supplement the engineering drawings. If any discrepancies occur, the engineering plans will always take precedence.



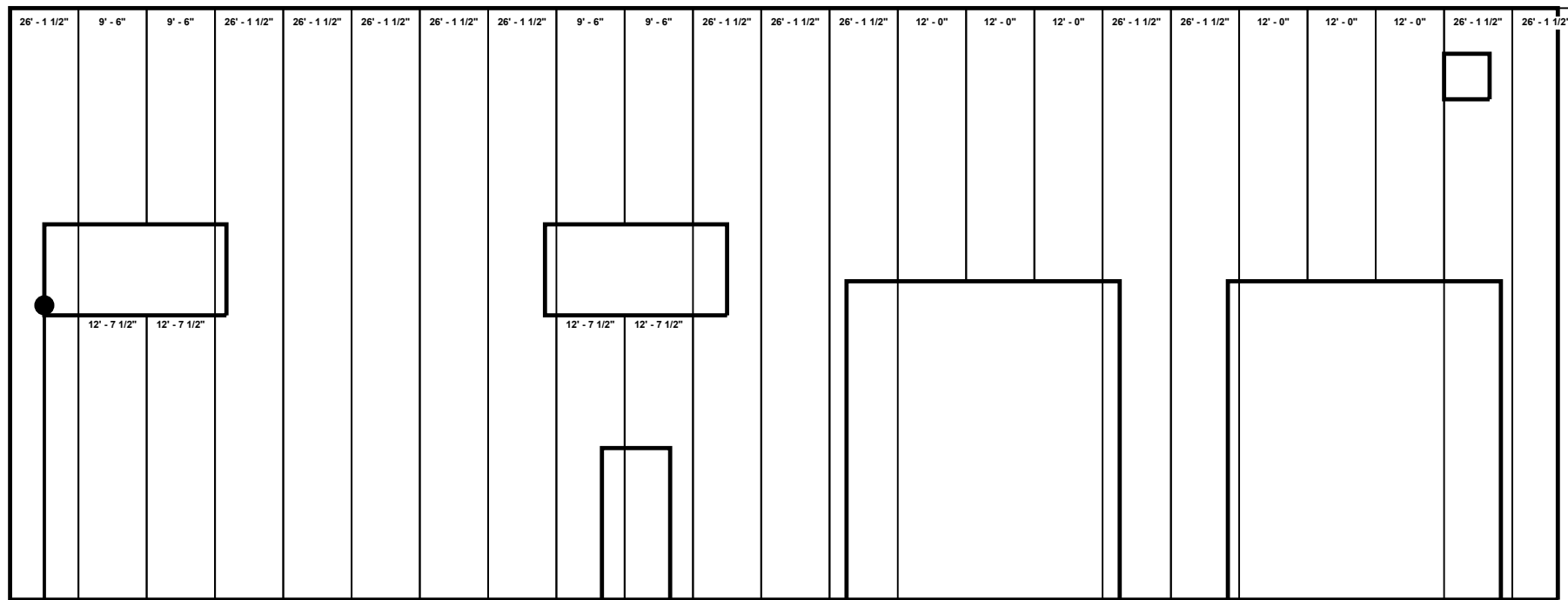


←
Sheeting starts with this sheet
and moves across the wall

This illustration is for reference only, and is to be used to supplement the engineering drawings. If any discrepancies occur, the engineering plans will always take precedence.

Sidewall A Sheeting Layout, Frame Line A



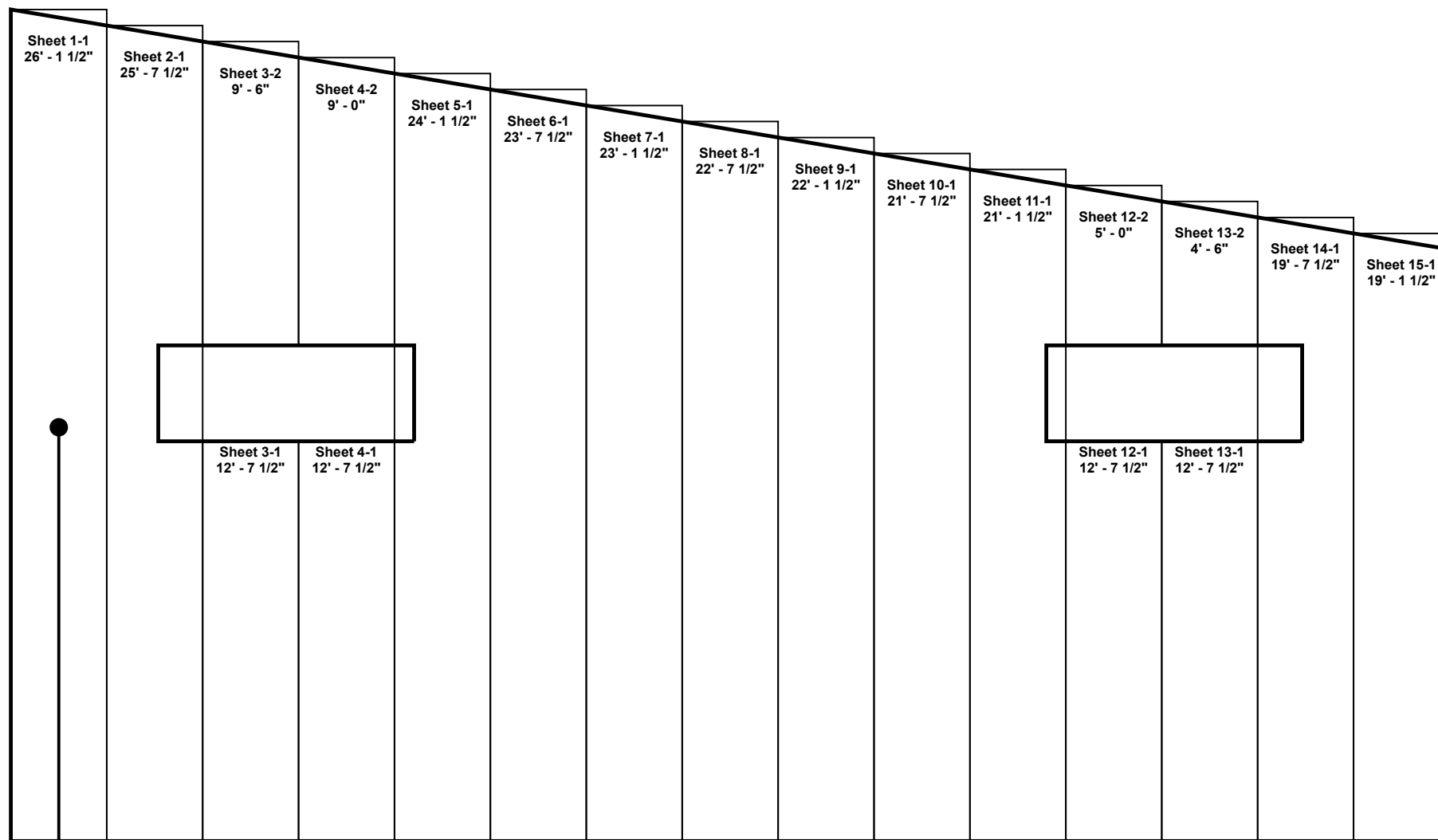


Sheeting starts with this sheet
and moves across the wall

This illustration is for reference only, and is to be used to supplement the engineering drawings. If any discrepancies occur, the engineering plans will always take precedence.

Sidewall B Sheeting Layout, Frame Line F



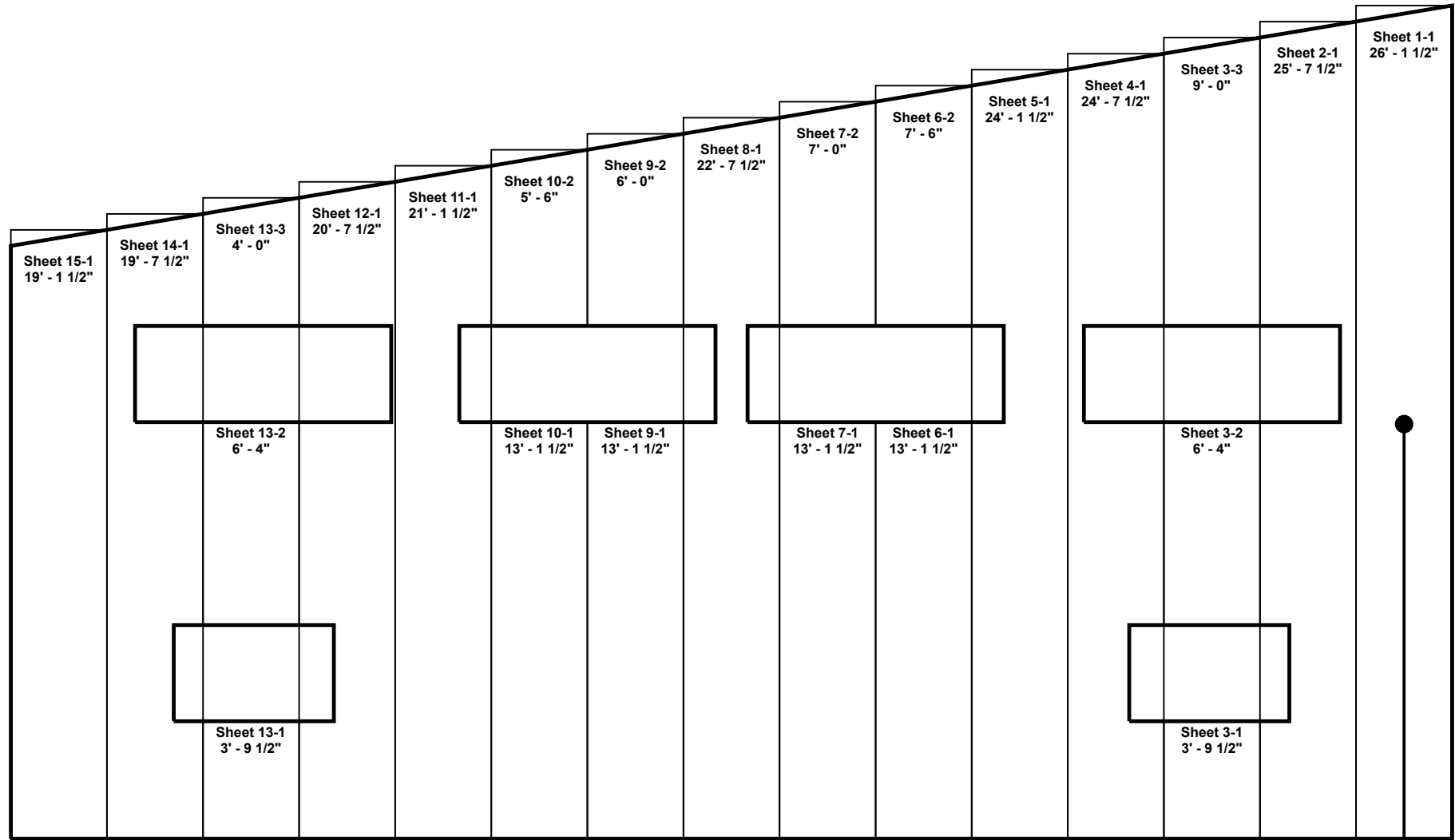


Sheathing starts with this sheet
oves across the wall

This illustration is for reference only, and is to be used to supplement the engineering drawings. If any discrepancies occur, the engineering plans will always take precedence.

Endwall A Sheeting Layout, Frame Line 1





←
Sheeting starts with this sheet
and moves across the wall

This illustration is for reference only, and is to be used to supplement the engineering drawings. If any discrepancies occur, the engineering plans will always take precedence.

Endwall B Sheeting Layout, Frame Line 8

