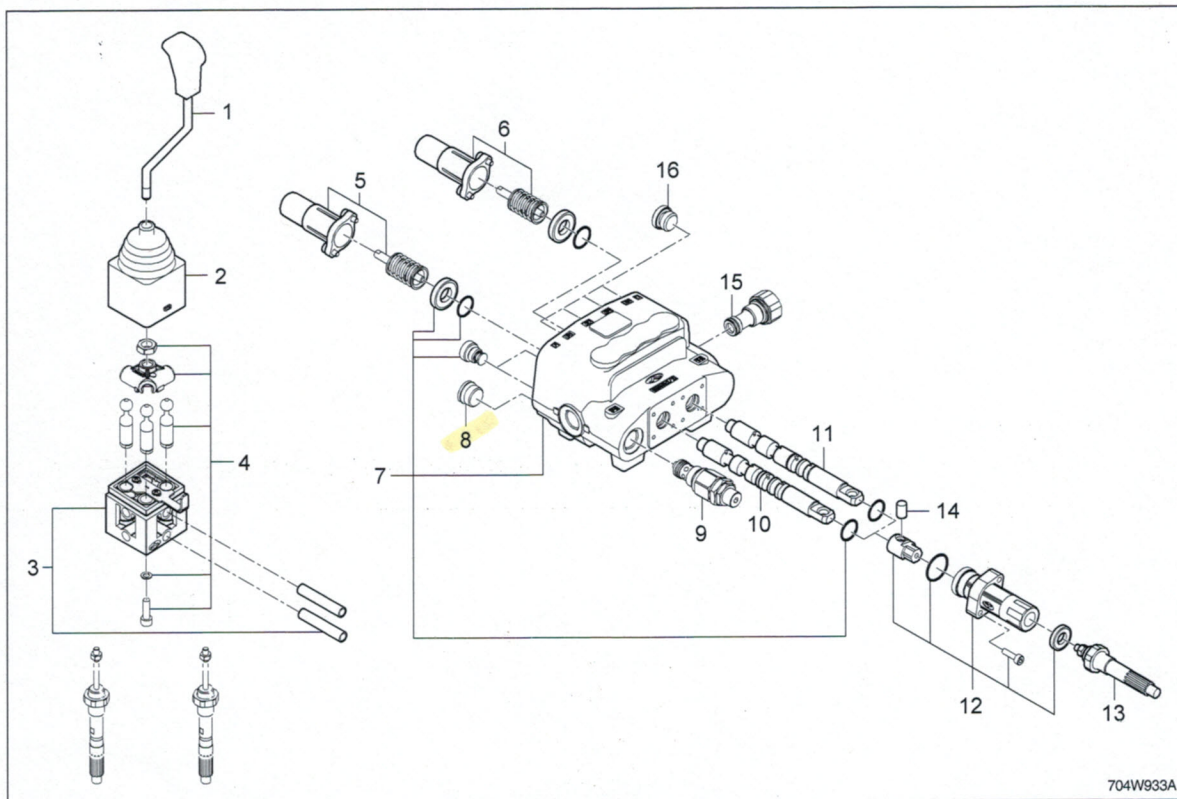


4.2.2 DISASSEMBLING THE JOY-STICK VALVE



704W933A

- | | | |
|-----------------------------------|-------------------|-----------------------------|
| (1) Handle | (7) Body Ass'y | (12) Cable Remote Cap Ass'y |
| (2) Rubber, Bellow | (8) Plug | (13) Cable |
| (3) Body Ass'y | (9) Valve, Relief | (14) Pin |
| (4) Mechanical Joystick Lcb Ass'y | (10) Spool | (15) Plug |
| (5) Spool Positioner | (11) Spool | (16) Plug |
| (6) Spool Positioner | | |

1. Loosen the nuts from cable (13) and remove the screws (12), rod pins (14) and cables (13).
2. Remove End cap screws, then End cap (5) from the float spool (10).
3. Remove end cap screws and End cap (6) from the spool (11).
4. Gently slide each float spool (10) with the spool control kit, Ring and O-ring out of the valve body.

5. Disassemble the spool (11) in the same manner as the float spool using steps 1 through 4.
6. Remove the load check plugs (8) with the O-rings, springs, and load check poppets from the check valve ports.

+ IMPORTANT

- *The float spool (10) and spool (11) are not interchangeable and will only work in their respective bores.*

Ensure that the spools are inserted into the proper bores during reassembly.

A. INSPECTION:

1. Inspect the spools and the spool bores for pitting, scratching, or excess wear. If they are found defective, replace the Joy-stick valve assembly.
2. Check that the spool moves freely in the spool bore.
3. Inspect the load check valve poppets for pitting or scratches.
4. Inspect all springs for distortion. Replace those found to be defective
5. Replace all O-rings and seals during reassembly and lightly lubricate with petroleum jelly.

GENERAL
 ENGINE
 CLUTCH
 TRANSMISSION
 HST
 REAR AXLE
 PARK
 FRONT AXLE
 STEERING
HYDRAULIC
 ELECTRIC
 INDEX