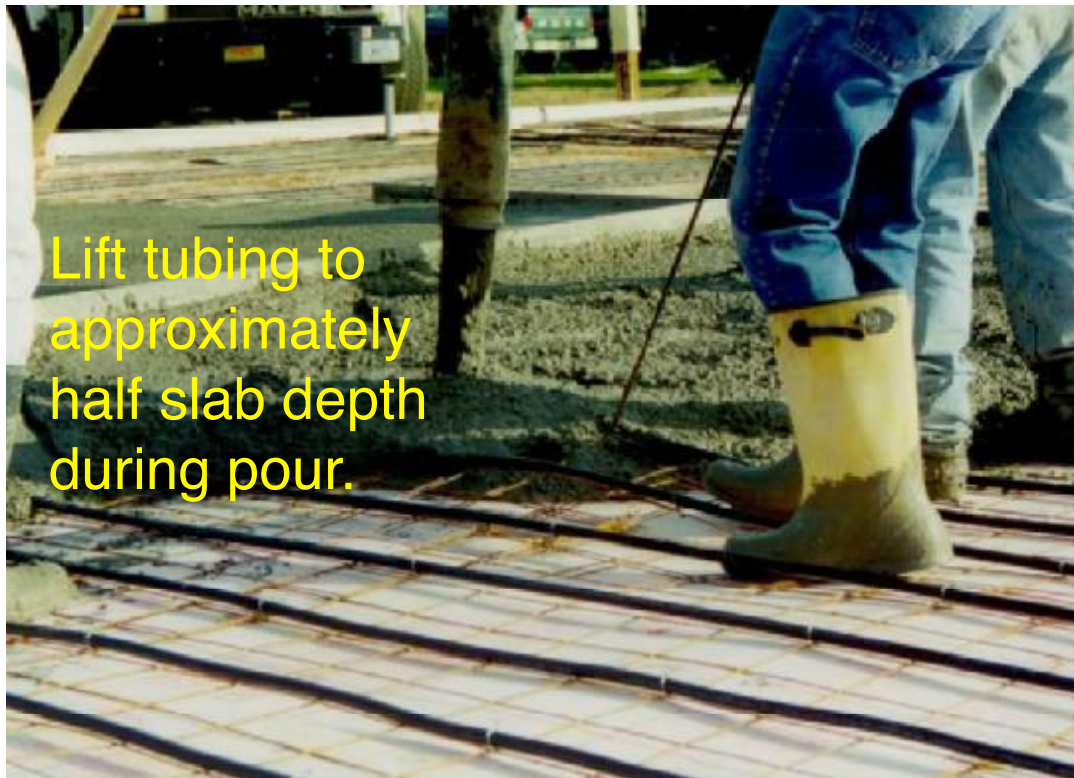
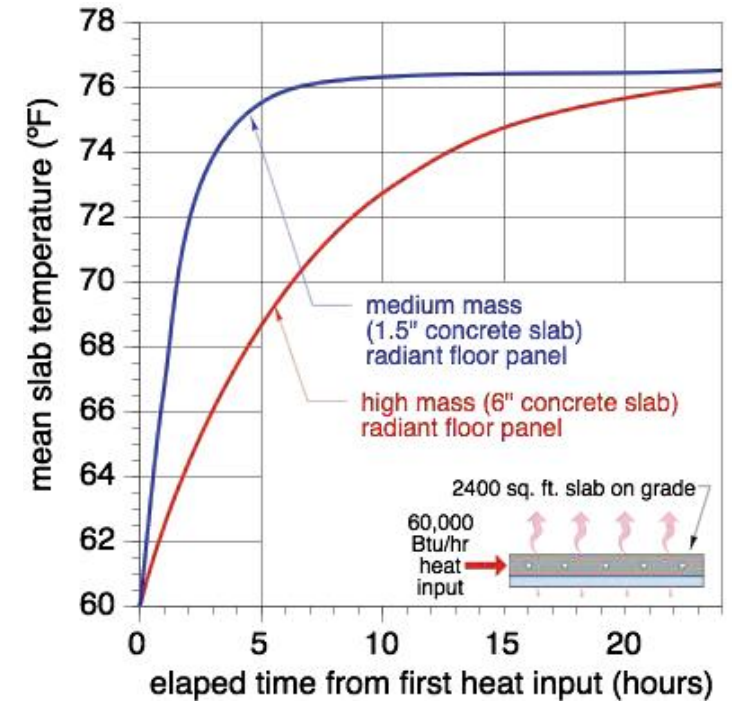


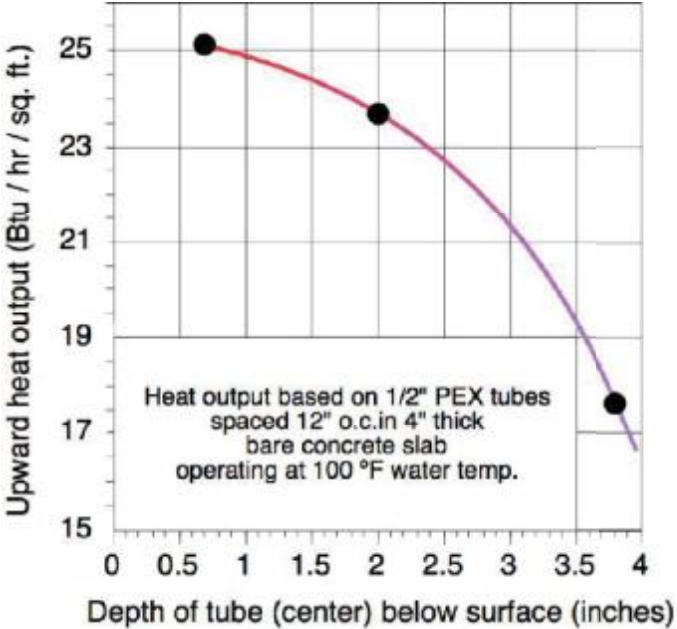
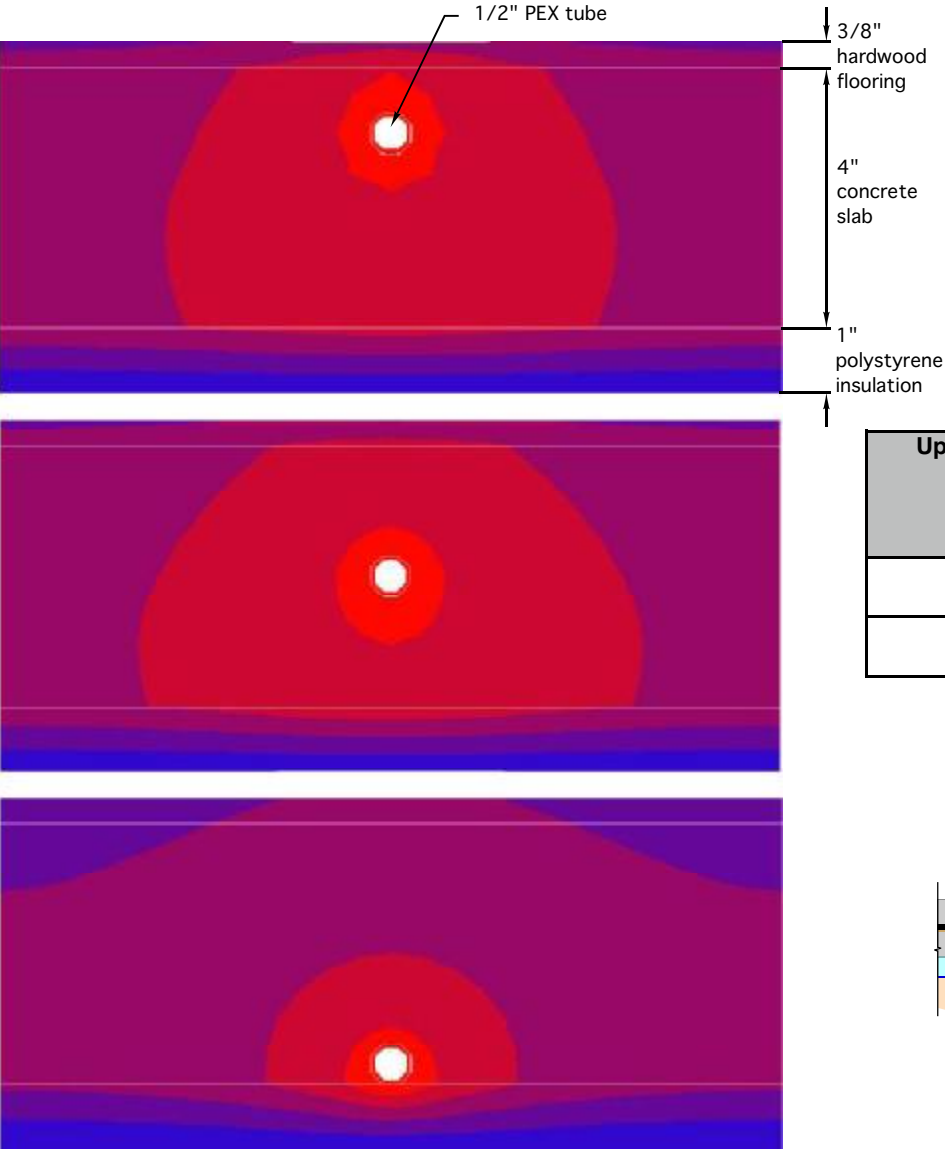
4. Don't leave tubing at bottom of slab.

- Requires higher water temperature for same upward heat output. (next slide)
- Increases downward heat loss
- Increases response time, which can exasperate temperature overshoot and undershoot.



4. Don't leave tubing at bottom of slab.

Deeper tubing requires increased water temperature for a given heat output.



Upward heat output	Average circuit water temperature with tubing at ½ slab depth	Average circuit water temperature with tubing at bottom of slab
15 Btu/hr/ft²	95°F	102°F
30 Btu/hr/ft²	120°F	134°F

