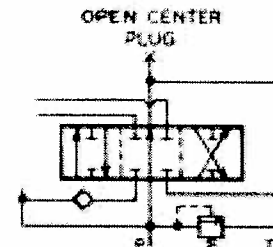
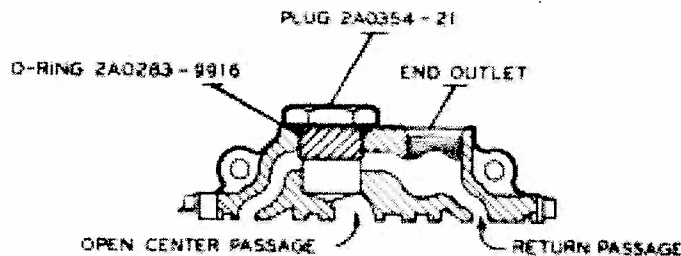




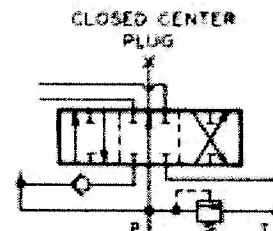
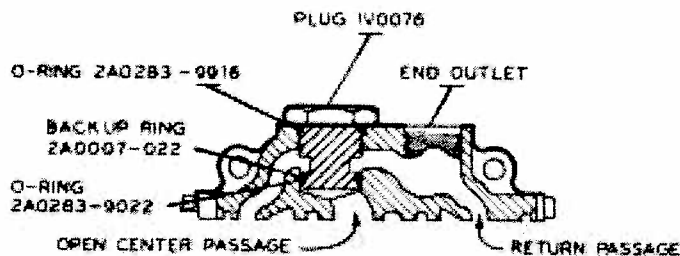
SERIES B DIRECTIONAL CONTROL VALVE CONVERSION PLUG OPTIONS
(Refer to B series Directional Control Valve Specification Sheet, Form VBA1)

STANDARD OPEN CENTER VALVE WITH CONVERSION PLUG (option #3)
Plug Assembly 2A0354 - 121



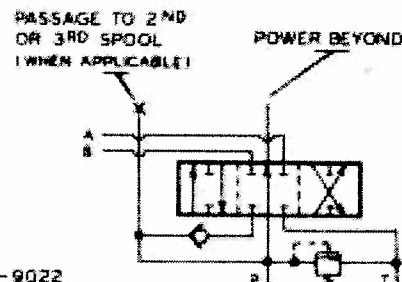
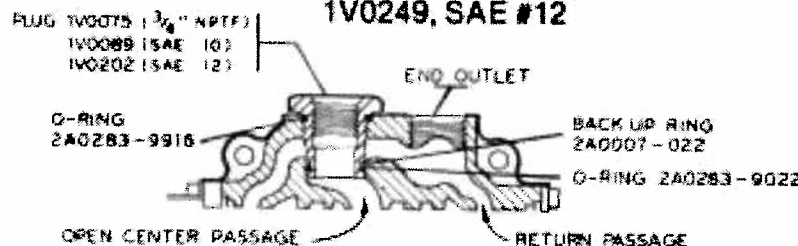
This option allows conversion from standard open center function to either power beyond or to a closed center function.

CLOSED CENTER PLUG
Plug Assembly 1V0206



By replacing the conversion plug assembly (2A0354-121) with the closed center plug assembly (1V0206) the directional control valve is converted from open center to closed center function.

POWER BEYOND PLUG
Plug Assembly 1V0208, 3/4" NPTF port
1V0209, SAE #10
1V0249, SAE #12



By replacing plug assembly 2A0354-121 with the power beyond plug assembly, an additional valve may be connected downstream of the B series valve.

NOTE: Closed center or power beyond plugs CANNOT be installed in B series valves without the conversion plug option. Closed center version valves or valves with power beyond option may be converted using any of the above plug assemblies.