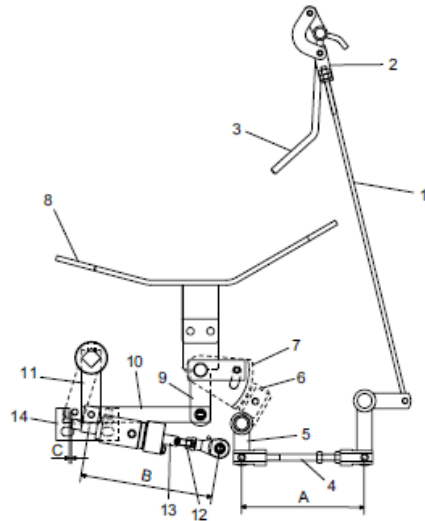
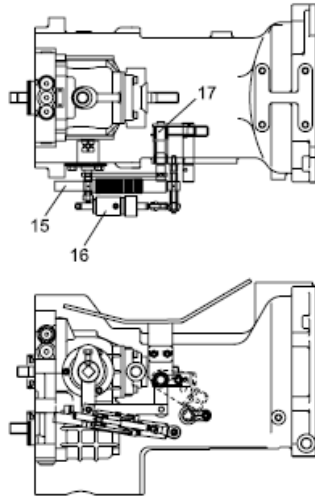


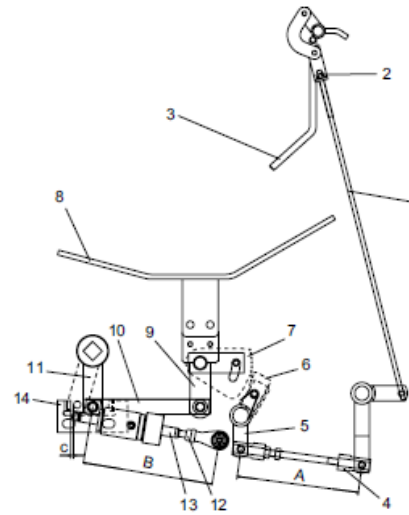
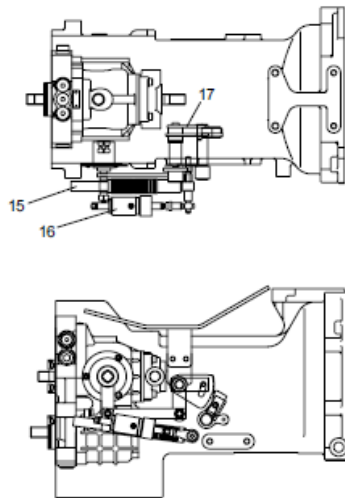
4.2.23 ASSEMBLING AND ADJUSTMENT THE HST PEDAL DAMPER ASSEMBLY

OLD



704W497A

NEW (Since 2007 model year)



704W497B

- | | | | |
|----------------------|---|-----------------------|----------------------------------|
| (1) Rod | (6) Lock Lachat
(Old: Drum) | (10) Connecting Plate | (15) Damper Assembly |
| (2) Nut | (7) Sector Lachat
(Old: Rubber Shoe) | (11) Joint | (16) Damper Cylinder
Assembly |
| (3) Holding Lever | (8) Hst Pedal | (12) Nut | (17) Lock Shaft |
| (4) Connecting Rod | (9) Pedal Holder | (13) Adjusting Rod | |
| (5) Connecting Lever | | (14) Adjusting Plate | |

1. Lift rod (4) to take up the free play adjust nuts until distance (A) is 152 mm (5.984 in.).
Tighten the nuts.
2. Loosen nut (12) and adjust rod (13) until distance (B) is 163.5 mm (6.437 in.).
Tighten the nut (12).
3. Start the tractor, engage the clutch and put the range lever in the low or high position and the hydrostatic lever in the neutral position. Disengage the clutch.
If the tractor moves, stop the tractor and adjust distance (B) again.

4. Put the joint (11) in the maximum forward travel position and then return the lever by 0.5 ~ 1.0 mm (0.0196 ~ 0.0393 in.) distance (C).

Adjust the plate (14) until there no clearance between the pin on joint (11) and plate (14).

Item	Factory Spec.
Distance (A)	152 mm 5.984 in.
Distance (B)	164 mm 6.457 in.
Distance (C)	0.5 ~ 1.0 mm 0.020 ~ 0.039 in.

GENERAL

ENGINE

CLUTCH

TRANSMISSION

HST

REARAXLE

BAPNE

FRONTAXLE

STEERING

HYDRAULIC

ELECTRIC

INDEX