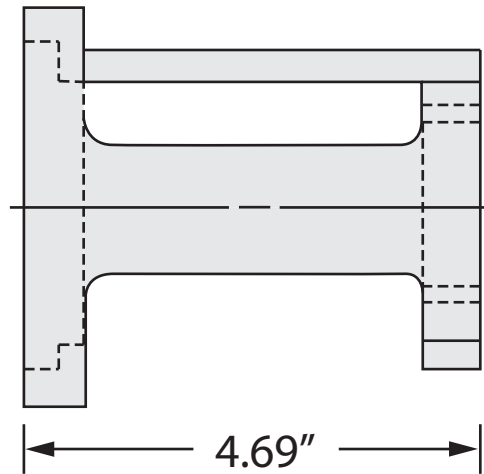
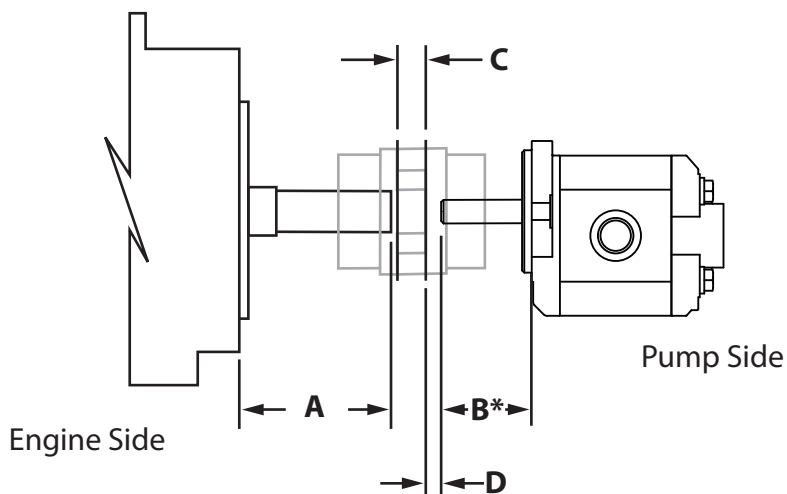
**PUMP END****Face-To-Face Length****PUMP MOUNT FACE-TO-FACE LENGTH = A + B + C + D**

Be sure coupling hub bore length is not longer than pump shaft.



**A** - Engine shaft length including pilot depth to engine block.

**B\*** - Pump shaft length including pilot depth to pump flange mounting face (In some applications this can be coupling hub bore length if pump shaft is short).

**C** - Width of flexible coupling insert.

**D** - Clearance as required, normally  $\frac{1}{16}$ " to  $\frac{1}{2}$ "

**Note:**

If shaft and coupling stack up does not provide for "D" clearance, consideration should be made to shorten engine shaft or select a shaft coupling with thru hole in insert for shaft clearance.

**! Safety Note:**

In locations where coupling access is not covered or where body, loose clothing, or equipment may be exposed to rotating coupling, this cover must be used.

