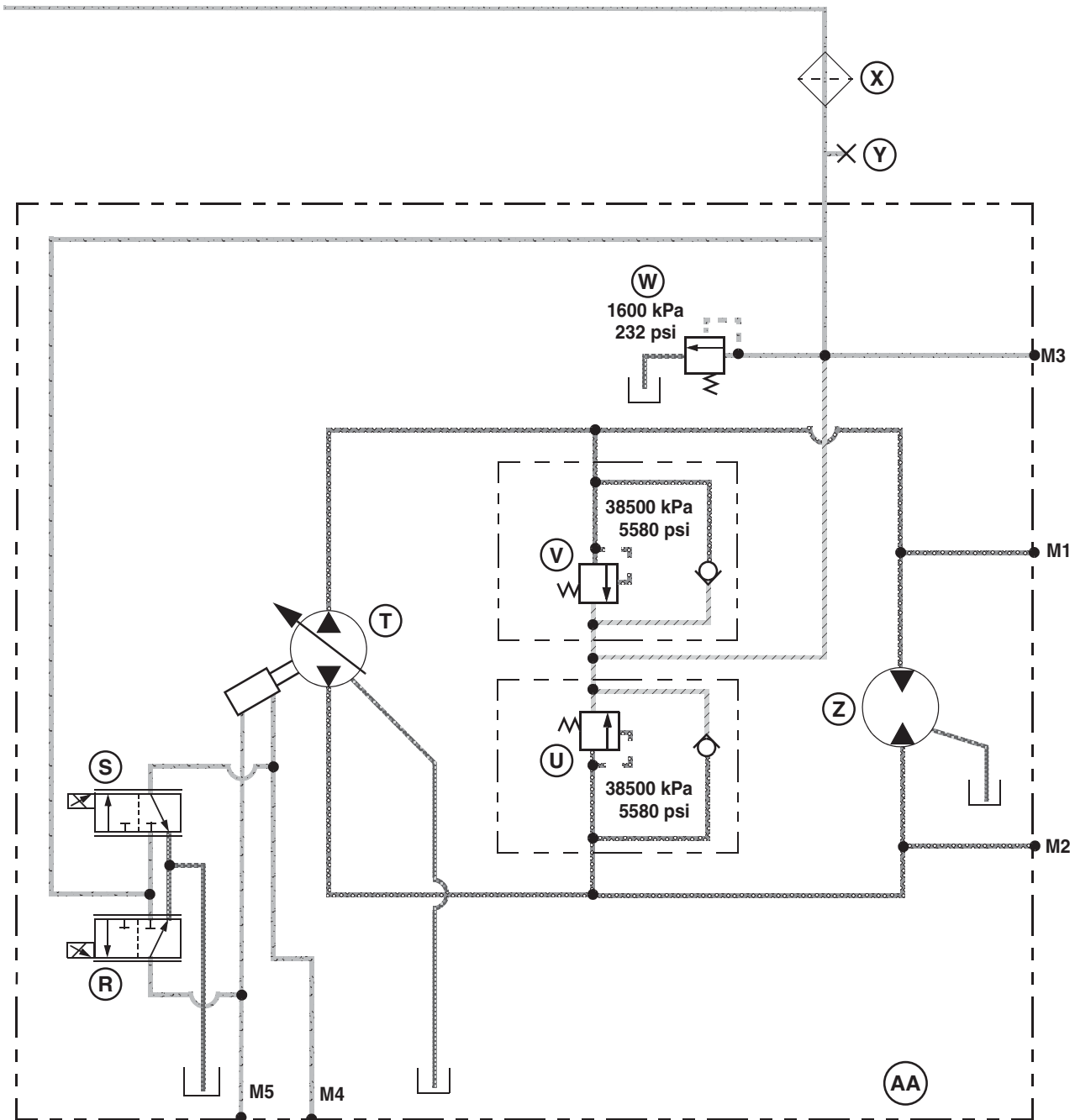


## Steering/Charge Pump Schematics, eHydro™



LVAL 10862 —UN—01SEP10

Continued on next page

AA95137,0002A56 -19-13SEP10-3/4

Schematics

R—Proportional Solenoid Valve	U—System Relief Valve	X—Mesh Filter	AA—Hydrostatic Transmission
S—Proportional Solenoid Valve	V—System Relief Valve	Y—Diverter Port (Test Port)	
T—Hydraulic Pump (51 cm <sup>3</sup> /rev)	W—Charge Relief	Z—Hydraulic Motor (43.5 cm <sup>3</sup> /rev)	

AA95137,0002A56 -19-13SEP10-4/4