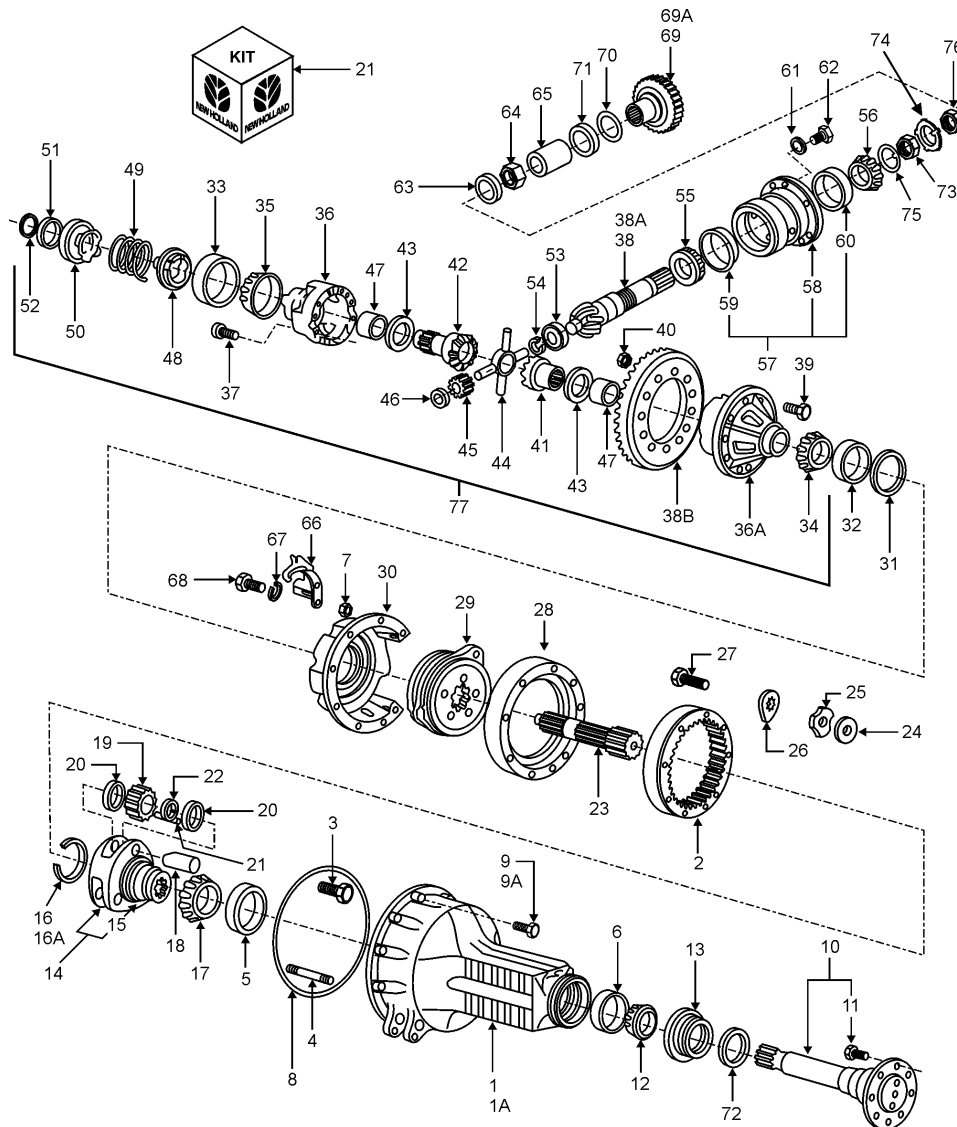


6610s - 4 Cyl Ag
Tractor (01/94 -
12/03)

05 - Rear Axle

04a01 - Rear Axle
Differential & Related
Parts



—

9 9

—

—



#	Part #	Part Name	Description	Qty
12	NDA4221A	BEARING ASSY 73.05 mm ID x 112.7379 mm OD x 25.527 mm	-	2
13	F2NN4969BA	RETAINER	& Seal Assy	2
13	81866390	OIL SEAL 88.52mm ID x 123.29mm OD x 22.94mm Thk	Seal - Rear axle shaft dirt	2
14	D0NN4N029A	PINION CARRIER	GEAR CARRIER Assy, Incl. Ref. 15	2
15	D0NN4N030A	CARRIER	-	2
16	C7NN4N031C	RETAINER 4.52" ID	-	2
17	TAJAA1244A	BEARING CONE 3.751" ID x 6.001" OD x 1.562"	-	2
18	D0NN4048A	SHAFT	5610S,6610S,6810S	6
18	D0NN4048A	SHAFT	7610S,7810S,8010S	8
19	D0NN4044A	GEAR 20 Teeth	5610S,6610S,6810S	6
19	D0NN4044A	GEAR 20 Teeth	7610S,7810S,8010S	8
20	81803272	THRUST WASHER 45.92mm ID x 67.69mm OD x 0.81mm Thk	WASHER,THRUST (6.76cm OD) 12 5610S,6610S,6810S	12
20	81803272	THRUST WASHER 45.92mm ID x 67.69mm OD x 0.81mm Thk	WASHER,THRUST (6.76cm OD) 16 7610S,7810S,8010S	16
21	DAPN4013A	KIT	Bearing 5610S,6610S,6810S	6
21	DAPN4013A	KIT	Bearing 7610S,7810S,8010S	8
22	C5NN4A008A	SPACER	2.23 (5.66 cm) OD 5610S,6610S,6810S	6
22	C5NN4A008A	SPACER	2.23 (5.66 cm) OD 7610S,7810S,8010S	8
23	D0NN4049A	PLANETARY GEAR	-	2
24	C5NN4374L	SPACER 0.90" ID x 2.12" OD x 0.054" Thk	-	AR
24	81803503	SHIM 22.86mm ID x 53.85mm OD x 1.47mm Thk	-	AR
24	C5NN4374N	SPACER 0.90" ID x 2.12" OD x 0.062" Thk	(1.549/1.575 mm)	AR



#	Part #	Part Name	Description	Qty
24	C5NN4374R	SPACER 0.90" ID x 2.12" OD x 0.066" Thk	(1.651/1.676 mm)	AR
24	C5NN4374S	SPACER 0.90" ID x 2.12" OD x 0.070" Thk	(1.753/1.778 mm)	AR
24	C5NN4374T	SPACER 0.90" ID x 2.12" OD x 0.074" Thk	(1.854/1.880 mm)	AR
24	C5NN4374U	SPACER 0.90" ID x 2.12" OD x 0.078" Thk	(1.956/1.981 mm)	AR
24	C5NN4374V	SPACER 0.90" ID x 2.12" OD x 0.082" Thk	(2.057/2.083 mm)	AR
25	D0NN4N237A	WASHER	-	2
26	D0NN4N240A	LOCKING PLATE	-	2
27	304842S36	BOLT Hex, 7/8"-9 x 2", G5	-	2
28	REFERENCE	SPARE PART	Housing, Refer to Fig. 02A01	2
29	REFERENCE	SPARE PART	Brake Assy, Refer to Fig. 02A01	2
30	E4NN2N099AA	HOUSING	RH	1
30	E4NN2N100CA	HOUSING	LH	1
31	C5NN4548B	SHIM 3.80" ID x 4.40" OD x 0.046" Thk	(1.118/1.168 mm)	AR
31	81803517	SHIM 96.52mm ID x 111.76mm OD x 1.32mm Thk	(1.270/1.321 mm)	AR
31	C5NN4548D	SHIM 3.80" ID x 4.40" OD x 0.058" Thk	(1.422/1.473 mm)	AR
31	C5NN4548E	SHIM 3.80" ID x 4.40" OD x 0.064" Thk	(1.575/1.626 mm)	AR
31	C5NN4548F	SHIM 3.80" ID x 4.40" OD x 0.070" Thk	(1.727/1.778 mm)	AR
31	C5NN4548G	SHIM 3.80" x 4.40" x .074/.076" Thk	(1.880/1.930 mm)	AR
31	C5NN4548H	SHIM 3.80" x 4.40" x .080/.082" Thk	(2.032/2.083 mm)	AR
32	510892	BEARING CUP 112.71mm OD x 23.81mm W	RH	1
33	957E4222	BEARING ASSY 107.975 mm ID x 158.775 mm OD x 23.02 mm	LH	1

#	Part #	Part Name	Description	Qty
34	510884	BEARING CONE 66.69mm ID x 30.05mm W	RH	1
35	957E4221	BEARING ASSY 107.975 mm ID x 158.775 mm OD x 23.02 mm	Rear Axle, Differential, LH	1
36	81816247	HOUSING	RH & LH	1
37	43104S	LOCK BOLT Hex, 1/2" - 13 x 2 7/8", Gr 8	-	7
36A	83959395	GASKET 1.32mm Thk	Gear	1
38	82011811	GEAR SET	Rear Axle, Includes Ref. 38A & 38B@@Stamped C5NN4210G	1
38	E0NN4209CA	GEAR SET	5.28:1, L/FWD@@Stamped C5NN4210G on Ring &	1
38A	NSS	NOT SOLD SEPARAT	Gear, Rear Axle Drive 5.28:1	1
38B	NSS	NOT SOLD SEPARAT	Gear, Rear Axle	1
39	83957533	SCREW Pan HD, 1/2" - 20 x 1-5/8", Gr 8	Hex, G8	12
40	380135S43	LOCK NUT 1/2"-20, GA	-	12
41	81803445	GEAR 38 Teeth	RH	1
42	C5NN4239A	GEAR 27 Teeth	LH	1
43	957E4228	WASHER	-	2
44	81876885	SPIDER 28.4mm Cap Dia, 179.3mm L	-	1
45	957E4292B	DRIVE PINION	-	4
46	D9NN4230AA	BELLEVILLE WASHER 1" x 2" x .060" Thk	-	4
47	E185EB9	BUSHING	Gear Case RH, Differential	2
48	E186EB9	ADAPTER	Differential Lock Gear Case	1
49	E188EB9	SPRING	Differential Lock Coupler	1
50	C5NN4N064A	COUPLING	-	1



#	Part #	Part Name	Description	Qty
51	E189EB9	WASHER	Differential Lock, Coupler Stop	1
52	E1ADDN4286	SNAP RING 2.37" ID	-	1
53	81824478	BEARING ASSY 30mm ID x 62mm OD x 19.05mm W	Drive Pinion Pilot	1
54	960E4627	CIRCLIP	-	1
55	E3NN4630AA	TAPERED ROLLER BEARING	Rear	1
56	81845711	BEARING ASSY	Tapered Roller	1
57	D5NN4614A	BEARING HOUSING	Assy, Incl. Ref. 58 thru 60	1
58	NSS	NOT SOLD SEPARAT	Retainer	1
59	86017029	BEARING CUP 111.13mm OD x 20.64mm W	-	1
60	NCA4616A	BEARING ASSY 1.7505" ID x 3.501" OD x 1.1955"	-	1
61	280248	LOCK WASHER 9/16"	-	AR
62	304728S36	BOLT Hex, 9/16"-12 x 1 1/4", G5	-	AR
63	C5NN4667B	BEARING WASHER	L/Handbrake & Load Monitor	1
64	E7NN4634AA	BEARING LOCK NUT 1 5/8"-20	L/4WD	1
64	E7NN4N309AB	NUT	W/FWD	1
65	C5NN4684B	COUPLING	L/FWD NA, All Rest of World	1
65	E0NN4684AA	COUPLING 23T	Drive	1
66	C5NN4194B	BLOCK	W/540/1000 PTO	1
67	80680	LOCK WASHER 3/8 0.381 CST ZND	-	1
68	88206	BOLT Hex, 3/8" - 16 x 1", Gr 5	-	1
69	E6NN3N175AA	GEAR 43 T	Front Axle Drive	1



#	Part #	Part Name	Description	Qty
69	83959506	GEAR 28 T	Front Axle Drive, High Clearance I	
70	E0NN3N252AB	SHIM	-	AR
71	I33066	SNAP RING #150, Ext	-	I
72	E5NN4N297AA	SEAL	Rear Axle Shaft Dirt, Plastic	2
72	E9NN4N297AB	SEAL	Rear Axle Shaft Dirt, Plastic	2
73	82983637	BEARING LOCK NUT I 5/8"-20 x 5mm Thk	-	2
74	960E4636	LOCK WASHER	Nut Lock	I
75	C5NN4667B	BEARING WASHER	-	I
76	82983638	LOCK NUT I 5/8"-20 x 10mm Thk	-	I
77	82935993	DIFFERENTIAL ASSY	With Bolts	I
77	82935996	DIFFERENTIAL ASSY	-	I

