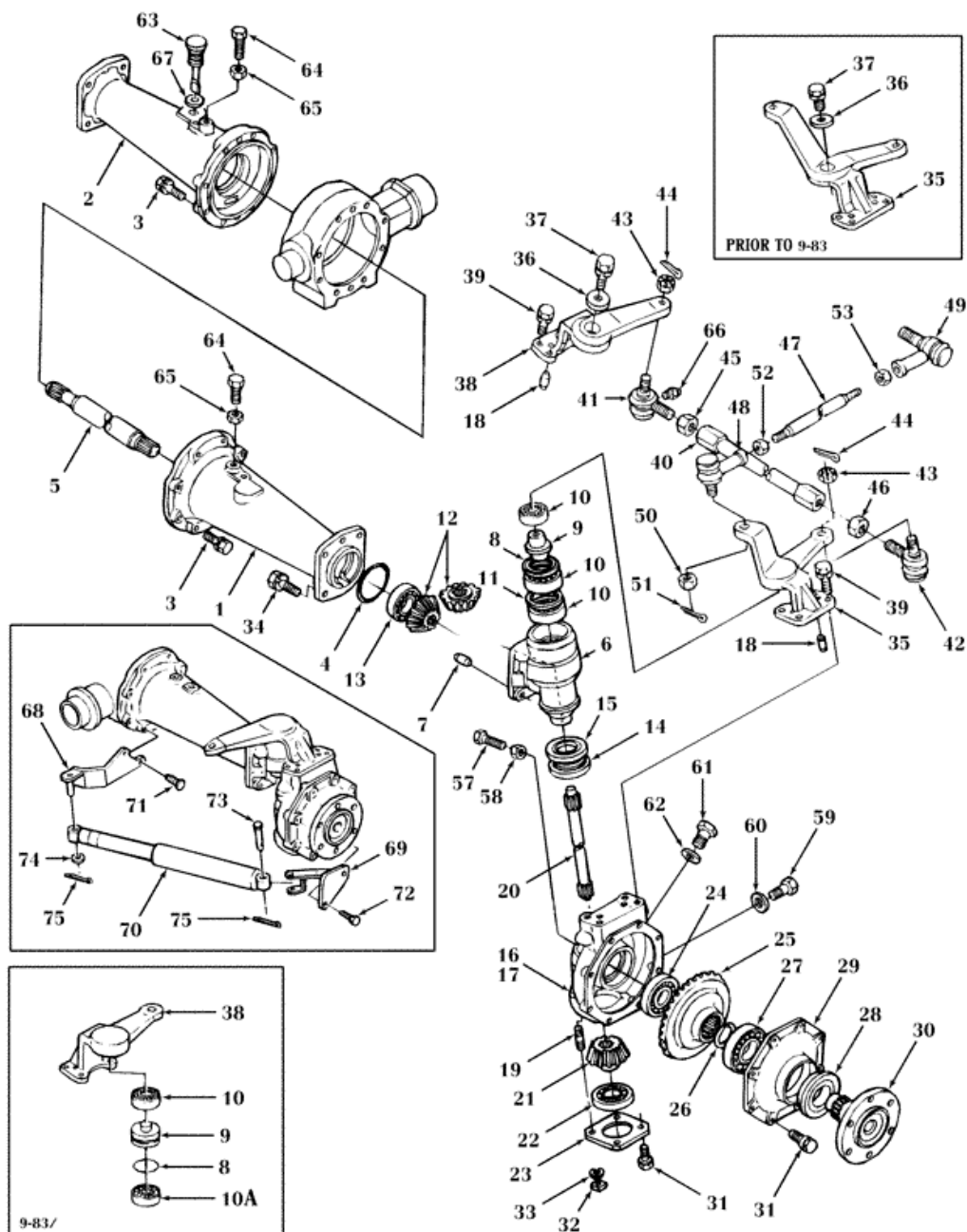


(1310) - 3 CYL COMPACT TRACTOR (1/83-12/86) > (03C02) - FRONT AXLE, (NH-NA) W/4WD, 1310, 1510





PARTS & MERCHANDISE  
STORE

**New Holland Agriculture 621 State Street**  
**NA Customer Relations@newholland.com Racine, Wisconsin 53404**  
**866-639-4563 option 1**

(1310) - 3 CYL COMPACT TRACTOR (1/83-12/86) > (03C02) - FRONT AXLE, (NH-NA) W/4WD, 1310, 1510

Diag #	Part #	Name	Description	Qty
1	SBA326340770	HOUSING	Case, L.H.	1
		(Prod Date) after 01-JAN-1983;	(Prod Date) after 01-JAN-1983;	1
2	SBA326340761	CASE	R.H.	1
		(Prod Date) after 01-JAN-1983;	(Prod Date) after 01-JAN-1983;	1
		SBA-326340761, Case, R.H., Must Also Replace (1) SBA-398400150, Dipstick (1) SBA-398990050, Gasket	SBA-326340761, Case, R.H., Must Also Replace (1) SBA-398400150, Dipstick (1) SBA-398990050, Gasket	1
3	SBA011511030	CAPTIVE WASHER SCREW,Hex, M10 x 30, G5	SCREW, CAPTIVE WASHER, Hex, M10 x 30, G5	16
		(Prod Date) after 01-JAN-1983;	(Prod Date) after 01-JAN-1983;	1
4	SBA052300850	O-RING	O-RING	2
		(Prod Date) after 01-JAN-1983;	(Prod Date) after 01-JAN-1983;	1
5	SBA326210760	SHAFT	Differential	2
		(Prod Date) after 01-JAN-1983;	(Prod Date) after 01-JAN-1983;	1
		Used on & BSN 00024	Used on & BSN 00024	1
5	SBA326210761	SHAFT	Differential	2
		(Prod Date) after 01-JAN-1983;	(Prod Date) after 01-JAN-1983;	1
		Used on & ASN 00025	Used on & ASN 00025	1
6	SBA322011990	CASE	Assy. Includes: Ref. 7	2
		(Prod Date) after 01-JAN-1983;	(Prod Date) after 01-JAN-1983;	1
7	SBA030501025	BALL STUD,M10 x 25 L	DOWEL, , Pin M10 x 25 L	2
		(Prod Date) after 01-JAN-1983;	(Prod Date) after 01-JAN-1983;	1
8	SBA050203150	SEAL	Seal, Oil, I.D. 50mm, O.D. 65mm	2
		(Prod Date) 01-JAN-1983-31-AUG-1983;	(Prod Date) 01-JAN-1983-31-AUG-1983;	1
8	SBA052300600	O-RING,G60	O-RING,G60	2
		(Prod Date) after 01-SEP-1983;	(Prod Date) after 01-SEP-1983;	1
9	SBA330310740	PIN	King	2
		(Prod Date) 01-JAN-1983-31-AUG-1983;	(Prod Date) 01-JAN-1983-31-AUG-1983;	1
9	SBA330310741	PIN	King	2

Diag #	Part #	Name	Description	Qty
		(Prod Date) after 01-SEP-1983;	(Prod Date) after 01-SEP-1983;	1
10	SBA040109034	BALL BEARING,32mm ID x 65mm OD x 17mm W	BEARING, BALL, 62/32	4
		(Prod Date) 01-JAN-1983-31-AUG-1983;	(Prod Date) 01-JAN-1983-31-AUG-1983;	1
10	SBA040136305	SPARE PART	Bearing, 6305, Upper	2
		(Prod Date) after 01-SEP-1983;	(Prod Date) after 01-SEP-1983;	1
10A	SBA040109034	BALL BEARING,32mm ID x 65mm OD x 17mm W	BEARING, BALL, 62/32, Lower	2
		(Prod Date) after 01-SEP-1983;	(Prod Date) after 01-SEP-1983;	1
11	SBA036500065	SNAP RING	Ring, Snap	2
		(Prod Date) after 01-JAN-1983;	(Prod Date) after 01-JAN-1983;	1
12	SBA326240310	GEAR	GEAR	4
		(Prod Date) after 01-JAN-1983;	(Prod Date) after 01-JAN-1983;	1
13	SBA040109033	BEARING ASSY,32mm ID x 75mm OD x 20mm W	Bearing, 6-3/32	2
		(Prod Date) after 01-JAN-1983;	(Prod Date) after 01-JAN-1983;	1
14	SBA042532007	BEARING ASSY	Bearing, Taper Roller	2
		(Prod Date) after 01-JAN-1983;	(Prod Date) after 01-JAN-1983;	1
15	SBA399030040	SEAL KIT	Kit, Oil Seal	2
		(Prod Date) after 01-JAN-1983;	(Prod Date) after 01-JAN-1983;	1
16	SBA322017500	CASING	Case Assy., L.H.	1
		(Prod Date) after 01-JAN-1983;	(Prod Date) after 01-JAN-1983;	1
		Used on & ASN UE06391, 1310	Used on & ASN UE06391, 1310	1
		Used on ASN UH06751, 1510	Used on ASN UH06751, 1510	1
17	SBA322017510	CASING	Case Assy., R.H. Includes: Ref. 18	1
		(Prod Date) after 01-JAN-1983;	(Prod Date) after 01-JAN-1983;	1
		Used on & ASN UE06391, 1310	Used on & ASN UE06391, 1310	1
		Used on ASN UH06751, 1510	Used on ASN UH06751, 1510	1
18	SBA030501025	BALL STUD,M10 x 25 L	DOWEL, , Pin M10 x 25 L	4
		(Prod Date) after 01-JAN-1983;	(Prod Date) after 01-JAN-1983;	1
19	SBA012110825	BOLT	STUD, Bolt	4

Diag #	Part #	Name	Description	Qty
		(Prod Date) after 01-JAN-1983;	(Prod Date) after 01-JAN-1983;	1
20	SBA322511290	SHAFT	Drive	2
		(Prod Date) after 01-JAN-1983;	(Prod Date) after 01-JAN-1983;	1
21	SBA326240300	GEAR	Pinion	2
		(Prod Date) after 01-JAN-1983;	(Prod Date) after 01-JAN-1983;	1
22	80037203	BEARING ASSY	Bearing, Ball	2
		(Prod Date) after 01-JAN-1983;	(Prod Date) after 01-JAN-1983;	1
23	SBA322213180	COVER	Case	2
		(Prod Date) after 01-JAN-1983;	(Prod Date) after 01-JAN-1983;	1
24	46805	BALL BEARING,30mm ID x 72mm OD x 19mm W	Bearing	2
		(Prod Date) after 01-JAN-1983;	(Prod Date) after 01-JAN-1983;	1
25	SBA326370480	GEAR	GEAR	2
		(Prod Date) after 01-JAN-1983;	(Prod Date) after 01-JAN-1983;	1
26	SBA398340270	SNAP RING	Ring, Snap	4
		(Prod Date) after 01-JAN-1983;	(Prod Date) after 01-JAN-1983;	1
27	114085	BALL BEARING,39.9999 mm ID x 79.9998 mm OD x 18.001 mm	Bearing	2
		(Prod Date) after 01-JAN-1983;	(Prod Date) after 01-JAN-1983;	1
28	SBA050609011	SEAL PROTECTION	Seal, Oil	2
		(Prod Date) after 01-JAN-1983;	(Prod Date) after 01-JAN-1983;	1
29	SBA322210741	COVER	COVER	2
		(Prod Date) after 01-JAN-1983;	(Prod Date) after 01-JAN-1983;	1
30	SBA326310723	SHAFT	Wheel	2
		(Prod Date) after 01-JAN-1983;	(Prod Date) after 01-JAN-1983;	1
31	N602550S36	BOLT,M8 x 1.25 x 25mm	Screw, HH, W/Washer, CL 8.8, M8 x 1.25 x 25	20
		(Prod Date) after 01-JAN-1983;	(Prod Date) after 01-JAN-1983;	1
32	89706690	NUT,M8 x 1.25, CI 8	NUT,M8 x 1.25, CI 8	4
		(Prod Date) after 01-JAN-1983;	(Prod Date) after 01-JAN-1983;	1
33	87016617	LOCK WASHER,M8	Washer, Spring	4

Diag #	Part #	Name	Description	Qty
		(Prod Date) after 01-JAN-1983;	(Prod Date) after 01-JAN-1983;	1
34	SBA011511235	BOLT,M12 x 35	BOLT,M12 x 35	8
		(Prod Date) after 01-JAN-1983;	(Prod Date) after 01-JAN-1983;	1
35	SBA330030170	KIT	Kingpin Assy., Kit, L.H. Includes: Ref. 8 thru 10	1
		(Prod Date) 01-JAN-1983-31-AUG-1983;	(Prod Date) 01-JAN-1983-31-AUG-1983;	1
		1110 - Used on & ASN UB02393, 1210 (U.S.) - Used on & ASN UC09506, NH-E - Used on & ASN UB01350	1110 - Used on & ASN UB02393, 1210 (U.S.) - Used on & ASN UC09506, NH-E - Used on & ASN UB01350	1
35	SBA334521472	ARM	L.H., L/Power Steering	1
		(Prod Date) after 01-SEP-1983;	(Prod Date) after 01-SEP-1983;	1
35	SBA334521482	ARM	L.H., W/Power Steering	1
		(Prod Date) after 01-MAY-1985;	(Prod Date) after 01-MAY-1985;	1
36	SBA199346011	WASHER	WASHER	2
		(Prod Date) after 01-JAN-1983;	(Prod Date) after 01-JAN-1983;	1
37	SBA010331225	BOLT	M12 x 25	2
		(Prod Date) 01-JAN-1983-31-AUG-1983;	(Prod Date) 01-JAN-1983-31-AUG-1983;	1
38	SBA330030180	KIT	Kingpin Assy. Kit, R.H. Includes: Ref. 8 thru 10	1
		(Prod Date) 01-JAN-1983-31-AUG-1983;	(Prod Date) 01-JAN-1983-31-AUG-1983;	1
		Dealer Can No Longer Get Arm W/Hole. Must Order Kit.	Dealer Can No Longer Get Arm W/Hole. Must Order Kit.	1
38	SBA334521492	ARM	R.H.	1
		(Prod Date) after 01-SEP-1983;	(Prod Date) after 01-SEP-1983;	1
39	SBA011511025	CAPTIVE WASHER SCREW,Hex, M10 x 25, G5	SCREW, CAPTIVE WASHER, Hex, M10 x 25, G5	8
		(Prod Date) after 01-JAN-1983;	(Prod Date) after 01-JAN-1983;	1
40	SBA334700860	LINK	Includes: Ref. 16	1
		(Prod Date) after 01-JAN-1983;	(Prod Date) after 01-JAN-1983;	1
41	SBA334800710	TRACK ROD END ASSY	End Assy., R.H.	1
		(Prod Date) after 01-JAN-1983;	(Prod Date) after 01-JAN-1983;	1
42	SBA334800690	BALL JOINT	End Assy., L.H. Includes: Ref. 43 thru 46	1
		(Prod Date) after 01-JAN-1983;	(Prod Date) after 01-JAN-1983;	1

Diag #	Part #	Name	Description	Qty
43	SBA334810080	SLOTTED NUT,M12 x 1.25	NUT, SLOTTED, M12 x 1.25	2
		(Prod Date) after 01-JAN-1983;	(Prod Date) after 01-JAN-1983;	1
44	PL	PROCURE LOCALLY	Pin	2
		(Prod Date) after 01-JAN-1983;	(Prod Date) after 01-JAN-1983;	1
45	SBA334810100	NUT,M17 x 1.5, RH Thd	NUT,M17 x 1.5, RH Thd	1
		(Prod Date) after 01-JAN-1983;	(Prod Date) after 01-JAN-1983;	1
46	SBA334810110	NUT,M17 x 1.5, LH Thd	NUT,M17 x 1.5, LH Thd	1
		(Prod Date) after 01-JAN-1983;	(Prod Date) after 01-JAN-1983;	1
47	SBA334711090	CONNECTING LINK	Link, L/Power Steering	1
		(Prod Date) after 01-JAN-1983;	(Prod Date) after 01-JAN-1983;	1
47	SBA334700260	LINK	W/Power Steering	1
		(Prod Date) after 01-MAY-1985;	(Prod Date) after 01-MAY-1985;	1
48	SBA334801360	TRACK ROD END ASSY	End Assy., R.H., L/Power Steering Includes: Ref. 50, 50A, 50B	1
		(Prod Date) after 01-JAN-1983;	(Prod Date) after 01-JAN-1983;	1
48	SBA334800250	TRACK ROD END ASSY	End Assy., R.H., W/Power Steering Includes: Ref. 50, 50A	1
		(Prod Date) after 01-MAY-1985;	(Prod Date) after 01-MAY-1985;	1
49	SBA334801260	TRACK ROD END ASSY	End Assy., L.H., L/Power Steering Includes: Ref. 50, 50A, 50B	1
		(Prod Date) after 01-JAN-1983;	(Prod Date) after 01-JAN-1983;	1
49	SBA334800240	TRACK ROD END ASSY	End Assy., L.H., W/Power Steering Includes: Ref. 50, 50A	1
		(Prod Date) after 01-MAY-1985;	(Prod Date) after 01-MAY-1985;	1
50	SBA334810130	NUT	W/Power Steering, M14 x 1.5	2
		(Prod Date) after 01-MAY-1985;	(Prod Date) after 01-MAY-1985;	1
		Not Illustrated	Not Illustrated	1
50A	SBA334810070	COVER	Dust, L/Power Steering	2
		(Prod Date) after 01-JAN-1983;	(Prod Date) after 01-JAN-1983;	1
		Not Illustrated	Not Illustrated	1
50A	SBA334810140	COVER	Dust, W/Power Steering	2
		(Prod Date) after 01-MAY-1985;	(Prod Date) after 01-MAY-1985;	1
		Not Illustrated	Not Illustrated	1

Diag #	Part #	Name	Description	Qty
50B	SBA030103225	COTTER PIN,M3 x 25 L	PIN, SPLIT (COTTER), , L/Power Steering M3 x 25 L	2
		(Prod Date) after 01-JAN-1983;	(Prod Date) after 01-JAN-1983;	1
		Not Illustrated	Not Illustrated	1
50C	SBA334810202	SPRING	L/Power Steering	2
		(Prod Date) after 01-JAN-1983;	(Prod Date) after 01-JAN-1983;	1
		Not Illustrated	Not Illustrated	1
50	SBA334810090	NUT	L/Power Steering, M12 x 1.25-10	2
		(Prod Date) after 01-JAN-1983;	(Prod Date) after 01-JAN-1983;	1
51	PL	PROCURE LOCALLY	Pin, Split	2
		(Prod Date) after 01-JAN-1983;	(Prod Date) after 01-JAN-1983;	1
52	SBA020800014	NUT,M14 x 1.5	RH, L/Power Steering M14 x 1.5	1
		(Prod Date) after 01-JAN-1983;	(Prod Date) after 01-JAN-1983;	1
52	320771	NUT,Thin, M20 x 1.5, CI 04	Jam, CL 8, M20 x 1.5, RH, W/Power Steering	1
		(Prod Date) after 01-MAY-1985;	(Prod Date) after 01-MAY-1985;	1
53	SBA020109029	NUT	L.H., L/Power Steering	1
		(Prod Date) after 01-JAN-1983;	(Prod Date) after 01-JAN-1983;	1
53	SBA020109042	NUT	L.H., W/Power Steering L.H. Threads	1
		(Prod Date) after 01-MAY-1985;	(Prod Date) after 01-MAY-1985;	1
57	86517808	SCREW,M12 x 25mm	Bolt, M10 x 35	2
		(Prod Date) after 01-JAN-1983;	(Prod Date) after 01-JAN-1983;	1
58	100016	NUT,M10 x 1.5, CI 8	NUT,M10 x 1.5, CI 8	2
		(Prod Date) after 01-JAN-1983;	(Prod Date) after 01-JAN-1983;	1
59	412211	BOLT,Hex, M12 x 1.25 x 25mm, CI 8.8	BOLT,Hex, M12 x 1.25 x 25mm, CI 8.8	2
		(Prod Date) after 01-JAN-1983;	(Prod Date) after 01-JAN-1983;	1
60	SBA025100012	WASHER,12.4mm ID x 19mm OD x 2mm Thk	Seal M12	2
		(Prod Date) after 01-JAN-1983;	(Prod Date) after 01-JAN-1983;	1
61	SBA064600016	PLUG	PLUG	2
		(Prod Date) after 01-JAN-1983;	(Prod Date) after 01-JAN-1983;	1
62	SBA025100016	WASHER,16.4mm ID x 27mm OD x 2mm Thk	Seal, Washer	2

Diag #	Part #	Name	Description	Qty
		(Prod Date) after 01-JAN-1983;	(Prod Date) after 01-JAN-1983;	1
63	SBA398400260	DIPSTICK	Rubber	1
		(Prod Date) 01-JAN-1983-31-AUG-1983;	(Prod Date) 01-JAN-1983-31-AUG-1983;	1
63	SBA398400150	DIPSTICK	Metal	1
		(Prod Date) after 01-SEP-1983;	(Prod Date) after 01-SEP-1983;	1
64	BER43139	BOLT	HH, CL 8.8, M10 x 1.5 x 25	2
		(Prod Date) after 01-JAN-1983;	(Prod Date) after 01-JAN-1983;	1
65	100016	NUT,M10 x 1.5, CI 8	NUT,M10 x 1.5, CI 8	2
		(Prod Date) after 01-JAN-1983;	(Prod Date) after 01-JAN-1983;	1
66	SBA060610000	LUBE NIPPLE,M6 x .075	NIPPLE, LUBE, M6 x .075	2
		(Prod Date) after 01-JAN-1983;	(Prod Date) after 01-JAN-1983;	1
67	SBA398990050	GASKET	GASKET	1
		(Prod Date) after 01-SEP-1983;	(Prod Date) after 01-SEP-1983;	1
68	SBA334650350	BRACKET	W/Power Steering	1
		(Prod Date) after 01-MAY-1985;	(Prod Date) after 01-MAY-1985;	1
69	SBA334650400	BRACKET	W/Power Steering	1
		(Prod Date) after 01-MAY-1985;	(Prod Date) after 01-MAY-1985;	1
70	SBA344950340	CYLINDER	W/Power Steering	1
		(Prod Date) after 01-MAY-1985;	(Prod Date) after 01-MAY-1985;	1
71	SBA011511040	BOLT,M10 x 40	W/Power Steering, M10 x 40 M10 x 40	2
		(Prod Date) after 01-MAY-1985;	(Prod Date) after 01-MAY-1985;	1
72	SBA011510830	BOLT	W/Power Steering, M8 x 30	2
		(Prod Date) after 01-MAY-1985;	(Prod Date) after 01-MAY-1985;	1
73	SBA031311250	PIN	W/Power Steering	1
		(Prod Date) after 01-MAY-1985;	(Prod Date) after 01-MAY-1985;	1
74	378245	WASHER,13mm ID x 28.5mm OD x 2.7mm Thk	W/Power Steering M13 x 28 x 2 Thk	1
		(Prod Date) after 01-MAY-1985;	(Prod Date) after 01-MAY-1985;	1
75	PL	PROCURE LOCALLY	Pin, Cotter, W/Power Steering	2
		(Prod Date) after 01-MAY-1985;	(Prod Date) after 01-MAY-1985;	1