

4) Link adjustment

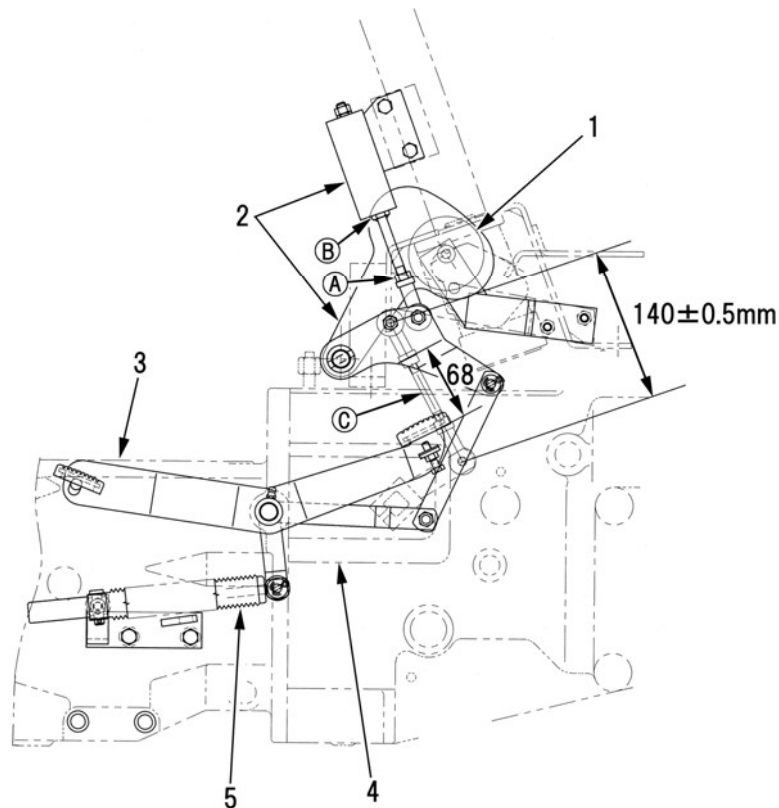
(1) Neutral position adjustment

1. Jack up the front and rear wheels off the ground and jack stands under the axles.
Make sure all four wheels are clear of the ground.
2. Apply the master brake pedal and start the engine, release the brake pedal.
3. Set the throttle at low speed and place the range shift lever in the low range position.
4. If the wheels rotate at this time, loosen the lock nut (A) and rotate the rod (B) until the wheels stop and tighten the lock nut, Figure 398Y.

NOTE :

Turning the rod (B) clockwise will cause wheels to rotate in reverse and turning counter clockwise the wheels will rotate in the forward direction.

5. Stop the engine and remove the jack stands.
Lower the wheels to the ground.
6. While seated in the operators seat, start the engine with the range lever in low range, and increase the engine speed to full throttle. The tractor should not move in either direction.



398Y

- | | |
|----------------------------|-------------|
| 1. Cruise control magnet | 4. HST unit |
| 2. Neutral control linkage | 5. Damper |
| 3. Foot pedal | |

NOTE :

If necessary, inspect the rod (C) length to $140 \pm 0.5\text{mm}$, and take care the bottom end's thread is left handed screw.