



**John Deere - Parts Catalog**  
Printer Friendly Page

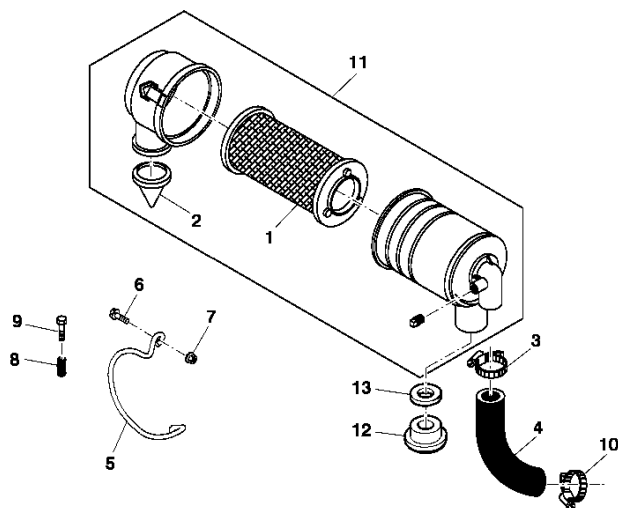
[Close Window](#)

Catalog: **2504** | Grid: **C10** | Section: **30** | Page: **7**

Catalog Name: **1200A Bunker and Field Vehicle**

Page Name: **AIR CLEANER**

Direction of Travel: 



PU03380

KEY	PART NO.	PART NAME	QTY	SERIAL NO.	REMARKS
1	M113621	FILTER	1		
2	AM108172	DRAIN VALVE	1		
3	TY22470	CLAMP	1		(SUB FOR AR21840)
4	MT2133	HOSE	1		
5	M113622	BRACKET	1		(SUB M141832, 19M7867 AND 14M7396)
	M141832	BRACKET	1		
6	14M7396	LOCK NUT	2		M8
7	19M7867	SCREW	2		M8 X 25 (HS, HEAD MARKED 10.9)
8	R59468	SPRING	1		(USE WITH M113622)
9	19M7798	SCREW	1		M8 X 40 (HS, HEAD MARKED 10.9) (USE WITH M113622)
KEY	PART NO.	PART NAME	QTY	SERIAL NO.	REMARKS
10	TY22467	CLAMP	1		(SUB FOR AR21839)
11	AMT1067	AIR CLEANER	1		
12	M125264	CAP	1	926466-	
13	TCU26997	WASHER	1	165001-	CA
	TCU26997	WASHER	1	180001-	