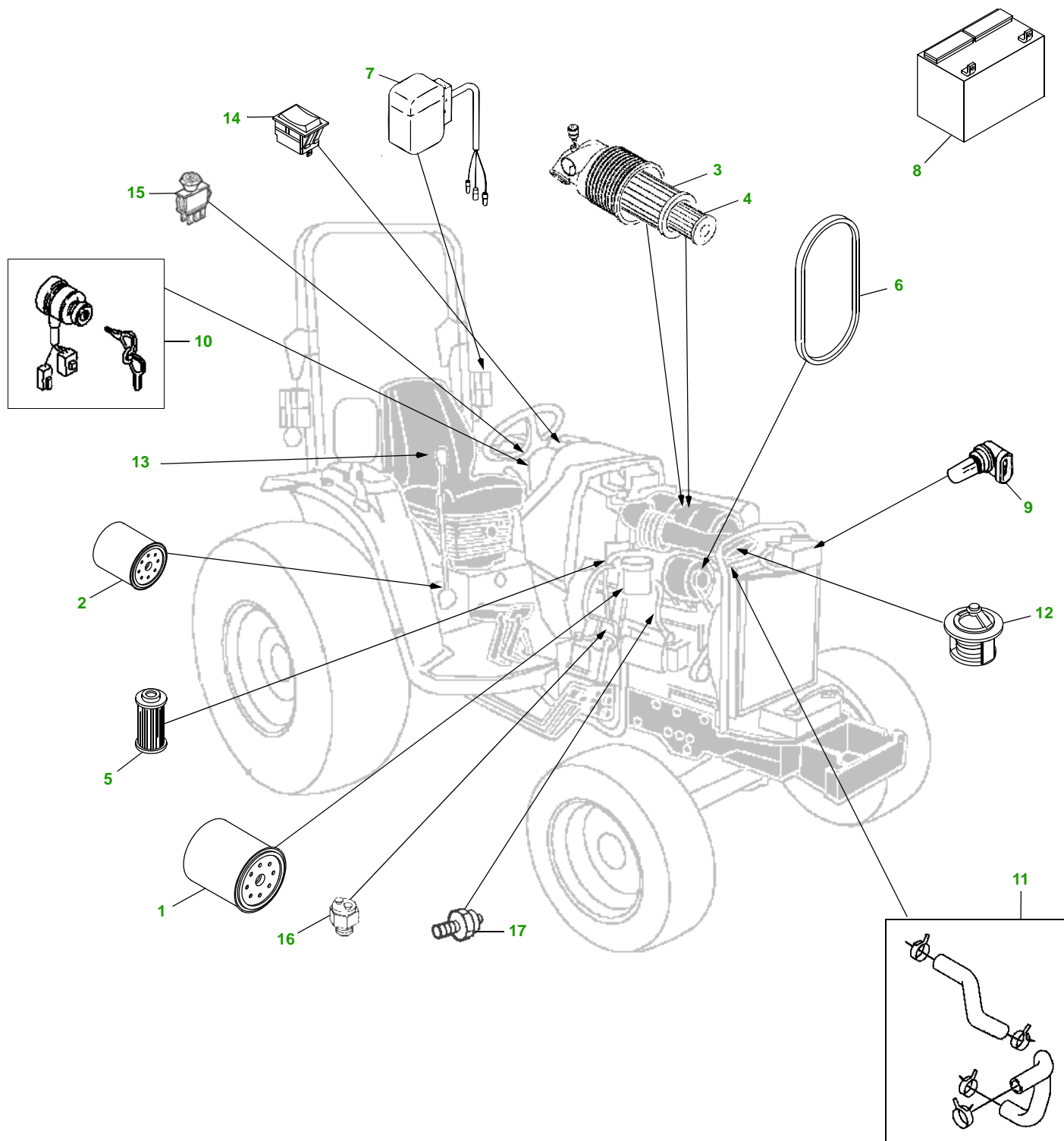


2305



key	part no.	description	key	part no.	description
1	M806418	ENGINE OIL FILTER	11	M807445	RADIATOR HOSE (UPPER)
2	LVA12812	HYDRAULIC FILTER		LVU800951	RADIATOR HOSE (LOWER)
3	RG60690	FILTER ELEMENT - OUTER		M809541	HOSE CLAMP
4	RG25644	FILTER ELEMENT - INNER	12	CH15536	THERMOSTAT
5	M801101	FUEL FILTER ELEMENT		M805702	THERMOSTAT GASKET
6	M809529	FAN BELT	13	LVA12751	SEAT
7	AM879645	LAMP - WARNING (LH)	14	AM117254	TURN SIGNAL SW
	AM879646	LAMP - WARNING (RH)	15	AM118802	PTO SW
8	TY25876	BATTERY	16	AM37643	NEUTRAL START SW
9	57M7166	HEADLIGHT BULB	17	M809526	OIL PRESSURE SW
10	AM879480	KEY			
	AM879479	SWITCH			

PARTS IN BOLD PRINT ARE RECOMMENDED SPARES TO HAVE ON HAND

Parts Needed in First 250 hours of Operation

Qty	Part No	Item	Capacity	Change Interval in Hours
2	M806418	Oil Filter		50/200
8	TY22064	1 Qt. JD Torq Gard 5W30 Engine Oil	3.4 qt	50/200
1	LVA12812	Hydraulic Filter		50
1	TY6342	5 Gal Low Vis Hy Gard	3.4 gal	50
3	TY6341	JD Multi Purpose SD Polyurea Grease		As Needed

“As Needed” Parts

Qty	Part No	Item
1	M801101	Fuel Filter Element
1	M113621	Air Filter - Outer
1	M123378	Air Filter - Inner
1	M809529	Fan Belt
1	AM879480	Key
1	LVU15970	Fuel Filler Cap
1	TY26183	Grease Gun