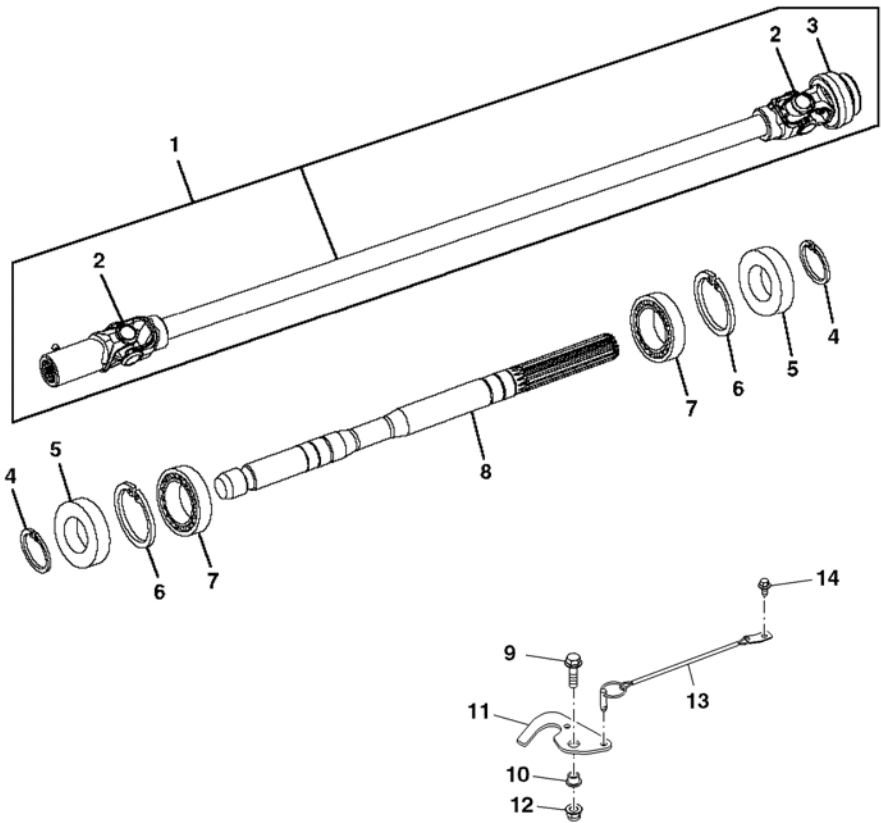


Catalog: 9151 | Grid: 0 | Section: 15 | Page: 8

Catalog Name: Attachments for X465,X475,X485,X495,X565,X575,X585,X595,X700,X720,X724,X728,X740,X744,X748 Tractors

Page Name: Front PTO Kit (4WD)

Direction of Travel: 



PU08244

key	PART NO.	PART NAME	QTY	SERIAL NO.	REMARKS
1	AM132900	Universal Driveshaft	1		(SUB FOR AM128888)
2	AM131981	Cross And Bearing Assembly	2		
3	AM133972	Yoke	1		LOCKING COLLAR REPAIR, (SUB FOR AM131996)
4	40M7195	Snap Ring	2		
5	M145671	Seal	2		
6	40M1863	Snap Ring	2		
7	CH14828	Ball Bearing	2		
8	M145608	Shaft	1		
9	19M7868	Screw	1		M8 X 30
10	M163780	Bushing	1		
key	PART NO.	PART NAME	QTY	SERIAL NO.	REMARKS

11	M164636	Plate	1		
12	14M7396	Lock Nut	1		M8
13	M165478	Pin	1		
14	37M7458	Screw	1		M6 X 12
..	BM20382	Kit	1	-030000	NLA; ORDER BM22560; FRONT PTO
..	BM22560	Power-Takeoff Kit	1		NLA; ORDER BM24362
..	BM24362	Universal Driveshaft	1		