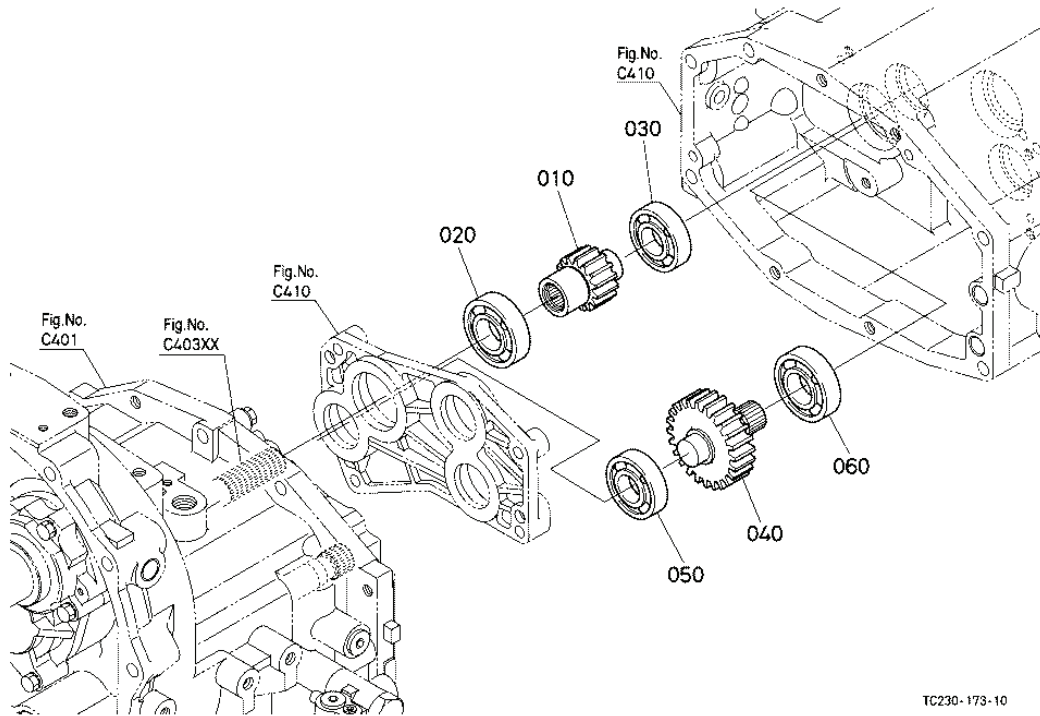


PTO COUNTERSHAFT

Figure Num 01D130

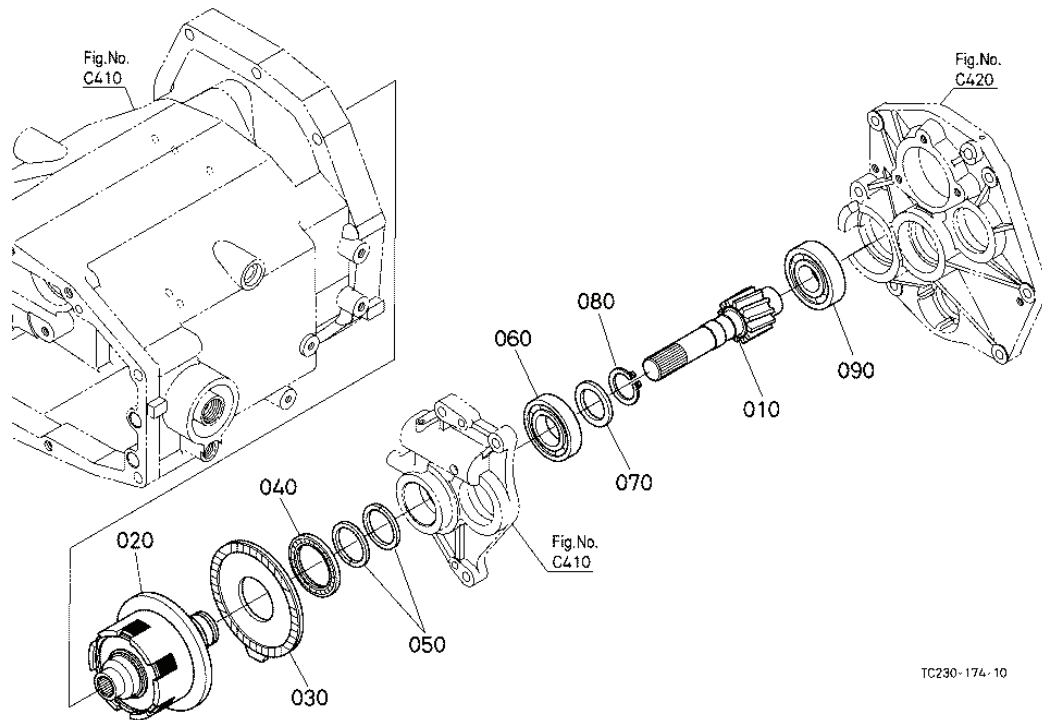


PTO COUNTERSHAFT

Ref	Part Number	Part Name	Qty	IC	S/N	Lbs	Remarks
010	TC230-53240	GEAR-SHAFT PTO	1			1.056	15T
020	36920-40090	BEARING BALL	1			0.22	
030	37410-57190	BEARING BALL	1			0.308	
040	TC230-53250	GEAR-SHAFT	1			2.266	25T
050	37410-57190	BEARING BALL	1			0.308	
060	08101-06206	BEARING BALL	1			0.431	

PTO CLUTCH

Figure Num 01D132



TC230-174-10

PTO CLUTCH

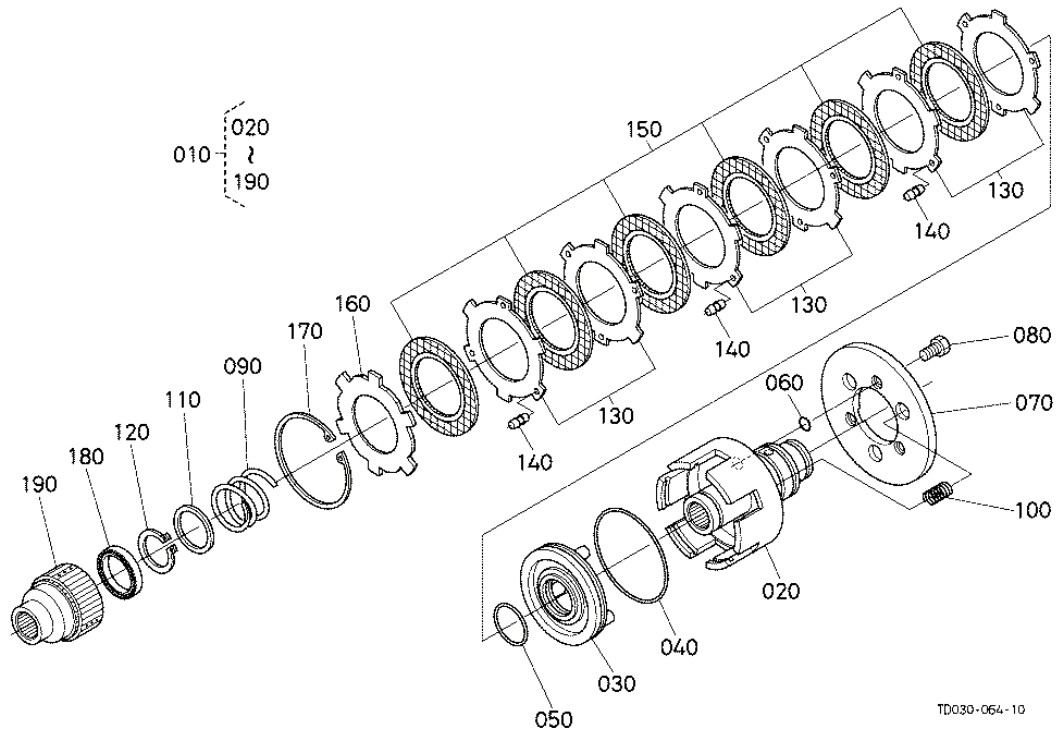
Ref	Part Number	Part Name	Qty	IC	S/N	Lbs	Remarks
010	TC230-53500	GEAR-SHAFT I-PTO	1			2.2	12T
020	TD060-69002	ASSY CLUTCH I-PTO	1			0	
030	TA040-69150	DISK BRAKE	1			0.902	
040	TA040-69160	BEARING NEEDLE	1			0.063	
050	T1853-61510	SEAL RING	2			0.002	
060	08101-06207	BEARING BALL	1			0.616	
070	69331-24330	COLLAR DISTANCE	1			0.026	

PTO CLUTCH

Ref	Part Number	Part Name	Qty	IC	S/N	Lbs	Remarks
080	36740-41150	CIR CLIP EXTERNAL	1			0.022	
090	36540-41130	BEARING BALL	1			0.748	

PTO CLUTCH [COMPONENT PARTS]

Figure Num 01D133



PTO CLUTCH [COMPONENT PARTS]

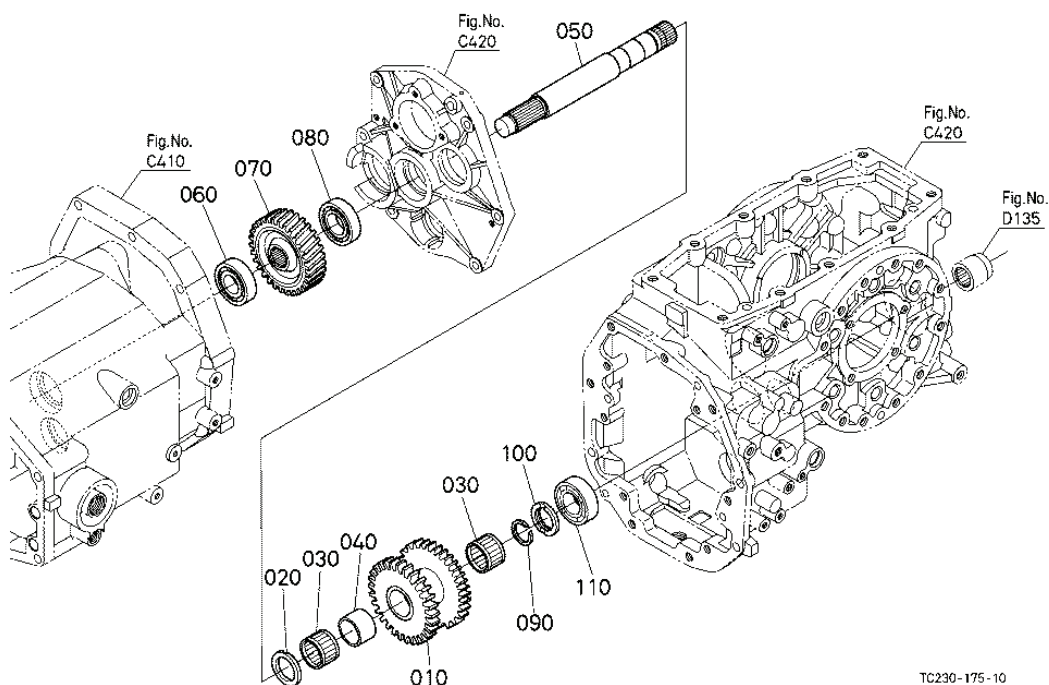
Ref	Part Number	Part Name	Qty	IC	S/N	Lbs	Remarks
010	TD060-69002	ASSY CLUTCH I-PTO	1			0	
020	TA040-69012	CASE PTO CLUTCH	1			3.421	
030	TA040-69020	PISTON	1			0.869	
040	31501-72330	D RING OUTER	1			0.011	
050	31501-72470	D RING INNER	1			0.002	
060	04816-00100	O RING	3			0.002	
070	3A211-27220	PLATE BRAKE	1			1.408	

PTO CLUTCH [COMPONENT PARTS]

Ref	Part Number	Part Name	Qty	IC	S/N	Lbs	Remarks
080	TA040-69040	BOLT	3			0.008	
090	TA040-69050	SPRING RETURN	1			0.165	
100	TA040-69060	SPRING RETURN	3			0.017	
110	PF801-31260	WASHER	1			0.033	
120	04612-00350	CIR CLIP EXTERNAL	1			0.022	
130	TA040-69080	PLATE	6			0.079	
140	TA040-69090	RUBBER	9			0.002	
150	34070-15250	DISK CLUTCH	6			0.088	
160	TA040-69103	PLATE BACK	1			0.264	
170	04611-00920	CIR CLIP INTERNAL	1			0.088	
180	08101-06807	BEARING BALL	1			0.066	
190	TA040-69115	HUB CLUTCH	1			0.803	

PTO DRIVE SHAFT

Figure Num 01D134



TC230-175-10

PTO DRIVE SHAFT

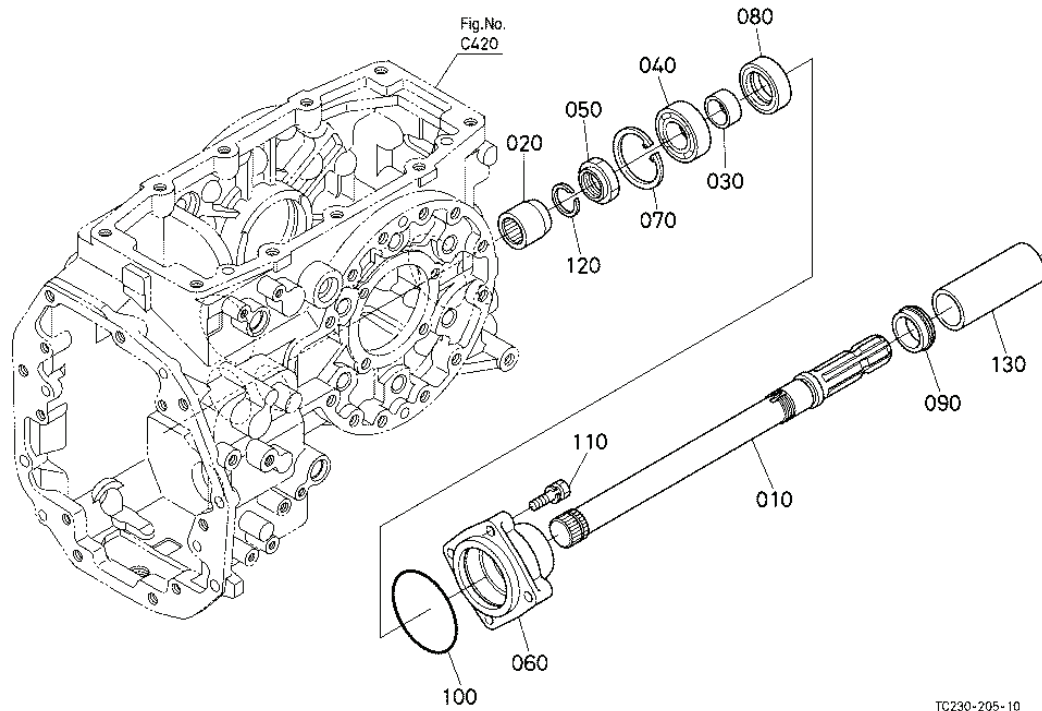
Ref	Part Number	Part Name	Qty	IC	S/N	Lbs	Remarks
010	TC230-15120	GEAR	1			3.872	29-31T
020	38430-25233	COLLAR THRUST	1			0.044	
030	38430-25670	BEARING NEEDLE	2			0.066	
040	TC230-15130	COLLAR	1			0.092	
050	TC230-53680	SHAFT PTO DRIVE	1			4.4	
060	35890-41290	BEARING BALL	1			0.512	
070	TD060-23610	GEAR PTO	1			4.07	30T

PTO DRIVE SHAFT

Ref	Part Number	Part Name	Qty	IC	S/N	Lbs	Remarks
080	76550-34140	BEARING BALL	1			0.462	
090	37410-15280	CIR-CLIP	1			0.011	
100	34550-23360	COLLAR THRUST	1			0.055	
110	37410-57330	BEARING BALL	1			0.44	

PTO SHAFT

Figure Num 01D135

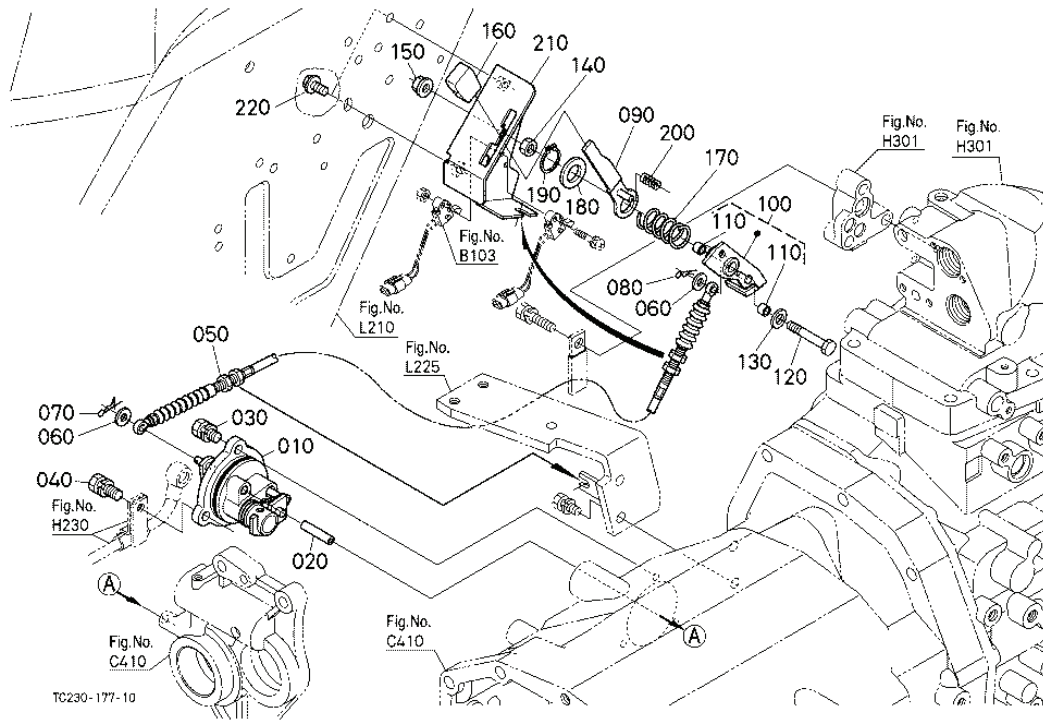


PTO SHAFT

Ref	Part Number	Part Name	Qty	IC	S/N	Lbs	Remarks
010	TA040-23702	SHAFT PTO	1			4.62	
020	TD060-23660	COUPLING PTO	1			0.363	
030	35340-25350	COLLAR OIL SEAL	1			0.066	
040	TD060-23730	BEARING BALL	1			0.495	
050	35340-25320	NUT	1			0.11	
060	TD050-23720	CASE BEARING	1			2.42	
070	04611-00650	CIR CLIP INTERNAL	1			0.024	

PTO CLUTCH CONTROL LEVER

Figure Num 01E126



PTO CLUTCH CONTROL LEVER

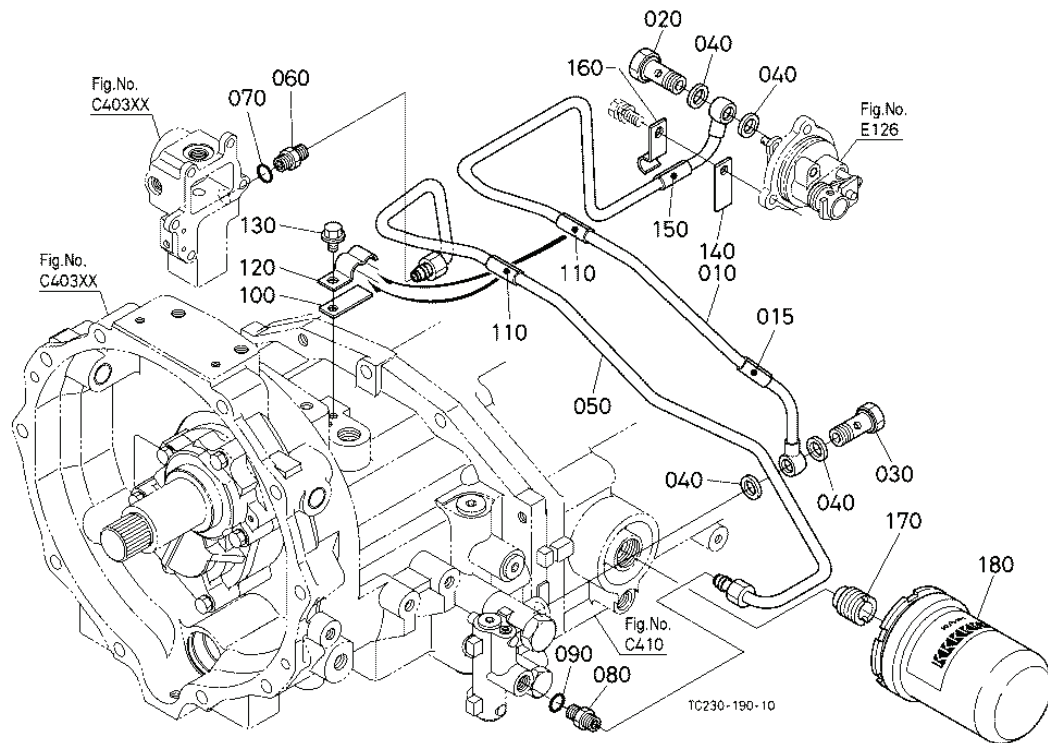
Ref	Part Number	Part Name	Qty	IC	S/N	Lbs	Remarks
010	TD060-51450	ASSY VALVE I-PTO	1			2.057	
020	36530-27273	PIPE HYDRAULIC	1			0.011	
030	01123-50820	BOLT	2			0.024	
040	01123-50825	BOLT	1			0.028	
050	TC230-24654	CABLE PTO	1			0.352	
060	04012-50060	WASHER PLAIN	2			0.002	
070	52300-34110	PIN SNAP	1			0.004	

PTO CLUTCH CONTROL LEVER

Ref	Part Number	Part Name	Qty	IC	S/N	Lbs	Remarks
080	05525-60600	PIN SNAP	1			0.002	
090	3A012-27810	LEVER PTO CLUTCH	1			0.107	
100	TC250-69720	ASSY CAM PTO LEVER	1			0	
110	08511-00810	BUSH	2			0.006	
120	TC220-59740	PIN PTO LEVER	1			0	
130	04013-60080	WASHER PLAIN	1			0.004	
140	02112-50080	NUT	1			0.006	
150	02763-50080	NUT FLANGE	1			0.013	
160	36919-27820	GRIP PTO LEVER	1			0.033	
170	3A012-27850	SPRING	1			0.011	
180	04011-50180	WASHER PLAIN	1			0.026	
190	04612-00180	CIR CLIP EXTERNAL	1			0.002	
200	3A111-27830	SPRING PTO LEVER	1			0.002	
210	TC050-47612	GUIDE PTO LEVER	1			0.66	
220	01754-50816	BOLT FLANGE	2			0.024	

PTO HYDRAULIC OIL LINE

Figure Num 01H230



PTO HYDRAULIC OIL LINE

Ref	Part Number	Part Name	Qty	IC	S/N	Lbs	Remarks
010	TC230-56114	COMP.PIPE I-PTO	1			0.528	
015	TC230-45270	PIPE RUBBER	1			0	
020	TA040-69402	ASSY BOLT	1			0.099	
030	34076-66590	BOLT JOINT	1			0.11	
040	04714-00200	GASKET	4			0.004	
050	TC230-58274	COMP.PIPE	1			0.594	
060	06012-51023	JOINT PIPE	1			0.088	

PTO HYDRAULIC OIL LINE

Ref	Part Number	Part Name	Qty	IC	S/N	Lbs	Remarks
070	04817-00110	O RING	1			0.002	
080	06012-51023	JOINT PIPE	1			0.088	
090	04817-00110	O RING	1			0.002	
100	TC230-33570	PLATE CLAMP	1			0.044	
110	TC230-45270	PIPE RUBBER	2			0	
120	TC230-33692	CLAMP PIPE	1			0	
130	01754-50812	BOLT FLANGE	1			0.022	
140	TC230-33570	PLATE CLAMP	1			0.044	
150	TC230-45270	PIPE RUBBER	1			0	
160	TC230-33700	CLAMP PIPE	1			0	
170	58700-11530	ADAPTER	1			0.138	
180	HHTA0-59900	FILTER OIL	1			2.068	