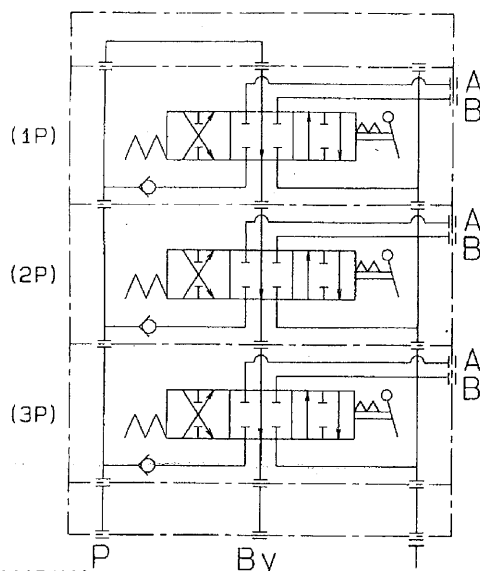


### DOUBLE ACTING REMOTE HYDRAULIC CONTROL VALVE ASSEMBLY for KUBOTA TRACTOR L3130·L3430·L3830·L4330·L4630·L5030

These remote valve assemblies are used to take hydraulic power out of the tractor hydraulic system and to send it by way of high-pressure hoses to an implement to be actuated.

## 1. HYDRAULIC CIRCUIT DIAGRAM

### ■ Standard Type for All Models



1AGAMAAAP408A

## 2. STANDARD

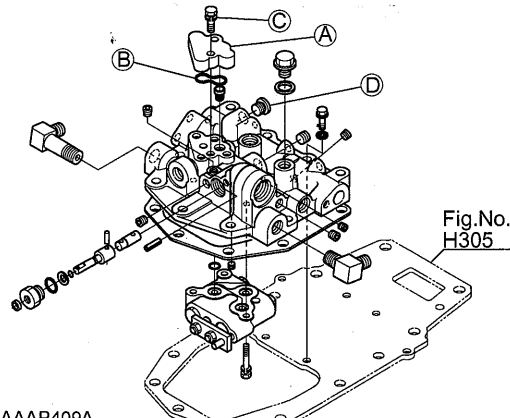
- (1) Hydraulic coupler joint : NPSF 1/2"
- (2) Max. pressure (tractor's relief valve) :  
18.1 MPa (185 kgf/cm<sup>2</sup>, 2632 psi)
- (3) Max. Flow rate :
  - 31.5 L/min. (33.3 U.S.qts.) for L3130, L3430, L3830
  - 35.6 L/min. (37.7 U.S.qts.) for L4330
  - 37.0 L/min. (39.1 U.S.qts.) for L4630, L5030

## 3. ASSEMBLY PROCEDURE

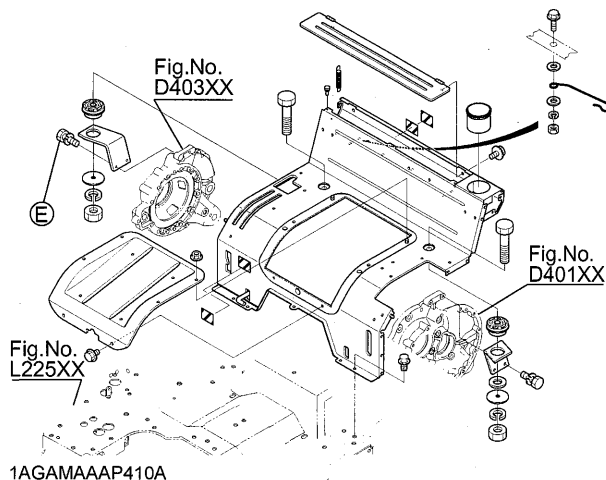
Check service package kit with attached parts list (page 4 to 6) to be certain all parts are included in the service package.

### A. PRIOR TO MOUNTING REMOTE VALVE UNIT, REMOVE THE FOLLOWING PARTS.

- |                     |     |       |
|---------------------|-----|-------|
| (1) Cyl. Side Cover | (A) | 1pc.  |
| (2) O-Ring          | (B) | 1pc.  |
| (3) Bolts           | (C) | 2pcs. |
| (4) Plug            | (D) | 1pc.  |
| (5) Bolts           | (E) | 2pcs. |



1AGAMAAAP409A



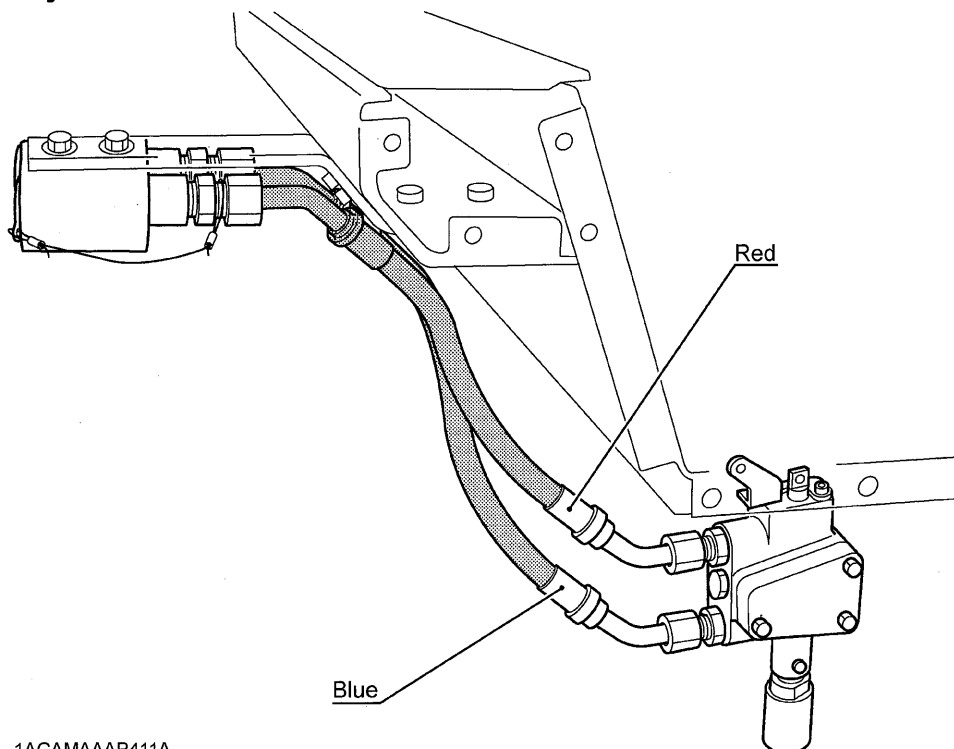
1AGAMAAAP410A

**B. ASSEMBLY REMOTE VALVE UNIT ACCORDING TO THE FOLLOWING PROCEDURE.  
(REFER TO THE ATTACHED PARTS LIST.)**

- (1) Place the new label ((1) and (2)) on the lever guide.
- (2) Apply grease to the O-rings ((3),(4),(5),(6),(7)) and place in the O-ring grooves on remote valve (8), pipe assembly (9) and return pipe (10).  
Assemble the parts (9), (8) and (12) by tightening the bolts (11) to the torque of 22.5-24.5 N-m.  
\* To add another valve, take the following steps. Disconnect the hydraulic hoses; remove the valve assemblies ((9), (8), (12) and (9)) from the tractor; remove the bolts (11); place the added valve in between; tighten up the 2nd-gang and 3rd-gang bolts (11); finally take the above steps (3) to (10).
- (3) Attach return pipe (10) to remote valve assembly.
- (4) Attach remote valve assembly to hydraulic cylinder (a) with bolts (13). But do not tighten the bolts.
- (5) Attach valve stay (14) between floor seat support (b) and remote valve assembly using bolts ((15),(16)).
- (6) Tighten the bolts ((13),(15),(16)).  
Tightening torque : M10x30            35.5 to 41.2 ft-lbs. (4.9 to 5.7 kgf-m)  
   M8x20, M8x35    17.3 to 20.3 ft-lbs. (2.4 to 2.8 kgf-m)
- (7) After installing lever grips (18) and lever tubes (19), attach control levers ((20),(21),(22)) to remote valve assembly using joint pins (23), plain washers (24) and split pins (25).
- (8) Attach coupler stay 1 (26), and 2 (27) to rear of floor seat using bolts (28) and nuts (29).
- (9) Attach coupler (35) and holders (36) to coupler stay (26) using bolts ((30) or (31) or (32)), spring washers (33) and nuts (34).
- (10) Tighten the high pressure hoses securely to the remote valve assembly (12) and couplers (35) to avoid oil leakage.  
(Refer to the following drawings)  
Tightening torque : 36.2 to 43.4 ft-lbs. (5.0 to 6.0 kgf-m)

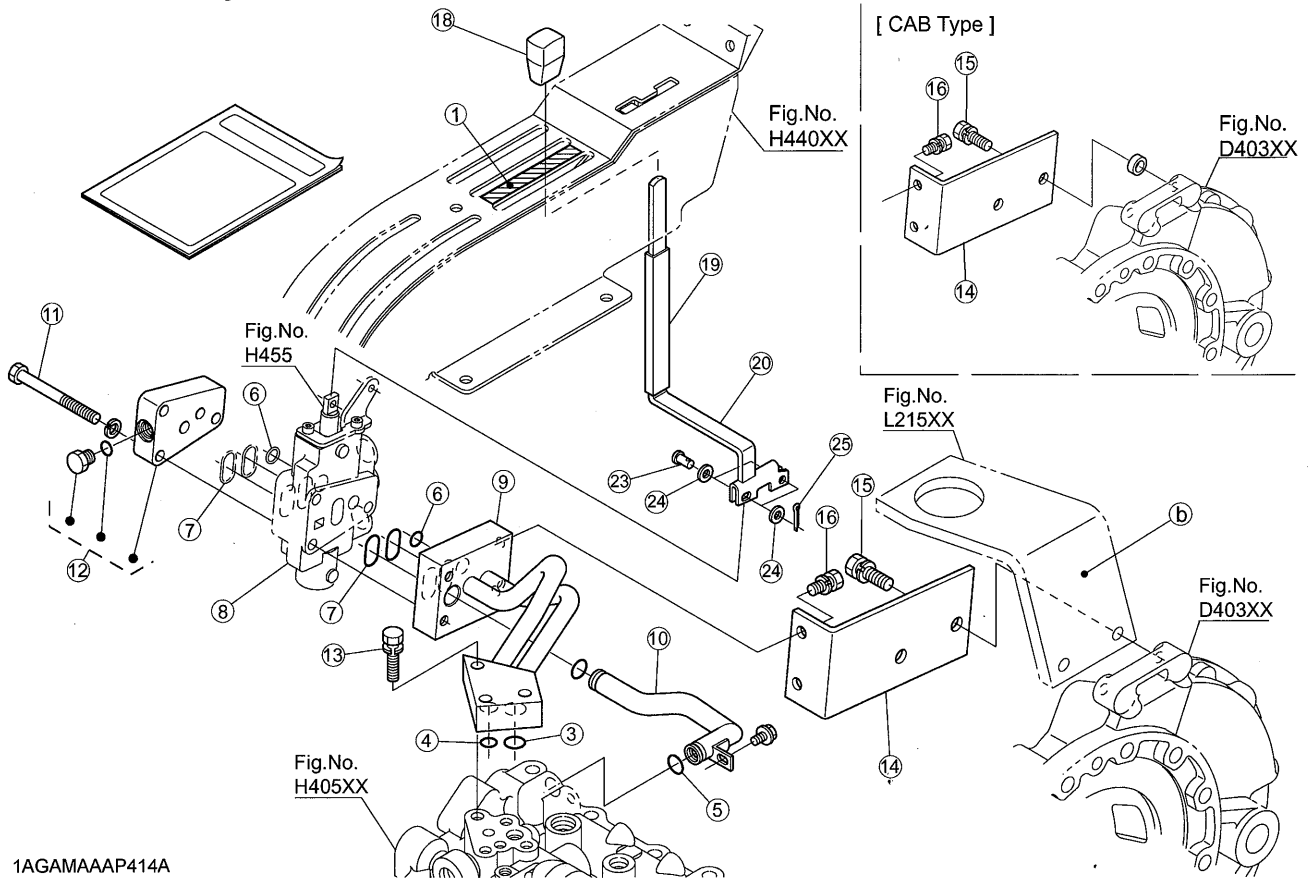
**NOTE:** Make sure the hydraulic hoses, cab mounting bracket and 3P link do not interfere with each other.

**■ 1st. Remote Hydraulic**

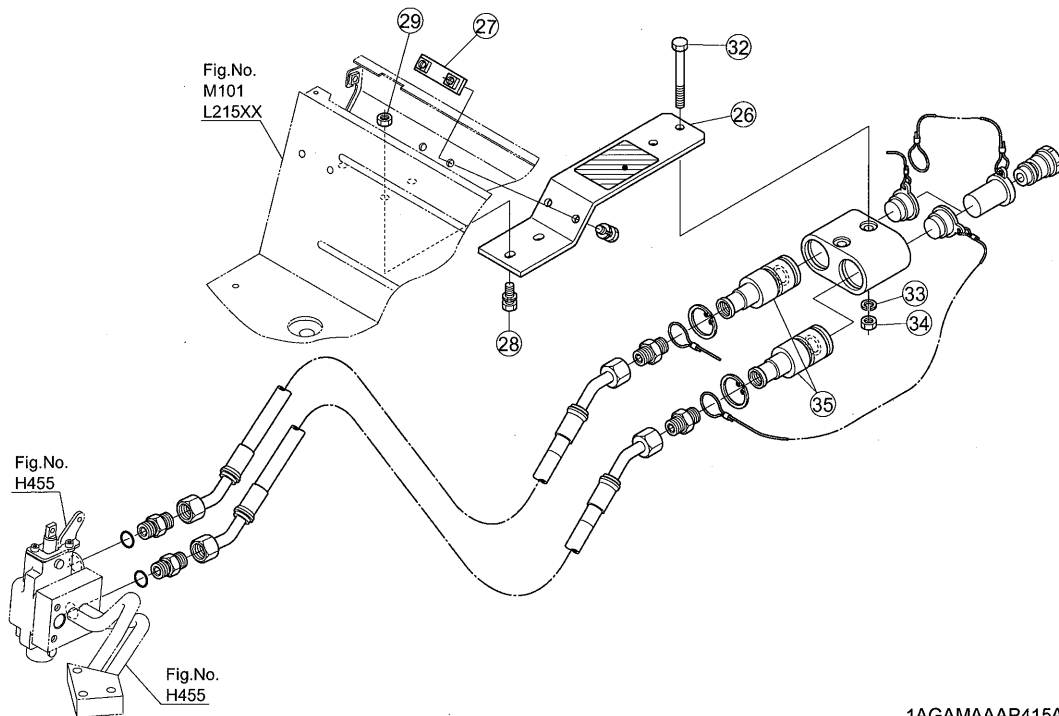


## 5. PARTS LIST

### ■ 1st. Remote Hydraulic



1AGAMAAAP414A



1AGAMAAAP415A